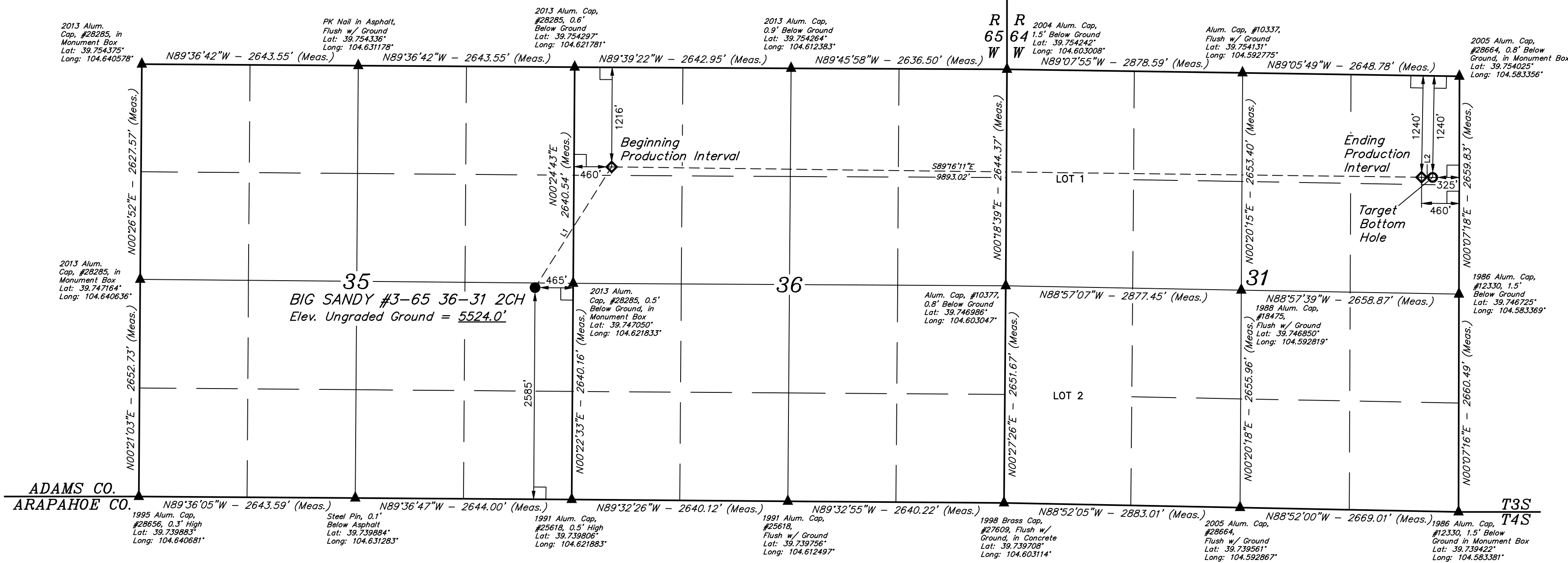
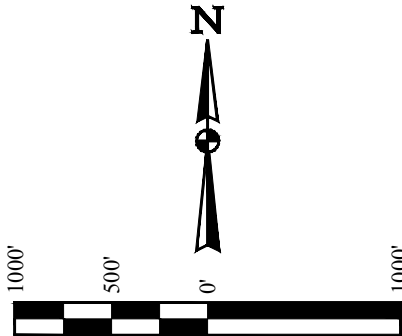


T3S, R65W, 6th P.M.

ConocoPhillips Company

BIG SANDY #3-65 36-31 2CH
NE 1/4 SE 1/4, SECTION 35, T3S, R65W, 6th P.M.
ADAMS COUNTY, COLORADO

BASIS OF BEARINGS
BASIS OF ELEVATION
BENCHMARK 374 LOCATED ON THE SECTION LINE BETWEEN
SECTIONS 12 & 13, T5S, R64W, 6th P.M., TAKEN FROM 1988
PUBLISHED DATUM BY THE UNITED STATES DEPARTMENT OF
THE INTERIOR, GEOLOGICAL SURVEY AS BEING 6054.61 FEET.



- LEGEND:
- 90° SYMBOL
 - SECTION CORNERS LOCATED. (NAD 83)
 - PROPOSED WELLHEAD.
 - PRODUCTION INTERVAL.
 - TARGET BOTTOM HOLE.

LINE TABLE		
LINE	DIRECTION	LENGTH
L1	N32°24'34"E	1745.67'
L2	S89°05'49"E	135.01'

NAD 83 (SURFACE LOCATION)	NAD 83 (BEG. PROD. INTERVAL)	NAD 83 (ENDING PROD. INTERVAL)	NAD 83 (TARGET BOTTOM HOLE)
LATITUDE = 39°44'48.86" (39.746906) LONGITUDE = 104°37'24.56" (104.623489)	LATITUDE = 39°45'03.44" (39.750956) LONGITUDE = 104°37'12.61" (104.620169)	LATITUDE = 39°45'02.30" (39.750639) LONGITUDE = 104°35'05.99" (104.584997)	LATITUDE = 39°45'02.28" (39.750633) LONGITUDE = 104°35'04.26" (104.584517)
NAD 27 (SURFACE LOCATION)	NAD 27 (BEG. PROD. INTERVAL)	NAD 27 (ENDING PROD. INTERVAL)	NAD 27 (TARGET BOTTOM HOLE)
LATITUDE = 39°44'48.91" (39.746919) LONGITUDE = 104°37'22.68" (104.622967)	LATITUDE = 39°45'03.49" (39.750969) LONGITUDE = 104°37'10.73" (104.619647)	LATITUDE = 39°45'02.35" (39.750653) LONGITUDE = 104°35'04.11" (104.584475)	LATITUDE = 39°45'02.33" (39.750647) LONGITUDE = 104°35'02.39" (104.583997)
STATE PLANE NAD 83 (CO. NORTH)	STATE PLANE NAD 83 (CO. NORTH)	STATE PLANE NAD 83 (CO. NORTH)	STATE PLANE NAD 83 (CO. NORTH)
N: 1151870.51 E: 3246465.05	N: 1153354.27 E: 3247383.79	N: 1153339.36 E: 3257273.95	N: 1153338.75 E: 3257408.92
STATE PLANE NAD 27 (CO. NORTH)	STATE PLANE NAD 27 (CO. NORTH)	STATE PLANE NAD 27 (CO. NORTH)	STATE PLANE NAD 27 (CO. NORTH)
N: 151874.01 E: 2246618.41	N: 153357.76 E: 2247537.11	N: 153342.99 E: 2257427.18	N: 153342.38 E: 2257562.16

CERTIFICATE OF SURVEY
THIS IS TO CERTIFY THAT THE ABOVE DESCRIBED SURVEY WAS MADE BY ME OR UNDER MY SUPERVISION AND THAT THE SAME ARE TRUE AND CORRECT TO THE BEST OF MY KNOWLEDGE AND BELIEF.

REGISTERED LAND SURVEYOR
REGISTRATION NO. 28285
STATE OF COLORADO
JULY 17, 2017

UINTEAH
CONSTRUCTION & LAND SURVEYING

UELS, LLC
Corporate Office * 85 South 200 East
Vernal, UT 84078 * (435) 789-1017

SURVEYED BY CHAD MEIERS, R.F.
DRAWN BY M.F.D.

07-05-17
08-30-16

SCALE
1" = 1000'

WELL LOCATION PLAT

PDOP = 1.4

REV: 3 07-06-17 J.J. (BPI, EPI & BHL CHANGE)