



Great Western Operating
Company, LLC
1801 Broadway, Suite 500
Denver, CO 80202

303.398.0302
866.742.1784 Fax
info@gwogco.com
www.gwogco.com

October 4, 2017

Colorado Oil and Gas Conservation Commission
1120 Lincoln Street, Suite 801
Denver, CO 80203

RE: Proposed Wellbore Spacing Unit
Raindance FD 20-319HNX
Niobrara New Drill
NENE Sec. 30, Township 6N, Range 67W
Weld County, Colorado

Dear Director Lepore,

Great Western Operating Company, LLC (Great Western) is planning to drill the above captioned well in accordance with the provisions of Colorado Oil and Gas Conservation Commission (COGCC) Rule 318A.e.

Great Western's proposed wellbore spacing unit consists of:

Township 6 North, Range 67 West (Weld County):
Section 19: E2SE
Section 20: S2

Total Acres: 397

The 30 day notification time period has passed and we have not yet received any objections to such well locations or proposed spacing unit, therefore Great Western hereby requests the Director to approve the above mentioned well. Great Western respectfully requests the COGCC review the enclosed map illustrating the proposed wellbore spacing unit.

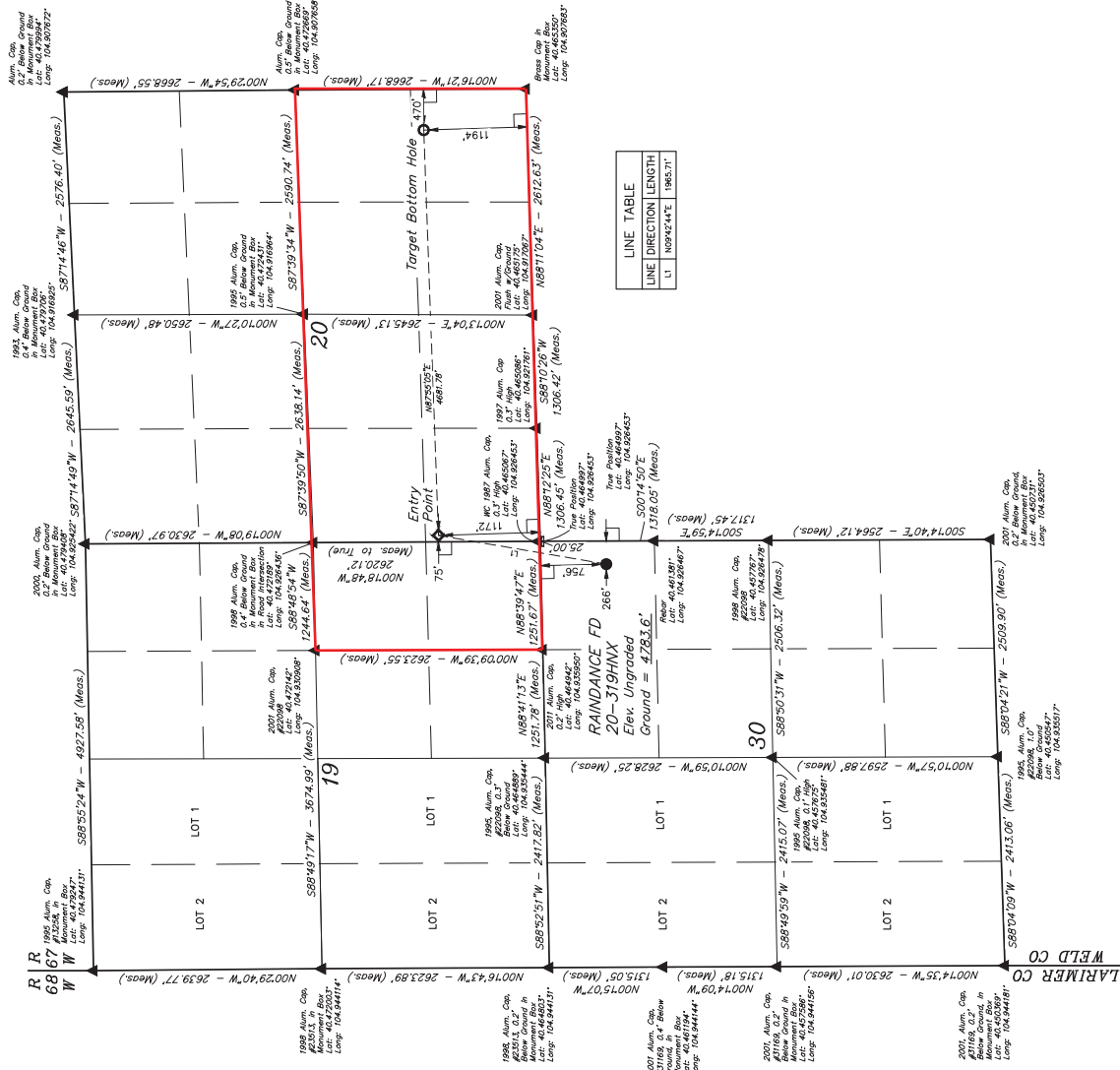
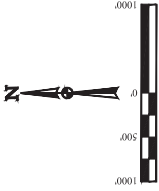
Respectfully,

Christi Ng
Senior Regulatory Analyst
Great Western Operating Company, LLC

T6N, R67W, 6th P.M.

GREAT WESTERN OPERATING COMPANY
RAINANCE FD 20-319HXX
NE 1/4 NE 1/4, SECTION 30, T6N, R67W, 6th P.M.
WELD COUNTY, COLORADO

UNITAH
BASIC OF BEARINGS
BASIC OF ELEVATION
USGS COOPERATIVE BASE NETWORK CONTROL STATION
DESIGNATION "VERMILYEA". NGS DATA SHEET LISTS THE
NAD 83 ELEVATION AS BEING 5629 FEET.



LINE TABLE		
LINE	DIRECTION	LENGTH
LI	N03°42'E	1965.71

LEGEND:
= 90° SWELL
= PROPOSED WELLHEAD
= TARGET BOTTOM HOLE
= SECTION CORNERS LOCATED (NAD 83)
= SECTION CORNERS RE-ESTABLISHED
(Not Set on Ground) (NAD 83)

NAD 83 SURFACE LOCATION		NAD 83 ENTRY POINT		NAD 83 TARGET BOTTOM HOLE	
1905 Alum. Cap. 0.4' Below Ground in Monument Bore	Lot 1, 2	1905 Alum. Cap. 0.4' Below Ground in Monument Bore	Lot 1, 2	1905 Alum. Cap. 0.4' Below Ground in Monument Bore	Lot 1, 2
1905 Alum. Cap. 0.4' Below Ground in Monument Bore	Lot 1, 2	1905 Alum. Cap. 0.4' Below Ground in Monument Bore	Lot 1, 2	1905 Alum. Cap. 0.4' Below Ground in Monument Bore	Lot 1, 2
1905 Alum. Cap. 0.4' Below Ground in Monument Bore	Lot 1, 2	1905 Alum. Cap. 0.4' Below Ground in Monument Bore	Lot 1, 2	1905 Alum. Cap. 0.4' Below Ground in Monument Bore	Lot 1, 2

REV 3 - 10-26-16 - K.B. (SHL-EP: BHI & NAME CHANGE)
UNITAH
BASIC OF BEARINGS
BASIC OF ELEVATION
USGS COOPERATIVE BASE NETWORK CONTROL STATION
DESIGNATION "VERMILYEA". NGS DATA SHEET LISTS THE
NAD 83 ELEVATION AS BEING 5629 FEET.



UNITAH
BASIC OF BEARINGS
BASIC OF ELEVATION
USGS COOPERATIVE BASE NETWORK CONTROL STATION
DESIGNATION "VERMILYEA". NGS DATA SHEET LISTS THE
NAD 83 ELEVATION AS BEING 5629 FEET.