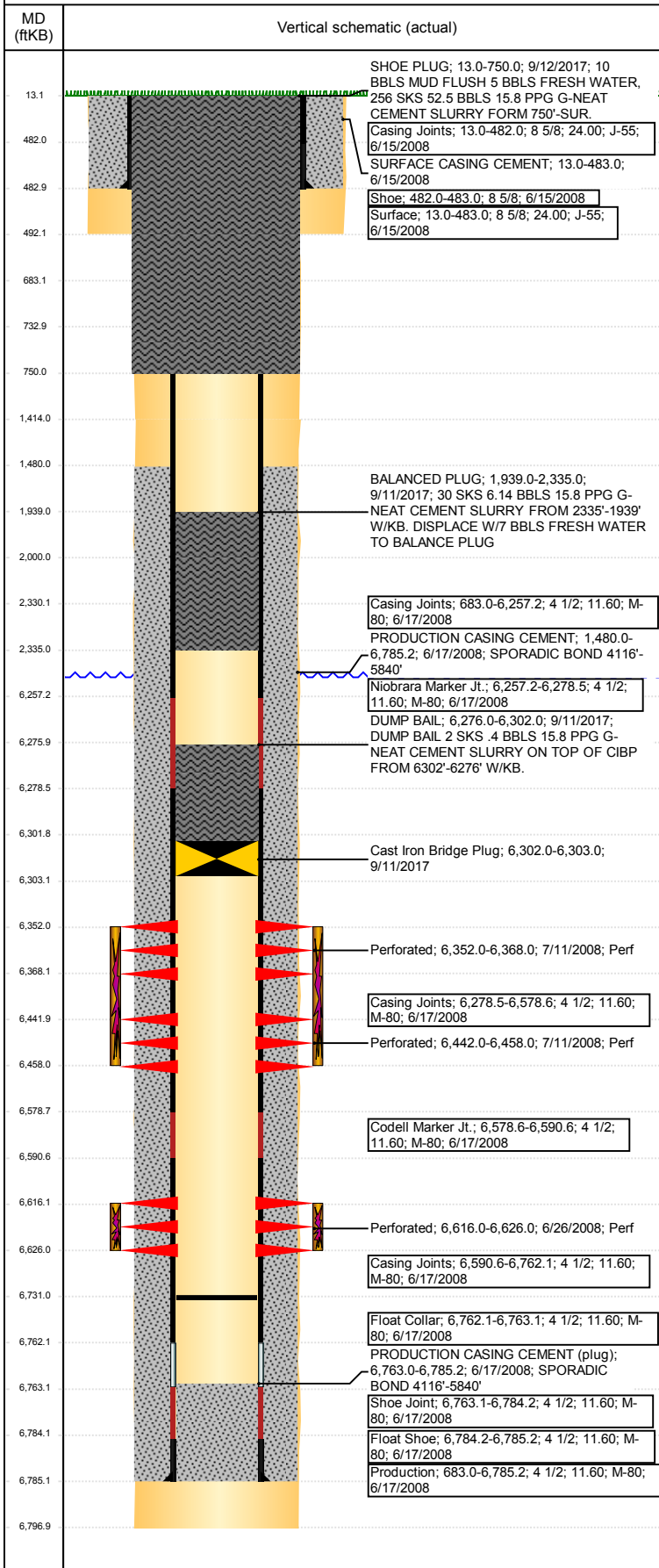


**Well Name: WELLS RANCH USX BB11-08**

VERTICAL - ORIGINAL HOLE, 10/5/2017 1:12:26 PM



## Well Header

API 05-123-26754	Business Unit DJ BASIN	District 15	Well Config VERTICAL
Original KB Elevation (ft) 4,692	KB - GL / MSL (ftKB) 13.00	Spud Date 6/15/2008	P & A Date 9/12/2017

## Comment

## Directions To Well

WCR 68 & WCR 67, EAST 0.2, SOUTH 2.8 MILE TO COW CAMP, EAST 0.2, SOUTH 0.4, SOUTHEAST 0.4, SOUTH 0.9 MILE, SOUTHEAST 0.5, SOUTH 0.1, NW 0.1 INTO LOCATION.

## Congressional Location

Quarter 3 SE	Quarter 4 NE	Section 11	Township 5	Twnshp N/S Dir N	Range 63	Range E/W Dir W
-----------------	-----------------	---------------	---------------	---------------------	-------------	--------------------

## Bottom Hole Location

North-South Distance (ft)	From N or S Line	East-West Distance (ft)	From E or W Line
---------------------------	------------------	-------------------------	------------------

## Plug Back Total Depths

Date	Depth (ftKB)	Method	Com
6/17/2008	6,763.0	CASING TALLY	FLOAT COLLAR
6/23/2008	6,727.0	CASED HOLE LOG	DEPTH LOGGER ON CBL
7/25/2008	6,731.0	TUBING TALLY	DRILL CIFT P W/ SHOE AND CHASE DOWN TO 67...

## Wellbore Sections

Section Des	Size (in)	Act Top, MD (ftKB)	Act Btm, MD (ftKB)
SURFACE	12 1/4	13	492
PRODUCTION	7 7/8	492	1,414
PRODUCTION	7 7/8	1414	6,797

## Zone Statuses

Zone Name	Status Date	Status	Fluid Type	Job	Prod Method
CODELL	7/15/2008	PR		DRILLING/CO...	
CODELL	9/11/2017	P&A		ABANDON WE...	
NIOBRARA	7/15/2008	PR		DRILLING/CO...	
NIOBRARA	9/11/2017	P&A		ABANDON WE...	

## Casing Strings

### Surface, 483.0ftKB

Casing Description	Run Date	OD (in)	Wt/Len (l...)	Grade	Top, MD (ft...)	MD (ftKB)
Surface	6/15/2008	8 5/8	24.00	J-55	13.0	483.0

### Production, 6,785.2ftKB

Casing Description	Run Date	OD (in)	Wt/Len (l...)	Grade	Top, MD (ft...)	MD (ftKB)
Production	6/17/2008	4 1/2	11.60	M-80	13.0	6,785.2

## Cement

Description	Top Depth (ftKB)	Bottom Depth (ftKB)
SURFACE CASING CEMENT	13.0	483.0
PRODUCTION CASING CEMENT	1,480.0	6,785.2
Dump Bail	6,276.0	6,302.0
Balance Plug	2,000.0	2,330.0
Balance Plug	683.0	733.0
Shoe Plug	13.0	683.0
DUMP BAIL	6,276.0	6,302.0
BALANCED PLUG	1,939.0	2,335.0
SHOE PLUG	13.0	750.0

## Tubing Strings

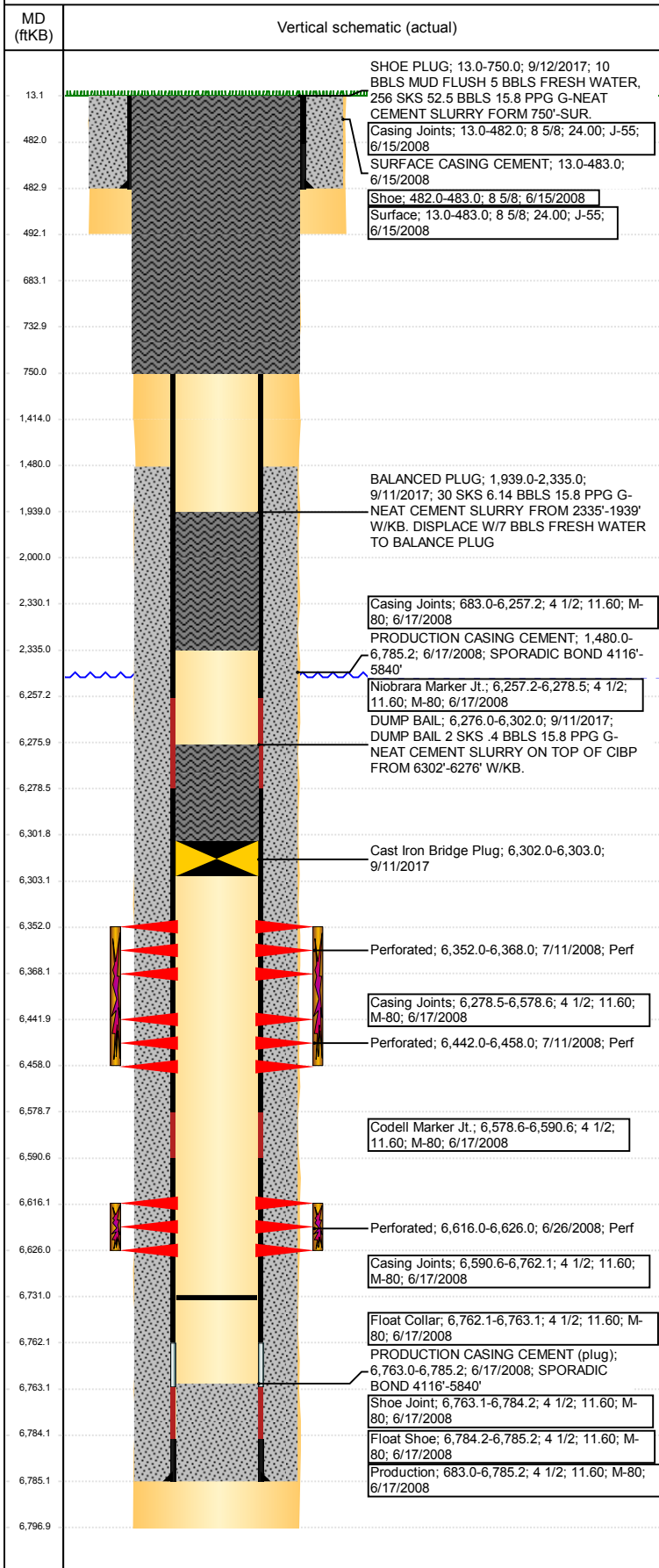
Tubing Description	Run Date	String...	ID (in)	Wt (lb/ft)	Grade	Len (ft)	Set De...
Tubing - Production	7/28/2008	2 3/8	2.00	4.70	J-55	6,595.23	

## Tubing Components

Item Des	OD (in)	Wt (lb/ft)	Grade	Jts	Len (ft)	Btm (ftKB)	Btm (TVD) (ftKB)
Tubing Pup Joint	2 3/8	4.70	J-55	1	10.00	21.0	
Tubing	2 3/8	4.70	J-55	212	6,583.83	6,604.8	
Pump Seating	2 3/8			1	1.10	6,605.9	
Nipple							
Notched collar	3 1/16			1	0.30	6,606.2	

**Well Name: WELLS RANCH USX BB11-08**

VERTICAL - ORIGINAL HOLE, 10/5/2017 1:12:27 PM



## Other In Hole

Run Date	Des	OD (in)	Top (ftKB)	Btm (ftKB)
9/11/2017	Cast Iron Bridge Plug	3.99	6,302.0	6,303.0

## Logs

Date	Type	Top, MD (ftKB)	Btm, MD (ftKB)
6/17/2008	Caliper/Comp. Density/Neutron/GR/SP/ML	2,490.0	6,775.0
6/17/2008	DIL/GR/SP/Caliper	482.0	6,795.0
6/23/2008	CBL/CCL/GR	1,380.0	6,720.0
7/9/2015	GYRO	13.0	6,500.0

## Perforation Data

Linked Zone	Bnch/St g	Sum of Entered Shot Total	Top (ftKB)	Btm (ftKB)	Date
NIOBRARA, ORIGINAL HOLE	A	64	6,352.00	6,368.00	7/11/2008
NIOBRARA, ORIGINAL HOLE	B	64	6,442.00	6,458.00	7/11/2008
CODELL, ORIGINAL HOLE		40	6,616.00	6,626.00	6/26/2008
<b>Total (Sum)</b>		<b>168</b>			

## Stimulation Intervals

Start Date	Primary Job Type	
7/11/2008	DRILLING/COMPLETION - ORIGINAL	
Technical Result	Tech Result Details	Tech Result Note
Success	According to Plan	
Comment		
(CODELL): CONCURRENT W/WELLS RANCH USX BB 11-7 & 11-2. WOLF CO, SPF-80 RAN ON THIS JOB IN PLACE OF GAS PERM. JOB WENT WELL WITH NO ISSUES TO REPORT.		
Start Date	Primary Job Type	
7/11/2008	DRILLING/COMPLETION - ORIGINAL	
Technical Result	Tech Result Details	Tech Result Note
Success	According to Plan	
Comment		
(NIOBRARA): CONCURRENT W/WELLS RANCH USX BB 11-7 & 11-2.. JOB WENT WELL WITH NO ISSUES TO REPORT.		