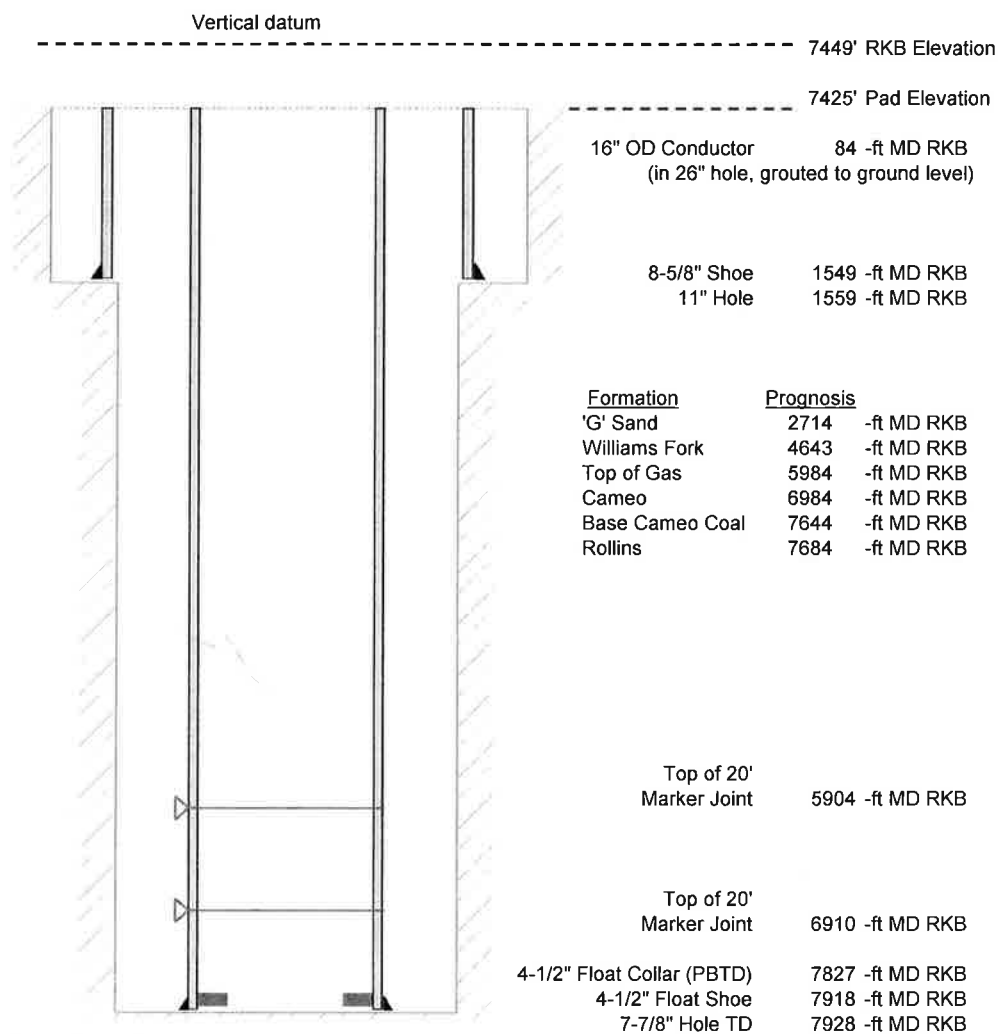


Laramie Energy, LLC
 Bruton 19-16E
 Slot B1
 H&P 290 (24-ft KB)

API #: 05-077-10380
 NE/4 NE/4 S30/T9S/R93W/6th PM
 Mesa County, CO
 Date of diagram : 8/5/2017



Cementing details

8-5/8" 24# J55 STC Surface Csg	Lead	Tail
Density (ppg)	12.3	12.8
Volume (sx)	191	124
Yield (cf/sx)	2.45	2.18
Top (ft RKB)	24	1024
Bottom (ft RKB)	1024	1549
Returns (full or partial)	full	full

4-1/2" 11.6# Nexteel-80 LTC Prod Csg	Lead	Tail
Density (ppg)	12.5	13.3
Volume (sx)	822	401
Yield (cf/sx)	1.94	1.73
Est Top (ft RKB)	1024	
Est Bottom (ft RKB)	5784	7918
Returns (full or partial)	full	full

Displacement
8.3 ppg
122 bbls

Other Remarks : Surface-22 bbls cement to surface bbls spacer to surface	Production-30
---	---------------