



---

# **Laramie Energy**

## **End of Well Cement Report**

**Bruton 19-16E 05-077-10380**  
**S:30 T:9S R:93W Mesa CO**

CallSheet #: 1111 (Surface), 1129 (Production)  
Proposal #: 13503



**Attention:** Mr. Chuck Mallary | (303) 859-3634 | [cmallary@laramie-energy.com](mailto:cmallary@laramie-energy.com)  
Laramie Energy  
1401 17th St, Suite 1400 | Denver, CO 80202

---

Dear Mr. Mallary,

Thank you for the opportunity to provide cementing services on this well. BJ Services strives to achieve complete customer satisfaction. If you have any questions regarding the services or data provided, please contact BJ Services at any time.

Sincerely,

**Zen Keith**

Technical Specialist-II | (307) 757-7178 | [Zen.Keith@bjservices.com](mailto:Zen.Keith@bjservices.com)

**Field Office**      28730 US-6, Rifle, CO 81650  
Phone: (307) 360-3062

**Sales Office**      475 17th St. Suite 460 Denver Co., 80202  
Phone: (303) 296-1158



## Table of Contents

|                                     |    |
|-------------------------------------|----|
| Surface Post Job Report .....       | 3  |
| 1 Job Details & Summary.....        | 3  |
| 1.1 Geometry .....                  | 3  |
| 1.2 Equipment / People .....        | 3  |
| 1.3 Timing.....                     | 3  |
| 1.4 General Job Information .....   | 3  |
| 1.5 Job Details .....               | 3  |
| 1.6 Job Details (cont.).....        | 3  |
| 1.7 Circulation .....               | 3  |
| 1.8 Job Execution Information ..... | 4  |
| 1.9 Job Fluid Details .....         | 4  |
| 2 Job Logs.....                     | 5  |
| 3 Water Analysis .....              | 6  |
| 4 Pump Diagrams.....                | 7  |
| Production Post Job Report .....    | 8  |
| 1 Job Details & Summary.....        | 8  |
| 1.1 Geometry .....                  | 8  |
| 1.2 Equipment / People .....        | 8  |
| 1.3 Timing.....                     | 8  |
| 1.4 General Job Information .....   | 8  |
| 1.5 Well Fluid Details .....        | 8  |
| 1.6 Job Details .....               | 8  |
| 1.7 Job Details (cont.).....        | 8  |
| 1.8 Circulation .....               | 8  |
| 1.9 Job Execution Information ..... | 9  |
| 1.10 Job Fluid Details .....        | 9  |
| 2 Job Logs.....                     | 10 |
| 3 Water Analysis .....              | 11 |
| 4 Pump Diagrams.....                | 12 |

# Surface Post Job Report

## 1 Job Details & Summary

### 1.1 Geometry

| Type      | Function | OD (in) | ID (in) | Weight (lb/ft) | Thread | Top (ft) | Bottom (ft) | Excess (%) |
|-----------|----------|---------|---------|----------------|--------|----------|-------------|------------|
| Open Hole | Outer    | n/a     | 11      | n/a            | n/a    | 60       | 1559        | 75         |
| Casing    | Inner    | 8.625   | 8.097   | 24             | STC    | 0        | 1549        | 0          |
| Casing    | Outer    | 16      | 15.25   | 65             | n/a    | 0        | 60          | 0          |

### 1.2 Equipment / People

| Unit Type          | Unit     | Employee #1       | Employee #2   | Mileage |
|--------------------|----------|-------------------|---------------|---------|
| Bulk Trailer       | E466     | Brandon Johnson   | Rhaun Cose    | 130     |
| Cement Pump        | PCP11250 | Christian McClure | Gilliam, Glen | 130     |
| Curtainside        | 402      | Gonzalez, Omar    |               | 130     |
| Light Duty Pickups | #3       | Helton, Shane     |               | 130     |

### 1.3 Timing

| Event           | Date/Time      |
|-----------------|----------------|
| Call Out        | 8/2/2017 00:00 |
| Depart Facility | 8/2/2017 00:40 |
| On Location     | 8/2/2017 02:30 |
| Rig Up Iron     | 8/2/2017 02:45 |
| Job Started     | 8/2/2017 09:10 |
| Job Completed   | 8/2/2017 10:26 |
| Rig Down Iron   | 8/2/2017 10:30 |
| Depart Location | 8/2/2017 11:45 |

### 1.4 General Job Information

| Metrics                 | Value       |
|-------------------------|-------------|
| Well Fluid Density      | 8.34 lb/gal |
| Well Fluid Type         | Water       |
| Rig Circulation Vol     | 300 bbls    |
| Rig Circulation Time    | 0.5 hours   |
| Calculated Displacement | 95.67 bbls  |
| Actual Displacement     | 95 bbls     |
| Total Spacer to Surface | 40 bbls     |
| Total CMT to Surface    | 22 bbls     |
| Well Topped Out         | No          |

### 1.5 Job Details

| Metrics                        | Value      |
|--------------------------------|------------|
| Flare Prior to Job             | No         |
| Flare During Job               | No         |
| Flare at End of Job            | No         |
| Well Full Prior to Job         | Yes        |
| Well Fluid Density Into Well   | 8.5 lb/gal |
| Well Fluid Density Out of Well | 8.5 lb/gal |

### 1.6 Job Details (cont.)

| Metrics | Value  |
|---------|--------|
| BHCT    | 82 °F  |
| BHST    | 106 °F |

### 1.7 Circulation

|                              |
|------------------------------|
| Lost Circulation Experienced |
| No                           |



### 1.8 Job Execution Information

| Job | Fluid | Product           | Function          | Density<br>(lb/gal) | Yield<br>(ft <sup>3</sup> /sk) | Water<br>Rq.<br>(gal/sk) | Water<br>Rq.<br>(gal/bbl) | Volume<br>(sk) | Volume<br>(bbl) | Top<br>(ft) |
|-----|-------|-------------------|-------------------|---------------------|--------------------------------|--------------------------|---------------------------|----------------|-----------------|-------------|
| 1   | 1     | Water             | Flush             | 8.33                |                                |                          | 42.00                     |                | 40.00           | 0           |
| 1   | 2     | ALTCem<br>S100-12 | Lead              | 12.00               | 2.53                           | 14.85                    |                           | 191.00         | 85.94           | 0           |
| 1   | 3     | ALTCem<br>S100-12 | Tail              | 12.50               | 2.22                           | 12.58                    |                           | 107.00         | 42.37           | 1024        |
| 1   | 4     | Water             | DisplacementFinal | 8.33                |                                |                          | 42.00                     |                | 95.67           | 0           |

### 1.9 Job Fluid Details

| Job | Fluid | Type | Fluid          | Product | Function        | Conc.  | Uom   |
|-----|-------|------|----------------|---------|-----------------|--------|-------|
| 1   | 2     | Lead | ALTCem S100-12 | AC3-10  | Cement          | 100.00 | %     |
| 1   | 2     | Lead | ALTCem S100-12 | ACL-10  | Accelerator     | 2.00   | lb/sk |
| 1   | 2     | Lead | ALTCem S100-12 | ACL-20  | Accelerator     | 5.00   | %BWOB |
| 1   | 2     | Lead | ALTCem S100-12 | ADF-11  | Defoamer        | 0.30   | %BWOB |
| 1   | 2     | Lead | ALTCem S100-12 | ALC-10  | LostCirculation | 0.13   | lb/sk |
| 1   | 2     | Lead | ALTCem S100-12 | AXE-30  | Extender        | 2.00   | lb/sk |
| 1   | 3     | Tail | ALTCem S100-12 | AC3-10  | Cement          | 100.00 | %     |
| 1   | 3     | Tail | ALTCem S100-12 | ACL-10  | Accelerator     | 2.00   | lb/sk |
| 1   | 3     | Tail | ALTCem S100-12 | ACL-20  | Accelerator     | 5.00   | %BWOB |
| 1   | 3     | Tail | ALTCem S100-12 | ADF-11  | Defoamer        | 0.30   | %BWOB |
| 1   | 3     | Tail | ALTCem S100-12 | ALC-10  | LostCirculation | 0.13   | lb/sk |
| 1   | 3     | Tail | ALTCem S100-12 | AXE-30  | Extender        | 2.00   | lb/sk |



## 2 Job Logs

| Line | Event              | Date<br>(MM/DD/YY) | Time<br>(HH:MM) | Density<br>(lb/gal) | Pump<br>Rate<br>(bpm) | Pump<br>Volume<br>(bbls) | Pipe<br>Pressure<br>(psi) | Comment                    |
|------|--------------------|--------------------|-----------------|---------------------|-----------------------|--------------------------|---------------------------|----------------------------|
| 1    | Requested Time     | 8/1/2017           | 18:00           |                     |                       |                          |                           | Requested time on Location |
| 2    | Yard Call          | 8/2/2017           | 00:00           |                     |                       |                          |                           | Yard Call                  |
| 3    | Journey Management | 8/2/2017           | 00:15           |                     |                       |                          |                           | Journey Management         |
| 4    | Depart Facility    | 8/2/2017           | 00:40           |                     |                       |                          |                           | Depart Facility            |
| 5    | Arrive on Location | 8/2/2017           | 02:30           |                     |                       |                          |                           | Arrive on Location         |
| 6    | Steacs Briefing    | 8/2/2017           | 02:40           |                     |                       |                          |                           | Steacs Briefing            |
| 7    | Rig up Equipment   | 8/2/2017           | 02:45           |                     |                       |                          |                           | Rig up Equipment           |
| 8    | WOR                | 8/2/2017           | 03:15           |                     |                       |                          |                           | WOR                        |
| 9    | Casing on Bottom   | 8/2/2017           | 08:30           |                     |                       |                          |                           | Casing on Bottom           |
| 10   | Steacs Briefing    | 8/2/2017           | 08:55           |                     |                       |                          |                           | Steacs Briefing            |
| 11   | Rig up Cement Head | 8/2/2017           | 09:10           |                     |                       |                          |                           | Rig Up Cement Head         |
| 12   | Load Line          | 8/2/2017           | 09:12           | 8.34                | 3.5                   | 5                        | 100                       | Load Line                  |
| 13   | Pressure Test      | 8/2/2017           | 09:14           | 8.34                |                       |                          | 3000                      | Pressure Test              |
| 14   | Fresh Water Spacer | 8/2/2017           | 09:16           | 8.34                | 5                     | 35                       | 155                       | Fresh Water Spacer         |
| 15   | Start Lead Slurry  | 8/2/2017           | 09:25           | 12                  | 3.5                   |                          | 83                        | Start Lead Cement          |
| 16   | Lead Slurry        | 8/2/2017           | 09:30           | 12                  | 5                     | 25                       | 220                       | 25 Bbls Lead Cement        |
| 17   | Lead Slurry        | 8/2/2017           | 09:35           | 12                  | 5                     | 50                       | 230                       | 50 Bbls Lead Cement        |
| 18   | Lead Slurry        | 8/2/2017           | 09:40           | 12                  | 5                     | 75                       | 240                       | 75 Bbls Lead Cement        |
| 19   | Slow Rate          | 8/2/2017           | 09:41           | 12                  | 3                     |                          | 160                       | Slow Rate                  |
| 20   | Lead Slurry        | 8/2/2017           | 09:44           | 12                  |                       | 82                       | 160                       | 82 Bbls Lead Cement        |
| 21   | Start Tail Slurry  | 8/2/2017           | 09:44           | 12.5                | 5                     |                          | 265                       | Start Tail Cement          |
| 22   | Tail Slurry        | 8/2/2017           | 09:48           | 12.5                | 5                     | 25                       | 265                       | 20 Bbls Tail Cement        |
| 23   | Slow Rate          | 8/2/2017           | 09:52           | 12.5                | 3.5                   | 35                       | 175                       | Slow Rate                  |
| 24   | Tail Slurry        | 8/2/2017           | 09:55           | 12.5                |                       | 40                       |                           | 40 Bbls Tail Cement        |
| 25   | Drop Plug          | 8/2/2017           | 09:55           |                     |                       |                          |                           | Drop Plug                  |
| 26   | Start Displacement | 8/2/2017           | 09:55           | 8.34                | 4                     |                          | 96                        | Start Displacement         |
| 27   | Displacement       | 8/2/2017           | 10:07           | 8.34                | 5.5                   | 50                       | 307                       | Displacement               |
| 28   | Slow Rate          | 8/2/2017           | 10:14           | 8.34                | 3.75                  | 85                       | 428                       | 85 Bbls Displacement       |
| 29   | Land Plug          | 8/2/2017           | 10:16           |                     |                       |                          | 2078                      | Land Plug & Casing Test    |
| 30   | Check Float        | 8/2/2017           | 10:26           |                     |                       |                          |                           | Good & Good Casing Test    |



### 3 Water Analysis

| Metrics          | Value            | Recommended |
|------------------|------------------|-------------|
| Water Source     | Upright Rig Tank |             |
| Temperature      | 67 °F            | 50-80 °F    |
| pH Level         | 6                | 5.5-8.5     |
| Chlorides        | 29 mg/L          | 0-3000 mg/L |
| Total Alkalinity | 180              | 0-1000      |
| Total Hardness   | 250 mg/L         | 0-500 mg/L  |
| Carbonates       | N/A mg/L         | 0-100 mg/L  |
| Sulfates         | 200 mg/L         | 0-1500 mg/L |
| Potassium        | 1500 mg/L        | 0-3000 mg/L |
| Iron             | 0 mg/L           | 0-300 mg/L  |



## 4 Pump Diagrams

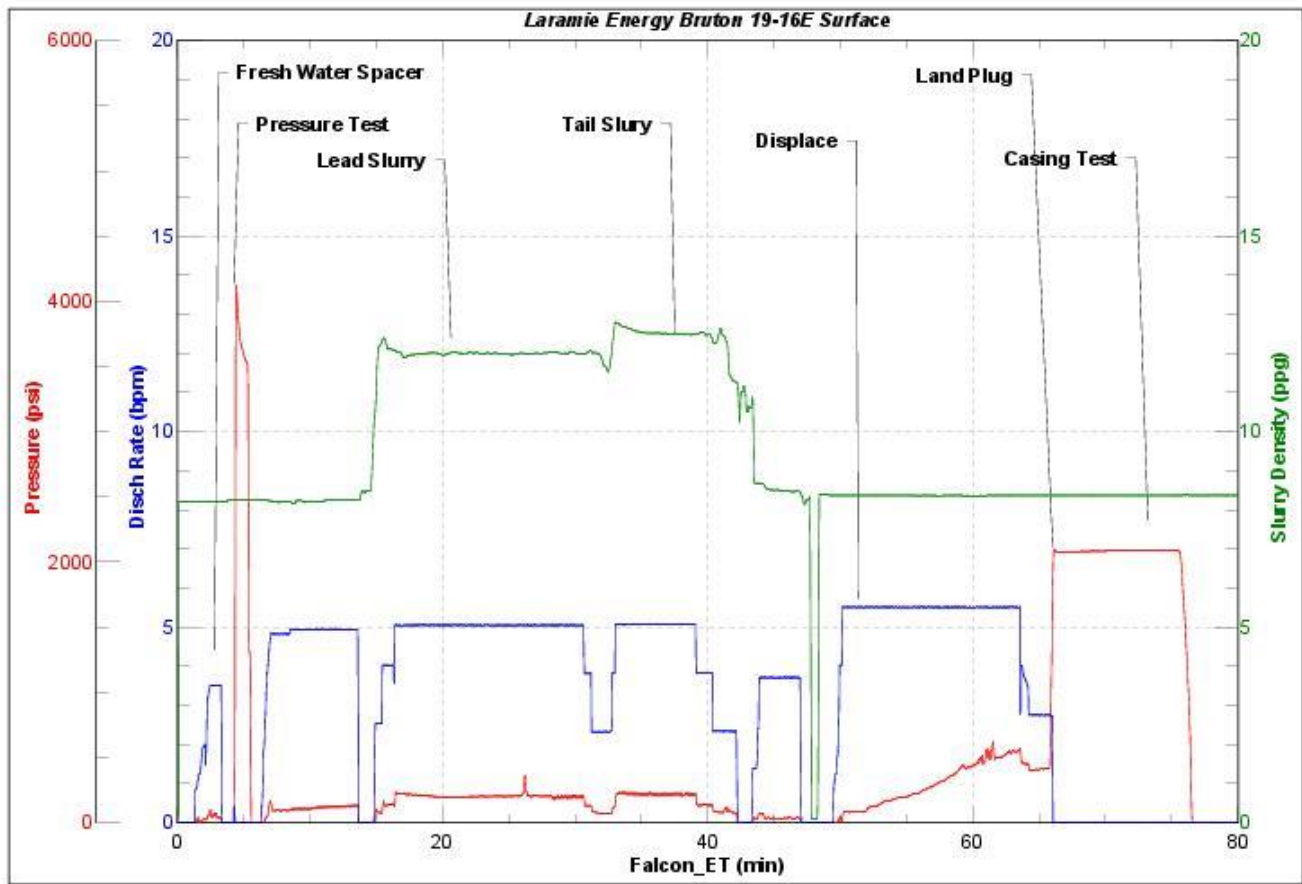


JobMaster Program Version 4.02C1

Job Number: 1111

Customer: Laramie Energy

Well Name: Bruton 19-16E



BJ Services

Job Start: Wednesday, August 02, 2017



# Production Post Job Report

## 1 Job Details & Summary

### 1.1 Geometry

| Type      | Function | OD (in) | ID (in) | Weight (lb/ft) | Thread | Top (ft) | Bottom (ft) | Excess (%) |
|-----------|----------|---------|---------|----------------|--------|----------|-------------|------------|
| Casing    | Outer    | 8.625   | 8.097   | 24             | STC    | 0        | 1549        | 0          |
| Casing    | Inner    | 4.5     | 4       | 11.6           | LTC    | 0        | 7918        | 0          |
| Open Hole | Outer    | n/a     | 8.88    | n/a            | n/a    | 1524     | 7928        | 10         |

### 1.2 Equipment / People

| Unit Type          | Unit     | Employee #1       | Employee #2    | Mileage |
|--------------------|----------|-------------------|----------------|---------|
| Silo               | 6 (Silo) |                   |                |         |
| Silo               | 7 (silo) |                   |                |         |
| Bulk Trailer       | E391     | Rhaun Cose        |                | 120     |
| Cement Pump        | PPC11250 | Christian McClure |                | 120     |
| Light Duty Pickups | 4        | Shane Helton      | Allen Tippetts | 120     |
| Cement Chemical    | 401      | Brandon Johnson   |                | 120     |

### 1.3 Timing

| Event           | Date/Time      |
|-----------------|----------------|
| Call Out        | 8/5/2017 05:00 |
| Depart Facility | 8/5/2017 06:40 |
| On Location     | 8/5/2017 08:30 |
| Rig Up Iron     | 8/5/2017 08:50 |
| Job Started     | 8/5/2017 13:00 |
| Job Completed   | 8/5/2017 15:22 |
| Rig Down Iron   | 8/5/2017 15:30 |
| Depart Location | 8/5/2017 16:45 |

### 1.4 General Job Information

| Metrics                 | Value       |
|-------------------------|-------------|
| Well Fluid Density      | 9.7 lb/gal  |
| Well Fluid Type         | WBM         |
| Rig Circulation Vol     | 600 bbls    |
| Rig Circulation Time    | 1 hours     |
| Calculated Displacement | 121.63 bbls |
| Actual Displacement     | 120.5 bbls  |
| Total Spacer to Surface | 30 bbls     |
| Total CMT to Surface    | 0 bbls      |

### 1.5 Well Fluid Details

| Metrics           | Value |
|-------------------|-------|
| Plastic Viscosity | 31    |
| Yield Point       | 30    |
| 10 sec. SGS       | 7     |
| 10 min. SGS       | 24    |
| 30 min. SGS       | 57    |
| Filtrate          | 0.1   |
| Flow Line Temp.   | 81    |

### 1.6 Job Details

| Metrics                        | Value      |
|--------------------------------|------------|
| Flare Prior to Job             | No         |
| Flare During Job               | No         |
| Flare at End of Job            | No         |
| Well Full Prior to Job         | Yes        |
| Well Fluid Density Into Well   | 9.7 lb/gal |
| Well Fluid Density Out of Well | 9.7 lb/gal |

### 1.7 Job Details (cont.)

| Metrics | Value  |
|---------|--------|
| BHCT    | 177 °F |
| BHST    | 238 °F |

### 1.8 Circulation

|                              |
|------------------------------|
| Lost Circulation Experienced |
| No                           |

**1.9 Job Execution Information**

| Job | Fluid | Product         | Function          | Density (lb/gal) | Yield (ft <sup>3</sup> /sk) | Water Rq. (gal/sk) | Water Rq. (gal/bbl) | Volume (sks) | Volume (bbl) | Top (ft) |
|-----|-------|-----------------|-------------------|------------------|-----------------------------|--------------------|---------------------|--------------|--------------|----------|
| 1   | 1     | CD Spacer       | Spacer            | 11.00            |                             |                    | 33.15               |              | 40.00        | 115      |
| 1   | 2     | ALTCem P100-X2  | Lead              | 12.70            | 1.97                        | 11.07              |                     | 822.00       | 288.88       | 1024     |
| 1   | 3     | ALTCem P70-X1   | Tail              | 13.50            | 1.90                        | 9.55               |                     | 401.00       | 135.66       | 5784     |
| 1   | 4     | Water w/ ASF-50 | DisplacementFinal | 8.33             |                             |                    | 41.92               |              | 121.63       | 0        |

**1.10 Job Fluid Details**

| Job | Fluid | Type              | Fluid           | Product | Function              | Conc.  | Uom     |
|-----|-------|-------------------|-----------------|---------|-----------------------|--------|---------|
| 1   | 1     | Spacer            | CD Spacer       | ASR-20  | StrengthRetrogression | 179.73 | lb/bbl  |
| 1   | 1     | Spacer            | CD Spacer       | AR-10   | Retarder              | 1.40   | lb/bbl  |
| 1   | 1     | Spacer            | CD Spacer       | ASF-20  | Surfactant            | 0.50   | gal/bbl |
| 1   | 1     | Spacer            | CD Spacer       | AVS-10  | Viscosifier           | 0.80   | lb/bbl  |
| 1   | 2     | Lead              | ALTCem P100-X2  | AC3-10  | Cement                | 100.00 | %       |
| 1   | 2     | Lead              | ALTCem P100-X2  | ABX-30  | BondEnhancer          | 0.30   | %BWOB   |
| 1   | 2     | Lead              | ALTCem P100-X2  | ADF-11  | Defoamer              | 0.30   | %BWOB   |
| 1   | 2     | Lead              | ALTCem P100-X2  | ADS-10  | Dispersant            | 0.10   | %BWOB   |
| 1   | 2     | Lead              | ALTCem P100-X2  | AR-10   | Retarder              | 0.50   | %BWOB   |
| 1   | 2     | Lead              | ALTCem P100-X2  | AVS-10  | Viscosifier           | 0.10   | %BWOB   |
| 1   | 3     | Tail              | ALTCem P70-X1   | ACG-10  | Cement                | 70.00  | %       |
| 1   | 3     | Tail              | ALTCem P70-X1   | AFA-10  | Extender              | 20.00  | %       |
| 1   | 3     | Tail              | ALTCem P70-X1   | AXE-20  | Extender              | 10.00  | %       |
| 1   | 3     | Tail              | ALTCem P70-X1   | ABX-30  | BondEnhancer          | 0.20   | %BWOB   |
| 1   | 3     | Tail              | ALTCem P70-X1   | ADF-11  | Defoamer              | 0.30   | %BWOB   |
| 1   | 3     | Tail              | ALTCem P70-X1   | AFL-10  | FluidLoss             | 0.40   | %BWOB   |
| 1   | 3     | Tail              | ALTCem P70-X1   | AR-10   | Retarder              | 0.30   | %BWOB   |
| 1   | 3     | Tail              | ALTCem P70-X1   | ASR-20  | StrengthRetrogression | 25.00  | %BWOB   |
| 1   | 3     | Tail              | ALTCem P70-X1   | AVS-50  | Viscosifier           | 6.00   | %BWOB   |
| 1   | 4     | DisplacementFinal | Water w/ ASF-50 | ASF-50  | ClayProtection        | 0.08   | gal/bbl |



## 2 Job Logs

| Line | Event               | Date<br>(MM/DD/YY) | Time<br>(HH:MM) | Density<br>(lb/gal) | Pump<br>Rate<br>(bpm) | Pump<br>Volume<br>(bbls) | Pipe<br>Pressure<br>(psi) | Comment                        |
|------|---------------------|--------------------|-----------------|---------------------|-----------------------|--------------------------|---------------------------|--------------------------------|
| 1    | Customer Requested  | 8/5/2017           | 11:00           |                     |                       |                          |                           | Customer Requested on Location |
| 2    | Yard Call           | 8/5/2017           | 06:00           |                     |                       |                          |                           | Yard Call                      |
| 3    | Journey Management  | 8/5/2017           | 06:30           |                     |                       |                          |                           | Journey Management             |
| 4    | Depart Facility     | 8/5/2017           | 06:40           |                     |                       |                          |                           | Depart Facility                |
| 5    | Arrived on Location | 8/5/2017           | 08:30           |                     |                       |                          |                           | Arrived on Location            |
| 6    | Steacs Briefing     | 8/5/2017           | 08:45           |                     |                       |                          |                           | Steacs Briefing                |
| 7    | Rig Up Equipment    | 8/5/2017           | 08:50           |                     |                       |                          |                           | Rig Up Equipment               |
| 8    | WOR                 | 8/5/2017           | 09:15           |                     |                       |                          |                           | WOR                            |
| 9    | Casing On Bottom    | 8/5/2017           | 12:00           |                     |                       |                          |                           | Casing On Bottom               |
| 10   | Rig Circulated      | 8/5/2017           | 13:00           |                     |                       |                          |                           | Rig Circulated                 |
| 11   | Steacs Briefing     | 8/5/2017           | 12:45           |                     |                       |                          |                           | Steacs Briefing                |
| 12   | Rig Up Cement Head  | 8/5/2017           | 13:00           |                     |                       |                          |                           | Rig Up Cement Head             |
| 13   | Load Line           | 8/5/2017           | 13:05           | 8.34                |                       | 5                        |                           | Load Line                      |
| 14   | Pressure Test       | 8/5/2017           | 13:08           | 8.34                |                       |                          | 5000                      | Pressure Test                  |
| 15   | Weighted Spacer     | 8/5/2017           | 13:15           | 11                  |                       | 40                       |                           | Start Weighted Spacer          |
| 16   | Start Lead Slurry   | 8/5/2017           | 13:25           | 12.7                | 5                     |                          | 291                       | Start Lead Cement              |
| 17   | Lead Slurry         | 8/5/2017           | 13:35           | 12.7                | 5                     | 50                       | 302                       | 50 Bbls Lead Cement            |
| 18   | Lead Slurry         | 8/5/2017           | 13:44           | 12.7                | 6.8                   | 100                      | 509                       | 100 Bbls Lead Cement           |
| 19   | Lead Slurry         | 8/5/2017           | 13:52           | 12.7                | 6.8                   | 150                      | 504                       | 150 Bbls Lead Cement           |
| 20   | Lead Slurry         | 8/5/2017           | 13:58           | 12.7                | 6.8                   | 200                      | 523                       | 200 Bbls Lead Cement           |
| 21   | Lead Slurry         | 8/5/2017           | 14:07           | 12.7                | 4                     | 250                      | 203                       | 250 Bbls Lead Cement           |
| 22   | Lead Slurry         | 8/5/2017           | 14:11           | 12.7                | 4                     | 278                      | 205                       | 278 Bbls Lead Cement           |
| 23   | Start Tail Slurry   | 8/5/2017           | 14:15           | 13.5                | 5                     |                          | 425                       | Start Tail Cement              |
| 24   | Tail Slurry         | 8/5/2017           | 14:20           | 13.5                | 5                     | 50                       | 465                       | 50 Bbls Tail Cement            |
| 25   | Tail Slurry         | 8/5/2017           | 14:34           | 13.5                | 5                     | 100                      | 446                       | 100 Bbls Tail Cement           |
| 26   | Tail Slurry         | 8/5/2017           | 14:37           | 13.5                | 3                     | 125                      | 203                       | 125 Bbls Tail Cement Slow Rate |
| 27   | Tail Slurry         | 8/5/2017           | 14:43           | 13.5                |                       | 134                      |                           | 134 Bbls Tail Cement           |
| 28   | Shut Down           | 8/5/2017           | 14:44           |                     |                       |                          |                           | Wash Pumps and Line            |
| 29   | Drop Plug           | 8/5/2017           | 14:49           | 8.34                |                       |                          |                           | Drop Plug                      |
| 30   | Displacement        | 8/5/2017           | 14:49           | 8.34                | 7                     |                          | 188                       | Start Displacement             |
| 31   | Displacement        | 8/5/2017           | 14:58           | 8.34                | 7                     | 50                       | 1906                      | 50 Bbls Displacement           |
| 32   | Displacement        | 8/5/2017           | 15:05           | 8.34                | 5                     | 100                      | 1850                      | 100 Bbls Displacement          |
| 33   | Slow Rate           | 8/5/2017           | 15:08           | 8.34                | 3                     | 110                      | 1822                      | Slow Rate                      |
| 34   | Land Plug           | 8/5/2017           | 15:12           |                     |                       |                          | 2964                      | Land Plug & start Casing Test  |
| 35   | Check Float         | 8/5/2017           | 15:22           |                     |                       |                          |                           | Check Float Good               |



### 3 Water Analysis

| Metrics          | Value            | Recommended |
|------------------|------------------|-------------|
| Water Source     | Upright Rig Tank |             |
| Temperature      | 72.5 °F          | 50-80 °F    |
| pH Level         | 6                | 5.5-8.5     |
| Chlorides        | 29 mg/L          | 0-3000 mg/L |
| Total Alkalinity | 120              | 0-1000      |
| Total Hardness   | 250 mg/L         | 0-500 mg/L  |
| Carbonates       | N/A mg/L         | 0-100 mg/L  |
| Sulfates         | 200 mg/L         | 0-1500 mg/L |
| Potassium        | 1500 mg/L        | 0-3000 mg/L |
| Iron             | 0 mg/L           | 0-300 mg/L  |

## 4 Pump Diagrams

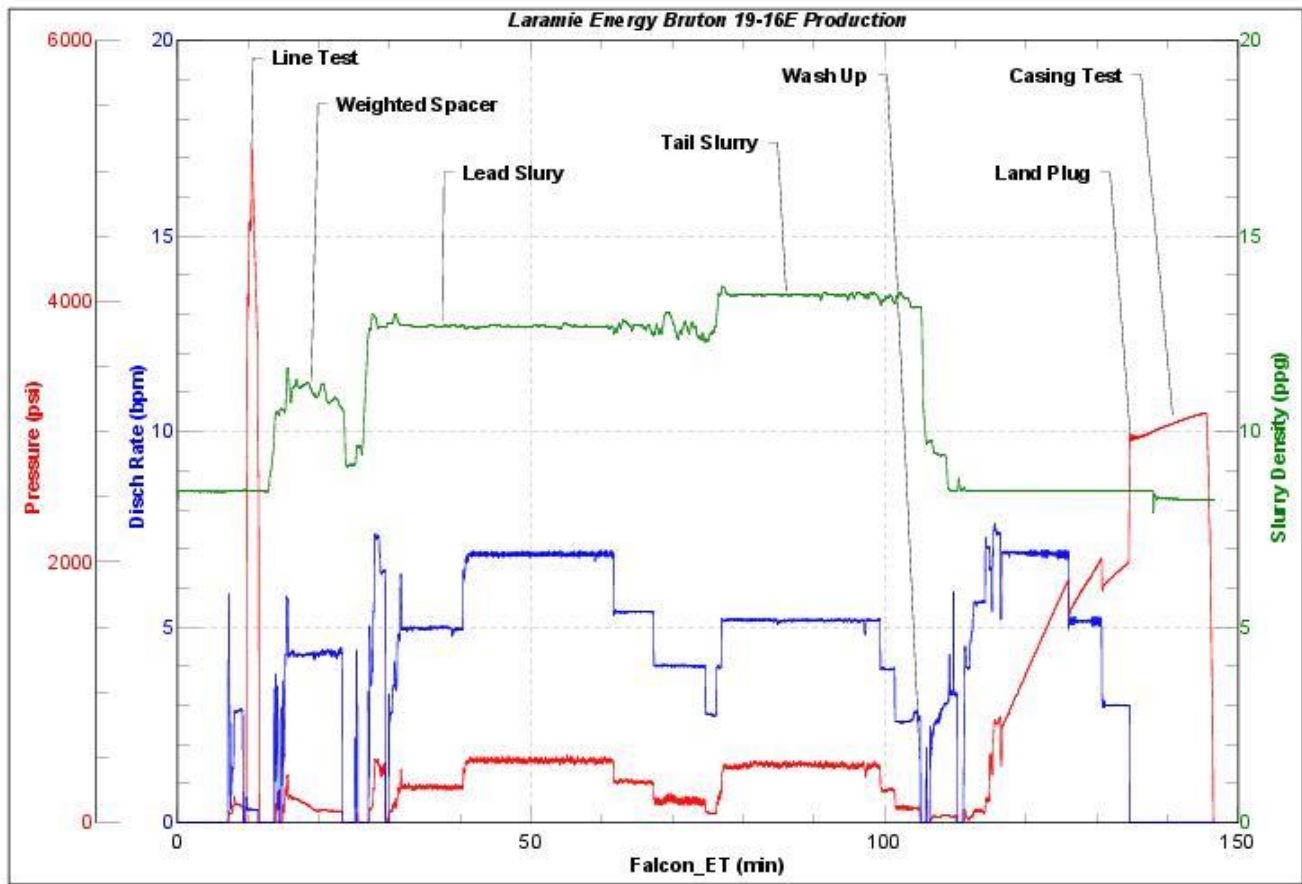


JobMaster Program Version 4.02C1

Job Number: 1129

Customer: Laramie Energy

Well Name: Bruton 19-16E



BJ Services

Job Start: Saturday, August 05, 2017