



Project: Mesa County, CO
Site: Bruton 30-01 Pad
Well: Bruton 19-17E
Wellbore: Wellbore #1
Design: Design #2
Latitude: 39.255269
Longitude: -107.806206
Ground Level: 7425.0
well @ 7449.0usft (H&P #290)



PROJECT DETAILS: Mesa County, CO

Geodetic System: US State Plane 1983
Datum: North American Datum 1983
Ellipsoid: GRS 1980
Zone: Colorado Central Zone
System Datum: Mean Sea Level

REFERENCE INFORMATION

Co-ordinate (N/E) Reference: Well Bruton 19-17E, True North
Vertical (TVD) Reference: well @ 7449.0usft (H&P #290)
Section (VS) Reference: Slot - (0.0N, 0.0E)
Measured Depth Reference: well @ 7449.0usft (H&P #290)
Calculation Method: Minimum Curvature

WELL DETAILS: Bruton 19-17E

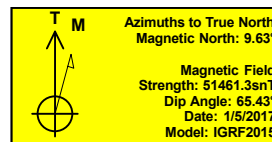
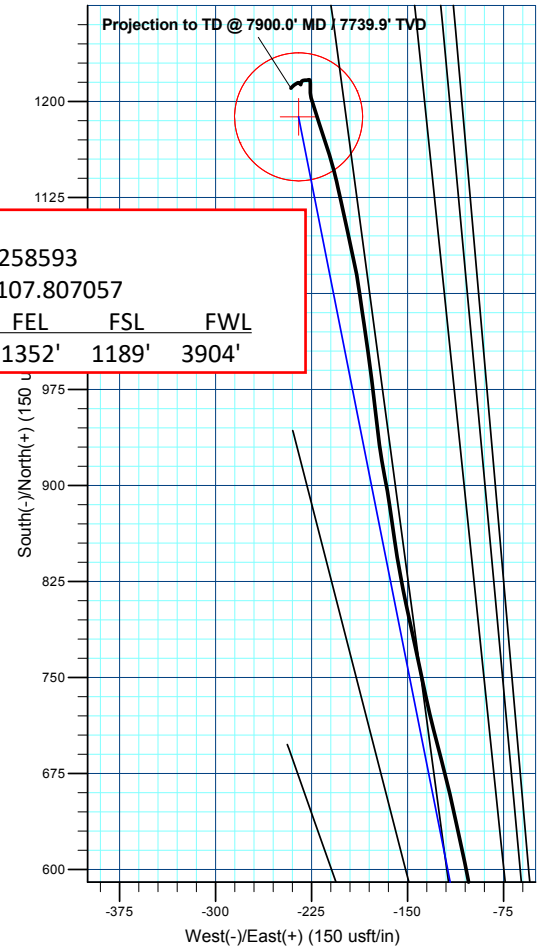
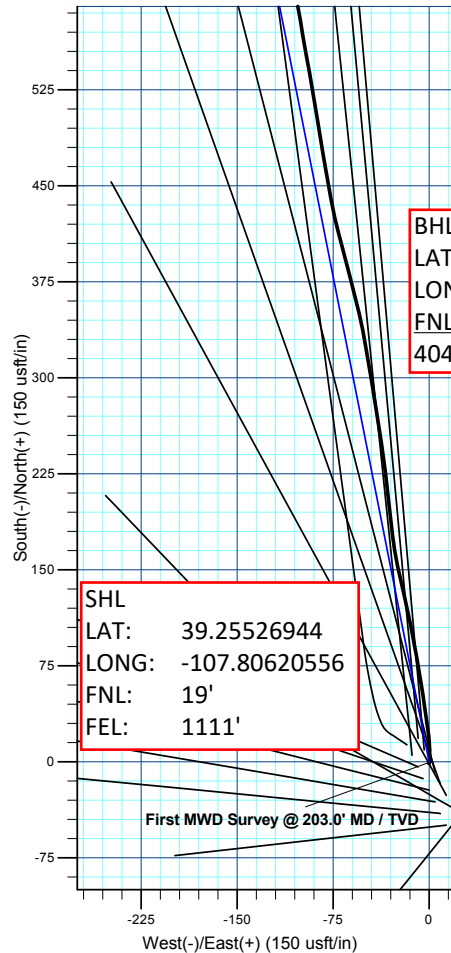
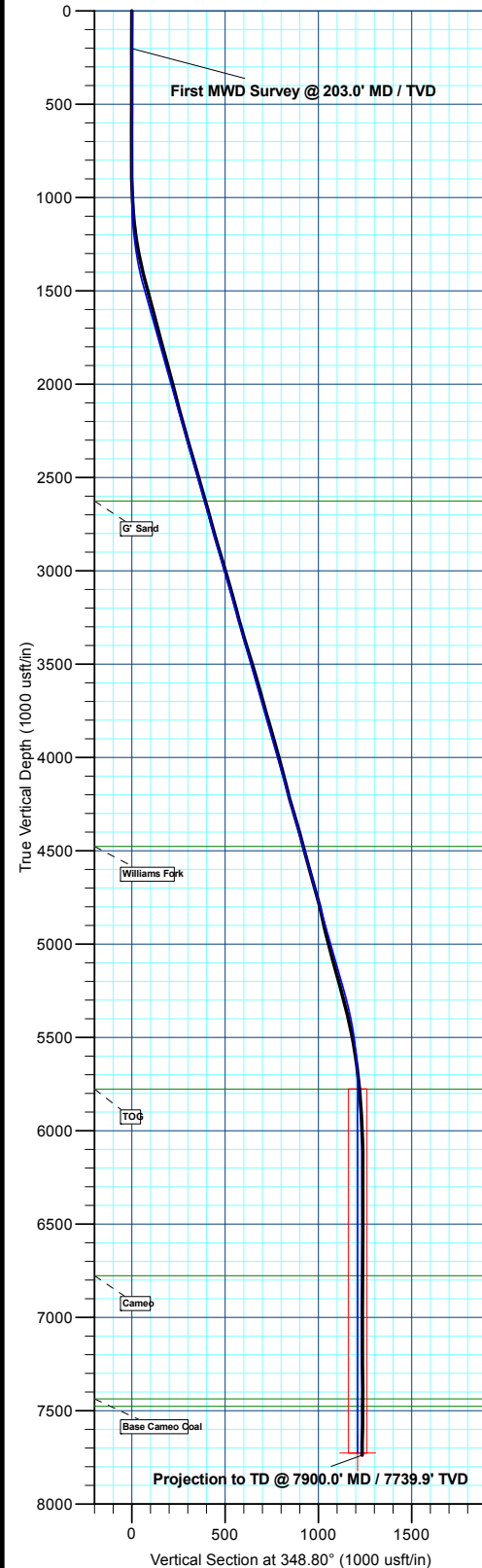
+N/-S	+E/-W	Northing	Ground Level: Easting	7425.0 39.255269	Latitude	Longitude
0.0	0.0	1526154.54	2347031.99		39.255269	-107.806206

WELLBORE TARGET DETAILS (MAP CO-ORDINATES AND LAT/LONG)

Name	TVD	+N/-S	+E/-W	Northing	Easting	Latitude	Longitude
BRUTON 19-17E	7727.0	1187.9	-235.1	1527348.05	2346827.08	39.258531	-107.807036

ANNOTATIONS

MD	Inc	Azi	TVD	+N/-S	+E/-W	Vsect	Departure	Annotation
203.0	0.30	143.30	203.0	-0.4	0.3	-0.5	0.5	First MWD Survey @ 203.0' MD / TVD
7900.0	1.30	222.40	7739.9	1210.3	-241.1	1234.1	1264.6	Projection to TD @ 7900.0' MD / 7739.9' TVD



FORMATION TOP DETAILS		
TVDPath	MDPath	Formation
2627.0	2678.0	G' Sand
4477.0	4601.6	Williams Fork
5777.0	5939.3	TOG
6777.0	6939.3	Cameo
7437.0	7599.3	Base Cameo Coal
7477.0	7639.3	Rollins

Plan: Design #2 (Bruton 19-17E/Wellbore #1)

Created By: Will Jircik Date: 8:42, July 21 2017