



Project: Mesa County, CO
 Site: Bruton 30-01 Pad
 Well: Bruton 19-17W
 Wellbore: Wellbore #1
 Design: Design #2
 Latitude: 39.255258
 Longitude: -107.806236
 Ground Level: 7425.0
 well @ 7449.0usft (H&P #290)



PROJECT DETAILS: Mesa County, CO

Geodetic System: US State Plane 1983
 Datum: North American Datum 1983
 Ellipsoid: GRS 1980
 Zone: Colorado Central Zone
 System Datum: Mean Sea Level

REFERENCE INFORMATION

Co-ordinate (N/E) Reference: Well Bruton 19-17W, True North
 Vertical (TVD) Reference: well @ 7449.0usft (H&P #290)
 Section (VS) Reference: Slot - (0.0N, 0.0E)
 Measured Depth Reference: well @ 7449.0usft (H&P #290)
 Calculation Method: Minimum Curvature

WELL DETAILS: Bruton 19-17W

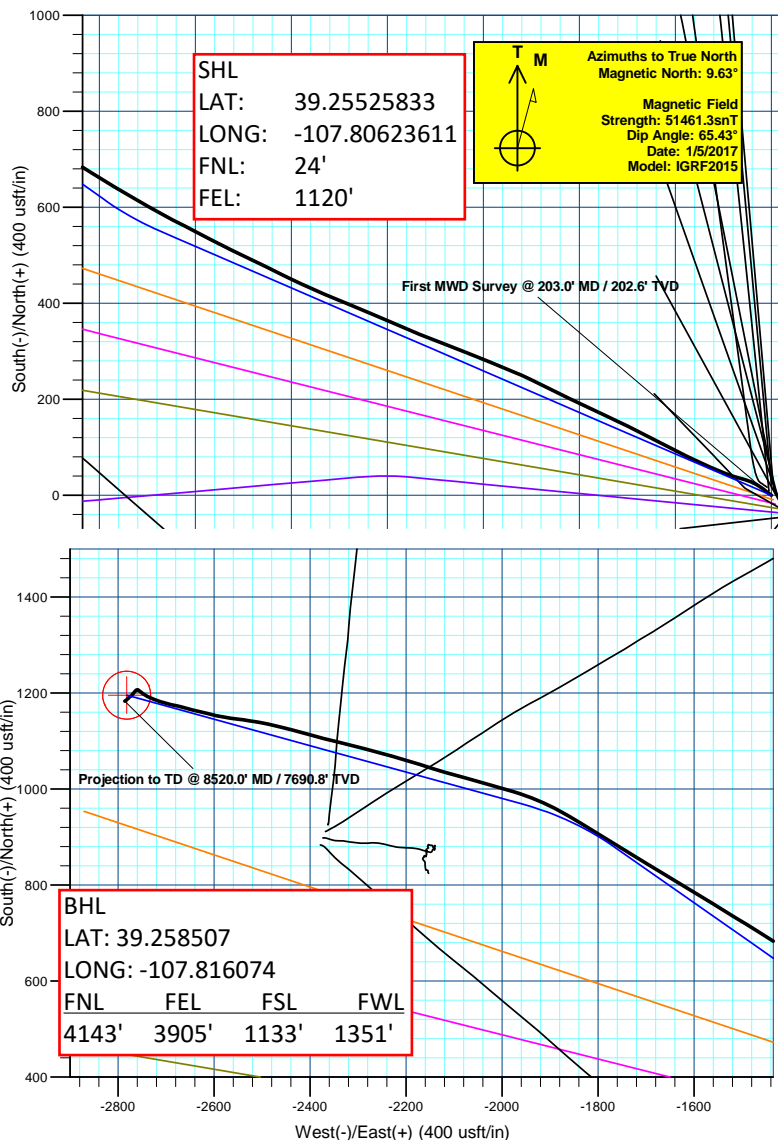
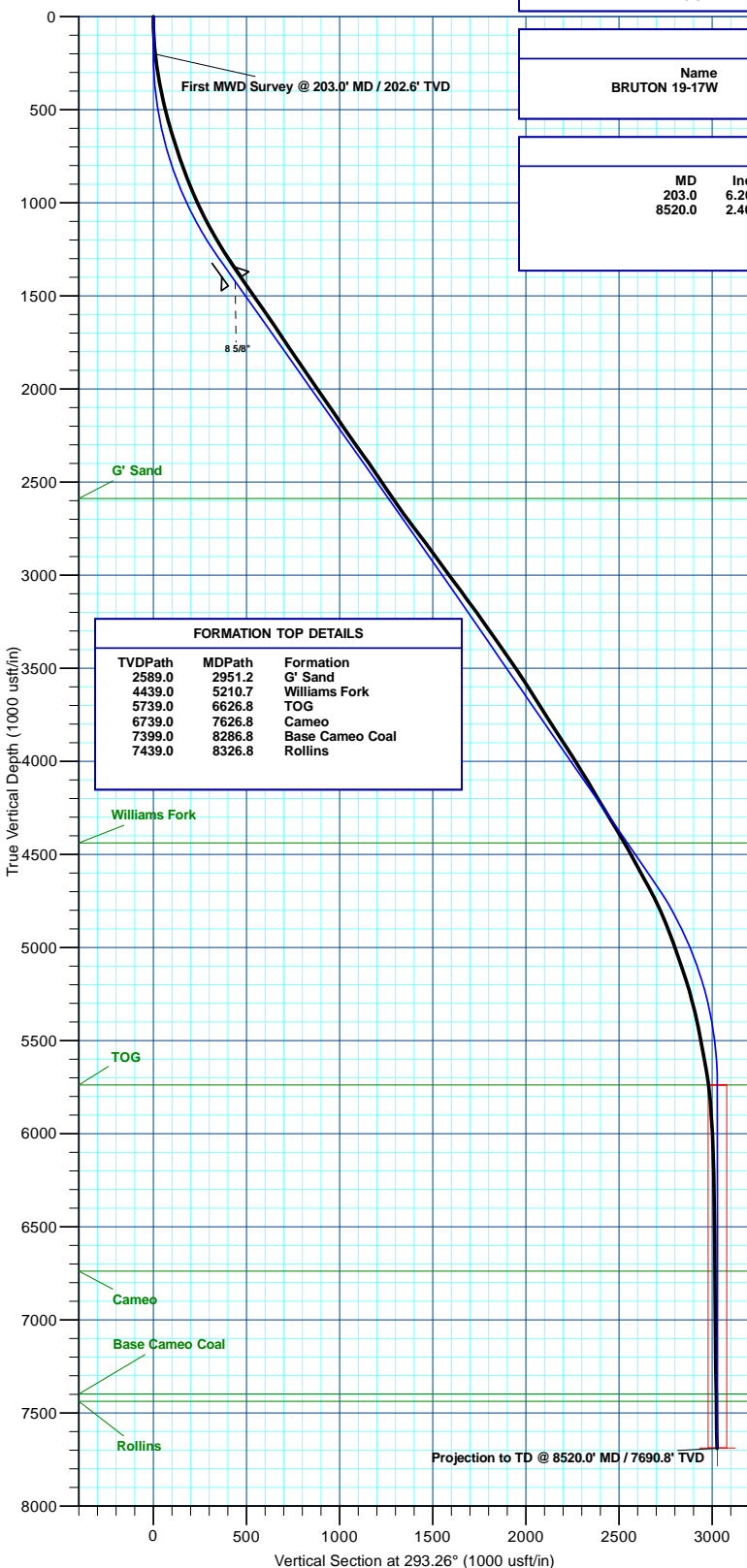
| +N/-S | +E/-W | Northing | Ground Level: Easting | 7425.0 Latitude | Longitude |
|-------|-------|------------|--------------------------|--------------------|-------------|
| 0.0 | 0.0 | 1526150.72 | 2347023.24 | 39.255258 | -107.806236 |

WELLBORE TARGET DETAILS (MAP CO-ORDINATES AND LAT/LONG)

| Name | TVD | +N/-S | +E/-W | Northing | Easting | Latitude | Longitude |
|---------------|--------|--------|---------|------------|------------|-----------|-------------|
| BRUTON 19-17W | 7689.0 | 1195.8 | -2781.9 | 1527416.71 | 2344272.55 | 39.258541 | -107.816061 |

ANNOTATIONS

| MD | Inc | Azi | TVD | +N/-S | +E/-W | Vsect | Departure | Annotation |
|--------|------|--------|--------|--------|---------|--------|-----------|---|
| 203.0 | 6.20 | 308.10 | 202.6 | 6.8 | -8.6 | 10.6 | 11.0 | First MWD Survey @ 203.0' MD / 202.6' TVD |
| 8520.0 | 2.40 | 231.20 | 7690.8 | 1183.3 | -2785.6 | 3026.5 | 3068.1 | Projection to TD @ 8520.0' MD / 7690.8' TVD |



Plan: Design #2 (Bruton 19-17W/Wellbore #1)

Created By: Will Jircik Date: 5:25, July 17 2017