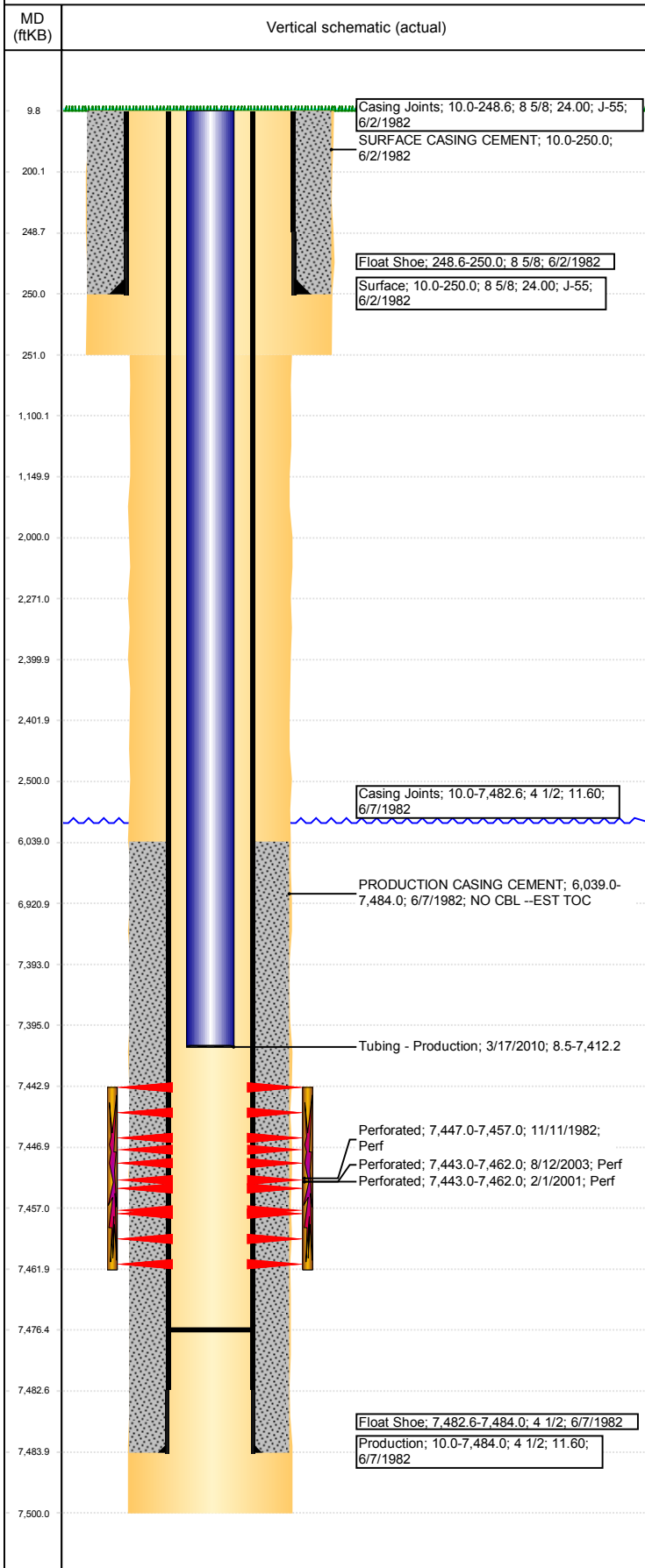


Operations Wellbore Schematic Report

Well Name: LUNDVALL 03

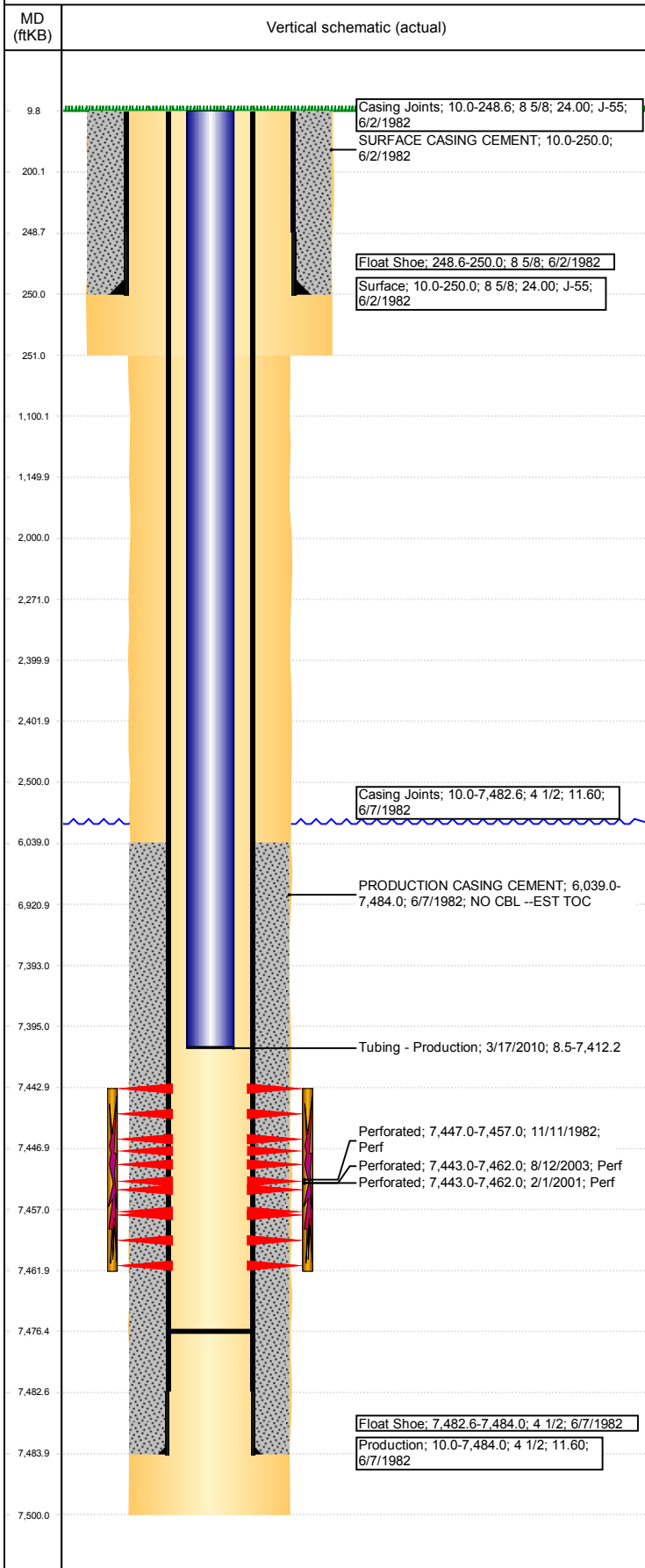
VERTICAL - ORIGINAL HOLE, 10/3/2017 3:37:12 PM



| Well Header | | | | | | | | | | | | | | |
|---|-------------|-------------------------------|------------------|-----------------------|---------------------------|-------------------------|------------------------------------|---|------------|----------------|----------------|----------|-----------|--|
| API 05-123-10751 | | Business Unit DJ BASIN | | District 15 | | Well Config VERTICAL | | | | | | | | |
| Original KB Elevation (ft) 4,973 | | KB - GL / MSL (ftKB) 10.00 | | Spud Date 6/2/1982 | | P & A Date | | | | | | | | |
| Comment VERY LITTLE DATA- NO DATA ON REFRAC, EST TOC | | | | | | | | | | | | | | |
| Directions To Well 95TH AVE & 37TH ST, SOUTH 4/10, EAST 1/10, NORTH 1/10 INTO. | | | | | | | | | | | | | | |
| Current PBTD (mKB) ORIGINAL HOLE - 7,476.3 | | | | | | | | | | | | | | |
| Surface Location (Congressional) | | | | | | | | | | | | | | |
| Qtr 3 SW | Qtr 4 NW | Section 30 | Twnshp 5 | Twنش.... N | Range 66 | Rng E/... W | Actual Latitude (°) 40.37237850 | Actual Longitude (°) -104.82974274 | | | | | | |
| Bottom Hole Location | | | | | | | | | | | | | | |
| North-South Distance (ft) | | | From N or S Line | | East-West Distance (ft) | | From E or W Line | | | | | | | |
| Plug Back Total Depths | | | | | | | | | | | | | | |
| Date | | Depth (ftKB) | | Method | | Com | | | | | | | | |
| 6/7/1982 | | 7,475.0 | | TAG | | | | | | | | | | |
| 3/17/2010 | | 7,476.3 | | TBG TAG | | | | | | | | | | |
| Wellbore Sections | | | | | | | | | | | | | | |
| Section Des | | | | Size (in) | | Act Top, MD (ftKB) | | Act Btm, MD (ftKB) | | | | | | |
| SURFACE | | | | 12 1/4 | | 10 | | 251 | | | | | | |
| PRODUCTION | | | | 7 7/8 | | 251 | | 7,500 | | | | | | |
| Zone Statuses | | | | | | | | | | | | | | |
| Zone Name | | Status Date | | Status | | Fluid Type | | Job | | Prod Method | | | | |
| CODELL | | 12/17/1982 | | PR | | Water | | DRILLING/COMPLETION - ORIGINAL, 6/2/1982... | | Flowing | | | | |
| CODELL | | 2/1/2002 | | PR | | | | RE-FRAC, 2/1/2001 00:00 | | | | | | |
| CODELL | | 8/20/2003 | | PR | | | | TRI-FRAC, 8/7/2003 00:00 | | | | | | |
| CODELL | | 2/4/2010 | | PR | | | | | | | | | | |
| CODELL | | 1/19/2015 | | PR | | | | | | | | | | |
| Casing Strings | | | | | | | | | | | | | | |
| Csg Des | | | Run Date | | OD (in) | | Wt/Len (lb/ft) | | Grade | | Top, MD (ftKB) | | MD (ftKB) | |
| Surface | | | 6/2/1982 | | 8 5/8 | | 24.00 | | J-55 | | 10.0 | | 250.0 | |
| Production | | | 6/7/1982 | | 4 1/2 | | 11.60 | | | | 10.0 | | 7,484.0 | |
| Cement | | | | | | | | | | | | | | |
| Des | | | | | Start Date | | | Top (ftKB) | | | Btm (ftKB) | | | |
| SURFACE CASING CEMENT | | | | | 6/2/1982 00:00 | | | 10.0 | | | 250.0 | | | |
| PRODUCTION CASING CEMENT | | | | | 6/7/1982 00:00 | | | 6,039.0 | | | 7,484.0 | | | |
| Tubing Components | | | | | | | | | | | | | | |
| Item Des | | | | OD (in) | | Wt (lb/ft) | | Grade | | Jts | | Len (ft) | | |
| Tubing | | | | 2 3/8 | | 4.70 | | J-55 | | 235 | | 7,417.50 | | |
| Pump Seating Nipple | | | | 2 3/8 | | | | | | 1 | | 0.75 | | |
| Notched collar | | | | 2 3/8 | | | | | | 1 | | 0.75 | | |
| Tubing | | | | 2 3/8 | | 4.70 | | J-55 | | 241 | | 7,402.24 | | |
| Pump Seating Nipple | | | | 2 3/8 | | | | | | 1 | | 1.10 | | |
| Notched collar | | | | 2 3/8 | | | | | | 1 | | 0.40 | | |
| Perforation Data | | | | | | | | | | | | | | |
| Linked Zone | | | Bnch/Stg | | Sum of Entered Shot Total | | Top (ftKB) | | Btm (ftKB) | | Date | | | |
| CODELL, ORIGINAL HOLE | | | | | 40 | | 7,443.00 | | 7,462.00 | | 8/12/2003 | | | |
| CODELL, ORIGINAL HOLE | | | | | 54 | | 7,443.00 | | 7,462.00 | | 2/1/2001 | | | |
| CODELL, ORIGINAL HOLE | | | | | 21 | | 7,447.00 | | 7,457.00 | | 11/11/1982 | | | |
| Total (Sum) | | | | | 115 | | | | | | | | | |
| Other In Hole | | | | | | | | | | | | | | |
| Run Date | | | Des | | | | OD (in) | | Top (ftKB) | | Btm (ftKB) | | | |
| | | | | | | | | | | | | | | |
| Logs | | | | | | | | | | | | | | |
| Date | | | Type | | | | | Top, MD (ftKB) | | Btm, MD (ftKB) | | | | |
| 8/8/2003 | | | GAMMA RAY | | | | | 7,100.0 | | 7,473.0 | | | | |
| 1/27/2010 | | | GAMMA RAY | | | | | 7,100.0 | | 7,473.0 | | | | |

Well Name: LUNDVALL 03

VERTICAL - ORIGINAL HOLE, 10/3/2017 3:37:13 PM



| Stimulation Intervals | | | | |
|---------------------------|------------|--------------------------------|---------------------------|---------------------------|
| Bnch/Stg | Start Date | Primary Job Type | | |
| | 11/13/1982 | DRILLING/COMPLETION - ORIGINAL | | |
| Comment | | | | |
| | | | | |
| Volume Slurry Total (gal) | | | | |
| 160,524.01 | | | | |
| Treat Pressure Avg (psi) | | Treat Pressure Max (psi) | Slurry Rate Avg (bbl/min) | Slurry Rate Max (bbl/min) |
| | | | | |
| Bnch/Stg | Start Date | Primary Job Type | | |
| | 2/20/2001 | RE-FRAC | | |
| Comment | | | | |
| NO DATA ON REFRAC | | | | |
| Volume Slurry Total (gal) | | | | |
| 111,468.01 | | | | |
| Treat Pressure Avg (psi) | | Treat Pressure Max (psi) | Slurry Rate Avg (bbl/min) | Slurry Rate Max (bbl/min) |
| | | | 0.3 | |
| Bnch/Stg | Start Date | Primary Job Type | | |
| | 8/14/2003 | TRI-FRAC | | |
| Comment | | | | |
| | | | | |
| Volume Slurry Total (gal) | | | | |
| 130,452.00 | | | | |
| Treat Pressure Avg (psi) | | Treat Pressure Max (psi) | Slurry Rate Avg (bbl/min) | Slurry Rate Max (bbl/min) |
| 5,592.0 | | 7,100.0 | 14.2 | 14.4 |