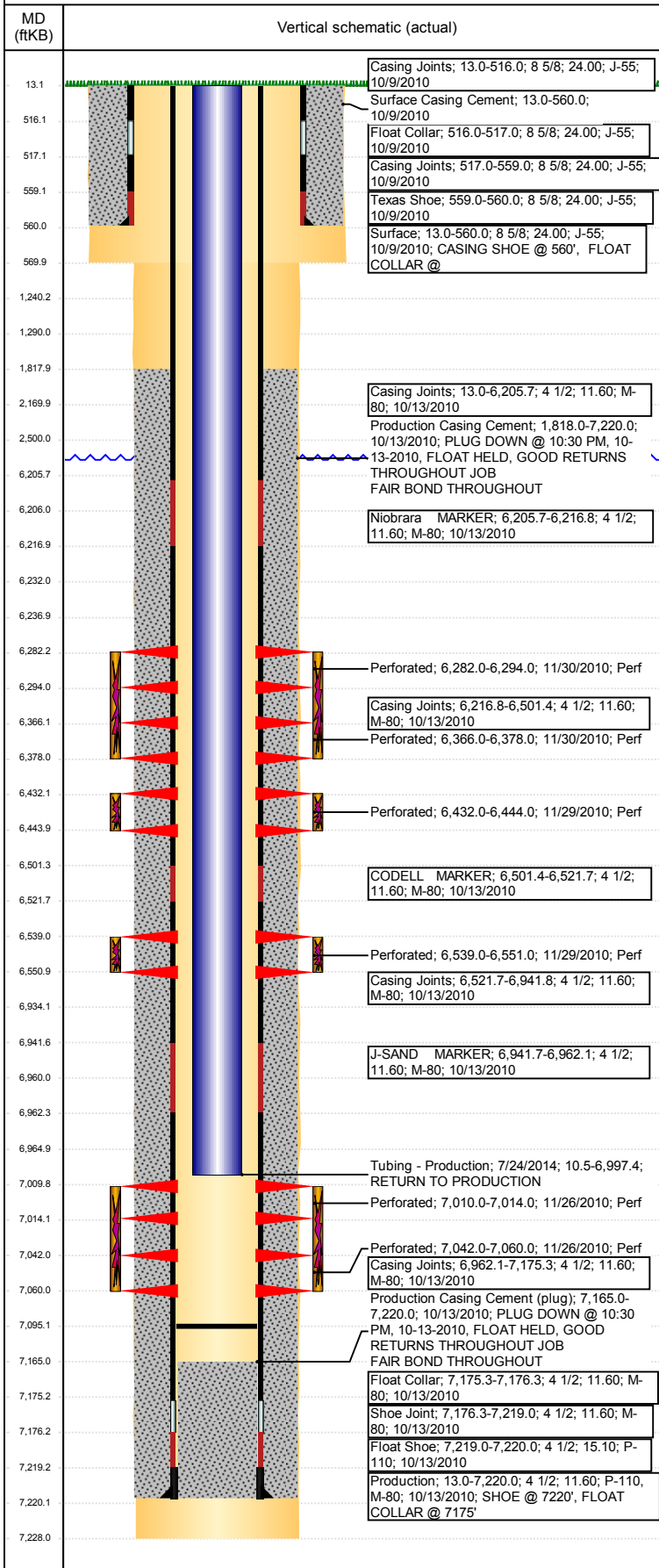


Well Name: 70 RANCH USX BB27-08

VERTICAL - ORIGINAL HOLE, 10/3/2017 8:08:07 AM



Well Header

API 05-123-30827	Business Unit DJ BASIN	District 15	Well Config VERTICAL
Original KB Elevation (ft) 4,586	KB - GL / MSL (ftKB) 13.00	Spud Date 10/9/2010	P & A Date

Comment

WBI - HORIZONTAL WELL PREP - STATE NORTH PLATTE 11-14-26HNB - AFE: 142552

Directions To Well

WCR 61 & WCR 388, EAST SOUTHEAST 3.3 MILES, NORTH 0.2 MILES, NORTHEAST 0.4 MILES, SOUTHEAST 0.5 MILES INTO LOCATION.

Congressional Location

Quarter 3 SE	Quarter 4 NE	Section 27	Township 5	TwNS Dir N	Range 63	Range E/W Dir W
-----------------	-----------------	---------------	---------------	---------------	-------------	--------------------

Bottom Hole Location

North-South Distance (ft)	From N or S Line	East-West Distance (ft)	From E or W Line
---------------------------	------------------	-------------------------	------------------

Plug Back Total Depths

Date	Depth (ftKB)	Method	Com
10/13/2010	7,175.0	CASING TALLY	2 BOTTOM PLUGS AND 1 TOP PLUG PUMPED T...
10/27/2010	7,165.0	CASED HOLE LOG	DEPTH LOGGER
1/15/2014	7,153.0	TAG	TUBING TALLY
7/23/2014	7,095.0	TAG	DRILL AND PUSH CMT & CBP TO 7095'

Wellbore Sections

Section Des	Size (in)	Act Top, MD (ftKB)	Act Btm, MD (ftKB)
SURFACE	12 1/4	13	570
PRODUCTION	7 7/8	570	7,228

Zone Statuses

Zone Name	Status Date	Status	Fluid Type	Job	Prod Method
CODELL	12/2/2010	PR		DRILLING/CO...	
NIOBRARA	12/2/2010	PR		DRILLING/CO...	
J SAND	12/2/2010	PR		DRILLING/CO...	

Casing Strings

Surface, 560.0ftKB

Casing Description	Run Date	OD (in)	Wt/Len (l...)	Grade	Top, MD (ft...)	MD (ftKB)
Surface	10/9/2010	8 5/8	24.00	J-55	13.0	560.0

Production, 7,220.0ftKB

Casing Description	Run Date	OD (in)	Wt/Len (l...)	Grade	Top, MD (ft...)	MD (ftKB)
Production	10/13/2010	4 1/2	11.60	M-80	13.0	7,220.0

Cement

Description	Top Depth (ftKB)	Bottom Depth (ftKB)
Surface Casing Cement	13.0	560.0
Production Casing Cement	1,818.0	7,220.0
PA Plug	6,934.0	6,960.0
PA Plug	6,206.0	6,232.0
PA Plug	2,170.0	2,500.0
PA Plug	1,240.0	1,290.0
PA Plug	13.1	1,240.0

Tubing Strings

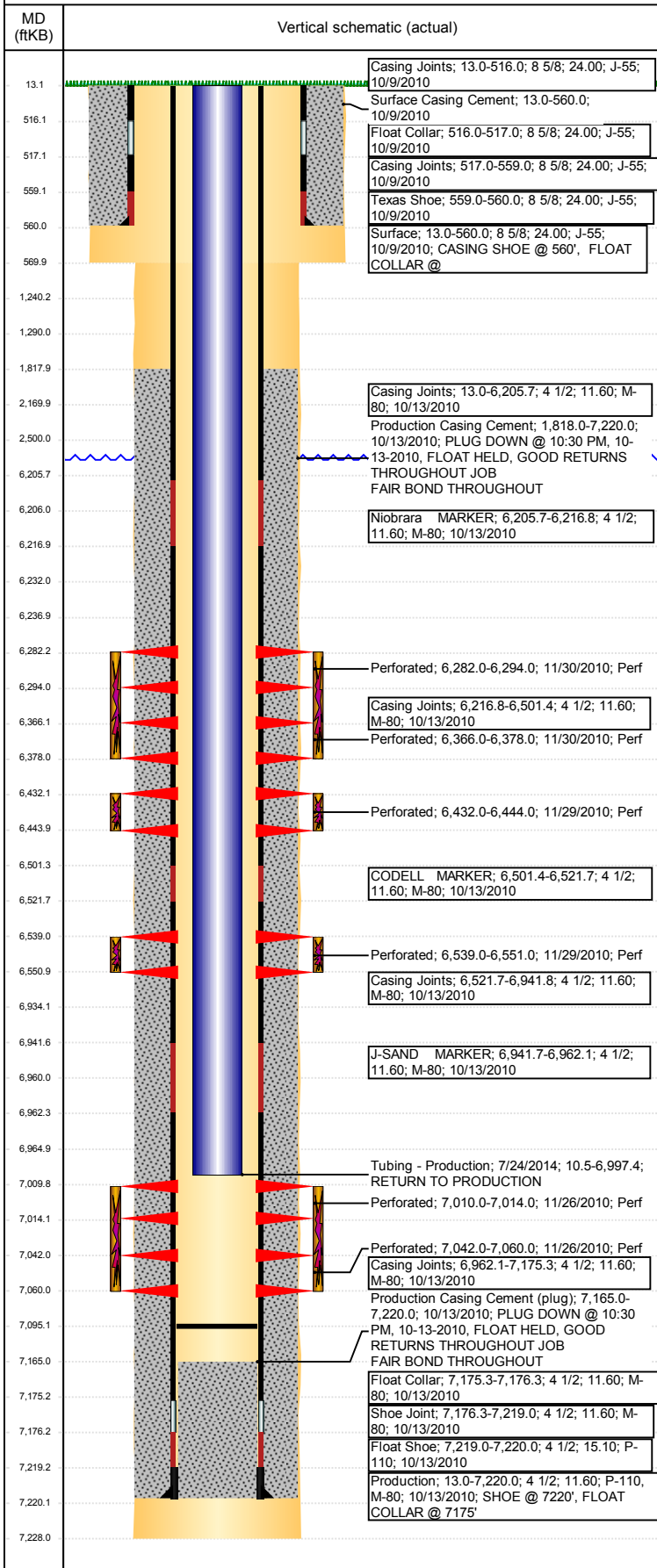
Tubing Description	Run Date	String...	ID (in)	Wt (lb/ft)	Grade	Len (ft)	Set De...
Tubing - Production	12/16/2010	2 3/8	2.00	4.70	J-55	6,983.54	6,993.8
Tubing - Production	10/4/2012	2 3/8	2.00	4.70	J-55	6,979.76	6,991.9
Tubing - Production	1/15/2014	2 3/8	2.00	4.70	J-55	5,910.26	5,909.0
Tubing - Production	7/24/2014	2 3/8	2.00	4.70	J-55	6,986.90	6,996.6

Other In Hole

Run Date	Des	OD (in)	Top (ftKB)	Btm (ftKB)
9/22/2017	Cast Iron Bridge Plug	4	6,960.0	6,965.0
9/22/2017	Cast Iron Bridge Plug	4	6,232.0	6,237.0

Well Name: 70 RANCH USX BB27-08

VERTICAL - ORIGINAL HOLE, 10/3/2017 8:08:08 AM



Logs			
Date	Type	Top, MD (ftKB)	Btm, MD (ftKB)
10/13/2010	SPECTRAL DENSITY/Pe/DSN NEUTRON/SP/ARRAY COMPENSATED TRUE RESISTIVITY	560.0	7,219.0
10/13/2010	SPECTRAL GAMMA RAY	560.0	7,219.0
10/27/2010	CBL/CCL/GR/VDL	1,520.0	7,158.0

Perforation Data					
Linked Zone	Bnch/St g	Sum of Entered Shot Total	Top (ftKB)	Btm (ftKB)	Date
NIOBRARA, ORIGINAL HOLE	A	24	6,282.00	6,294.00	11/30/2010
NIOBRARA, ORIGINAL HOLE	B	24	6,366.00	6,378.00	11/30/2010
NIOBRARA, ORIGINAL HOLE	C	24	6,432.00	6,444.00	11/29/2010
CODELL, ORIGINAL HOLE		48	6,539.00	6,551.00	11/29/2010
J SAND, ORIGINAL HOLE	01	16	7,010.00	7,014.00	11/26/2010
J SAND, ORIGINAL HOLE	02	72	7,042.00	7,060.00	11/26/2010

Total (Sum) 208

Stimulation Intervals

Start Date 11/29/2010	Primary Job Type DRILLING/COMPLETION - ORIGINAL	
Technical Result Success	Tech Result Details According to Plan	Tech Result Note
Comment (J Sand ND) GOOD JOB. AVG VISC = 18.3 CP, AVG TEMP = 78.5 F, AVG PH = 10.42, POST-JOB 5 MINUTE = 1285 PSI		
Start Date 11/29/2010	Primary Job Type DRILLING/COMPLETION - ORIGINAL	
Technical Result Success	Tech Result Details According to Plan	Tech Result Note
Comment (CODELL ND) PUMPED 20 BBLS MORE 15% HCL THAN DESIGNED - BJ ERROR. AVG VISC = 22.3 CP, AVG TEMP = 75.9 F, AVG PH = 10.31, POST-JOB 5 MINUTE = 2951 PSI.		
Start Date 11/30/2010	Primary Job Type DRILLING/COMPLETION - ORIGINAL	
Technical Result Success	Tech Result Details According to Plan	Tech Result Note
Comment (NIO C ND) GOOD JOB. TIGHT ZONE FOR SETTING PLUG BETWEEN C AND B BENCHES - OVERFLUSHED 20 BBLS PRIOR TO ACID TO ENSURE THAT SAND WAS NOT IN THE PIPE. AVG VISC = 17.5 CP, AVG TEMP = 50.7, AVG PH = 10.3, POST-JOB 5 MINUTE = 3334 PSI		
Start Date 11/30/2010	Primary Job Type DRILLING/COMPLETION - ORIGINAL	
Technical Result Success	Tech Result Details According to Plan	Tech Result Note
Comment (NIO A & B ND) GOOD JOB. AVG VISC = 19.0 CP, AVG TEMP = 64.8 F, AVG PH = 10.33, POST-JOB 5 MINUTE = 3333 PSI.		