



## SECTION DETAILS

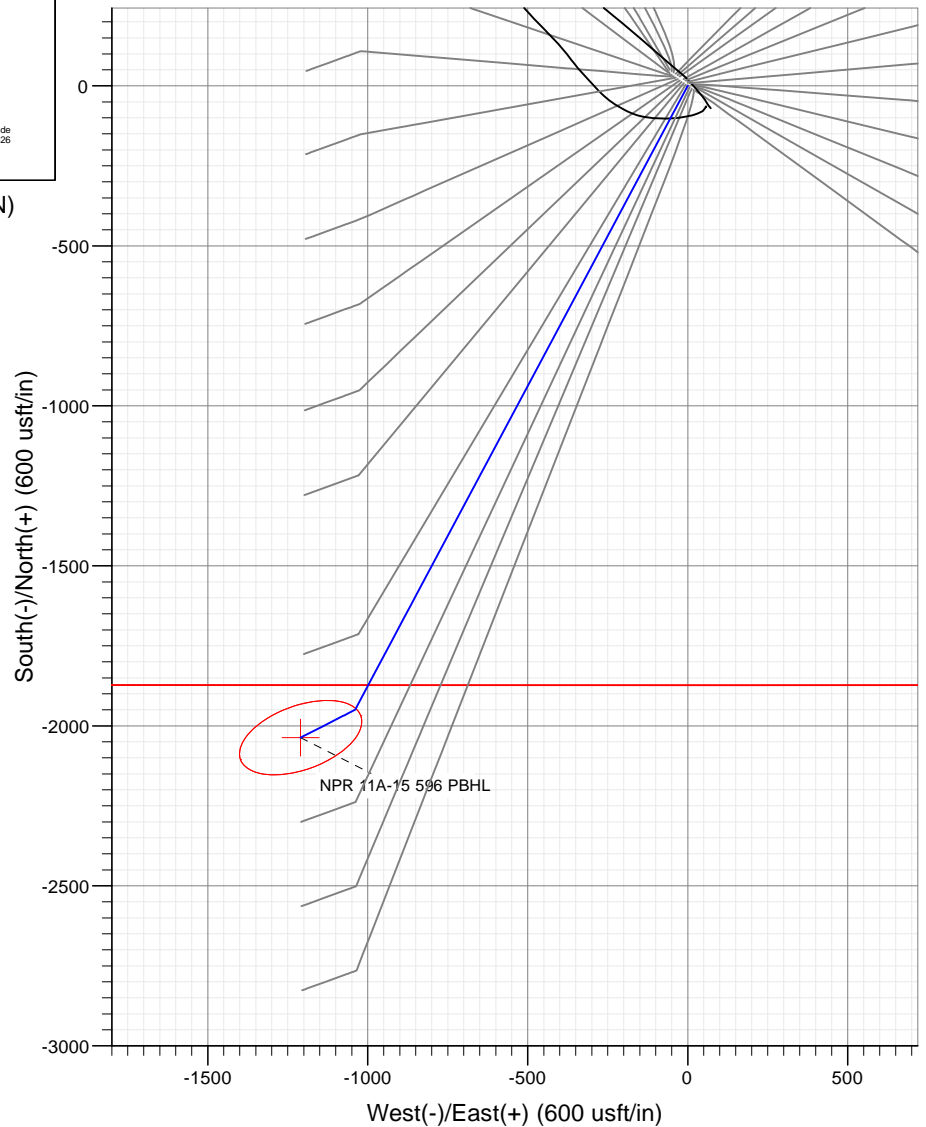
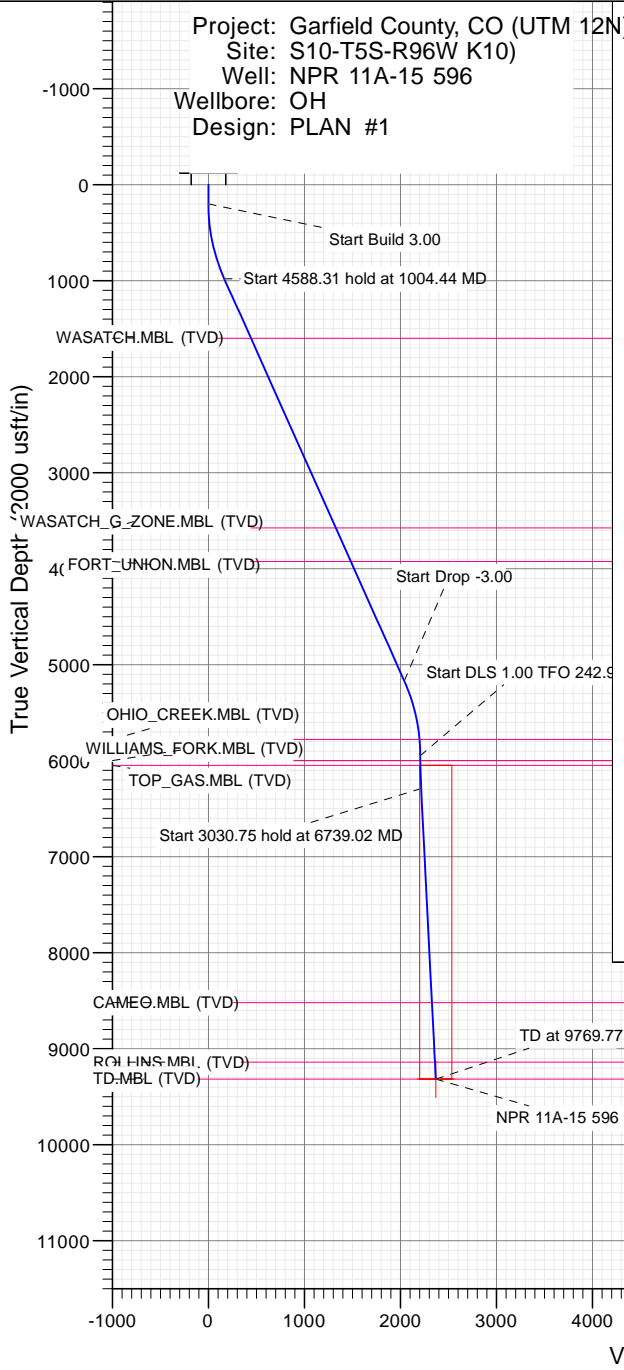
Sec	MD	Inc	Azi	TVD	+N/-S	+E/-W	Dleg	TFace	VSec	Target
1	0.00	0.00	0.00	0.00	0.00	0.00	0.00	0.00	0.00	
2	200.00	0.00	0.00	200.00	0.00	0.00	0.00	0.00	0.00	
3	1004.44	24.13	208.07	980.86	-147.29	-78.54	3.00	208.07	166.75	
4	5592.74	24.13	208.07	5168.14	-1802.64	-961.19	0.00	0.00	2040.72	
5	6397.18	0.00	0.00	5949.00	-1949.93	-1039.73	3.00	180.00	2207.46	
6	6739.02	3.42	242.93	6290.64	-1954.57	-1048.81	1.00	242.93	2216.09	
7	9769.77	3.42	242.93	9316.00	-2036.80	-1209.73	0.00	0.00	2368.97	NPR 11A-15 596 PBHL

PLAN #1  
NPR 11A-15 596  
30' KS @ 6739.02ft  
Ground Level @ 6709.00  
NAD 1983 - Western US  
Well NPR 11A-15 596 - Slot NPR 11A-15 596, True North

Type	Target	Azimuth	Origin	Type	N/S	E/W	From
TD	No Target (Freehand)	210.71	Slot		0.00	0.00	TVD
Name							
NPR 11A-15 596 PBHL							

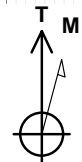
	TVD	+N/-S	+E/-W	Latitude	Longitude
	9316.00	-2036.80	-1209.73	39.621904	-108.159526

Project: Garfield County, CO (UTM 12N)  
Site: S10-T5S-R96W K10  
Well: NPR 11A-15 596  
Wellbore: OH  
Design: PLAN #1



## FORMATION TOP DETAILS

TVDPath	MDPath	Formation
1600.00	1682.87	WASATCH.MBL (TVD)
3575.00	3847.02	WASATCH_G_ZONE.MBL (TVD)
3925.00	4230.54	FORT UNION.MBL (TVD)
5778.00	6225.95	OHIO_CREEK.MBL (TVD)
5999.00	6447.18	WILLIAMS_FORK.MBL (TVD)
6049.00	6497.18	TOP_GAS.MBL (TVD)
8521.00	8973.36	CAMEO.MBL (TVD)
9141.00	9594.46	ROLLINS.MBL (TVD)
9316.00	9769.77	TD.MBL (TVD)



Azimuths to True North  
Magnetic North: 9.72°

Magnetic Field  
Strength: 51532.7nT  
Dip Angle: 65.93°  
Date: 9/12/2017  
Model: HDGM

Vertical Section at 210.71° (2000 usft/in)

WELL DETAILS: NPR 11A-15 596

6709.00  
+N/-S 0.00 +E/-W 0.00 Northing 14403096.20 Easting 2441491.30 Latitude 39.627494 Longitude -108.155233 NPR 11A-15 596

CATHEDRAL



# Cathedral Energy Services

## Planning Report

<b>Database:</b>	USA EDM 5000 Multi Users DB	<b>Local Co-ordinate Reference:</b>	Well NPR 11A-15 596 - Slot NPR 11A-15 596
<b>Company:</b>	Caerus Oil & Gas	<b>TVD Reference:</b>	30' KB @ 6739.00usft
<b>Project:</b>	Garfield County, CO (UTM 12N)	<b>MD Reference:</b>	30' KB @ 6739.00usft
<b>Site:</b>	S10-T5S-R96W K10)	<b>North Reference:</b>	True
<b>Well:</b>	NPR 11A-15 596	<b>Survey Calculation Method:</b>	Minimum Curvature
<b>Wellbore:</b>	OH		
<b>Design:</b>	PLAN #1		

<b>Project</b>	Garfield County, CO (UTM 12N)		
<b>Map System:</b>	Universal Transverse Mercator (US Survey Feet)	<b>System Datum:</b>	Mean Sea Level
<b>Geo Datum:</b>	NAD 1927 - Western US		
<b>Map Zone:</b>	Zone 12N (114 W to 108 W)		

Site		S10-T5S-R96W K10)			
Site Position:		Northing:	14,403,136.70 usft	Latitude:	39.627609
From:	Map	Easting:	2,441,445.90 usft	Longitude:	-108.155390
Position Uncertainty:	0.00 usft	Slot Radius:	13-3/16"	Grid Convergence:	1.82 °

Well	NPR 11A-15 596 - Slot NPR 11A-15 596					
Well Position	+N/-S	0.00 usft	Northing:	14,403,096.20 usft	Latitude:	39.627494
	+E/-W	0.00 usft	Easting:	2,441,491.30 usft	Longitude:	-108.155233
Position Uncertainty		0.00 usft	Wellhead Elevation:	usft	Ground Level:	6,709.00 usft

<b>Wellbore</b>	OH				
<b>Magnetics</b>	<b>Model Name</b>	<b>Sample Date</b>	<b>Declination</b>	<b>Dip Angle</b>	<b>Field Strength</b>
			(°)	(°)	(nT)
	HDGM	9/12/2017	9.72	65.93	51,532.70000000

<b>Design</b>	PLAN #1			
<b>Audit Notes:</b>				
<b>Version:</b>	<b>Phase:</b>	PLAN	<b>Tie On Depth:</b>	0.00
<b>Vertical Section:</b>	<b>Depth From (TVD)</b>	<b>+N/-S</b>	<b>+E/-W</b>	<b>Direction</b>
	(usft)	(usft)	(usft)	(°)
	0.00	0.00	0.00	210.71

<b>Plan Sections</b>										
Measured Depth (usft)	Inclination (°)	Azimuth (°)	Vertical Depth (usft)	+N/-S (usft)	+E/-W (usft)	Dogleg Rate (°/100usft)	Build Rate (°/100usft)	Turn Rate (°/100usft)	TFO (°)	Target
0.00	0.00	0.00	0.00	0.00	0.00	0.00	0.00	0.00	0.00	
200.00	0.00	0.00	200.00	0.00	0.00	0.00	0.00	0.00	0.00	
1,004.44	24.13	208.07	980.86	-147.29	-78.54	3.00	3.00	0.00	208.07	
5,592.74	24.13	208.07	5,168.14	-1,802.64	-961.19	0.00	0.00	0.00	0.00	
6,397.18	0.00	0.00	5,949.00	-1,949.93	-1,039.73	3.00	-3.00	0.00	180.00	
6,739.02	3.42	242.93	6,290.64	-1,954.57	-1,048.81	1.00	1.00	-34.25	242.93	
9,769.77	3.42	242.93	9,316.00	-2,036.80	-1,209.73	0.00	0.00	0.00	0.00	NPR 11A-15 596 PBH

# Cathedral Energy Services

## Planning Report

<b>Database:</b>	USA EDM 5000 Multi Users DB	<b>Local Co-ordinate Reference:</b>	Well NPR 11A-15 596 - Slot NPR 11A-15 596
<b>Company:</b>	Caerus Oil & Gas	<b>TVD Reference:</b>	30' KB @ 6739.00usft
<b>Project:</b>	Garfield County, CO (UTM 12N)	<b>MD Reference:</b>	30' KB @ 6739.00usft
<b>Site:</b>	S10-T5S-R96W K10)	<b>North Reference:</b>	True
<b>Well:</b>	NPR 11A-15 596	<b>Survey Calculation Method:</b>	Minimum Curvature
<b>Wellbore:</b>	OH		
<b>Design:</b>	PLAN #1		

Planned Survey									
Measured Depth (usft)	Inclination (°)	Azimuth (°)	Vertical Depth (usft)	+N/-S (usft)	+E/-W (usft)	Vertical Section (usft)	Dogleg Rate (°/100usft)	Build Rate (°/100u)	Comments / Formations
0.00	0.00	0.00	0.00	0.00	0.00	0.00	0.00	0.00	
100.00	0.00	0.00	100.00	0.00	0.00	0.00	0.00	0.00	
200.00	0.00	0.00	200.00	0.00	0.00	0.00	0.00	0.00	
300.00	3.00	208.07	299.95	-2.31	-1.23	2.61	3.00	3.00	
400.00	6.00	208.07	399.63	-9.23	-4.92	10.45	3.00	3.00	
500.00	9.00	208.07	498.77	-20.75	-11.06	23.49	3.00	3.00	
600.00	12.00	208.07	597.08	-36.83	-19.64	41.69	3.00	3.00	
700.00	15.00	208.07	694.31	-57.42	-30.62	65.01	3.00	3.00	
800.00	18.00	208.07	790.18	-82.48	-43.98	93.38	3.00	3.00	
900.00	21.00	208.07	884.43	-111.93	-59.68	126.72	3.00	3.00	
1,000.00	24.00	208.07	976.81	-145.70	-77.69	164.94	3.00	3.00	
1,004.44	24.13	208.07	980.86	-147.29	-78.54	166.75	3.00	3.00	
1,100.00	24.13	208.07	1,068.07	-181.77	-96.92	205.78	0.00	0.00	
1,200.00	24.13	208.07	1,159.33	-217.85	-116.16	246.62	0.00	0.00	
1,300.00	24.13	208.07	1,250.59	-253.93	-135.40	287.46	0.00	0.00	
1,400.00	24.13	208.07	1,341.85	-290.00	-154.63	328.31	0.00	0.00	
1,500.00	24.13	208.07	1,433.11	-326.08	-173.87	369.15	0.00	0.00	
1,600.00	24.13	208.07	1,524.37	-362.16	-193.11	409.99	0.00	0.00	
1,682.87	24.13	208.07	1,600.00	-392.06	-209.05	443.84	0.00	0.00	WASATCH.MBL (TVD)
1,700.00	24.13	208.07	1,615.63	-398.24	-212.34	450.83	0.00	0.00	
1,800.00	24.13	208.07	1,706.89	-434.31	-231.58	491.67	0.00	0.00	
1,900.00	24.13	208.07	1,798.15	-470.39	-250.82	532.52	0.00	0.00	
2,000.00	24.13	208.07	1,889.41	-506.47	-270.06	573.36	0.00	0.00	
2,100.00	24.13	208.07	1,980.67	-542.55	-289.29	614.20	0.00	0.00	
2,200.00	24.13	208.07	2,071.93	-578.62	-308.53	655.04	0.00	0.00	
2,300.00	24.13	208.07	2,163.19	-614.70	-327.77	695.89	0.00	0.00	
2,400.00	24.13	208.07	2,254.45	-650.78	-347.00	736.73	0.00	0.00	
2,500.00	24.13	208.07	2,345.71	-686.85	-366.24	777.57	0.00	0.00	
2,600.00	24.13	208.07	2,436.97	-722.93	-385.48	818.41	0.00	0.00	
2,700.00	24.13	208.07	2,528.23	-759.01	-404.71	859.26	0.00	0.00	
2,800.00	24.13	208.07	2,619.49	-795.09	-423.95	900.10	0.00	0.00	
2,900.00	24.13	208.07	2,710.75	-831.16	-443.19	940.94	0.00	0.00	
3,000.00	24.13	208.07	2,802.01	-867.24	-462.43	981.78	0.00	0.00	
3,100.00	24.13	208.07	2,893.27	-903.32	-481.66	1,022.62	0.00	0.00	
3,200.00	24.13	208.07	2,984.53	-939.40	-500.90	1,063.47	0.00	0.00	
3,300.00	24.13	208.07	3,075.79	-975.47	-520.14	1,104.31	0.00	0.00	
3,400.00	24.13	208.07	3,167.05	-1,011.55	-539.37	1,145.15	0.00	0.00	
3,500.00	24.13	208.07	3,258.31	-1,047.63	-558.61	1,185.99	0.00	0.00	
3,600.00	24.13	208.07	3,349.57	-1,083.71	-577.85	1,226.84	0.00	0.00	
3,700.00	24.13	208.07	3,440.83	-1,119.78	-597.08	1,267.68	0.00	0.00	
3,800.00	24.13	208.07	3,532.09	-1,155.86	-616.32	1,308.52	0.00	0.00	
3,847.02	24.13	208.07	3,575.00	-1,172.83	-625.37	1,327.73	0.00	0.00	WASATCH_G_ZONE.MBL (TVD)
3,900.00	24.13	208.07	3,623.35	-1,191.94	-635.56	1,349.36	0.00	0.00	
4,000.00	24.13	208.07	3,714.61	-1,228.02	-654.80	1,390.21	0.00	0.00	
4,100.00	24.13	208.07	3,805.87	-1,264.09	-674.03	1,431.05	0.00	0.00	
4,200.00	24.13	208.07	3,897.13	-1,300.17	-693.27	1,471.89	0.00	0.00	
4,230.54	24.13	208.07	3,925.00	-1,311.19	-699.14	1,484.36	0.00	0.00	FORT_UNION.MBL (TVD)
4,300.00	24.13	208.07	3,988.39	-1,336.25	-712.51	1,512.73	0.00	0.00	
4,400.00	24.13	208.07	4,079.65	-1,372.33	-731.74	1,553.57	0.00	0.00	
4,500.00	24.13	208.07	4,170.91	-1,408.40	-750.98	1,594.42	0.00	0.00	
4,600.00	24.13	208.07	4,262.17	-1,444.48	-770.22	1,635.26	0.00	0.00	
4,700.00	24.13	208.07	4,353.43	-1,480.56	-789.45	1,676.10	0.00	0.00	

# Cathedral Energy Services

## Planning Report

<b>Database:</b>	USA EDM 5000 Multi Users DB	<b>Local Co-ordinate Reference:</b>	Well NPR 11A-15 596 - Slot NPR 11A-15 596
<b>Company:</b>	Caerus Oil & Gas	<b>TVD Reference:</b>	30' KB @ 6739.00usft
<b>Project:</b>	Garfield County, CO (UTM 12N)	<b>MD Reference:</b>	30' KB @ 6739.00usft
<b>Site:</b>	S10-T5S-R96W K10)	<b>North Reference:</b>	True
<b>Well:</b>	NPR 11A-15 596	<b>Survey Calculation Method:</b>	Minimum Curvature
<b>Wellbore:</b>	OH		
<b>Design:</b>	PLAN #1		

Planned Survey									
Measured Depth (usft)	Inclination (°)	Azimuth (°)	Vertical Depth (usft)	+N/-S (usft)	+E/-W (usft)	Vertical Section (usft)	Dogleg Rate (°/100usft)	Build Rate (°/100u)	Comments / Formations
4,800.00	24.13	208.07	4,444.69	-1,516.64	-808.69	1,716.94	0.00	0.00	
4,900.00	24.13	208.07	4,535.95	-1,552.71	-827.93	1,757.79	0.00	0.00	
5,000.00	24.13	208.07	4,627.21	-1,588.79	-847.17	1,798.63	0.00	0.00	
5,100.00	24.13	208.07	4,718.47	-1,624.87	-866.40	1,839.47	0.00	0.00	
5,200.00	24.13	208.07	4,809.73	-1,660.95	-885.64	1,880.31	0.00	0.00	
5,300.00	24.13	208.07	4,900.98	-1,697.02	-904.88	1,921.16	0.00	0.00	
5,400.00	24.13	208.07	4,992.24	-1,733.10	-924.11	1,962.00	0.00	0.00	
5,500.00	24.13	208.07	5,083.50	-1,769.18	-943.35	2,002.84	0.00	0.00	
5,592.74	24.13	208.07	5,168.14	-1,802.64	-961.19	2,040.72	0.00	0.00	
5,600.00	23.92	208.07	5,174.77	-1,805.24	-962.58	2,043.67	3.00	-3.00	
5,700.00	20.92	208.07	5,267.20	-1,838.89	-980.52	2,081.76	3.00	-3.00	
5,800.00	17.92	208.07	5,361.51	-1,868.22	-996.16	2,114.96	3.00	-3.00	
5,900.00	14.92	208.07	5,457.42	-1,893.15	-1,009.45	2,143.19	3.00	-3.00	
6,000.00	11.92	208.07	5,554.68	-1,913.62	-1,020.37	2,166.36	3.00	-3.00	
6,100.00	8.92	208.07	5,653.02	-1,929.57	-1,028.87	2,184.42	3.00	-3.00	
6,200.00	5.92	208.07	5,752.17	-1,940.96	-1,034.95	2,197.31	3.00	-3.00	
6,225.95	5.14	208.07	5,778.00	-1,943.16	-1,036.12	2,199.80	3.00	-3.00	OHIO_CREEK.MBL (TVD)
6,300.00	2.92	208.07	5,851.87	-1,947.75	-1,038.57	2,205.00	3.00	-3.00	
6,397.18	0.00	0.00	5,949.00	-1,949.93	-1,039.73	2,207.46	3.00	-3.00	
6,400.00	0.03	242.93	5,951.82	-1,949.93	-1,039.73	2,207.47	1.00	1.00	
6,447.18	0.50	242.93	5,999.00	-1,950.03	-1,039.92	2,207.65	1.00	1.00	WILLIAMS_FORK.MBL (TVD)
6,497.18	1.00	242.93	6,049.00	-1,950.33	-1,040.51	2,208.20	1.00	1.00	TOP_GAS.MBL (TVD)
6,500.00	1.03	242.93	6,051.82	-1,950.35	-1,040.55	2,208.25	1.00	1.00	
6,600.00	2.03	242.93	6,151.78	-1,951.56	-1,042.93	2,210.50	1.00	1.00	
6,700.00	3.03	242.93	6,251.68	-1,953.57	-1,046.85	2,214.23	1.00	1.00	
6,739.02	3.42	242.93	6,290.64	-1,954.57	-1,048.81	2,216.09	1.00	1.00	
6,800.00	3.42	242.93	6,351.51	-1,956.22	-1,052.05	2,219.17	0.00	0.00	
6,900.00	3.42	242.93	6,451.33	-1,958.94	-1,057.36	2,224.21	0.00	0.00	
7,000.00	3.42	242.93	6,551.16	-1,961.65	-1,062.67	2,229.25	0.00	0.00	
7,100.00	3.42	242.93	6,650.98	-1,964.36	-1,067.97	2,234.30	0.00	0.00	
7,200.00	3.42	242.93	6,750.80	-1,967.08	-1,073.28	2,239.34	0.00	0.00	
7,300.00	3.42	242.93	6,850.62	-1,969.79	-1,078.59	2,244.39	0.00	0.00	
7,400.00	3.42	242.93	6,950.44	-1,972.50	-1,083.90	2,249.43	0.00	0.00	
7,500.00	3.42	242.93	7,050.27	-1,975.22	-1,089.21	2,254.47	0.00	0.00	
7,600.00	3.42	242.93	7,150.09	-1,977.93	-1,094.52	2,259.52	0.00	0.00	
7,700.00	3.42	242.93	7,249.91	-1,980.64	-1,099.83	2,264.56	0.00	0.00	
7,800.00	3.42	242.93	7,349.73	-1,983.36	-1,105.14	2,269.61	0.00	0.00	
7,900.00	3.42	242.93	7,449.55	-1,986.07	-1,110.45	2,274.65	0.00	0.00	
8,000.00	3.42	242.93	7,549.38	-1,988.78	-1,115.76	2,279.70	0.00	0.00	
8,100.00	3.42	242.93	7,649.20	-1,991.49	-1,121.07	2,284.74	0.00	0.00	
8,200.00	3.42	242.93	7,749.02	-1,994.21	-1,126.38	2,289.78	0.00	0.00	
8,300.00	3.42	242.93	7,848.84	-1,996.92	-1,131.69	2,294.83	0.00	0.00	
8,400.00	3.42	242.93	7,948.66	-1,999.63	-1,137.00	2,299.87	0.00	0.00	
8,500.00	3.42	242.93	8,048.49	-2,002.35	-1,142.31	2,304.92	0.00	0.00	
8,600.00	3.42	242.93	8,148.31	-2,005.06	-1,147.62	2,309.96	0.00	0.00	
8,700.00	3.42	242.93	8,248.13	-2,007.77	-1,152.93	2,315.00	0.00	0.00	
8,800.00	3.42	242.93	8,347.95	-2,010.49	-1,158.24	2,320.05	0.00	0.00	
8,900.00	3.42	242.93	8,447.78	-2,013.20	-1,163.55	2,325.09	0.00	0.00	
8,973.36	3.42	242.93	8,521.00	-2,015.19	-1,167.44	2,328.79	0.00	0.00	CAMEO.MBL (TVD)
9,000.00	3.42	242.93	8,547.60	-2,015.91	-1,168.86	2,330.14	0.00	0.00	
9,100.00	3.42	242.93	8,647.42	-2,018.63	-1,174.17	2,335.18	0.00	0.00	
9,200.00	3.42	242.93	8,747.24	-2,021.34	-1,179.48	2,340.23	0.00	0.00	

# Cathedral Energy Services

## Planning Report

<b>Database:</b>	USA EDM 5000 Multi Users DB	<b>Local Co-ordinate Reference:</b>	Well NPR 11A-15 596 - Slot NPR 11A-15 596
<b>Company:</b>	Caerus Oil & Gas	<b>TVD Reference:</b>	30' KB @ 6739.00usft
<b>Project:</b>	Garfield County, CO (UTM 12N)	<b>MD Reference:</b>	30' KB @ 6739.00usft
<b>Site:</b>	S10-T5S-R96W K10)	<b>North Reference:</b>	True
<b>Well:</b>	NPR 11A-15 596	<b>Survey Calculation Method:</b>	Minimum Curvature
<b>Wellbore:</b>	OH		
<b>Design:</b>	PLAN #1		

Planned Survey									
Measured Depth (usft)	Inclination (°)	Azimuth (°)	Vertical Depth (usft)	+N/-S (usft)	+E/-W (usft)	Vertical Section (usft)	Dogleg Rate (°/100usft)	Build Rate (°/100u)	Comments / Formations
9,300.00	3.42	242.93	8,847.06	-2,024.05	-1,184.79	2,345.27	0.00	0.00	
9,400.00	3.42	242.93	8,946.89	-2,026.77	-1,190.10	2,350.31	0.00	0.00	
9,500.00	3.42	242.93	9,046.71	-2,029.48	-1,195.41	2,355.36	0.00	0.00	
9,594.46	3.42	242.93	9,141.00	-2,032.04	-1,200.42	2,360.12	0.00	0.00	ROLLINS.MBL (TVD)
9,600.00	3.42	242.93	9,146.53	-2,032.19	-1,200.72	2,360.40	0.00	0.00	
9,700.00	3.42	242.93	9,246.35	-2,034.91	-1,206.03	2,365.45	0.00	0.00	
9,769.77	3.42	242.93	9,316.00	-2,036.80	-1,209.73	2,368.97	0.00	0.00	TD.MBL (TVD)

Targets									
Target Name	Dip Angle (°)	Dip Dir. (°)	TVD (usft)	+N/-S (usft)	+E/-W (usft)	Northing (usft)	Easting (usft)	Latitude	Longitude
- hit/miss target									
- Shape									
NPR 11A-15 596 PBHL	0.00	0.00	9,316.00	-2,036.80	-1,209.73	14,401,022.10	2,440,346.70	39.621904	-108.159526
- plan hits target center									
- Ellipse (radii L200.00 W100.00 on 250.00 azi)									

Formations						
Measured Depth (usft)	Vertical Depth (usft)	Name	Lithology	Dip (°)	Dip Direction (°)	
1,682.87	1,600.00	WASATCH.MBL (TVD)				
3,847.02	3,575.00	WASATCH_G_ZONE.MBL (TVD)				
4,230.54	3,925.00	FORT_UNION.MBL (TVD)				
6,225.95	5,778.00	OHIO_CREEK.MBL (TVD)				
6,447.18	5,999.00	WILLIAMS_FORK.MBL (TVD)				
6,497.18	6,049.00	TOP_GAS.MBL (TVD)				
8,973.36	8,521.00	CAMEO.MBL (TVD)				
9,594.46	9,141.00	ROLLINS.MBL (TVD)				
9,769.77	9,316.00	TD.MBL (TVD)				