

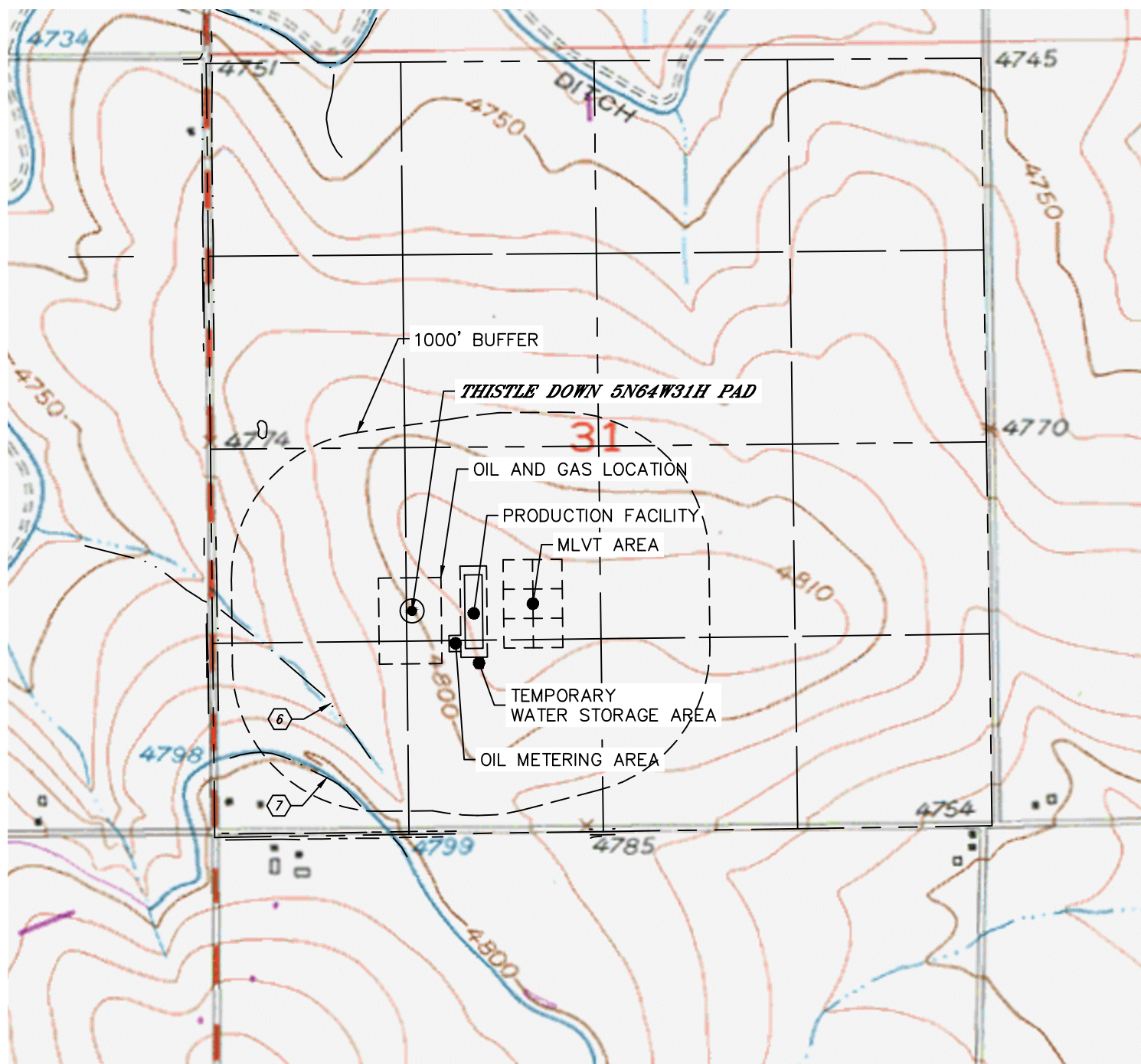


Lat40°, Inc. 6250 W. 10th Street, Unit 2, Greeley, CO 970-515-5294

# HYDROLOGY MAP

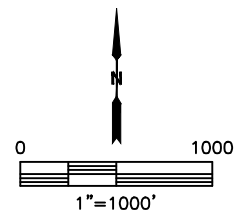
## THISTLE DOWN 5N64W31H PAD

SECTION: 31  
TOWNSHIP: 5N  
RANGE: 64W  
6TH. P.M.  
WELD COUNTY, CO



DISTANCES MEASURED FROM THE EDGE OF THE OIL AND GAS LOCATION.

- ⑥ DRAINAGE 430' SW
- ⑦ DITCH 850' SW



NEAREST DOWN GRADIENT SURFACE WATER: DRAINAGE 430' SW

DATE: 5/26/2017  
PROJECT#: 2016074