**LEGEND**

- ◆ ~ FOUND ORIGINAL STONE
- ~ FOUND GLO BRASS CAP ON STEEL POST
- ⊕ ~ FOUND REBAR AND CAP BY LS15710
- ~ FOUND No.6 REBAR WITH A 2 1/2" ALUMINUM CAP, LS24963
- ~ WELL HEAD
- (M) ~ MEASURED IN FIELD
- L ~ 90° SYMBOL
- WC ~ WITNESS CORNER

BASIS OF BEARING:

THE LINE FROM THE SE CORNER TO THE E 1/4 CORNER OF SECTION 7, TOWNSHIP 12 SOUTH, RANGE 89 WEST, 6TH P.M., WAS ASSUMED TO BEAR N. 0°05'36" W. AS MONUMENTED AND SHOWN HEREON.

CERTIFICATE OF SURVEY:

I, David G. Nicewicz, a Registered Land Surveyor in the State of Colorado, do hereby certify that the survey represented by this plat was made under my direction and supervision, and that this plat accurately represents this survey.

David G. Nicewicz P.L.S. No. 24963
(for and on behalf of AECOM)

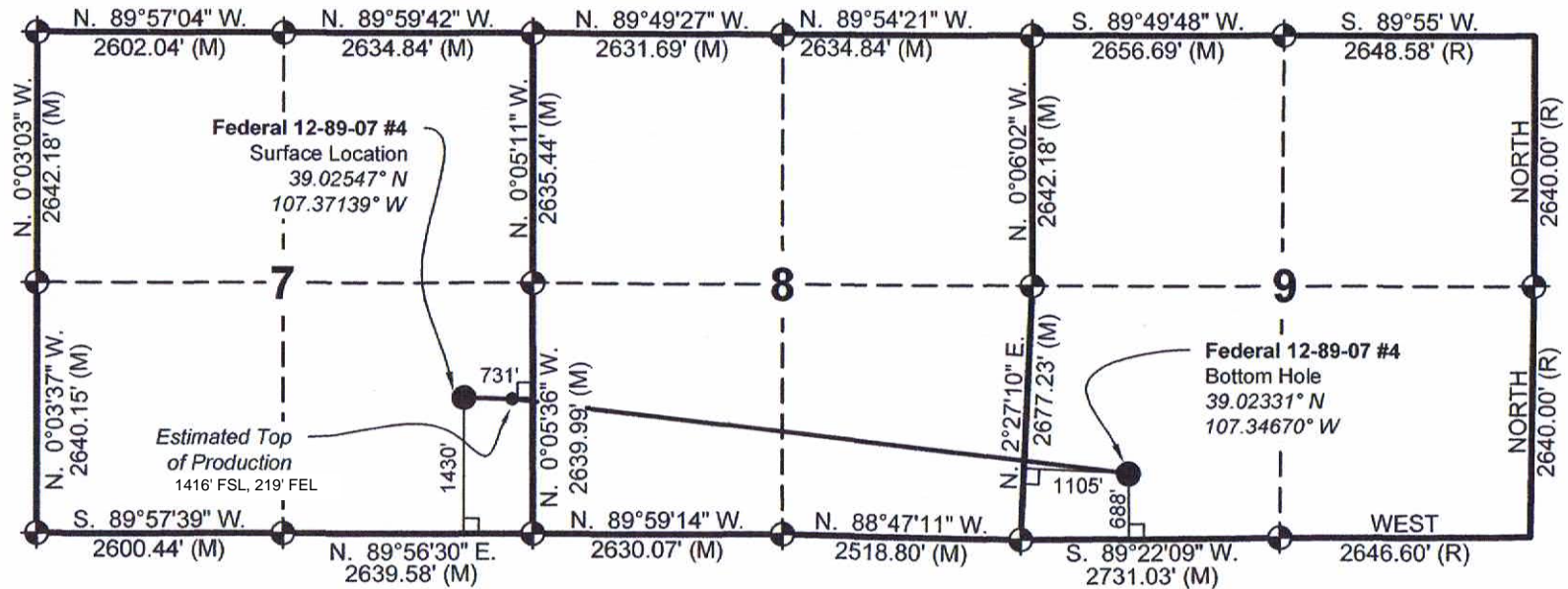
**GAS WELL LOCATION PLAT**

FEDERAL 12-89-07 #4 SURFACE LOCATION

Located in the SE 1/4 of Section 7,
Township 12 South, Range 89 West, 6th P.M.,
Gunnison County, Colorado

SURVEYED BY: DGN	DWG DATE: 09/30/15	AECOM David G. Nicewicz, PLS 804 Colorado Ave, Suite 201 Glenwood Springs Co 81610 cell: (720) 456-1104 email: david.nicewicz@aecom.com
DRAFTED BY: MLD	SCALE: 1" = 1000'	
JOB NO.: 22244264.70700		SHEET NO. 1 of 2

AECOM OF GLENWOOD SPRINGS COLORADO, has in accordance with a request from ERIC SANFORD, for SG INTERESTS I, LTD, determined the location of FEDERAL 12-89-07 #4 SURFACE LOCATION to be 1430 FSL & 731 FEL Section 7, Township 12 South, Range 89 West, of the Sixth Principal Meridian, Gunnison County, Colorado.



LEGEND

- ~ FOUND ORIGINAL STONE
- ~ FOUND GLO BRASS CAP ON STEEL POST
- ~ FOUND REBAR AND CAP BY LS15710
- ~ FOUND No.6 REBAR WITH A 2 1/2" ALUMINUM CAP, LS24963
- ~ WELL HEAD
- (R) ~ GLO RECORD
- (M) ~ MEASURED IN FIELD
- L ~ 90° SYMBOL
- WC ~ WITNESS CORNER

BASIS OF BEARING:

THE LINE FROM THE SE CORNER TO THE E 1/4 CORNER OF SECTION 7, TOWNSHIP 12 SOUTH, RANGE 89 WEST, 6TH P.M., WAS ASSUMED TO BEAR N. 0°05'36" W. AS MONUMENTED AND SHOWN HEREON.

CERTIFICATE OF SURVEY:

I, David G. Nicewicz, a Registered Land Surveyor in the State of Colorado, do hereby certify that the survey represented by this plat was made under my direction and supervision, and that this plat accurately represents this survey.

David G. Nicewicz P.L.S. No. 24963
(for and on behalf of AECOM)



Scale: 1" = 2000 U.S. Survey feet

AECOM OF GLENWOOD SPRINGS COLORADO, has in accordance with a request from ERIC SANFORD, for SG INTERESTS I, LTD, determined the location of FEDERAL 12-89-07 #4 BOTTOM HOLE LOCATION to be 688 FSL & 1105 FWL Section 9, Township 12 South, Range 89 West, of the Sixth Principal Meridian, Gunnison County, Colorado.

GAS WELL LOCATION PLAT

FEDERAL 12-89-07 #4 BOTTOM HOLE LOCATION
Located in the SW 1/4 of Section 9,
Township 12 South, Range 89 West, 6th P.M.,
Gunnison County, Colorado

SURVEYED BY: DGN	DWG DATE: 11/06/15	AECOM David G. Nicewicz, PLS
DRAFTED BY: MLD	SCALE: 1" = 2000'	804 Colorado Ave, Suite 201 Glenwood Springs Co 81610 cell: (720) 456-1104 email: david.nicewicz@aecom.com
JOB NO.: 22244264.70700	SHEET NO. 2 of 2	