

T5S, R96W, 6th P.M.

Caerus Oil & Gas LLC

NPR 12D-10 596  
NE 1/4 SW 1/4, SECTION 10, T5S, R96W, 6th P.M.  
GARFIELD COUNTY, COLORADO

BASIS OF BEARINGS

BASIS OF BEARINGS IS A G.P.S. OBSERVATION

BASIS OF ELEVATION

SPOT ELEVATION AT THE NORTHWEST CORNER OF SECTION 30, T5S, R95W, 6th P.M., TAKEN FROM THE FORKED GULCH QUADRANGLE, GARFIELD COUNTY, COLORADO, 7.5 MINUTE QUAD. (TOPOGRAPHIC MAP) PUBLISHED BY THE UNITED STATES DEPARTMENT OF THE INTERIOR, GEOLOGICAL SURVEY. SAID ELEVATION IS MARKED AS BEING 5966 FEET.

LINE TABLE

LINE	DIRECTION	LENGTH
L1	S89°57'05"E	623.70'
L2	S89°54'44"E	1114.74'

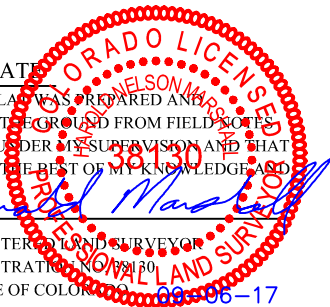


10  
NPR 12D-10 596  
Elev. Graded Ground = 6708.3'

CERTIFICATE

THIS IS TO CERTIFY THAT THE ABOVE PLAT WAS PREPARED AND LOCATION AS SHOWN WAS STAKED ON THE GROUND FROM FIELD NOTES OF ACTUAL SURVEYS MADE BY ME OR UNDER MY SUPERVISION AND THAT THE SAME ARE TRUE AND CORRECT TO THE BEST OF MY KNOWLEDGE AND BELIEF.

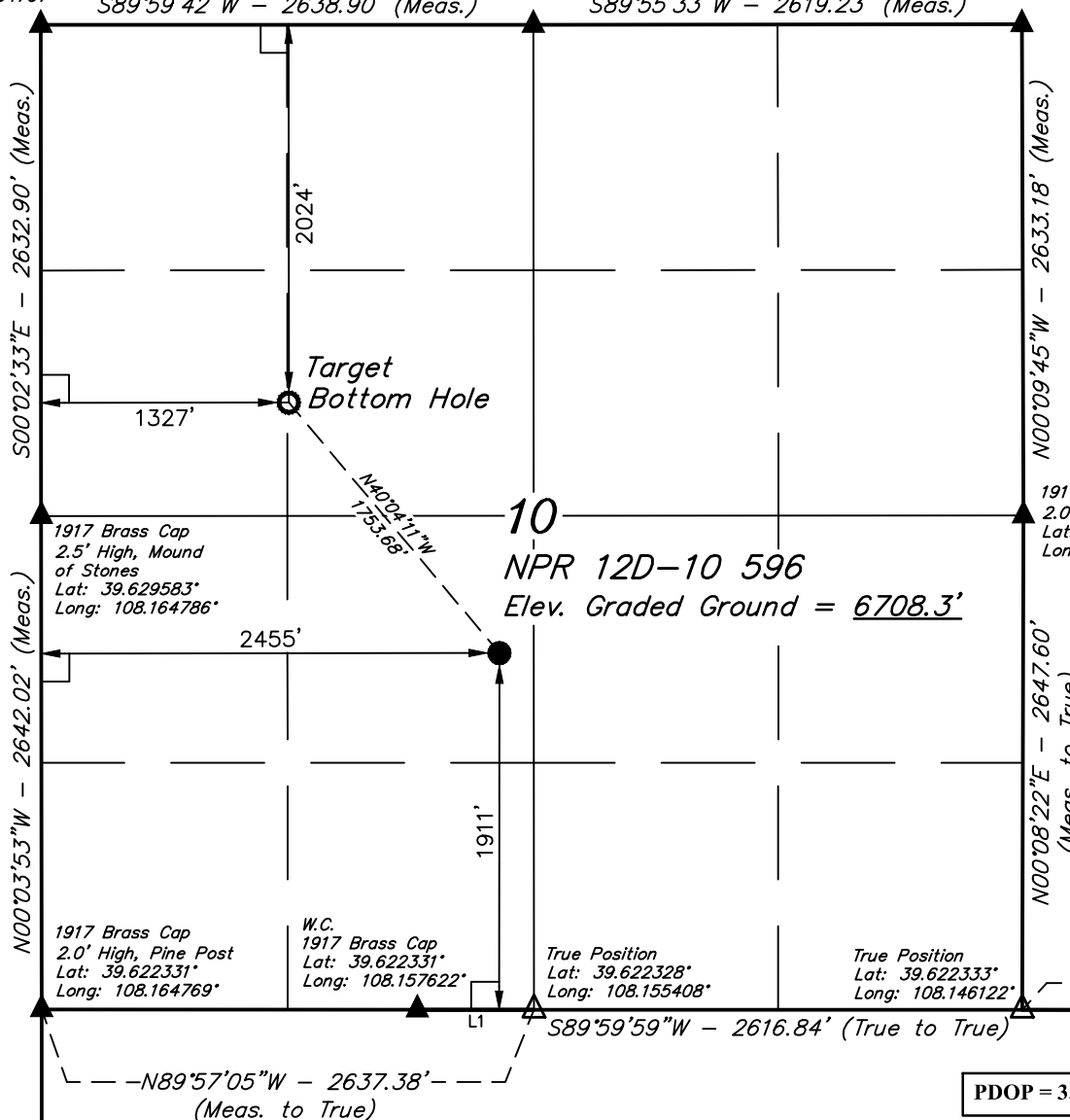
REGISTERED LAND SURVEYOR  
REGISTRATION NO. 19130  
STATE OF COLORADO



1917 Brass Cap  
2.3' High  
Lat: 39.636808°  
Long: 108.164797°

1917 Brass Cap  
1.3' High  
Lat: 39.636814°  
Long: 108.155431°

1917 Brass Cap  
1.3' High  
Lat: 39.636825°  
Long: 108.146133°



LEGEND:

- └─┘ = 90° SYMBOL
- = PROPOSED WELLHEAD.
- = TARGET BOTTOM HOLE.
- ▲ = SECTION CORNERS LOCATED. (NAD 83)
- △ = SECTION CORNERS RE-ESTABLISHED. (Not Set on Ground.) (NAD 83)

<b>NAD 83 (SURFACE LOCATION)</b>	<b>NAD 83 (TARGET BOTTOM HOLE)</b>
LATITUDE = 39°37'39.27" (39.627575)	LATITUDE = 39°37'52.52" (39.631256)
LONGITUDE = 108°09'21.84" (108.156067)	LONGITUDE = 108°09'36.28" (108.160078)
<b>NAD 27 (SURFACE LOCATION)</b>	<b>NAD 27 (TARGET BOTTOM HOLE)</b>
LATITUDE = 39°37'39.35" (39.627597)	LATITUDE = 39°37'52.61" (39.631281)
LONGITUDE = 108°09'19.55" (108.155431)	LONGITUDE = 108°09'33.99" (108.159442)
<b>UTM NAD 27 (ZONE 12)</b>	<b>UTM NAD 27 (ZONE 12)</b>
N: 14403132.25 E: 2441434.26	N: 14404437.30 E: 2440262.70

PDOP = 3.6



UELS, LLC  
Corporate Office \* 85 South 200 East  
Vernal, UT 84078 \* (435) 789-1017

<b>SURVEYED BY</b>	BART HUNTING, J.F.	08-28-17	<b>SCALE</b>
<b>DRAWN BY</b>	M.D.	09-06-17	1" = 1000'

**WELL LOCATION PLAT**