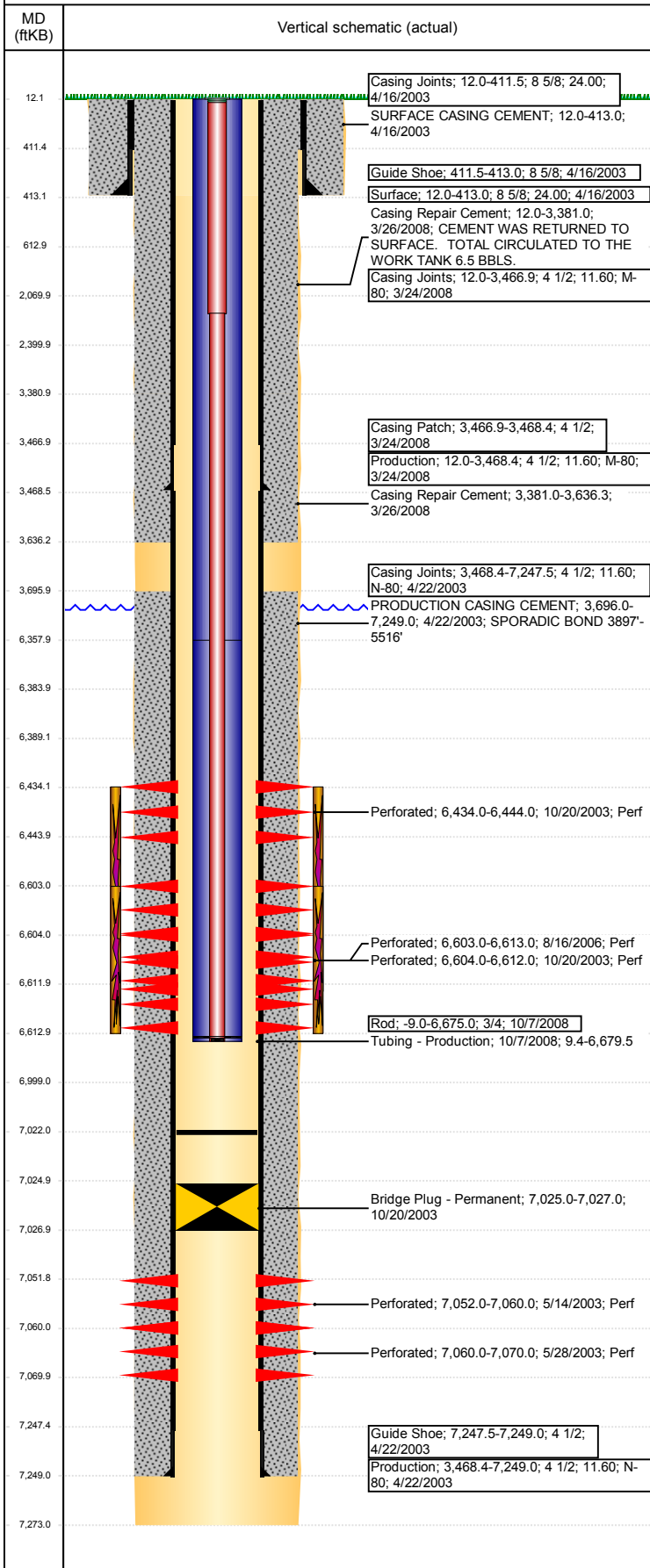


Well Name: WELLS 12-11

VERTICAL - ORIGINAL HOLE, 9/19/2017 11:35:25 AM



Well Header

API 05-123-21130	Business Unit DJ BASIN	District 15	Well Config VERTICAL
Original KB Elevation (ft) 4,682	KB - GL / MSL (ftKB) 12.00	Spud Date 4/15/2003	P & A Date
Comment			

Directions To Well

RD 67 & RD 68 , 2/10 E, SOUTH 2 5/10 TO COW CAMP. SE 0.2, S 0.1, E 0.1, S 0.4, SE 0.4, S 0.9, W 0.2 INTO LOCATION

Congressional Location

Quarter 3 SW	Quarter 4 NW	Section 11	Township 5	Twntshp N/S Dir N	Range 63	Range E/W Dir W
-----------------	-----------------	---------------	---------------	----------------------	-------------	--------------------

Bottom Hole Location

North-South Distance (ft)	From N or S Line	East-West Distance (ft)	From E or W Line
---------------------------	------------------	-------------------------	------------------

Plug Back Total Depths

Date	Depth (ftKB)	Method	Com
4/22/2003	7,233.0	CASING TALLY	TOP OF FLOAT COLLAR
5/13/2003	7,183.0	CASED HOLE LOG	DEPTH LOGGER ON CBL
3/27/2008	7,022.0	TAG	CLEAN OUT

Wellbore Sections

Section Des	Size (in)	Act Top, MD (ftKB)	Act Btm, MD (ftKB)
SURFACE	12 1/4	12	413
PRODUCTION	7 7/8	413	7,273

Zone Statuses

Zone Name	Status Date	Status	Fluid Type	Job	Prod Method
NIOBRARA	11/3/2003	PR	Gas	RECOMPLETI...	
NIOBRARA	8/11/2006	SI	Water	RE-FRAC, 8/11...	
NIOBRARA	10/31/2006	PR	Oil	RE-FRAC, 8/11...	
NIOBRARA	3/19/2008	SI		CASING REPA...	
NIOBRARA	4/7/2008	PR	Gas	CASING REPA...	
NIOBRARA	10/8/2008	PR	Gas	CASING REPA...	
CODELL	11/3/2003	PR	Gas	RECOMPLETI...	
CODELL	8/11/2006	SI		RE-FRAC, 8/11...	
CODELL	10/31/2006	PR	Oil	RE-FRAC, 8/11...	
CODELL	3/19/2008	SI		CASING REPA...	
CODELL	4/7/2008	PR	Gas	CASING REPA...	
CODELL	10/8/2008	PR	Gas	CASING REPA...	
J SAND	10/20/2003	P&A	Gas	DRILLING/CO...	

Casing Strings

Surface, 413.0ftKB

Casing Description	Run Date	OD (in)	Wt/Len (l...)	Grade	Top, MD (ft...)	MD (ftKB)
Surface	4/16/2003	8 5/8	24.00		12.0	413.0

Production, 3,468.4ftKB

Casing Description	Run Date	OD (in)	Wt/Len (l...)	Grade	Top, MD (ft...)	MD (ftKB)
Production	3/24/2008	4 1/2	11.60	M-80	12.0	3,468.4

Production, 7,249.0ftKB

Casing Description	Run Date	OD (in)	Wt/Len (l...)	Grade	Top, MD (ft...)	MD (ftKB)
Production	4/22/2003	4 1/2	11.60	N-80	12.0	7,249.0

Cement

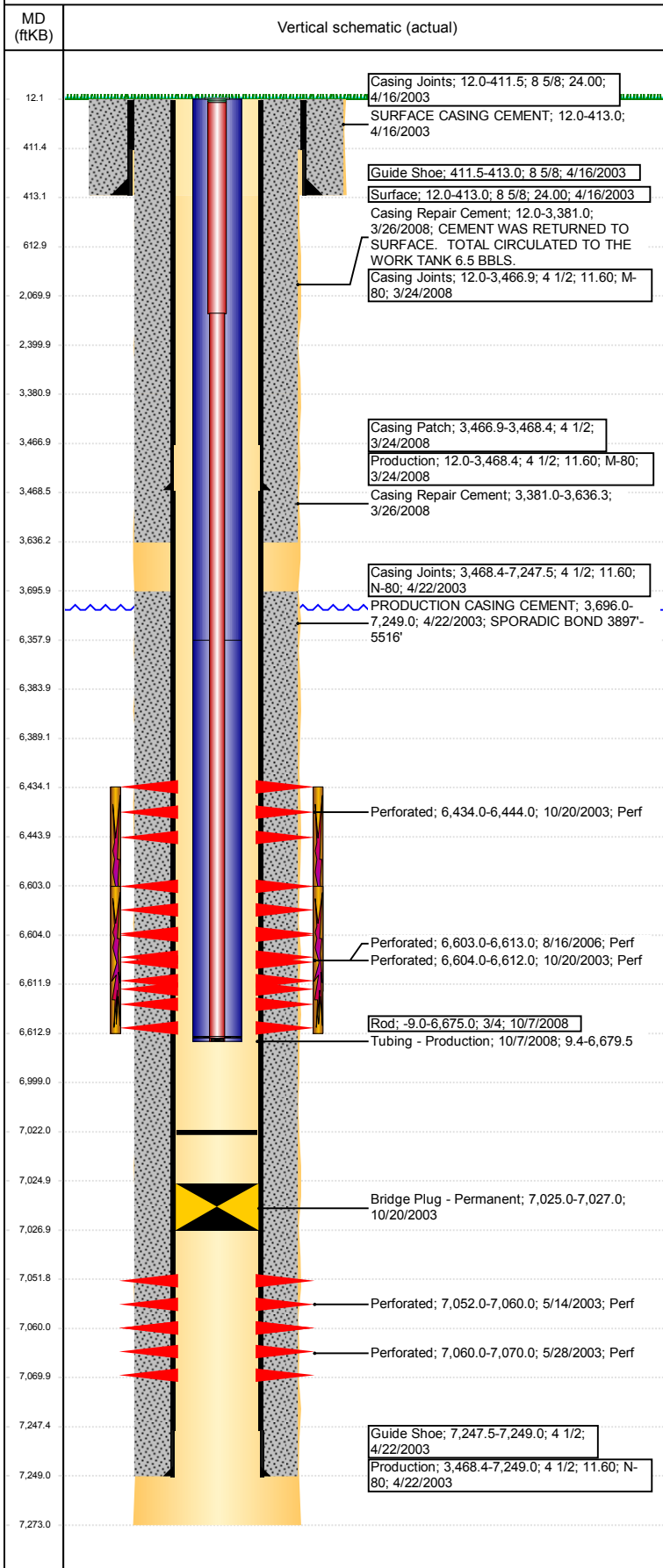
Description	Top Depth (ftKB)	Bottom Depth (ftKB)
SURFACE CASING CEMENT	12.0	413.0
PRODUCTION CASING CEMENT	3,696.0	7,249.0
Casing Repair Cement	12.0	3,381.0
Casing Repair Cement	3,381.0	3,636.3
Dump Bail	6,999.0	7,025.0
Dump Bail	6,358.0	6,384.0
Balance Plug	2,070.0	2,400.0
Balance Plug	12.0	613.0

Tubing Strings

Tubing Description	Run Date	String...	ID (in)	Wt (lb/ft)	Grade	Len (ft)	Set De...
Tubing - Production	9/15/2006	2 3/8	2.00	4.70	J-55	6,579.00	

Well Name: WELLS 12-11

VERTICAL - ORIGINAL HOLE, 9/19/2017 11:35:26 AM



Tubing Strings							
Tubing Description	Run Date	String...	ID (in)	Wt (lb/ft)	Grade	Len (ft)	Set De...
Tubing - Production	8/26/2008	2 3/8	2.00	4.70	J-55	6,411.02	
Tubing Description	Run Date	String...	ID (in)	Wt (lb/ft)	Grade	Len (ft)	Set De...
Tubing - Production	10/7/2008	2 3/8	2.00	4.70	J-55	6,670.14	
Other In Hole							
Run Date	Des			OD (in)	Top (ftKB)	Btm (ftKB)	
10/20/2003	Bridge Plug - Permanent			3.99	7,025.0	7,027.0	
8/3/2017	Cast Iron Bridge Plug			3.99	6,384.0	6,389.0	
Logs							
Date	Type			Top, MD (ftKB)		Btm, MD (ftKB)	
4/21/2003	Compensated Density			413.0		7,273.0	
5/13/2003	Cement Bond			3,400.0		7,178.0	
Perforation Data							
Linked Zone	Bnch/St g	Sum of Entered Shot Total	Top (ftKB)	Btm (ftKB)	Date		
NIOBRARA, ORIGINAL HOLE		20	6,434.00	6,444.00	10/20/2003		
CODELL, ORIGINAL HOLE		40	6,603.00	6,613.00	8/16/2006		
CODELL, ORIGINAL HOLE		32	6,604.00	6,612.00	10/20/2003		
J SAND, ORIGINAL HOLE		32	7,052.00	7,060.00	5/14/2003		
J SAND, ORIGINAL HOLE		40	7,060.00	7,070.00	5/28/2003		
Total (Sum)		164					
Stimulation Intervals							
Start Date	Primary Job Type						
10/21/2003	RECOMPLETION						
Technical Result		Tech Result Details			Tech Result Note		
Comment							
C/N FRAC'D LIMITED ENTRY							
Start Date	Primary Job Type						
9/12/2006	RE-FRAC						
Technical Result		Tech Result Details			Tech Result Note		
Comment							