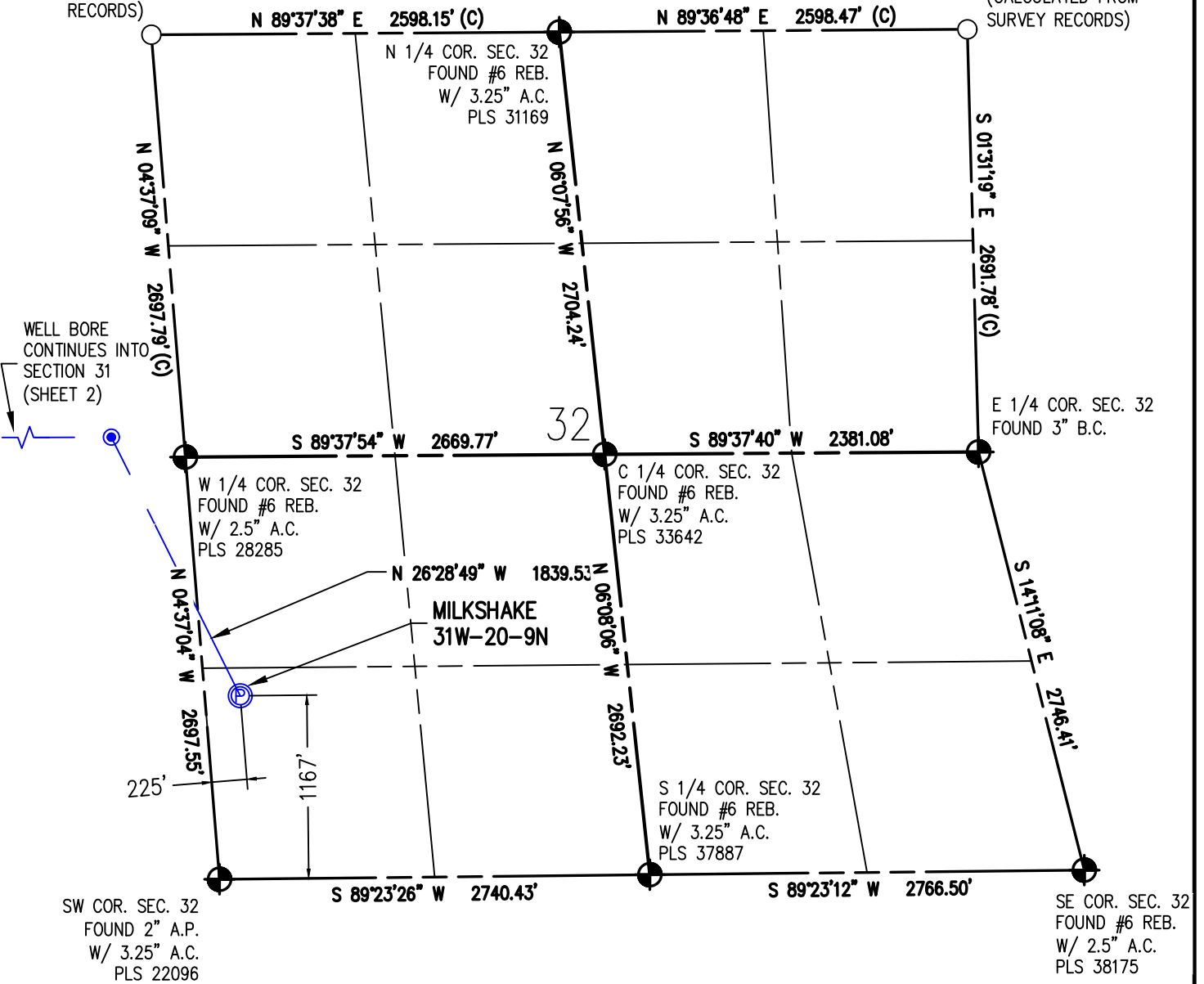


WELL CERTIFICATION EXHIBIT MILKSHAKE 31W-20-9N

SW 1/4 SW 1/4 SEC. 32, T6N, R67W, 6TH P.M.

NW COR. SEC. 32
(CALCULATED
FROM SURVEY
RECORDS)

NE COR. SEC. 32
(CALCULATED FROM
SURVEY RECORDS)



I HEREBY CERTIFY THAT THIS WELL LOCATION CERTIFICATE WAS PREPARED BY ME, OR UNDER MY DIRECT SUPERVISION, THAT THE FIELD WORK WAS COMPLETED ON 3/2/2017, THAT IT IS NOT A LAND SURVEY PLAT OR AN IMPROVEMENT SURVEY PLAT, AND THAT IT IS NOT TO BE RELIED UPON FOR ESTABLISHMENT OF FENCE, BUILDING OR OTHER FUTURE IMPROVEMENT LINES.

AARON A. DEMO
Professional Land Surveyor Registration No. 38285
State of Colorado
FOR AND ON BEHALF OF BASELINE ENGINEERING CORP.

N

0 1000'
Scale 1" = 1000' ft

SURFACE LOCATION
SEC. 32, T6N, R67W
GROUND ELEVATION = 4957.0'
PDOP = 1.3
LATITUDE = 40.439169°
LONGITUDE = -104.924570°
1167' FSL, 225' FWL
ENTRY POINT LOCATION
SEC. 31, T6N, R67W
LATITUDE = 40.443702°
LONGITUDE = -104.927477°
2553' FNL, 460' FEL
BOTTOM HOLE LOCATION
SEC. 36, T6N, R68W
LATITUDE = 40.443789°
LONGITUDE = -104.961818°
2417' FNL, 460' FWL

NOTES:

1. INDICATES SECTION CORNER
2. INDICATES CALCULATED CORNER
3. (C) INDICATES CALCULATED DIMENSION
4. ELEVATION BASED ON NAVD88 (GEOID12B)
5. BEARINGS DERIVED FROM COLORADO COORDINATE SYSTEM OF 1983 NORTH ZONE.
6. OPERATOR: JEFF VAN HORN
7. IMPROVEMENTS: SEE LOCATION DRAWING FOR ALL VISIBLE IMPROVEMENTS WITHIN 500' OF DISTURBED AREA.
8. WELL FOOTAGES ARE MEASURED AT RIGHT ANGLES TO THE SECTION LINES.

NEAREST CULTURAL ITEMS:

BUILDING: 849' S
BUILDING UNIT: 1299' S
HIGH OCCUPANCY BUILDING UNIT: 5280'+
DESIGNATED OUTSIDE ACTIVITY AREA: 5280'+
PUBLIC ROAD: WELD COUNTY ROAD 28 1135' S
ABOVE GROUND UTILITY: 1256' S
RAILROAD: 5280'
PROPERTY LINE: 9' N
SURFACE USE: GRASSLAND
NEAREST EXISTING WELL: 443' N



DRAWN BY	RPM	CHECKED BY	AAD
INITIAL SUBMITTAL	8/18/2017	REVISED	N/A
DRAWING SIZE	8.5" X 11"	JOB NO.	EXT06N67W32-01
SHEET	1 OF 3		

BASELINE
Engineering - Planning - Surveying
4007 S. LINCOLN AVENUE, SUITE 405 • LOVELAND, COLORADO 80537
P: 970.353.7800 • F: 970.353.7801 • www.baselinecorp.com

WELL CERTIFICATION EXHIBIT MILKSHAKE 31W-20-9N

SW 1/4 SW 1/4 SEC. 32, T6N, R67W, 6TH P.M.

NW COR. SEC. 31
FOUND #6 REB.
W/ 2.5" A.C.
PLS 31169

N 1/4 COR. SEC. 31
FOUND #6 REB.
W/ 3.25" A.C.
PLS 22098

NE COR. SEC. 31
(CALCULATED
FROM SURVEY
RECORDS)

E 1/4 COR. SEC. 31
FOUND #6 REB.
W/ 2.5" A.C.
PLS 28285

SE COR. SEC. 31
FOUND 2" A.P.
W/ 3.25" A.C.
PLS 22096

W 1/4 COR. SEC. 31
FOUND #6 REB.
W/ 2.5" A.C.
PLS 31169

C 1/4 COR. SEC. 31
(CALCULATED FROM
SURVEY RECORDS)

S 1/4 COR. SEC. 31
FOUND #6 REB.
W/ 3.25" A.C.
PLS 22098

WELL BORE
CONTINUES INTO
SECTION 36
(SHEET 3)

ENTRY POINT

WELL BORE
CONTINUES INTO
SECTION 32
(SHEET 1)

I HEREBY CERTIFY THAT THIS WELL LOCATION CERTIFICATE WAS PREPARED BY ME, OR UNDER MY DIRECT SUPERVISION, THAT THE FIELD WORK WAS COMPLETED ON 3/2/2017, THAT IT IS NOT A LAND SURVEY PLAT OR AN IMPROVEMENT SURVEY PLAT, AND THAT IT IS NOT TO BE RELIED UPON FOR ESTABLISHMENT OF FENCE, BUILDING OR OTHER FUTURE IMPROVEMENT LINES.

AARON A. DEMO
Professional Land Surveyor Registration No. 38285
State of Colorado
FOR AND ON BEHALF OF BASELINE ENGINEERING CORP.

N



0 1000'
Scale 1" = 1000' ft

SURFACE LOCATION
SEC. 32, T6N, R67W
GROUND ELEVATION = 4957.0'
PDOP = 1.3
LATITUDE = 40.439169°
LONGITUDE = -104.924570°
1167' FSL, 225' FWL

ENTRY POINT LOCATION
SEC. 31, T6N, R67W
LATITUDE = 40.443702°
LONGITUDE = -104.927477°
2553' FNL, 460' FEL

BOTTOM HOLE LOCATION
SEC. 36, T6N, R68W
LATITUDE = 40.443789°
LONGITUDE = -104.961818°
2417' FNL, 460' FWL

NOTES:

1.  INDICATES SECTION CORNER
2.  INDICATES CALCULATED CORNER
3. (C) INDICATES CALCULATED DIMENSION
4. ELEVATION BASED ON NAVD88 (GEOID12B)
5. BEARINGS DERIVED FROM COLORADO COORDINATE SYSTEM OF 1983 NORTH ZONE.
6. OPERATOR: JEFF VAN HORN
7. IMPROVEMENTS: SEE LOCATION DRAWING FOR ALL VISIBLE IMPROVEMENTS WITHIN 500' OF DISTURBED AREA.
8. WELL FOOTAGES ARE MEASURED AT RIGHT ANGLES TO THE SECTION LINES.

NEAREST CULTURAL ITEMS:

BUILDING: 849' S
BUILDING UNIT: 1299' S
HIGH OCCUPANCY BUILDING UNIT: 5280'+
DESIGNATED OUTSIDE ACTIVITY AREA: 5280'+
PUBLIC ROAD: WELD COUNTY ROAD 28 1135' S
ABOVE GROUND UTILITY: 1256' S
RAILROAD: 5280'
PROPERTY LINE: 9' N
SURFACE USE: GRASSLAND,
NEAREST EXISTING WELL: 443' N

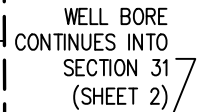


DRAWN BY	RPM	CHECKED BY	AAD
INITIAL SUBMITTAL	8/18/2017	REVISED	N/A
DRAWING SIZE	8.5" X 11"	JOB NO.	EXT06N67W32-01
SHEET	2 OF 3		


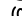


SW 1/4 SW 1/4 SEC. 32, T6N, R67W, 6TH P.M.

NE COR. SEC. 36
FOUND #6 REB.
W/ 2.5" A.C.
PLS 31169



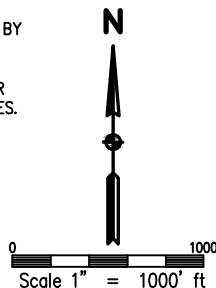
AARON A. DEMO
Professional Land Surveyor Registration No. 38285
State of Colorado
FOR AND ON BEHALF OF BASELINE ENGINEERING CORP.

1.  INDICATES SECTION CORNER
2.  INDICATES CALCULATED CORNER
3. (C) INDICATES CALCULATED DIMENSION
4. ELEVATION BASED ON NAVD88 (GEOID12B)
5. BEARINGS DERIVED FROM COLORADO COORDINATE SYSTEM OF 1983 NORTH ZONE.
6. OPERATOR: JEFF VAN HORN
7. IMPROVEMENTS: SEE LOCATION DRAWING FOR ALL VISIBLE IMPROVEMENTS WITHIN 500' OF DISTURBED AREA.
8. WELL FOOTAGES ARE MEASURED AT RIGHT ANGLES TO THE SECTION LINES.

SURFACE LOCATION
SEC. 32, T6N, R67W
GROUND ELEVATION = 4957.0'
PDOP = 1.3
LATITUDE = 40.439169°
LONGITUDE = -104.924570°
1167' FSL, 225' FWL

ENTRY POINT LOCATION
SEC. 31, T6N, R67W
LATITUDE = 40.443702°
LONGITUDE = -104.927477°
2553' FNL, 460' FWL

BOTTOM HOLE LOCATION
SEC. 36, T6N, R68W
LATITUDE = 40.443789°
LONGITUDE = -104.961818°
2417' FNL, 460' FWL



BUILDING: 849' S
BUILDING UNIT: 1299' S
HIGH OCCUPANCY BUILDING UNIT: 5280'+
DESIGNATED OUTSIDE ACTIVITY AREA: 5280'+
PUBLIC ROAD: WELD COUNTY ROAD 28 1135' S
ABOVE GROUND UTILITY: 1256' S
RAILROAD: 5280'
PROPERTY LINE: 9' N
SURFACE USE: GRASSLAND.
NEAREST EXISTING WELL: 443' N



DRAWN BY RPM	CHECKED BY AAD
INITIAL SUBMITTAL	8/18/2017
REVISED	N/A
DRAWING SIZE	8.5" X 11"
JOB NO.	EXT06N67W32-01
SHEET 3	OF 3

