

Union Pacific 72X31 Proposed WBD

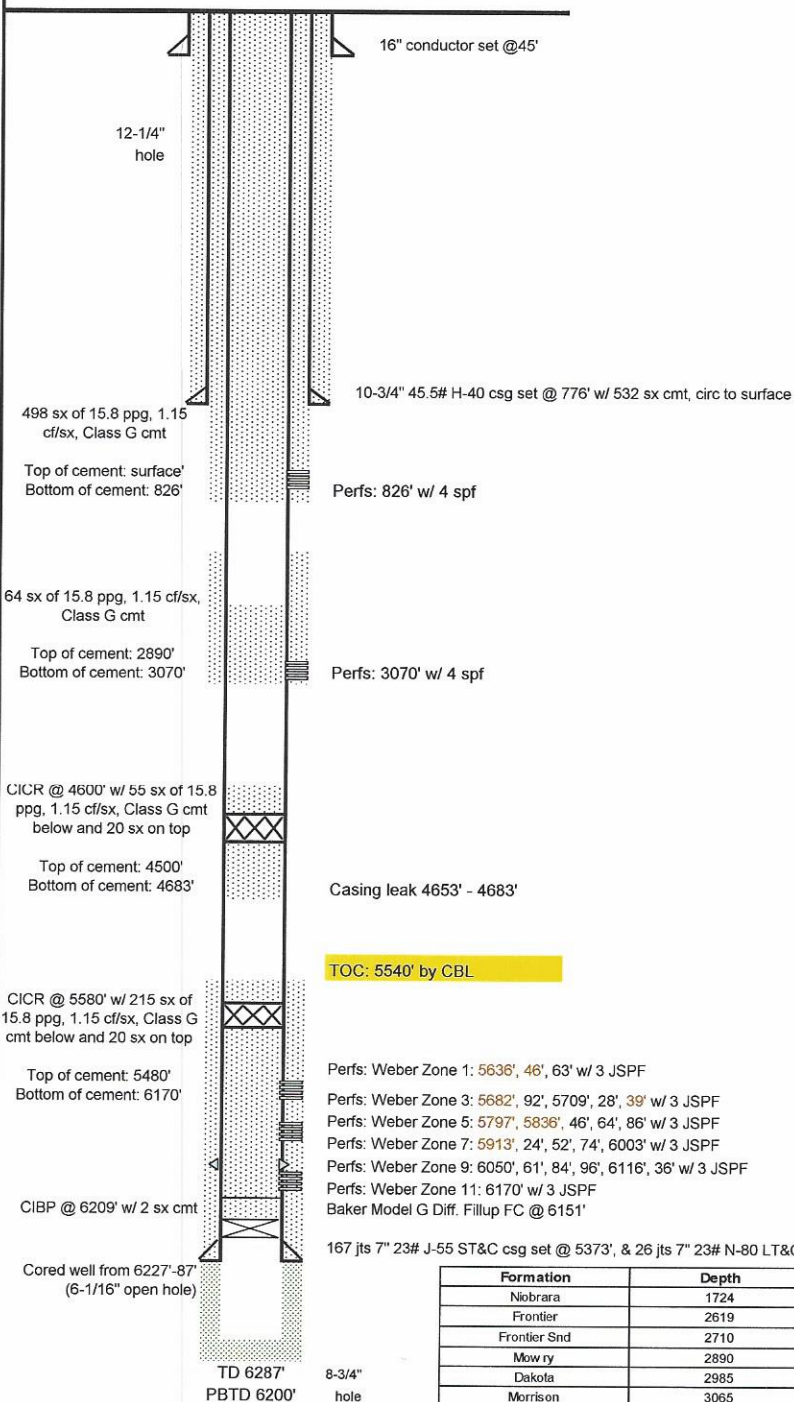
Location: 1329' FNL & 1309' FEL, Sec. 31, Township 2N, Range 102W, Rio Blanco County, CO

TEAM: Rangely FMT
FIELD: Rangely FMT
LEASE/UNIT: Rangely Weber Sand Unit (RWSU)
COUNTY: Rio Blanco, CO

DATE CHKD: Sep. 26, 2017
BY: Chad Kavander
WELL: UP72X31
STATE: Colorado

SPUD DATE: 07/19/1971
COMP. DATE: 09/05/1971
CURRENT STATUS: TA'd (leak in csg)

KB = +12'
Elevation = 5295' KB
TD = 6287'
PBTD = 6200'
ETD = 6200'
API = 05-103-07364
CHEVNO = DG2817
Permit # = 71-504



167 jts 7" 23# J-55 ST&C csg set @ 5373', & 26 jts 7" 23# N-80 LT&C csg f/ 5373'-6215', set w/ 700 sx cmt, lost circ, TOC @ 5540' by CBL.

Formation	Depth
Niobrara	1724
Frontier	2619
Frontier Snd	2710
Mowry	2890
Dakota	2985
Morrison	3065
Curtis	3735
Entrada	3852
Carmel	3990
Navajo	4048
Chinle	4652
Shinarump	4780
Moenkopi	4850
Weber	5506