

Union Pacific 72X31

Location: 1329' FNL & 1309' FEL, Sec. 31, Township 2N, Range 102W, Rio Blanco County, CO

TEAM: Rangely FMT

FIELD: Rangely FMT

LEASE/UNIT: Rangely Weber Sand Unit (RWSU)

COUNTY: Rio Blanco, CO

DATE CHKD:

Dec. 30, 2015

Aug. 12, 2017

BY:

J. Daraie

kgcc

WELL:

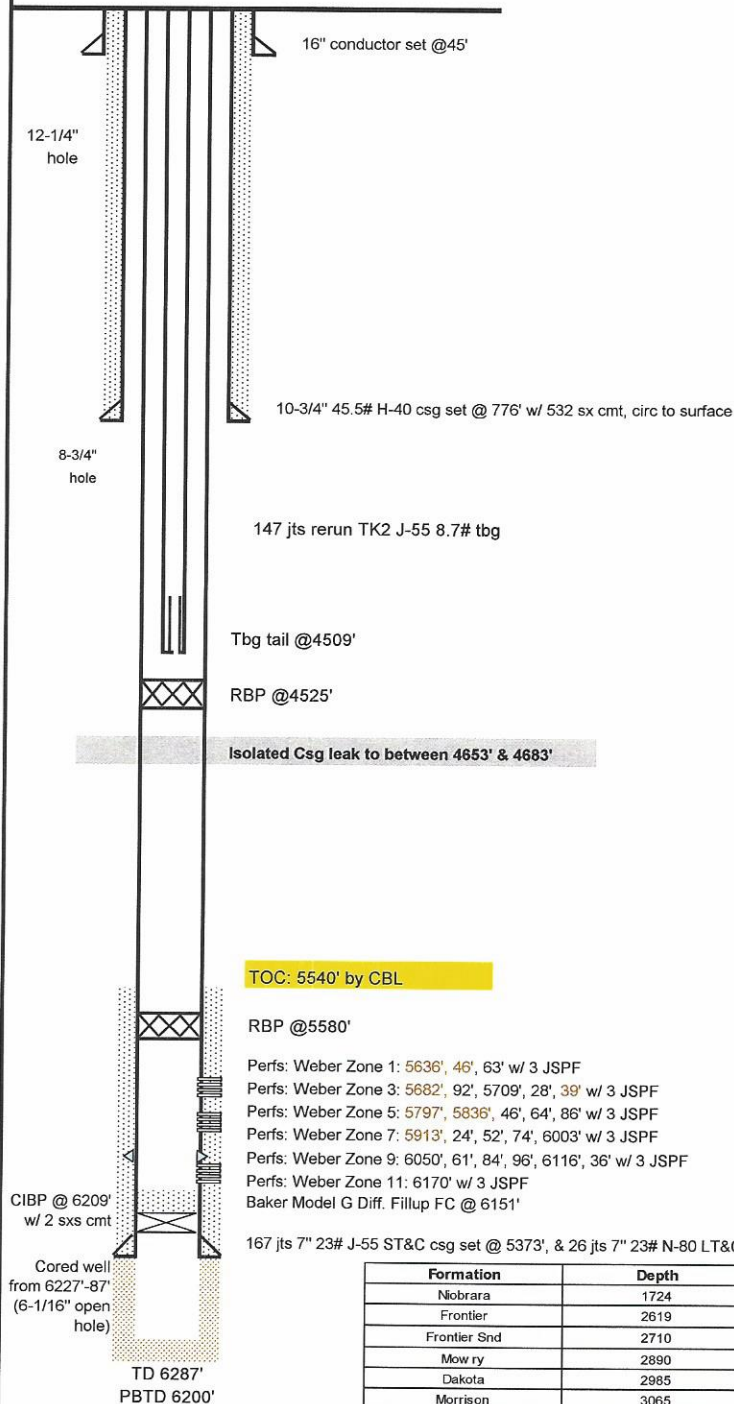
UP72X31

STATE:

Colorado

SPUD DATE: 07/19/1971
COMP. DATE: 09/05/1971
CURRENT STATUS: TA'd (leak in csg)

KB = +12'
Elevation = 5295' KB
TD = 6287'
PBDT = 6200'
ETD = 6200'
API = 05-103-07364
CHEVNO = DG2817
Permit # = 71-504



TOC: 5540' by CBL

RBP @ 5580'

Perfs: Weber Zone 1: 5636', 46', 63' w/ 3 JSPF
Perfs: Weber Zone 3: 5682', 92', 5709', 28', 39' w/ 3 JSPF
Perfs: Weber Zone 5: 5797', 5836', 46', 64', 86' w/ 3 JSPF
Perfs: Weber Zone 7: 5913', 24', 52', 74', 6003' w/ 3 JSPF
Perfs: Weber Zone 9: 6050', 61', 84', 96', 6116', 36' w/ 3 JSPF
Perfs: Weber Zone 11: 6170' w/ 3 JSPF
Baker Model G Diff. Fillup FC @ 6151'

167 jts 7" 23# J-55 ST&C csg set @ 5373', & 26 jts 7" 23# N-80 LT&C csg fl 5373'-6215', set w/ 700 sx cmt, lost circ, TOC @ 5540' by CBL.

Formation	Depth
Niobrara	1724
Frontier	2619
Frontier Snd	2710
Mow ry	2890
Dakota	2985
Morrison	3065
Curtis	3735
Entrada	3852
Carmel	3990
Navajo	4048
Chinle	4652
Shinarump	4780
Moenkopi	4850
Weber	5506

Shoot and Squeeze @ 3,070' with ? Cmt.