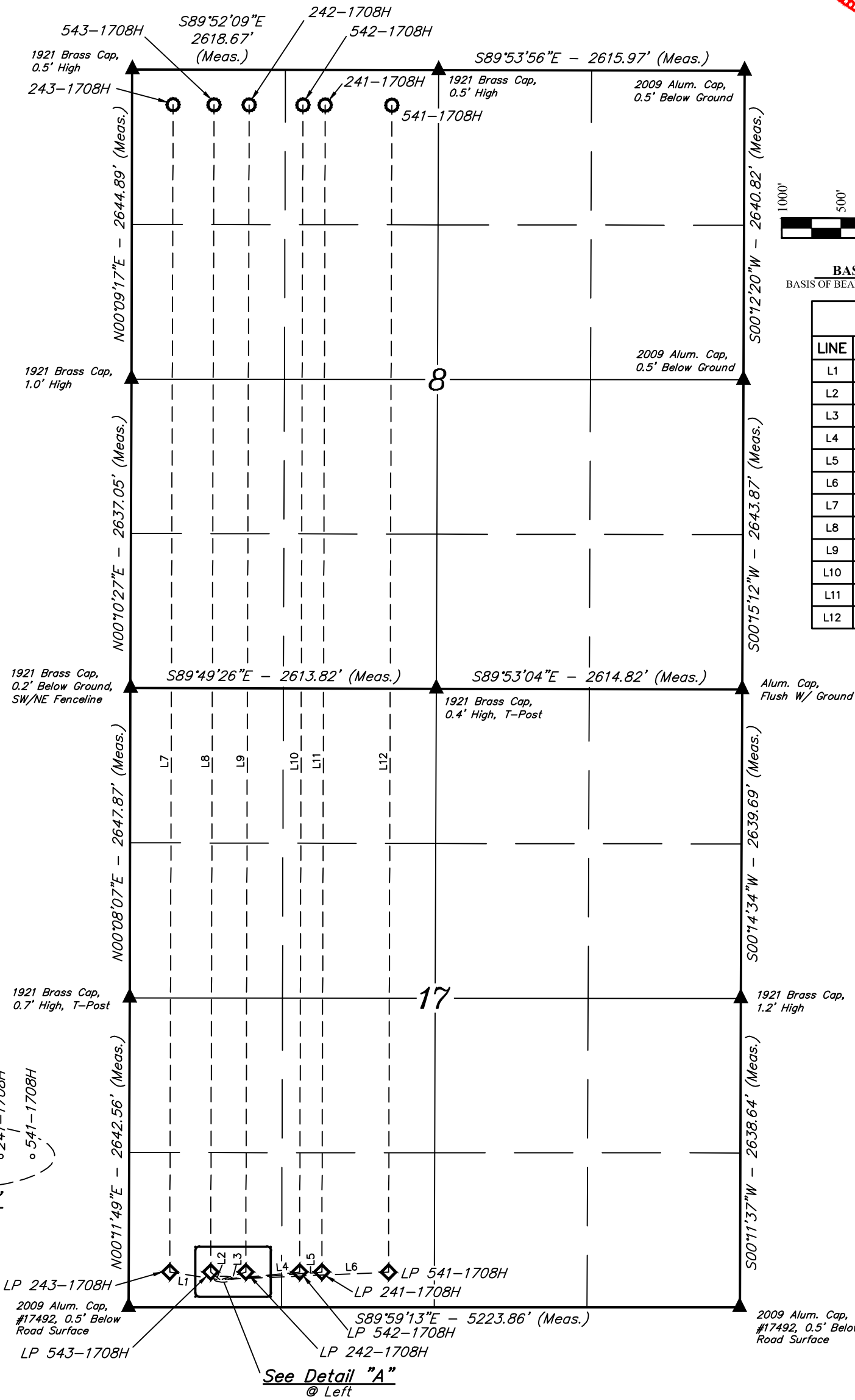


LEGEND:

- = TARGET BOTTOM HOLE.
- ◇ = LANDING POINT
- ▲ = SECTION CORNERS LOCATED. (NAD 83)

WELL	BHL FOOTAGES	SECTION	TOWNSHIP	RANGE
243-1708H	300' FNL 350' FWL	8	11N	63W
543-1708H	300' FNL 700' FWL	8	11N	63W
242-1708H	300' FNL 1000' FWL	8	11N	63W
542-1708H	300' FNL 1460' FWL	8	11N	63W
241-1708H	300' FNL 1650' FWL	8	11N	63W
541-1708H	300' FNL 2220' FWL	8	11N	63W



WELL	SHL FOOTAGES	SECTION	TOWNSHIP	RANGE
243-1708H	240' FSL 748' FWL	17	11N	63W
543-1708H	240' FSL 773' FWL	17	11N	63W
242-1708H	240' FSL 798' FWL	17	11N	63W
542-1708H	240' FSL 823' FWL	17	11N	63W
241-1708H	240' FSL 848' FWL	17	11N	63W
541-1708H	240' FSL 873' FWL	17	11N	63W

WELL	LP FOOTAGES	SECTION	TOWNSHIP	RANGE
243-1708H	300' FSL 350' FWL	17	11N	63W
543-1708H	300' FSL 700' FWL	17	11N	63W
242-1708H	300' FSL 1000' FWL	17	11N	63W
542-1708H	300' FSL 1460' FWL	17	11N	63W
241-1708H	300' FSL 1650' FWL	17	11N	63W
541-1708H	300' FSL 2220' FWL	17	11N	63W

FIFTH CREEK ENERGY COMPANY, LLC

CRITTER CREEK 17-4
SW 1/4 SW 1/4, SECTION 17, T11N, R63W, 6th P.M.
WELD COUNTY, COLORADO



UELS, LLC
Corporate Office * 85 South 200 East
Vernal, UT 84078 * (435) 789-1017

SURVEYED BY	CHAD MEIERS, J.F.	08-08-17	SCALE
DRAWN BY	C.D.L.	08-15-17	1" = 1000'
MULTI-WELL PLAN		FIGURE #5	