

CERTIFICATE OF SURVEY

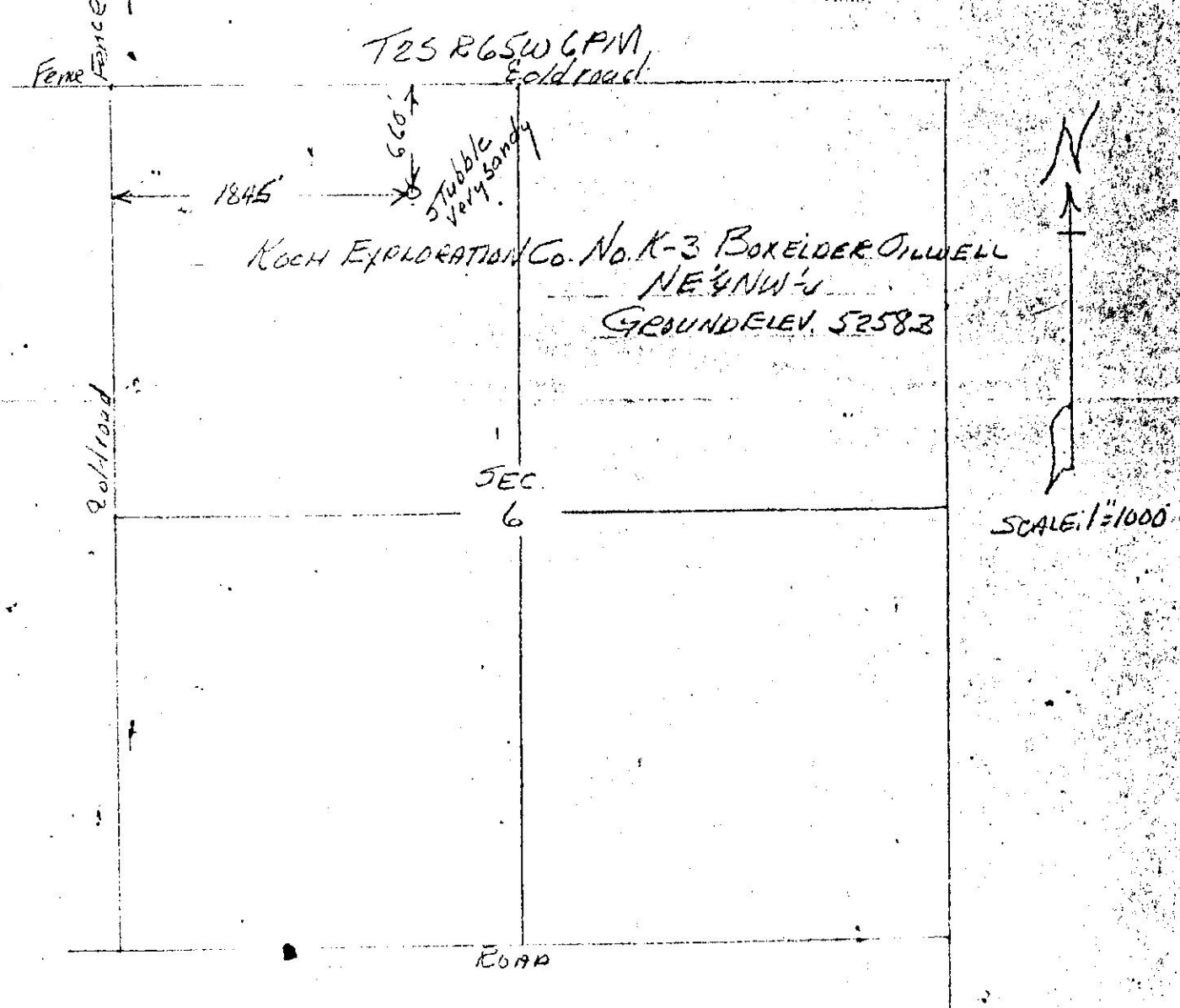
for

Koch Exploration Co. FEB 24 1975
Adams County, Colorado

RECEIVED



00353727



I hereby certify that the above plat is an accurate representation of a correct survey showing the location of Koch Exploration Co. No. K-3 Boxelder Oilwell in NE 1/4 NW 1/4 Sec. 6 T2S R6SW 6PM. The elevation of the ground at the stake is 5258.3 feet above sea level from U.S.G.S. Bench Mark.

Fort Morgan, Colorado
March 24, 1974

Loe J. Osborne
Registered Professional Engineer
State of Colorado