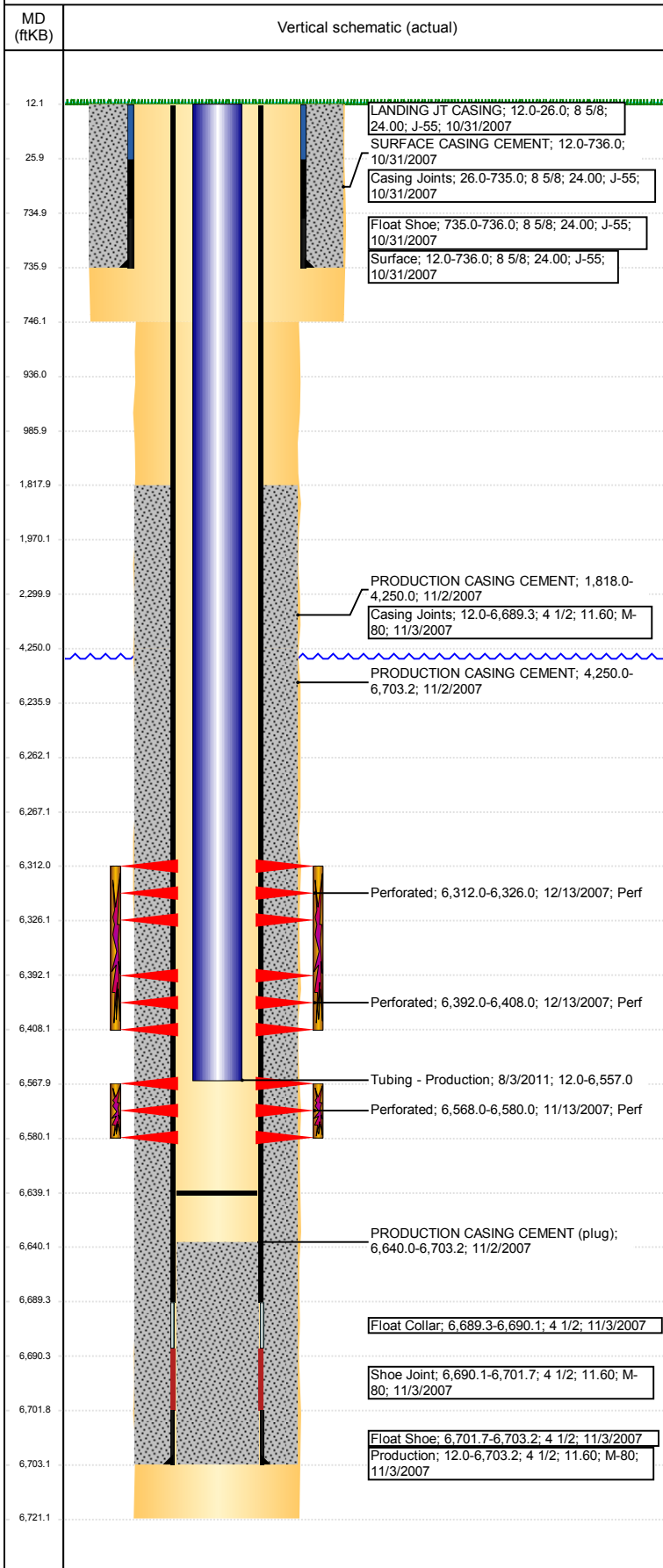


# Wellbore Schematic Input Report

**Well Name: 70 RANCH USX BB23-02**

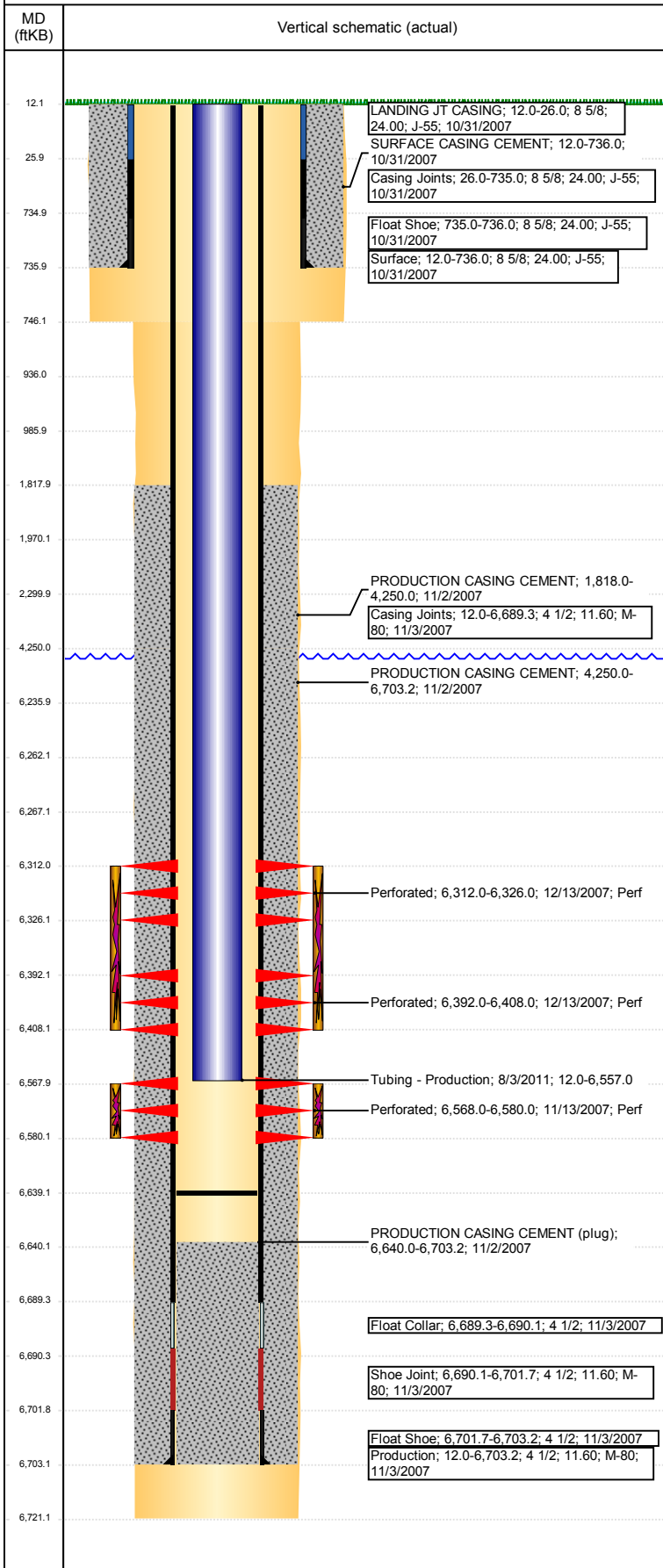
VERTICAL - ORIGINAL HOLE, 9/25/2017 5:21:49 PM



Well Header							
API 05-123-26066	Business Unit DJ BASIN		District 15		Well Config VERTICAL		
Original KB Elevation (ft) 4,623	KB - GL / MSL (ftKB) 12.00		Spud Date 10/30/2007		P & A Date		
Comment							
Directions To Well RD 68 & RD 67. EAST 2/10. SOUTH 2.5 MILES. SOUTH EAST 2/10. SOUTH 1.1 MILES. EAST 4/10. SOUTH 2.5 MILES. SOUTH 1/10 INTO.							
Congressional Location							
Quarter 3 NW	Quarter 4 NE	Section 23	Township 5	Twntshp N/S Dir N	Range 63	Range E/W Dir W	
Bottom Hole Location							
North-South Distance (ft)		From N or S Line		East-West Distance (ft)		From E or W Line	
Plug Back Total Depths							
Date	Depth (ftKB)	Method		Com			
11/2/2007	6,689.1	TAG		TOP OF FLOAT COLLAR			
11/13/2007	6,640.0	TAG		DEPTH LOGGER ON CBL			
2/13/2008	6,639.0	TAG		CHASE PLUG AND CLEAN OUT			
8/2/2011	6,639.0	TAG		SLICK LINE.			
Wellbore Sections							
Section Des		Size (in)		Act Top, MD (ftKB)		Act Btm, MD (ftKB)	
SURFACE		12 1/4		12		746	
PRODUCTION		7 7/8		746		6,721	
Zone Statuses							
Zone Name	Status Date	Status	Fluid Type	Job	Prod Method		
NIOBRARA	1/29/2008	PR		DRILLING/CO...			
CODELL	1/29/2008	PR		DRILLING/CO...			
Casing Strings							
Surface, 736.0ftKB							
Casing Description	Run Date	OD (in)	Wt/Len (l...	Grade	Top, MD (ft...	MD (ftKB)	
Surface	10/31/2007	8 5/8	24.00	J-55	12.0	736.0	
Production, 6,703.2ftKB							
Casing Description	Run Date	OD (in)	Wt/Len (l...	Grade	Top, MD (ft...	MD (ftKB)	
Production	11/3/2007	4 1/2	11.60	M-80	12.0	6,703.2	
Cement							
Description				Top Depth (ftKB)		Bottom Depth (ftKB)	
SURFACE CASING CEMENT				12.0		736.0	
Description				Top Depth (ftKB)		Bottom Depth (ftKB)	
PRODUCTION CASING CEMENT				1,818.0		4,250.0	
Description				Top Depth (ftKB)		Bottom Depth (ftKB)	
PRODUCTION CASING CEMENT				4,250.0		6,703.2	
Description				Top Depth (ftKB)		Bottom Depth (ftKB)	
Dump Bail				6,236.0		6,262.0	
Description				Top Depth (ftKB)		Bottom Depth (ftKB)	
Balance Plug				1,970.0		2,300.0	
Description				Top Depth (ftKB)		Bottom Depth (ftKB)	
Balance Plug				936.0		986.0	
Description				Top Depth (ftKB)		Bottom Depth (ftKB)	
Shoe Plug				12.0		936.0	
Tubing Strings							
Tubing Description	Run Date	String...	ID (in)	Wt (lb/ft)	Grade	Len (ft)	Set De...
Tubing - Production	5/23/2011	2 3/8	2.00	4.70	J-55	6,546.00	
Tubing Description	Run Date	String...	ID (in)	Wt (lb/ft)	Grade	Len (ft)	Set De...
Tubing - Production	8/3/2011	2 3/8	2.00	4.70	J-55	6,545.03	
Other In Hole							
Run Date	Des			OD (in)	Top (ftKB)	Btm (ftKB)	
6/6/2017	Cast Iron Bridge Plug			3.99	6,262.0	6,267.0	
Logs							
Date	Type			Top, MD (ftKB)		Btm, MD (ftKB)	
11/2/2007	COMPENSATED DENSITY			2,550.0		6,694.0	
11/2/2007	INDUCTION			2,550.0		6,694.0	
11/13/2007	CEMENT BOND			1,600.0		6,640.0	

**Well Name: 70 RANCH USX BB23-02**

VERTICAL - ORIGINAL HOLE, 9/25/2017 5:21:50 PM



Perforation Data					
Linked Zone	Bnch/St g	Sum of Entered Shot Total	Top (ftKB)	Btm (ftKB)	Date
NIOBRARA, ORIGINAL HOLE		56	6,312.00	6,326.00	12/13/2007
NIOBRARA, ORIGINAL HOLE		64	6,392.00	6,408.00	12/13/2007
CODELL, ORIGINAL HOLE		48	6,568.00	6,580.00	11/13/2007
<b>Total (Sum)</b>		<b>168</b>			

Stimulation Intervals		
Start Date 12/13/2007	Primary Job Type DRILLING/COMPLETION - ORIGINAL	
Technical Result	Tech Result Details	Tech Result Note
Comment		
Start Date 12/13/2007	Primary Job Type DRILLING/COMPLETION - ORIGINAL	
Technical Result	Tech Result Details	Tech Result Note
Comment		