



December 17, 2014

Mr. Michael Gardner  
WPX Environmental Manager North West  
WPX Energy Rocky Mountain LLC  
1058 County Road 215  
Parachute, Colorado 81635

**RE: TR 11-1-698 Drill Pad Baseline Water Quality Evaluation**

Dear Mr. Gardner,

Western Water & Land, Inc. (WWL) has completed a hydrologic Water Source evaluation for the WPX Energy Rocky Mountain LLC (WPX) TR 11-1-698 Drill Pad in accordance with Colorado Oil and Gas Conservation Commission (COGCC) Rule 609. Drill Pad TR 11-1-698 is located in NW<sup>1</sup>/<sub>4</sub>, SW<sup>1</sup>/<sub>4</sub>, Section 1, Township 6 S, Range 98 W, 6<sup>th</sup> P.M. The evaluation considered all Water Sources as defined in Rule 609 within a 0.5-mile radius of the referenced drill pad. Water Sources located on the basis of section quarters were included in the evaluation if any portion of the section quarter(s) lies within the 0.5-mile radius area. A preliminary screening of the Water Sources was completed to identify the sources considered to be potentially available for baseline sampling pending results of the owner questionnaire, consent of the structure owners, and field inspections to verify sampling feasibility. Each potentially Available Water Source was then evaluated to identify the preferred sources for the baseline program. If the resulting number of potentially available sources was four or less, all of the sources were included in the list of preferred sources. If more than four sources were potentially available, the sources were prioritized based on WWL's hydrologic knowledge of the region, general hydrologic rationale, and in accordance with the guidelines specified in Rule 609.

**Water Sources**

Water Sources as defined in Rule 609 include Colorado Division of Water Resources (DWR) registered water wells (water wells with existing valid well permits), permitted or adjudicated springs, and monitoring wells installed for baseline sampling and monitoring under COGCC Rules 318A.e(4), 608, or 609. Water Sources located within a 0.5-mile radius of the TR 11-1-698 Drill Pad are shown in Figure 1. Well permit files and water right files, where applicable, are included for preferred Water Sources in Attachment A. Structure owners are identified as reported in DWR databases. Monitoring Hole permits (MH designation), and abandoned, canceled, denied, or expired permits of any type are not shown in Figure 1 within the 0.5 mile radius unless otherwise described in this report. Similarly, water right decrees that are shown as having a non-existent or unusable structure in the state database may not be shown as a viable water source in Figure 1. No Water Sources were identified to fall within the 0.5-mile radius area of Drill Pad TR 11-1-698.

If you have any questions or concerns, please contact me at (970) 242-0170.

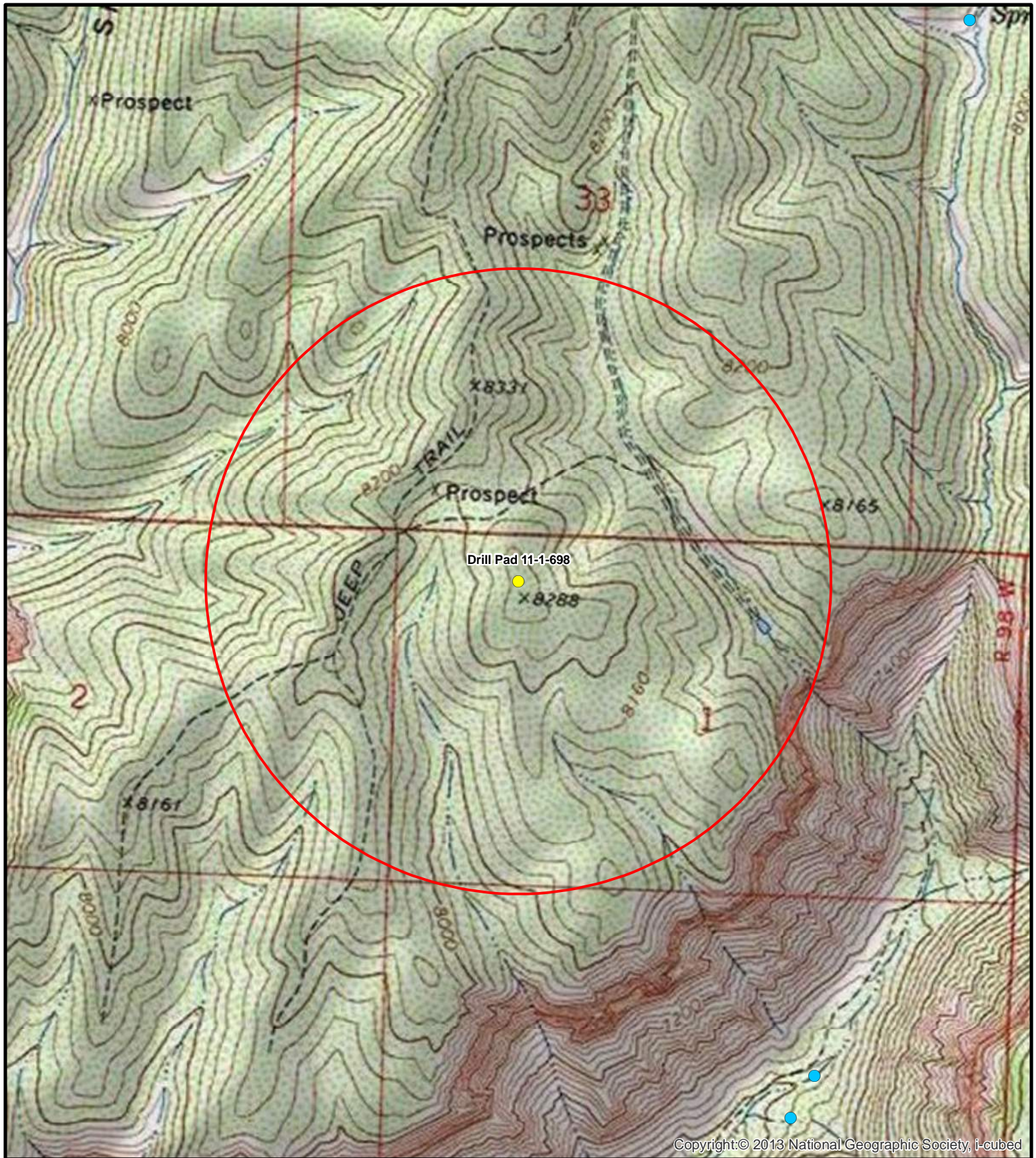
Sincerely,

Mr. Michael Gardner  
December 17, 2014  
Page 2

A handwritten signature in black ink, appearing to read "Bruce D. Smith". The signature is fluid and cursive, with the first name "Bruce" being more legible than the last name "Smith".

Bruce D. Smith  
Principal Hydrogeologist  
WESTERN WATER & LAND, INC.

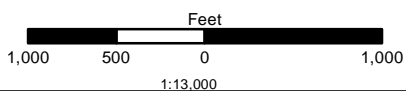
Attachment



Copyright © 2013 National Geographic Society, i-cubed

### Legend

- Decree
- Constructed well
- Outside permits or decrees
- Drill Pad TR 11-1-698
- 0.5-Mile radius evaluation area
- Well completion status unknown



**Figure 1: Drill Pad TR 11-1-698**  
**0.5 Mile Radius Water Source Evaluation**  
**NW1/4, SW1/4, S1, T6S, R98W, 6 PM**

Garfield County, Colorado  
 WPX Energy Rocky Mountain LLC

Basemap Source: Esri ArcGIS Online



Western Water & Land, Inc.  
 Applications in Earth Science