



Great Western Operating
Company, LLC
1801 Broadway, Suite 500
Denver, CO 80202

303.398.0302
866.742.1784 Fax
info@gwogco.com
www.gwogco.com

September 8, 2017

Colorado Oil and Gas Conservation Commission
1120 Lincoln Street, Suite 801
Denver, CO 80203

RE: Proposed Wellbore Spacing Unit
B-Farm LD 18-392HN
Niobrara New Drill
NENW Sec. 7, Township 1S, Range 67W
Adams County, Colorado

Dear Director Lepore,

Great Western Operating Company, LLC (Great Western) is planning to drill the above captioned well in accordance with the provisions of Colorado Oil and Gas Conservation Commission (COGCC) Rule 318A.e.

Great Western's proposed wellbore spacing unit consists of:

Township 1 South, Range 67 West (Adams County):
Section 7: W2,W2E2
Section 18: W2,W2E2
Section 19: N2NW/4, NWNE

Total Acres: 1080

The 30 day notification time period has passed and we have not yet received any objections to such well locations or proposed spacing unit, therefore Great Western hereby requests the Director to approve the above mentioned well. Great Western respectfully requests the COGCC review the enclosed map illustrating the proposed wellbore spacing unit.

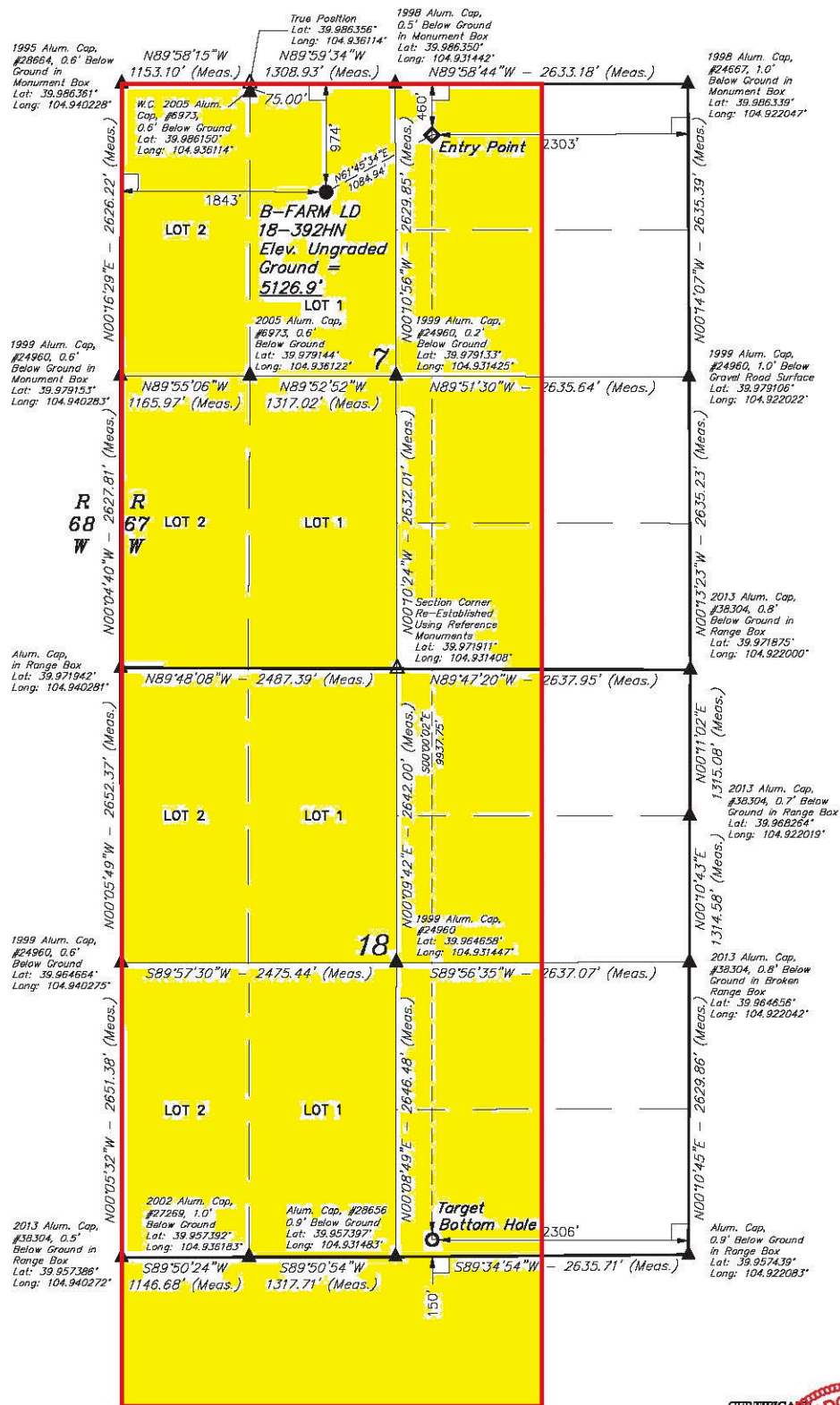
Respectfully,

Christi Ng

Christi Ng
Senior Regulatory Analyst
Great Western Operating Company, LLC

T1S, R67W, 6th P.M.

- 1995 Alum. Cap.
#28664, 0.6' Below
Ground in
Monument Box
Lat: 39.986361°
Long: 104.940228°



CERTIFICATE
THIS IS TO CERTIFY THAT THE ABOVE WAS PAID FOR THE NOTES OF ACTUAL SURVEYS MADE BY ME OR UNDER MY SUPERVISION, AND THAT THE SAME ARE TRUE AND CORRECT TO THE BEST OF MY KNOWLEDGE AND BELIEF.



REV: 3 10-17-16 M.F.D. (SL, EP, TBH & NAME CHANGE)

GREAT WESTERN OPERATING COMPANY

**B-FARM LD 18-392HN
NE 1/4 NW 1/4, SECTION 7, T1S, R67W, 6th P.M.
ADAMS COUNTY, COLORADO**

SURVEYED BY	DALLAS NIELSEN, G.W.	03-24-16	SCALE
DRAWN BY	M.F.D.	03-31-16	1" = 1000'

WELL LOCATION PLAT

PDOP = 1.5



NAD 83 (SURFACE LOCATION)	NAD 83 (ENTRY POINT)	NAD 83 (TARGET BOTTOM HOLE)
LATITUDE = 39°59'01.25" (39.983681)	LATITUDE = 39°59'06.31" (39.985086)	LATITUDE = 39°57'28.13" (39.957814)
LONGITUDE = 104°56'01.22" (104.933672)	LONGITUDE = 104°53'48.94" (104.930261)	LONGITUDE = 104°55'49.10" (104.930306)
NAD 27 (SURFACE LOCATION)	NAD 27 (ENTRY POINT)	NAD 27 (TARGET BOTTOM HOLE)
LATITUDE = 39°59'01.31" (39.983697)	LATITUDE = 39°59'06.37" (39.985103)	LATITUDE = 39°57'28.18" (39.957828)
LONGITUDE = 104°55'59.30" (104.933139)	LONGITUDE = 104°53'47.02" (104.929728)	LONGITUDE = 104°55'47.18" (104.929772)

BASIS OF BEARINGS

BASIS OF BEARINGS

BASIS OF BEARINGS IS A G.P.S. OBSERVATION

BASIS OF ELEVATION

BASIS OF ELEVATION
USGS COOPERATIVE BASE NETWORK CONTROL STATION, DESIGNATION "JR 53 5026".
NCHS DATA SHEET LISTS THE NAVD 88 ELEVATION AS BEING 5028 FEET.



UELS, LLC
Corporate Office * 85 South 200 East
Vernal, UT 84078 * (435) 789-1017