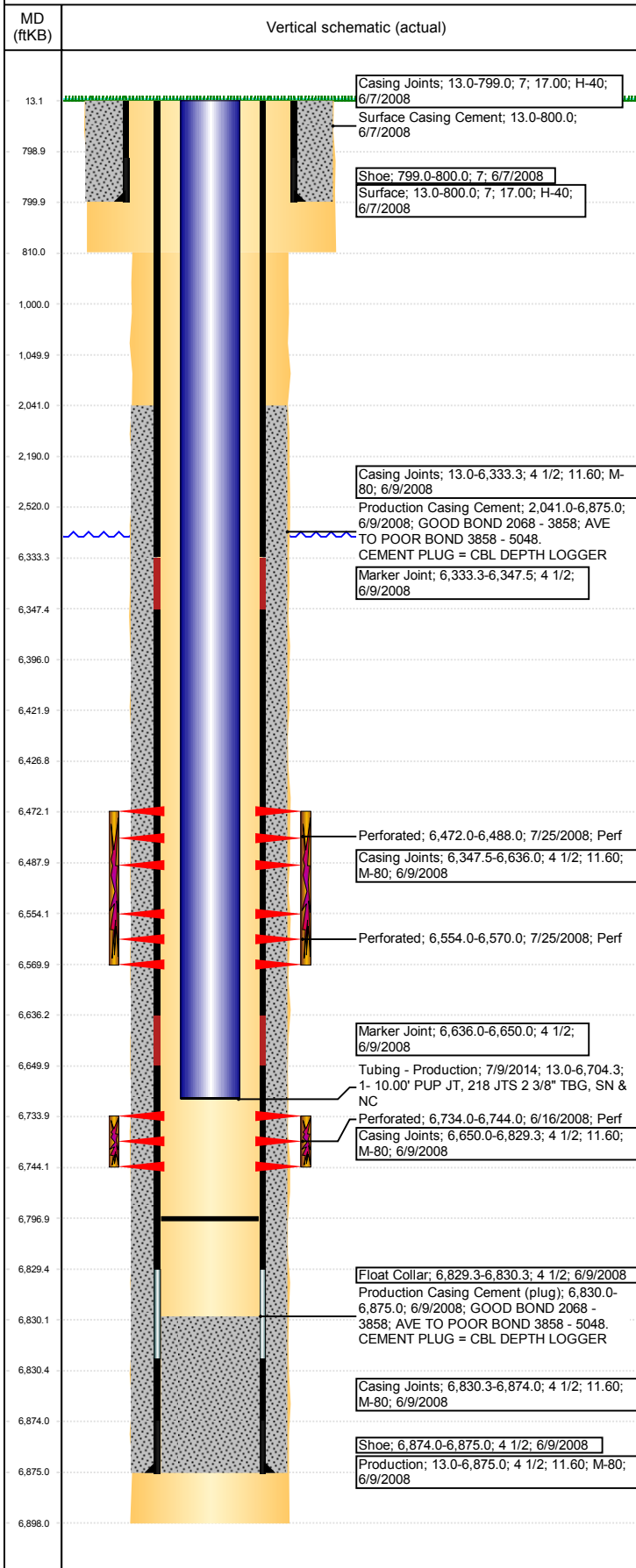


**Well Name: WELLS RANCH USX AA35-08**

VERTICAL - ORIGINAL HOLE, 9/19/2017 3:22:24 PM



## Well Header

API 05-123-25883	Business Unit DJ BASIN	District 15	Well Config VERTICAL
Original KB Elevation (ft) 4,784	KB - GL / MSL (ftKB) 13.00	Spud Date 6/7/2008	P & A Date

## Comment

LOGGING COMPANIES: THIS WELL HAS A PARTNER - SEE SPECIAL INSTRUCTIONS BELOW!!

## Directions To Well

From the intersection of WCR 68 and WCR 67, go East 2/10ths of a mile, then South 1.75 miles, then East 1.25 miles, then South 5/10ths of a mile, then Southeast into location

## Current PBTD (mKB)

ORIGINAL HOLE - 6,797.0

## Surface Location (Congressional)

Quarter 3 SE	Quarter 4 NE	Section 35	Township 6	Twnshp N/S Dir N	Range 63	Range E/W Dir W
-----------------	-----------------	---------------	---------------	---------------------	-------------	--------------------

## Bottom Hole Location

North-South Distance (ft)	From N or S Line	East-West Distance (ft)	From E or W Line
---------------------------	------------------	-------------------------	------------------

## Plug Back Total Depths

Date	Depth (ftKB)	Method	Com
6/9/2008	6,830.0	CASING TALLY	FLOAT COLLAR
6/16/2008	6,807.0	CASED HOLE LOG	CBL DEPTH LOGGER
8/27/2008	6,814.0	TUBING TALLY	DRILL UP CIFT P W/ SHOE AND CHASE DOWN TO...
7/8/2014	6,797.0	TAG	DRILL COMP BP & PUSH TO BOTTOM 6797'

## Wellbore Sections

Section Des	Size (in)	Act Top, MD (ftKB)	Act Btm, MD (ftKB)
SURFACE	9 7/8	13	810
PRODUCTION	6 1/4	810	6,898

## Zone Statuses

Zone Name	Status Date	Status	Fluid Type	Job	Prod Method
NIOBRARA	7/28/2008	PR	Water	DRILLING/COMPLETION - ORIGINAL, 6/6/2008...	Flowing
NIOBRARA	2/16/2010	PR			
CODELL	7/28/2008	PR	Water	DRILLING/COMPLETION - ORIGINAL, 6/6/2008...	Flowing
CODELL	2/16/2010	PR			
CODELL	12/7/2015	PR			
CODELL	4/13/2016	PR			

## Casing Strings

Csg Des	Run Date	OD (in)	Wt/Len (lb/ft)	Grade	Top, MD (ftKB)	MD (ftKB)
Surface	6/7/2008	7	17.00	H-40	13.0	800.0
Production	6/9/2008	4 1/2	11.60	M-80	13.0	6,875.0

## Cement

Des	Top (ftKB)	Btm (ftKB)
Surface Casing Cement	13.0	800.0
Production Casing Cement	2,041.0	6,875.0

## Tubing Components

Item Des	OD (in)	Wt (lb/ft)	Grade	Jts	Len (ft)
----------	---------	------------	-------	-----	----------

## Perforation Data

Linked Zone	Bnch/Stg	Sum of Entered Shot Total	Top (ftKB)	Btm (ftKB)	Date
NIOBRARA, ORIGINAL HOLE	A	64	6,472.00	6,488.00	7/25/2008
NIOBRARA, ORIGINAL HOLE	B	64	6,554.00	6,570.00	7/25/2008
CODELL, ORIGINAL HOLE		40	6,734.00	6,744.00	6/16/2008

## Total (Sum)

168

## Other In Hole

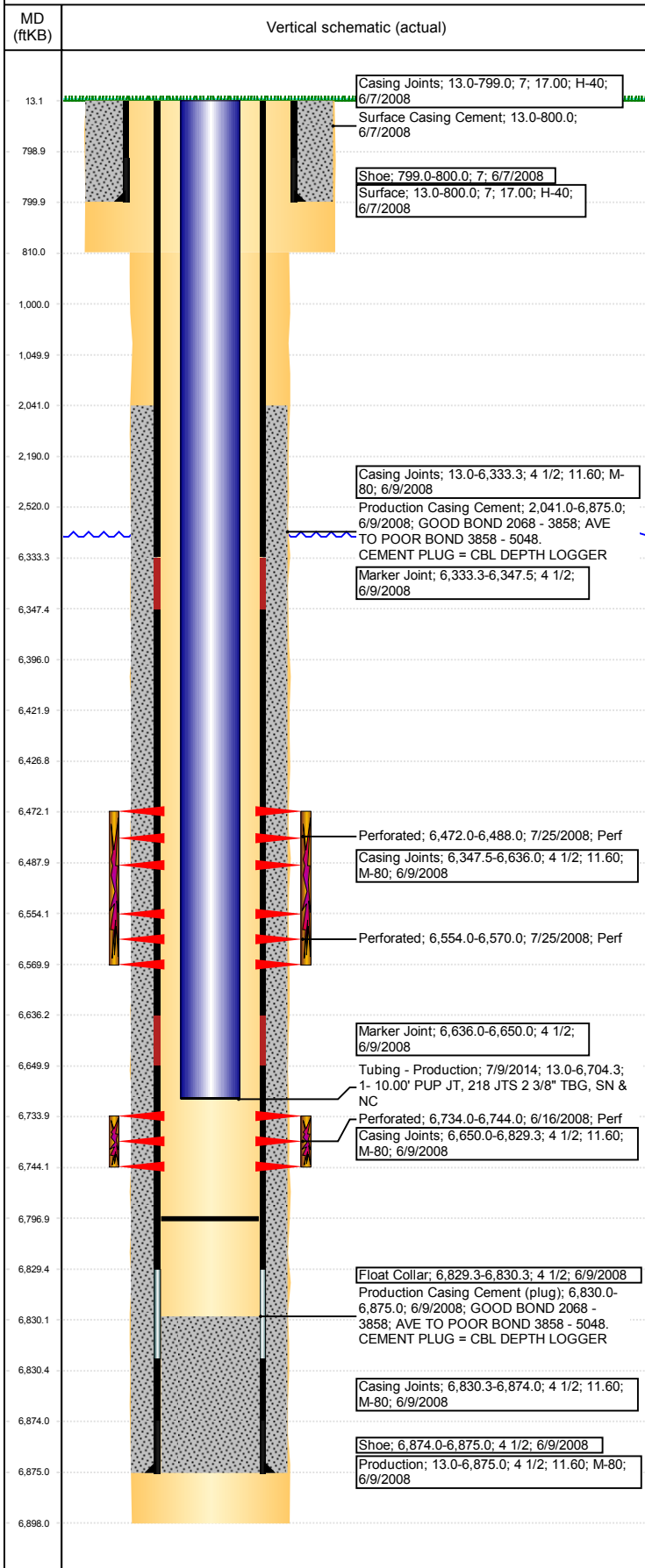
Run Date	Des	OD (in)	Top (ftKB)	Btm (ftKB)
8/15/2017	Cast Iron Bridge Plug	3.99	6,422.0	6,427.0

## Logs

Date	Type	Top, MD (ftKB)	Btm, MD (ftKB)
6/9/2008	Caliper/Comp. Density/Neutron/GR/SP/ML	2,675.0	6,878.0
6/9/2008	DIL/GR/SP/Caliper	800.0	6,898.0
6/16/2008	CBL/CCL/GR	1,814.0	6,805.0
8/1/2011	GYRO	13.0	6,700.0

**Well Name: WELLS RANCH USX AA35-08**

VERTICAL - ORIGINAL HOLE, 9/19/2017 3:22:25 PM



Stimulation Intervals			
Bnch/Stg	Start Date	Primary Job Type	
	7/25/2008	DRILLING/COMPLETION - ORIGINAL	
Comment			
CODELL:REVERSE STEP RATE RESULTS PO 15 NWB 263PSI WB 272PSI PPF 164PSI FOR A TOTAL OF 699PSI OF FRICTION PRE JOB 5 MINUTE OF 2447 RAISED TREATMENT RATE TO 22 BPM TREATMENT WENT WELL HAD SOME ISSUES WITH THE IFS FREEZING UP WHILE PUMPING AVG VISC 28.7 CPS AVG TEMP 74.5F AVG PH 10.18 POST JOB 5 MINUTE OF 2492 PSI			
Volume Slurry Total (gal)			
174,174.01			
Treat Pressure Avg (psi)	Treat Pressure Max (psi)	Slurry Rate Avg (bbl/min)	Slurry Rate Max (bbl/min)
2,971.0	3,590.0	22.8	23.0
Bnch/Stg	Start Date	Primary Job Type	
	7/25/2008	DRILLING/COMPLETION - ORIGINAL	
Comment			
NIOBRARA: WATER WAS TIGHT RAN 1PSA 2 PSA AND THE FIRST 3 PSA STAGES 0.1 PSA HIGH TREATMENT WENT WELL NO ISSUES TO REPORT AVG VISC 23.6 CPS AVG TEMP 75.4F AVG PH 10.22 POST JOB 5 MINUTE 2755 PSI			
Volume Slurry Total (gal)			
184,044.00			
Treat Pressure Avg (psi)	Treat Pressure Max (psi)	Slurry Rate Avg (bbl/min)	Slurry Rate Max (bbl/min)
4,011.0	4,683.0	56.5	59.2