

LWD MEMORY LOG



Gamma Ray

Scale: Company: Noble Energy

1:240 TVD Well: Wells Ranch AF07-659

Depth Reference: Field: Weld County(Noble NAD 83 GRID)

Driller's Depth County: Weld County State: Colorado

Status: Surface Location: Other Services:

Final Print Latitude: 040° 24' 54.612" N

Longitude: 104° 20' 18.096" W

API No: 05-123-44246-00 UTM: N/A

Job ID: 8645461 SEC: 8

TWN: 5N RGE: 62W

Permanent Datum (P.D.): Ground Level Elevation: 4705.00 ft

Log Measured From: Rig Floor Above P.D. 30.00 ft

KB: N/A

DF: 4735.00 ft

GL: 4705.00 ft

Dates Interval Logged Magnetic Field Reference

Date From: 2017-07-17 Top: (ft) 1940.00

Date To: 2017-07-18 Bottom: (ft) 6512.00

Spud Date: 2017-07-16

Azi Reference North: Grid Dip Angle: (deg) 67.14

Total Magnetic Field Strength: (nT) 52286

Mag to Reference North Correction: (deg) 7.13 E

Borehole Record

Casing Record

Hole Size (in)	From (ft)	To (ft)	Size (in)	Weight (lb/ft)	From (ft)	To (ft)
----------------	-----------	---------	-----------	----------------	-----------	---------

13.500	0.00	1940.00	9.625	36.00	30.00	1926.00
--------	------	---------	-------	-------	-------	---------

8.500	1940.00	16445.00				
-------	---------	----------	--	--	--	--

--	--	--	--	--	--	--

--	--	--	--	--	--	--

--	--	--	--	--	--	--

--	--	--	--	--	--	--

--	--	--	--	--	--	--

Mud Record

Deviation Record

Type	From (ft)	To (ft)	Hole Size (in)	Interval (ft)	Inc Az (Start)	Inc Az (End)
------	-----------	---------	----------------	---------------	------------------	----------------

Oil Based Mud	1940.00	16445.00	8.500	14505.00	0.20 205.81	90.18 268.53
---------------	---------	----------	-------	----------	---------------	----------------

--	--	--	--	--	--	--

--	--	--	--	--	--	--

--	--	--	--	--	--	--

--	--	--	--	--	--	--

--	--	--	--	--	--	--

Acquisition System Software Version Other

Baker Hughes Cadence RT4.1 H&P 517

PlotStudio 4.1.7763.3 Contractor: Helmerich & Payne Drilling Co

District: RMA Unit: D&E

"These interpretations and analyses ("Interpretations") are opinions provided by Baker Hughes Oilfield Operations, Inc ("Baker Hughes"), based upon industry practice, empirical relationships, assumptions and measurements, (many of which may be provided by the customer). The Interpretations are not infallible and may be subject to different opinions. Thus, Baker Hughes does not warrant their accuracy, correctness, or completeness, or that the customer's and/or any third party's reliance on such Interpretations will accomplish any particular results. The customer assumes full responsibility for the use of the Interpretations and for decisions based thereon and the customer agrees to release, defend and indemnify Baker Hughes, its parent, subsidiaries and affiliated or related entities, and subcontractors, together with its and their officers, directors, employees, agents and invitees against, any and all claims, losses, damages, or expenses sustained by the customer or any third party arising out of reliance upon or use of the Interpretations, without regard to the cause(s) thereof, including without limitation any form of negligence on the part of Baker Hughes. Unless other contract terms have been agreed to by the parties, each party's liabilities and obligations shall be governed by Baker Hughes Incorporated's Worldwide Terms and Conditions."

Log Run Summary

Run No	Bit Run No.	Bit Size (in)	Bit Type	Bit Gauge Length (in)	Assembly Type	Logged Interval		Bit Depth Interval		Date / Time		Circ. Hours (h)
						Top	Bottom	From	To	Start Logging	End Logging	
						(ft)	(ft)	(ft)	(ft)			
1	1	8.500	PDC	3.00	AutoTrak Curve	1927.10	16432.10	1940.00	16445.00	2017-07-17 11:02	2017-07-19 19:47	51.67

Crew

Name		Arrive Wellsite	Depart Wellsite	Name		Arrive Wellsite	Depart Wellsite	Name		Arrive Wellsite	Depart Wellsite
Adam Schlenz		2017-07-16	2017-07-20	Alberto Cova		2017-07-16	2017-07-19	Emi Iyalla		2017-07-19	2017-07-20

Mud Properties Record

Date / Time	Run No.	Measured Depth (ft)	Mud Type	Density (ppg)	Viscosity (cP)	pH	Fluid Loss (cm3)	Oil / Water	Source	Total Chlorides (ppm)	K+ (%)
2017-07-17 15:00	1	3328.00	Oil Based Mud	9.1	12	N/A	244.4	74/26	Active Pit	19000	0.00
2017-07-18 04:00	1	6522.00	Oil Based Mud	9.0	12	N/A	25.6	72.5/27.5	Active Pit	20000	0.00
2017-07-18 15:00	1	9651.00	Oil Based Mud	9.2	12	N/A	227.7	74/26	Active Pit	23000	0.00
2017-07-19 04:00	1	12734.00	Oil Based Mud	9.4	11	N/A	165.6	74.5/25.5	Active Pit	23000	0.00
2017-07-19 15:00	1	15210.00	Oil Based Mud	9.4	12	N/A	242.8	85/15	Active Pit	22500	0.00
2017-07-20 04:00	1	16445.00	Oil Based Mud	9.3	12	N/A	123.7	87/13	Active Pit	20000	0.00

Equipment and Service Data

Run No.	Tool	Serial Number	Measurement	Sensor Offset (ft)	Bit Offset (ft)	Max O.D. (in)	Min I.D. (in)
1	ATC_SU	12536524	Near Bit VSS	5.93	6.73	7.000	2.250
1	ATC_SU	12536524	Near Bit Inclination	5.93	6.73	7.000	2.250
1	ATC_MWD	13067101	Gamma (single)	2.75	12.90	7.000	2.250
1	ATC_MWD	13067101	Directional (mag)	12.27	22.42	7.000	2.250

Service and Tool Mnemonics

Mnemonic	Name	Description
ATC_SU	ATC_SU	Auto Trak Curve Steering Unit
ATC_MWD	ATC_MWD	Auto Trak Curve MWD
ATC_LCPM	ATC_LCPM	Auto Trak Curve LCPM

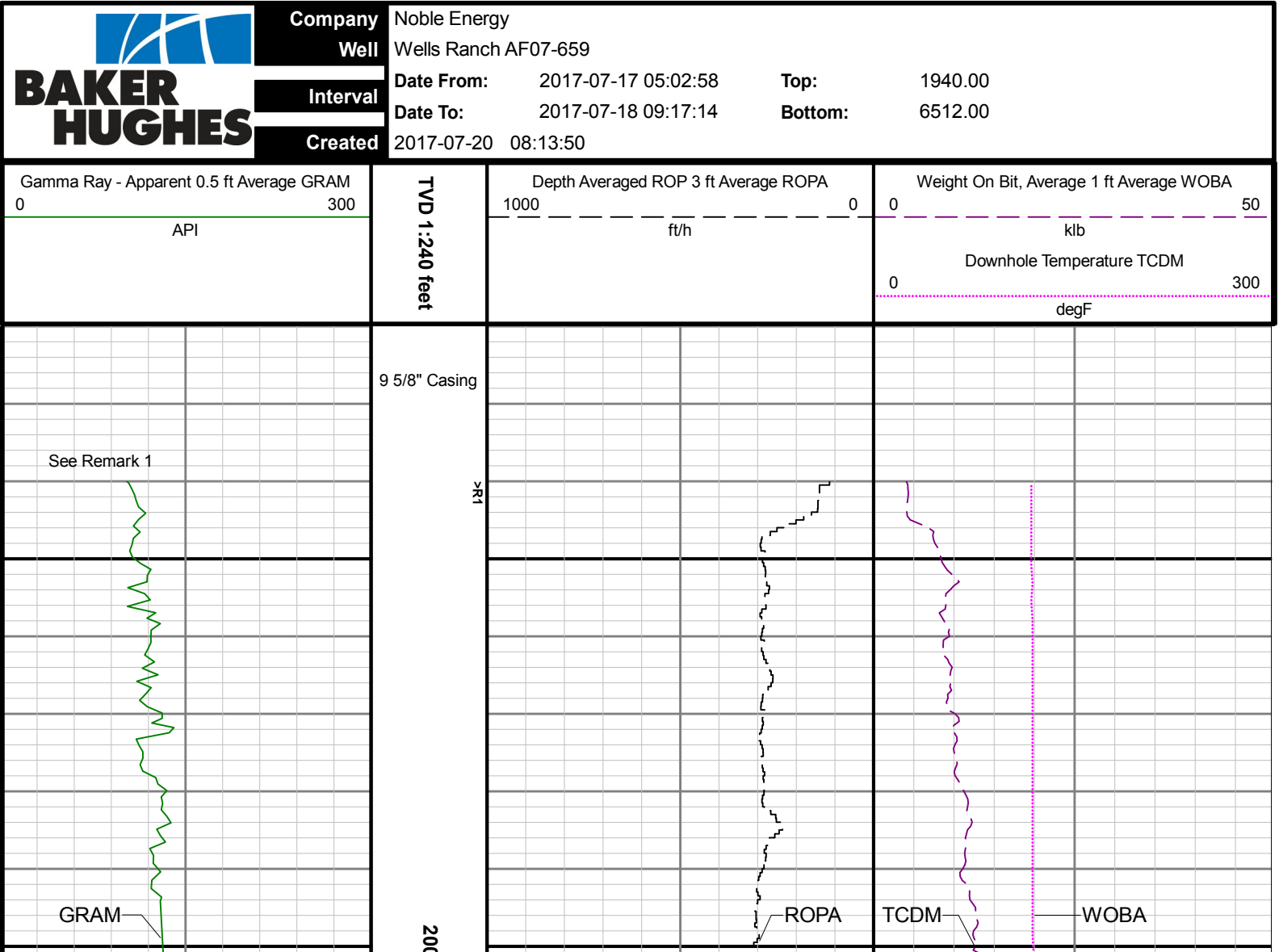
Comments

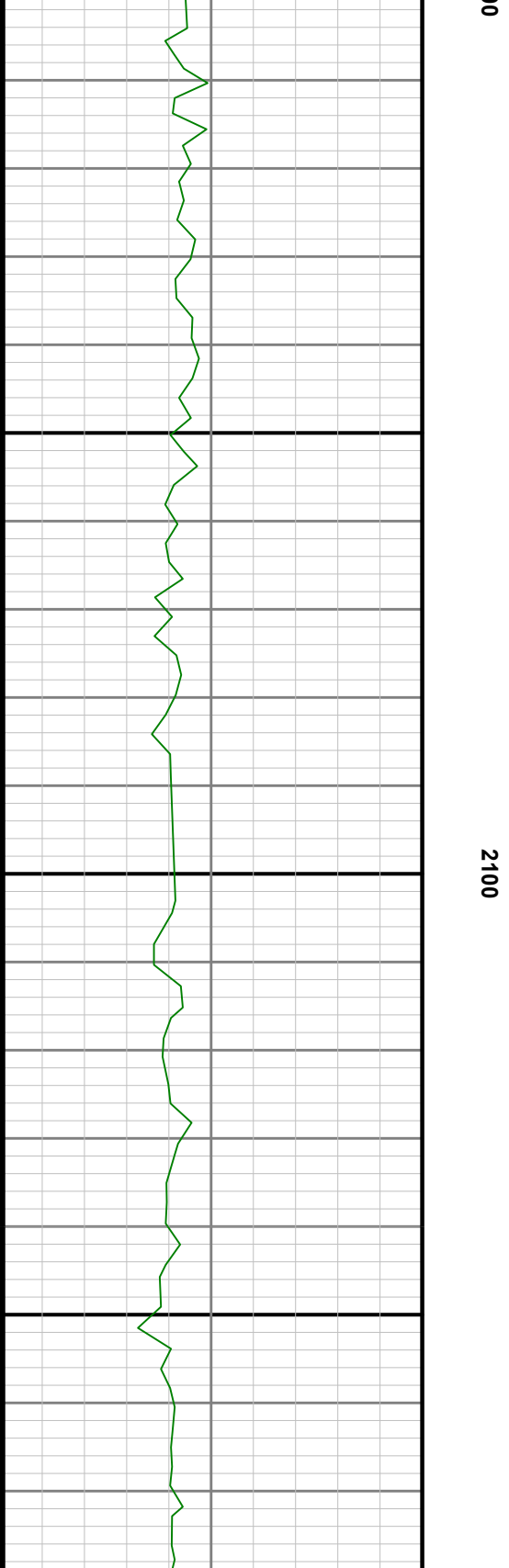
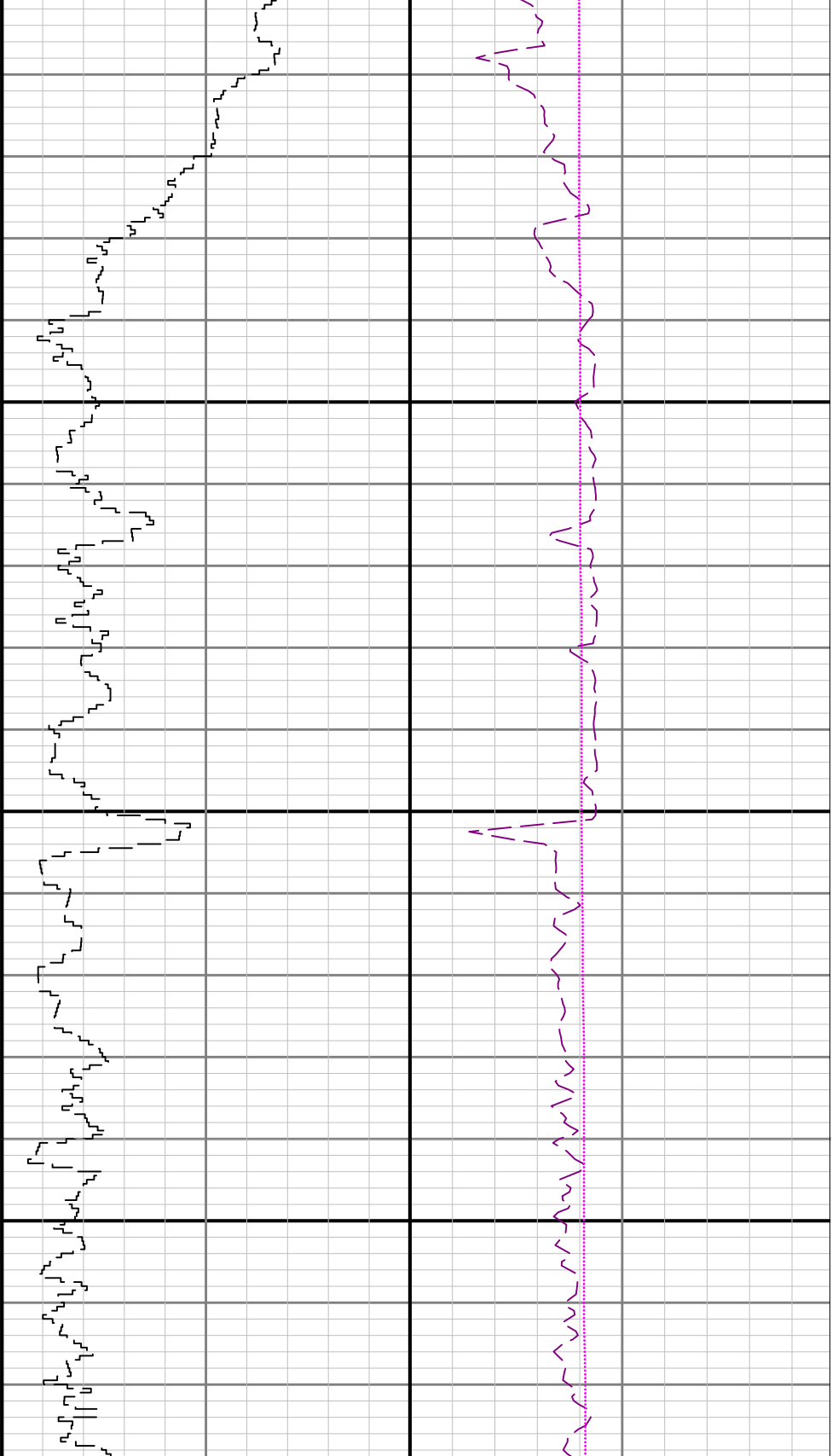
- 1 Depth measurements were obtained from a depth control system not supplied or operated by Baker Hughes. Due to the lack of control by Baker Hughes, depth calibrations and measurements could not be independently verified.
- 2 Baker Hughes LWD run 1 utilized a 6.75 inch NaviGamma (Directional and Gamma Ray) services behind a 8.5 inch bit and rotary steerable assembly from 1940 to 16445 feet MD (1940 to 6495 feet TVD).

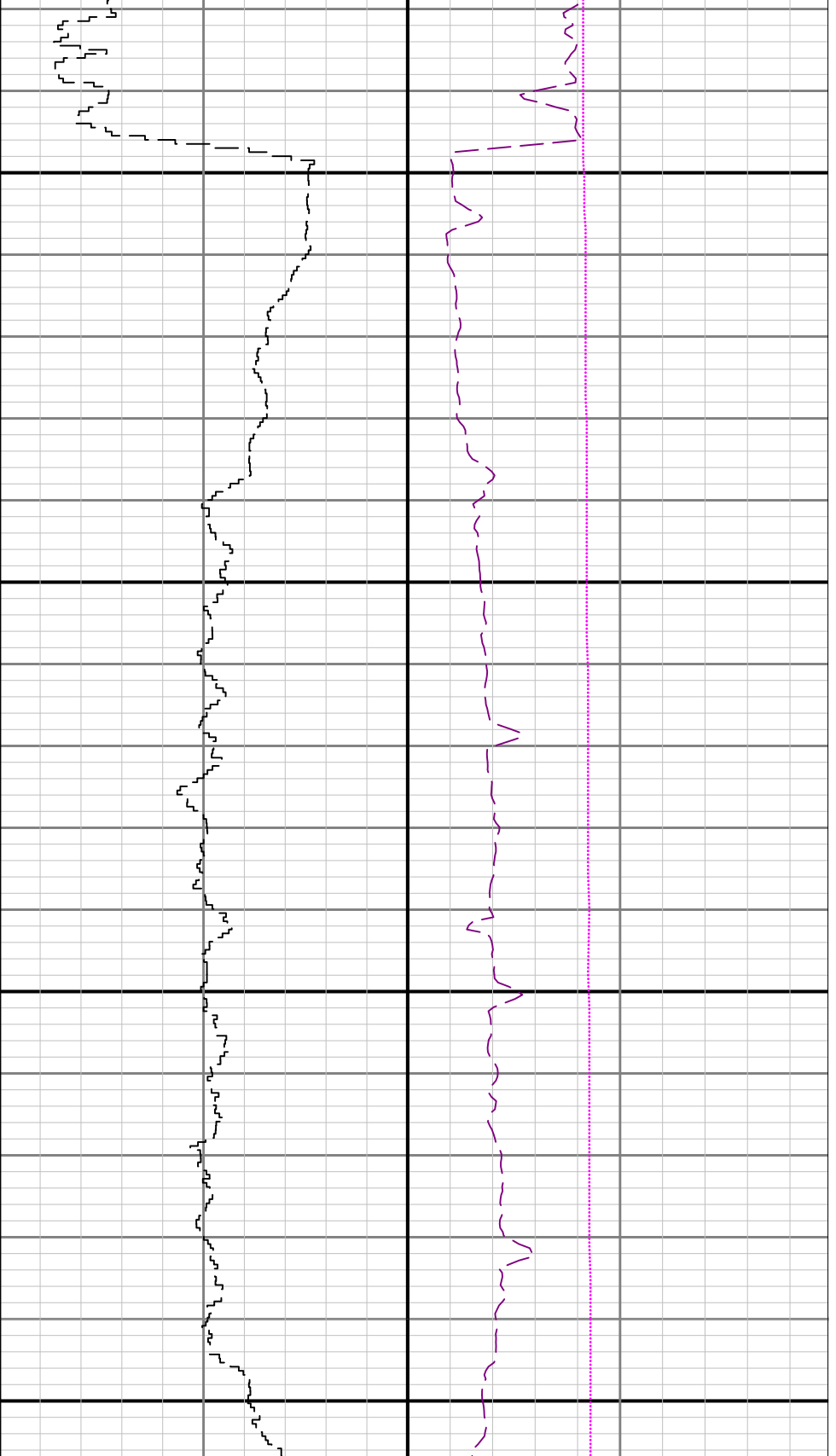
Remarks				
Number	Measured Depth (ft)	Hole Section (in)	Run No.	Remark
1	1940.00	8.500	1	Gamma Ray logging operations began at 1940 feet MD (1940 feet TVD) per customer request.

Curve Mnemonics

Presented Curves	Description	Units
ROPA	Depth Averaged ROP 3 ft Average	ft/h
WOBA	Weight On Bit, Average 1 ft Average	klb
GRAM	OnTrak - Gamma Ray - Apparent - Memory 0.5 ft Average	API
TCDM	Downhole Temperature	degF

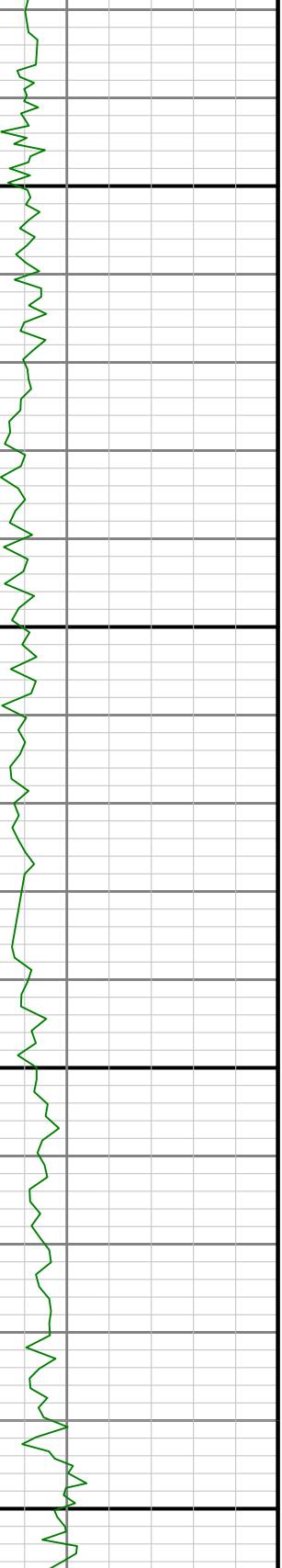
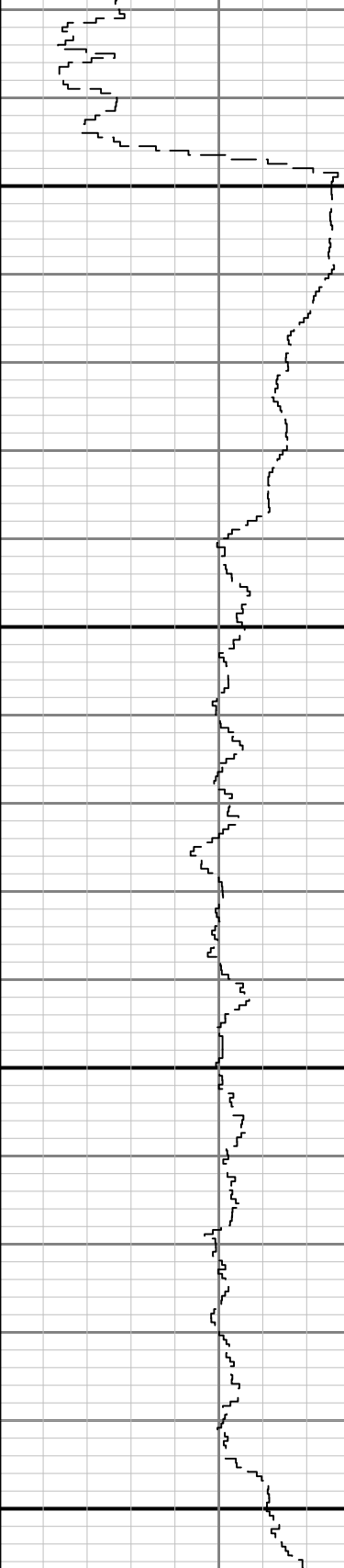


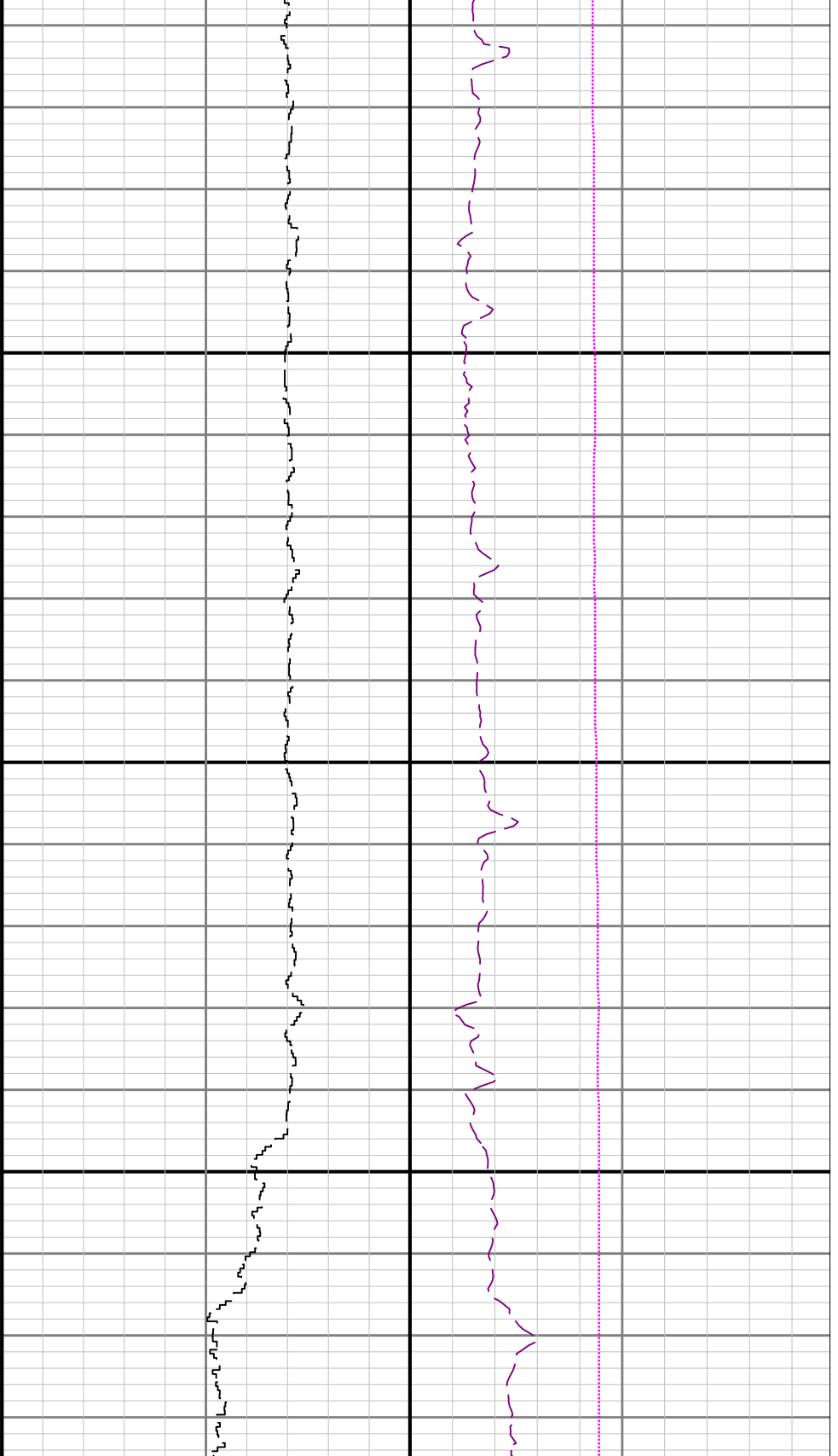




2200

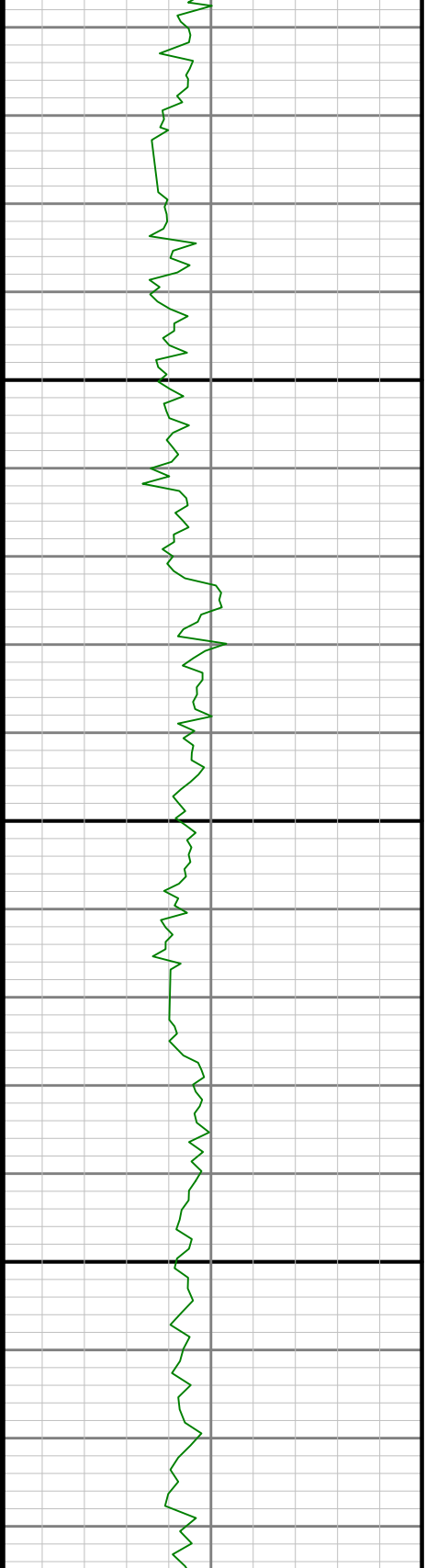
2300

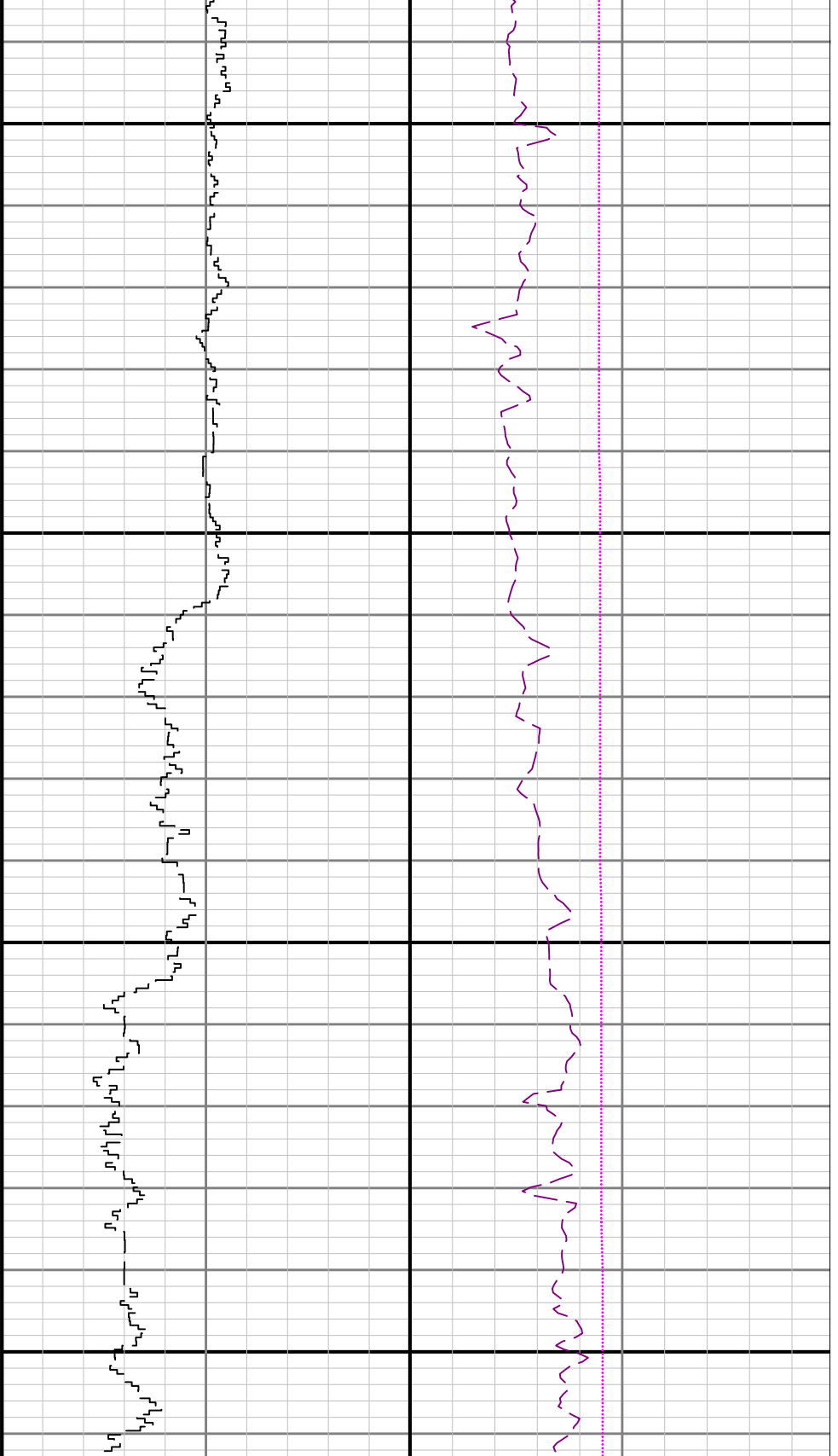




2400

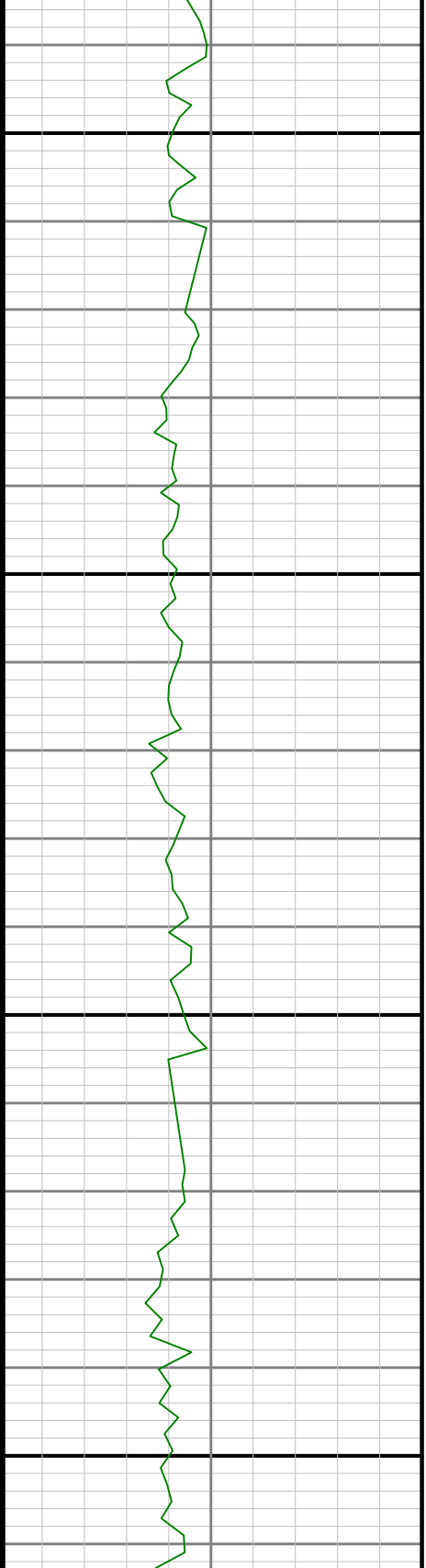
2500

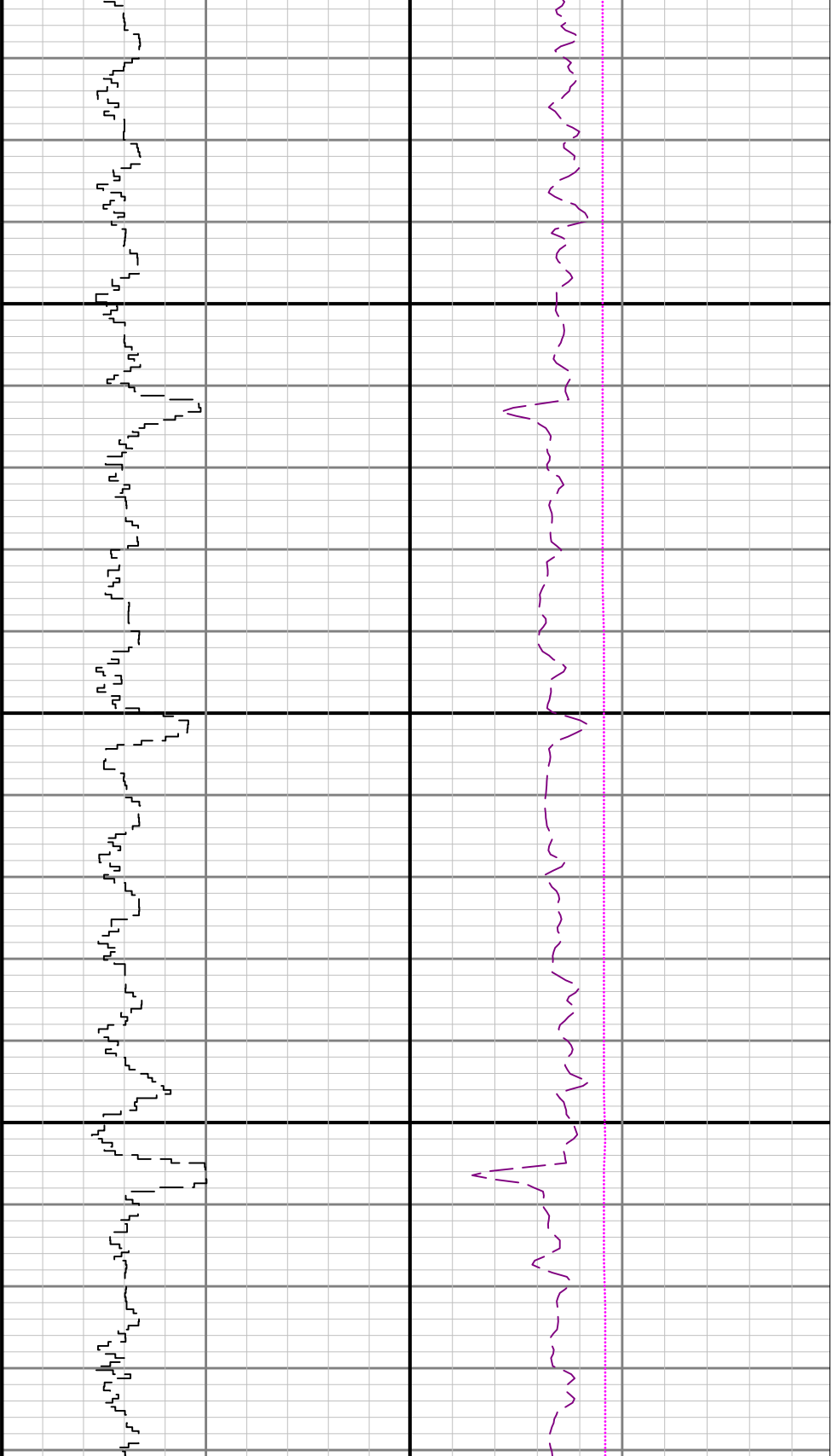




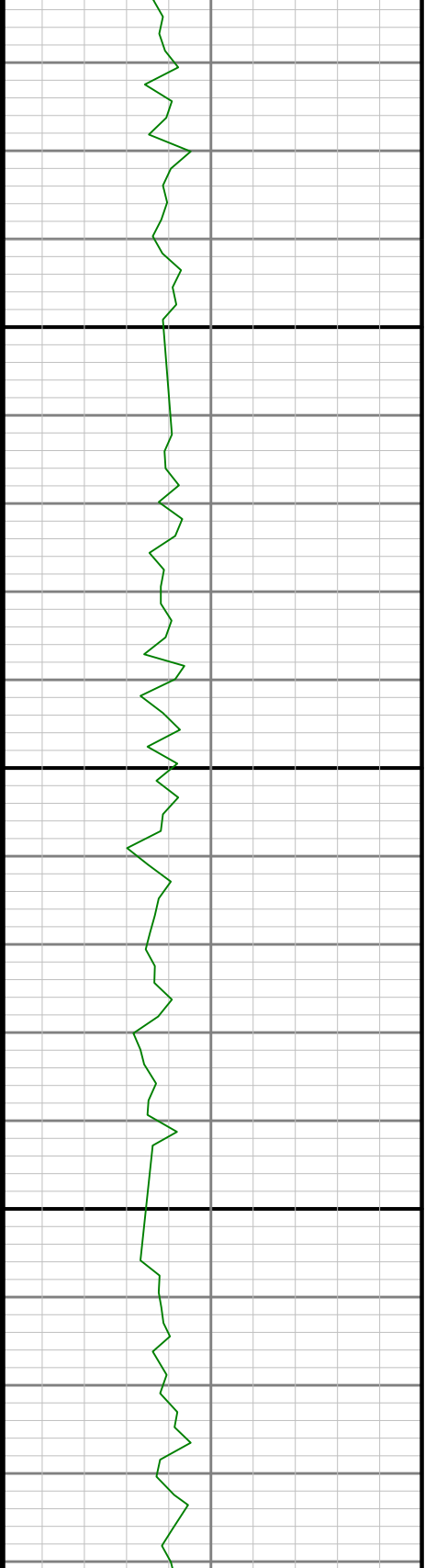
2600

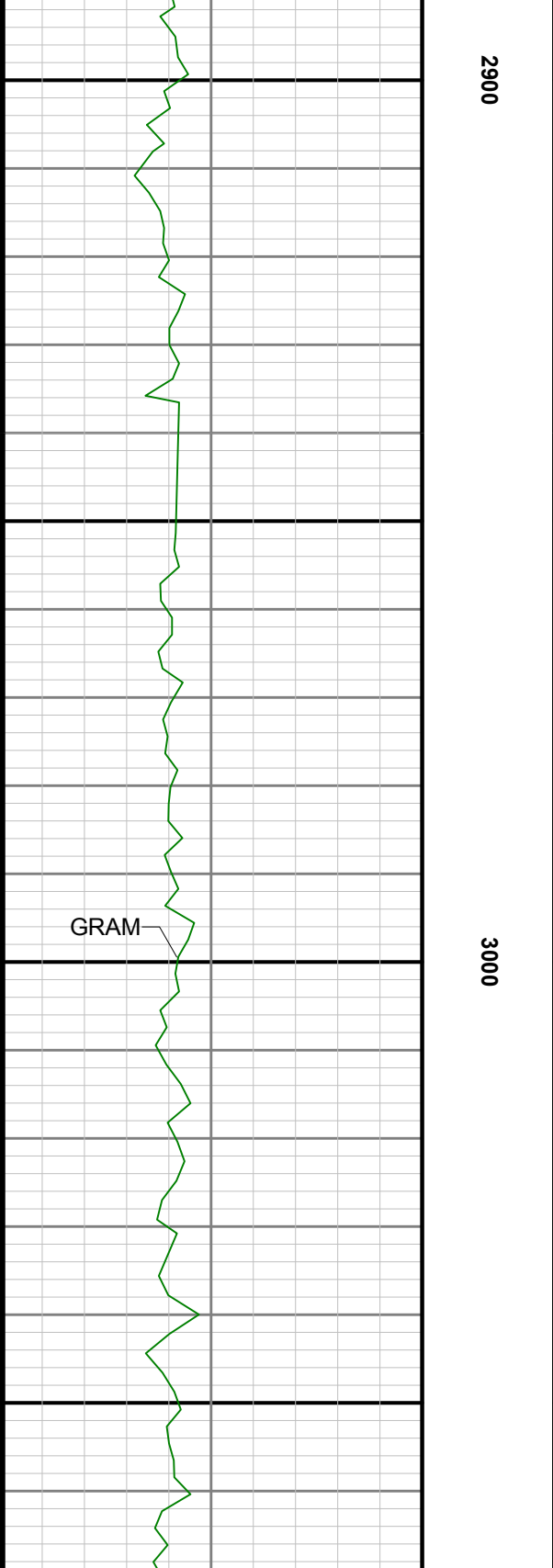
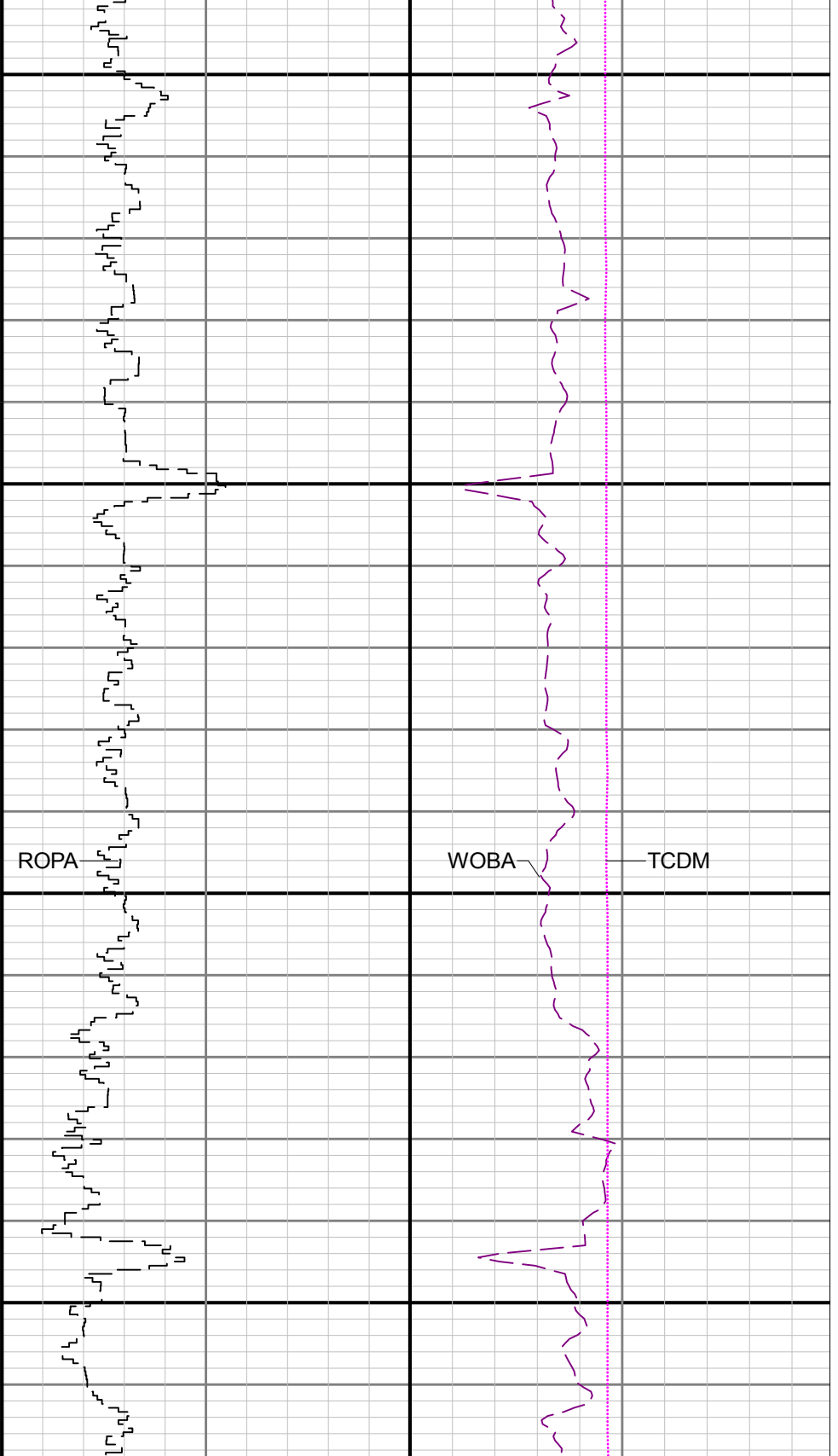
2700

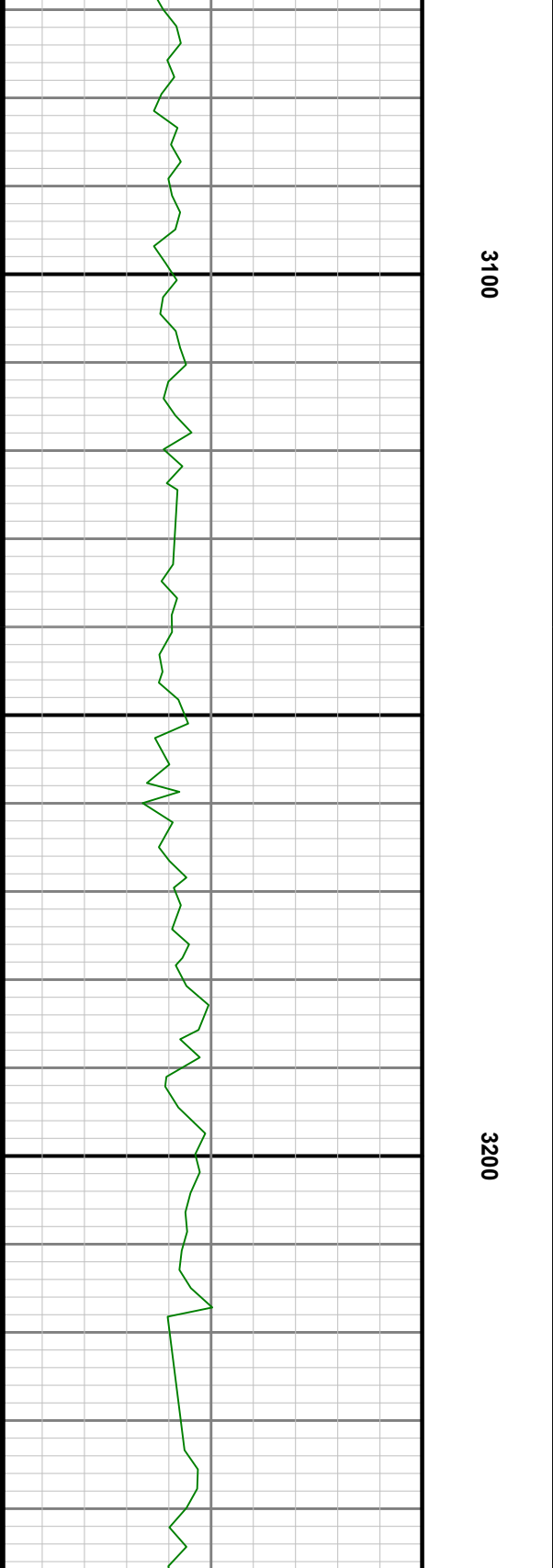
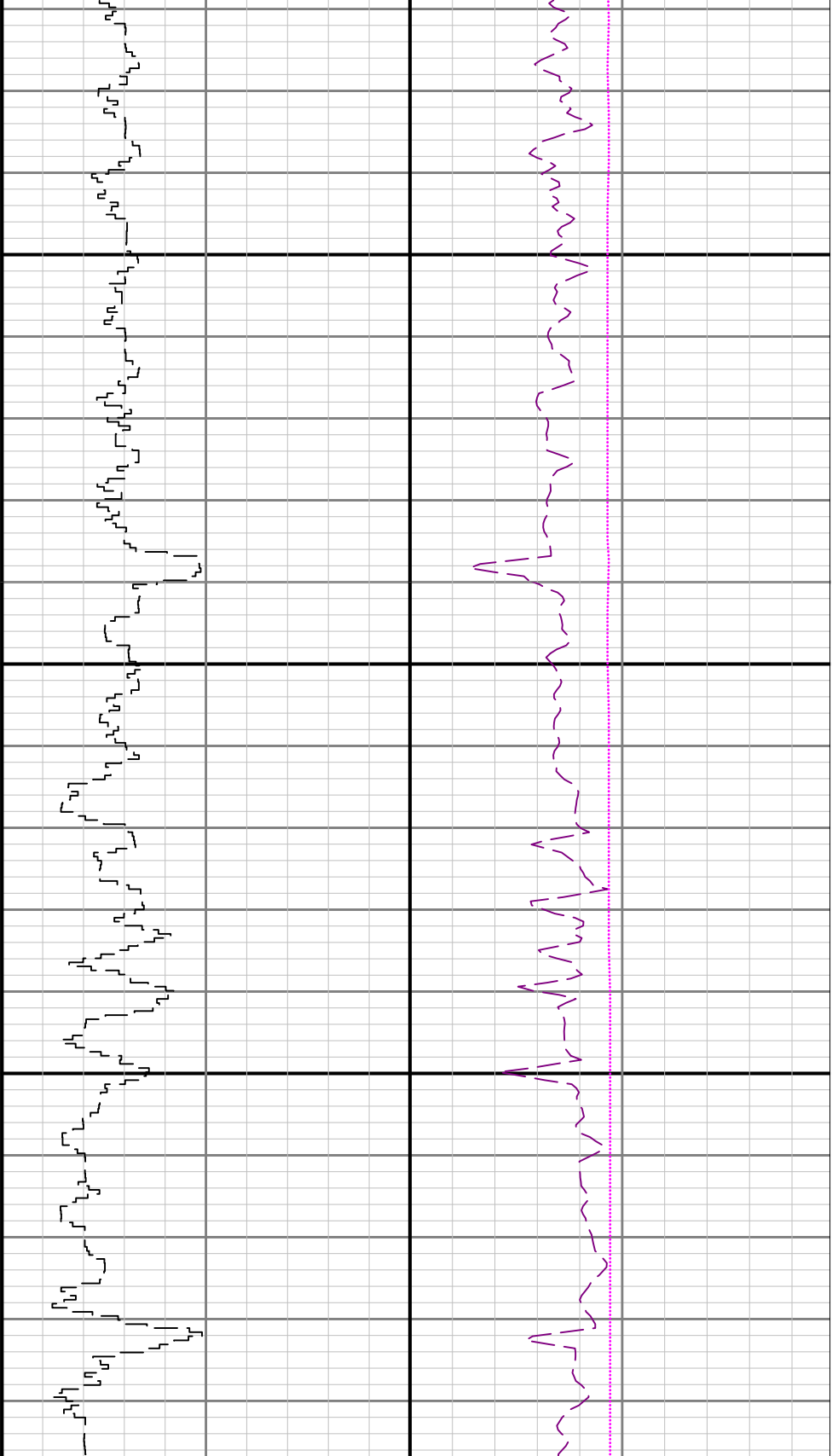


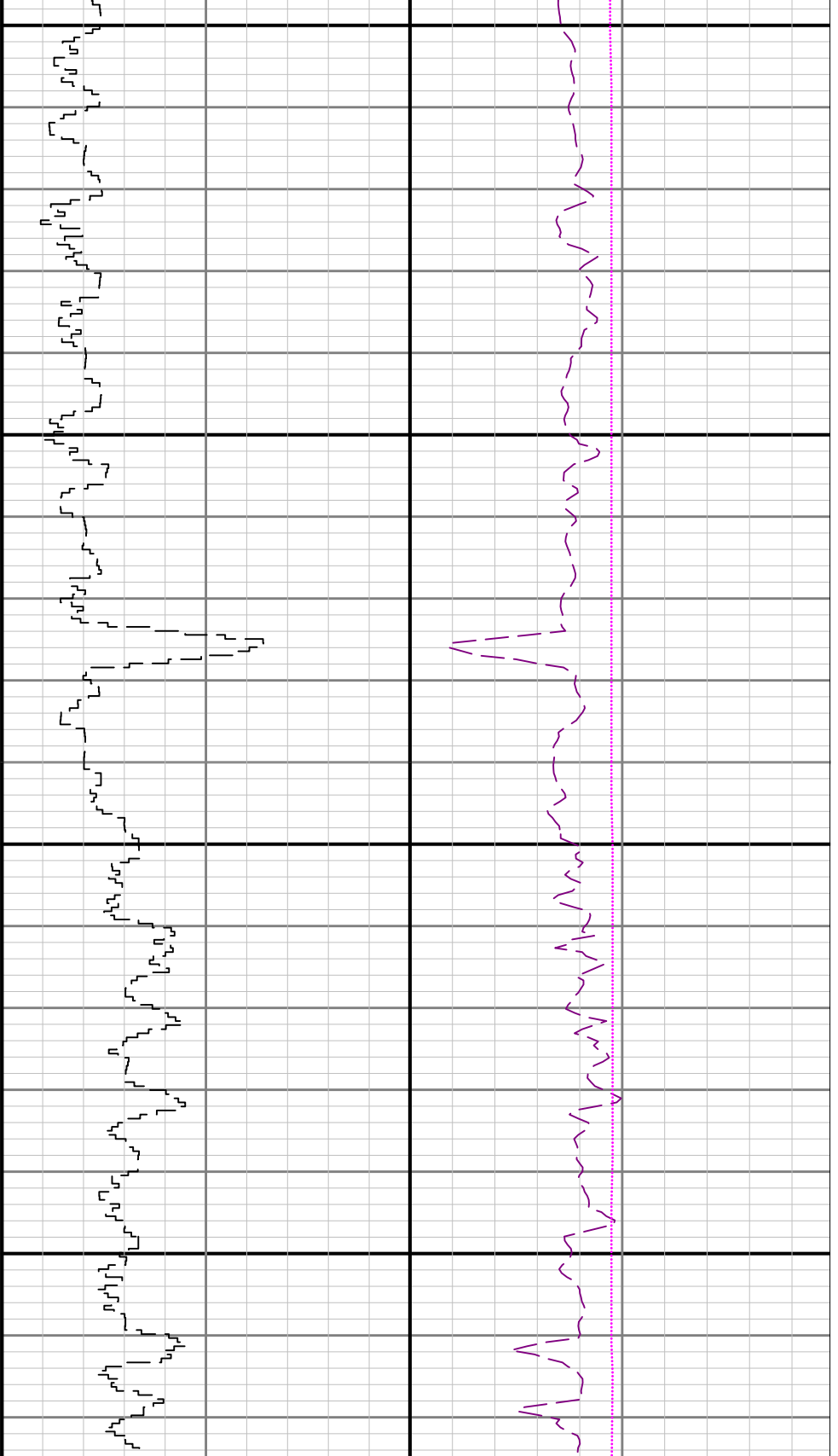


2800



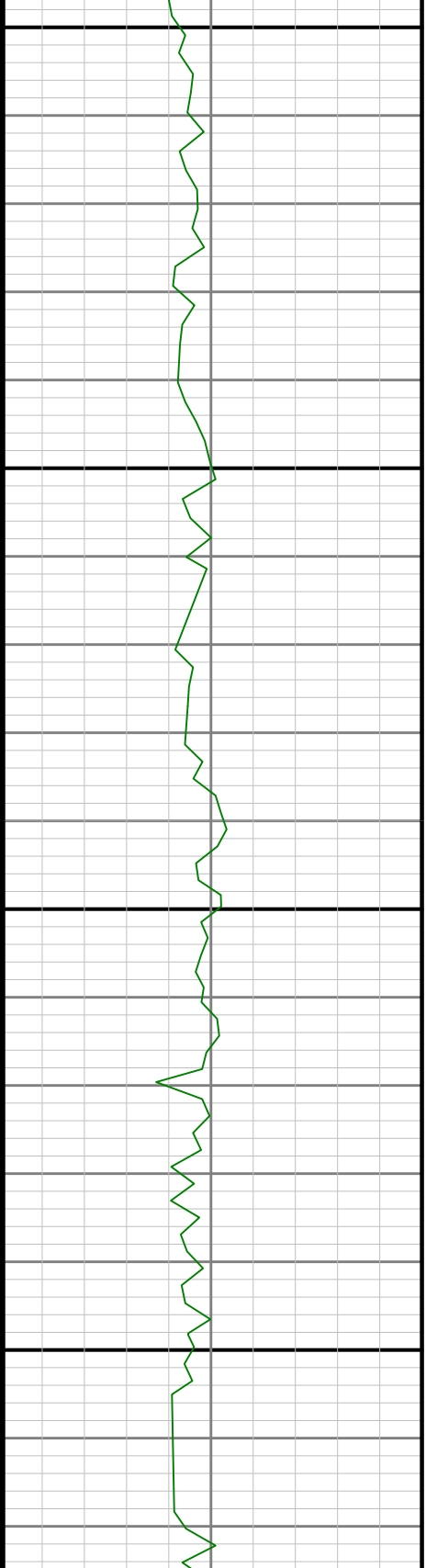


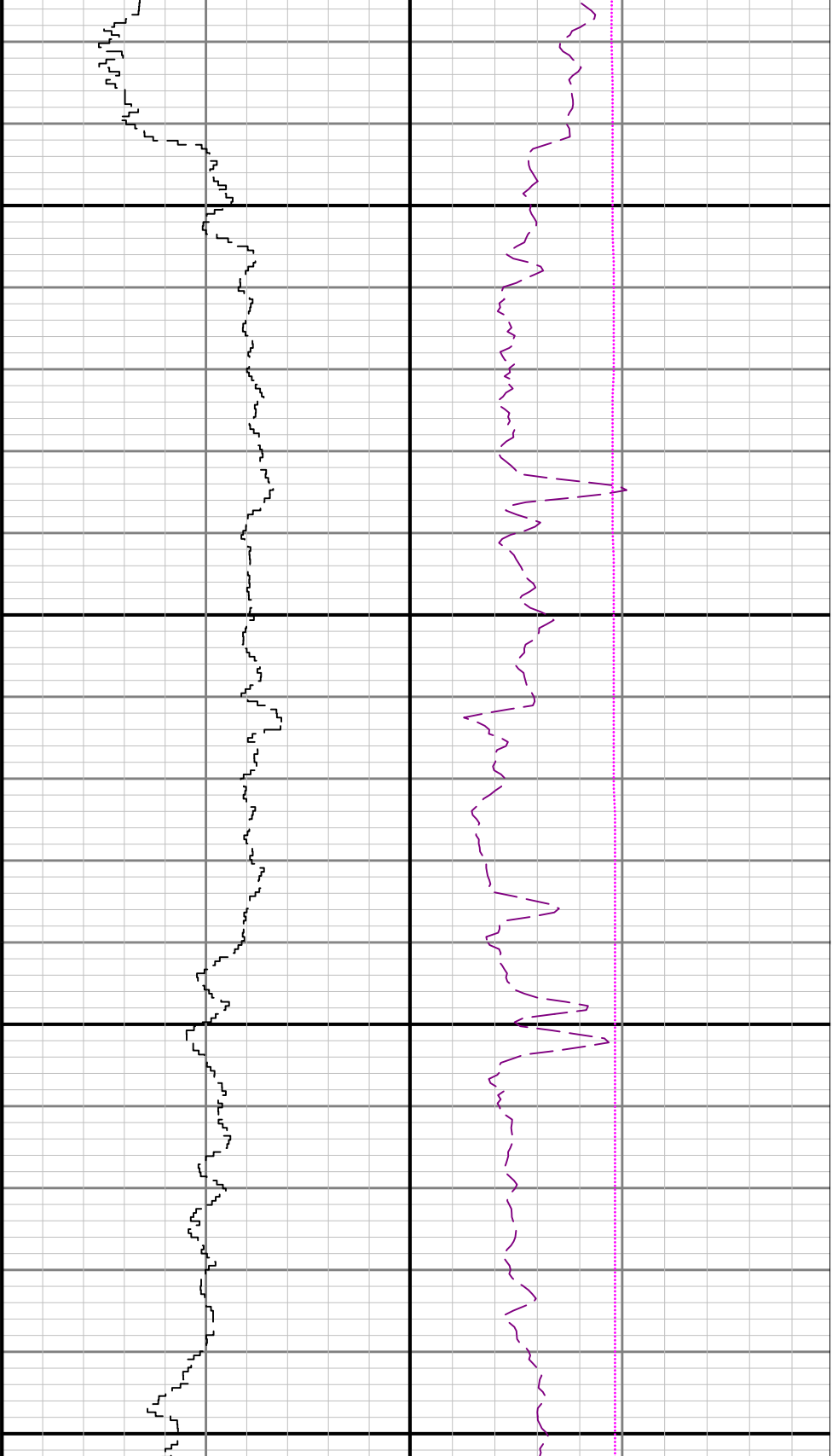




3300

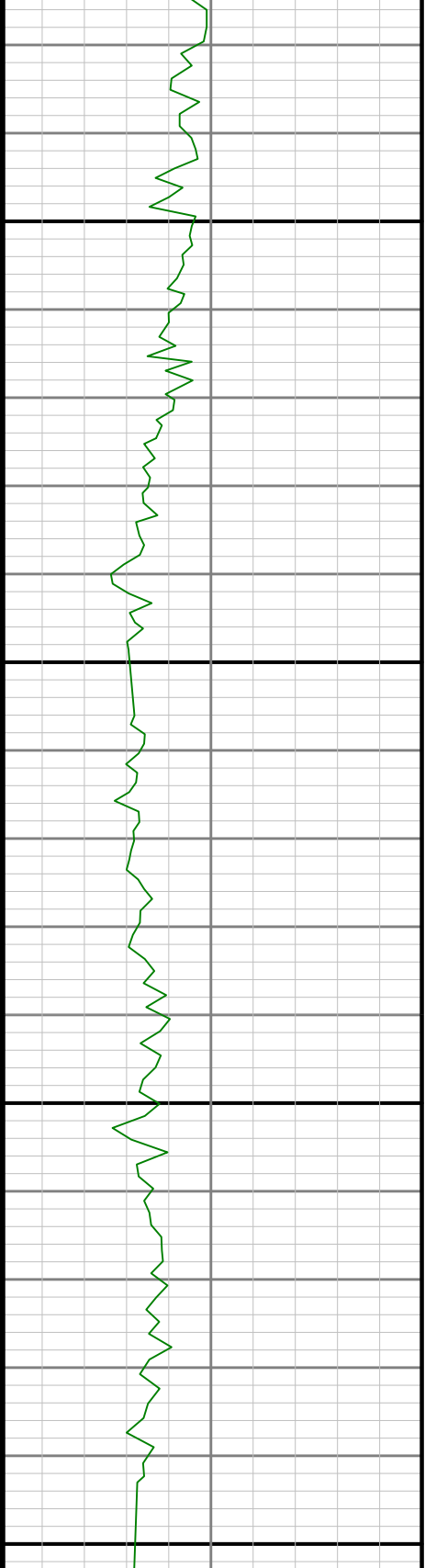
3400

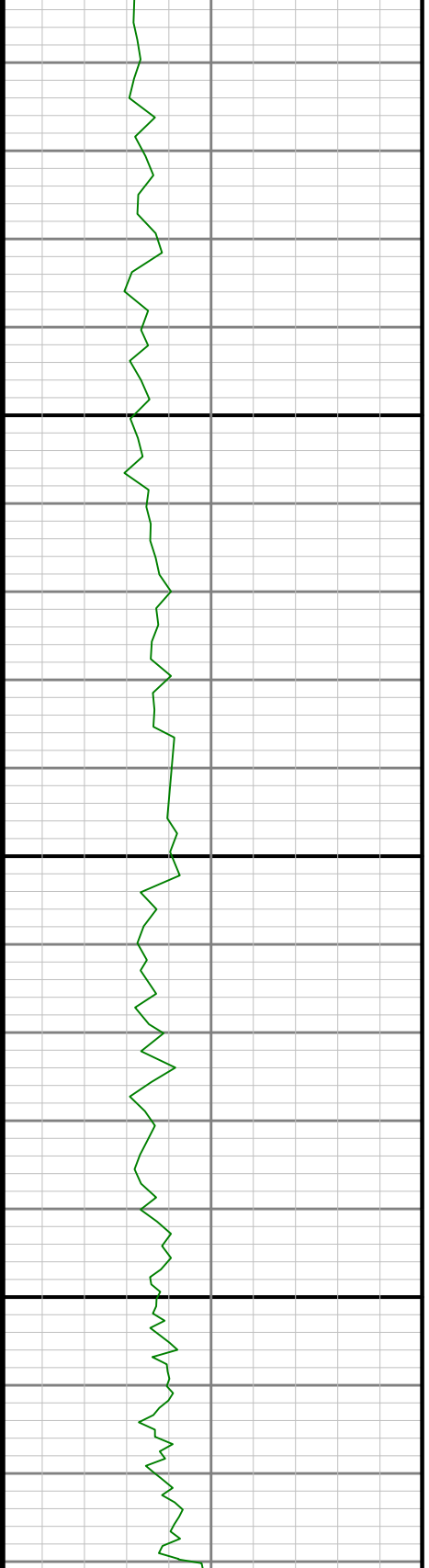
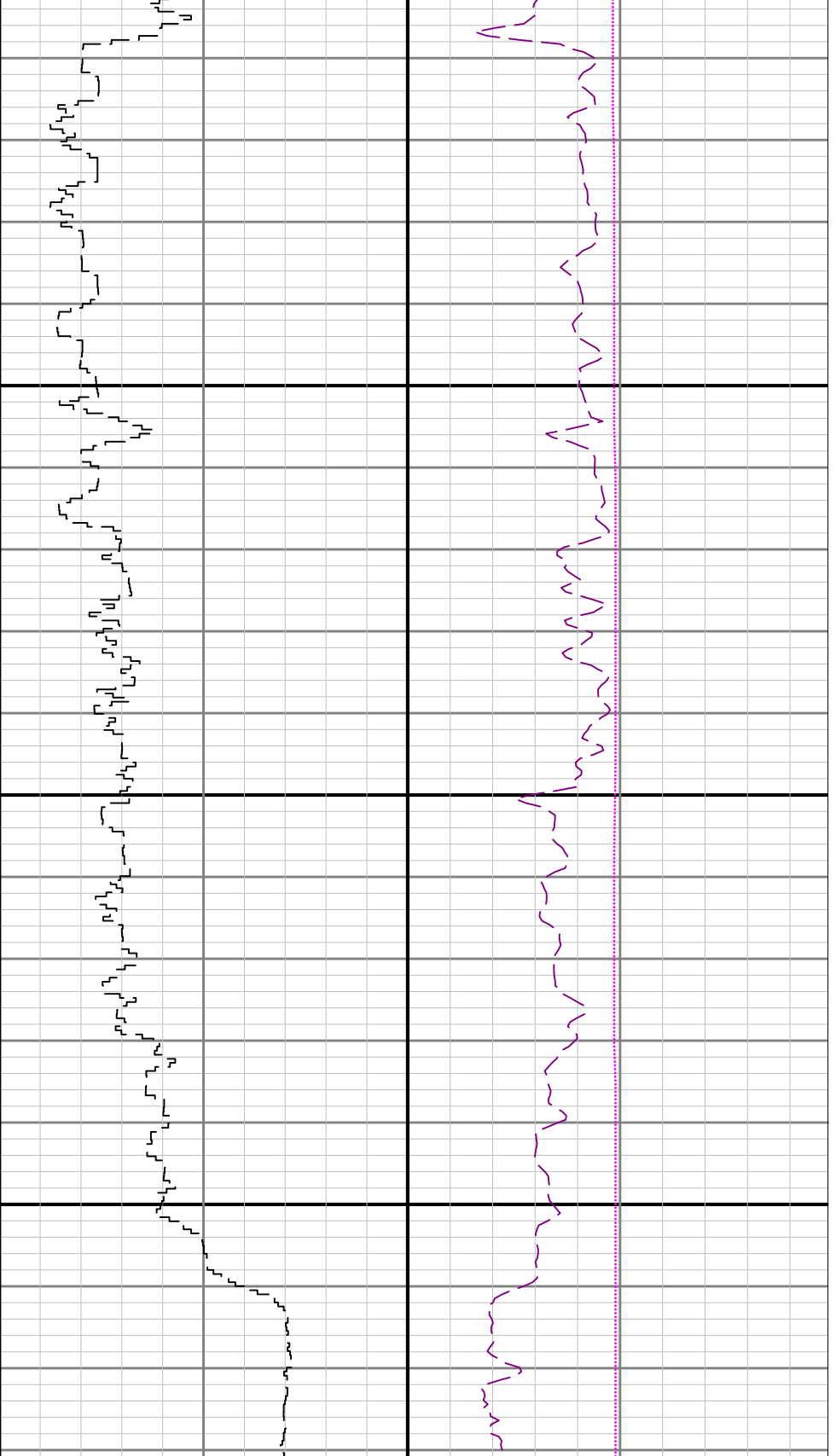


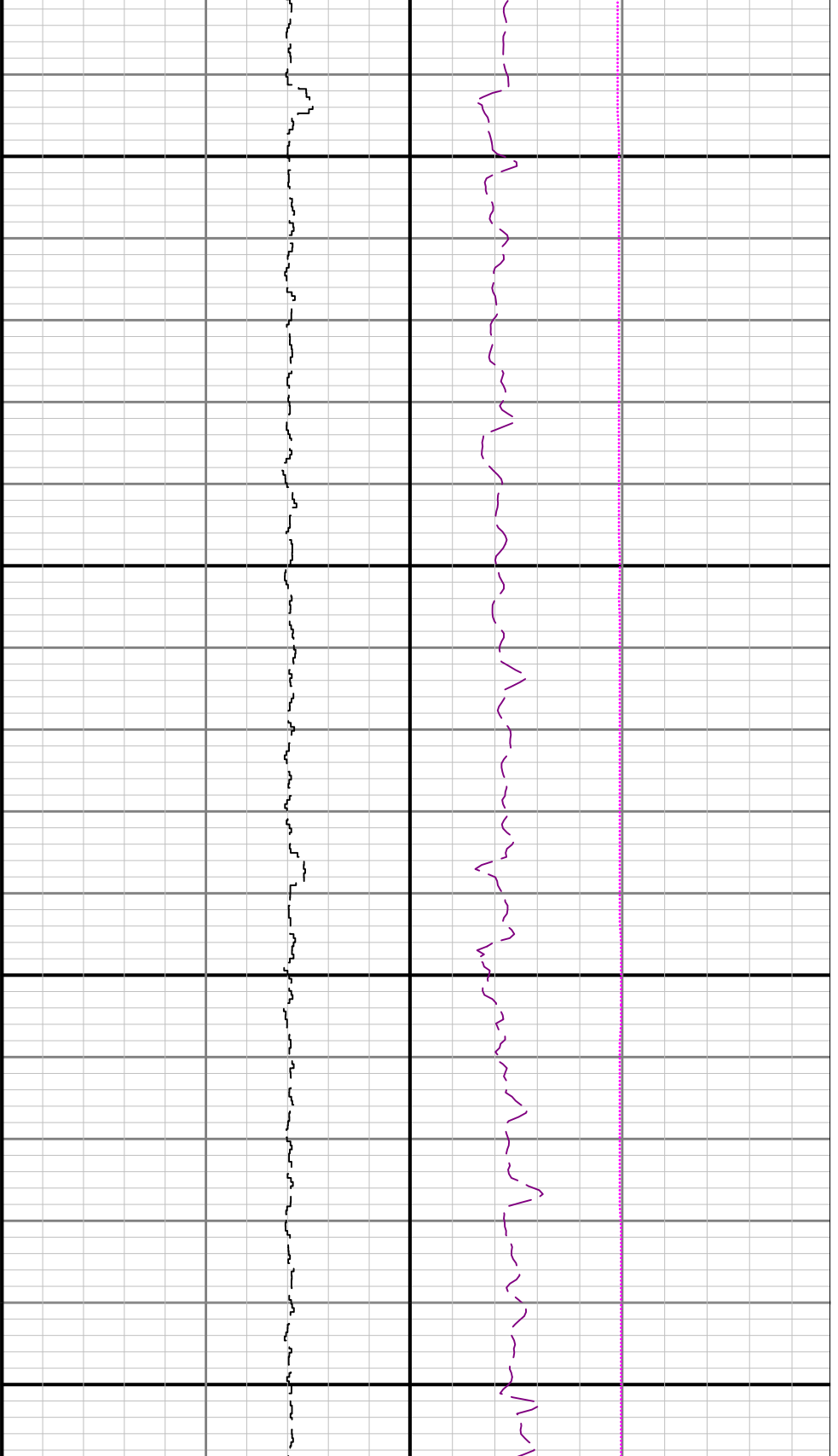


3500

3600

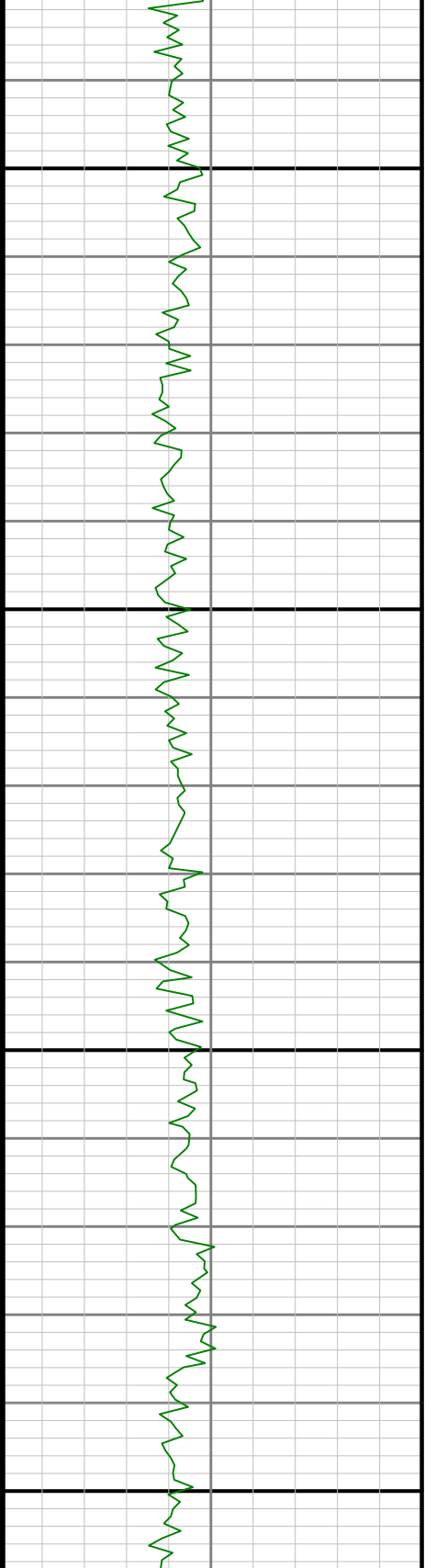


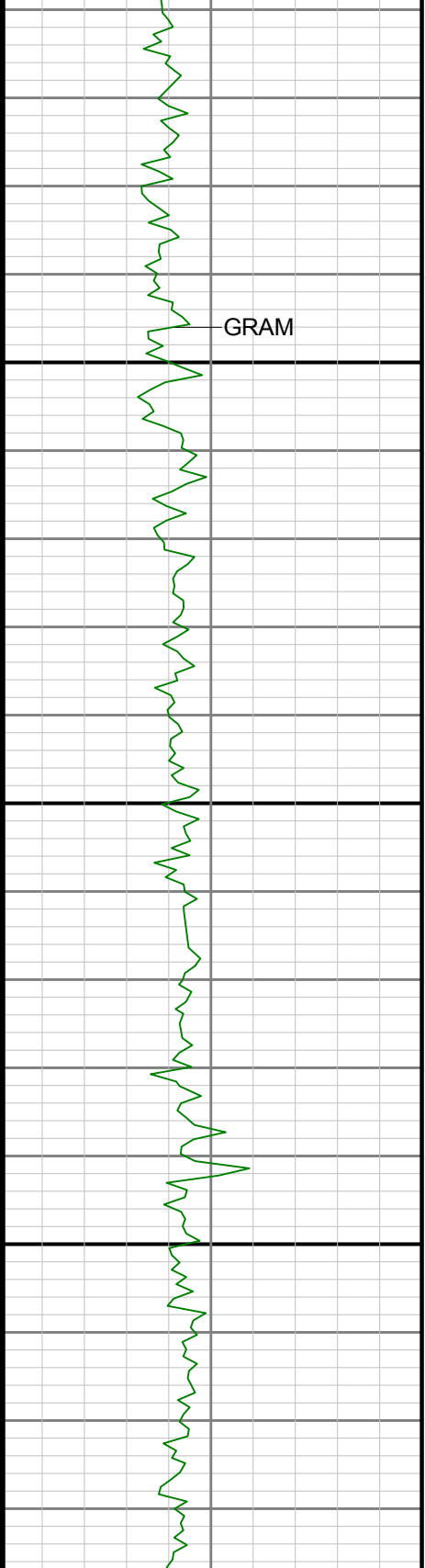




3800

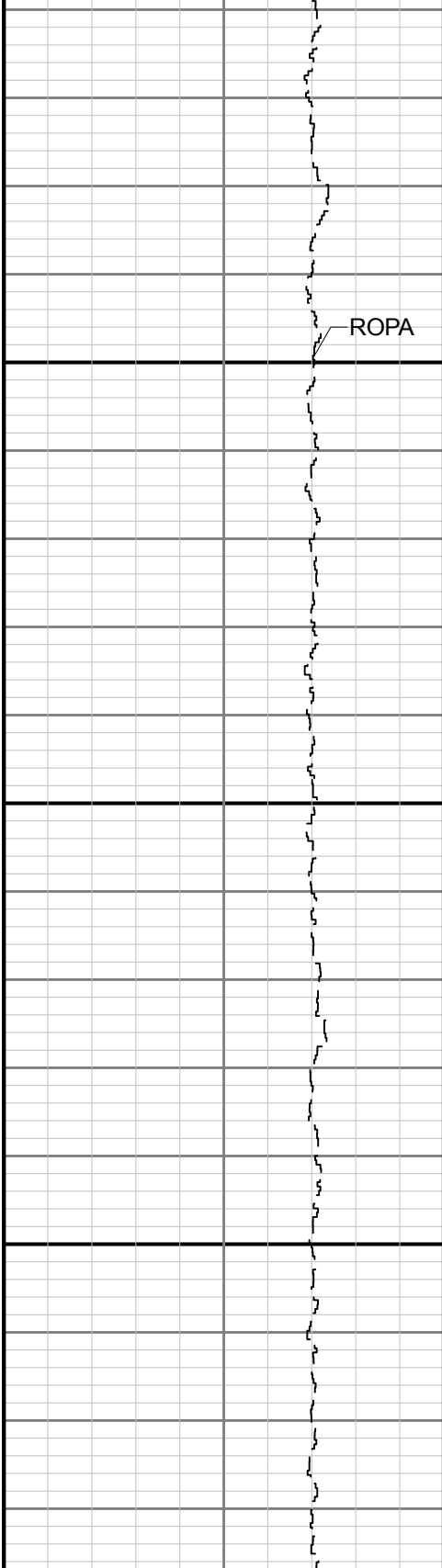
3900

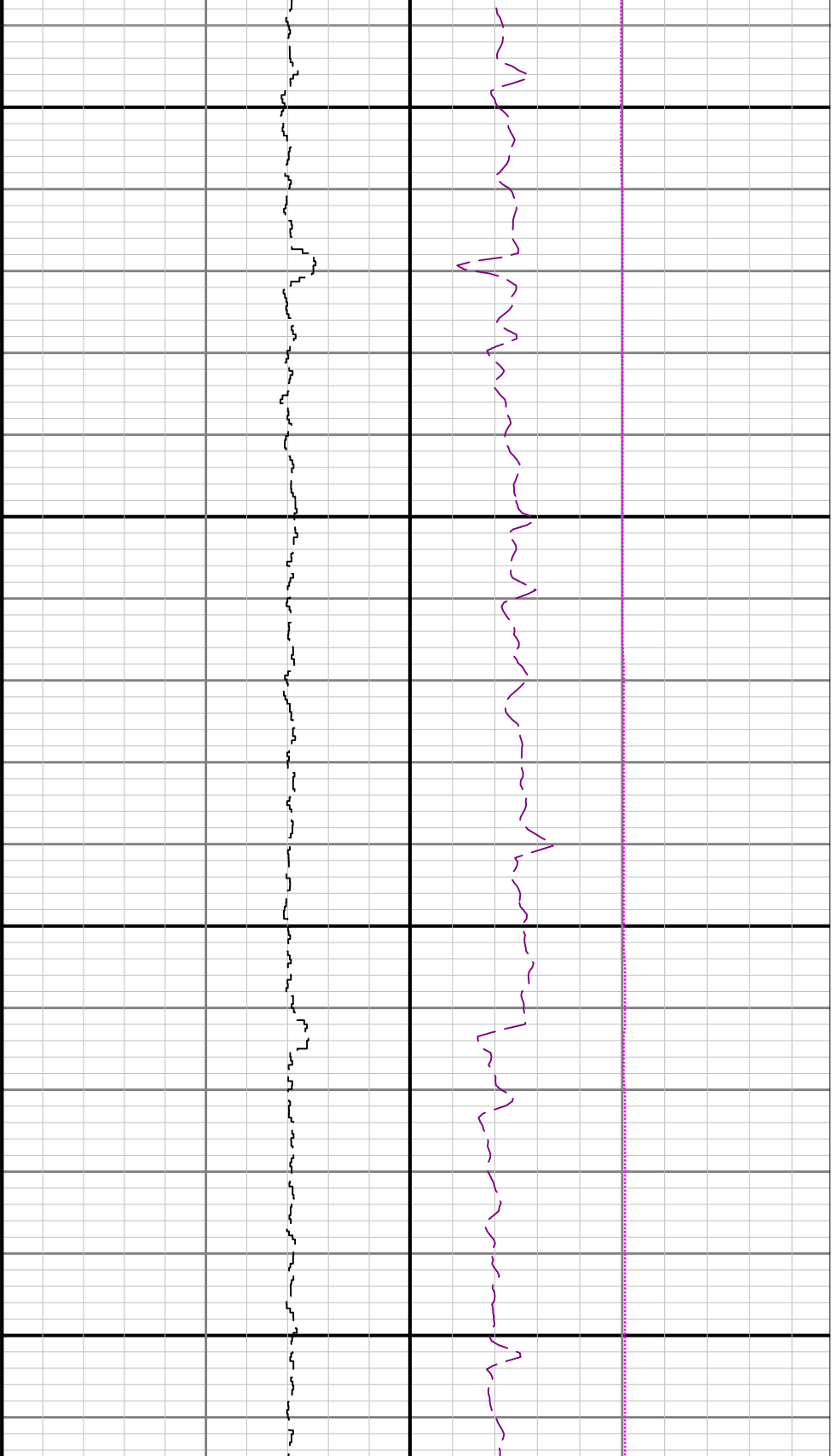




4000

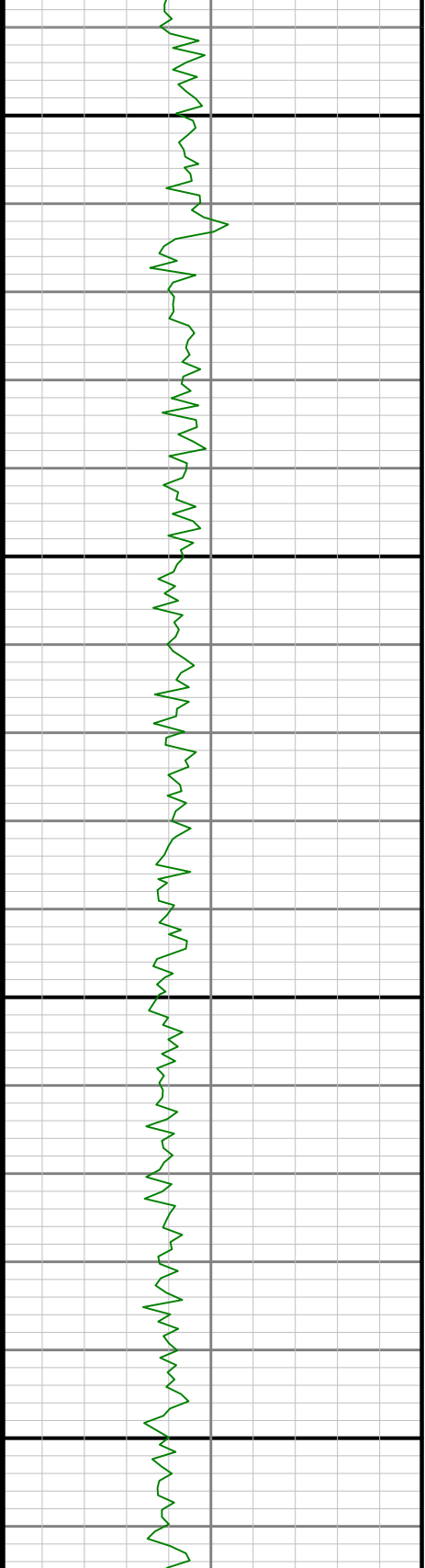
4100

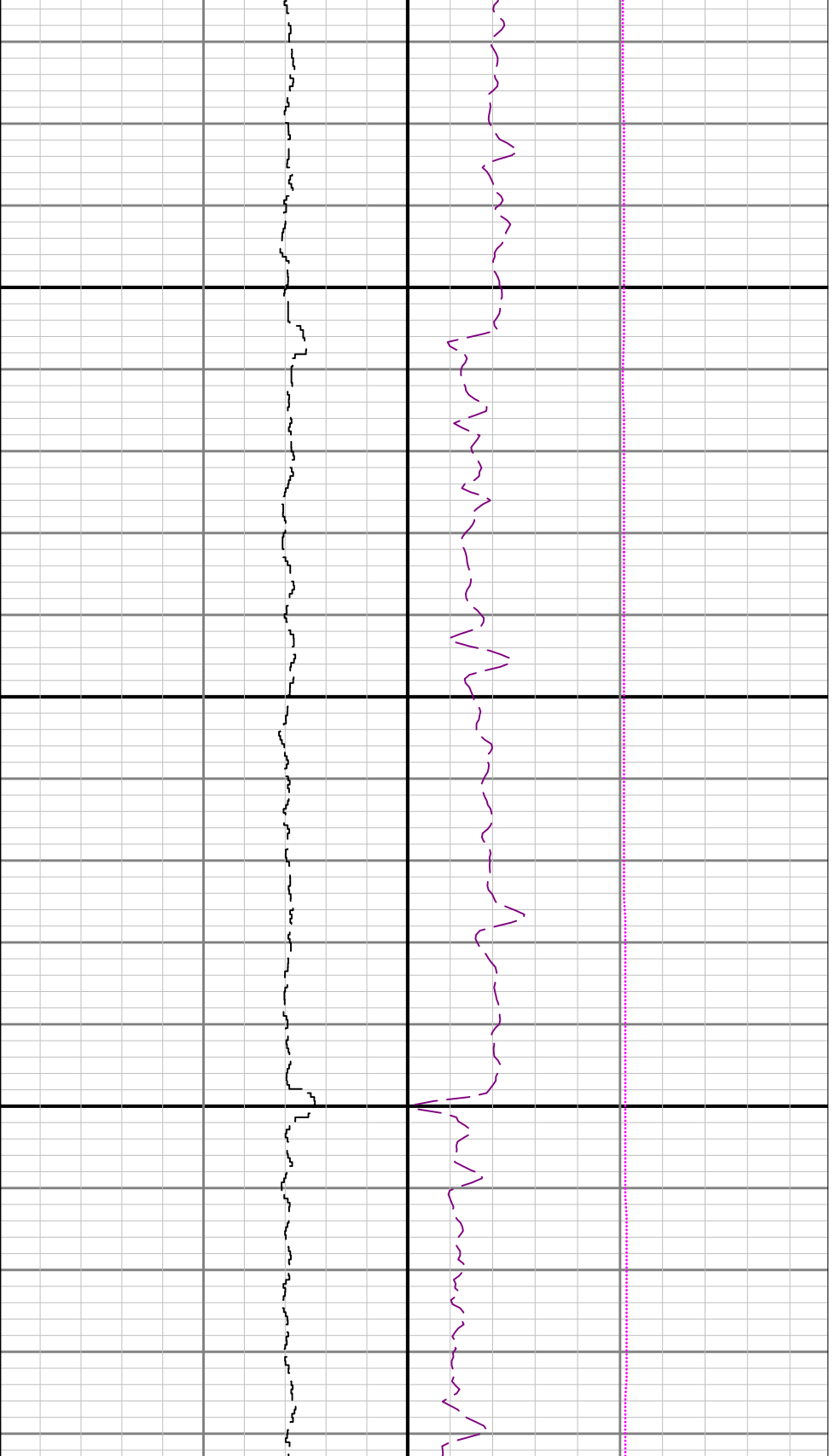




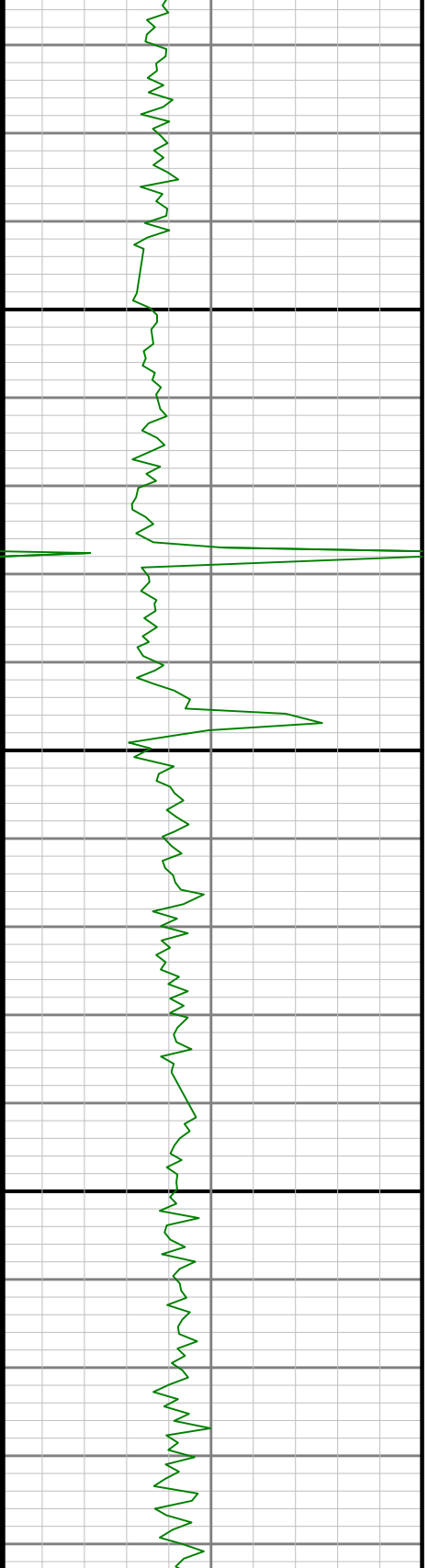
4200

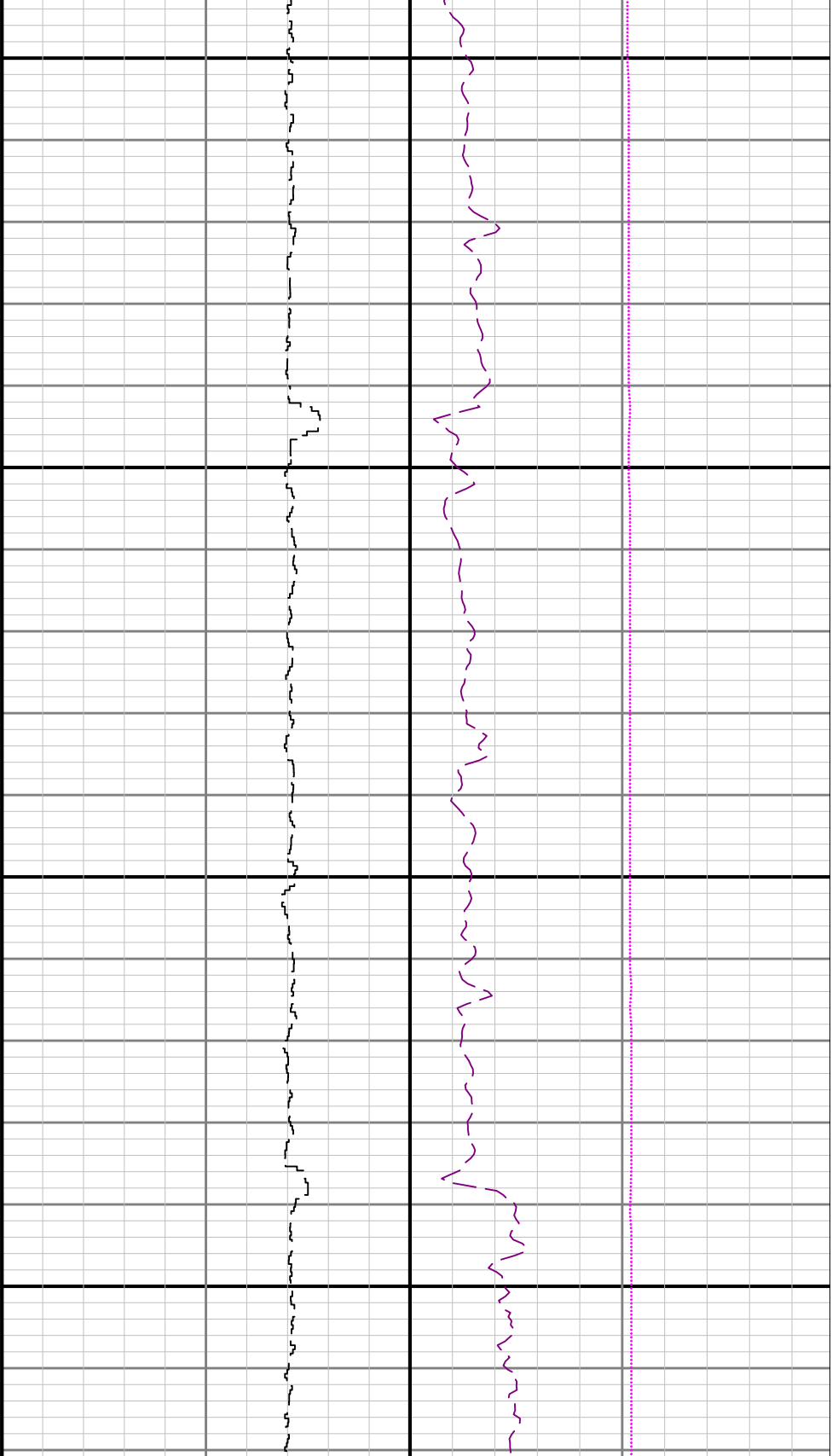
4300





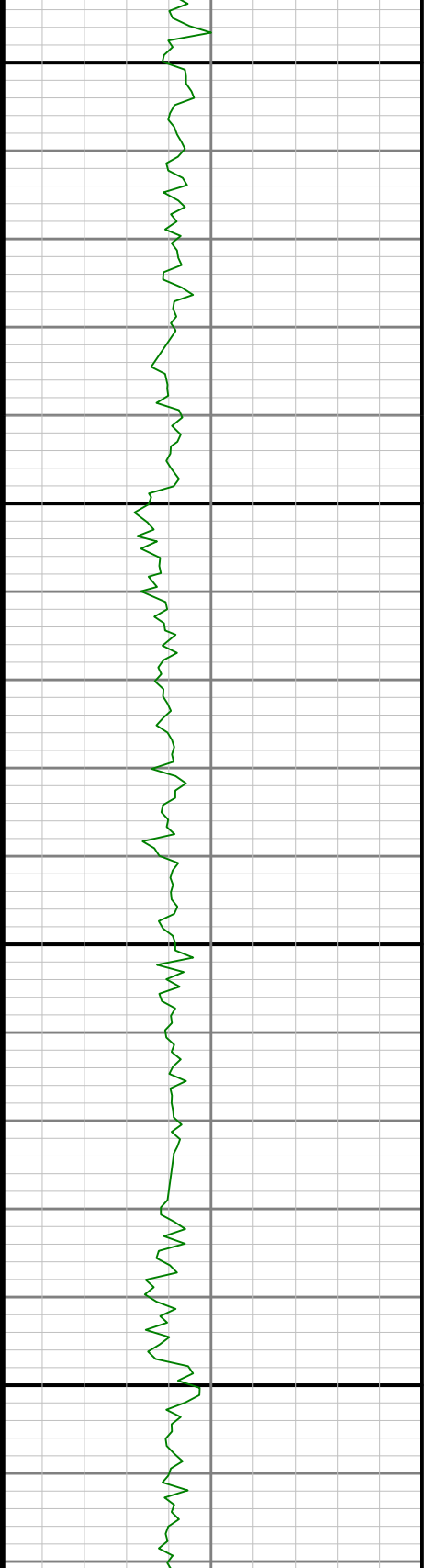
4400

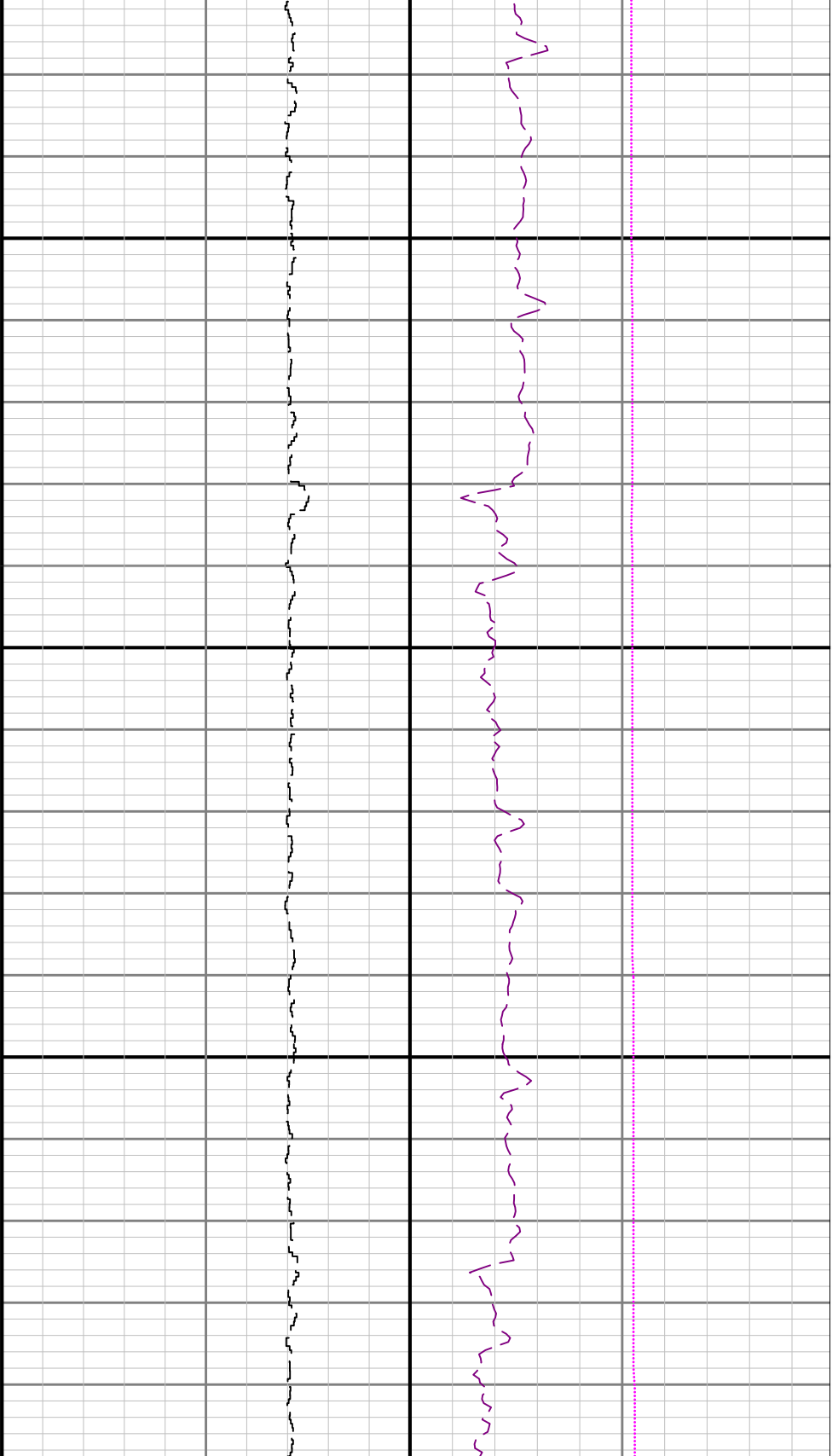




4500

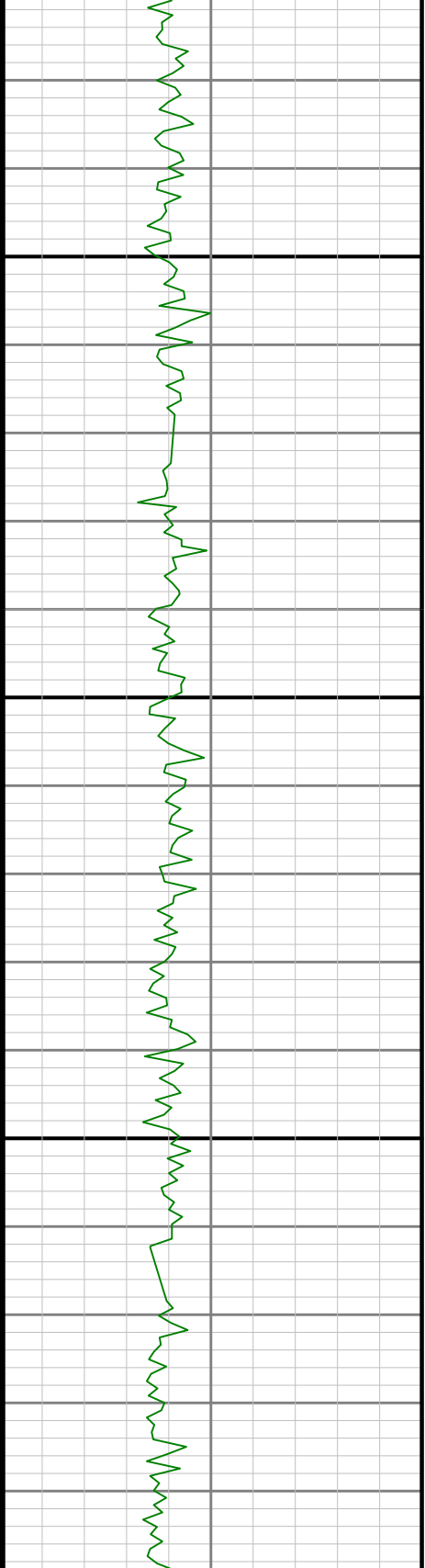
4600

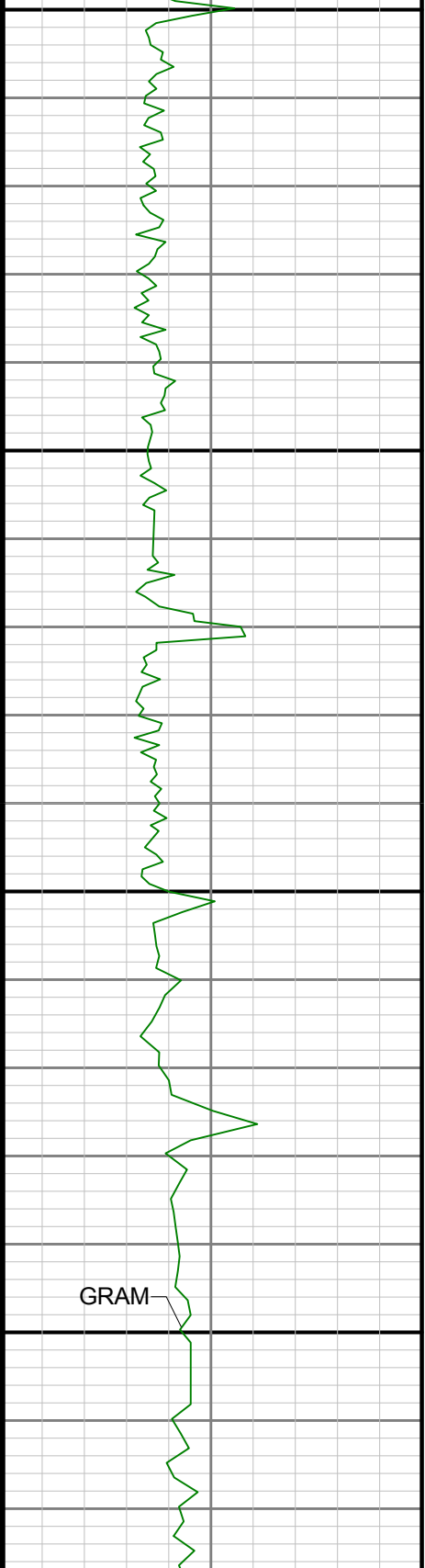




4700

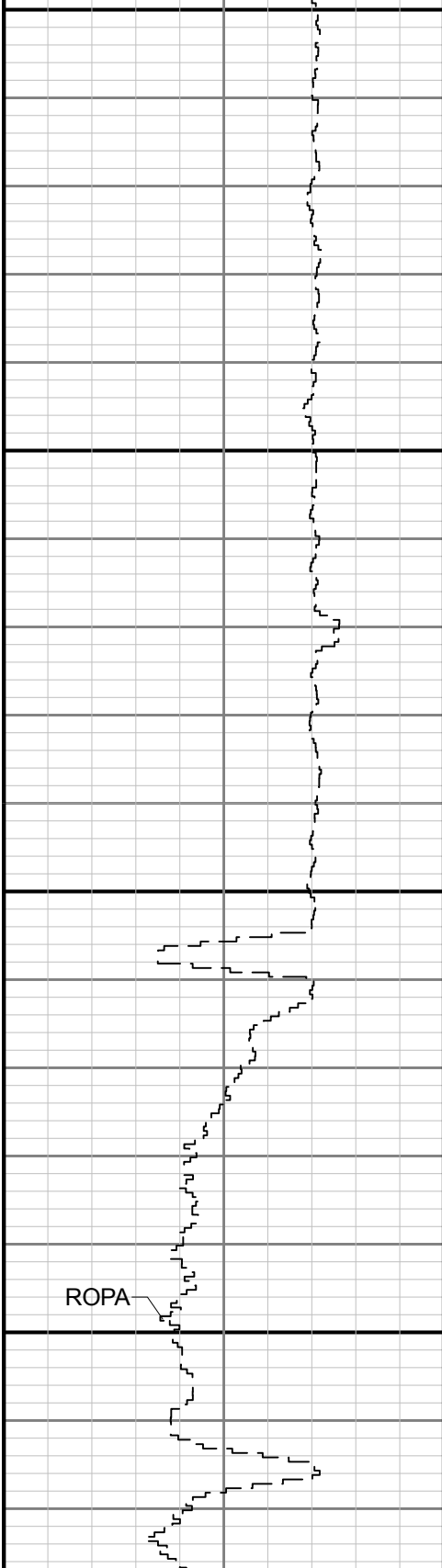
4800

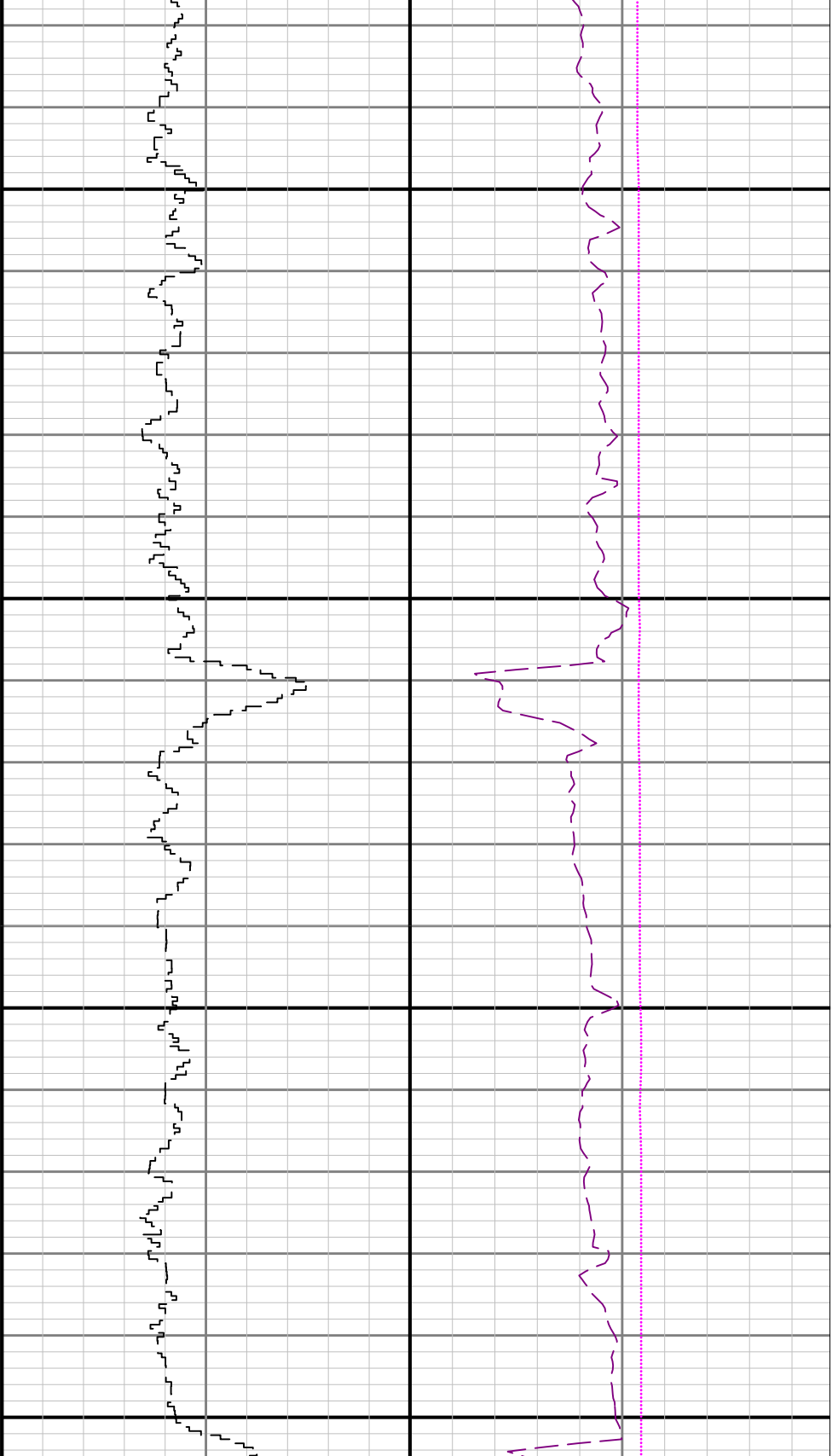




4900

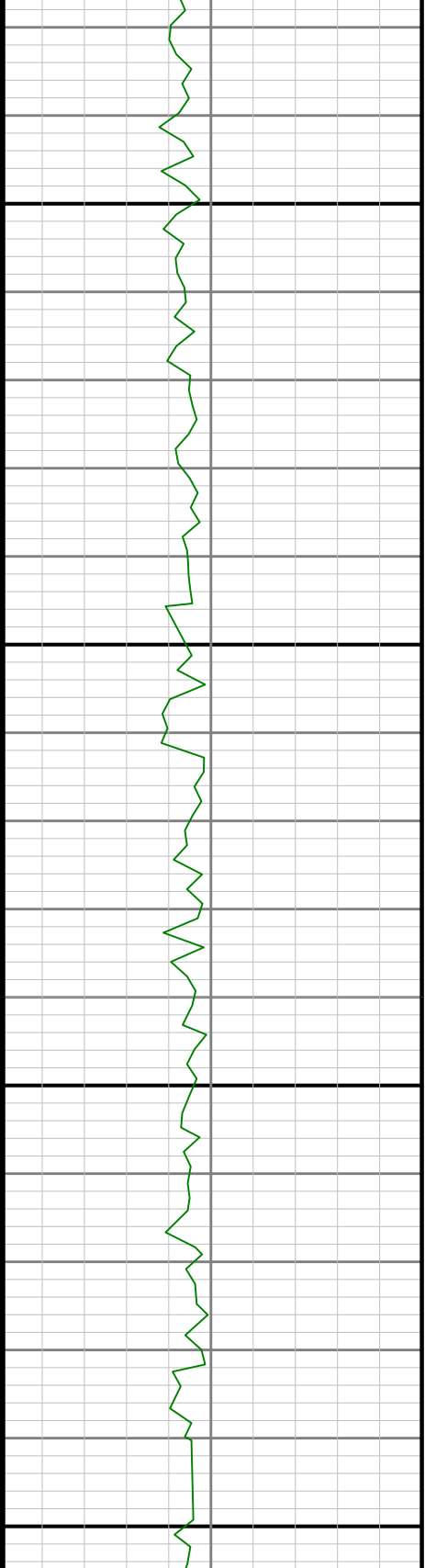
5000

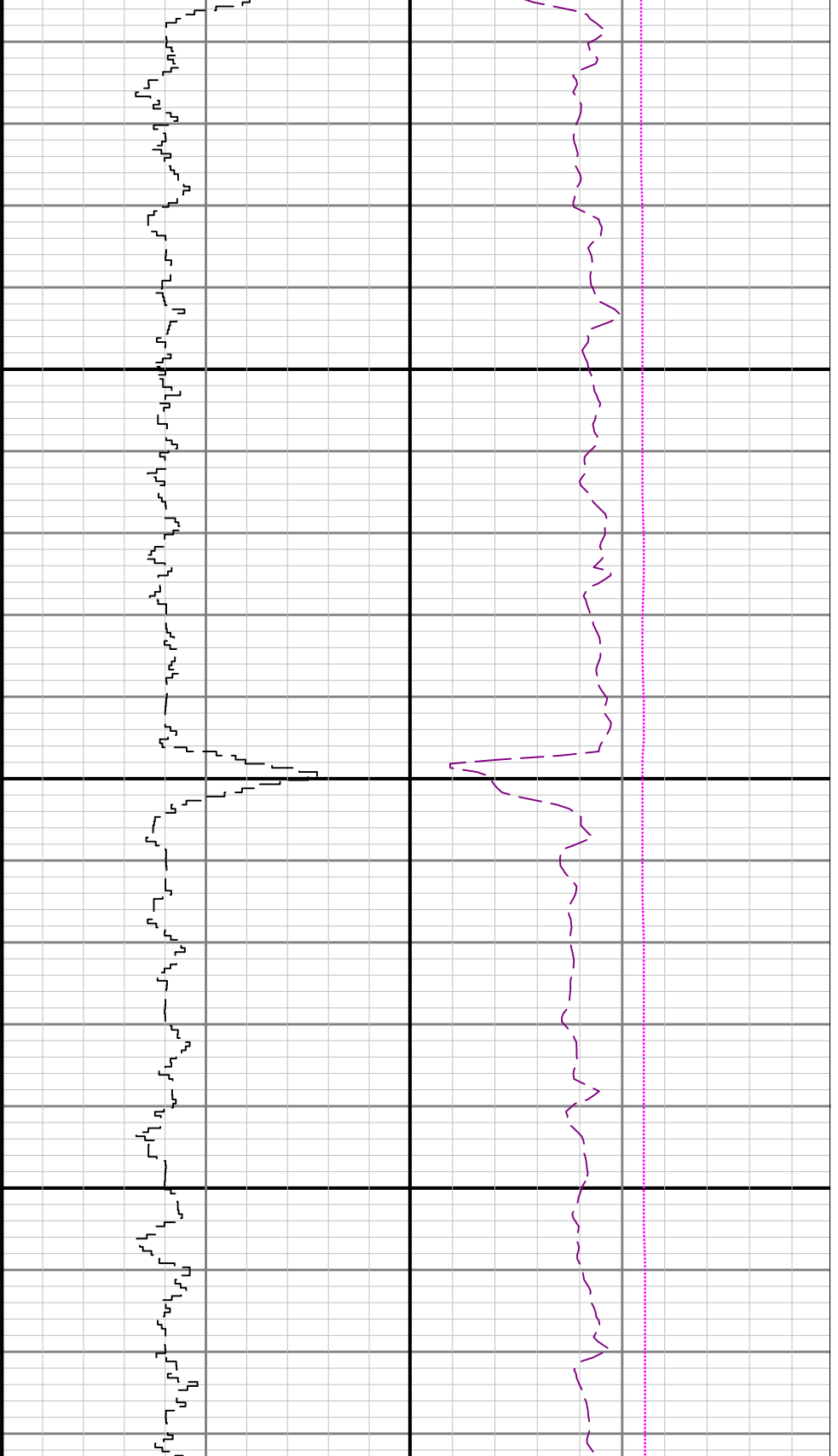




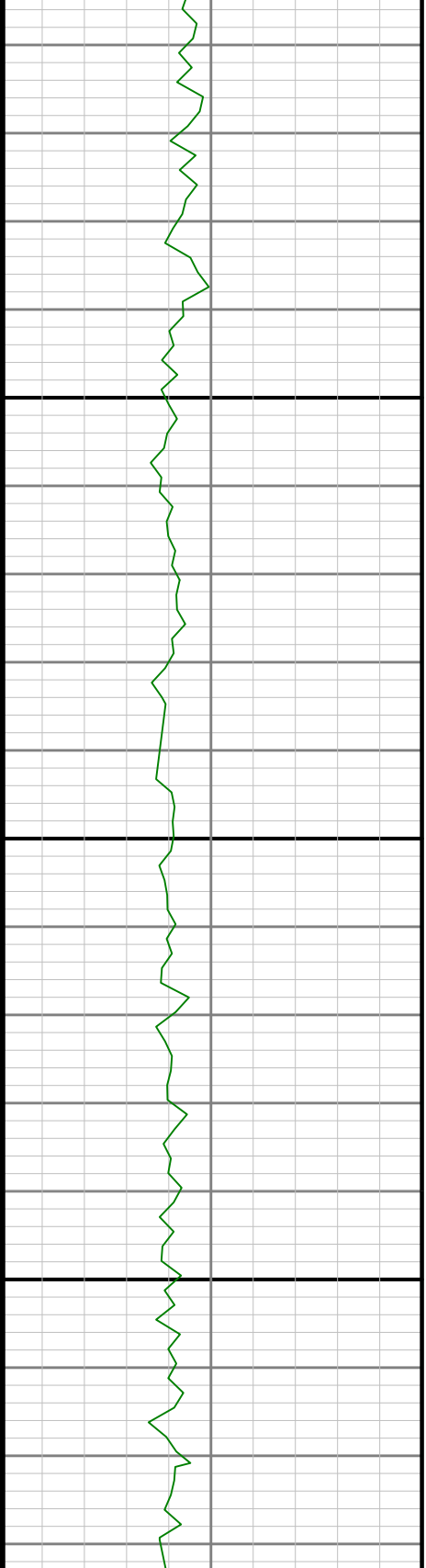
5100

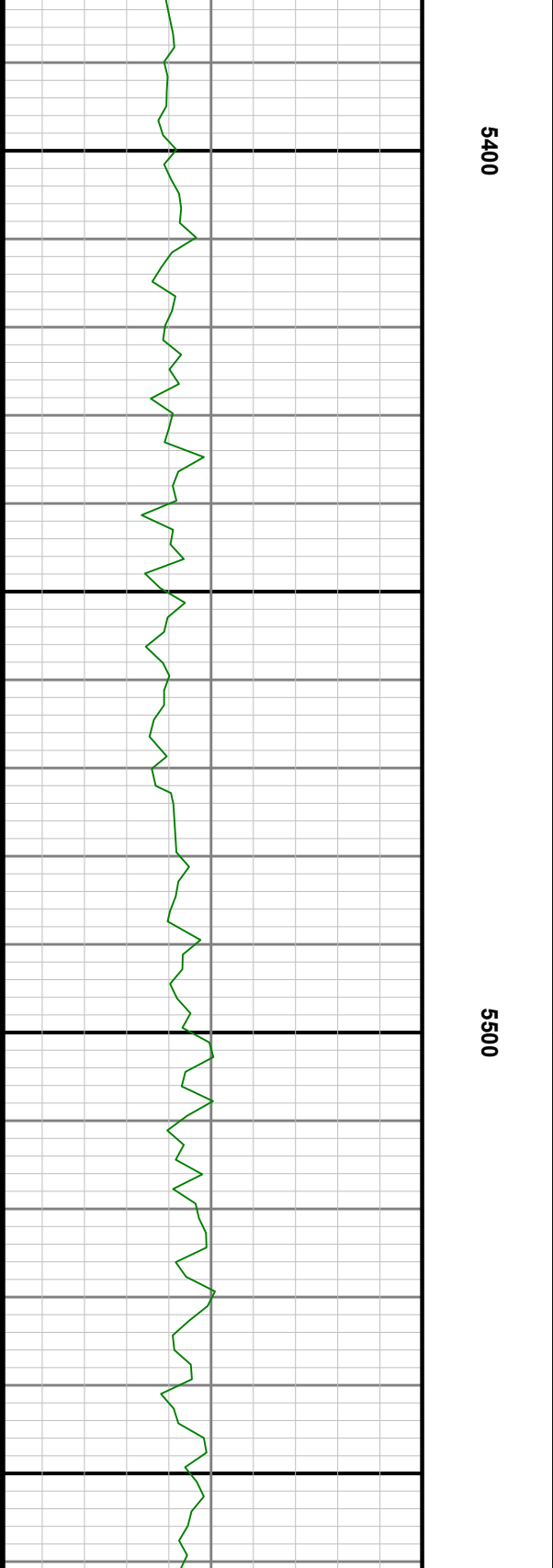
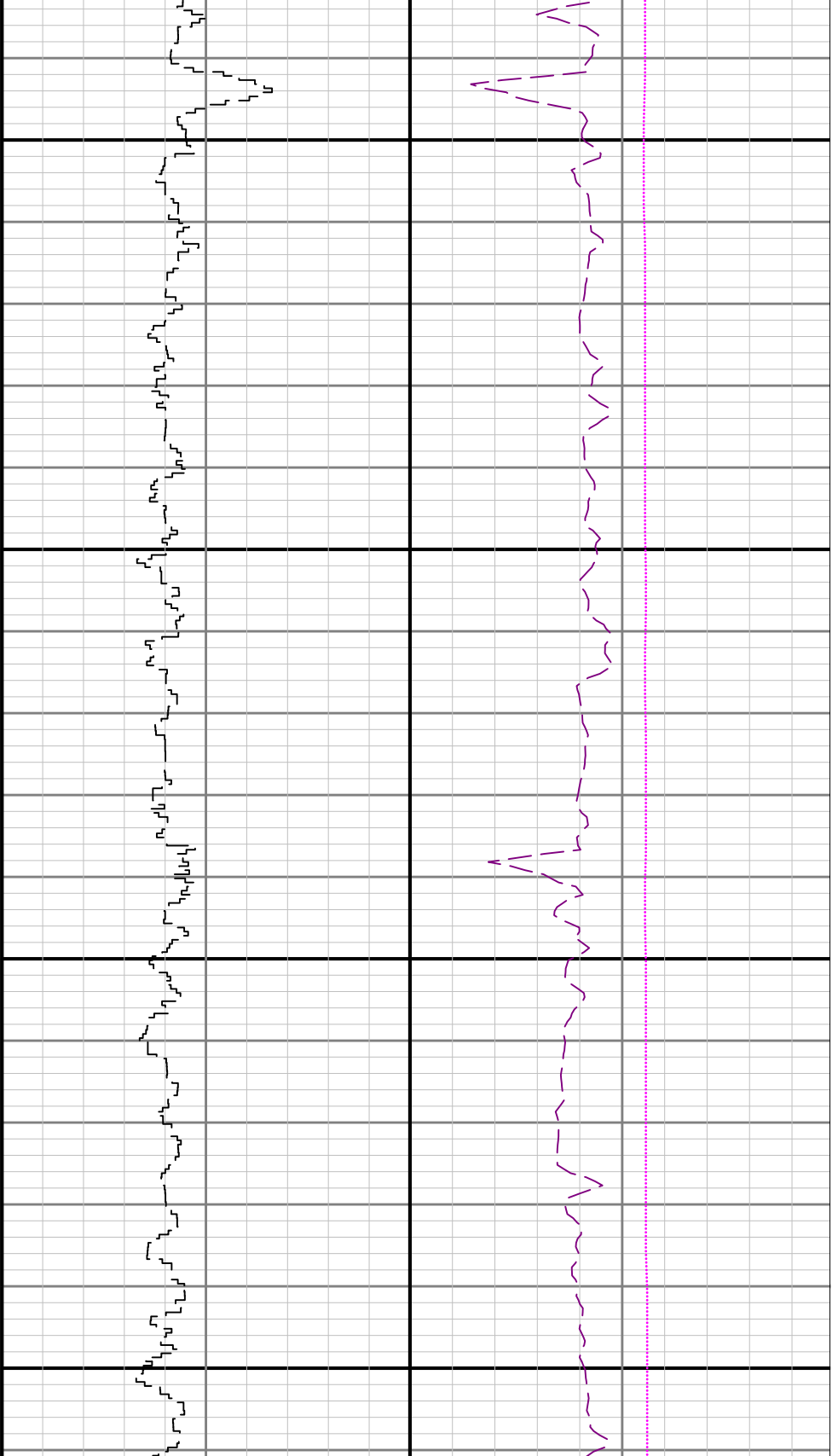
5200

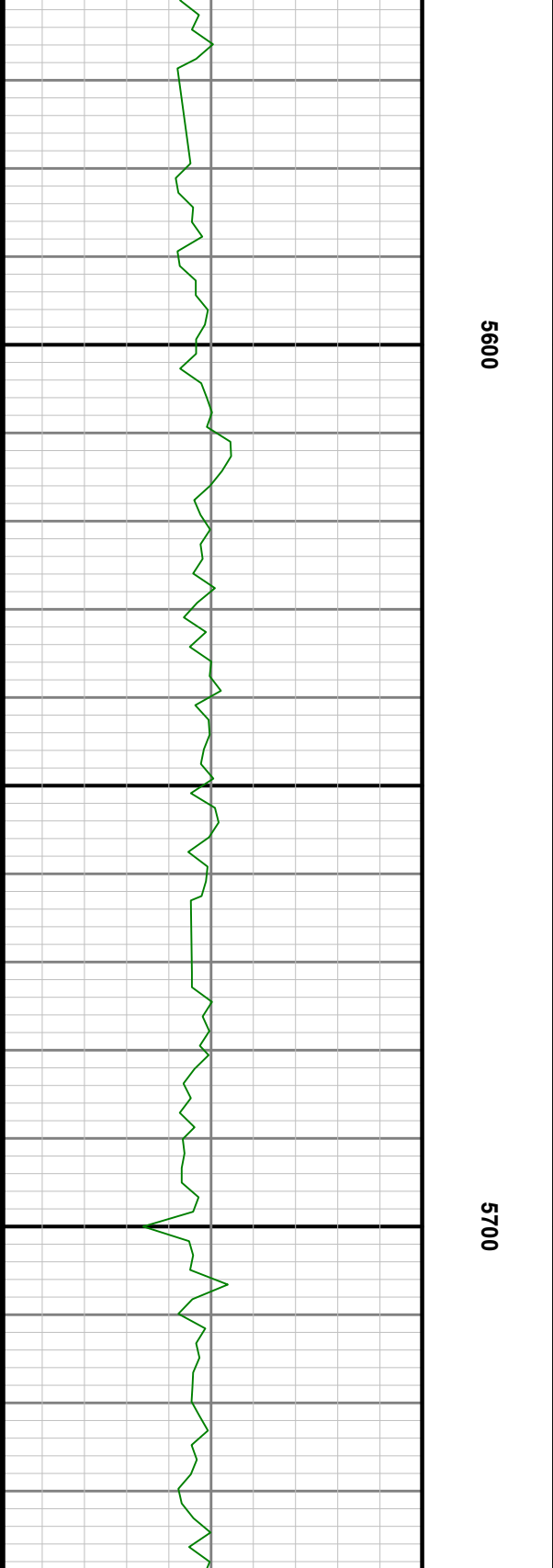
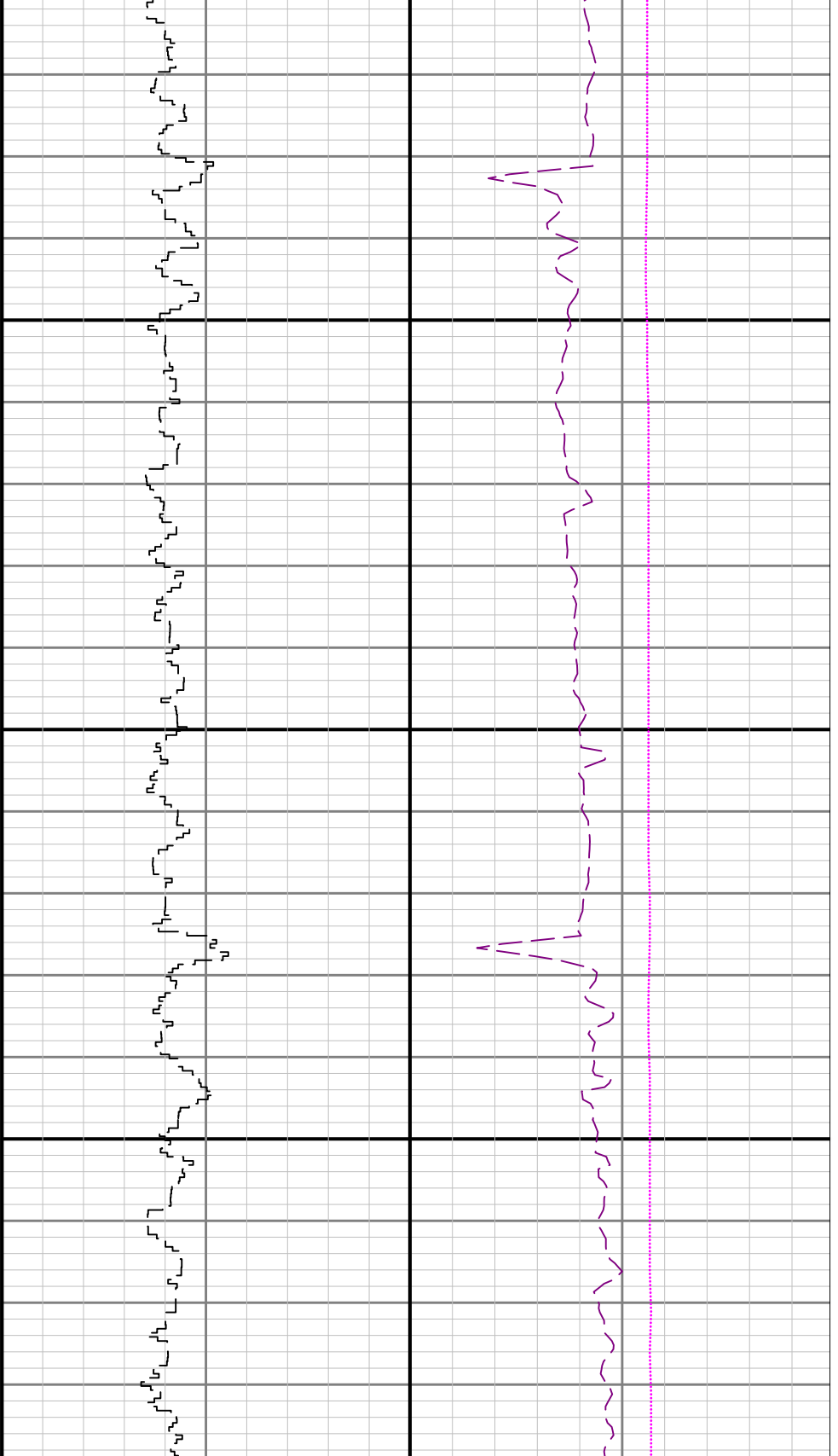




5300



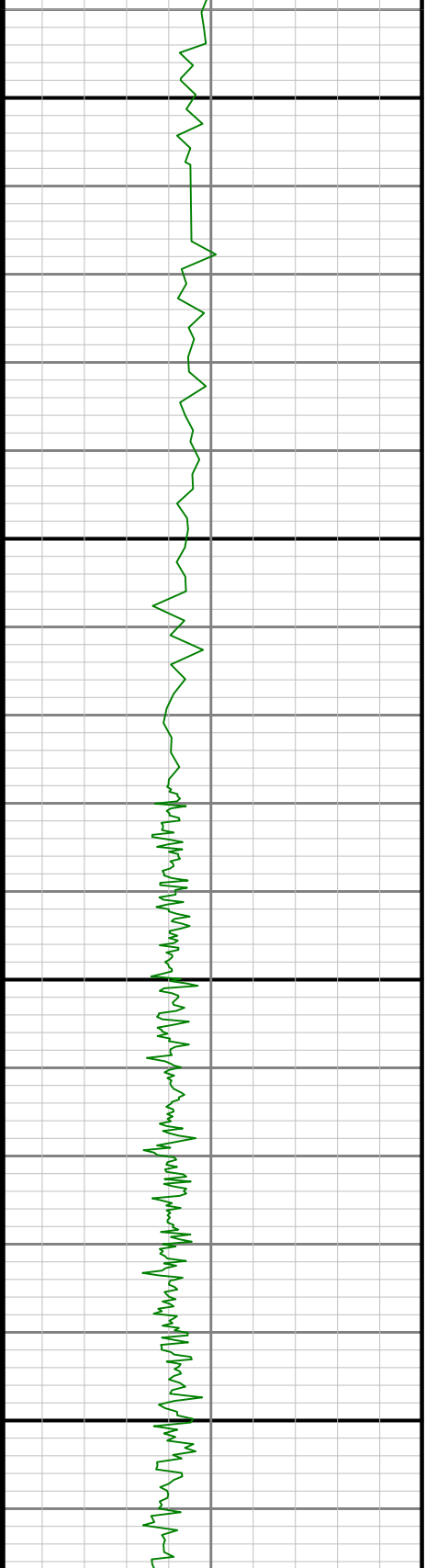


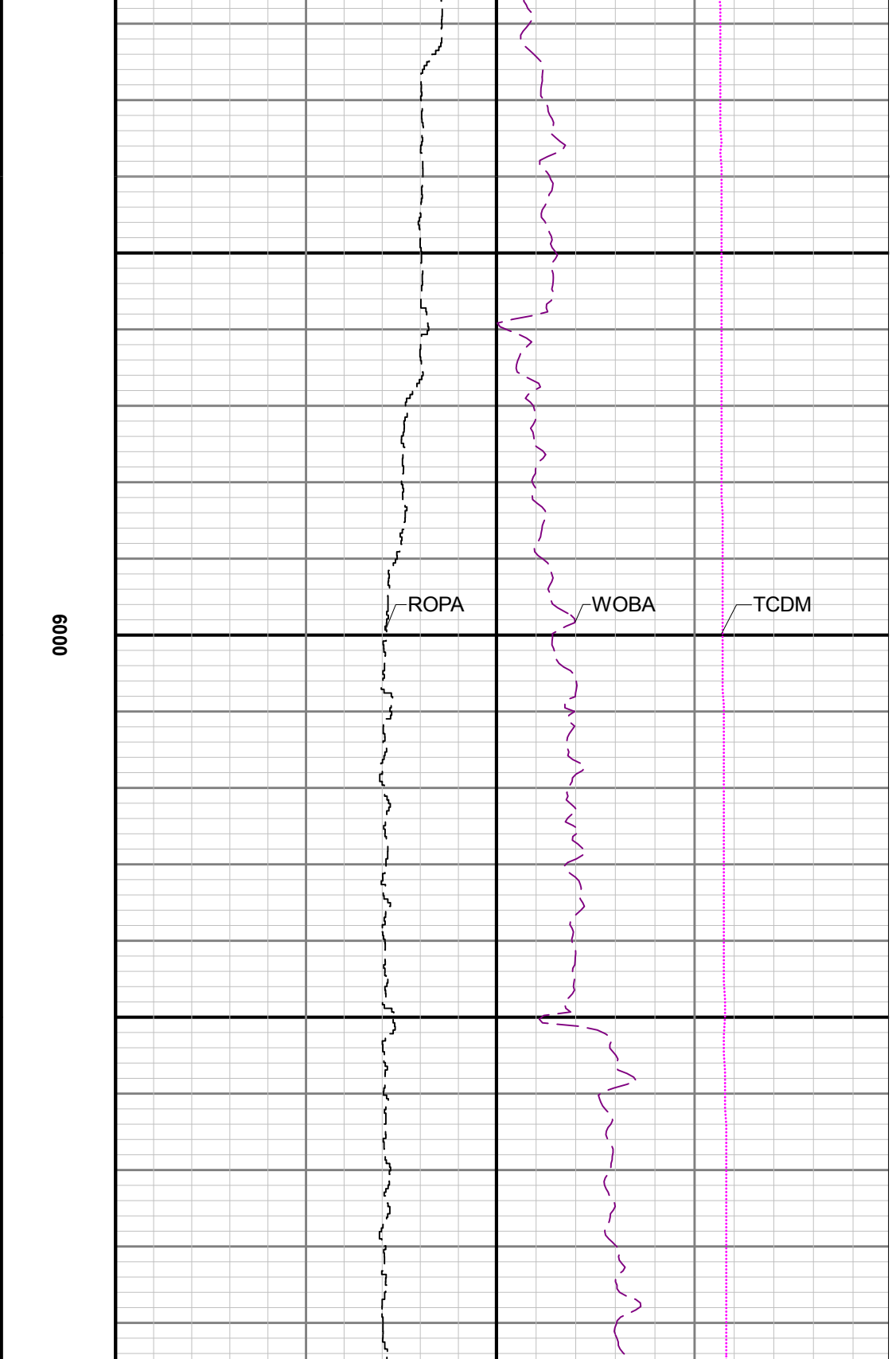
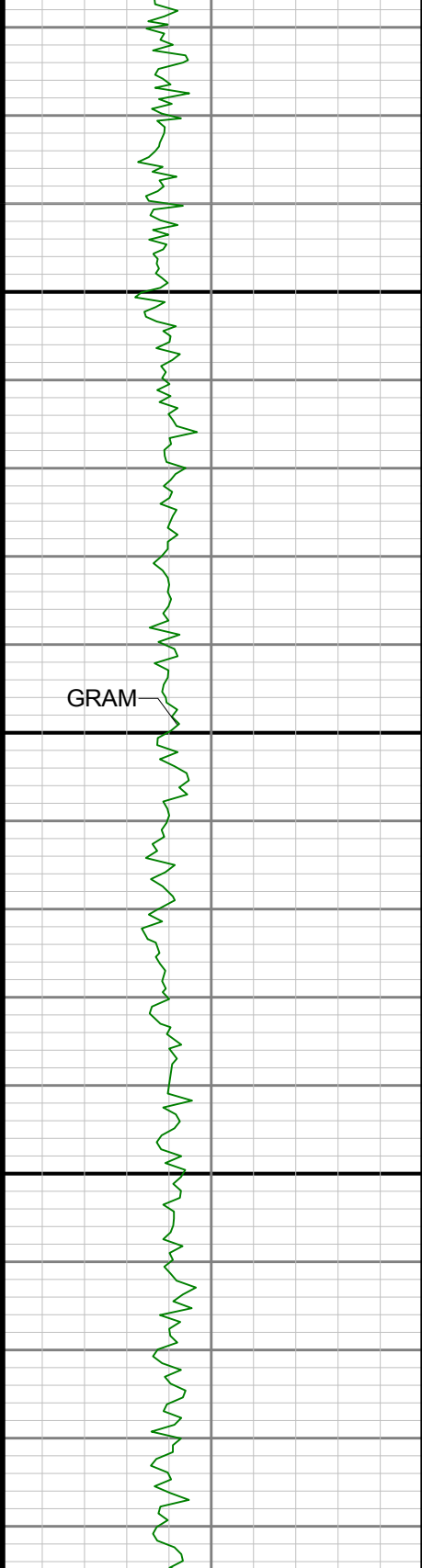


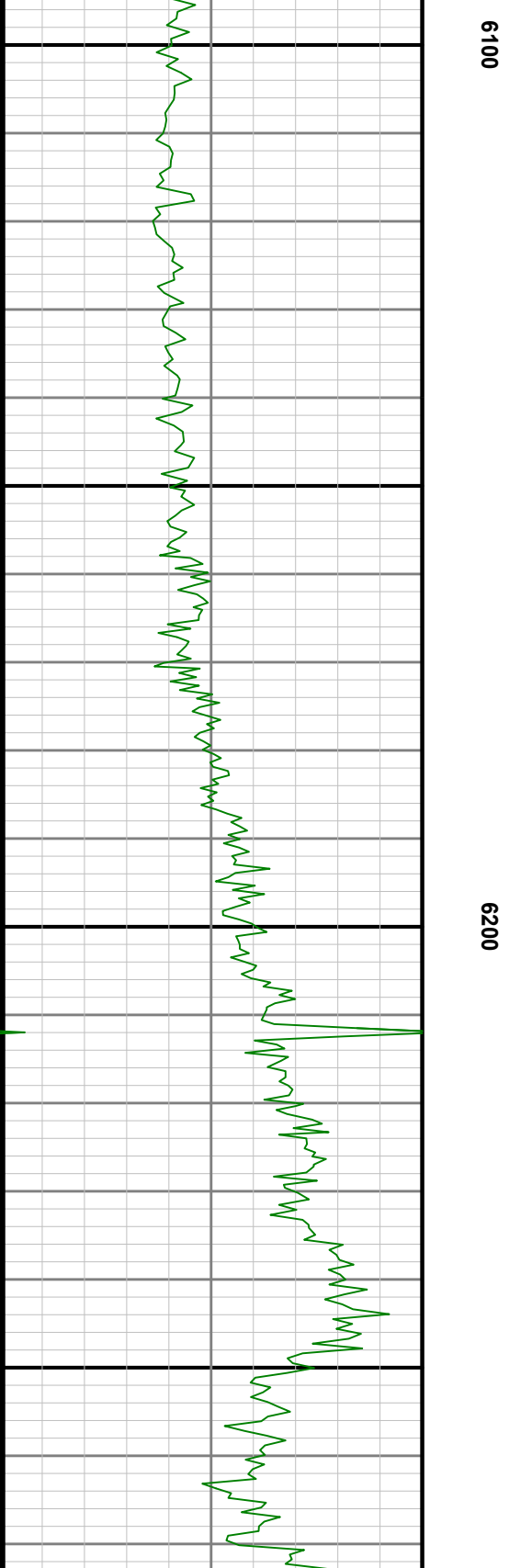


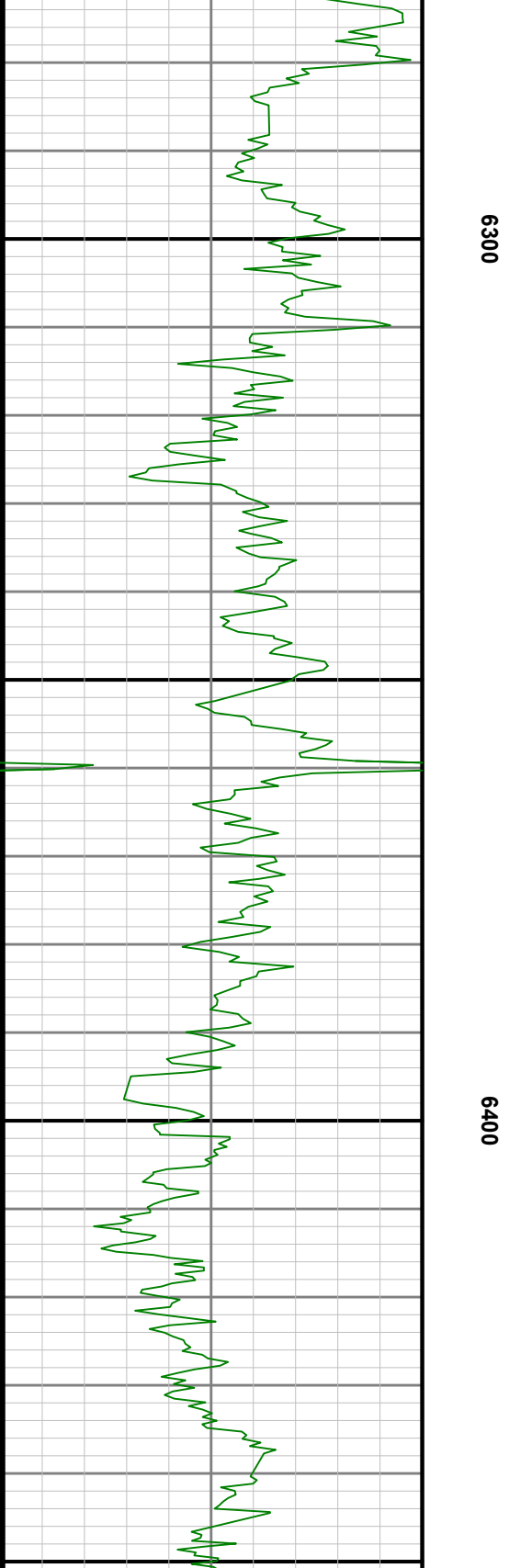
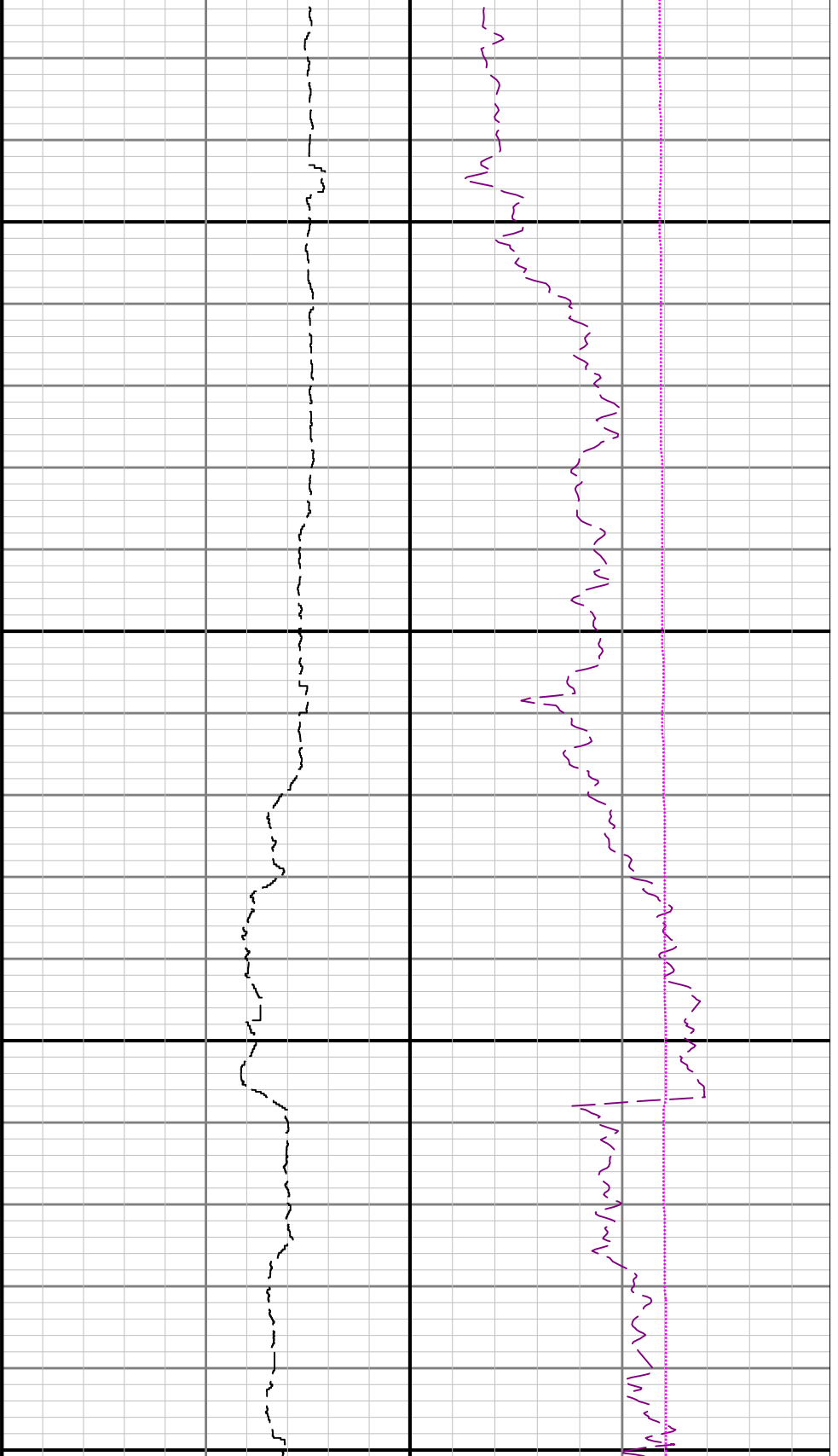
5800

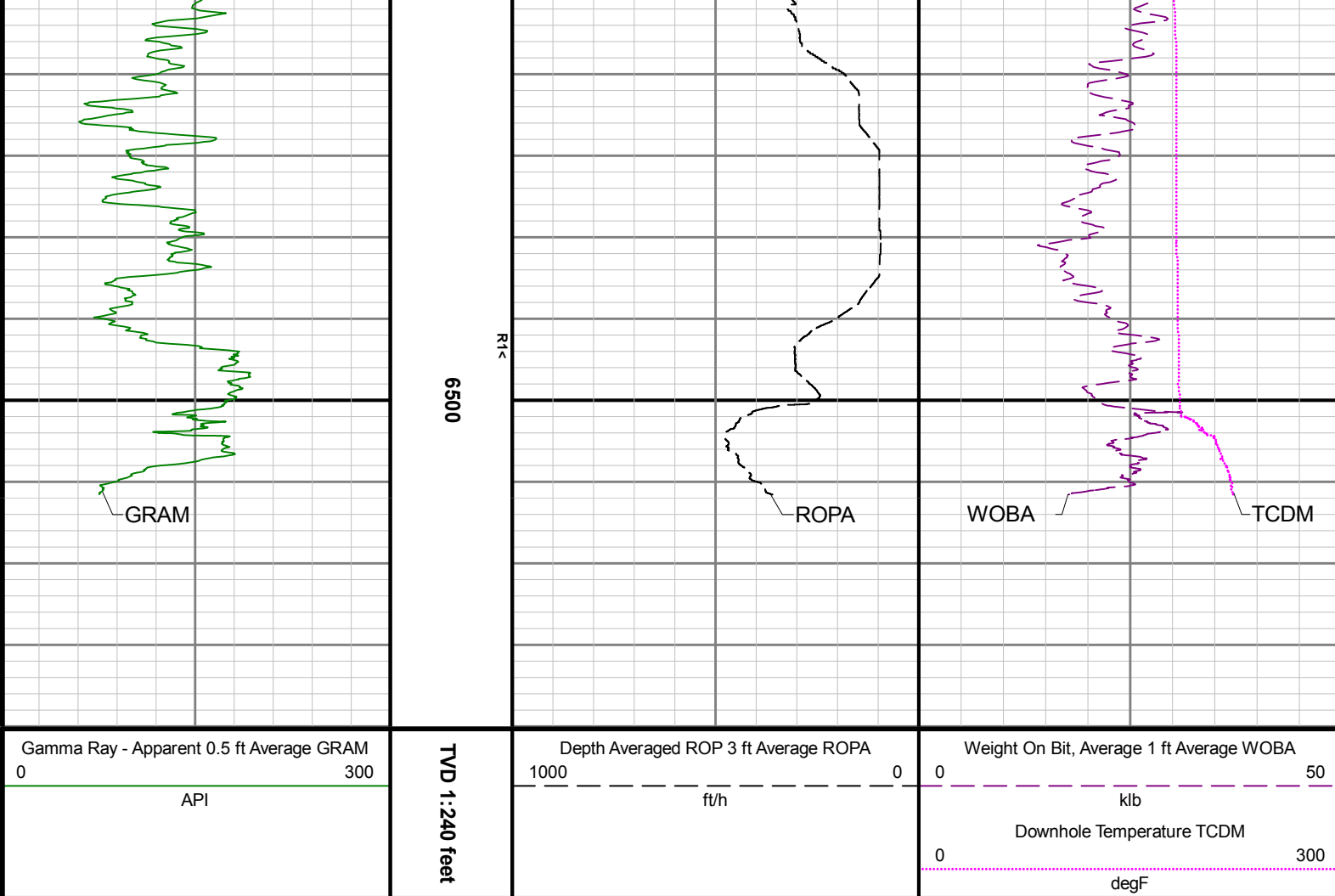
5900











Directional Survey Summary

Latitude:	040° 24' 54.612" N	Longitude:	104° 20' 18.096" W
North Reference:	Grid	Drill Depth Zero:	Rig Floor
Vertical Datum is:	Ground Level	Vertical Datum to DDZ: (ft)	30.00
Vertical Section North: (m)	0.00	Vertical Section East: (m)	0.00
Vertical Section Azimuth: (deg)	269.89		
Grid Convergence: (deg)	-0.75	Magnetic Declination: (deg)	7.88
Total Correction: (deg)	7.13	TVD Calculation Method:	Minimum Curvature
Magnetic Correction:	Off	Local Magnetic Field: (nT)	52286
Local Magnetic Dip Angle: (deg)	67.14	Local Gravity Field: (m/s2)	9.800

Tie-In / Projection	Measured Depth (ft)	Inclination (deg)	Azimuth (deg)	Temperature (degF)	North (ft)	East (ft)	True Vertical Depth (ft)	Vertical Section (ft)	Course Length (ft)	Dog Leg Severity (deg/100ft)	Build Rate (deg/100ft)	Turn Rate (deg/100ft)
Tie-In	0.00	0.00	0.00	N/A	0.00	0.00	0.00	0.00	0.00	0.00	0.00	0.00
	82.00	0.34	61.87	N/A	0.11	0.21	82.00	-0.21	82.00	0.41	0.41	75.45
	177.00	0.77	17.85	N/A	0.86	0.66	177.00	-0.66	95.00	0.61	0.45	-46.34
	269.00	0.35	38.31	N/A	1.66	1.02	268.99	-1.03	92.00	0.50	-0.46	22.24
	363.00	0.46	71.65	N/A	2.01	1.56	362.99	-1.56	94.00	0.27	0.12	35.47
	458.00	0.40	43.20	N/A	2.37	2.15	457.99	-2.15	95.00	0.23	-0.06	-29.95
	552.00	0.13	289.56	N/A	2.64	2.27	551.99	-2.28	94.00	0.50	-0.29	-120.89
	647.00	0.32	283.90	N/A	2.74	1.91	646.98	-1.92	95.00	0.20	0.20	-5.96

	741.00	0.08	290.98	N/A	2.83	1.60	740.98	-1.60	94.00	0.26	-0.26	7.53
	836.00	0.50	45.65	N/A	3.14	1.83	835.98	-1.84	95.00	0.57	0.44	120.71
	931.00	0.26	101.53	N/A	3.39	2.34	930.98	-2.35	95.00	0.44	-0.25	58.82
	1025.00	0.38	61.87	N/A	3.50	2.82	1024.98	-2.83	94.00	0.26	0.13	-42.19
	1120.00	0.13	166.54	N/A	3.54	3.13	1119.98	-3.13	95.00	0.45	-0.26	110.18
	1214.00	0.02	36.57	N/A	3.45	3.16	1213.98	-3.17	94.00	0.15	-0.12	-138.27
	1309.00	0.06	275.76	N/A	3.47	3.12	1308.98	-3.13	95.00	0.08	0.04	-127.17
	1404.00	0.05	328.48	N/A	3.51	3.05	1403.98	-3.06	95.00	0.05	-0.01	55.49
	1498.00	0.29	71.26	N/A	3.62	3.25	1497.98	-3.26	94.00	0.32	0.26	109.34
	1592.00	0.29	20.51	N/A	3.92	3.56	1591.98	-3.57	94.00	0.26	0.00	-53.99
	1687.00	0.33	63.97	N/A	4.26	3.89	1686.98	-3.90	95.00	0.24	0.04	45.75
	1782.00	0.33	77.91	N/A	4.44	4.41	1781.97	-4.41	95.00	0.08	0.00	14.67
	1876.00	0.29	111.18	N/A	4.41	4.89	1875.97	-4.90	94.00	0.19	-0.04	35.39
Tie-In	1924.00	0.41	184.17	N/A	4.20	4.99	1923.97	-5.00	48.00	0.89	0.25	152.06
	1985.00	0.20	205.81	N/A	3.88	4.93	1984.97	-4.94	61.00	0.39	-0.34	35.48
	2080.00	0.04	278.84	N/A	3.74	4.83	2079.97	-4.83	95.00	0.20	-0.17	76.87
	2174.00	0.11	1.46	N/A	3.83	4.80	2173.97	-4.80	94.00	0.12	0.07	87.89
	2269.00	2.58	332.36	N/A	5.82	3.81	2268.94	-3.82	95.00	2.62	2.60	-30.63
	2363.00	4.08	348.69	N/A	10.97	2.17	2362.78	-2.19	94.00	1.87	1.60	17.37
	2458.00	7.41	344.17	N/A	20.18	-0.17	2457.29	0.13	95.00	3.53	3.51	-4.76
	2552.00	7.51	330.00	N/A	31.34	-4.89	2550.50	4.83	94.00	1.96	0.11	-15.07
	2647.00	7.46	322.27	N/A	41.59	-11.77	2644.69	11.69	95.00	1.06	-0.05	-8.14
	2741.00	7.39	317.80	N/A	50.90	-19.57	2737.91	19.47	94.00	0.62	-0.07	-4.76
	2931.00	7.11	318.13	N/A	68.70	-35.62	2926.39	35.49	190.00	0.15	-0.15	0.17
	3025.00	7.02	325.57	N/A	77.77	-42.75	3019.68	42.60	94.00	0.98	-0.10	7.91
	3120.00	6.98	326.52	N/A	87.38	-49.22	3113.97	49.05	95.00	0.13	-0.04	1.00
	3214.00	6.89	328.92	N/A	96.97	-55.28	3207.28	55.09	94.00	0.32	-0.10	2.55
	3309.00	6.77	341.89	N/A	107.17	-59.96	3301.61	59.76	95.00	1.63	-0.13	13.65
	3403.00	6.97	355.94	N/A	118.13	-62.09	3394.94	61.86	94.00	1.80	0.21	14.95
	3498.00	7.14	348.56	N/A	129.66	-63.67	3489.23	63.42	95.00	0.97	0.18	-7.77
	3593.00	7.46	317.26	N/A	139.98	-69.03	3583.49	68.76	95.00	4.15	0.34	-32.95
	3687.00	7.81	284.33	N/A	146.05	-79.36	3676.70	79.08	94.00	4.61	0.37	-35.03
	3782.00	7.06	263.44	N/A	146.98	-91.42	3770.92	91.13	95.00	2.93	-0.79	-21.99
	3876.00	7.04	272.35	N/A	146.56	-102.91	3864.21	102.63	94.00	1.16	-0.02	9.48
	3971.00	6.83	281.85	N/A	147.96	-114.26	3958.52	113.97	95.00	1.23	-0.22	10.00
	4065.00	7.45	302.54	N/A	152.38	-124.87	4051.81	124.57	94.00	2.80	0.66	22.01
	4160.00	7.50	321.93	N/A	160.58	-133.88	4146.01	133.57	95.00	2.64	0.05	20.41
	4254.00	7.57	324.90	N/A	170.47	-141.23	4239.20	140.90	94.00	0.42	0.07	3.16
	4349.00	7.52	329.79	N/A	180.96	-147.95	4333.38	147.60	95.00	0.68	-0.05	5.15
	4443.00	7.49	337.06	N/A	191.92	-153.44	4426.58	153.07	94.00	1.01	-0.03	7.73
	4538.00	7.31	338.46	N/A	203.25	-158.07	4520.79	157.68	95.00	0.27	-0.19	1.47
	4632.00	7.27	338.97	N/A	214.36	-162.40	4614.03	161.99	94.00	0.08	-0.04	0.54
	4727.00	6.29	341.11	N/A	224.90	-166.24	4708.36	165.81	95.00	1.07	-1.03	2.25
	4821.00	4.99	338.46	N/A	233.57	-169.41	4801.91	168.96	94.00	1.41	-1.38	-2.82
	4916.00	2.35	298.46	N/A	238.34	-172.64	4896.72	172.18	95.00	3.71	-2.78	-42.11
	5010.00	1.66	161.44	N/A	237.97	-173.90	4990.69	173.44	94.00	3.98	-0.73	-145.77
	5105.00	0.03	148.56	N/A	236.64	-173.45	5085.68	172.99	95.00	1.72	-1.72	-13.56
	5199.00	0.12	178.10	N/A	236.53	-173.43	5179.68	172.98	94.00	0.10	0.10	31.43
	5294.00	0.09	136.32	N/A	236.37	-173.38	5274.68	172.92	95.00	0.08	-0.03	-43.98
	5388.00	0.03	135.25	N/A	236.30	-173.31	5368.68	172.86	94.00	0.06	-0.06	-1.14
	5483.00	0.07	145.18	N/A	236.24	-173.26	5463.68	172.81	95.00	0.04	0.04	10.45
	5577.00	0.04	172.68	N/A	236.16	-173.22	5557.68	172.77	94.00	0.04	-0.03	29.26
	5672.00	0.10	140.22	N/A	236.06	-173.16	5652.68	172.71	95.00	0.07	0.06	-34.17
	5767.00	0.13	131.72	N/A	235.92	-173.03	5747.68	172.58	95.00	0.04	0.03	-8.95
	5861.00	0.53	183.53	N/A	235.42	-172.98	5841.67	172.53	94.00	0.49	0.43	55.12
	5956.00	7.18	248.34	N/A	232.79	-178.53	5936.42	178.08	95.00	7.34	7.00	68.22
	6050.00	16.66	271.60	N/A	230.99	-197.51	6028.33	197.07	94.00	11.11	10.09	24.74
	6144.00	23.85	286.18	N/A	236.67	-229.29	6116.51	228.84	94.00	9.29	7.65	15.51
	6239.00	30.65	279.49	N/A	246.03	-271.68	6200.94	271.21	95.00	7.84	7.16	-7.04

		6334.00	40.60	271.71	N/A	250.96	-326.63	6278.10	326.15	95.00	11.49	10.47	-8.19
		6428.00	50.26	269.34	N/A	251.46	-393.51	6344.00	393.02	94.00	10.43	10.28	-2.52
		6523.00	61.05	269.44	N/A	250.63	-471.82	6397.51	471.34	95.00	11.36	11.36	0.11
		6617.00	64.81	269.57	N/A	249.91	-555.51	6440.28	555.03	94.00	4.00	4.00	0.14
		6712.00	73.04	269.01	N/A	248.80	-644.07	6474.42	643.59	95.00	8.68	8.66	-0.59
		6806.00	81.66	268.60	N/A	246.88	-735.68	6494.98	735.20	94.00	9.18	9.17	-0.44
		6901.00	89.91	269.68	N/A	245.46	-830.33	6501.96	829.86	95.00	8.76	8.68	1.14
		6995.00	90.00	267.97	N/A	243.54	-924.31	6502.03	923.84	94.00	1.82	0.10	-1.82
		7090.00	89.85	267.36	N/A	239.67	-1019.23	6502.16	1018.76	95.00	0.66	-0.16	-0.64
		7185.00	89.94	267.50	N/A	235.41	-1114.13	6502.33	1113.68	95.00	0.18	0.09	0.15
		7279.00	90.03	268.53	N/A	232.15	-1208.07	6502.36	1207.63	94.00	1.10	0.10	1.10
		7374.00	89.82	268.75	N/A	229.90	-1303.05	6502.48	1302.60	95.00	0.32	-0.22	0.23
		7469.00	89.85	268.74	N/A	227.81	-1398.02	6502.75	1397.58	95.00	0.03	0.03	-0.01
		7563.00	89.85	269.13	N/A	226.07	-1492.01	6503.00	1491.57	94.00	0.41	0.00	0.41
		7658.00	89.91	268.39	N/A	224.01	-1586.98	6503.20	1586.55	95.00	0.78	0.06	-0.78
		7752.00	89.88	268.57	N/A	221.52	-1680.95	6503.37	1680.52	94.00	0.19	-0.03	0.19
		7846.00	89.88	268.80	N/A	219.36	-1774.92	6503.57	1774.50	94.00	0.24	0.00	0.24
		7941.00	89.75	267.87	N/A	216.60	-1869.88	6503.88	1869.46	95.00	0.99	-0.14	-0.98
		8035.00	90.00	267.95	N/A	213.17	-1963.82	6504.08	1963.41	94.00	0.28	0.27	0.09
		8130.00	89.85	267.92	N/A	209.75	-2058.76	6504.20	2058.35	95.00	0.16	-0.16	-0.03
		8224.00	90.06	268.60	N/A	206.90	-2152.71	6504.28	2152.31	94.00	0.76	0.22	0.72
		8319.00	89.78	269.33	N/A	205.18	-2247.70	6504.41	2247.30	95.00	0.82	-0.29	0.77
		8413.00	89.78	268.44	N/A	203.35	-2341.68	6504.77	2341.28	94.00	0.95	0.00	-0.95
		8508.00	89.72	265.51	N/A	198.34	-2436.54	6505.19	2436.15	95.00	3.08	-0.06	-3.08
		8602.00	89.69	263.95	N/A	189.70	-2530.13	6505.67	2529.76	94.00	1.66	-0.03	-1.66
		8697.00	89.85	265.38	N/A	180.87	-2624.72	6506.05	2624.37	95.00	1.51	0.17	1.51
		8791.00	89.66	268.71	N/A	176.03	-2718.58	6506.45	2718.24	94.00	3.55	-0.20	3.54
		8885.00	89.66	267.56	N/A	172.97	-2812.53	6507.01	2812.19	94.00	1.22	0.00	-1.22
		8980.00	89.72	261.37	N/A	163.81	-2907.04	6507.53	2906.72	95.00	6.52	0.06	-6.52
		9074.00	89.75	262.35	N/A	150.50	-3000.09	6507.96	2999.79	94.00	1.04	0.03	1.04
		9169.00	89.91	264.89	N/A	139.94	-3094.49	6508.24	3094.22	95.00	2.68	0.17	2.67
		9263.00	89.69	267.72	N/A	133.89	-3188.29	6508.57	3188.02	94.00	3.02	-0.23	3.01
		9358.00	89.63	266.76	N/A	129.31	-3283.17	6509.13	3282.92	95.00	1.01	-0.06	-1.01
		9452.00	89.69	267.57	N/A	124.66	-3377.05	6509.69	3376.81	94.00	0.86	0.06	0.86
		9547.00	89.78	265.59	N/A	119.00	-3471.88	6510.13	3471.64	95.00	2.09	0.09	-2.08
		9641.00	89.51	265.24	N/A	111.48	-3565.58	6510.71	3565.36	94.00	0.47	-0.29	-0.37
		9735.00	89.57	264.34	N/A	102.95	-3659.18	6511.47	3658.98	94.00	0.96	0.06	-0.96
		9830.00	91.11	268.71	N/A	97.19	-3753.98	6510.91	3753.79	95.00	4.88	1.62	4.60
		9924.00	91.23	274.67	N/A	99.96	-3847.88	6508.98	3847.68	94.00	6.34	0.13	6.34
		10019.00	91.29	277.24	N/A	109.81	-3942.34	6506.89	3942.12	95.00	2.71	0.06	2.71
		10114.00	91.54	276.94	N/A	121.54	-4036.58	6504.55	4036.34	95.00	0.41	0.26	-0.32
		10208.00	91.42	275.43	N/A	131.66	-4130.00	6502.12	4129.74	94.00	1.61	-0.13	-1.61
		10303.00	89.82	269.08	N/A	135.39	-4224.87	6501.09	4224.60	95.00	6.89	-1.68	-6.68
		10397.00	90.34	265.62	N/A	131.05	-4318.75	6500.96	4318.49	94.00	3.72	0.55	-3.68
		10492.00	90.00	265.96	N/A	124.07	-4413.50	6500.68	4413.25	95.00	0.51	-0.36	0.36
		10587.00	90.40	264.39	N/A	116.08	-4508.16	6500.35	4507.93	95.00	1.71	0.42	-1.65
		10681.00	89.85	264.54	N/A	107.02	-4601.72	6500.14	4601.50	94.00	0.61	-0.59	0.16
		10776.00	90.25	265.82	N/A	99.04	-4696.38	6500.06	4696.18	95.00	1.41	0.42	1.35
		10870.00	90.18	267.48	N/A	93.54	-4790.21	6499.71	4790.03	94.00	1.77	-0.07	1.77
		10965.00	89.94	268.51	N/A	90.22	-4885.16	6499.61	4884.97	95.00	1.11	-0.25	1.08
		11059.00	89.85	270.82	N/A	89.67	-4979.15	6499.78	4978.97	94.00	2.46	-0.10	2.46
		11154.00	90.03	271.42	N/A	91.53	-5074.13	6499.88	5073.94	95.00	0.66	0.19	0.63
		11248.00	90.09	270.03	N/A	92.72	-5168.12	6499.78	5167.93	94.00	1.48	0.06	-1.48
		11343.00	90.15	268.63	N/A	91.60	-5263.11	6499.58	5262.92	95.00	1.48	0.06	-1.47
		11438.00	89.91	271.36	N/A	91.60	-5358.10	6499.53	5357.91	95.00	2.88	-0.25	2.87
		11532.00	90.00	271.75	N/A	94.15	-5452.07	6499.61	5451.87	94.00	0.43	0.10	0.41
		11627.00	90.00	268.26	N/A	94.16	-5547.05	6499.61	5546.86	95.00	3.67	0.00	-3.67
		11721.00	89.91	266.17	N/A	89.59	-5640.93	6499.68	5640.75	94.00	2.23	-0.10	-2.22
		11815.00	89.82	266.45	N/A	83.54	-5734.74	6499.90	5734.57	94.00	0.31	-0.10	0.30

	11910.00	90.03	263.42	N/A	75.15	-5829.36	6500.03	5829.20	95.00	3.20	0.22	-3.19
	12005.00	90.06	265.23	N/A	65.76	-5923.89	6499.95	5923.75	95.00	1.91	0.03	1.91
	12099.00	90.09	265.22	N/A	57.93	-6017.56	6499.83	6017.44	94.00	0.03	0.03	-0.01
	12194.00	90.06	266.30	N/A	50.91	-6112.30	6499.70	6112.19	95.00	1.14	-0.03	1.14
	12288.00	90.15	267.75	N/A	46.03	-6206.17	6499.53	6206.07	94.00	1.55	0.10	1.54
	12383.00	90.28	268.13	N/A	42.62	-6301.11	6499.17	6301.01	95.00	0.42	0.14	0.40
	12477.00	89.97	268.61	N/A	39.94	-6395.07	6498.97	6394.98	94.00	0.61	-0.33	0.51
	12572.00	90.03	268.76	N/A	37.76	-6490.04	6498.97	6489.96	95.00	0.17	0.06	0.16
	12666.00	89.85	270.67	N/A	37.30	-6584.04	6499.07	6583.96	94.00	2.04	-0.19	2.03
	12761.00	89.94	269.84	N/A	37.72	-6679.04	6499.24	6678.95	95.00	0.88	0.09	-0.87
	12855.00	89.88	265.95	N/A	34.27	-6772.96	6499.39	6772.88	94.00	4.14	-0.06	-4.14
	12950.00	90.03	267.14	N/A	28.54	-6867.78	6499.46	6867.71	95.00	1.26	0.16	1.25
	13045.00	89.97	271.78	N/A	27.65	-6962.75	6499.46	6962.68	95.00	4.88	-0.06	4.88
	13139.00	89.97	272.03	N/A	30.77	-7056.70	6499.51	7056.63	94.00	0.27	0.00	0.27
	13234.00	90.00	270.07	N/A	32.51	-7151.68	6499.54	7151.60	95.00	2.06	0.03	-2.06
	13328.00	90.00	268.12	N/A	31.03	-7245.66	6499.54	7245.59	94.00	2.07	0.00	-2.07
	13423.00	90.06	271.52	N/A	30.73	-7340.65	6499.49	7340.57	95.00	3.58	0.06	3.58
	13517.00	90.00	275.90	N/A	36.81	-7434.43	6499.44	7434.34	94.00	4.66	-0.06	4.66
	13612.00	90.03	276.05	N/A	46.70	-7528.91	6499.41	7528.81	95.00	0.16	0.03	0.16
	13706.00	89.97	272.83	N/A	53.97	-7622.62	6499.41	7622.50	94.00	3.43	-0.06	-3.43
	13801.00	89.82	268.88	N/A	55.39	-7717.59	6499.59	7717.47	95.00	4.16	-0.16	-4.16
	13895.00	89.88	268.96	N/A	53.62	-7811.57	6499.83	7811.45	94.00	0.11	0.06	0.09
	13990.00	89.85	268.96	N/A	51.90	-7906.55	6500.06	7906.44	95.00	0.03	-0.03	0.00
	14084.00	89.88	267.73	N/A	49.18	-8000.51	6500.28	8000.40	94.00	1.31	0.03	-1.31
	14179.00	89.88	268.31	N/A	45.90	-8095.46	6500.48	8095.35	95.00	0.61	0.00	0.61
	14273.00	89.78	263.74	N/A	39.38	-8189.20	6500.76	8189.11	94.00	4.86	-0.11	-4.86
	14368.00	90.03	260.86	N/A	26.66	-8283.34	6500.92	8283.27	95.00	3.04	0.26	-3.03
	14462.00	89.94	265.84	N/A	15.78	-8376.68	6500.94	8376.63	94.00	5.30	-0.10	5.30
	14557.00	89.91	265.03	N/A	8.21	-8471.37	6501.06	8471.34	95.00	0.85	-0.03	-0.85
	14652.00	90.06	266.49	N/A	1.19	-8566.11	6501.09	8566.09	95.00	1.54	0.16	1.54
	14746.00	90.95	270.09	N/A	-1.61	-8660.05	6500.26	8660.04	94.00	3.94	0.95	3.83
	14841.00	90.92	271.88	N/A	0.02	-8755.02	6498.71	8755.00	95.00	1.88	-0.03	1.88
	14935.00	91.05	272.34	N/A	3.48	-8848.94	6497.09	8848.92	94.00	0.51	0.14	0.49
	15030.00	91.23	271.48	N/A	6.64	-8943.87	6495.20	8943.84	95.00	0.92	0.19	-0.91
	15124.00	89.94	269.38	N/A	7.35	-9037.85	6494.24	9037.82	94.00	2.62	-1.37	-2.23
	15219.00	90.31	266.35	N/A	3.81	-9132.78	6494.04	9132.75	95.00	3.21	0.39	-3.19
	15313.00	89.94	260.93	N/A	-6.60	-9226.16	6493.83	9226.16	94.00	5.78	-0.39	-5.77
	15408.00	90.09	267.39	N/A	-16.26	-9320.62	6493.81	9320.63	95.00	6.80	0.16	6.80
	15502.00	90.06	268.29	N/A	-19.80	-9414.55	6493.68	9414.57	94.00	0.96	-0.03	0.96
	15596.00	89.82	266.57	N/A	-24.02	-9508.45	6493.78	9508.48	94.00	1.85	-0.26	-1.83
	15691.00	90.03	266.12	N/A	-30.07	-9603.26	6493.91	9603.30	95.00	0.52	0.22	-0.47
	15785.00	89.60	267.11	N/A	-35.62	-9697.09	6494.21	9697.14	94.00	1.15	-0.46	1.05
	15880.00	89.57	261.68	N/A	-44.90	-9791.60	6494.90	9791.67	95.00	5.72	-0.03	-5.72
	15974.00	89.94	261.97	N/A	-58.26	-9884.65	6495.30	9884.74	94.00	0.50	0.39	0.31
	16069.00	89.88	265.42	N/A	-68.70	-9979.06	6495.45	9979.17	95.00	3.63	-0.06	3.63
	16163.00	90.06	270.67	N/A	-71.90	-10072.97	6495.50	10073.09	94.00	5.59	0.19	5.59
	16258.00	89.94	271.50	N/A	-70.10	-10167.95	6495.50	10168.07	95.00	0.88	-0.13	0.87
	16352.00	90.00	270.35	N/A	-68.58	-10261.94	6495.55	10262.05	94.00	1.23	0.06	-1.22
	16421.00	90.18	268.53	N/A	-69.26	-10330.93	6495.44	10331.04	69.00	2.65	0.26	-2.64
Projection	16445.00	90.18	268.53	N/A	-69.87	-10354.92	6495.36	10355.04	24.00	0.00	0.00	0.00