

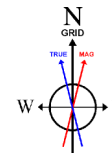
# NOBLE ENERGY, INC

Location: COLORADO Slot: SLOT#08 WELLS RANCH AF07-651 (2350'FNL & 175'FEL, SEC.08)  
 Field: WELD COUNTY (NOBLE NAD 83 GRID) Well: WELLS RANCH AF07-651  
 Facility: SEC.08-T05N-R62W Wellbore: WELLS RANCH AF07-651 PWB

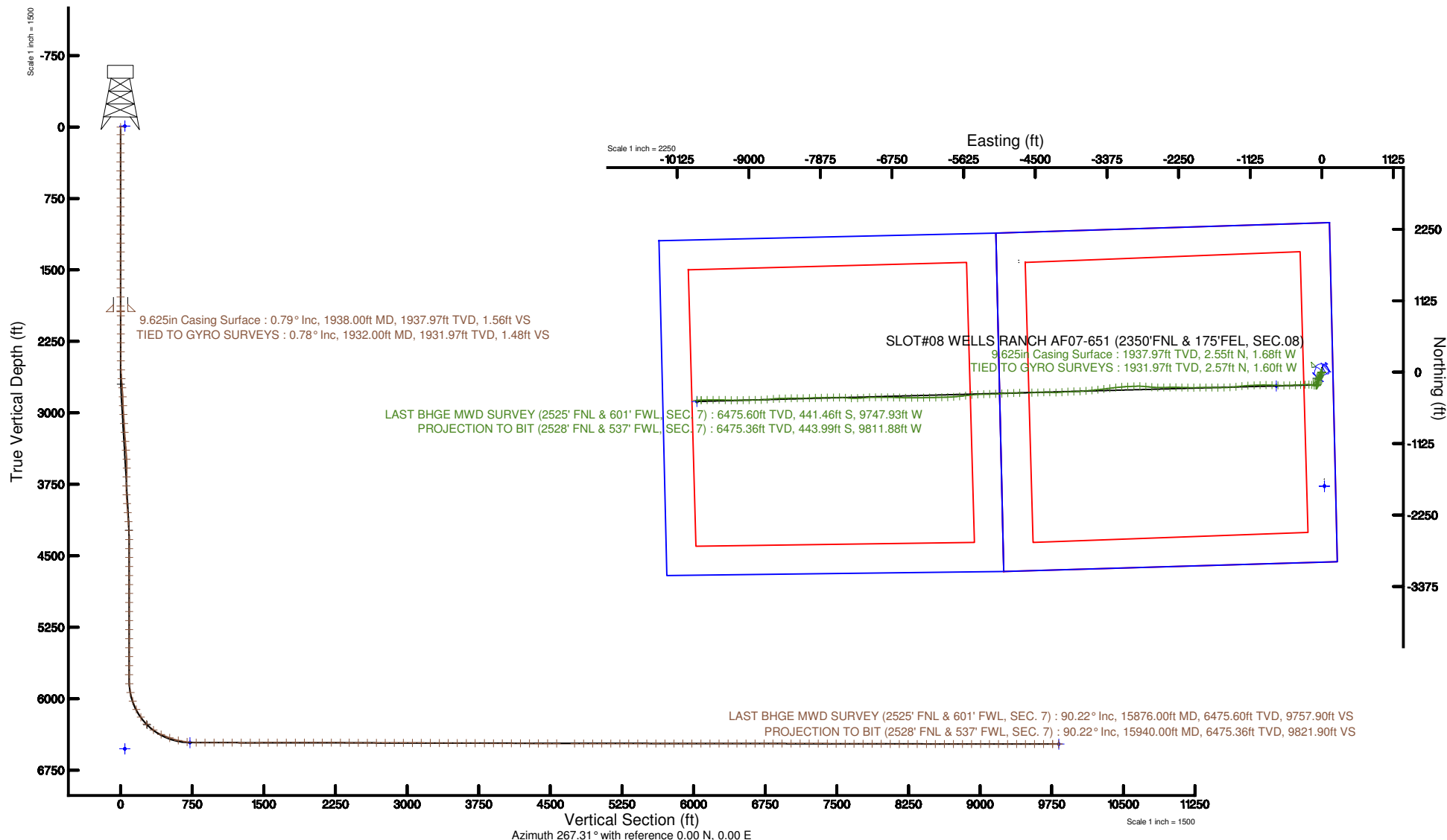
Plot reference wellbore is WELLS RANCH AF07-651 PWB (REV A.0)	Grid System: NAD83; Lambert Colorado SP; Northern Zone (2011) US feet
True vertical depths are referenced to RIG (2016) (RIG)	North Reference: Grid north
Measured depths are referenced to RIG (2016) (RIG)	Scale: True distance
RIG (2016) (RIG) to Mean Sea Level: 4724 feet	Depth: in feet
Mean Sea Level to Mud line (M Sea Level) WELLS RANCH AF07-651 (2016) (M Sea Level) (M Sea Level) (M Sea Level)	Created by: cadet@nec on 2017-08-02
Coordinates are in feet referenced to Sea	Database: Owner

## Comments

SURFACE LOCATION: SENE  
 40.41507N  
 104.33836W  
 API #: 05-123-44248



BGGM (1900.0 to 2018.0) Dip: 66.96° Field: 52513.1 nT  
 Magnetic North is 9.15 degrees East of True North (at 6/6/2017)  
 Grid North is 0.75 degrees East of True North  
 To correct azimuth from True to Grid subtract 0.75 degrees  
 To correct azimuth from Magnetic to Grid add 7.40 degrees





# Actual Wellpath Report

WELLS RANCH AF07-651 AWP

Page n of nn



REFERENCE WELLPATH IDENTIFICATION			
Operator	NOBLE ENERGY, INC	Slot	SLOT#08 WELLS RANCH AF07-651 (2350'FNL & 175'FEL, SEC.08)
Area	COLORADO	Well	WELLS RANCH AF07-651
Field	WELD COUNTY (NOBLE NAD 83 GRID)	Wellbore	WELLS RANCH AF07-651 AWB
Facility	SEC.08-T05N-R62W		

REPORT SETUP INFORMATION			
Projection System	NAD83 / Lambert Colorado SP, Northern Zone (501), US feet	Software System	WellArchitect® 5.1
North Reference	Grid	User	Cantryat
Scale	0.999961	Report Generated	8/2/2017 at 11:16:52 AM
Convergence at slot	0.75° East	Database/Source file	Denver/WELLS_RANCH_AF07-651_AWP.xml

WELLPATH LOCATION						
	Local coordinates		Grid coordinates		Geographic coordinates	
	North[ft]	East[ft]	Easting[US ft]	Northing[US ft]	Latitude	Longitude
Slot Location	-1727.04	4759.29	3323447.60	1396168.97	40°24'54.252"N	104°20'18.096"W
Facility Reference Pt			3318688.50	1397895.93	40°25'11.928"N	104°21'19.332"W
Field Reference Pt			3000000.00	4454105.15	48°46'34.315"N	105°30'00.000"W

WELLPATH DATUM			
Calculation method	Minimum curvature	RIG (30'KB) (RKB) to Facility Vertical Datum	4734.00ft
Horizontal Reference Pt	Slot	RIG (30'KB) (RKB) to Mean Sea Level	4734.00ft
Vertical Reference Pt	RIG (30'KB) (RKB)	RIG (30'KB) (RKB) to Mud Line at Slot (SLOT#08 WELLS RANCH AF07-651 (2350'FNL & 175'FEL, SEC.08))	4734.00ft
MD Reference Pt	RIG (30'KB) (RKB)	Section Origin	N 0.00, E 0.00 ft
Field Vertical Reference	Mean Sea Level	Section Azimuth	267.31°



# Actual Wellpath Report

WELLS RANCH AF07-651 AWP

Page n of nn



REFERENCE WELLPATH IDENTIFICATION			
Operator	NOBLE ENERGY, INC	Slot	SLOT#08 WELLS RANCH AF07-651 (2350'FNL & 175'FEL, SEC.08)
Area	COLORADO	Well	WELLS RANCH AF07-651
Field	WELD COUNTY (NOBLE NAD 83 GRID)	Wellbore	WELLS RANCH AF07-651 AWB
Facility	SEC.08-T05N-R62W		

## WELLPATH DATA (170 stations)

MD [ft]	Inclination [°]	Azimuth [°]	TVD [ft]	Vert Sect [ft]	North [ft]	East [ft]	DLS [°/100ft]	Comments
0.00	0.000	103.700	0.00	0.00	0.00	0.00	0.00	
82.00	0.250	103.700	82.00	-0.17	-0.04	0.17	0.30	
177.00	0.070	267.470	177.00	-0.31	-0.09	0.32	0.33	
272.00	0.640	150.080	272.00	-0.50	-0.56	0.52	0.71	
366.00	0.120	178.970	366.00	-0.73	-1.11	0.79	0.57	
461.00	0.260	47.990	460.99	-0.90	-1.07	0.95	0.37	
556.00	0.110	264.380	555.99	-0.97	-0.93	1.02	0.37	
650.00	0.520	273.490	649.99	-0.46	-0.91	0.50	0.44	
745.00	0.310	10.030	744.99	-0.09	-0.63	0.12	0.67	
839.00	0.380	323.390	838.99	0.03	-0.13	-0.02	0.30	
934.00	0.430	298.490	933.99	0.51	0.29	-0.53	0.19	
1029.00	0.510	336.800	1028.98	0.96	0.85	-1.00	0.33	
1123.00	0.170	346.990	1122.98	1.14	1.37	-1.20	0.37	
1218.00	0.060	295.820	1217.98	1.20	1.53	-1.28	0.15	
1312.00	0.250	25.440	1311.98	1.15	1.73	-1.23	0.27	
1407.00	0.100	356.230	1406.98	1.05	2.00	-1.15	0.18	
1501.00	0.220	359.210	1500.98	1.05	2.27	-1.16	0.13	
1596.00	0.340	11.550	1595.98	0.97	2.73	-1.10	0.14	
1690.00	0.380	29.850	1689.98	0.74	3.27	-0.89	0.13	
1785.00	0.210	195.060	1784.98	0.62	3.37	-0.78	0.62	
1879.00	0.530	218.960	1878.98	0.96	2.87	-1.10	0.37	
1932.00	0.780	252.610	1931.97	1.48	2.57	-1.60	0.85	TIED TO GYRO SURVEYS
1981.00	0.860	261.350	1980.97	2.16	2.42	-2.28	0.30	
2076.00	0.000	7.130	2075.96	2.87	2.31	-2.98	0.91	
2171.00	0.030	99.560	2170.96	2.85	2.31	-2.96	0.03	
2265.00	0.000	7.130	2264.96	2.82	2.30	-2.94	0.03	
2360.00	0.030	348.770	2359.96	2.83	2.33	-2.94	0.03	
2454.00	0.090	219.410	2453.96	2.88	2.29	-2.99	0.12	
2549.00	3.090	214.600	2548.92	4.48	0.13	-4.49	3.16	
2643.00	6.990	218.070	2642.54	9.76	-6.46	-9.46	4.16	



# Actual Wellpath Report

WELLS RANCH AF07-651 AWP

Page n of nn



REFERENCE WELLPATH IDENTIFICATION			
Operator	NOBLE ENERGY, INC	Slot	SLOT#08 WELLS RANCH AF07-651 (2350'FNL & 175'FEL, SEC.08)
Area	COLORADO	Well	WELLS RANCH AF07-651
Field	WELD COUNTY (NOBLE NAD 83 GRID)	Wellbore	WELLS RANCH AF07-651 AWB
Facility	SEC.08-T05N-R62W		

## WELLPATH DATA (170 stations)

MD [ft]	Inclination [°]	Azimuth [°]	TVD [ft]	Vert Sect [ft]	North [ft]	East [ft]	DLS [°/100ft]	Comments
2738.00	8.320	207.160	2736.69	16.95	-17.13	-16.16	2.07	
2833.00	8.410	193.570	2830.69	22.32	-30.00	-20.93	2.08	
2927.00	8.250	194.610	2923.70	26.25	-43.21	-24.25	0.23	
3022.00	8.410	199.920	3017.70	30.95	-56.34	-28.33	0.83	
3117.00	8.280	202.620	3111.69	36.55	-69.18	-33.33	0.43	
3211.00	7.980	206.080	3204.75	42.58	-81.29	-38.80	0.61	
3306.00	7.420	215.170	3298.89	49.52	-92.23	-45.24	1.41	
3400.00	7.420	212.170	3392.11	56.72	-102.33	-51.96	0.41	
3495.00	8.560	200.390	3486.19	62.99	-114.15	-57.69	2.09	
3589.00	8.850	174.200	3579.14	65.35	-127.91	-59.40	4.19	
3684.00	8.250	162.180	3673.10	63.17	-141.67	-56.58	1.98	
3778.00	8.320	173.640	3766.12	60.98	-154.85	-53.76	1.76	
3873.00	8.320	191.840	3860.14	62.26	-168.41	-54.41	2.76	
3967.00	8.270	208.540	3953.17	67.48	-181.00	-59.03	2.55	
4062.00	7.220	215.420	4047.30	74.70	-191.87	-65.76	1.47	
4157.00	5.800	222.560	4141.69	81.80	-200.27	-72.46	1.72	
4251.00	3.780	228.090	4235.36	87.57	-205.84	-77.98	2.20	
4346.00	0.440	195.590	4330.28	90.11	-208.29	-80.41	3.60	
4440.00	0.090	39.870	4424.28	90.18	-208.58	-80.46	0.56	
4534.00	0.100	169.650	4518.28	90.12	-208.60	-80.40	0.18	
4629.00	0.030	94.620	4613.28	90.08	-208.68	-80.36	0.10	
4723.00	0.180	111.400	4707.28	89.92	-208.74	-80.20	0.16	
4818.00	0.000	97.120	4802.28	89.79	-208.79	-80.06	0.19	
4912.00	0.060	118.300	4896.28	89.74	-208.82	-80.02	0.06	
5007.00	0.030	128.040	4991.28	89.68	-208.86	-79.95	0.03	
5101.00	0.070	175.570	5085.28	89.66	-208.93	-79.93	0.06	
5196.00	0.040	110.370	5180.28	89.63	-209.00	-79.89	0.07	
5290.00	0.070	168.930	5274.28	89.59	-209.07	-79.85	0.06	
5385.00	0.060	120.600	5369.28	89.54	-209.15	-79.80	0.06	
5480.00	0.140	48.170	5464.28	89.41	-209.10	-79.67	0.14	



# Actual Wellpath Report

WELLS RANCH AF07-651 AWP

Page n of nn



REFERENCE WELLPATH IDENTIFICATION			
Operator	NOBLE ENERGY, INC	Slot	SLOT#08 WELLS RANCH AF07-651 (2350'FNL & 175'FEL, SEC.08)
Area	COLORADO	Well	WELLS RANCH AF07-651
Field	WELD COUNTY (NOBLE NAD 83 GRID)	Wellbore	WELLS RANCH AF07-651 AWB
Facility	SEC.08-T05N-R62W		

## WELLPATH DATA (170 stations)

MD [ft]	Inclination [°]	Azimuth [°]	TVD [ft]	Vert Sect [ft]	North [ft]	East [ft]	DLS [°/100ft]	Comments
5574.00	0.040	26.240	5558.28	89.30	-208.99	-79.57	0.11	
5669.00	0.040	117.120	5653.28	89.26	-208.98	-79.52	0.06	
5763.00	0.060	67.320	5747.28	89.18	-208.97	-79.45	0.05	
5858.00	3.500	237.840	5842.22	91.66	-210.50	-81.86	3.75	
5952.00	11.430	265.790	5935.37	103.49	-212.71	-93.60	9.04	
6046.00	20.010	282.260	6025.81	128.40	-209.97	-118.66	10.20	
6141.00	27.370	283.560	6112.75	165.12	-201.39	-155.83	7.77	
6236.00	34.330	272.000	6194.33	212.88	-195.32	-203.93	9.59	
6330.00	44.160	266.790	6267.06	272.20	-196.23	-263.27	11.02	
6425.00	54.360	266.090	6328.97	344.08	-200.73	-335.01	10.75	
6519.00	65.820	267.550	6375.77	425.42	-205.18	-416.23	12.27	
6614.00	69.550	268.170	6411.84	513.28	-208.46	-504.04	3.97	
6708.00	76.860	269.690	6438.98	603.17	-210.11	-593.95	7.93	
6803.00	83.950	271.580	6454.81	696.62	-209.06	-687.55	7.72	
6898.00	89.690	272.600	6460.07	791.10	-205.60	-782.30	6.14	
6992.00	90.030	270.890	6460.30	884.82	-202.74	-876.26	1.85	
7087.00	89.660	268.210	6460.56	979.73	-203.48	-971.24	2.85	
7181.00	89.660	267.260	6461.12	1073.73	-207.20	-1065.17	1.01	
7276.00	89.660	267.090	6461.68	1168.73	-211.88	-1160.05	0.18	
7371.00	89.660	263.920	6462.25	1263.67	-219.33	-1254.74	3.34	
7465.00	90.120	263.720	6462.43	1357.49	-229.45	-1348.20	0.53	
7560.00	90.180	266.150	6462.18	1452.40	-237.83	-1442.82	2.56	
7654.00	90.060	268.290	6461.98	1546.40	-242.39	-1536.70	2.28	
7749.00	90.680	270.090	6461.37	1641.34	-243.73	-1631.69	2.00	
7843.00	89.970	270.520	6460.83	1735.21	-243.23	-1725.68	0.88	
7938.00	89.820	270.790	6461.01	1830.05	-242.15	-1820.68	0.33	
8032.00	89.970	268.490	6461.18	1923.96	-242.74	-1914.67	2.45	
8127.00	89.910	269.640	6461.28	2018.92	-244.29	-2009.65	1.21	
8221.00	89.970	271.250	6461.38	2112.77	-243.56	-2103.65	1.71	
8315.00	89.750	271.710	6461.61	2206.52	-241.13	-2197.62	0.54	



# Actual Wellpath Report

WELLS RANCH AF07-651 AWP

Page n of nn



REFERENCE WELLPATH IDENTIFICATION			
Operator	NOBLE ENERGY, INC	Slot	SLOT#08 WELLS RANCH AF07-651 (2350'FNL & 175'FEL, SEC.08)
Area	COLORADO	Well	WELLS RANCH AF07-651
Field	WELD COUNTY (NOBLE NAD 83 GRID)	Wellbore	WELLS RANCH AF07-651 AWB
Facility	SEC.08-T05N-R62W		

## WELLPATH DATA (170 stations)

MD [ft]	Inclination [°]	Azimuth [°]	TVD [ft]	Vert Sect [ft]	North [ft]	East [ft]	DLS [°/100ft]	Comments
8410.00	89.780	270.330	6462.00	2301.32	-239.44	-2292.60	1.45	
8504.00	89.660	269.240	6462.46	2395.23	-239.79	-2386.59	1.17	
8599.00	89.780	267.990	6462.92	2490.20	-242.09	-2481.56	1.32	
8693.00	90.000	271.740	6463.10	2584.09	-242.31	-2575.55	4.00	
8788.00	89.940	275.550	6463.15	2678.49	-236.27	-2670.34	4.01	
8882.00	89.850	275.740	6463.32	2771.50	-227.02	-2763.88	0.22	
8976.00	89.720	271.240	6463.68	2864.93	-221.30	-2857.68	4.79	
9071.00	89.820	266.660	6464.06	2959.86	-223.04	-2952.64	4.82	
9166.00	89.880	268.600	6464.31	3054.85	-226.97	-3047.55	2.04	
9260.00	89.820	264.220	6464.55	3148.82	-232.86	-3141.35	4.66	
9354.00	89.690	264.010	6464.96	3242.67	-242.49	-3234.85	0.26	
9449.00	89.850	262.200	6465.34	3337.41	-253.90	-3329.16	1.91	
9543.00	89.750	263.220	6465.66	3431.11	-265.83	-3422.40	1.09	
9637.00	89.750	263.820	6466.07	3524.90	-276.43	-3515.79	0.64	
9732.00	89.750	263.570	6466.49	3619.71	-286.87	-3610.22	0.26	
9826.00	89.750	265.700	6466.90	3713.60	-295.66	-3703.80	2.27	
9921.00	89.720	267.930	6467.34	3808.59	-300.93	-3798.65	2.35	
10016.00	89.630	268.090	6467.88	3903.58	-304.23	-3893.59	0.19	
10110.00	89.850	267.250	6468.30	3997.58	-308.05	-3987.51	0.92	
10205.00	89.780	264.640	6468.61	4092.55	-314.77	-4082.26	2.75	
10299.00	89.540	269.430	6469.17	4186.52	-319.63	-4176.11	5.10	
10394.00	89.880	272.350	6469.65	4281.32	-318.16	-4271.08	3.09	
10488.00	89.970	268.690	6469.77	4375.15	-317.30	-4365.06	3.89	
10583.00	89.940	268.290	6469.85	4470.13	-319.81	-4460.03	0.42	
10678.00	89.880	268.800	6470.00	4565.11	-322.22	-4555.00	0.54	
10867.00	89.850	268.460	6470.44	4754.06	-326.74	-4743.94	0.18	
10961.00	89.880	268.060	6470.66	4848.05	-329.59	-4837.90	0.43	
11056.00	90.000	267.450	6470.76	4943.04	-333.31	-4932.83	0.65	
11150.00	90.030	267.460	6470.74	5037.04	-337.49	-5026.73	0.03	
11245.00	89.910	267.740	6470.79	5132.04	-341.47	-5121.65	0.32	



# Actual Wellpath Report

WELLS RANCH AF07-651 AWP

Page n of nn



## REFERENCE WELLPATH IDENTIFICATION

Operator	NOBLE ENERGY, INC	Slot	SLOT#08 WELLS RANCH AF07-651 (2350'FNL & 175'FEL, SEC.08)
Area	COLORADO	Well	WELLS RANCH AF07-651
Field	WELD COUNTY (NOBLE NAD 83 GRID)	Wellbore	WELLS RANCH AF07-651 AWB
Facility	SEC.08-T05N-R62W		

## WELLPATH DATA (170 stations)

MD [ft]	Inclination [°]	Azimuth [°]	TVD [ft]	Vert Sect [ft]	North [ft]	East [ft]	DLS [°/100ft]	Comments
11340.00	89.910	267.650	6470.94	5227.04	-345.29	-5216.57	0.09	
11434.00	89.940	269.830	6471.06	5321.00	-347.35	-5310.55	2.32	
11529.00	90.060	267.280	6471.06	5415.97	-349.75	-5405.51	2.69	
11623.00	90.060	263.270	6470.96	5509.89	-357.49	-5499.17	4.27	
11718.00	89.880	263.140	6471.01	5604.65	-368.73	-5593.50	0.23	
11812.00	90.060	263.520	6471.06	5698.42	-379.65	-5686.87	0.45	
11907.00	90.090	265.890	6470.94	5793.32	-388.42	-5781.45	2.49	
12001.00	89.910	267.750	6470.94	5887.31	-393.63	-5875.30	1.99	
12096.00	90.280	269.200	6470.78	5982.29	-396.16	-5970.27	1.58	
12190.00	90.030	268.940	6470.53	6076.24	-397.68	-6064.25	0.38	
12285.00	90.180	268.890	6470.35	6171.21	-399.48	-6159.24	0.17	
12379.00	89.970	268.230	6470.23	6265.18	-401.84	-6253.21	0.74	
12474.00	89.970	268.960	6470.28	6360.16	-404.17	-6348.18	0.77	
12568.00	89.880	270.680	6470.40	6454.07	-404.47	-6442.17	1.83	
12663.00	90.150	271.670	6470.38	6548.85	-402.52	-6537.15	1.08	
12757.00	90.090	271.770	6470.18	6642.57	-399.70	-6631.11	0.12	
12852.00	89.940	271.160	6470.15	6737.32	-397.27	-6726.08	0.66	
12946.00	90.060	270.480	6470.15	6831.14	-395.93	-6820.07	0.73	
13041.00	89.720	269.830	6470.34	6926.02	-395.67	-6915.07	0.77	
13136.00	89.850	270.780	6470.69	7020.89	-395.16	-7010.06	1.01	
13230.00	89.720	267.730	6471.05	7114.82	-396.38	-7104.04	3.25	
13325.00	89.750	265.090	6471.49	7209.80	-402.33	-7198.85	2.78	
13419.00	89.880	266.310	6471.79	7303.76	-409.38	-7292.58	1.31	
13514.00	89.750	273.550	6472.10	7398.60	-409.50	-7387.52	7.62	
13608.00	89.850	274.820	6472.42	7491.92	-402.64	-7481.26	1.36	
13703.00	89.720	270.570	6472.78	7586.48	-398.17	-7576.14	4.48	
13797.00	89.780	268.280	6473.19	7680.41	-399.11	-7670.13	2.44	
13892.00	89.780	269.410	6473.56	7775.37	-401.03	-7765.10	1.19	
13986.00	89.820	268.840	6473.88	7869.32	-402.46	-7859.09	0.61	
14081.00	89.690	268.220	6474.29	7964.30	-404.90	-7954.06	0.67	



# Actual Wellpath Report

WELLS RANCH AF07-651 AWP

Page n of nn



REFERENCE WELLPATH IDENTIFICATION			
Operator	NOBLE ENERGY, INC	Slot	SLOT#08 WELLS RANCH AF07-651 (2350'FNL & 175'FEL, SEC.08)
Area	COLORADO	Well	WELLS RANCH AF07-651
Field	WELD COUNTY (NOBLE NAD 83 GRID)	Wellbore	WELLS RANCH AF07-651 AWB
Facility	SEC.08-T05N-R62W		

## WELLPATH DATA (170 stations)

MD [ft]	Inclination [°]	Azimuth [°]	TVD [ft]	Vert Sect [ft]	North [ft]	East [ft]	DLS [°/100ft]	Comments
14175.00	89.780	268.200	6474.73	8058.29	-407.84	-8048.01	0.10	
14270.00	89.780	269.670	6475.09	8153.25	-409.60	-8142.99	1.55	
14364.00	89.750	270.160	6475.48	8247.15	-409.74	-8236.99	0.52	
14459.00	89.910	268.740	6475.76	8342.08	-410.66	-8331.98	1.50	
14554.00	89.820	268.030	6475.98	8437.06	-413.33	-8426.95	0.75	
14648.00	89.880	268.740	6476.23	8531.04	-415.98	-8520.91	0.76	
14742.00	89.970	263.650	6476.35	8624.99	-422.22	-8614.67	5.42	
14837.00	89.970	266.210	6476.40	8719.90	-430.61	-8709.29	2.69	
14932.00	90.030	267.520	6476.40	8814.90	-435.81	-8804.15	1.38	
15026.00	90.000	269.780	6476.38	8908.87	-438.02	-8898.11	2.40	
15121.00	90.030	268.880	6476.35	9003.81	-439.13	-8993.11	0.95	
15215.00	90.000	268.810	6476.33	9097.77	-441.03	-9087.09	0.08	
15310.00	90.060	268.960	6476.28	9192.74	-442.88	-9182.07	0.17	
15404.00	90.030	271.680	6476.20	9286.60	-442.35	-9276.06	2.89	
15499.00	89.970	272.070	6476.20	9381.30	-439.24	-9371.01	0.42	
15593.00	90.090	270.340	6476.15	9475.07	-437.27	-9464.98	1.84	
15687.00	90.150	269.600	6475.96	9568.97	-437.32	-9558.98	0.79	
15782.00	90.030	268.820	6475.81	9663.92	-438.63	-9653.97	0.83	
15876.00	90.220	267.730	6475.60	9757.90	-441.46	-9747.93	1.18	LAST BHGE MWD SURVEY (2525' FNL & 601' FWL, SEC. 7)
15940.00	90.220	267.730	6475.36	9821.90	-443.99	-9811.88	0.00	PROJECTION TO BIT (2528' FNL & 537' FWL, SEC. 7)

HOLE & CASING SECTIONS - Ref Wellbore: WELLS RANCH AF07-651 AWB      Ref Wellpath: WELLS RANCH AF07-651 AWP									
String/Diameter	Start MD [ft]	End MD [ft]	Interval [ft]	Start TVD [ft]	End TVD [ft]	Start N/S [ft]	Start E/W [ft]	End N/S [ft]	End E/W [ft]
9.625in Casing Surface	30.00	1938.00	1908.00	30.00	1937.97	-0.01	0.02	2.55	-1.68
8.5in Open Hole	30.00	15940.00	15910.00	30.00	6475.36	-0.01	0.02	-443.99	-9811.88





# Actual Wellpath Report

WELLS RANCH AF07-651 AWP

Page n of nn



REFERENCE WELLPATH IDENTIFICATION			
Operator	NOBLE ENERGY, INC	Slot	SLOT#08 WELLS RANCH AF07-651 (2350'FNL & 175'FEL, SEC.08)
Area	COLORADO	Well	WELLS RANCH AF07-651
Field	WELD COUNTY (NOBLE NAD 83 GRID)	Wellbore	WELLS RANCH AF07-651 AWB
Facility	SEC.08-T05N-R62W		

TARGETS								
Name	TVD [ft]	North [ft]	East [ft]	Grid East [US ft]	Grid North [US ft]	Latitude	Longitude	Shape
SEC.07-T05N-R62W	-10.00	-1795.69	40.24	3323487.83	1394373.35	40°24'36.504"N	104°20'17.880"W	polygon
SEC.08-T05N-R62W	-10.00	-1795.69	40.24	3323487.83	1394373.35	40°24'36.504"N	104°20'17.880"W	polygon
WELLS RANCH AF07-651 LANDING POINT	6461.27	-217.10	-716.40	3322731.23	1395951.87	40°24'52.200"N	104°20'27.394"W	point
WELLS RANCH AF07-651 BHL (2545'FNL & 535'FWL, SEC.07)	6477.15	-461.81	-9813.42	3313634.58	1395707.18	40°24'50.940"N	104°22'25.032"W	point
SEC.07-T05N-R62W 460' SETBACKS	6527.00	-1795.69	40.24	3323487.83	1394373.35	40°24'36.504"N	104°20'17.880"W	polygon
SEC.08-T05N-R62W 460' SETBACKS	6527.00	-1795.69	40.24	3323487.83	1394373.35	40°24'36.504"N	104°20'17.880"W	polygon

WELLPATH COMPOSITION - Ref Wellbore: WELLS RANCH AF07-651 AWB					Ref Wellpath: WELLS RANCH AF07-651 AWP	
Start MD [ft]	End MD [ft]	Positional Uncertainty Model		Log Name/Comment		Wellbore
0.00	1932.00	BHI Generic gyro - northseeking (Standard)		Gryodata Surface Surveys <82'-1932'>		WELLS RANCH AF07-651 AWB
1932.00	15876.00	OWSG MWD rev2 + IFR2 + Sag + Multi-Station Correction		BHI/ATC OWSG MWD rev2+IFR1+MSA 8.5" Hole<1981'-15876'>		WELLS RANCH AF07-651 AWB
15876.00	15940.00	Blind Drilling (std)		Projection to bit		WELLS RANCH AF07-651 AWB

**Actual Wellpath Report**

WELLS RANCH AF07-651 AWP

Page n of nn



REFERENCE WELLPATH IDENTIFICATION			
Operator	NOBLE ENERGY, INC	Slot	SLOT#08 WELLS RANCH AF07-651 (2350'FNL & 175'FEL, SEC.08)
Area	COLORADO	Well	WELLS RANCH AF07-651
Field	WELD COUNTY (NOBLE NAD 83 GRID)	Wellbore	WELLS RANCH AF07-651 AWB
Facility	SEC.08-T05N-R62W		

WELLPATH COMMENTS				
MD [ft]	Inclination [°]	Azimuth [°]	TVD [ft]	Comment
1932.00	0.780	252.610	1931.97	TIED TO GYRO SURVEYS
15876.00	90.220	267.730	6475.60	LAST BHGE MWD SURVEY (2525' FNL & 601' FWL, SEC. 7)
15940.00	90.220	267.730	6475.36	PROJECTION TO BIT (2528' FNL & 537' FWL, SEC. 7)

COMMENTS	
Wellpath general comments SURFACE LOCATION: SENE 40.41507N 104.33836W API #: 05-123-44248	