

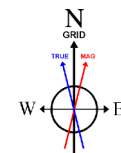
# NOBLE ENERGY, INC

Location: COLORADO Slot: SLOT#07 WELLS RANCH AF07-645 (2388'FNL & 175'FEL, SEC.08)  
Field: WELD COUNTY (NOBLE NAD 83 GRID) Well: WELLS RANCH AF07-645  
Facility: SEC.08-T05N-R62W Wellbore: WELLS RANCH AF07-645 PWB

Plot reference wellbore is WELLS RANCH AF07-645 PWB (REV 0.0)	Grid System: NAD83 (Lambert Colorado SP Northern Zone (2011, US feet)
True vertical depths are referenced to RIG (2010) (PWB)	North Reference: Grid north
Measured depths are referenced to RIG (2010) (PWB)	Scale: True distance
RIG (2010) (PWB) is Mean Sea Level 4724 feet	Depths are in feet
Mean Sea Level is Mean Sea Level (NAD 83) (2011) (PWB) (2011) (PWB)	Created by: Lumped on 2017-08-02
Coordinates are in feet referenced to Sea	Drawn by: Danner

## Comments

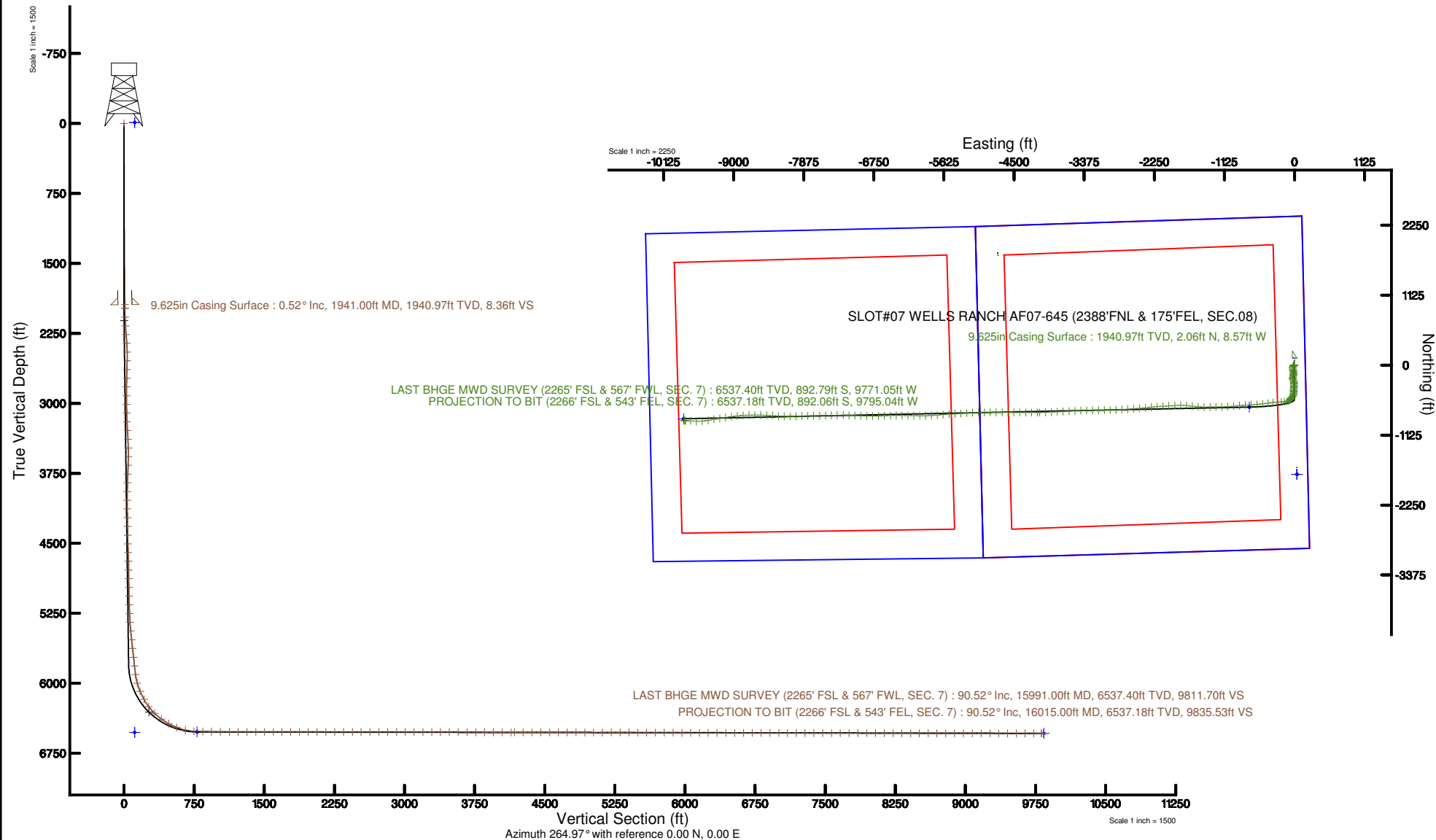
SURFACE LOCATION: SENE  
40.41496N  
104.33836W  
API #: 05-123-44250



**BAKER  
HUGHES**  
a GE company



BGGM (1900.0 to 2018.0) Dip: 66.96° Field: 52513.1 nT  
Magnetic North is 8.15 degrees East of True North (at 6/6/2017)  
Grid North is 0.75 degrees East of True North  
To correct azimuth from True to Grid subtract 0.75 degrees  
To correct azimuth from Magnetic to Grid add 7.40 degrees





# Actual Wellpath Report

WELLS RANCH AF07-645 AWP

Page n of nn



REFERENCE WELLPATH IDENTIFICATION			
Operator	NOBLE ENERGY, INC	Slot	SLOT#07 WELLS RANCH AF07-645 (2388'FNL & 175'FEL, SEC.08)
Area	COLORADO	Well	WELLS RANCH AF07-645
Field	WELD COUNTY (NOBLE NAD 83 GRID)	Wellbore	WELLS RANCH AF07-645 AWP
Facility	SEC.08-T05N-R62W		

REPORT SETUP INFORMATION			
Projection System	NAD83 / Lambert Colorado SP, Northern Zone (501), US feet	Software System	WellArchitect® 5.1
North Reference	Grid	User	Cantryat
Scale	0.999961	Report Generated	8/2/2017 at 9:57:43 AM
Convergence at slot	0.75° East	Database/Source file	Denver/WELLS_RANCH_AF07-645_AWP.xml

WELLPATH LOCATION						
	Local coordinates		Grid coordinates		Geographic coordinates	
	North[ft]	East[ft]	Easting[US ft]	Northing[US ft]	Latitude	Longitude
Slot Location	-1767.11	4759.81	3323448.13	1396128.90	40°24'53.856"N	104°20'18.096"W
Facility Reference Pt			3318688.50	1397895.93	40°25'11.928"N	104°21'19.332"W
Field Reference Pt			3000000.00	4454105.15	48°46'34.315"N	105°30'00.000"W

WELLPATH DATUM			
Calculation method	Minimum curvature	RIG (30'KB) (RKB) to Facility Vertical Datum	4734.00ft
Horizontal Reference Pt	Slot	RIG (30'KB) (RKB) to Mean Sea Level	4734.00ft
Vertical Reference Pt	RIG (30'KB) (RKB)	RIG (30'KB) (RKB) to Mud Line at Slot (SLOT#07 WELLS RANCH AF07-645 (2388'FNL & 175'FEL, SEC.08))	4734.00ft
MD Reference Pt	RIG (30'KB) (RKB)	Section Origin	N 0.00, E 0.00 ft
Field Vertical Reference	Mean Sea Level	Section Azimuth	264.97°



# Actual Wellpath Report

WELLS RANCH AF07-645 AWP

Page n of nn



REFERENCE WELLPATH IDENTIFICATION			
Operator	NOBLE ENERGY, INC	Slot	SLOT#07 WELLS RANCH AF07-645 (2388'FNL & 175'FEL, SEC.08)
Area	COLORADO	Well	WELLS RANCH AF07-645
Field	WELD COUNTY (NOBLE NAD 83 GRID)	Wellbore	WELLS RANCH AF07-645 AWB
Facility	SEC.08-T05N-R62W		

## WELLPATH DATA (153 stations)

MD [ft]	Inclination [°]	Azimuth [°]	TVD [ft]	Vert Sect [ft]	North [ft]	East [ft]	DLS [°/100ft]	Comments
0.00	0.000	283.500	0.00	0.00	0.00	0.00	0.00	
1980.00	0.531	283.500	1979.97	8.70	2.14	-8.92	0.03	
1981.00	0.530	283.480	1980.97	8.71	2.14	-8.93	0.10	
2076.00	4.290	205.010	2075.88	10.90	-0.98	-10.86	4.44	
2170.00	6.870	203.450	2169.43	15.35	-9.32	-14.59	2.75	
2265.00	8.920	209.760	2263.52	22.26	-20.93	-20.50	2.34	
2359.00	8.950	198.360	2356.39	29.32	-34.20	-26.42	1.88	
2454.00	8.880	182.410	2450.26	33.20	-48.54	-29.06	2.59	
2549.00	8.910	168.180	2544.12	33.28	-63.07	-27.86	2.31	
2643.00	8.900	164.910	2636.99	31.15	-77.21	-24.48	0.54	
2738.00	8.970	167.640	2730.84	28.92	-91.54	-20.98	0.45	
2832.00	8.990	169.600	2823.69	27.30	-105.92	-18.08	0.33	
2927.00	8.920	173.540	2917.53	26.42	-120.54	-15.92	0.65	
3022.00	8.900	180.310	3011.39	26.92	-135.21	-15.13	1.10	
3116.00	8.740	184.830	3104.28	28.82	-149.60	-15.77	0.76	
3211.00	8.650	188.450	3198.19	31.72	-163.86	-17.43	0.58	
3305.00	8.920	198.530	3291.09	36.28	-177.76	-20.78	1.66	
3400.00	8.920	193.000	3384.94	41.50	-191.92	-24.78	0.90	
3494.00	9.170	184.380	3477.78	44.98	-206.49	-26.99	1.46	
3589.00	8.890	171.590	3571.61	45.79	-221.30	-26.49	2.13	
3683.00	8.880	160.210	3664.49	43.51	-235.31	-22.97	1.87	
3778.00	8.950	160.810	3758.34	39.83	-249.19	-18.06	0.12	
3873.00	8.950	165.510	3852.18	36.81	-263.32	-13.78	0.77	
3967.00	8.810	169.840	3945.06	34.96	-277.49	-10.69	0.73	
4062.00	8.820	173.690	4038.94	34.15	-291.89	-8.60	0.62	
4156.00	8.740	181.210	4131.84	34.76	-306.19	-7.96	1.22	
4251.00	8.660	181.120	4225.75	36.32	-320.56	-8.25	0.09	
4345.00	8.680	179.720	4318.67	37.66	-334.73	-8.36	0.23	
4440.00	8.630	178.900	4412.59	38.74	-349.02	-8.18	0.14	
4534.00	8.560	190.470	4505.54	41.09	-362.95	-9.32	1.84	



# Actual Wellpath Report

WELLS RANCH AF07-645 AWP

Page n of nn



REFERENCE WELLPATH IDENTIFICATION			
Operator	NOBLE ENERGY, INC	Slot	SLOT#07 WELLS RANCH AF07-645 (2388'FNL & 175'FEL, SEC.08)
Area	COLORADO	Well	WELLS RANCH AF07-645
Field	WELD COUNTY (NOBLE NAD 83 GRID)	Wellbore	WELLS RANCH AF07-645 AWB
Facility	SEC.08-T05N-R62W		

## WELLPATH DATA (153 stations)

MD [ft]	Inclination [°]	Azimuth [°]	TVD [ft]	Vert Sect [ft]	North [ft]	East [ft]	DLS [°/100ft]	Comments
4628.00	8.750	190.350	4598.47	44.86	-376.87	-11.88	0.20	
4723.00	8.690	182.710	4692.38	47.74	-391.14	-13.51	1.22	
4817.00	8.670	178.640	4785.30	49.15	-405.32	-13.68	0.65	
4912.00	8.560	177.940	4879.23	49.98	-419.54	-13.26	0.16	
5007.00	8.600	179.540	4973.17	50.91	-433.71	-12.95	0.25	
5101.00	8.140	185.210	5066.17	52.65	-447.37	-13.49	1.00	
5196.00	8.160	189.600	5160.21	55.55	-460.71	-15.23	0.66	
5290.00	7.690	193.130	5253.31	59.19	-473.42	-17.77	0.72	
5385.00	8.090	202.180	5347.41	64.23	-485.80	-21.74	1.37	
5479.00	9.350	209.400	5440.33	71.57	-498.58	-27.98	1.77	
5574.00	9.000	215.010	5534.11	80.72	-511.38	-36.04	1.01	
5668.00	9.370	220.690	5626.91	90.92	-523.21	-45.24	1.04	
5763.00	9.410	217.720	5720.64	101.73	-535.22	-55.04	0.51	
5857.00	8.980	215.210	5813.43	111.69	-547.29	-63.97	0.63	
5952.00	10.640	220.230	5907.04	122.71	-560.04	-73.91	1.96	
6046.00	17.410	238.070	5998.23	141.44	-574.13	-91.48	8.47	
6141.00	22.740	255.940	6087.51	172.30	-586.13	-121.40	8.50	
6235.00	28.500	267.790	6172.28	212.70	-591.41	-161.49	8.17	
6330.00	37.020	269.650	6252.10	263.94	-592.46	-212.83	9.03	
6424.00	46.080	266.720	6322.38	326.12	-594.58	-275.07	9.86	
6519.00	53.860	262.820	6383.45	398.78	-601.34	-347.41	8.77	
6613.00	61.570	261.280	6433.62	478.08	-612.37	-426.05	8.32	
6708.00	68.370	263.000	6473.80	564.00	-624.10	-511.27	7.34	
6803.00	76.670	266.290	6502.32	654.51	-632.49	-601.40	9.34	
6897.00	88.280	268.170	6514.61	747.47	-636.96	-694.32	12.51	
6992.00	89.080	265.370	6516.79	842.39	-642.31	-789.13	3.06	
7086.00	88.920	263.270	6518.43	936.36	-651.61	-882.65	2.24	
7181.00	89.010	264.080	6520.15	1031.32	-662.08	-977.05	0.86	
7276.00	89.690	266.710	6521.23	1126.30	-669.70	-1071.73	2.86	
7370.00	89.820	269.450	6521.63	1220.15	-672.85	-1165.67	2.92	



# Actual Wellpath Report

WELLS RANCH AF07-645 AWP

Page n of nn



REFERENCE WELLPATH IDENTIFICATION			
Operator	NOBLE ENERGY, INC	Slot	SLOT#07 WELLS RANCH AF07-645 (2388'FNL & 175'FEL, SEC.08)
Area	COLORADO	Well	WELLS RANCH AF07-645
Field	WELD COUNTY (NOBLE NAD 83 GRID)	Wellbore	WELLS RANCH AF07-645 AWB
Facility	SEC.08-T05N-R62W		

## WELLPATH DATA (153 stations)

MD [ft]	Inclination [°]	Azimuth [°]	TVD [ft]	Vert Sect [ft]	North [ft]	East [ft]	DLS [°/100ft]	Comments
7465.00	89.820	270.740	6521.93	1314.77	-672.70	-1260.67	1.36	
7559.00	89.910	267.960	6522.15	1408.49	-673.76	-1354.65	2.96	
7654.00	89.970	271.030	6522.25	1503.18	-674.60	-1449.64	3.23	
7748.00	89.910	275.660	6522.35	1596.15	-669.12	-1543.45	4.93	
7843.00	90.430	275.940	6522.07	1689.46	-659.52	-1637.96	0.62	
7937.00	90.400	274.990	6521.39	1781.89	-650.56	-1731.53	1.01	
8032.00	89.780	271.410	6521.24	1875.89	-645.26	-1826.37	3.82	
8126.00	90.000	265.190	6521.42	1969.69	-648.05	-1920.28	6.62	
8221.00	89.820	265.850	6521.57	2064.68	-655.47	-2014.99	0.72	
8315.00	89.970	265.830	6521.74	2158.67	-662.29	-2108.74	0.16	
8410.00	89.940	265.350	6521.81	2253.67	-669.59	-2203.46	0.51	
8504.00	89.880	264.720	6521.96	2347.67	-677.73	-2297.11	0.67	
8599.00	89.850	264.290	6522.19	2442.66	-686.83	-2391.67	0.45	
8693.00	89.780	265.820	6522.49	2536.66	-694.93	-2485.32	1.63	
8787.00	90.000	266.170	6522.67	2630.64	-701.49	-2579.09	0.44	
8882.00	89.820	265.720	6522.82	2725.63	-708.21	-2673.85	0.51	
8976.00	89.880	266.170	6523.06	2819.61	-714.86	-2767.61	0.48	
9071.00	89.910	268.230	6523.24	2914.54	-719.50	-2862.49	2.17	
9165.00	89.720	268.610	6523.54	3008.37	-722.09	-2956.46	0.45	
9260.00	89.940	268.960	6523.82	3103.16	-724.10	-3051.44	0.44	
9354.00	89.880	268.900	6523.97	3196.93	-725.86	-3145.42	0.09	
9449.00	89.820	269.550	6524.22	3291.67	-727.14	-3240.41	0.69	
9543.00	89.820	269.250	6524.52	3385.39	-728.13	-3334.40	0.32	
9637.00	89.820	267.700	6524.81	3479.21	-730.63	-3428.37	1.65	
9732.00	89.780	266.960	6525.14	3574.13	-735.06	-3523.26	0.78	
9826.00	89.880	266.700	6525.42	3668.08	-740.25	-3617.12	0.30	
9921.00	89.880	266.380	6525.62	3763.04	-745.99	-3711.95	0.34	
10015.00	89.780	266.630	6525.90	3857.01	-751.72	-3805.77	0.29	
10110.00	89.910	267.350	6526.16	3951.95	-756.71	-3900.64	0.77	
10204.00	89.910	268.410	6526.30	4045.83	-760.18	-3994.57	1.13	



# Actual Wellpath Report

WELLS RANCH AF07-645 AWP

Page n of nn



REFERENCE WELLPATH IDENTIFICATION			
Operator	NOBLE ENERGY, INC	Slot	SLOT#07 WELLS RANCH AF07-645 (2388'FNL & 175'FEL, SEC.08)
Area	COLORADO	Well	WELLS RANCH AF07-645
Field	WELD COUNTY (NOBLE NAD 83 GRID)	Wellbore	WELLS RANCH AF07-645 AWB
Facility	SEC.08-T05N-R62W		

## WELLPATH DATA (153 stations)

MD [ft]	Inclination [°]	Azimuth [°]	TVD [ft]	Vert Sect [ft]	North [ft]	East [ft]	DLS [°/100ft]	Comments
10299.00	89.880	269.790	6526.48	4140.58	-761.68	-4089.56	1.45	
10334.00	89.940	270.280	6526.53	4175.44	-761.65	-4124.56	1.41	
10428.00	89.910	269.800	6526.66	4269.07	-761.59	-4218.56	0.51	
10523.00	89.850	269.900	6526.86	4363.73	-761.84	-4313.56	0.12	
10617.00	89.970	270.510	6527.00	4457.33	-761.50	-4407.56	0.66	
10712.00	89.690	270.330	6527.28	4551.91	-760.80	-4502.55	0.35	
10806.00	89.940	270.120	6527.59	4645.51	-760.44	-4596.55	0.35	
10901.00	89.970	269.940	6527.66	4740.14	-760.39	-4691.55	0.19	
10996.00	89.780	270.470	6527.87	4834.74	-760.05	-4786.55	0.59	
11090.00	89.820	269.660	6528.20	4928.37	-759.94	-4880.55	0.86	
11185.00	89.880	267.700	6528.45	5023.17	-762.13	-4975.52	2.06	
11279.00	90.430	271.050	6528.19	5116.88	-763.15	-5069.50	3.61	
11374.00	89.940	267.440	6527.89	5211.60	-764.40	-5164.47	3.83	
11468.00	89.970	265.880	6527.96	5305.55	-769.88	-5258.31	1.66	
11563.00	90.000	265.790	6527.98	5400.54	-776.78	-5353.06	0.10	
11658.00	89.080	266.340	6528.75	5495.52	-783.30	-5447.83	1.13	
11752.00	89.780	266.650	6529.68	5589.48	-789.05	-5541.65	0.81	
11847.00	89.880	265.150	6529.96	5684.46	-795.84	-5636.40	1.58	
11941.00	89.910	265.740	6530.14	5778.46	-803.30	-5730.11	0.63	
12035.00	89.910	266.800	6530.28	5872.44	-809.42	-5823.91	1.13	
12130.00	89.750	268.460	6530.57	5967.33	-813.35	-5918.82	1.76	
12224.00	89.720	270.920	6531.00	6061.00	-813.86	-6012.81	2.62	
12319.00	89.940	271.600	6531.28	6155.43	-811.77	-6107.79	0.75	
12413.00	89.910	270.620	6531.41	6248.89	-809.95	-6201.77	1.04	
12508.00	89.880	269.910	6531.58	6343.48	-809.51	-6296.77	0.75	
12602.00	89.910	270.550	6531.75	6437.09	-809.13	-6390.77	0.68	
12697.00	90.060	268.400	6531.78	6531.79	-810.00	-6485.76	2.27	
12792.00	89.750	267.180	6531.93	6626.67	-813.66	-6580.68	1.33	
12886.00	89.850	267.800	6532.26	6720.58	-817.78	-6674.59	0.67	
12981.00	89.880	270.320	6532.49	6815.33	-819.34	-6769.57	2.65	



# Actual Wellpath Report

WELLS RANCH AF07-645 AWP

Page n of nn



REFERENCE WELLPATH IDENTIFICATION			
Operator	NOBLE ENERGY, INC	Slot	SLOT#07 WELLS RANCH AF07-645 (2388'FNL & 175'FEL, SEC.08)
Area	COLORADO	Well	WELLS RANCH AF07-645
Field	WELD COUNTY (NOBLE NAD 83 GRID)	Wellbore	WELLS RANCH AF07-645 AWB
Facility	SEC.08-T05N-R62W		

## WELLPATH DATA (153 stations)

MD [ft]	Inclination [°]	Azimuth [°]	TVD [ft]	Vert Sect [ft]	North [ft]	East [ft]	DLS [°/100ft]	Comments
13075.00	89.880	271.780	6532.68	6908.80	-817.61	-6863.55	1.55	
13170.00	89.910	272.260	6532.86	7003.08	-814.27	-6958.49	0.51	
13264.00	89.820	272.690	6533.08	7096.28	-810.21	-7052.41	0.47	
13359.00	89.940	272.020	6533.28	7190.49	-806.30	-7147.32	0.72	
13453.00	89.880	269.760	6533.43	7283.98	-804.84	-7241.31	2.41	
13548.00	89.940	268.850	6533.57	7378.71	-806.00	-7336.30	0.96	
13642.00	89.910	268.610	6533.70	7472.51	-808.08	-7430.28	0.26	
13737.00	89.850	268.460	6533.90	7567.32	-810.51	-7525.24	0.17	
13831.00	89.780	268.970	6534.20	7661.12	-812.62	-7619.22	0.55	
13926.00	89.850	269.270	6534.51	7755.87	-814.07	-7714.21	0.32	
14021.00	89.850	267.990	6534.76	7850.68	-816.35	-7809.18	1.35	
14115.00	89.780	267.010	6535.06	7944.58	-820.45	-7903.09	1.05	
14209.00	89.820	268.880	6535.39	8038.45	-823.82	-7997.02	1.99	
14304.00	89.820	269.770	6535.69	8133.18	-824.94	-8092.01	0.94	
14398.00	90.000	271.520	6535.83	8226.71	-823.88	-8186.00	1.87	
14493.00	90.120	274.890	6535.73	8320.72	-818.57	-8280.84	3.55	
14588.00	89.910	272.840	6535.71	8414.57	-812.16	-8375.62	2.17	
14682.00	89.850	271.810	6535.91	8507.80	-808.35	-8469.54	1.10	
14777.00	89.910	272.270	6536.10	8602.07	-804.97	-8564.48	0.49	
14871.00	89.820	270.920	6536.33	8695.44	-802.35	-8658.44	1.44	
14966.00	90.060	268.030	6536.43	8790.14	-803.22	-8753.43	3.05	
15060.00	89.850	265.220	6536.50	8884.09	-808.76	-8847.26	3.00	
15155.00	89.910	263.960	6536.70	8979.09	-817.71	-8941.83	1.33	
15249.00	89.880	262.300	6536.87	9073.04	-828.96	-9035.15	1.77	
15344.00	89.690	260.680	6537.23	9167.86	-843.01	-9129.10	1.72	
15439.00	89.780	261.430	6537.67	9262.63	-857.79	-9222.95	0.80	
15533.00	89.820	260.980	6538.00	9356.43	-872.16	-9315.84	0.48	
15627.00	89.630	259.170	6538.45	9450.08	-888.36	-9408.43	1.94	
15722.00	90.090	264.820	6538.68	9544.91	-901.58	-9502.46	5.97	
15816.00	90.220	273.500	6538.42	9638.57	-902.96	-9596.36	9.24	



# Actual Wellpath Report

WELLS RANCH AF07-645 AWP

Page n of nn



REFERENCE WELLPATH IDENTIFICATION			
Operator	NOBLE ENERGY, INC	Slot	SLOT#07 WELLS RANCH AF07-645 (2388'FNL & 175'FEL, SEC.08)
Area	COLORADO	Well	WELLS RANCH AF07-645
Field	WELD COUNTY (NOBLE NAD 83 GRID)	Wellbore	WELLS RANCH AF07-645 AWB
Facility	SEC.08-T05N-R62W		

## WELLPATH DATA (153 stations)

MD [ft]	Inclination [°]	Azimuth [°]	TVD [ft]	Vert Sect [ft]	North [ft]	East [ft]	DLS [°/100ft]	Comments
15910.00	90.310	273.970	6537.99	9731.48	-896.84	-9690.16	0.51	
15991.00	90.520	271.750	6537.40	9811.70	-892.79	-9771.05	2.75	LAST BHGE MWD SURVEY (2265' FSL & 567' FWL, SEC. 7)
16015.00	90.520	271.750	6537.18	9835.53	-892.06	-9795.04	0.00	PROJECTION TO BIT (2266' FSL & 543' FEL, SEC. 7)

## HOLE & CASING SECTIONS - Ref Wellbore: WELLS RANCH AF07-645 AWB Ref Wellpath: WELLS RANCH AF07-645 AWP

String/Diameter	Start MD [ft]	End MD [ft]	Interval [ft]	Start TVD [ft]	End TVD [ft]	Start N/S [ft]	Start E/W [ft]	End N/S [ft]	End E/W [ft]
9.625in Casing Surface	30.00	1941.00	1911.00	30.00	1940.97	0.00	0.00	2.06	-8.57
8.5in Open Hole	30.00	16015.00	15985.00	30.00	6537.18	0.00	0.00	-892.06	-9795.04





## Actual Wellpath Report

WELLS RANCH AF07-645 AWP

Page n of nn



REFERENCE WELLPATH IDENTIFICATION			
Operator	NOBLE ENERGY, INC	Slot	SLOT#07 WELLS RANCH AF07-645 (2388'FNL & 175'FEL, SEC.08)
Area	COLORADO	Well	WELLS RANCH AF07-645
Field	WELD COUNTY (NOBLE NAD 83 GRID)	Wellbore	WELLS RANCH AF07-645 AWB
Facility	SEC.08-T05N-R62W		

TARGETS								
Name	TVD [ft]	North [ft]	East [ft]	Grid East [US ft]	Grid North [US ft]	Latitude	Longitude	Shape
SEC.07-T05N-R62W	-10.00	-1755.62	39.71	3323487.83	1394373.35	40°24'36.504"N	104°20'17.880"W	polygon
SEC.08-T05N-R62W	-10.00	-1755.62	39.71	3323487.83	1394373.35	40°24'36.504"N	104°20'17.880"W	polygon
WELLS RANCH AF07-645 LANDING POINT REV-2	6521.00	-675.00	-725.00	3322723.15	1395453.92	40°24'47.280"N	104°20'27.582"W	point
SEC.07-T05N-R62W 460' SETBACKS	6527.00	-1755.62	39.71	3323487.83	1394373.35	40°24'36.504"N	104°20'17.880"W	polygon
SEC.08-T05N-R62W 460' SETBACKS	6527.00	-1755.62	39.71	3323487.83	1394373.35	40°24'36.504"N	104°20'17.880"W	polygon
WELLS RANCH AF07-645 BHL REV-2 (2295'FSL & 535'FWL, SEC.07)	6536.85	-862.45	-9802.78	3313645.75	1395266.48	40°24'46.584"N	104°22'24.960"W	point

WELLPATH COMPOSITION - Ref Wellbore: WELLS RANCH AF07-645 AWB      Ref Wellpath: WELLS RANCH AF07-645 AWP				
Start MD [ft]	End MD [ft]	Positional Uncertainty Model	Log Name/Comment	Wellbore
0.00	1980.00	BHI Drift Indicator - Estimated Azimuth (Standard)	Assumed Vertical <30-1980>	WELLS RANCH AF07-645 AWB
1980.00	15991.00	OWSG MWD rev2 + IFR1 + Multi-Station Correction	BHI/ATC OWSG MWD+IFR+MSA 8.75 Hole <1981'15991'>	WELLS RANCH AF07-645 AWB
15991.00	16015.00	Blind Drilling (std)	Projection to bit	WELLS RANCH AF07-645 AWB

**Actual Wellpath Report**

WELLS RANCH AF07-645 AWP

Page n of nn



REFERENCE WELLPATH IDENTIFICATION			
Operator	NOBLE ENERGY, INC	Slot	SLOT#07 WELLS RANCH AF07-645 (2388'FNL & 175'FEL, SEC.08)
Area	COLORADO	Well	WELLS RANCH AF07-645
Field	WELD COUNTY (NOBLE NAD 83 GRID)	Wellbore	WELLS RANCH AF07-645 AWB
Facility	SEC.08-T05N-R62W		

WELLPATH COMMENTS				
MD [ft]	Inclination [°]	Azimuth [°]	TVD [ft]	Comment
15991.00	90.520	271.750	6537.40	LAST BHGE MWD SURVEY (2265' FSL & 567' FWL, SEC. 7)
16015.00	90.520	271.750	6537.18	PROJECTION TO BIT (2266' FSL & 543' FEL, SEC. 7)

COMMENTS	
<b>Wellpath general comments</b> SURFACE LOCATION: SENE 40.41496N 104.33836W API #: 05-123-44250	