

BAKER HUGHES				Resistivity Gamma Ray				LWD MEMORY LOG					
Scale: 1:240 TVD				Company: Noble Energy									
Depth Reference:				Well: Wells Ranch AF07-645									
Driller's Depth				Field: Weld County(Noble NAD 83 Grid)									
				County: Weld				Country: United States					
				State: Colorado									
Status: Final Print		Surface Location: Latitude: 040° 24' 53.856" N Longitude: 104° 20' 18.096" W		Other Services: Directional									
API No: 05-123-44250-00		SEC: 8		TWN: 5N		RGE: 62W							
Job ID: 86454 11		Permanent Datum (P.D.): Ground Level		Elevation: 4704.00 ft		Elev. KB: 4734.00 ft							
Log Measured From: Rig Floor		Above P.D.		30.00 ft		Elev. DF: 4704.00 ft							
Dates				Interval Logged				Magnetic Field Reference					
Date From: 2017-07-07		Top: (ft) 1952.00		Azi Reference North: Grid		Dip Angle: (deg) 67.14							
Date To: 2017-07-10		Bottom: (ft) 5870.00		Total Magnetic Field Strength: (mT) 52291									
Spud Date: 2017-07-06				Mag to Reference North Correction: (deg) 7.13 E									
Borehole Record				Casing Record									
Hole Size (in)		From (ft)		To (ft)		Size (in)		Weight (lb/ft)		From (ft)		To (ft)	
13.500		30.00		1952.00		9.625		36.00		30.00		1940.00	
8.500		1952.00		16015.00									
Mud Record				Deviation Record									
Type		From (ft)		To (ft)		Hole Size (in)		Interval (ft)		Inc   Az (Start)		Inc   Az (End)	
Oil Based Mud		1952.00		16015.00		8.500		14063.00		0.53   283.48		90.52   271.75	
Acquisition System				Software Version				Other					
Baker Hughes Cadence		RT4.1		H&P 517		Rig: Contractor: District:		Helmerich & Payne Drilling Co		Unit: D&E			
Plot Studio		4.1.7763.3											

1	ATC_SU	12536524	Near Bit Inclination	5.93	6.73		
1	ATC_MWD	13067101	Gamma (single)	2.75	12.90	7.000	3.250
1	ATC_MWD	13067101	Directional (mag)	12.27	22.42	7.000	3.250
1	OnTrak	12858682	Pressure	2.73	10140.41	6.750	0.000
1	OnTrak	12858682	Gamma (double)	3.62	10141.30	6.750	0.000
1	OnTrak	12858682	Resistivity (4tx)	7.66	10145.34	6.750	0.000
1	OnTrak	12858682	Directional (mag)	13.45	10151.13	6.750	0.000

Service and Tool Mnemonics

Mnemonic	Name	Description
ATC_SU	ATC_SU	Auto Trak Curve Steering Unit
ATC_MWD	ATC_MWD	Auto Trak Curve MWD
ATC_LCPM	ATC_LCPM	Auto Trak Curve LCPM
OTK	OnTrak	Sensor Sub (Inc, Azi, Temp, Azimuthal GR, Res, AP, VSS), OnTrak Platform
BCPM	BCPM	Bi-Directional Communication and Power Module, OnTrak Platform

Comments

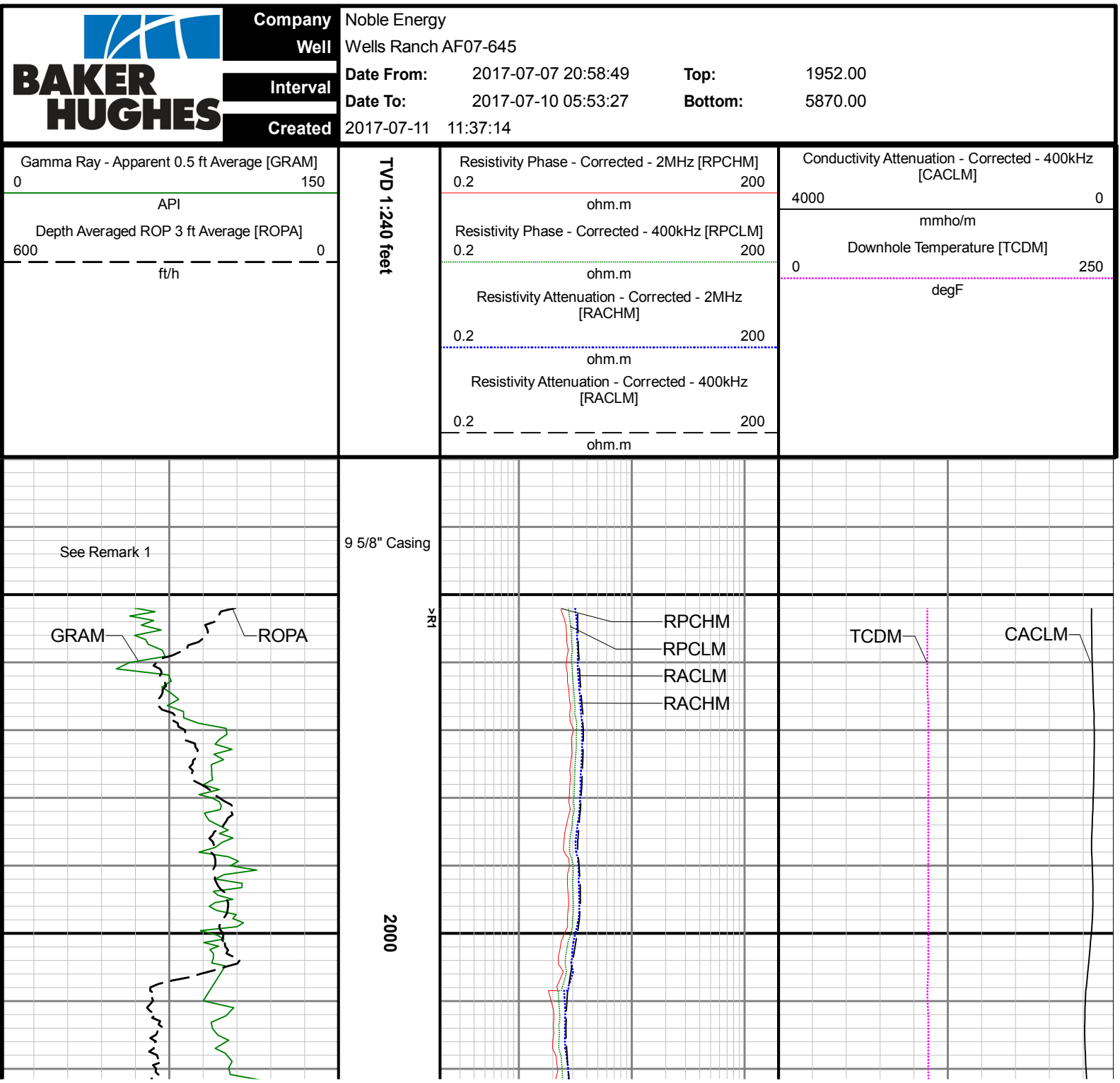
- 1
- Depth measurements were obtained from a depth control system not supplied or operated by Baker Hughes. Due to the lack of control by Baker Hughes, depth calibrations and measurements could not be independently verified.
- 2
- Baker Hughes LWD run 1 utilized a 6.75 inch NaviGamma and OnTrak (Gamma Ray, Directional and Resistivity) services behind a 8.5 inch bit and rotary steerable assembly from 1952 to 16015 feet MD (1952 to 6537 feet TVD).

Remarks

Number	Measured Depth (ft)	Hole Section (in)	Run No.	Remark
1	1952.00	8.500	1	Gamma Ray logging operations began at 1952 feet MD (1952 feet TVD) per customer request.

Curve Mnemonics

Presented Curves	Description	Units
CACLM	Conductivity Attenuation - Corrected - 400kHz	mmho/m
RACHM	Resistivity Attenuation - Corrected - 2MHz	ohm.m
RACLM	Resistivity Attenuation - Corrected - 400kHz	ohm.m
RPCHM	Resistivity Phase - Corrected - 2MHz	ohm.m
RPCLM	Resistivity Phase - Corrected - 400kHz	ohm.m
ROPA	Depth Averaged ROP 3 ft Average	ft/h
GRAM	OnTrak - Gamma Ray - Apparent - Memory 0.5 ft Average	API
TCDM	Downhole Temperature	degF

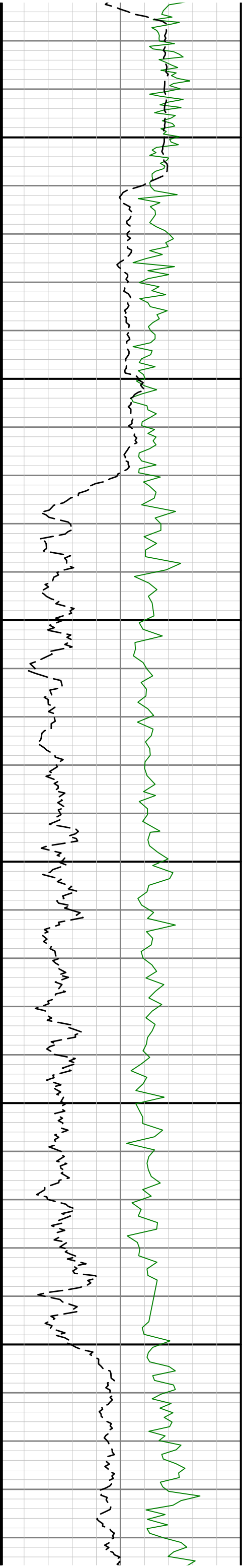


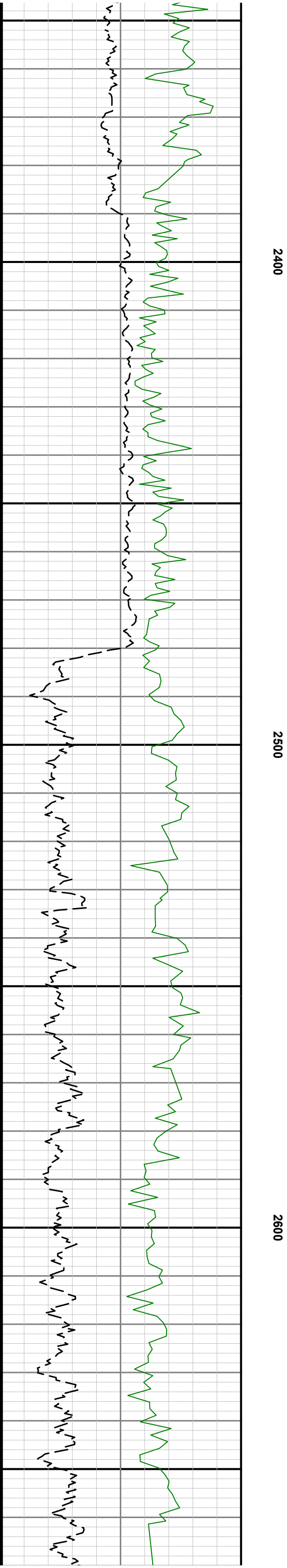


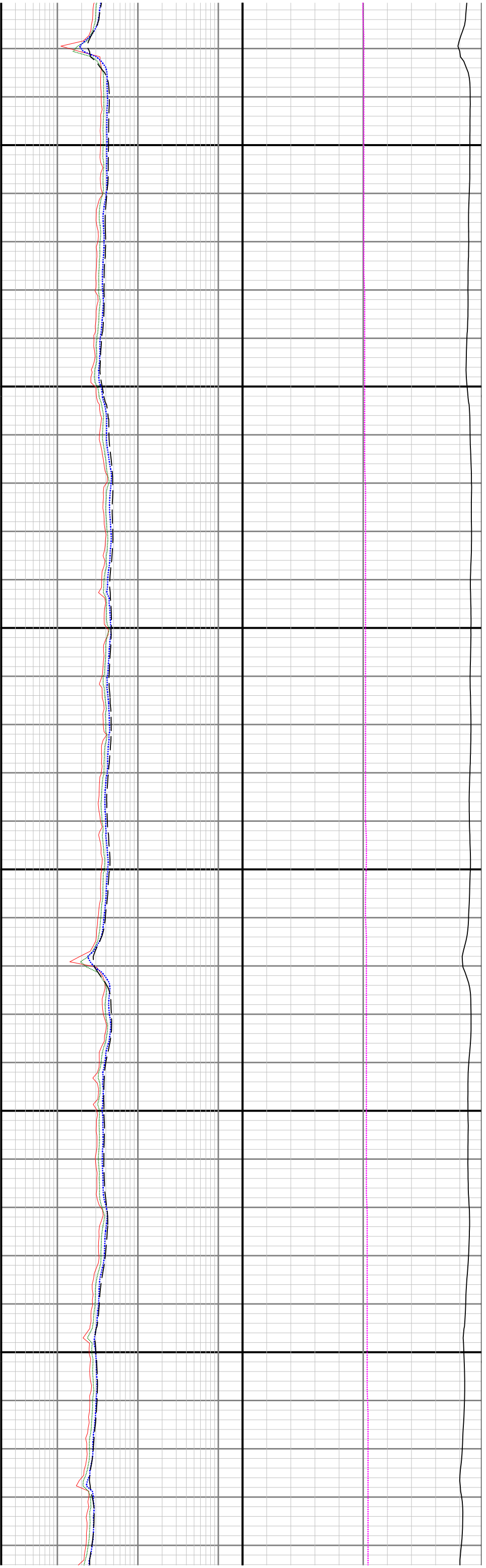
2100

2200

2300



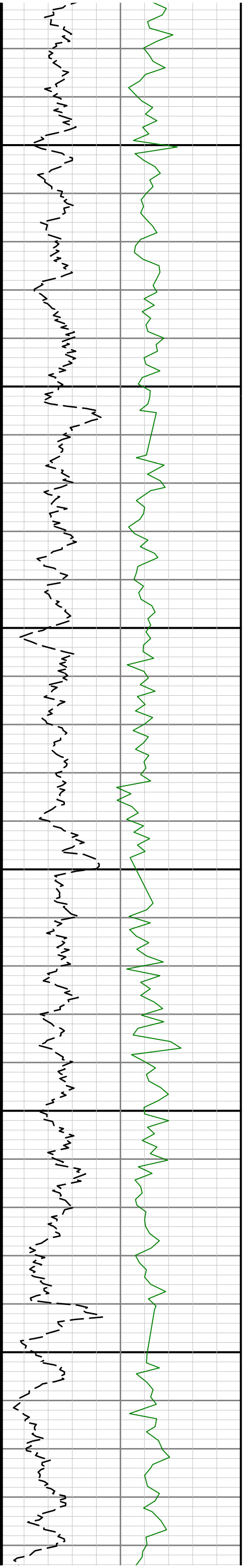


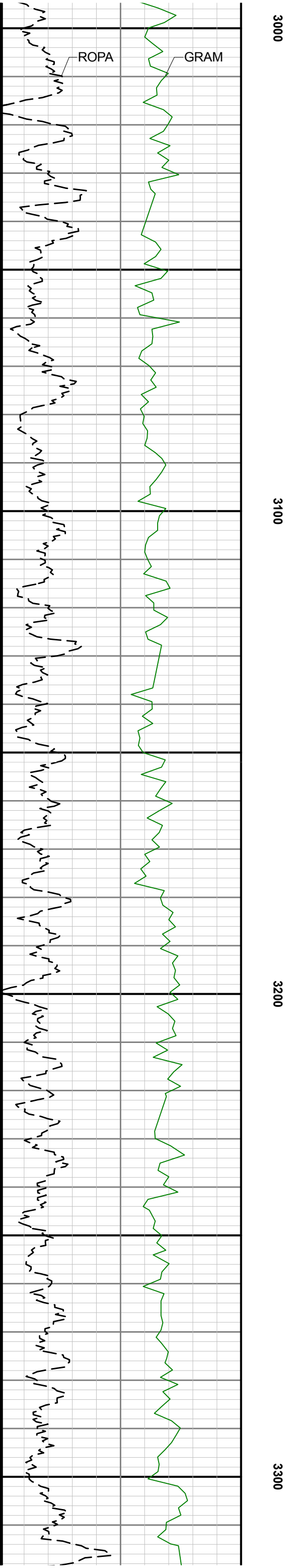


2700

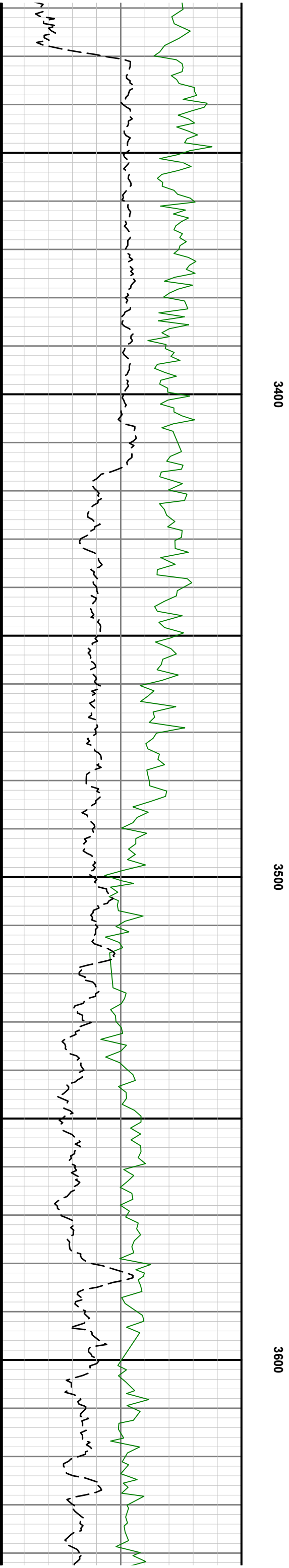
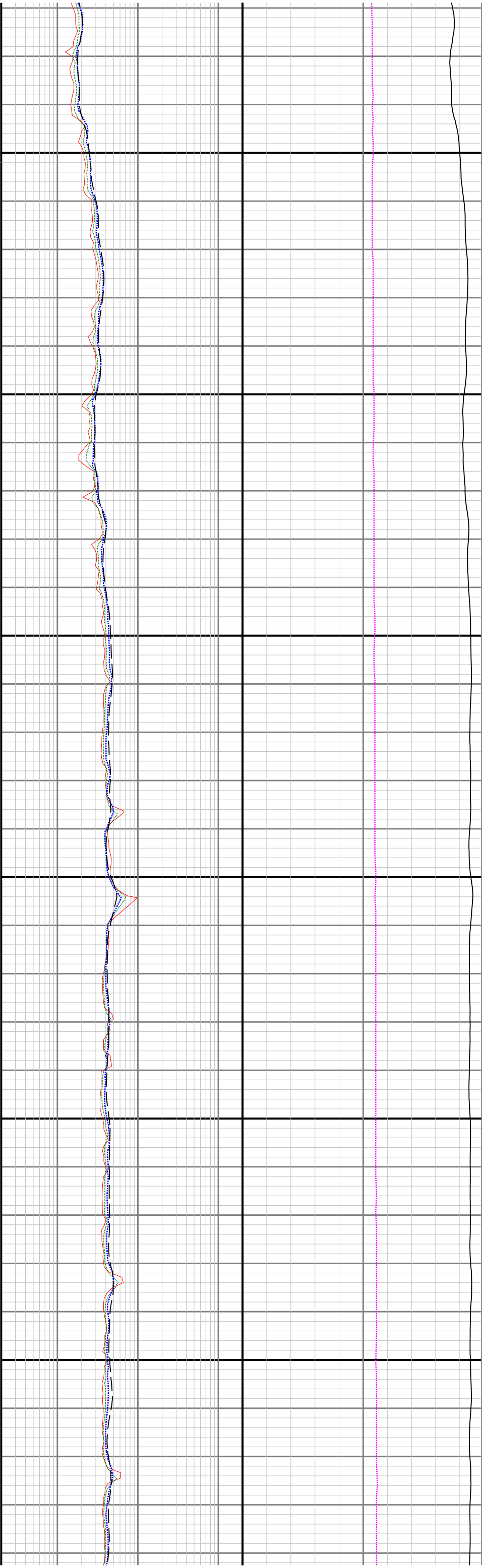
2800

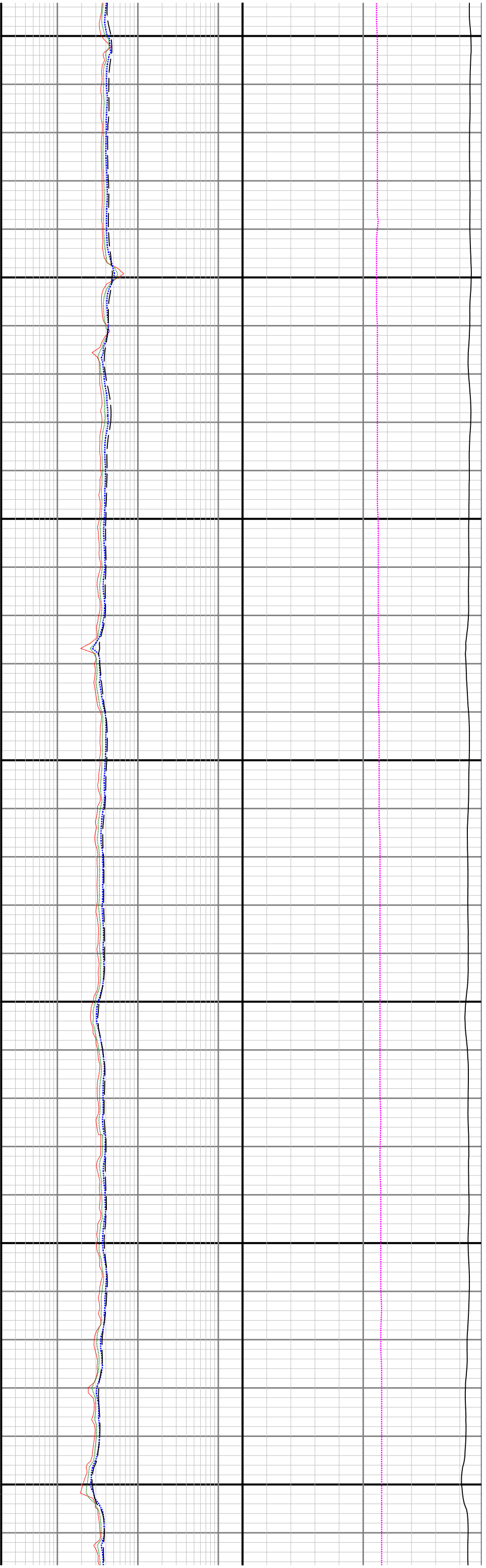
2900







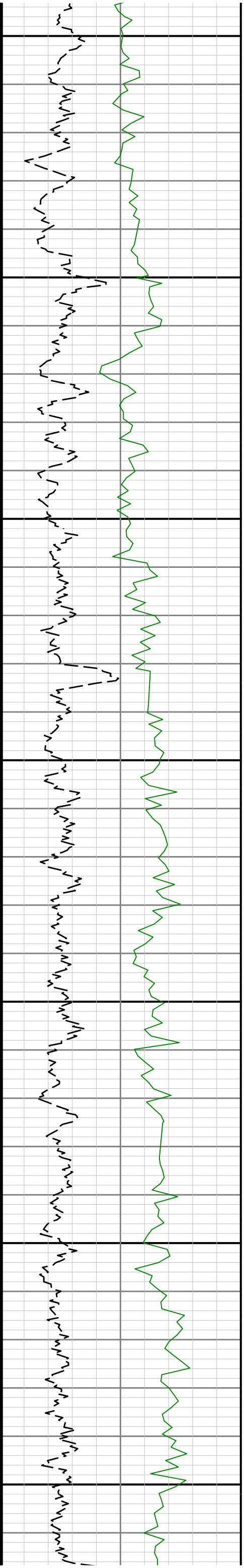




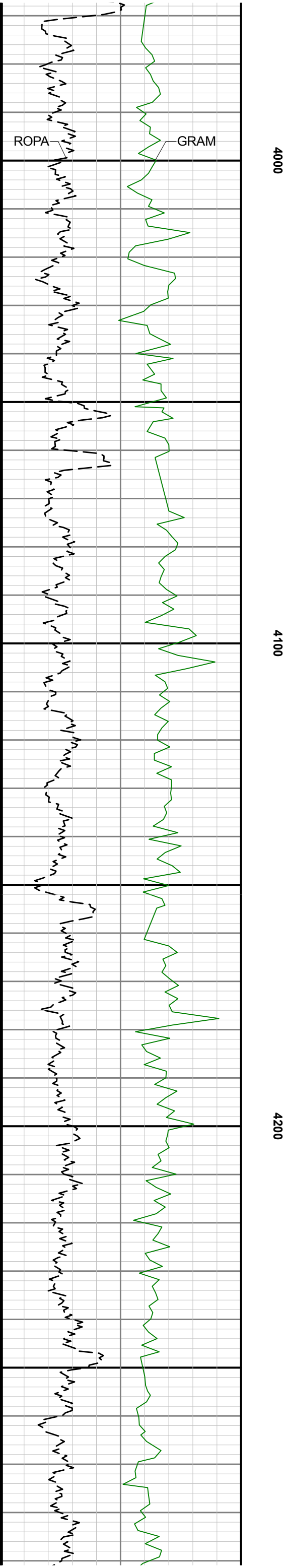
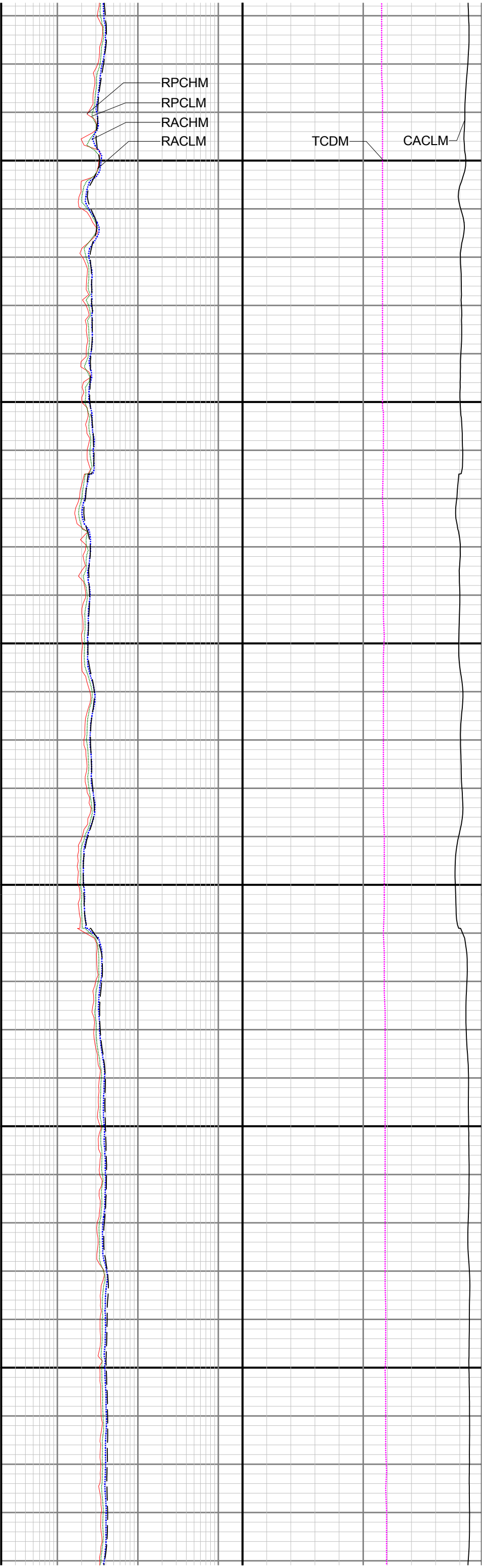
3700

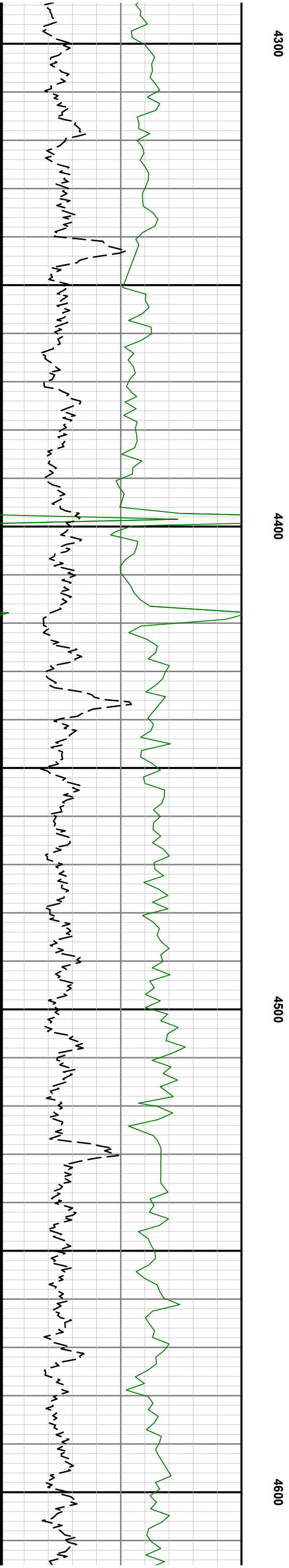
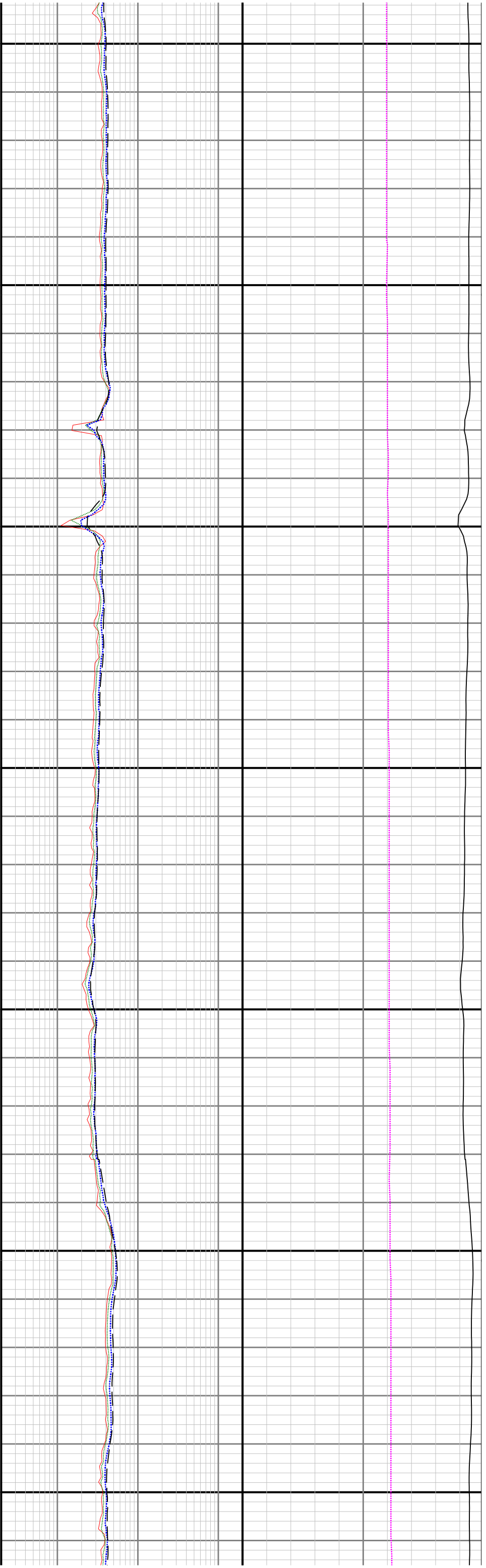
3800

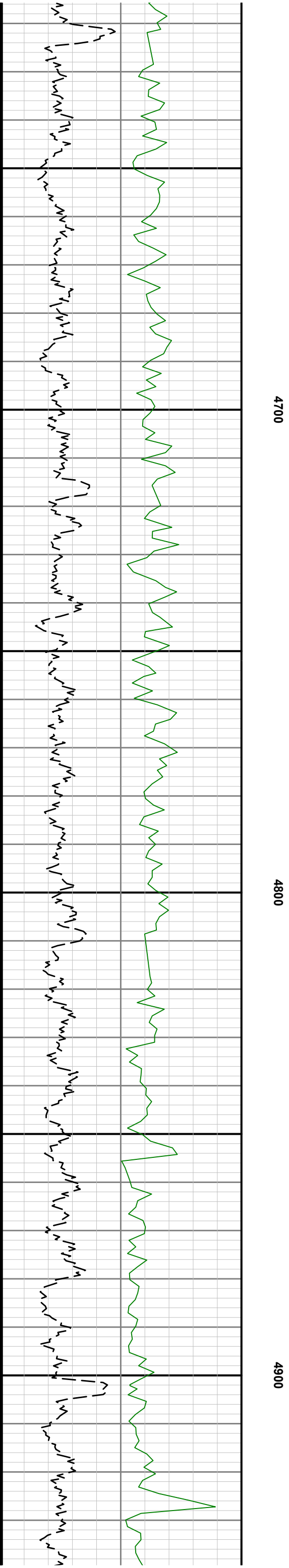
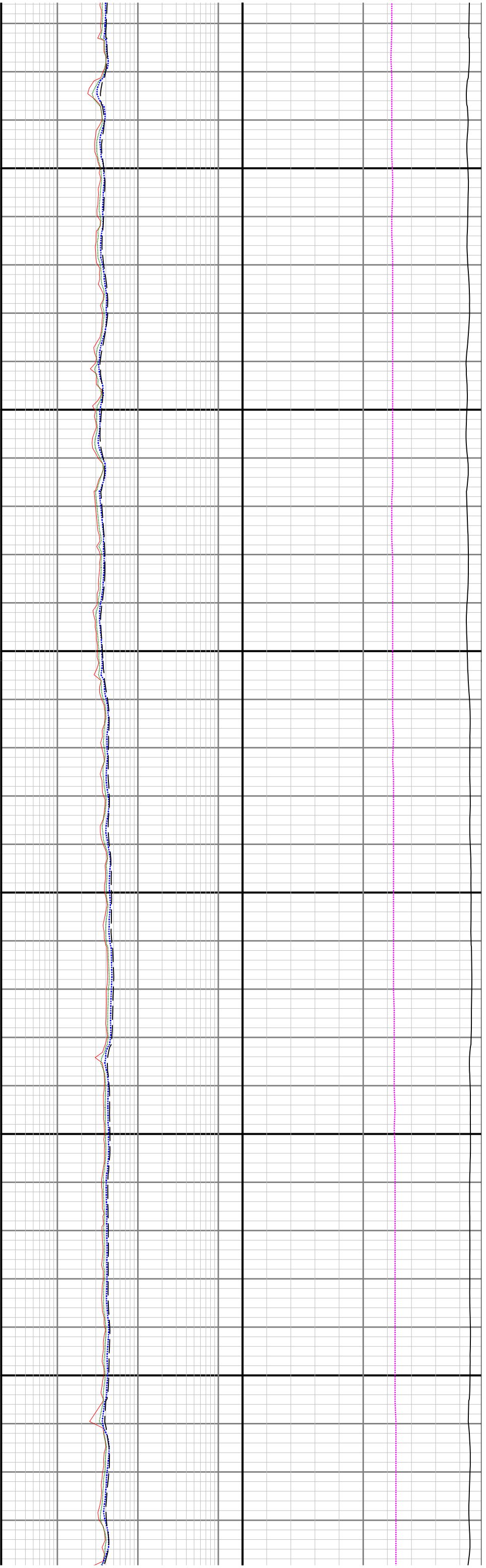
3900

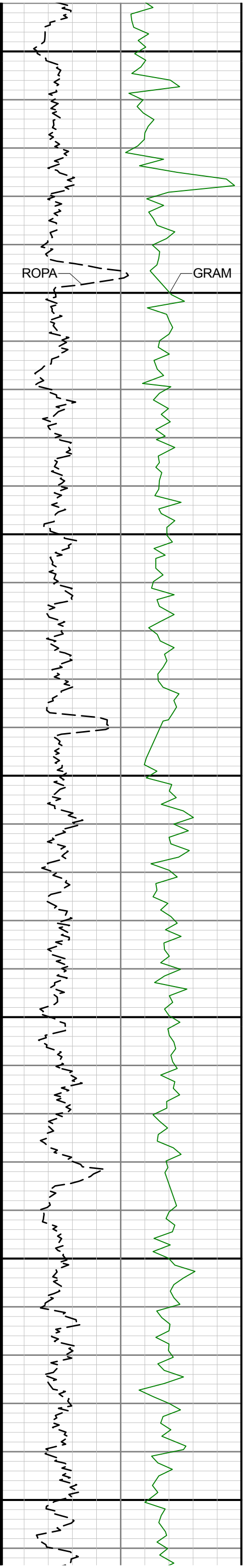








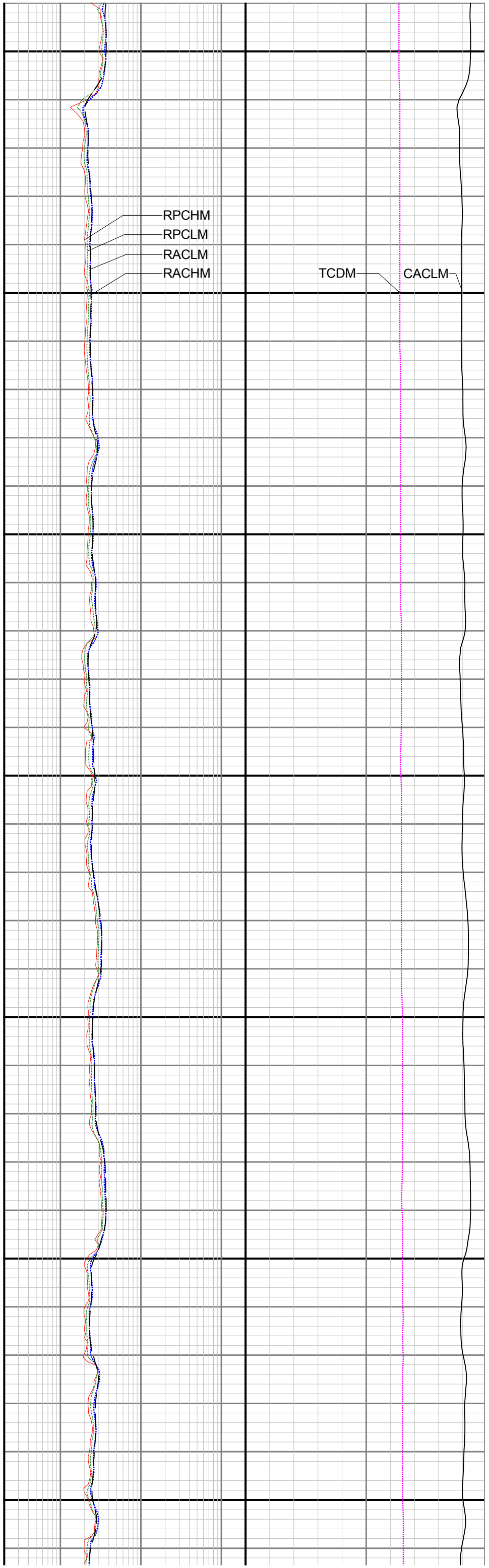


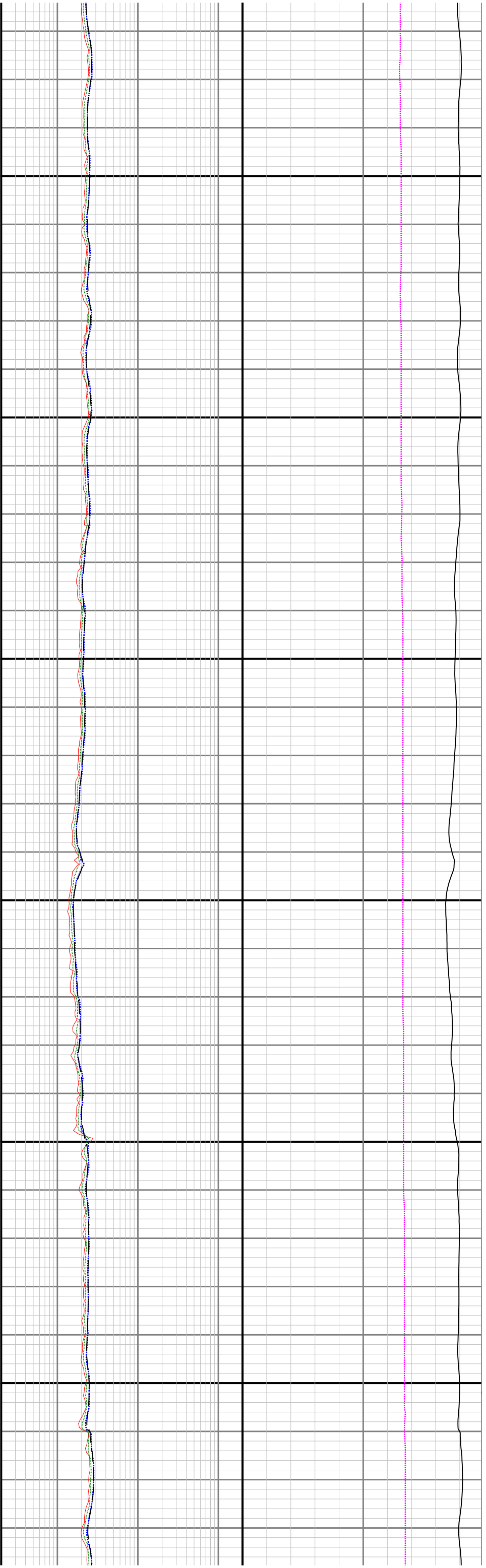


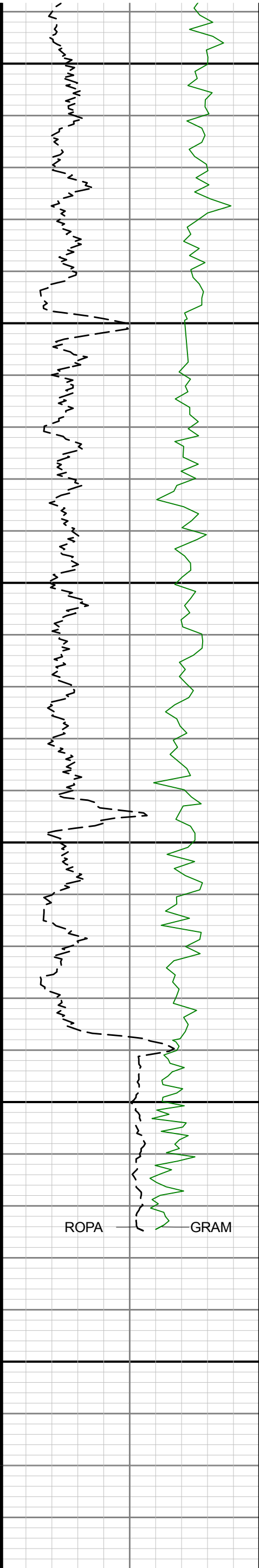
5000

5100

5200







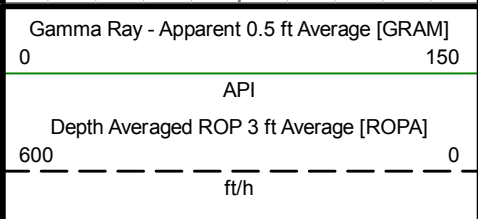
5600

5700

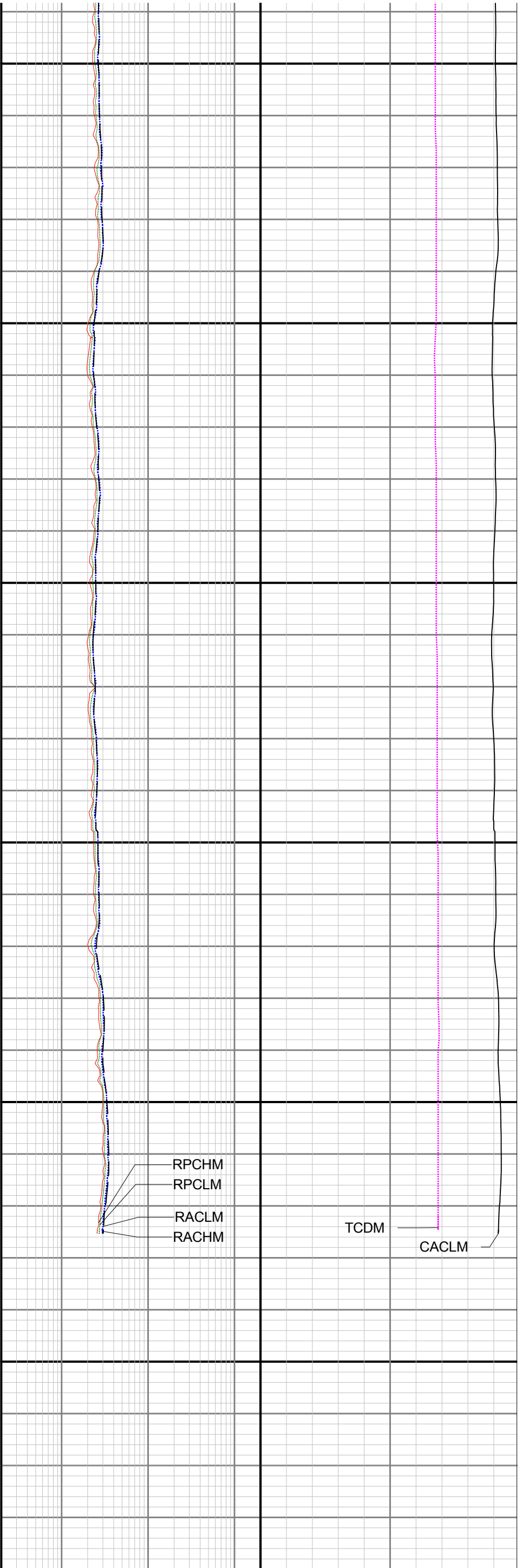
5800

ROPA

GRAM



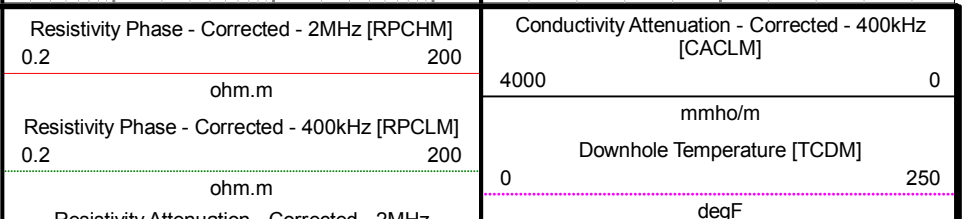
TVD 1:240 feet



RPCHM  
RPCLM  
RACHM  
RACLM

TCDM

CACLM






		Resistivity Attenuation - Corrected - 2MHz [RACHM]		
		0.2	200	
		ohm.m		
		Resistivity Attenuation - Corrected - 400kHz [RACLM]		
		0.2	200	
		ohm.m		

Directional Survey Summary												
Latitude:		040° 24' 53.856" N					Longitude:		104° 20' 18.096" W			
North Reference:		Grid					Drill Depth Zero:		Rig Floor			
Vertical Datum is:		Ground Level					Vertical Datum to DDZ: (ft)		30.00			
Vertical Section North: (m)		0.00					Vertical Section East: (m)		0.00			
Vertical Section Azimuth: (deg)		264.97										
Grid Convergence: (deg)		-0.75					Magnetic Declination: (deg)		7.88			
Total Correction: (deg)		7.13					TVD Calculation Method:		Minimum Curvature			
Magnetic Correction:		Off					Local Magnetic Field: (nT)		52291			
Local Magnetic Dip Angle: (deg)		67.14					Local Gravity Field: (m/s2)		9.800			
Tie-In / Projection	Measured Depth (ft)	Inclination (deg)	Azimuth (deg)	Temperature (degF)	North (ft)	East (ft)	True Vertical Depth (ft)	Vertical Section (ft)	Course Length (ft)	Dog Leg Severity (deg/100ft)	Build Rate (deg/100ft)	Turn Rate (deg/100ft)
Tie-In	0.00	0.00	0.00	N/A	0.00	0.00	0.00	0.00	0.00	0.00	0.00	0.00
	1981.00	0.53	283.48	N/A	2.14	-8.91	1980.97	8.69	1981.00	0.03	0.03	-3.86
	2076.00	4.29	205.01	N/A	-0.98	-10.84	2075.88	10.88	95.00	4.44	3.96	-82.60
	2170.00	6.87	203.45	N/A	-9.33	-14.56	2169.43	15.33	94.00	2.75	2.74	-1.66
	2265.00	8.92	209.76	N/A	-20.94	-20.48	2263.52	22.24	95.00	2.34	2.16	6.64
	2359.00	8.95	198.36	N/A	-34.20	-26.40	2356.39	29.30	94.00	1.88	0.03	-12.13
	2454.00	8.88	182.41	N/A	-48.55	-29.04	2450.26	33.18	95.00	2.59	-0.07	-16.79
	2549.00	8.91	168.18	N/A	-63.07	-27.84	2544.12	33.26	95.00	2.31	0.03	-14.98
	2643.00	8.90	164.91	N/A	-77.22	-24.46	2636.99	31.13	94.00	0.54	-0.01	-3.48
	2738.00	8.97	167.64	N/A	-91.55	-20.96	2730.84	28.90	95.00	0.45	0.07	2.87
	2832.00	8.99	169.60	N/A	-105.93	-18.06	2823.69	27.28	94.00	0.33	0.02	2.09
	2927.00	8.92	173.54	N/A	-120.55	-15.90	2917.53	26.40	95.00	0.65	-0.07	4.15
	3022.00	8.90	180.31	N/A	-135.22	-15.11	3011.39	26.90	95.00	1.10	-0.02	7.13
	3116.00	8.74	184.83	N/A	-149.61	-15.75	3104.28	28.80	94.00	0.76	-0.17	4.81
	3211.00	8.65	188.45	N/A	-163.86	-17.40	3198.19	31.70	95.00	0.58	-0.09	3.81
	3305.00	8.92	198.53	N/A	-177.77	-20.76	3291.09	36.27	94.00	1.66	0.29	10.72
	3400.00	8.92	193.00	N/A	-191.93	-24.76	3384.94	41.49	95.00	0.90	0.00	-5.82
	3494.00	9.17	184.38	N/A	-206.50	-26.97	3477.78	44.97	94.00	1.46	0.27	-9.17
	3589.00	8.89	171.59	N/A	-221.31	-26.47	3571.61	45.77	95.00	2.13	-0.29	-13.46
	3683.00	8.88	160.21	N/A	-235.32	-22.95	3664.49	43.50	94.00	1.87	-0.01	-12.11
	3778.00	8.95	160.81	N/A	-249.20	-18.04	3758.34	39.82	95.00	0.12	0.07	0.63
	3873.00	8.95	165.51	N/A	-263.33	-13.76	3852.18	36.80	95.00	0.77	0.00	4.95
	3967.00	8.81	169.84	N/A	-277.50	-10.66	3945.06	34.95	94.00	0.73	-0.15	4.61
	4062.00	8.82	173.69	N/A	-291.90	-8.58	4038.94	34.14	95.00	0.62	0.01	4.05
	4156.00	8.74	181.21	N/A	-306.20	-7.94	4131.84	34.76	94.00	1.22	-0.09	8.00
	4251.00	8.66	181.12	N/A	-320.57	-8.23	4225.75	36.31	95.00	0.09	-0.08	-0.09
	4345.00	8.68	179.72	N/A	-334.74	-8.34	4318.67	37.65	94.00	0.23	0.02	-1.49
	4440.00	8.63	178.90	N/A	-349.03	-8.16	4412.59	38.73	95.00	0.14	-0.05	-0.86
	4534.00	8.56	190.47	N/A	-362.96	-9.30	4505.54	41.09	94.00	1.84	-0.07	12.31
	4628.00	8.75	190.35	N/A	-376.88	-11.86	4598.47	44.85	94.00	0.20	0.20	-0.13
	4723.00	8.69	182.71	N/A	-391.15	-13.49	4692.38	47.74	95.00	1.22	-0.06	-8.04
	4817.00	8.67	178.64	N/A	-405.33	-13.66	4785.30	49.15	94.00	0.65	-0.02	-4.33
	4912.00	8.56	177.94	N/A	-419.55	-13.24	4879.23	49.97	95.00	0.16	-0.12	-0.74
	5007.00	8.60	179.54	N/A	-433.72	-12.93	4973.17	50.90	95.00	0.25	0.04	1.68
	5101.00	8.14	185.21	N/A	-447.38	-13.47	5066.17	52.65	94.00	1.00	-0.49	6.03
	5196.00	8.16	189.60	N/A	-460.72	-15.21	5160.21	55.54	95.00	0.66	0.02	4.62
	5290.00	7.69	193.13	N/A	-473.42	-17.75	5253.31	59.19	94.00	0.72	-0.50	3.76
	5385.00	8.09	202.18	N/A	-485.81	-21.72	5347.41	64.23	95.00	1.37	0.42	9.53
	5479.00	9.35	209.40	N/A	-498.58	-27.96	5440.33	71.57	94.00	1.77	1.34	7.68
	5574.00	9.00	215.01	N/A	-511.39	-36.01	5534.11	80.71	95.00	1.01	-0.37	5.91
	5668.00	9.37	220.69	N/A	-523.22	-45.22	5626.91	90.92	94.00	1.04	0.39	6.04
	5763.00	9.41	217.72	N/A	-535.22	-55.02	5720.64	101.73	95.00	0.51	0.04	-3.13
	5857.00	8.98	215.21	N/A	-547.30	-63.95	5813.43	111.69	94.00	0.63	-0.46	-2.67
	5952.00	10.64	220.23	N/A	-560.05	-73.89	5907.04	122.71	95.00	1.96	1.75	5.28
	6046.00	17.41	238.07	N/A	-574.14	-91.45	5998.23	141.44	94.00	8.47	7.20	18.98
	6141.00	22.74	255.94	N/A	-586.13	-121.38	6087.51	172.30	95.00	8.50	5.61	18.81
	6235.00	28.50	267.79	N/A	-591.42	-161.47	6172.28	212.70	94.00	8.17	6.13	12.61
	6330.00	37.02	269.65	N/A	-592.47	-212.81	6252.10	263.94	95.00	9.03	8.97	1.96
	6424.00	46.08	266.72	N/A	-594.59	-275.05	6322.38	326.12	94.00	9.86	9.64	-3.12
	6519.00	53.86	262.82	N/A	-601.35	-347.39	6383.45	398.78	95.00	8.77	8.19	-4.11
	6613.00	61.57	261.28	N/A	-612.38	-426.03	6433.63	478.08	94.00	8.32	8.20	-1.64
	6708.00	68.37	263.00	N/A	-624.11	-511.25	6473.80	564.00	95.00	7.34	7.16	1.81
	6803.00	76.67	266.29	N/A	-632.49	-601.38	6502.32	654.52	95.00	9.34	8.74	3.46
	6897.00	88.28	268.17	N/A	-636.97	-694.30	6514.61	747.47	94.00	12.51	12.35	2.00
	6992.00	89.08	265.37	N/A	-642.32	-789.11	6516.79	842.39	95.00	3.06	0.84	-2.95
	7086.00	88.92	263.27	N/A	-651.62	-882.63	6518.44	936.36	94.00	2.24	-0.17	-2.23
	7181.00	89.01	264.08	N/A	-662.09	-977.03	6520.15	1031.32	95.00	0.86	0.09	0.85
	7276.00	89.69	266.71	N/A	-669.71	-1071.71	6521.23	1126.30	95.00	2.86	0.72	2.77
	7370.00	89.82	269.45	N/A	-672.86	-1165.65	6521.63	1220.15	94.00	2.92	0.14	2.91
	7465.00	89.82	270.74	N/A	-672.70	-1260.65	6521.93	1314.77	95.00	1.36	0.00	1.36
	7559.00	89.91	267.96	N/A	-673.77	-1354.63	6522.15	1408.49	94.00	2.96	0.10	-2.96
	7654.00	89.97	271.03	N/A	-674.61	-1449.62	6522.25	1503.18	95.00	3.23	0.06	3.23
	7748.00	89.91	275.66	N/A	-669.12	-1543.43	6522.35	1596.15	94.00	4.93	-0.06	4.93
	7843.00	90.43	275.94	N/A	-659.52	-1637.94	6522.07	1689.46	95.00	0.62	0.55	0.29
	7937.00	90.40	274.99	N/A	-650.57	-1731.51	6521.39	1781.88	94.00	1.01	-0.03	-1.01
	8032.00	89.78	271.41	N/A	-645.27	-1826.35	6521.24	1875.89	95.00	3.82		

	9921.00	89.88	266.38	N/A	-746.00	-3711.92	6525.62	3763.04	95.00	0.34	0.00	-0.34
	10015.00	89.78	266.63	N/A	-751.73	-3805.75	6525.90	3857.00	94.00	0.29	-0.11	0.27
	10110.00	89.91	267.35	N/A	-756.71	-3900.62	6526.16	3951.94	95.00	0.77	0.14	0.76
	10204.00	89.91	268.41	N/A	-760.19	-3994.55	6526.30	4045.82	94.00	1.13	0.00	1.13
	10299.00	89.88	269.79	N/A	-761.68	-4089.54	6526.48	4140.57	95.00	1.45	-0.03	1.45
	10334.00	89.94	270.28	N/A	-761.66	-4124.54	6526.53	4175.43	35.00	1.41	0.17	1.40
	10428.00	89.91	269.80	N/A	-761.60	-4218.54	6526.66	4269.07	94.00	0.51	-0.03	-0.51
	10523.00	89.85	269.90	N/A	-761.85	-4313.54	6526.86	4363.72	95.00	0.12	-0.06	0.11
	10617.00	89.97	270.51	N/A	-761.51	-4407.54	6527.00	4457.33	94.00	0.66	0.13	0.65
	10712.00	89.69	270.33	N/A	-760.81	-4502.53	6527.28	4551.90	95.00	0.35	-0.29	-0.19
	10806.00	89.94	270.12	N/A	-760.44	-4596.53	6527.59	4645.50	94.00	0.35	0.27	-0.22
	10901.00	89.97	269.94	N/A	-760.39	-4691.53	6527.66	4740.13	95.00	0.19	0.03	-0.19
	10996.00	89.78	270.47	N/A	-760.05	-4786.53	6527.87	4834.74	95.00	0.59	-0.20	0.56
	11090.00	89.82	269.66	N/A	-759.95	-4880.53	6528.20	4928.36	94.00	0.86	0.04	-0.86
	11185.00	89.88	267.70	N/A	-762.14	-4975.50	6528.45	5023.16	95.00	2.06	0.06	-2.06
	11279.00	90.43	271.05	N/A	-763.16	-5069.48	6528.19	5116.87	94.00	3.61	0.59	3.56
	11374.00	89.94	267.44	N/A	-764.41	-5164.45	6527.89	5211.59	95.00	3.83	-0.52	-3.80
	11468.00	89.97	265.88	N/A	-769.89	-5258.29	6527.96	5305.54	94.00	1.66	0.03	-1.66
	11563.00	90.00	265.79	N/A	-776.79	-5353.04	6527.98	5400.53	95.00	0.10	0.03	-0.09
	11658.00	89.08	266.34	N/A	-783.31	-5447.81	6528.75	5495.51	95.00	1.13	-0.97	0.58
	11752.00	89.78	266.65	N/A	-789.05	-5541.63	6529.68	5589.47	94.00	0.81	0.74	0.33
	11847.00	89.88	265.15	N/A	-795.85	-5636.38	6529.96	5684.46	95.00	1.58	0.11	-1.58
	11941.00	89.91	265.74	N/A	-803.31	-5730.09	6530.14	5778.45	94.00	0.63	0.03	0.63
	12035.00	89.91	266.80	N/A	-809.43	-5823.89	6530.28	5872.43	94.00	1.13	0.00	1.13
	12130.00	89.75	268.46	N/A	-813.35	-5918.80	6530.57	5967.32	95.00	1.76	-0.17	1.75
	12224.00	89.72	270.92	N/A	-813.86	-6012.79	6531.00	6060.99	94.00	2.62	-0.03	2.62
	12319.00	89.94	271.60	N/A	-811.77	-6107.77	6531.28	6155.42	95.00	0.75	0.23	0.72
	12413.00	89.91	270.62	N/A	-809.95	-6201.75	6531.41	6248.88	94.00	1.04	-0.03	-1.04
	12508.00	89.88	269.91	N/A	-809.51	-6296.75	6531.58	6343.47	95.00	0.75	-0.03	-0.75
	12602.00	89.91	270.55	N/A	-809.14	-6390.75	6531.75	6437.08	94.00	0.68	0.03	0.68
	12697.00	90.06	268.40	N/A	-810.01	-6485.74	6531.78	6531.78	95.00	2.27	0.16	-2.26
	12792.00	89.75	267.18	N/A	-813.67	-6580.66	6531.93	6626.66	95.00	1.33	-0.33	-1.28
	12886.00	89.85	267.80	N/A	-817.79	-6674.57	6532.26	6720.57	94.00	0.67	0.11	0.66
	12981.00	89.88	270.32	N/A	-819.35	-6769.55	6532.49	6815.32	95.00	2.65	0.03	2.65
	13075.00	89.88	271.78	N/A	-817.62	-6863.53	6532.68	6908.79	94.00	1.55	0.00	1.55
	13170.00	89.91	272.26	N/A	-814.27	-6958.47	6532.86	7003.07	95.00	0.51	0.03	0.51
	13264.00	89.82	272.69	N/A	-810.22	-7052.38	6533.08	7096.26	94.00	0.47	-0.10	0.46
	13359.00	89.94	272.02	N/A	-806.31	-7147.30	6533.28	7190.47	95.00	0.72	0.13	-0.71
	13453.00	89.88	269.76	N/A	-804.85	-7241.29	6533.43	7283.97	94.00	2.41	-0.06	-2.40
	13548.00	89.94	268.85	N/A	-806.00	-7336.28	6533.57	7378.69	95.00	0.96	0.06	-0.96
	13642.00	89.91	268.61	N/A	-808.09	-7430.26	6533.70	7472.49	94.00	0.26	-0.03	-0.26
	13737.00	89.85	268.46	N/A	-810.52	-7525.22	6533.90	7567.31	95.00	0.17	-0.06	-0.16
	13831.00	89.78	268.97	N/A	-812.62	-7619.20	6534.20	7661.11	94.00	0.55	-0.07	0.54
	13926.00	89.85	269.27	N/A	-814.08	-7714.19	6534.51	7755.86	95.00	0.32	0.07	0.32
	14021.00	89.85	267.99	N/A	-816.35	-7809.16	6534.76	7850.66	95.00	1.35	0.00	-1.35
	14115.00	89.78	267.01	N/A	-820.45	-7903.07	6535.06	7944.57	94.00	1.05	-0.07	-1.04
	14209.00	89.82	268.88	N/A	-823.82	-7997.00	6535.39	8038.44	94.00	1.99	0.04	1.99
	14304.00	89.82	269.77	N/A	-824.94	-8091.99	6535.69	8133.16	95.00	0.94	0.00	0.94
	14398.00	90.00	271.52	N/A	-823.89	-8185.98	6535.83	8226.70	94.00	1.87	0.19	1.86
	14493.00	90.12	274.89	N/A	-818.58	-8280.82	6535.73	8320.70	95.00	3.55	0.13	3.55
	14588.00	89.91	272.84	N/A	-812.17	-8375.60	6535.71	8414.55	95.00	2.17	-0.22	-2.16
	14682.00	89.85	271.81	N/A	-808.36	-8469.52	6535.91	8507.78	94.00	1.10	-0.06	-1.10
	14777.00	89.91	272.27	N/A	-804.98	-8564.46	6536.11	8602.06	95.00	0.49	0.06	0.48
	14871.00	89.82	270.92	N/A	-802.36	-8658.42	6536.33	8695.43	94.00	1.44	-0.10	-1.44
	14966.00	90.06	268.03	N/A	-803.23	-8753.41	6536.43	8790.12	95.00	3.05	0.25	-3.04
	15060.00	89.85	265.22	N/A	-808.76	-8847.24	6536.50	8884.07	94.00	3.00	-0.22	-2.99
	15155.00	89.91	263.96	N/A	-817.72	-8941.81	6536.70	8979.07	95.00	1.33	0.06	-1.33
	15249.00	89.88	262.30	N/A	-828.96	-9035.13	6536.87	9073.02	94.00	1.77	-0.03	-1.77
	15344.00	89.69	260.68	N/A	-843.02	-9129.08	6537.23	9167.84	95.00	1.72	-0.20	-1.71
	15439.00	89.78	261.43	N/A	-857.79	-9222.92	6537.67	9262.62	95.00	0.80	0.09	0.79
	15533.00	89.82	260.98	N/A	-872.17	-9315.82	6538.00	9356.41	94.00	0.48	0.04	-0.48
	15627.00	89.63	259.17	N/A	-888.37	-9408.41	6538.45	9450.06	94.00	1.94	-0.20	-1.93
	15722.00	90.09	264.82	N/A	-901.59	-9502.44	6538.68	9544.90	95.00	5.97	0.48	5.95
	15816.00	90.22	273.50	N/A	-902.97	-9596.34	6538.42	9638.56	94.00	9.24	0.14	9.23
	15910.00	90.31	273.97	N/A	-896.84	-9690.14	6537.99	9731.46	94.00	0.51	0.10	0.50
	15991.00	90.52	271.75	N/A	-892.80	-9771.03	6537.40	9811.68	81.00	2.75	0.26	-2.74
Projection	16015.00	90.52	271.75	N/A	-892.07	-9795.02	6537.18	9835.51	24.00	0.00	0.00	0.00

LWD MEMORY LOG												
<div></div>			Resistivity Gamma Ray									
Scale:  1:240 TVD			Company: Noble Energy									
			Well: Wells Ranch AF07-645									
Depth Reference:  Driller's Depth			Field: Weld County(Noble NAD 83 Grid)									
			County: Weld					Country: United States				
			State: Colorado									
Status:  Final Print			Surface Location:  Latitude: 040° 24' 53.856" N Longitude: 104° 20' 18.096" W							Other Services:		
API: 05-123-44250-00										Directional		
Job ID: 8645411			SEC: 8                      TWN: 5N                      RGE: 62W									
										Elevations:		
Permanent Datum (P.D.): Ground Level			Elevation: 4704.00 ft		Interval: 1952.00 - 5870.00		Elev. KB: N/A					
Log Measured From: Rig Floor			Above P.D. 30.00 ft		Created: 2017-07-11 11:37:15		Elev. DF: 4734.00 ft					
							Elev. GL: 4704.00 ft					