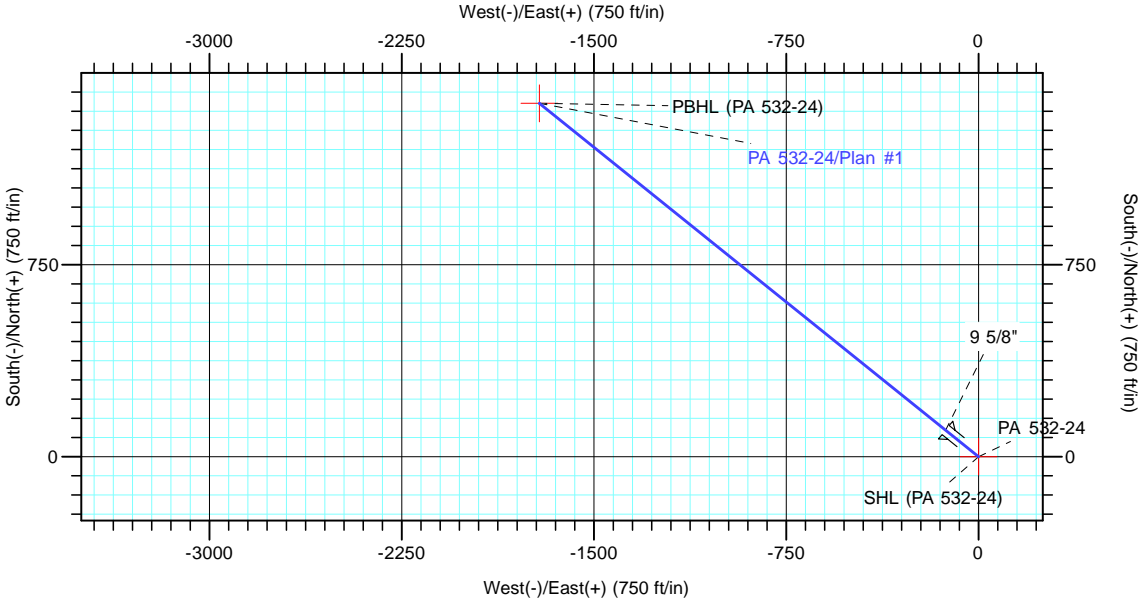
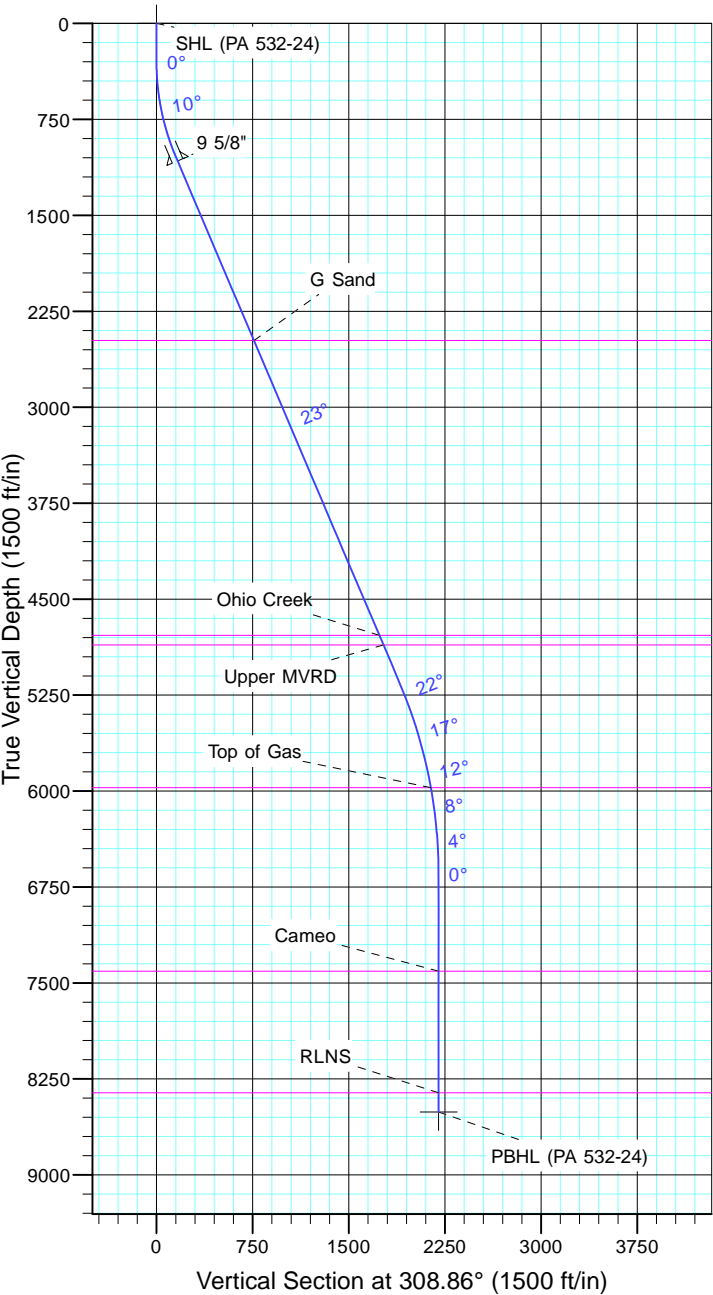


TEP Rocky Mountain LLC
Project: Garfield County, CO NAD83
Site: RWF 13-19
Well: PA 532-24
Wellbore: OH
Design: Plan #1



Azimuths to True North
Magnetic North: 9.69°

Magnetic Field
Strength: 51556.1snT
Dip Angle: 65.61°
Date: 5/9/2017
Model: IGRF2015



CASING DETAILS				FORMATION TOP DETAILS			
TVD	MD	Name	Size	TVDPath	MDPath	Formation	
1076.9	1100.0	9 5/8"	9.625	2479.0	2623.2	G Sand	
				4784.0	5127.3	Ohio Creek	
				4859.0	5208.7	Upper MVRD	
				5974.0	6386.7	Top of Gas	
				7409.0	7825.3	Cameo	
				8359.0	8775.3	RLNS	

DESIGN TARGET DETAILS							
Name	TVD	+N/-S	+E/-W	Northing	Easting	Latitude	Longitude
SHL (PA 532-24)	0.0	0.0	0.0	1618791.30	2312504.00	39° 30' 25.330 N	107° 56' 12.796 W
PBHL (PA 532-24)	8509.0	1380.5	-1713.3	1620217.30	2310828.30	39° 30' 38.974 N	107° 56' 34.658 W

SECTION DETAILS										
Sec	MD	Inc	Azi	TVD	+N/-S	+E/-W	Dleg	TFace	VSect	Target
1	0.0	0.00	0.00	0.0	0.0	0.0	0.00	0.00	0.0	
2	300.0	0.00	0.00	300.0	0.0	0.0	0.00	0.00	0.0	
3	1066.7	23.00	308.86	1046.3	95.3	-118.2	3.00	308.86	151.8	
4	5531.8	23.00	308.86	5156.4	1190.0	-1476.9	0.00	0.00	1896.6	
5	7065.3	0.00	0.00	6649.0	1380.5	-1713.3	1.50	180.00	2200.3	
6	8925.3	0.00	0.00	8509.0	1380.5	-1713.3	0.00	0.00	2200.3	PBHL (PA 532-24)