

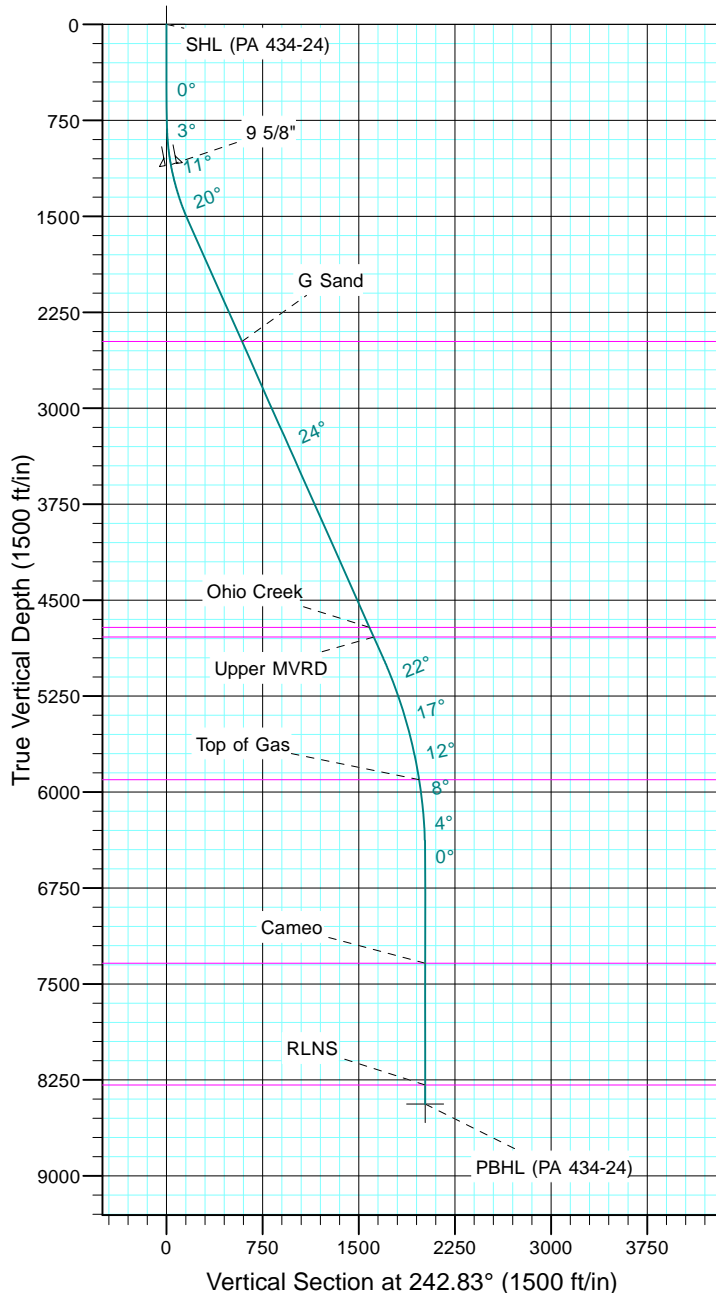
TEP Rocky Mountain LLC

Project: Garfield County, CO NAD83
Site: RWF 13-19
Well: PA 434-24
Wellbore: OH
Design: Plan #1



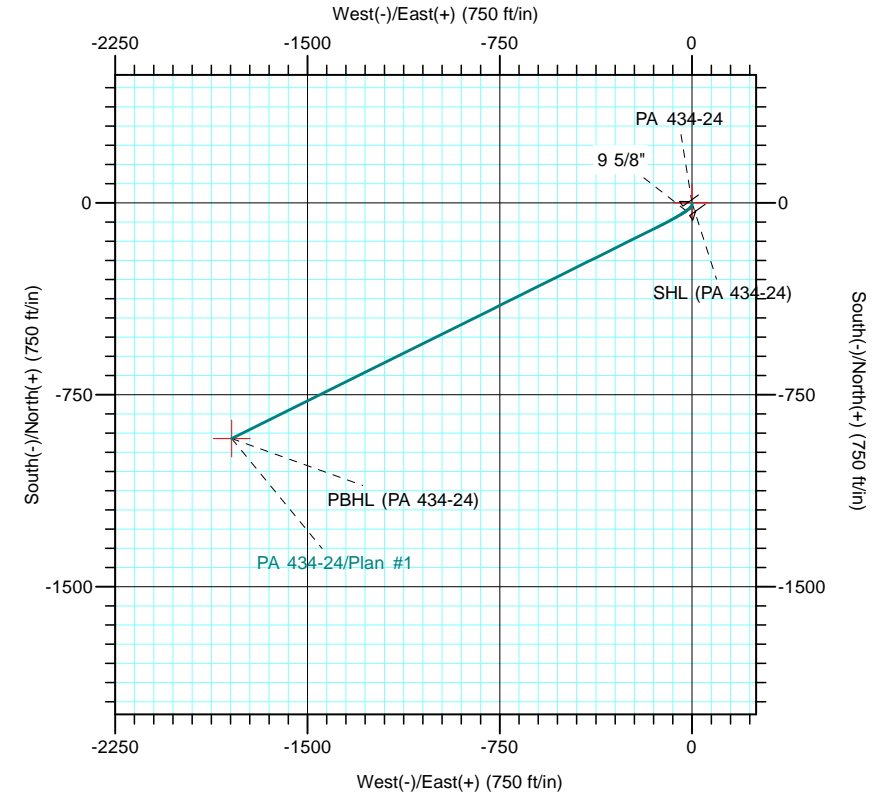
Azimuths to True North
Magnetic North: 9.69°

Magnetic Field
Strength: 51556.1snT
Dip Angle: 65.61°
Date: 5/9/2017
Model: IGRF2015



CASING DETAILS			
TVD	MD	Name	Size
1097.8	1100.0	9 5/8"	9.625

FORMATION TOP DETAILS		
TVDPath	MDPath	Formation
2479.0	2591.9	G Sand
4714.0	5038.4	Ohio Creek
4789.0	5120.5	Upper MVRD
5904.0	6294.3	Top of Gas
7339.0	7731.7	Cameo
8289.0	8681.7	RLNS



		DESIGN TARGET DETAILS						
Name	TVD	+N/-S	+E/-W	Northing	Easting	Latitude	Longitude	
SHL (PA 434-24)	0.0	0.0	0.0	1618768.20	2312583.20	39° 30' 25.123 N	107° 56' 11.778 W	
PBHL (PA 434-24)	8439.0	-921.3	-1794.8	1617895.40	2310764.30	39° 30' 16.017 N	107° 56' 34.678 W	

		SECTION DETAILS									
Sec	MD	Inc	Azi	TVD	+N/-S	+E/-W	Dleg	TFace	Vsect	Target	
1	0.0	0.00	0.00	0.0	0.0	0.0	0.00	0.00	0.0		
2	500.0	0.00	0.00	500.0	0.0	0.0	0.00	0.00	0.0		
3	800.0	3.00	180.00	799.9	-7.9	0.0	1.00	180.00	3.6		
4	1560.3	24.00	243.54	1536.6	-97.8	-140.3	3.00	69.91	169.5		
5	5293.0	24.00	243.54	4946.6	-774.2	-1499.3	0.00	0.00	1687.3		
6	6892.7	0.00	0.00	6500.0	-921.3	-1794.8	1.50	180.00	2017.5		
7	8831.7	0.00	0.00	8439.0	-921.3	-1794.8	0.00	0.00	2017.5	PBHL (PA 434-24)	