

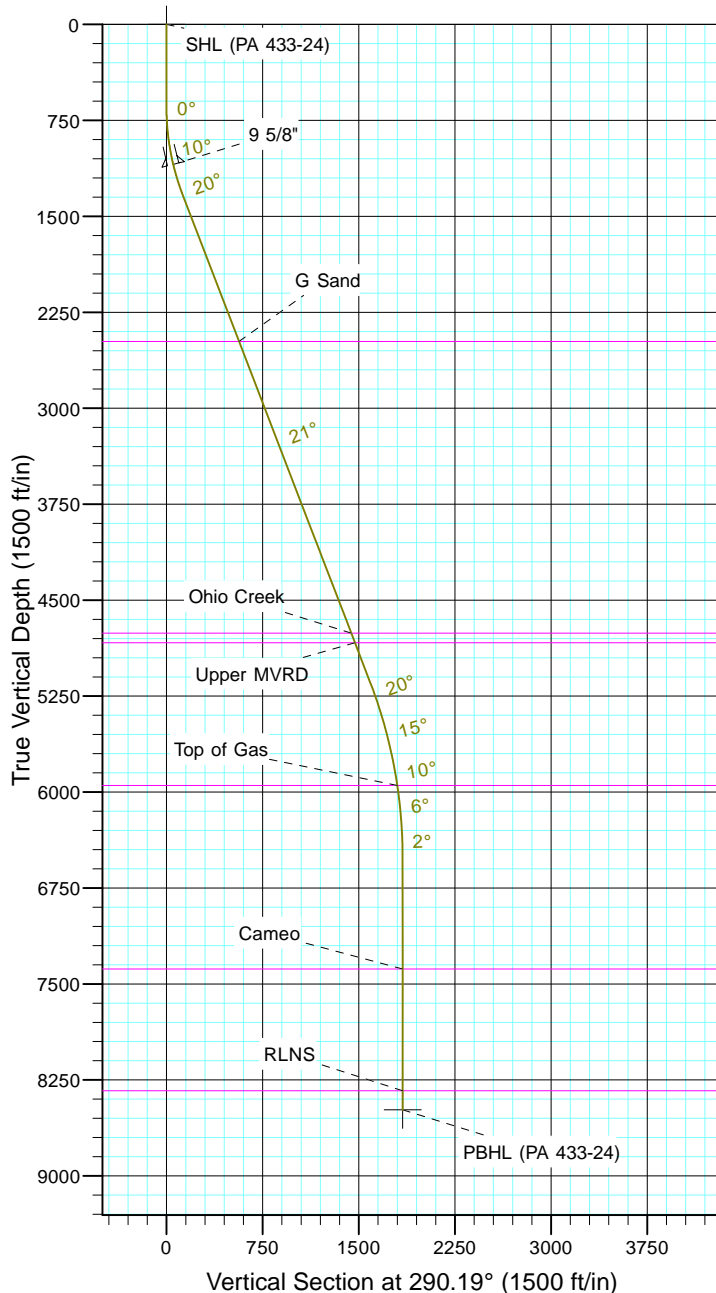
TEP Rocky Mountain LLC

Project: Garfield County, CO NAD83
Site: RWF 13-19
Well: PA 433-24
Wellbore: OH
Design: Plan #1



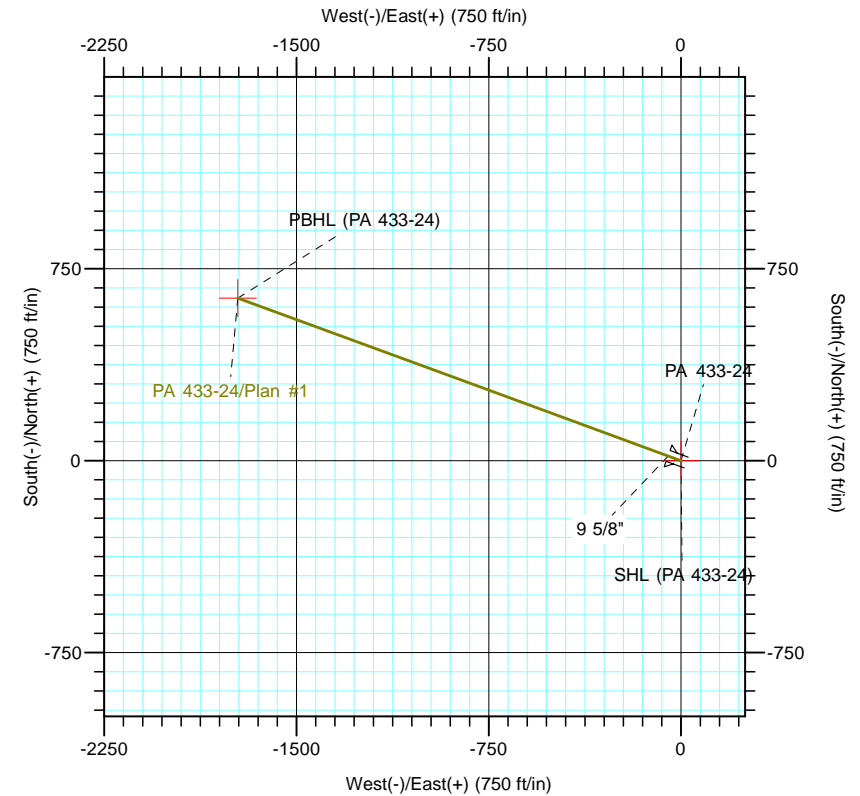
Azimuths to True North
Magnetic North: 9.69°

Magnetic Field
Strength: 51556.1snT
Dip Angle: 65.61°
Date: 5/9/2017
Model: IGRF2015



CASING DETAILS			
TVD	MD	Name	Size
1095.8	1100.0	9 5/8"	9.625

FORMATION TOP DETAILS		
TVDPath	MDPath	Formation
2479.0	2576.0	G Sand
4759.0	5018.3	Ohio Creek
4834.0	5098.6	Upper MVRD
5949.0	6264.5	Top of Gas
7384.0	7701.5	Cameo
8334.0	8651.5	RLNS



DESIGN TARGET DETAILS							
Name	TVD	+N/-S	+E/-W	Northing	Easting	Latitude	Longitude
SHL (PA 433-24)	0.0	0.0	0.0	1618787.10	2312518.40	39° 30' 25.292 N	107° 56' 12.611 W
PBHL (PA 433-24)	8484.0	635.6	-1728.5	1619468.80	2310807.60	39° 30' 31.574 N	107° 56' 34.665 W

SECTION DETAILS										
Sec	MD	Inc	Azi	TVD	+N/-S	+E/-W	Dleg	TFace	VSect	Target
1	0.0	0.00	0.00	0.0	0.0	0.0	0.00	0.00	0.0	
2	650.0	0.00	0.00	650.0	0.0	0.0	0.00	0.00	0.0	
3	1350.1	21.00	290.19	1334.5	43.8	-119.1	3.00	290.19	126.9	
4	5426.4	21.00	290.19	5140.0	548.0	-1490.3	0.00	0.00	1587.9	
5	6826.5	0.00	0.00	6509.0	635.6	-1728.5	1.50	180.00	1841.6	
6	8801.5	0.00	0.00	8484.0	635.6	-1728.5	0.00	0.00	1841.6	PBHL (PA 433-24)