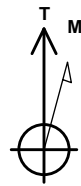


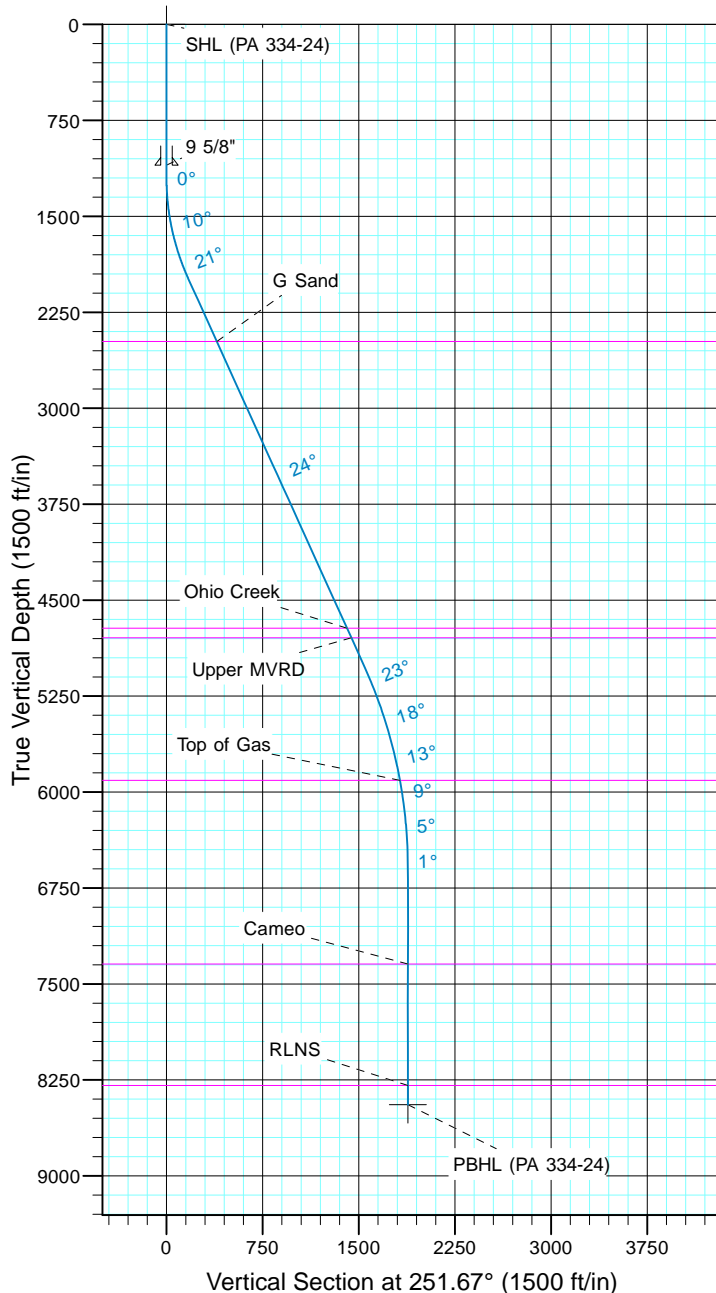
TEP Rocky Mountain LLC

Project: Garfield County, CO NAD83
Site: RWF 13-19
Well: PA 334-24
Wellbore: OH
Design: Plan #1



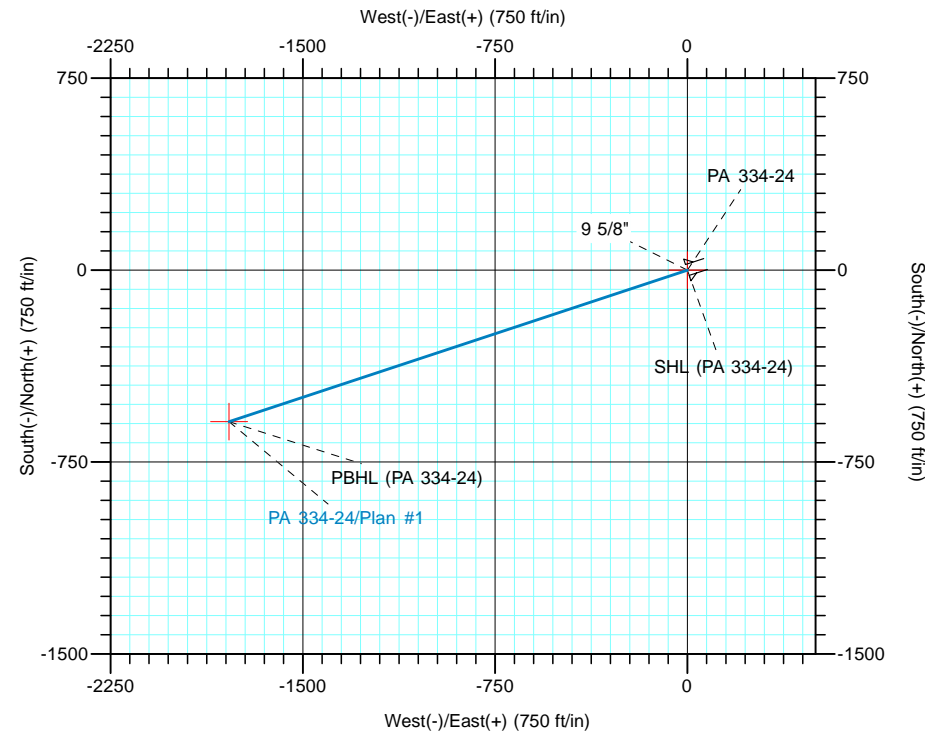
Azimuths to True North
Magnetic North: 9.69°

Magnetic Field
Strength: 51556.1snT
Dip Angle: 65.61°
Date: 5/9/2017
Model: IGRF2015



CASING DETAILS			
TVD	MD	Name	Size
1100.0	1100.0	9 5/8"	9.625

FORMATION TOP DETAILS		
TVDPPath	MDPath	Formation
2479.0	2551.3	G Sand
4719.0	5010.4	Ohio Creek
4794.0	5092.7	Upper MVRD
5909.0	6274.4	Top of Gas
7344.0	7713.2	Cameo
8294.0	8663.2	RLNS



DESIGN TARGET DETAILS							
Name	TVD	+N/-S	+E/-W	Northing	Easting	Latitude	Longitude
SHL (PA 334-24)	0.0	0.0	0.0	1618770.31	2312575.99	39° 30' 25.142 N	107° 56' 11.871 W
PBHL (PA 334-24)	8444.0	-592.3	-1787.3	1618226.20	2310773.40	39° 30' 19.288 N	107° 56' 34.675 W

SECTION DETAILS										
Sec	MD	Inc	Azi	TVD	+N/-S	+E/-W	Dleg	TFace	VFace	Target
1	0.0	0.00	0.00	0.0	0.0	0.0	0.00	0.00	0.0	
2	1200.0	0.00	0.00	1200.0	0.0	0.0	0.00	0.00	0.0	
3	2012.3	24.37	251.67	1988.0	-53.5	-161.5	3.00	251.67	170.2	
4	5338.5	24.37	251.67	5017.9	-485.2	-1464.3	0.00	0.00	1542.6	
5	6963.2	0.00	0.00	6594.0	-592.3	-1787.3	1.50	180.00	1882.9	
6	8813.2	0.00	0.00	8444.0	-592.3	-1787.3	0.00	0.00	1882.9	PBHL (PA 334-24)