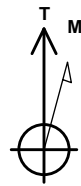


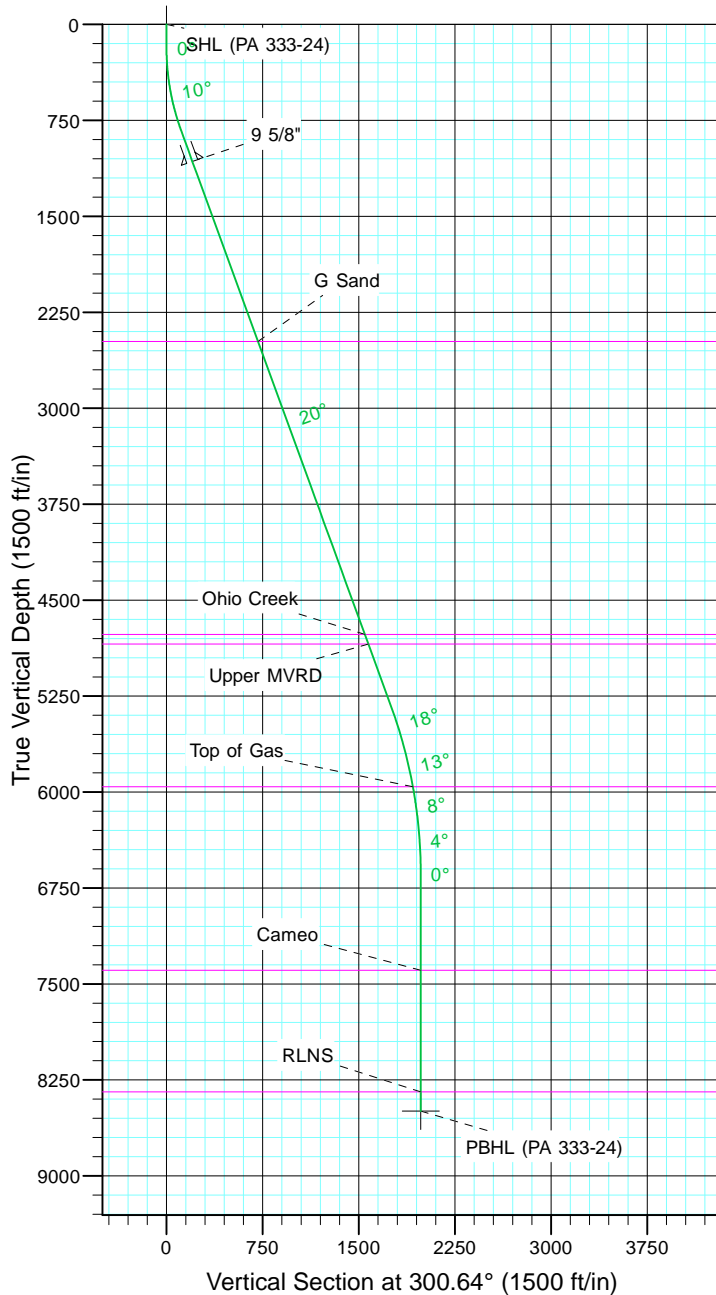
TEP Rocky Mountain LLC

Project: Garfield County, CO NAD83
Site: RWF 13-19
Well: PA 333-24
Wellbore: OH
Design: Plan #1



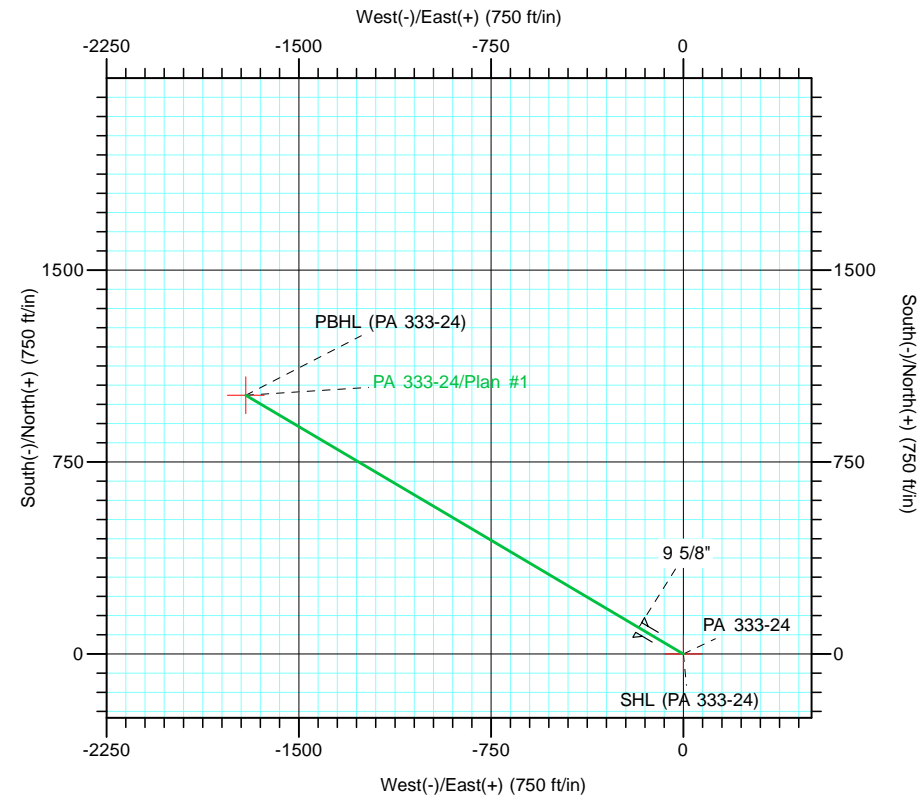
Azimuths to True North
Magnetic North: 9.69°

Magnetic Field
Strength: 51556.1snT
Dip Angle: 65.61°
Date: 5/9/2017
Model: IGRF2015



CASING DETAILS			
TVD	MD	Name	Size
1071.3	1100.0	9 5/8"	9.625

FORMATION TOP DETAILS		
TVDPATH	MDPATH	FORMATION
2479.0	2598.1	G Sand
4769.0	5035.0	Ohio Creek
4844.0	5114.8	Upper MVRD
5959.0	6284.5	Top of Gas
7394.0	7723.1	Cameo
8344.0	8673.1	RLNS



DESIGN TARGET DETAILS							
Name	TVD	+N/-S	+E/-W	Northing	Easting	Latitude	Longitude
SHL (PA 333-24)	0.0	0.0	0.0	1618793.40	2312496.80	39° 30' 25.349 N	107° 56' 12.889 W
PBHL (PA 333-24)	8494.0	1010.8	-1706.4	1619849.60	2310818.10	39° 30' 35.339 N	107° 56' 34.662 W

SECTION DETAILS										
Sec	MD	Inc	Azi	TVD	+N/-S	+E/-W	Dleg	TFace	VSect	Target
1	0.0	0.00	0.00	0.0	0.0	0.0	0.00	0.00	0.0	
2	180.0	0.00	0.00	180.0	0.0	0.0	0.00	0.00	0.0	
3	846.6	20.00	300.64	833.1	58.7	-99.1	3.00	300.64	115.2	
4	5635.9	20.00	300.64	5333.7	893.4	-1508.3	0.00	0.00	1753.0	
5	6969.1	0.00	0.00	6640.0	1010.8	-1706.4	1.50	180.00	1983.3	
6	8823.1	0.00	0.00	8494.0	1010.8	-1706.4	0.00	0.00	1983.3	PBHL (PA 333-24)