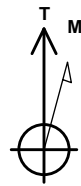


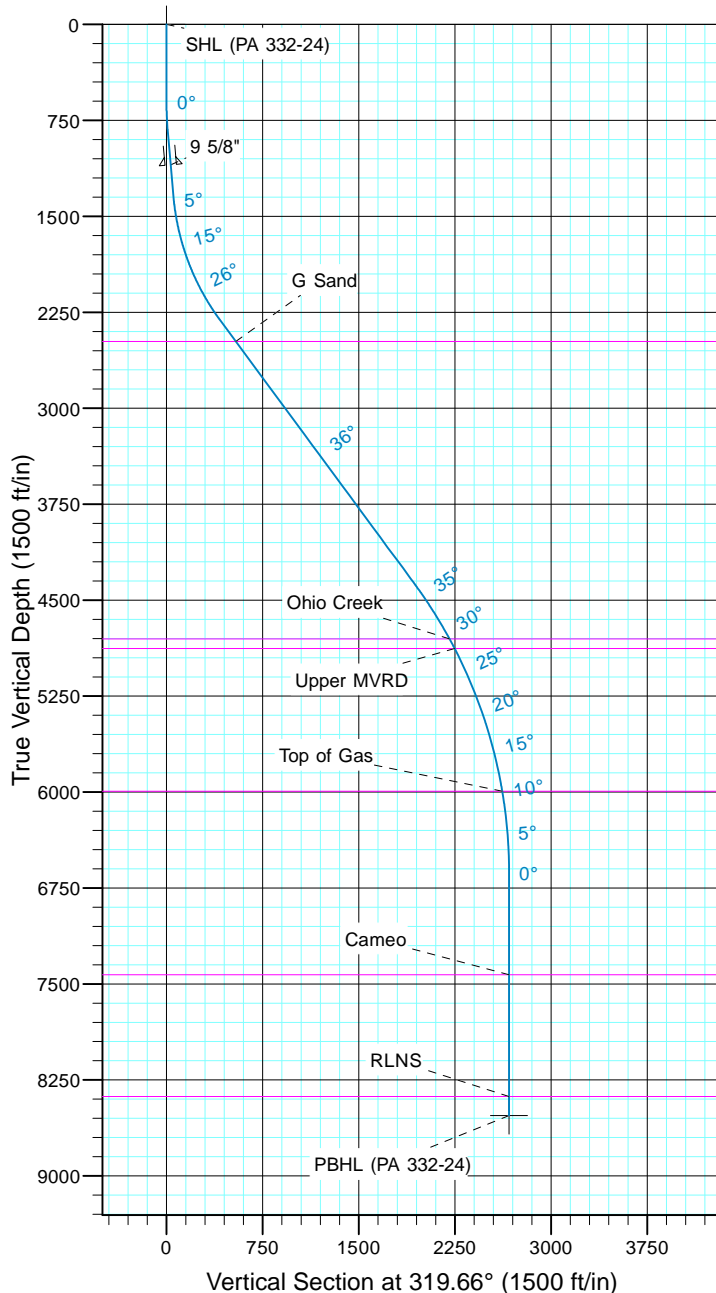
TEP Rocky Mountain LLC

Project: Garfield County, CO NAD83
Site: RWF 13-19
Well: PA 332-24
Wellbore: OH
Design: Plan #1



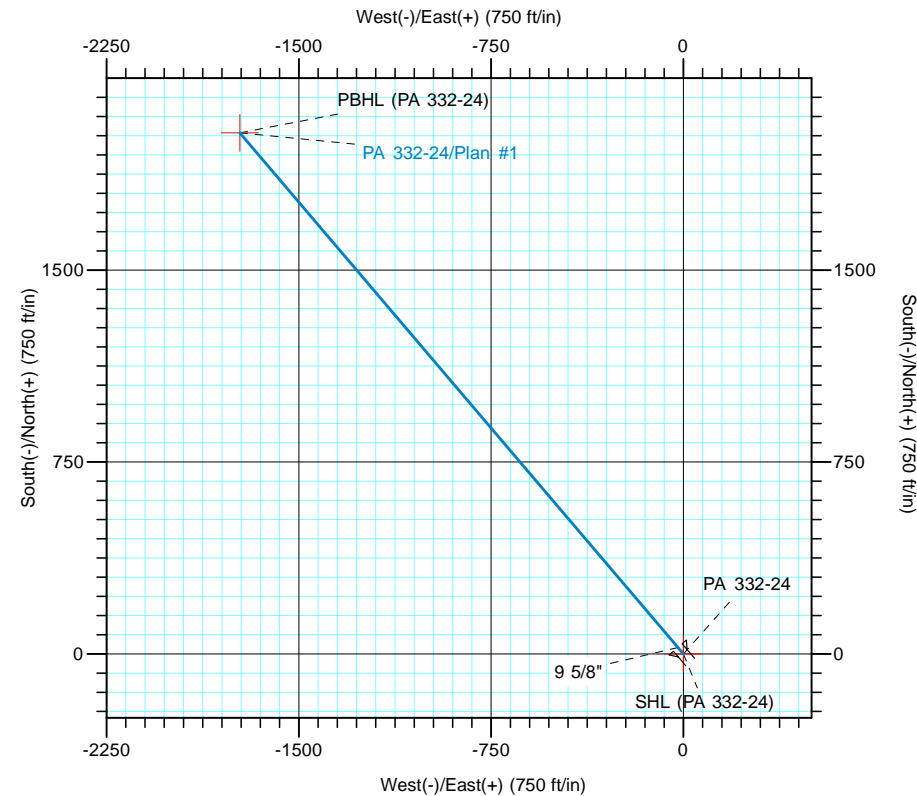
Azimuths to True North
Magnetic North: 9.69°

Magnetic Field
Strength: 51556.1snT
Dip Angle: 65.61°
Date: 5/9/2017
Model: IGRF2015



| CASING DETAILS | | | |
|----------------|--------|--------|-------|
| TVD | MD | Name | Size |
| 1098.7 | 1100.0 | 9 5/8" | 9.625 |

| FORMATION TOP DETAILS | | |
|-----------------------|--------|------------|
| TVDPATH | MDPATH | FORMATION |
| 2479.0 | 2600.7 | G Sand |
| 4804.0 | 5463.1 | Ohio Creek |
| 4879.0 | 5548.0 | Upper MVRD |
| 5994.0 | 6727.9 | Top of Gas |
| 7429.0 | 8165.9 | Cameo |
| 8379.0 | 9115.9 | RLNS |



| Name | TVD | +N/-S | +E/-W | Northing | Easting | Latitude | Longitude |
|------------------|--------|--------|---------|------------|------------|------------------|-------------------|
| SHL (PA 332-24) | 0.0 | 0.0 | 0.0 | 1618796.70 | 2312521.20 | 39° 30' 25.388 N | 107° 56' 12.579 W |
| PBHL (PA 332-24) | 8529.0 | 2036.7 | -1729.9 | 1620879.10 | 2310846.50 | 39° 30' 45.518 N | 107° 56' 34.653 W |

| SECTION DETAILS | | | | | | | | | | |
|-----------------|--------|-------|--------|--------|--------|---------|------|--------|--------|------------------|
| Sec | MD | Inc | Azi | TVD | +N/-S | +E/-W | Dleg | TFace | Vsect | Target |
| 1 | 0.0 | 0.00 | 0.00 | 0.0 | 0.0 | 0.0 | 0.00 | 0.00 | 0.0 | |
| 2 | 600.0 | 0.00 | 0.00 | 600.0 | 0.0 | 0.0 | 0.00 | 0.00 | 0.0 | |
| 3 | 850.0 | 5.00 | 319.66 | 849.7 | 8.3 | -7.1 | 2.00 | 319.66 | 10.9 | |
| 4 | 1350.0 | 5.00 | 319.66 | 1347.8 | 41.5 | -35.3 | 0.00 | 0.00 | 54.5 | |
| 5 | 2395.2 | 36.36 | 319.66 | 2313.5 | 319.3 | -271.2 | 3.00 | 0.00 | 419.0 | |
| 6 | 4942.2 | 36.36 | 319.66 | 4364.7 | 1470.1 | -1248.6 | 0.00 | 0.00 | 1928.8 | |
| 7 | 7365.9 | 0.00 | 0.00 | 6629.0 | 2036.7 | -1729.9 | 1.50 | 180.00 | 2672.3 | |
| 8 | 9265.9 | 0.00 | 0.00 | 8529.0 | 2036.7 | -1729.9 | 0.00 | 0.00 | 2672.3 | PBHL (PA 332-24) |

Plan: Plan #1 (PA 332-24/OH)

RWF 13-19

Created By: Tyler Gillam Date: 17:20, June 21 2017