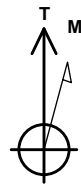


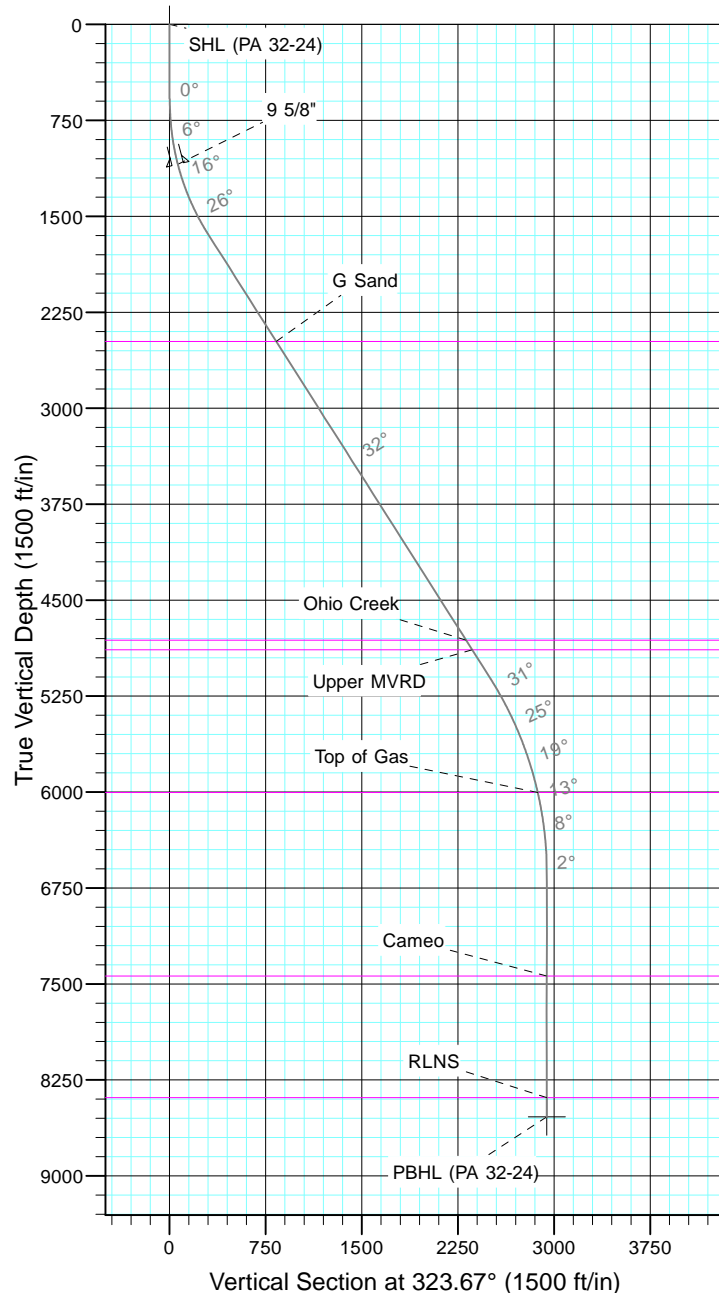
TEP Rocky Mountain LLC

Project: Garfield County, CO NAD83
Site: RWF 13-19
Well: PA 32-24
Wellbore: OH
Design: Plan #1



Azimuths to True North
Magnetic North: 9.69°

Magnetic Field
Strength: 51556.1snT
Dip Angle: 65.61°
Date: 5/9/2017
Model: IGRF2015

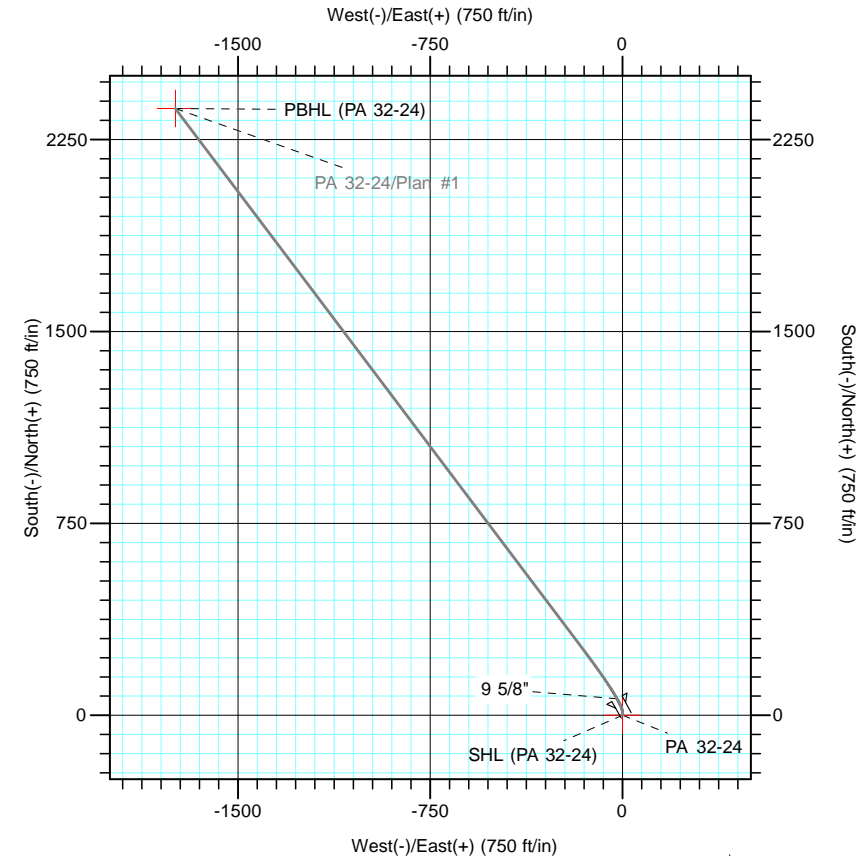


CASING DETAILS			
TVD	MD	Name	Size
1094.3	1100.0	9 5/8"	9.625

FORMATION TOP DETAILS		
TVDPath	MDPath	Formation
2479.0	2690.5	G Sand
4814.0	5455.6	Ohio Creek
4889.0	5544.4	Upper MVRD
6004.0	6778.7	Top of Gas
7439.0	8219.0	Cameo
8389.0	9169.0	RLNS

DESIGN TARGET DETAILS						
Name	TVD	+N-/S	+E-/W	Northing	Easting	Latitude
SHL (PA 32-24)	0.0	0.0	0.0	1618792.50	2312535.60	39° 30' 25.350 N
PBHL (PA 32-24)	8539.0	2371.5	-1744.2	1621209.90	2310855.60	39° 30' 48.788 N

SECTION DETAILS										
Sec	MD	Inc	Azi	TVD	+N-/S	+E-/W	Dleg	TFace	VSect	Target
1	0.0	0.00	0.00	0.0	0.0	0.0	0.00	0.00	0.0	
2	500.0	0.00	0.00	500.0	0.0	0.0	0.00	0.00	0.0	
3	750.0	5.00	0.00	749.7	10.9	0.0	2.00	0.00	8.8	
4	1701.2	32.39	323.04	1643.6	261.1	-156.4	3.00	-42.39	303.0	
5	5799.6	32.39	323.04	5104.5	2015.4	-1476.3	0.00	0.00	2498.2	
6	7419.0	0.00	0.00	6639.0	2371.5	-1744.2	2.00	180.00	2943.8	
7	9319.0	0.00	0.00	8539.0	2371.5	-1744.2	0.00	0.00	2943.8	PBHL (PA 32-24)



Plan: Plan #1 (PA 32-24/OH)

RWF 13-19

Created By: Tyler Gillam Date: 16:16, June 21 2017