

**PETROLEUM DEVELOPMENT CORP
BOX 26
BRIDGEPORT, WV 26330**

Wells Ranch 10C

Interval 1
Weld County, Colorado

Sales Order: 4555590

Post Job Report

For: Jesse Silva
Date: Wednesday, August 09, 2006

Notice: Although the information contained in this report is based on sound engineering practices, the copyright owner(s) does (do) not accept any responsibility whatsoever, in negligence or otherwise, for any loss or damage arising from the possession or use of the report whether in terms of correctness or otherwise. The application, therefore, by the user of this report or any part thereof, is solely at the user's own risk.

HALLIBURTON

1.0 EXECUTIVE SUMMARY

Jesse Silva
PETROLEUM DEVELOPMENT CORP
BOX 26
BRIDGEPORT, WV 26330

Dear Jesse Silva,

Halliburton appreciates the opportunity to perform the stimulation treatment on the Wells Ranch 10C. A pre-job safety meeting was held where details of the job were discussed, potential safety hazards were reviewed, and environmental compliance procedures were outlined. Pump time was 93.84 min.

The proposed treatment for Wells Ranch 10C Niobrara consisted of:

- 500 gal of Hydrochloric Acid 15 %.
- 70000 gal of FR Water carrying 250 100*lb of SAND-PREMIUM WHITE-30/50, BULK (100009377).
- 104000 gal of SILVERSTIM FLUID, AGGRESSIVE - SBM (189530) carrying 2500 100*lb of SAND-CRC PREMIUM-12/20, 4000 LB BAG (101357950).

The treatment actually pumped consisted of:

- 20076 gal of Hydrochloric Acid 15 %.
- 55997 gal of FR Water carrying 275.33 100*lb of SAND-PREMIUM WHITE-30/50, BULK (100009377).
- 96505 gal of SILVERSTIM FLUID, AGGRESSIVE - SBM (189530) carrying 2462.43 100*lb of SAND-CRC PREMIUM-12/20, 4000 LB BAG (101357950).

The average BH treating rate was 46.6 bpm and average WH pressure was 4422 psi.

The total liquid load to recover is 172578 gal.

Halliburton is strongly committed to quality control on location. Before and after each job all chemicals, proppants, and fluid volumes are measured to assure the highest level of quality control. Tank fluid analysis, crosslink time, and break tests are performed before each job in order to optimize the performance of the treatment fluids.

Halliburton maintains a continuous quality improvement process and appreciates any comments or suggestions that you may have. Halliburton again thanks you for the opportunity to perform service work on this well. We hope to be your solutions provider for future projects.

Respectfully,

2.4 Initial Conditions

Surface Fluid Temp	65.0	°F
BH Static Temperature	85.0	°F
Expected BH Treating Pressure	5440	psi
Reservoir Pressure	2857	psi
Static Column Used	No	
Wellbore Fluid	Brine	
Top Fluid Depth	1.0	ft
Closed in WH Pressure	0	psi
BH Gauge Used	No	

3.0 ACTUAL STAGE SUMMARY

3.1 Stage Summary

Stage Number	Start Time	Max Treating Pressure psi	Avg Treating Pressure psi	Max Slurry Rate bpm	Avg Slurry Rate bpm	Avg Clean Rate bpm	Slurry Volume gal	Clean Volume gal	Proppant Mass Pumped 100*lb	Avg HHP hp
2	07:03:10	5639	3836	43.2	22.6	22.6	20080	20076	0.98	2128
3	07:26:04	4849	4751	55.6	51.5	50.4	51056	49939	244.89	6000
4	07:49:39	4854	4725	55.7	55.7	54.4	6197	6058	30.44	6444
5	07:52:18	4908	4850	55.6	55.6	53.1	7396	7073	70.87	6603
6	07:55:29	4867	4678	55.7	55.6	51.0	36096	33082	660.92	6378
7	08:10:55	4558	4442	55.7	55.7	49.0	25083	22082	658.26	6063
8	08:21:39	4433	4413	55.7	55.7	49.0	14927	13142	391.52	6019
9	08:28:02	4414	4338	55.7	55.7	47.2	11903	10086	398.53	5919
10	08:33:07	4299	4280	55.7	55.7	47.2	4066	3446	135.85	5842
11	08:34:51	4240	4195	55.6	55.2	46.6	4019	3397	131.97	5671
12	08:36:35	4651	4143	55.1	46.2	45.4	4265	4197	14.51	4687
Total							185088	172578	2738.73	

3.2 Bottom Hole Stage Summary

Stage Number	Start Time	Max BH Pressure psi	Avg BH Pressure psi	Max BH Rate bpm	Avg BH Rate bpm	Max BH Conc lb/gal	Avg BH Conc lb/gal
0	07:03:10	8292	5634	19.1	9.5	0.00	0.00
2	07:15:18	7252	7066	45.8	36.4	0.30	0.00
3	07:28:22	7214	6968	55.5	52.3	0.66	0.49
4	07:51:28	6540	6464	55.5	55.4	0.92	0.50
5	07:54:07	6551	6514	55.4	55.3	1.58	1.01
6	07:57:18	6561	6437	55.5	55.4	2.51	2.01
7	08:12:44	6380	6326	55.5	55.5	3.12	3.00
8	08:23:28	6333	6314	55.5	55.4	3.66	2.99
9	08:29:51	6341	6306	55.5	55.4	4.09	3.97
10	08:34:56	6241	6199	55.2	54.9	4.08	3.96
11	08:36:41	6468	6186	54.8	47.9	4.10	3.86
11	08:38:39	6087	5803	11.6	4.2	2.99	2.89

4.0 PERFORMANCE HIGHLIGHTS

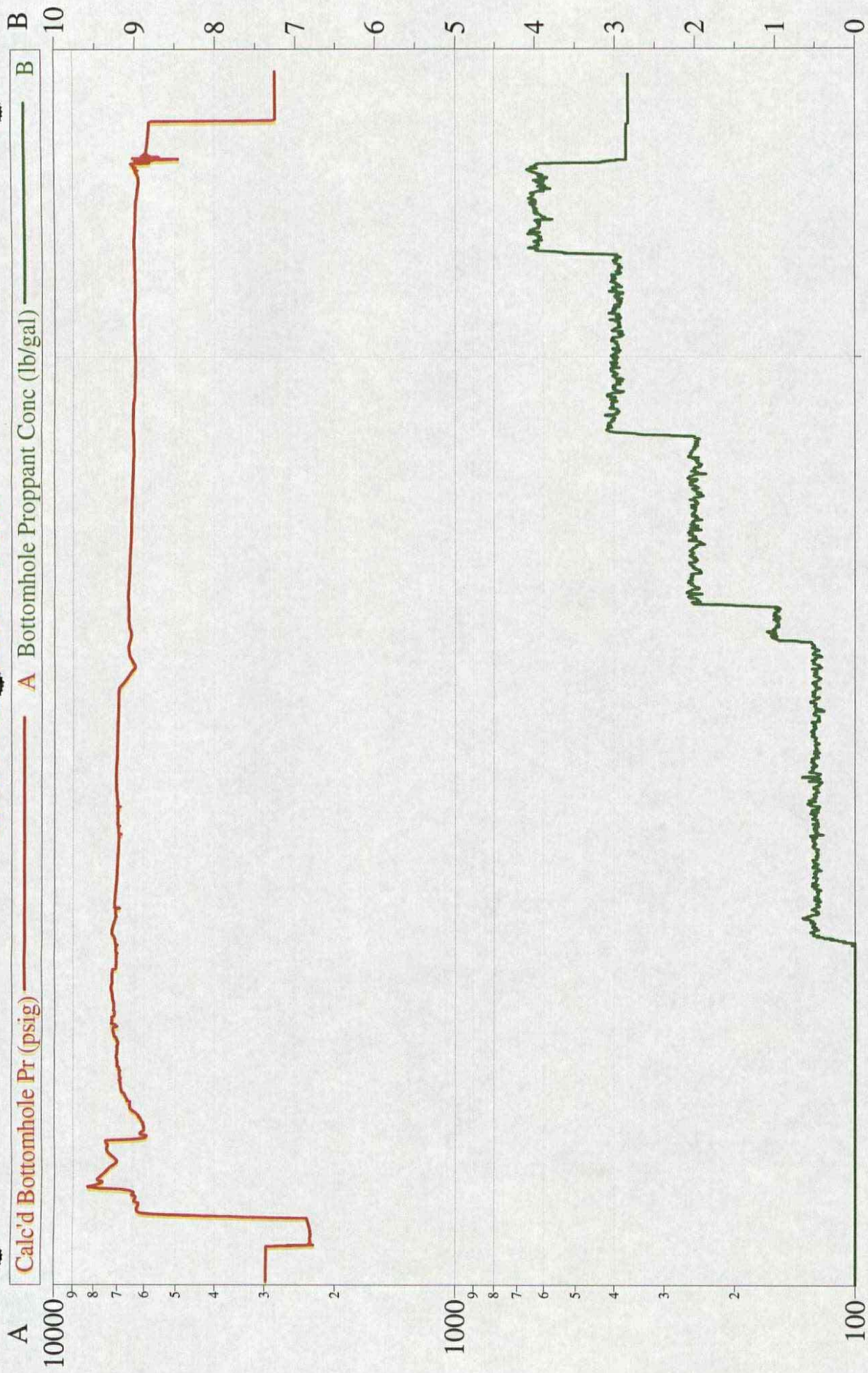
4.1 Job Summary

Start Time	07:03:10	
End Time	08:47:07	
Time	103.95	min
Pump Time	93.84	min
Max Treating Pressure	5639	psi
Avg Treating Pressure	4422	psi
Avg Clean Rate	43.8	bpm
Clean Volume	172578	gal
Max Slurry Rate	55.7	bpm
Avg Slurry Rate	47.0	bpm
Slurry Volume	185088	gal
Max WH Rate	55.7	bpm
Avg WH Rate	47.0	bpm
WH Volume	185089	gal
Max Proppant Concentration	4.08	lb/gal
Avg Proppant Concentration	1.41	lb/gal
Proppant Mass Pumped	2738.73	100*lb
Avg HHP	5088	hp
BH Max Treating Pressure	8292	psi
BH Avg Treating Pressure	6529	psi
BH Max Rate	55.5	bpm
BH Avg Rate	46.6	bpm
BH Slurry Volume	184236	gal
BH Clean Volume	171793	gal
BH Max Proppant Concentration	4.10	lb/gal
BH Avg Proppant Concentration	1.42	lb/gal
Proppant in Wellbore	16.88	100*lb
Proppant in Formation	2721.85	100*lb
Load to Recover	172578	gal

4.2 Job Event Log

Time	Description	Comment
06:59:22	Start Job	Starting Job
06:59:22	Next Treatment	Treatment Interval 1
07:03:10	Stage 2	Pad
07:26:04	Stage 3	Pad
07:49:39	Stage 4	Pad
07:52:18	Stage 5	Proppant Laden Fluid
07:55:29	Stage 6	Proppant Laden Fluid
08:10:55	Stage 7	Proppant Laden Fluid
08:21:39	Stage 8	Proppant Laden Fluid
08:28:02	Stage 9	Proppant Laden Fluid
08:33:07	Stage 10	Proppant Laden Fluid
08:34:51	Stage 11	Proppant Laden Fluid
08:36:35	Stage 12	Flush
08:47:07	End Job	Ending Job

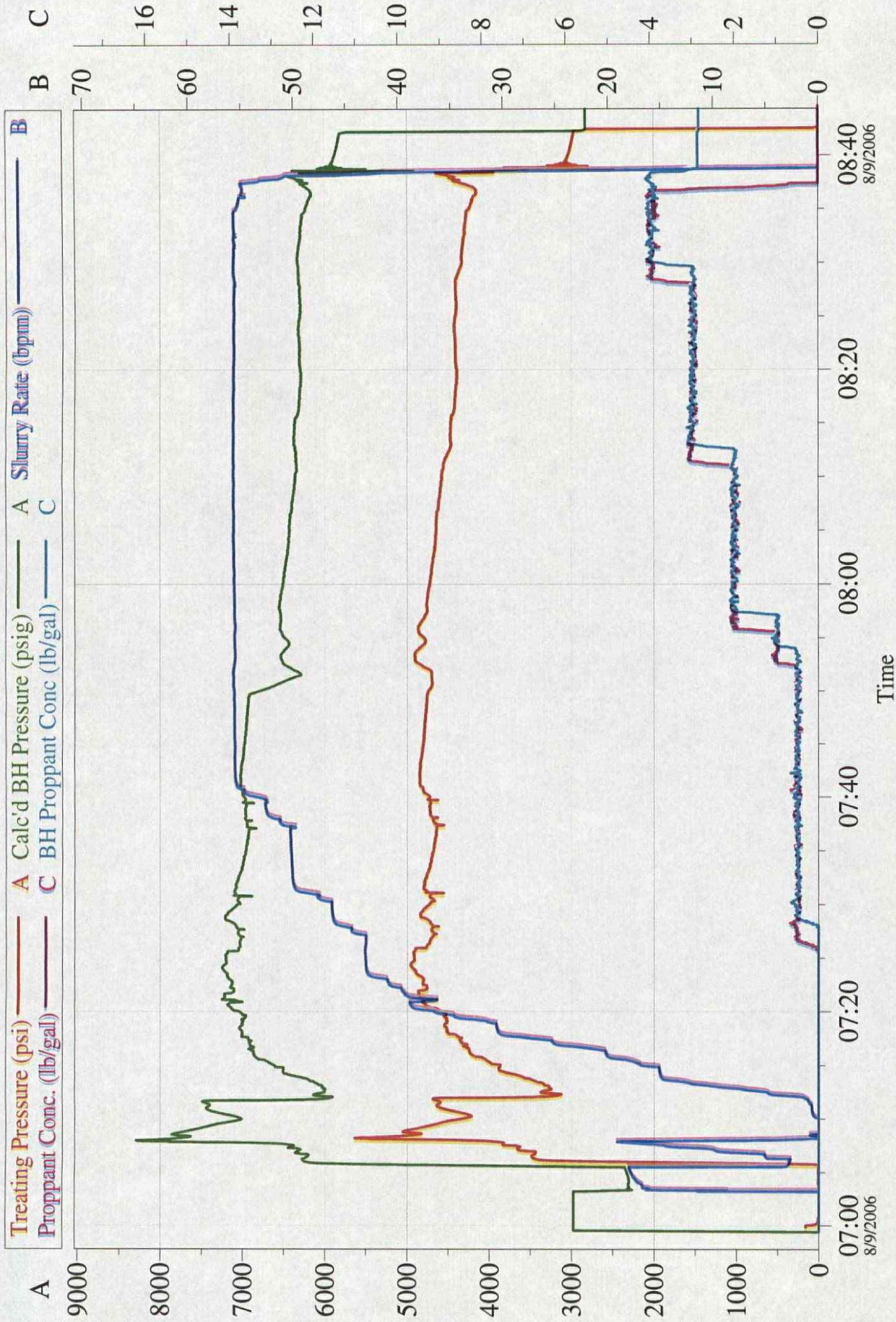
NET PRESSURE PLOT



Time

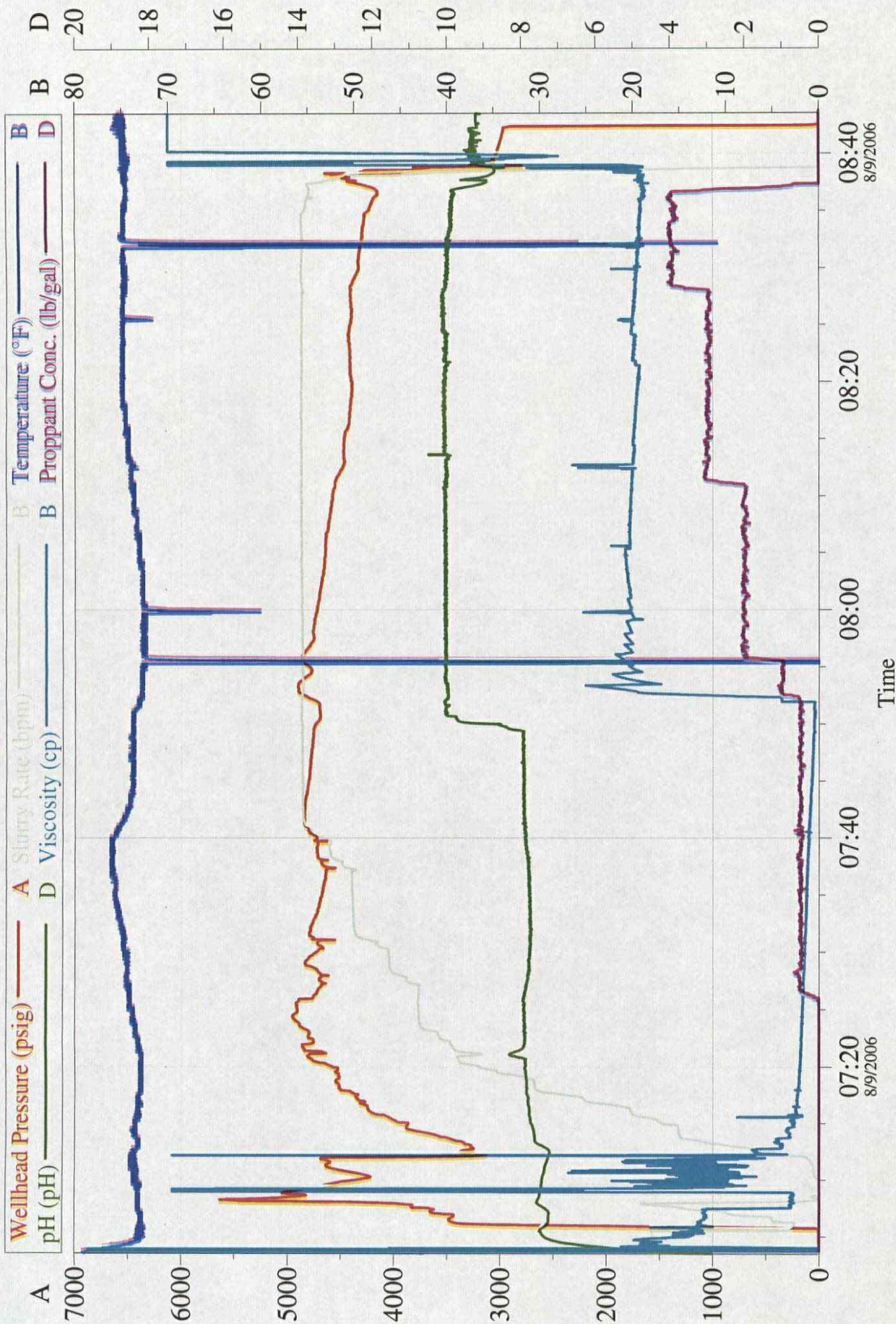
HALLIBURTON INSITE for Stimulation v2.4.1 09-Aug-06 08:48	Customer: PETROLEUM DEVELOPMENT CORP Well Description: Wells Ranch 10C	Job Date: 09-Aug-2006 UWI: 05-123-20853	Sales Order #: 4555590
--	---	--	------------------------

Job Treatment Plot



Customer: PETROLEUM DEVELOPMENT CORP Well Description: Wells Ranch 10C	Job Date: 09-Aug-2006 UWI: 05-123-20853	Sales Order #: 4555590	HALLIBURTON INSITE for Stimulation v2.4.1 09-Aug-06 08:48
---	--	-------------------------------	--

QA/QC Plot



HALLIBURTON INSITE for Stimulation v2.4.1 09-Aug-06 08:48	Customer: PETROLEUM DEVELOPMENT CORP Well Description: Wells Ranch 10C	Job Date: 09-Aug-2006 UWI: 05-123-20853	Sales Order #: 4555590
--	---	--	------------------------

HALLIBURTON**Petroleum Development Corp**

Box 26

Bridgeport, West Virginia 26330

Wells Ranch 10C Niobrara

05-123-20853

SWNE Sec 10 T5N R63W

August 9, 2006

Ticket # 4544630

Operator: Chris Rodriguez

Engineer: Mark Ellingson

Customer: Jesse Silva

Job Log

Pre Job	Total Clean Fluid on Location:		BBLS Clean	180,602	GAL Clean
Pre Job	After Prime-up	Gal to Prime-up	BBLS Clean	179,543	GAL Clean
Pre Job	minus Bottoms	Gal	BBLS Clean	179,543	GAL Clean
Pre Job	Required		BBLS Clean	174,000	GAL Clean
Pre Job	Excess		BBLS Clean	5,543	GAL Clean
Pre Job					
Pre Job	Total Sand	Ottawa 30/50		263,500	#
Pre Job		SB Excel 12/20		12,000	#
Pre Job	Proppant Hauled From			Lucerne Terminal	
Pre Job	Lines Tested To			6,603	Psig
Pre Job	Max Pressure			5,000	Psig
Pre Job	Pressure Kick-out Set Point			5,000	Psig
Pre Job	Backside Pump			No	
Pre Job	Backside Kick-out Set Point			NA	Psig
Pre Job	Wellbore Volume	102.1	BBLS	4287.0	Gal

EVENT LOG

5.065 Begin Pumping Acid @ 6:59 AM
 10.11 Well loaded with 50 bbl of Fluid
 11.15 Formation Break @ 3485 psi & 5.0 bpm
 30.71 Start .5 ppg Sand @ 4756 psi & 43.1 bpm
 33.18 .5 ppg Sand on Bottom @ 4758 psi & 46.2 bpm
 54.59 Start Crosslink Gel @ 4737 psi & 66.7 bpm
 57.18 Start 1 ppg Sand @ 4870 psi & 55.5 bpm
 59.06 1 ppg Sand on Bottom @ 4781 psi & 55.6 bpm
 60.12 Start 2 ppg Sand @ 4861 psi & 55.5 bpm
 62.12 2 ppg Sand on Bottom @ 4754 psi & 55.6 bpm
 75.54 Start 3 ppg Sand @ 4556 psi & 55.7 bpm
 77.59 3 ppg Sand on Bottom @ 4464 psi & 55.7 bpm
 92.82 Start 4 ppg Sand @ 4414 psi & 55.6 bpm
 94.57 4 ppg Sand on Bottom @ 4333 psi & 55.7 bpm
 101.2 Start Flush @ 4160 psi & 55.7 bpm
 103.9 ISDP = 3100 psi & FFG = .917 psi/ft

Other Events	Top Perf	6400
ISIP (psi)	N/A	ISDP (psi) 3100
IFG (psi/ft)	N/A	FFG (psi/ft) 0.917
5 min (psi)	N/A	5 min (psi) N/A
Leakoff (psi)	N/A	Leakoff (psi) N/A
Friction Analysis	Rate (bpm)	NA
	Perfs Open	NA
	NWB (psi)	NA
	Perf (psi)	NA
	WB (WB)	NA

Averages

Pressure	4,654	Pressure
Rate	52.0	Bbl/Min
Visc	19.8	Cp
Average. Temperature	73.8	Deg. F

Misc.

Max Pressure	5,639	Psi
Max Rate	55.7	BPM
Fluid Totals	SilverStim	2342.0
	FR Water	1667.0
Total SLF		3531.1
Load To Recover		4110.6
		98,366
		70,015
		148,305
		172,647

Job Cost: