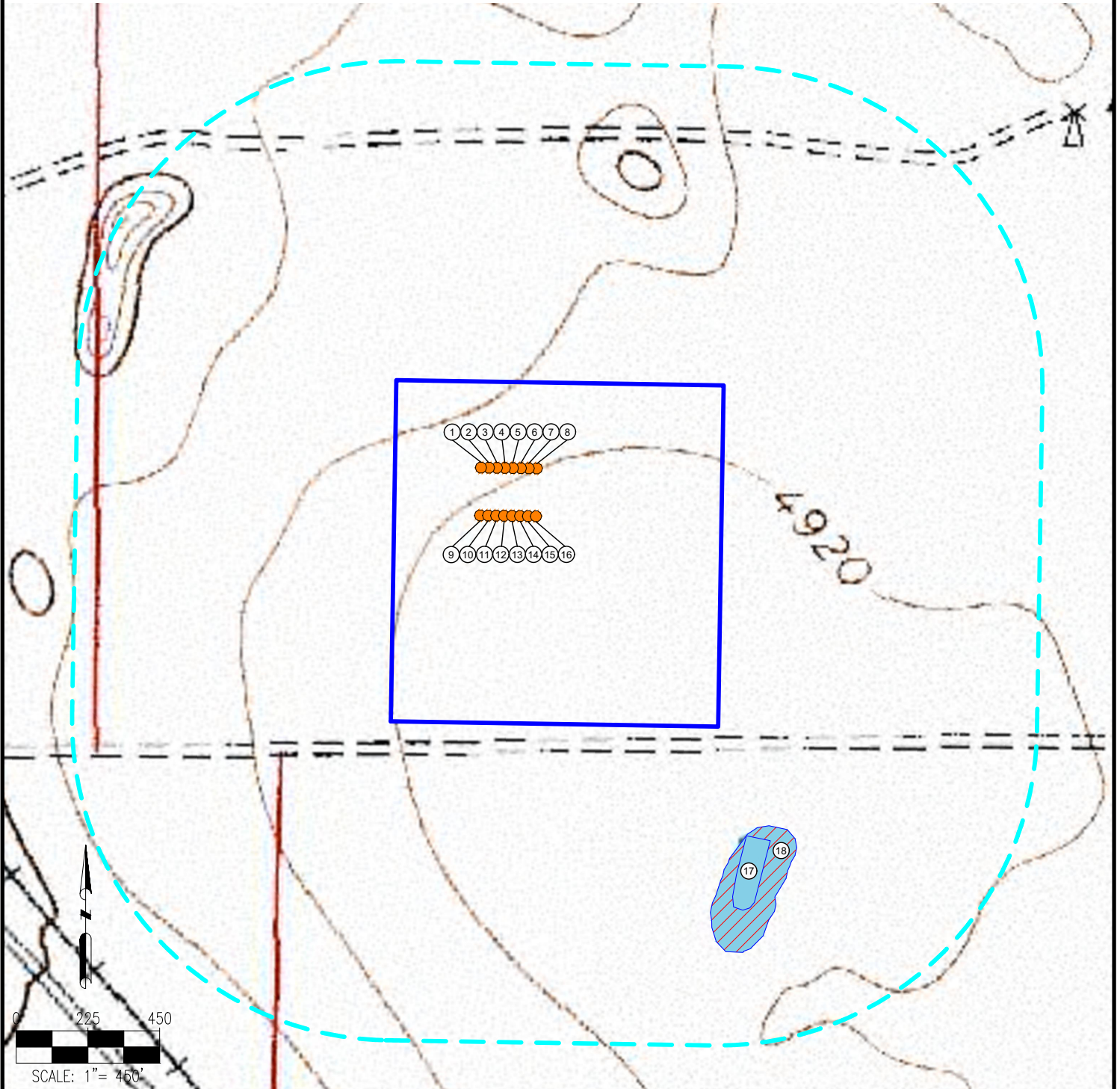


PINTAIL PAD HYDROLOGY MAP



LEGEND:

- = PROPOSED WELL
- = POND
- = DISTURBANCE AREA
- = WETLANDS
- = 1000' RADIUS

DISCLAIMER:
THIS PLOT DOES NOT REPRESENT A MONUMENTED LAND SURVEY AND SHOULD NOT BE RELIED UPON TO DETERMINE BOUNDARY LINES, PROPERTY OWNERSHIP OR OTHER PROPERTY INTERESTS. PARCEL LINES, IF DEPICTED HAVE NOT BEEN FIELD VERIFIED AND MAY BE BASED UPON PUBLICLY AVAILABLE DATA THAT ALSO HAS NOT BEEN INDEPENDENTLY VERIFIED.

DATA SOURCE:
TOPO MAP: USGS
NHD: USGS
PUBLICLY AVAILABLE DATA SOURCES HAVE NOT BEEN INDEPENDENTLY VERIFIED BY ASCENT.



7535 Hilltop Circle
Denver, CO 80221
(303) 928-7128
www.ascentgeomatics.com

FIELD DATE:
08-08-17

DRAWING DATE:
08-22-17

BY:
MJW

CHECKED:
RMC

SITE NAME:
PINTAIL PAD

SURFACE LOCATION:

SW 1/4 SW 1/4 SEC. 35, T9N, R60W, 6TH P.M.
WELD COUNTY, COLORADO

PREPARED FOR:

