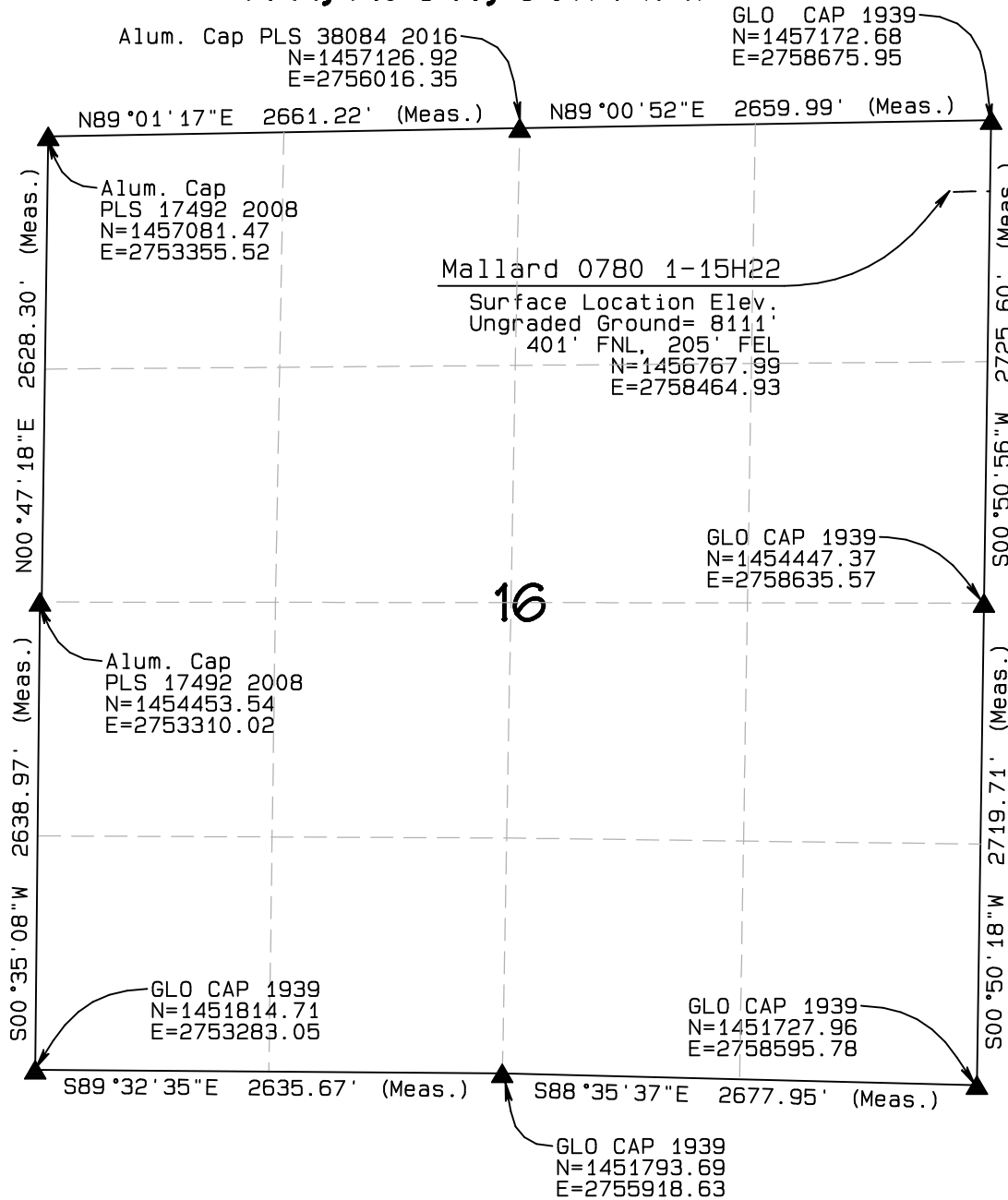


T7N, R80W, 6th P.M.

SandRidge Exploration & Production, LLC



Surface Location, Mallard 0780 1-15H22 located as shown in the NE1/4NE1/4 of Section 16, T7N, R80W, 6th P.M., Jackson County, Colorado.

BASIS OF BEARINGS:

US STATE PLANE 1983  
CO NORTH 0501 GRID

BASIS OF ELEVATION

SPOT ELEVATION AT THE NE CORNER OF SECTION 16, T7N, R80W, 6TH PM, TAKEN FROM THE MAC FARLANE RESERVOIR QUADRANGLE, USGS 7.5 MIN QUAD (TOPOGRAPHIC MAP) WITH SAID ELEVATION MARKED AS BEING 8120 FEET.

GRAPHIC SCALE 1"=1000'



THIS IS TO CERTIFY THAT THE ABOVE PLAT WAS PREPARED FROM FIELD NOTES OF ACTUAL SURVEYS MADE BY ME OR UNDER MY SUPERVISION AND THAT THE SAME ARE TRUE AND CORRECT TO THE BEST OF MY KNOWLEDGE AND BELIEF.

RANDALL R. MILLER  
COLORADO PLS NO. 38084

LEGEND

FOUND CORNER ▲  
PROPOSED WELL ●  
PROPOSED BHL/LPL ○

NAD 83 (TOP OF FORMATION)	NAD 83 (SURFACE LOCATION)	
LATITUDE=40.58392 °N LONGITUDE=106.36715 °W	LATITUDE=40.58398 °N LONGITUDE=106.36961 °W	PDOP = 2.096
NAD 83 (TARGET BOTTOM HOLE)	NAD 83 (LANDING POINT LOCATION)	
LATITUDE=40.55589 °N LONGITUDE=106.36547 °W	LATITUDE=40.58267 °N LONGITUDE=106.36531 °W	

NORTH PARK ENGINEERING & CONSULTING, INC.

P.O. BOX 395  
WALDEN, CO 80480  
(970) 723-3725

DATE OF FIELD WORK: APR 19, 2017 DRAWING COMPLETION: JULY 20, 2017  
SURVEYED BY: LRK DRAWN BY: TKH CHECKED BY: ARM

T7N, R80W, 6th P.M.

**SandRidge Exploration & Production, LLC**

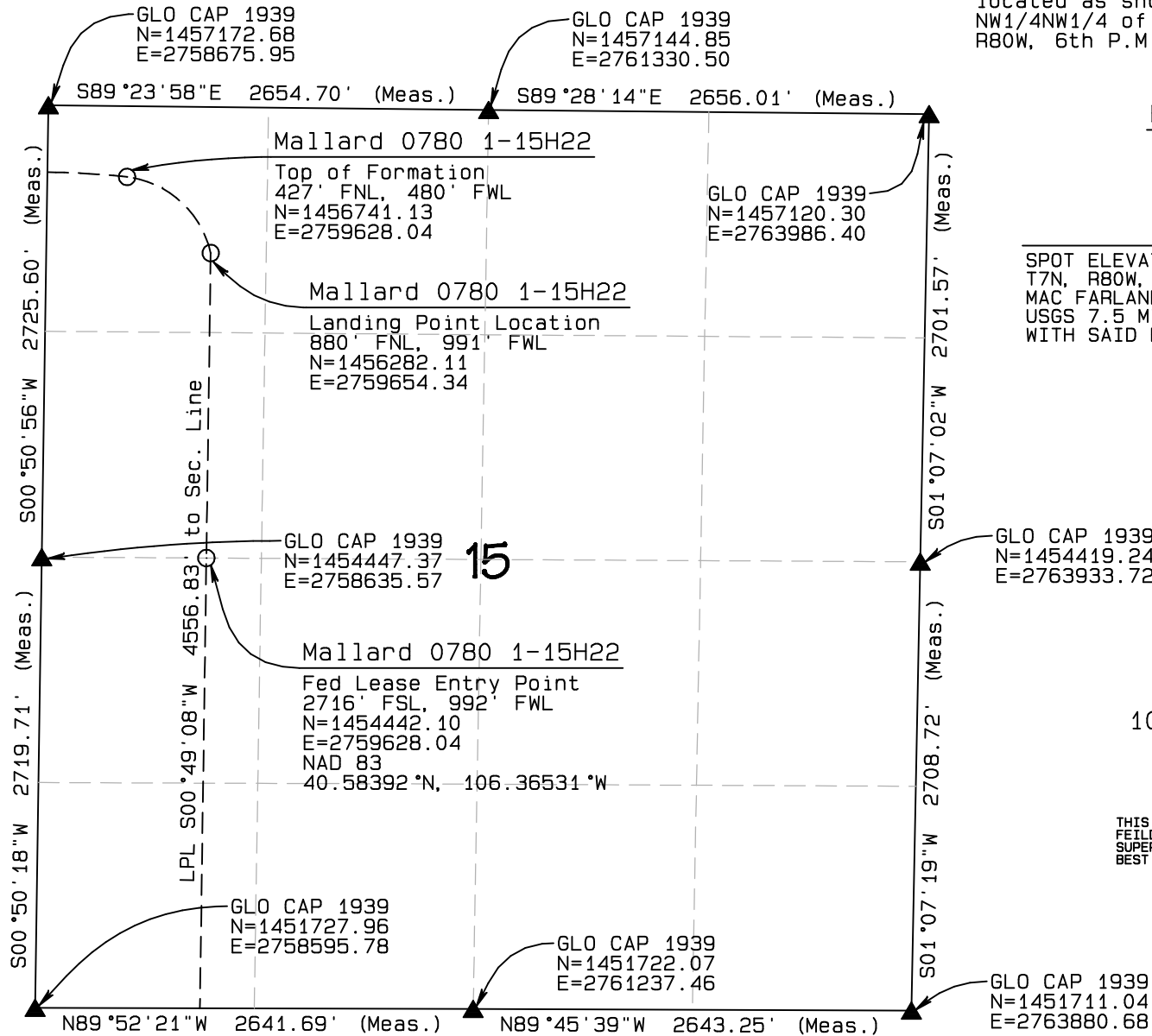
Landing Point Location, Mallard 0780 1-15H22  
located as shown in the  
NW1/4NW1/4 of Section 15, T7N,  
R80W, 6th P.M., Jackson County, Colorado.

BASIS OF BEARINGS:

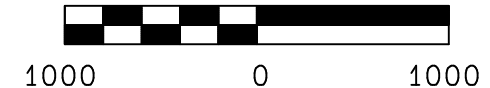
US STATE PLANE 1983  
CO NORTH 0501 GRID

BASIS OF ELEVATION

SPOT ELEVATION AT THE NE CORNER OF SECTION 16,  
T7N, R80W, 6TH PM, TAKEN FROM THE  
MAC FARLANE RESERVOIR QUADRANGLE,  
USGS 7.5 MIN QUAD (TOPOGRAPHIC MAP)  
WITH SAID ELEVATION MARKED AS BEING 8120 FEET.



GRAPHIC SCALE 1"=1000'



THIS IS TO CERTIFY THAT THE ABOVE PLAT WAS PREPARED FROM  
FIELD NOTES OF ACTUAL SURVEYS MADE BY ME OR UNDER MY  
SUPERVISION AND THAT THE SAME ARE TRUE AND CORRECT TO THE  
BEST OF MY KNOWLEDGE AND BELIEF.

RANDALL R. MILLER  
COLORADO PLS NO. 38084

LEGEND

FOUND CORNER ▲  
PROPOSED WELL ●  
PROPOSED BHL/LPL ○

NAD 83 (TOP OF FORMATION)	NAD 83 (SURFACE LOCATION)	
LATITUDE=40.58392°N LONGITUDE=106.36715°W	LATITUDE=40.58398°N LONGITUDE=106.36961°W	PDOP = 2.096
NAD 83 (TARGET BOTTOM HOLE)	NAD 83 (LANDING POINT LOCATION)	
LATITUDE=40.55589°N LONGITUDE=106.36547°W	LATITUDE=40.58267°N LONGITUDE=106.36531°W	

**NORTH PARK ENGINEERING & CONSULTING, INC.**

P.O. BOX 395  
WALDEN, CO 80480  
(970) 723-3725

DATE OF FIELD WORK: APR 19, 2017 DRAWING COMPLETION: JULY 20, 2017  
SURVEYED BY: LRK DRAWN BY: TKH CHECKED BY: ARM

T7N, R80W, 6th P.M.

# SandRidge Exploration & Production, LLC

Bottom Hole Location, Mallard 0780 1-15H22 located as shown in the SW1/4SW1/4 of Section 22, T7N, R80W, 6th P.M., Jackson County, Colorado.

## BASIS OF BEARINGS:

US STATE PLANE 1983  
CO NORTH 0501 GRID

## BASIS OF ELEVATION

SPOT ELEVATION AT THE NE CORNER OF SECTION 16, T7N, R80W, 6TH PM, TAKEN FROM THE MAC FARLANE RESERVOIR QUADRANGLE, USGS 7.5 MIN QUAD (TOPOGRAPHIC MAP) WITH SAID ELEVATION MARKED AS BEING 8120 FEET.



GRAPHIC SCALE 1"=1000'



THIS IS TO CERTIFY THAT THE ABOVE PLAT WAS PREPARED FROM FIELD NOTES OF ACTUAL SURVEYS MADE BY ME OR UNDER MY SUPERVISION AND THAT THE SAME ARE TRUE AND CORRECT TO THE BEST OF MY KNOWLEDGE AND BELIEF.

RANDALL R. MILLER  
COLORADO PLS NO. 38084

## LEGEND

FOUND CORNER ▲  
PROPOSED WELL ●  
PROPOSED BHL/LPL ○

NAD 83 (TOP OF FORMATION)	NAD 83 (SURFACE LOCATION)
LATITUDE=40.58392°N LONGITUDE=106.36715°W	LATITUDE=40.58398°N LONGITUDE=106.36961°W PDOP = 2.096
NAD 83 (TARGET BOTTOM HOLE)	NAD 83 (LANDING POINT LOCATION)
LATITUDE=40.55589°N LONGITUDE=106.36547°W	LATITUDE=40.58267°N LONGITUDE=106.36531°W

NORTH PARK ENGINEERING & CONSULTING, INC.

P.O. BOX 395  
WALDEN, CO 80480  
(970) 723-3725

DATE OF FIELD WORK: APR 19, 2017 DRAWING COMPLETION: JULY 20, 2017  
SURVEYED BY: LRK DRAWN BY: TKH CHECKED BY: ARM

