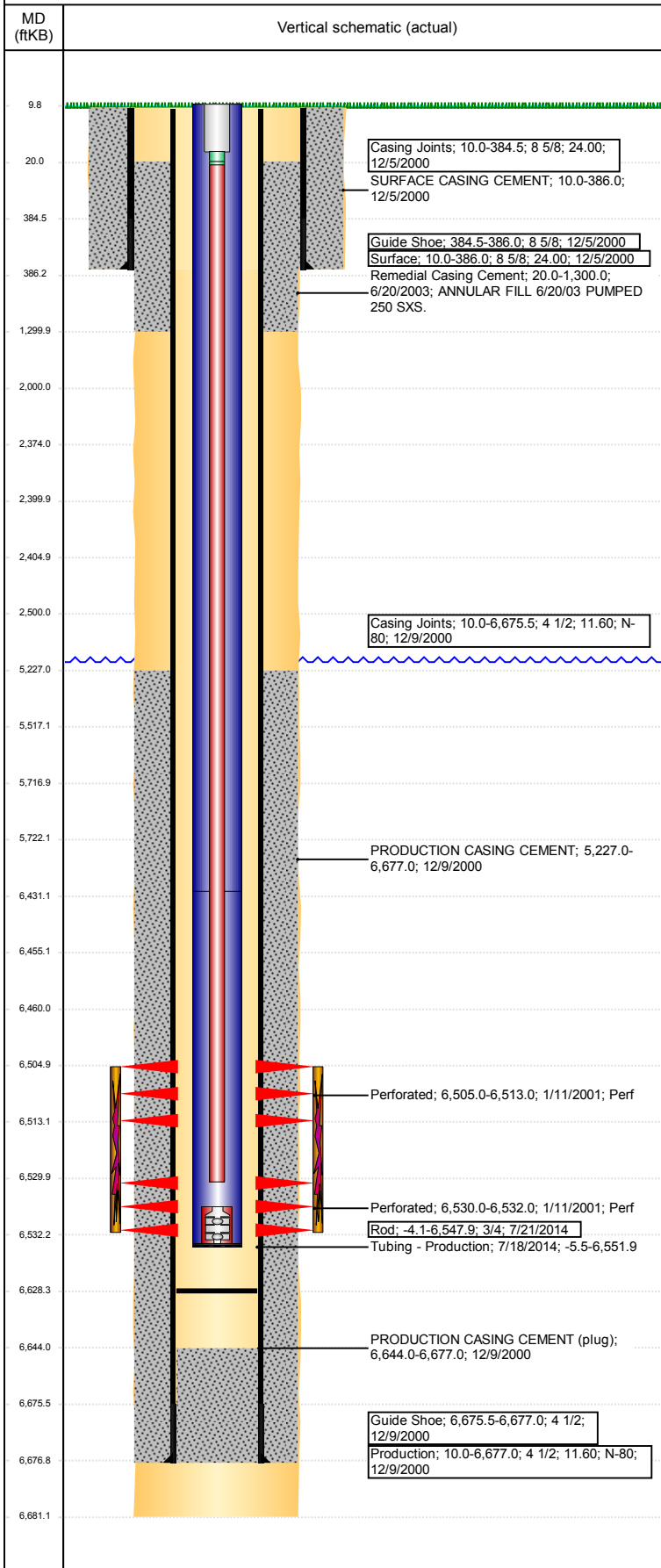


# Wellbore Schematic Input Report

**Well Name: LILLI FIELD UNIT 03-07**

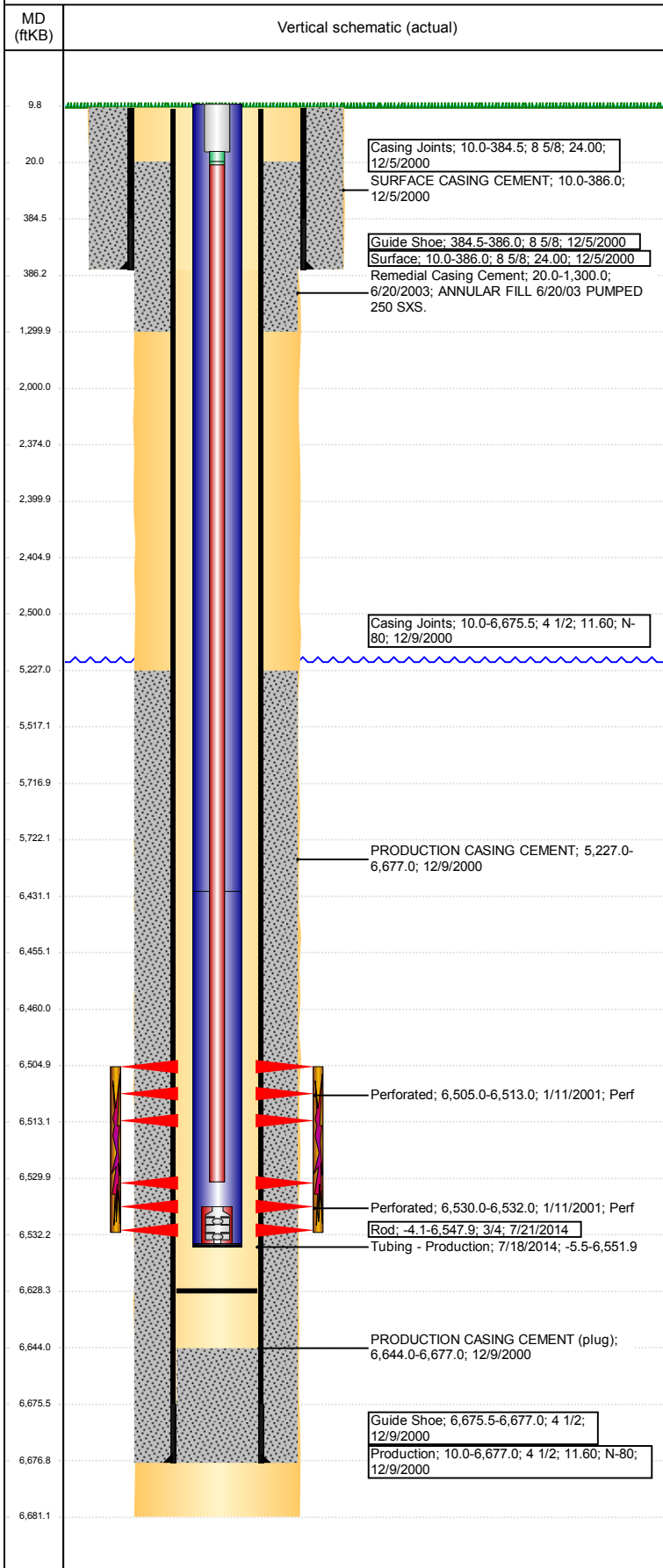
VERTICAL - ORIGINAL HOLE, 9/13/2017 12:10:49 PM



Well Header								
API 05-123-20160		Business Unit DJ BASIN		District 25		Well Config VERTICAL		
Original KB Elevation (ft) 4,819		KB - GL / MSL (ftKB) 10.00		Spud Date 12/4/2000		P & A Date		
Comment								
Directions To Well HIWAY 14 & WCR 129, NORTH 5.2 MILES, WEST 3.3 MILES AND SOUTH 0.1 MILE INTO.								
Congressional Location								
Quarter 3 NE		Quarter 4 NW	Section 7	Township 8	Twnshp N/S Dir N	Range 58		
						Range E/W Dir W		
Bottom Hole Location								
North-South Distance (ft)		From N or S Line		East-West Distance (ft)		From E or W Line		
Plug Back Total Depths								
Date	Depth (ftKB)	Method			Com			
12/9/2000	6,644.0	CASING TALLY						
10/16/2013	6,628.1	TAG			TBG TALLY MEASUREMENT.			
Wellbore Sections								
Section Des		Size (in)		Act Top, MD (ftKB)		Act Btm, MD (ftKB)		
SURFACE		12 1/4		10		386		
PRODUCTION		7 7/8		386		6,681		
Zone Statuses								
Zone Name	Status Date	Status	Fluid Type	Job	Prod Method			
D SAND	1/25/2001	PR	Oil	DRILLING/CO...				
Casing Strings								
Surface, 386.0ftKB								
Casing Description Surface		Run Date 12/5/2000	OD (in) 8 5/8	Wt/Len (l...) 24.00	Grade N-80	Top, MD (ft...) 10.0	MD (ftKB) 386.0	
Production, 6,677.0ftKB								
Casing Description Production		Run Date 12/9/2000	OD (in) 4 1/2	Wt/Len (l...) 11.60	Grade N-80	Top, MD (ft...) 10.0	MD (ftKB) 6,677.0	
Cement								
Description SURFACE CASING CEMENT				Top Depth (ftKB) 10.0		Bottom Depth (ftKB) 386.0		
Description PRODUCTION CASING CEMENT				Top Depth (ftKB) 5,227.0		Bottom Depth (ftKB) 6,677.0		
Description Remedial Casing Cement				Top Depth (ftKB) 20.0		Bottom Depth (ftKB) 1,300.0		
Description PA Plug				Top Depth (ftKB) 6,431.0		Bottom Depth (ftKB) 6,455.0		
Description PA Plug				Top Depth (ftKB) 5,517.0		Bottom Depth (ftKB) 5,717.0		
Description PA Plug				Top Depth (ftKB) 2,000.0		Bottom Depth (ftKB) 2,500.0		
Description PA Plug				Top Depth (ftKB) 9.8		Bottom Depth (ftKB) 1,300.0		
Description PA Plug				Top Depth (ftKB) 2,405.0		Bottom Depth (ftKB) 2,500.0		
Description PA Plug				Top Depth (ftKB) 2,374.0		Bottom Depth (ftKB) 2,400.0		
Description PA Plug				Top Depth (ftKB) 9.8		Bottom Depth (ftKB) 20.0		
Tubing Strings								
Tubing Description Tubing - Production		Run Date 9/25/2008	String... 2 3/8	ID (in) 2.00	Wt (lb/ft) 4.70	Grade J-55	Len (ft) 6,605.00	Set De...
Tubing Description Tubing - Production		Run Date 10/17/2013	String... 2 3/8	ID (in) 2.00	Wt (lb/ft) 4.70	Grade J-55	Len (ft) 6,613.05	Set De...
Tubing Description Tubing - Production		Run Date 7/18/2014	String... 2 3/8	ID (in) 2.00	Wt (lb/ft) 4.70	Grade J-55	Len (ft) 6,557.46	Set De...
Other In Hole								
Run Date		Des			OD (in)	Top (ftKB)	Btm (ftKB)	
7/17/2017		Cast Iron Bridge Plug			4	5,717.0	5,722.0	
7/17/2017		Cement Retainer			4	2,400.0	2,405.0	
7/17/2017		Cast Iron Bridge Plug			4	6,455.0	6,460.0	

**Well Name: LILLI FIELD UNIT 03-07**

VERTICAL - ORIGINAL HOLE, 9/13/2017 12:10:50 PM



Logs			
Date	Type	Top, MD (ftKB)	Btm, MD (ftKB)
12/8/2000	COMPENSATED DENSITY	5,600.0	6,681.0
12/8/2000	INDUCTION	386.0	6,681.0
Perforation Data			
Linked Zone	Bnch/St g	Sum of Entered Shot Total	Date
		0	7/17/2017
D SAND, ORIGINAL HOLE		32	1/11/2001
D SAND, ORIGINAL HOLE		8	1/11/2001
<b>Total (Sum)</b>		<b>40</b>	
Stimulation Intervals			
Start Date		Primary Job Type	
1/15/2001		DRILLING/COMPLETION - ORIGINAL	
Technical Result		Tech Result Details	Tech Result Note
Comment			