

# **EXTRACTION OIL & GAS**

**Weld County**

**Sec 3-T4N-R68W**

**JESSER 3E-10-14C**

**ORIGINAL WELLBORE**

**Plan: PROPOSAL 1**

## **Standard Planning Report**

**31 August, 2017**



Project: Weld County  
Site: Sec 3-T4N-R68W  
Well: JESSER 3E-10-14C  
Wellbore: ORIGINAL WELLBORE  
Design: PROPOSAL 1



Azimuths to True North  
Magnetic North: 8.34°  
Magnetic Field  
Strength: 52349.7nT  
Dip Angle: 66.77°  
Date: 5/1/2017  
Model: IGRF2015

#### WELL DETAILS: JESSER 3E-10-14C

+N/-S	+E/-W	Northing	Easting	5110.00	Latitude	Longitude	Slot
0.00	0.00	1367722.23	3140211.81	40° 20' 30.145 N	104° 59' 49.182 W		

#### SECTION DETAILS

Sec	MD	Inc	Azi	TVD	+N/-S	+E/-W	Dleg	TFace	VSect	Target
1	0.00	0.00	0.00	0.00	0.00	0.00	0.00	0.00	0.00	
2	600.00	0.00	0.00	600.00	0.00	0.00	0.00	0.00	0.00	
3	1281.45	13.63	209.31	1275.04	-70.34	-39.49	2.00	209.31	-18.05	
4	6780.52	13.63	209.31	6619.27	-1200.20	-673.87	0.00	0.00	-307.98	
5	7748.12	90.00	89.34	7246.00	-1325.28	-103.42	10.00	-119.27	274.59	JESSE
6	12186.07	90.00	89.34	7246.00	-1274.27	4334.23	0.00	0.00	4517.66	JESSE

#### ANNOTATIONS

MD	Inc	Azi	TVD	+N/-S	+E/-W	VSect	Departure	Annotation
600.00	0.00	0.00	600.00	0.00	0.00	0.00	0.00	BUILD 2°/100'
1281.45	13.63	209.31	1275.04	-70.34	-39.49	-18.05	80.67	HOLD 13.63° INC
6780.52	13.63	209.31	6619.27	-1200.20	-673.87	-307.98	1376.43	KOP, BUILD 10°/100'
7748.12	90.00	89.34	7246.00	-1325.28	-103.42	274.59	1994.71	LP @ 90° INC, 89.34° AZM HOLD
12186.07	90.00	89.34	7246.00	-1274.27	4334.23	4517.66	6432.65	TD at 12186.07' MD

#### DESIGN TARGET DETAILS

Name	TVD	+N/-S	+E/-W	Northing	Easting	Latitude	Longitude	Shape
JESSER 3E-10-14C LP	7246.00	-1325.28	-103.42	1366396.38	3140115.91	40° 20' 17.048 N	104° 59' 50.518 W	Point
- plan hits target center								
JESSER 3E-10-14C PBHL	7246.00	-1274.27	4334.23	1366472.57	3144553.19	40° 20' 17.549 N	104° 58' 53.209 W	Point
- plan hits target center								

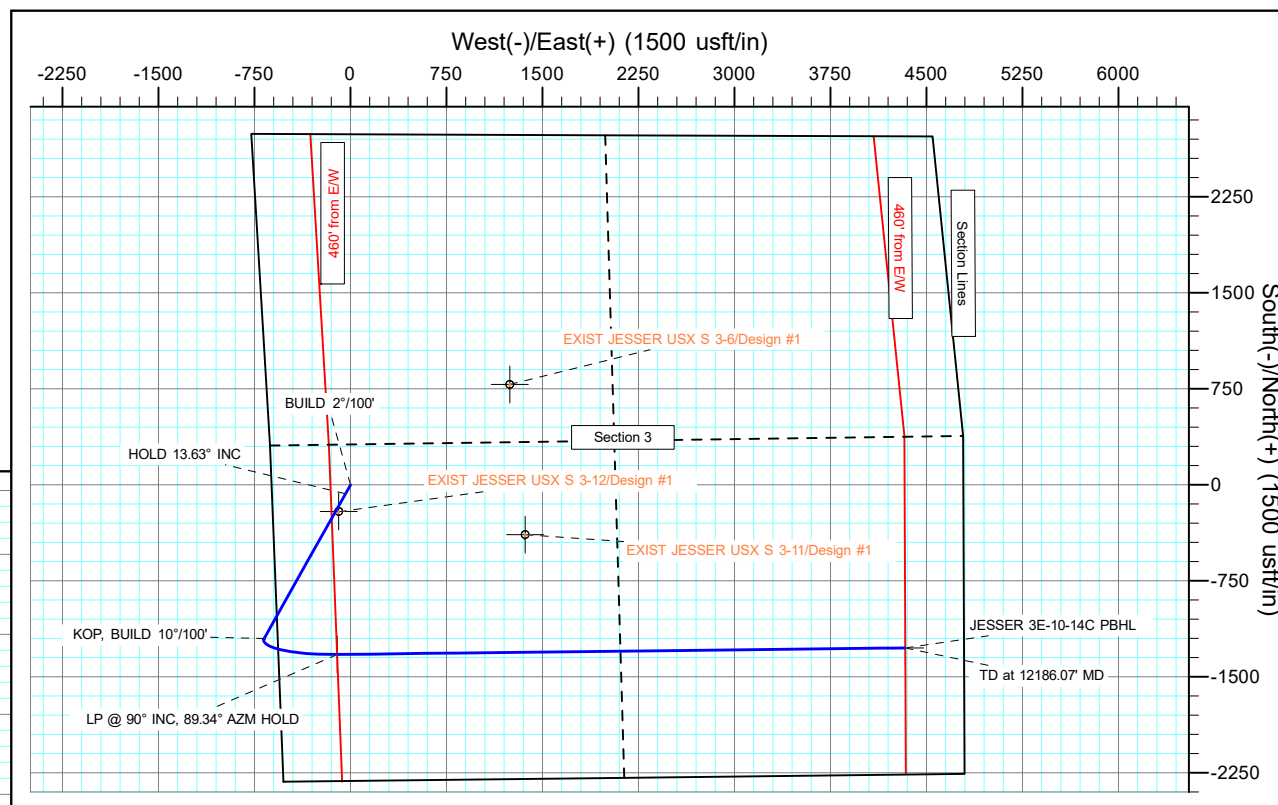
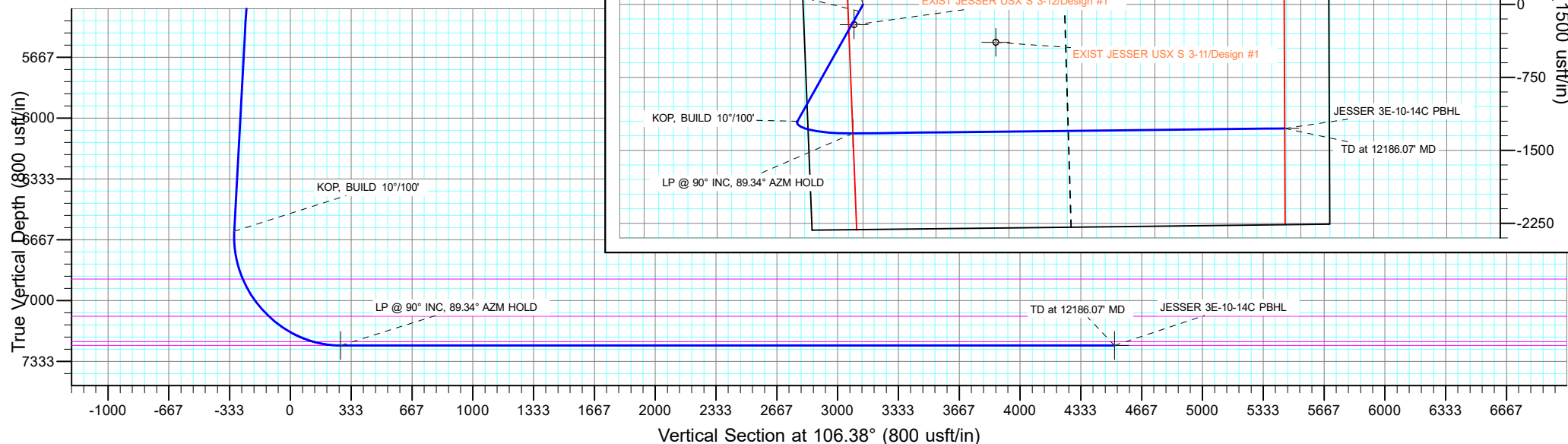
#### FORMATION TOP DETAILS

TVDPath	MDPath	Formation
3489.00	3559.56	PARKMAN
4026.00	4112.11	SUSSEX
4520.00	4620.43	SHANNON
6882.00	7053.51	NIOBRARA A
7086.00	7304.27	NIOBRARA C
7225.00	7590.82	FORT HAYES
7246.00	7748.08	CODELL

#### PROJECT DETAILS: Weld County

Geodetic System: US State Plane 1983  
Datum: North American Datum 1983  
Ellipsoid: GRS 1980  
Zone: Colorado Northern Zone  
System Datum: Mean Sea Level

SHL:  
2314' FSL, 616' FWL  
Sec 3-T4N-R68W  
LP:  
990' FSL, 460' FWL  
Sec 3-T4N-R68W  
BHL:  
990' FSL, 460' FEL  
Sec 3-T4N-R68W



## Planning Report

<b>Database:</b>	EDT_32Bit_ODBC	<b>Local Co-ordinate Reference:</b>	Well JESSER 3E-10-14C
<b>Company:</b>	EXTRACTION OIL & GAS	<b>TVD Reference:</b>	KB 25' @ 5135.00usft
<b>Project:</b>	Weld County	<b>MD Reference:</b>	KB 25' @ 5135.00usft
<b>Site:</b>	Sec 3-T4N-R68W	<b>North Reference:</b>	True
<b>Well:</b>	JESSER 3E-10-14C	<b>Survey Calculation Method:</b>	Minimum Curvature
<b>Wellbore:</b>	ORIGINAL WELLBORE		
<b>Design:</b>	PROPOSAL 1		

<b>Project</b>	Weld County		
<b>Map System:</b>	US State Plane 1983	<b>System Datum:</b>	Mean Sea Level
<b>Geo Datum:</b>	North American Datum 1983		
<b>Map Zone:</b>	Colorado Northern Zone		

Site		Sec 3-T4N-R68W			
Site Position:		Northing:	1,365,399.13 usft	Latitude:	40° 20' 7.217 N
From:	Lat/Long	Easting:	3,139,700.88 usft	Longitude:	104° 59' 55.950 W
Position Uncertainty:	0.00 usft	Slot Radius:	13.200 in	Grid Convergence:	0.32 °

Well	JESSER 3E-10-14C					
Well Position	+N/-S	2,320.17 usft	Northing:	1,367,722.23 usft	Latitude:	40° 20' 30.145 N
	+E/-W	524.05 usft	Easting:	3,140,211.81 usft	Longitude:	104° 59' 49.182 W
Position Uncertainty		0.00 usft	Wellhead Elevation:		Ground Level:	5,110.00 usft

<b>Wellbore</b>	ORIGINAL WELLBORE				
<b>Magnetics</b>	<b>Model Name</b>	<b>Sample Date</b>	<b>Declination (°)</b>	<b>Dip Angle (°)</b>	<b>Field Strength (nT)</b>
	IGRF2015	5/1/2017	8.34	66.77	52,349.71440565

<b>Design</b>	PROPOSAL 1			
<b>Audit Notes:</b>				
<b>Version:</b>	<b>Phase:</b>	PROTOTYPE	<b>Tie On Depth:</b>	0.00
<b>Vertical Section:</b>	<b>Depth From (TVD) (usft)</b>	<b>+N/-S (usft)</b>	<b>+E/-W (usft)</b>	<b>Direction (°)</b>
	0.00	0.00	0.00	106.38

<b>Plan Survey Tool Program</b>	<b>Date</b>	8/31/2017		
<b>Depth From (usft)</b>	<b>Depth To (usft)</b>	<b>Survey (Wellbore)</b>	<b>Tool Name</b>	<b>Remarks</b>
1	0.00	12,186.07	PROPOSAL 1 (ORIGINAL WELL	MWD OWSG
			OWSG MWD - Standard	

<b>Plan Sections</b>										
<b>Measured Depth (usft)</b>	<b>Inclination (°)</b>	<b>Azimuth (°)</b>	<b>Vertical Depth (usft)</b>	<b>+N/-S (usft)</b>	<b>+E/-W (usft)</b>	<b>Dogleg Rate (°/100ft)</b>	<b>Build Rate (°/100ft)</b>	<b>Turn Rate (°/100ft)</b>	<b>TFO (°)</b>	<b>Target</b>
0.00	0.00	0.00	0.00	0.00	0.00	0.00	0.00	0.00	0.00	
600.00	0.00	0.00	600.00	0.00	0.00	0.00	0.00	0.00	0.00	
1,281.45	13.63	209.31	1,275.04	-70.34	-39.49	2.00	2.00	0.00	209.31	
6,780.52	13.63	209.31	6,619.27	-1,200.20	-673.87	0.00	0.00	0.00	0.00	
7,748.13	90.00	89.34	7,246.00	-1,325.28	-103.42	10.00	7.89	-12.40	-119.27	JESSER 3E-10-14C L
12,186.07	90.00	89.34	7,246.00	-1,274.27	4,334.23	0.00	0.00	0.00	0.00	JESSER 3E-10-14C F

# Planning Report

<b>Database:</b>	EDT_32Bit_ODBC	<b>Local Co-ordinate Reference:</b>	Well JESSER 3E-10-14C
<b>Company:</b>	EXTRACTION OIL & GAS	<b>TVD Reference:</b>	KB 25' @ 5135.00usft
<b>Project:</b>	Weld County	<b>MD Reference:</b>	KB 25' @ 5135.00usft
<b>Site:</b>	Sec 3-T4N-R68W	<b>North Reference:</b>	True
<b>Well:</b>	JESSER 3E-10-14C	<b>Survey Calculation Method:</b>	Minimum Curvature
<b>Wellbore:</b>	ORIGINAL WELLBORE		
<b>Design:</b>	PROPOSAL 1		

Planned Survey									
Measured Depth (usft)	Inclination (°)	Azimuth (°)	Vertical Depth (usft)	+N/-S (usft)	+E/-W (usft)	Vertical Section (usft)	Dogleg Rate (°/100ft)	Build Rate (°/100ft)	Turn Rate (°/100ft)
0.00	0.00	0.00	0.00	0.00	0.00	0.00	0.00	0.00	0.00
100.00	0.00	0.00	100.00	0.00	0.00	0.00	0.00	0.00	0.00
200.00	0.00	0.00	200.00	0.00	0.00	0.00	0.00	0.00	0.00
300.00	0.00	0.00	300.00	0.00	0.00	0.00	0.00	0.00	0.00
400.00	0.00	0.00	400.00	0.00	0.00	0.00	0.00	0.00	0.00
500.00	0.00	0.00	500.00	0.00	0.00	0.00	0.00	0.00	0.00
600.00	0.00	0.00	600.00	0.00	0.00	0.00	0.00	0.00	0.00
<b>BUILD 2°/100'</b>									
700.00	2.00	209.31	699.98	-1.52	-0.85	-0.39	2.00	2.00	0.00
800.00	4.00	209.31	799.84	-6.08	-3.42	-1.56	2.00	2.00	0.00
900.00	6.00	209.31	899.45	-13.68	-7.68	-3.51	2.00	2.00	0.00
1,000.00	8.00	209.31	998.70	-24.31	-13.65	-6.24	2.00	2.00	0.00
1,100.00	10.00	209.31	1,097.47	-37.95	-21.31	-9.74	2.00	2.00	0.00
1,200.00	12.00	209.31	1,195.62	-54.59	-30.65	-14.01	2.00	2.00	0.00
1,281.45	13.63	209.31	1,275.04	-70.34	-39.49	-18.05	2.00	2.00	0.00
<b>HOLD 13.63° INC</b>									
1,300.00	13.63	209.31	1,293.07	-74.15	-41.63	-19.03	0.00	0.00	0.00
1,400.00	13.63	209.31	1,390.25	-94.70	-53.17	-24.30	0.00	0.00	0.00
1,500.00	13.63	209.31	1,487.44	-115.24	-64.70	-29.57	0.00	0.00	0.00
1,600.00	13.63	209.31	1,584.62	-135.79	-76.24	-34.84	0.00	0.00	0.00
1,700.00	13.63	209.31	1,681.81	-156.34	-87.78	-40.12	0.00	0.00	0.00
1,800.00	13.63	209.31	1,778.99	-176.88	-99.31	-45.39	0.00	0.00	0.00
1,900.00	13.63	209.31	1,876.17	-197.43	-110.85	-50.66	0.00	0.00	0.00
2,000.00	13.63	209.31	1,973.36	-217.97	-122.39	-55.93	0.00	0.00	0.00
2,100.00	13.63	209.31	2,070.54	-238.52	-133.92	-61.21	0.00	0.00	0.00
2,200.00	13.63	209.31	2,167.73	-259.07	-145.46	-66.48	0.00	0.00	0.00
2,300.00	13.63	209.31	2,264.91	-279.61	-156.99	-71.75	0.00	0.00	0.00
2,400.00	13.63	209.31	2,362.10	-300.16	-168.53	-77.02	0.00	0.00	0.00
2,500.00	13.63	209.31	2,459.28	-320.71	-180.07	-82.30	0.00	0.00	0.00
2,600.00	13.63	209.31	2,556.46	-341.25	-191.60	-87.57	0.00	0.00	0.00
2,700.00	13.63	209.31	2,653.65	-361.80	-203.14	-92.84	0.00	0.00	0.00
2,800.00	13.63	209.31	2,750.83	-382.34	-214.67	-98.11	0.00	0.00	0.00
2,900.00	13.63	209.31	2,848.02	-402.89	-226.21	-103.38	0.00	0.00	0.00
3,000.00	13.63	209.31	2,945.20	-423.44	-237.75	-108.66	0.00	0.00	0.00
3,100.00	13.63	209.31	3,042.39	-443.98	-249.28	-113.93	0.00	0.00	0.00
3,200.00	13.63	209.31	3,139.57	-464.53	-260.82	-119.20	0.00	0.00	0.00
3,300.00	13.63	209.31	3,236.75	-485.08	-272.35	-124.47	0.00	0.00	0.00
3,400.00	13.63	209.31	3,333.94	-505.62	-283.89	-129.75	0.00	0.00	0.00
3,500.00	13.63	209.31	3,431.12	-526.17	-295.43	-135.02	0.00	0.00	0.00
3,559.56	13.63	209.31	3,489.00	-538.41	-302.30	-138.16	0.00	0.00	0.00
<b>PARKMAN</b>									
3,600.00	13.63	209.31	3,528.31	-546.72	-306.96	-140.29	0.00	0.00	0.00
3,700.00	13.63	209.31	3,625.49	-567.26	-318.50	-145.56	0.00	0.00	0.00
3,800.00	13.63	209.31	3,722.67	-587.81	-330.03	-150.83	0.00	0.00	0.00
3,900.00	13.63	209.31	3,819.86	-608.35	-341.57	-156.11	0.00	0.00	0.00
4,000.00	13.63	209.31	3,917.04	-628.90	-353.11	-161.38	0.00	0.00	0.00
4,100.00	13.63	209.31	4,014.23	-649.45	-364.64	-166.65	0.00	0.00	0.00
4,112.11	13.63	209.31	4,026.00	-651.94	-366.04	-167.29	0.00	0.00	0.00
<b>SUSSEX</b>									
4,200.00	13.63	209.31	4,111.41	-669.99	-376.18	-171.92	0.00	0.00	0.00
4,300.00	13.63	209.31	4,208.60	-690.54	-387.72	-177.20	0.00	0.00	0.00
4,400.00	13.63	209.31	4,305.78	-711.09	-399.25	-182.47	0.00	0.00	0.00
4,500.00	13.63	209.31	4,402.96	-731.63	-410.79	-187.74	0.00	0.00	0.00

# Planning Report

<b>Database:</b>	EDT_32Bit_ODBC	<b>Local Co-ordinate Reference:</b>	Well JESSER 3E-10-14C
<b>Company:</b>	EXTRACTION OIL & GAS	<b>TVD Reference:</b>	KB 25' @ 5135.00usft
<b>Project:</b>	Weld County	<b>MD Reference:</b>	KB 25' @ 5135.00usft
<b>Site:</b>	Sec 3-T4N-R68W	<b>North Reference:</b>	True
<b>Well:</b>	JESSER 3E-10-14C	<b>Survey Calculation Method:</b>	Minimum Curvature
<b>Wellbore:</b>	ORIGINAL WELLBORE		
<b>Design:</b>	PROPOSAL 1		

Planned Survey									
Measured Depth (usft)	Inclination (°)	Azimuth (°)	Vertical Depth (usft)	+N/-S (usft)	+E/-W (usft)	Vertical Section (usft)	Dogleg Rate (°/100ft)	Build Rate (°/100ft)	Turn Rate (°/100ft)
4,600.00	13.63	209.31	4,500.15	-752.18	-422.32	-193.01	0.00	0.00	0.00
4,620.43	13.63	209.31	4,520.00	-756.38	-424.68	-194.09	0.00	0.00	0.00
SHANNON									
4,700.00	13.63	209.31	4,597.33	-772.72	-433.86	-198.29	0.00	0.00	0.00
4,800.00	13.63	209.31	4,694.52	-793.27	-445.40	-203.56	0.00	0.00	0.00
4,900.00	13.63	209.31	4,791.70	-813.82	-456.93	-208.83	0.00	0.00	0.00
5,000.00	13.63	209.31	4,888.88	-834.36	-468.47	-214.10	0.00	0.00	0.00
5,100.00	13.63	209.31	4,986.07	-854.91	-480.00	-219.37	0.00	0.00	0.00
5,200.00	13.63	209.31	5,083.25	-875.46	-491.54	-224.65	0.00	0.00	0.00
5,300.00	13.63	209.31	5,180.44	-896.00	-503.08	-229.92	0.00	0.00	0.00
5,400.00	13.63	209.31	5,277.62	-916.55	-514.61	-235.19	0.00	0.00	0.00
5,500.00	13.63	209.31	5,374.81	-937.10	-526.15	-240.46	0.00	0.00	0.00
5,600.00	13.63	209.31	5,471.99	-957.64	-537.68	-245.74	0.00	0.00	0.00
5,700.00	13.63	209.31	5,569.17	-978.19	-549.22	-251.01	0.00	0.00	0.00
5,800.00	13.63	209.31	5,666.36	-998.73	-560.76	-256.28	0.00	0.00	0.00
5,900.00	13.63	209.31	5,763.54	-1,019.28	-572.29	-261.55	0.00	0.00	0.00
6,000.00	13.63	209.31	5,860.73	-1,039.83	-583.83	-266.83	0.00	0.00	0.00
6,100.00	13.63	209.31	5,957.91	-1,060.37	-595.36	-272.10	0.00	0.00	0.00
6,200.00	13.63	209.31	6,055.10	-1,080.92	-606.90	-277.37	0.00	0.00	0.00
6,300.00	13.63	209.31	6,152.28	-1,101.47	-618.44	-282.64	0.00	0.00	0.00
6,400.00	13.63	209.31	6,249.46	-1,122.01	-629.97	-287.91	0.00	0.00	0.00
6,500.00	13.63	209.31	6,346.65	-1,142.56	-641.51	-293.19	0.00	0.00	0.00
6,600.00	13.63	209.31	6,443.83	-1,163.10	-653.05	-298.46	0.00	0.00	0.00
6,700.00	13.63	209.31	6,541.02	-1,183.65	-664.58	-303.73	0.00	0.00	0.00
6,780.52	13.63	209.31	6,619.27	-1,200.20	-673.87	-307.98	0.00	0.00	0.00
KOP, BUILD 10°/100'									
6,800.00	12.79	201.62	6,638.23	-1,204.20	-675.79	-308.69	10.00	-4.32	-39.52
6,850.00	11.86	178.43	6,687.11	-1,214.49	-677.69	-307.61	10.00	-1.85	-46.37
6,900.00	12.93	155.51	6,735.97	-1,224.72	-675.23	-302.36	10.00	2.14	-45.84
6,950.00	15.59	138.18	6,784.45	-1,234.83	-668.42	-292.98	10.00	5.31	-34.66
7,000.00	19.18	126.48	6,832.17	-1,244.73	-657.33	-279.55	10.00	7.19	-23.41
7,050.00	23.29	118.55	6,878.78	-1,254.34	-642.03	-262.16	10.00	8.21	-15.85
7,053.51	23.59	118.09	6,882.00	-1,255.00	-640.80	-260.79	10.00	8.56	-12.99
NIOBRARA A									
7,100.00	27.67	112.95	6,923.91	-1,263.60	-622.65	-240.95	10.00	8.79	-11.06
7,150.00	32.23	108.80	6,967.23	-1,272.43	-599.32	-216.08	10.00	9.11	-8.30
7,200.00	36.89	105.59	7,008.40	-1,280.76	-572.23	-187.73	10.00	9.32	-6.42
7,250.00	41.61	103.02	7,047.11	-1,288.54	-541.58	-156.14	10.00	9.46	-5.15
7,300.00	46.39	100.88	7,083.06	-1,295.70	-507.60	-121.52	10.00	9.55	-4.27
7,304.27	46.80	100.72	7,086.00	-1,296.29	-504.55	-118.43	10.00	9.59	-3.89
NIOBRARA C									
7,350.00	51.20	99.06	7,115.99	-1,302.20	-470.56	-84.15	10.00	9.62	-3.61
7,400.00	56.03	97.48	7,145.64	-1,307.97	-430.74	-44.32	10.00	9.67	-3.18
7,450.00	60.89	96.06	7,171.79	-1,312.97	-388.44	-2.32	10.00	9.70	-2.83
7,500.00	65.75	94.77	7,194.24	-1,317.18	-343.97	41.52	10.00	9.73	-2.58
7,550.00	70.63	93.58	7,212.81	-1,320.54	-297.69	86.88	10.00	9.75	-2.39
7,590.82	74.61	92.65	7,225.00	-1,322.66	-258.80	124.78	10.00	9.77	-2.26
FORT HAYES									
7,600.00	75.51	92.45	7,227.37	-1,323.05	-249.94	133.40	10.00	9.77	-2.20
7,650.00	80.40	91.38	7,237.80	-1,324.68	-201.08	180.73	10.00	9.78	-2.15
7,700.00	85.29	90.33	7,244.02	-1,325.42	-151.49	228.51	10.00	9.78	-2.09
7,748.08	90.00	89.34	7,246.00	-1,325.28	-103.47	274.55	10.00	9.79	-2.06
CODELL									

# Planning Report

<b>Database:</b>	EDT_32Bit_ODBC	<b>Local Co-ordinate Reference:</b>	Well JESSER 3E-10-14C
<b>Company:</b>	EXTRACTION OIL & GAS	<b>TVD Reference:</b>	KB 25' @ 5135.00usft
<b>Project:</b>	Weld County	<b>MD Reference:</b>	KB 25' @ 5135.00usft
<b>Site:</b>	Sec 3-T4N-R68W	<b>North Reference:</b>	True
<b>Well:</b>	JESSER 3E-10-14C	<b>Survey Calculation Method:</b>	Minimum Curvature
<b>Wellbore:</b>	ORIGINAL WELLBORE		
<b>Design:</b>	PROPOSAL 1		

Planned Survey										
Measured Depth (usft)	Inclination (°)	Azimuth (°)	Vertical Depth (usft)	+N/-S (usft)	+E/-W (usft)	Vertical Section (usft)	Dogleg Rate (°/100ft)	Build Rate (°/100ft)	Turn Rate (°/100ft)	
7,748.13	90.00	89.34	7,246.00	-1,325.28	-103.42	274.59	10.00	9.79	-2.06	
LP @ 90° INC, 89.34° AZM HOLD										
7,800.00	90.00	89.34	7,246.00	-1,324.69	-51.55	324.19	0.00	0.00	0.00	
7,900.00	90.00	89.34	7,246.00	-1,323.54	48.44	419.80	0.00	0.00	0.00	
8,000.00	90.00	89.34	7,246.00	-1,322.39	148.44	515.41	0.00	0.00	0.00	
8,100.00	90.00	89.34	7,246.00	-1,321.24	248.43	611.02	0.00	0.00	0.00	
8,200.00	90.00	89.34	7,246.00	-1,320.09	348.42	706.62	0.00	0.00	0.00	
8,300.00	90.00	89.34	7,246.00	-1,318.94	448.42	802.23	0.00	0.00	0.00	
8,400.00	90.00	89.34	7,246.00	-1,317.79	548.41	897.84	0.00	0.00	0.00	
8,500.00	90.00	89.34	7,246.00	-1,316.64	648.40	993.45	0.00	0.00	0.00	
8,600.00	90.00	89.34	7,246.00	-1,315.49	748.40	1,089.06	0.00	0.00	0.00	
8,700.00	90.00	89.34	7,246.00	-1,314.34	848.39	1,184.67	0.00	0.00	0.00	
8,800.00	90.00	89.34	7,246.00	-1,313.19	948.38	1,280.28	0.00	0.00	0.00	
8,900.00	90.00	89.34	7,246.00	-1,312.04	1,048.38	1,375.89	0.00	0.00	0.00	
9,000.00	90.00	89.34	7,246.00	-1,310.89	1,148.37	1,471.50	0.00	0.00	0.00	
9,100.00	90.00	89.34	7,246.00	-1,309.74	1,248.36	1,567.11	0.00	0.00	0.00	
9,200.00	90.00	89.34	7,246.00	-1,308.59	1,348.36	1,662.71	0.00	0.00	0.00	
9,300.00	90.00	89.34	7,246.00	-1,307.44	1,448.35	1,758.32	0.00	0.00	0.00	
9,400.00	90.00	89.34	7,246.00	-1,306.29	1,548.34	1,853.93	0.00	0.00	0.00	
9,500.00	90.00	89.34	7,246.00	-1,305.14	1,648.34	1,949.54	0.00	0.00	0.00	
9,600.00	90.00	89.34	7,246.00	-1,303.99	1,748.33	2,045.15	0.00	0.00	0.00	
9,700.00	90.00	89.34	7,246.00	-1,302.85	1,848.32	2,140.76	0.00	0.00	0.00	
9,800.00	90.00	89.34	7,246.00	-1,301.70	1,948.32	2,236.37	0.00	0.00	0.00	
9,900.00	90.00	89.34	7,246.00	-1,300.55	2,048.31	2,331.98	0.00	0.00	0.00	
10,000.00	90.00	89.34	7,246.00	-1,299.40	2,148.30	2,427.59	0.00	0.00	0.00	
10,100.00	90.00	89.34	7,246.00	-1,298.25	2,248.30	2,523.20	0.00	0.00	0.00	
10,200.00	90.00	89.34	7,246.00	-1,297.10	2,348.29	2,618.80	0.00	0.00	0.00	
10,300.00	90.00	89.34	7,246.00	-1,295.95	2,448.28	2,714.41	0.00	0.00	0.00	
10,400.00	90.00	89.34	7,246.00	-1,294.80	2,548.28	2,810.02	0.00	0.00	0.00	
10,500.00	90.00	89.34	7,246.00	-1,293.65	2,648.27	2,905.63	0.00	0.00	0.00	
10,600.00	90.00	89.34	7,246.00	-1,292.50	2,748.27	3,001.24	0.00	0.00	0.00	
10,700.00	90.00	89.34	7,246.00	-1,291.35	2,848.26	3,096.85	0.00	0.00	0.00	
10,800.00	90.00	89.34	7,246.00	-1,290.20	2,948.25	3,192.46	0.00	0.00	0.00	
10,900.00	90.00	89.34	7,246.00	-1,289.05	3,048.25	3,288.07	0.00	0.00	0.00	
11,000.00	90.00	89.34	7,246.00	-1,287.90	3,148.24	3,383.68	0.00	0.00	0.00	
11,100.00	90.00	89.34	7,246.00	-1,286.75	3,248.23	3,479.29	0.00	0.00	0.00	
11,200.00	90.00	89.34	7,246.00	-1,285.60	3,348.23	3,574.89	0.00	0.00	0.00	
11,300.00	90.00	89.34	7,246.00	-1,284.45	3,448.22	3,670.50	0.00	0.00	0.00	
11,400.00	90.00	89.34	7,246.00	-1,283.30	3,548.21	3,766.11	0.00	0.00	0.00	
11,500.00	90.00	89.34	7,246.00	-1,282.15	3,648.21	3,861.72	0.00	0.00	0.00	
11,600.00	90.00	89.34	7,246.00	-1,281.00	3,748.20	3,957.33	0.00	0.00	0.00	
11,700.00	90.00	89.34	7,246.00	-1,279.85	3,848.19	4,052.94	0.00	0.00	0.00	
11,800.00	90.00	89.34	7,246.00	-1,278.70	3,948.19	4,148.55	0.00	0.00	0.00	
11,900.00	90.00	89.34	7,246.00	-1,277.55	4,048.18	4,244.16	0.00	0.00	0.00	
12,000.00	90.00	89.34	7,246.00	-1,276.41	4,148.17	4,339.77	0.00	0.00	0.00	
12,100.00	90.00	89.34	7,246.00	-1,275.26	4,248.17	4,435.38	0.00	0.00	0.00	
12,186.07	90.00	89.34	7,246.00	-1,274.27	4,334.23	4,517.66	0.00	0.00	0.00	
TD at 12186.07' MD										

## Planning Report

<b>Database:</b>	EDT_32Bit_ODBC	<b>Local Co-ordinate Reference:</b>	Well JESSER 3E-10-14C
<b>Company:</b>	EXTRACTION OIL & GAS	<b>TVD Reference:</b>	KB 25' @ 5135.00usft
<b>Project:</b>	Weld County	<b>MD Reference:</b>	KB 25' @ 5135.00usft
<b>Site:</b>	Sec 3-T4N-R68W	<b>North Reference:</b>	True
<b>Well:</b>	JESSER 3E-10-14C	<b>Survey Calculation Method:</b>	Minimum Curvature
<b>Wellbore:</b>	ORIGINAL WELLBORE		
<b>Design:</b>	PROPOSAL 1		

Design Targets									
Target Name									
- hit/miss target	Dip Angle	Dip Dir.	TVD	+N/-S	+E/-W	Northing	Easting	Latitude	Longitude
- Shape	(°)	(°)	(usft)	(usft)	(usft)	(usft)	(usft)		
JESSER 3E-10-14C PBI	0.00	0.00	7,246.00	-1,274.27	4,334.23	1,366,472.57	3,144,553.19	40° 20' 17.549 N	104° 58' 53.209 W
- plan hits target center									
- Point									
JESSER 3E-10-14C LP	0.00	0.00	7,246.00	-1,325.28	-103.42	1,366,396.38	3,140,115.91	40° 20' 17.048 N	104° 59' 50.518 W
- plan hits target center									
- Point									

Formations						
Measured Depth	Vertical Depth	Name	Lithology	Dip	Dip Direction	
(usft)	(usft)			(°)	(°)	
3,559.56	3,489.00	PARKMAN				
4,112.11	4,026.00	SUSSEX				
4,620.43	4,520.00	SHANNON				
7,053.51	6,882.00	NIOBRARA A				
7,304.27	7,086.00	NIOBRARA C				
7,590.82	7,225.00	FORT HAYES				
7,748.08	7,246.00	CODELL				

Plan Annotations				
Measured Depth	Vertical Depth	Local Coordinates		
(usft)	(usft)	+N/-S (usft)	+E/-W (usft)	Comment
600.00	600.00	0.00	0.00	BUILD 2°/100'
1,281.45	1,275.04	-70.34	-39.49	HOLD 13.63° INC
6,780.52	6,619.27	-1,200.20	-673.87	KOP, BUILD 10°/100'
7,748.13	7,246.00	-1,325.28	-103.42	LP @ 90° INC, 89.34° AZM HOLD
12,186.07	7,246.00	-1,274.27	4,334.23	TD at 12186.07' MD