

EXTRACTION OIL & GAS

Weld County

Sec 3-T4N-R68W

JESSER 3E-10-15N

ORIGINAL WELLBORE

Plan: PROPOSAL 1

Standard Planning Report

25 May, 2017



Project: Weld County
Site: Sec 3-T4N-R68W
Well: JESSER 3E-10-15N
Wellbore: ORIGINAL WELLBORE
Design: PROPOSAL 1



Azimuths to True North
Magnetic North: 8.34°
Magnetic Field
Strength: 52349.7nT
Dip Angle: 66.77°
Date: 5/1/2017
Model: IGRF2015

WELL DETAILS: JESSER 3E-10-15N

+N/-S	+E/-W	Northing	Easting	5109.0	Latitude	Longitude	Slot
0.0	0.0	1367722.71	3140231.88	40° 20' 30.149 N	104° 59' 48.923 W		

SECTION DETAILS

Sec	MD	Inc	Azi	TVD	+N/-S	+E/-W	Dleg	TFace	VSect	Target
1	0.0	0.00	0.00	0.0	0.0	0.0	0.00	0.00	0.0	
2	700.0	0.00	0.00	700.0	0.0	0.0	0.00	0.00	0.0	
3	1583.2	17.66	204.65	1569.2	-122.8	-56.3	2.00	204.65	-10.0	
4	6516.5	17.66	204.65	6270.0	-1483.2	-680.5	0.00	0.00	-121.1	
5	7491.0	90.00	89.33	6892.0	-1655.7	-110.4	10.00	-114.26	473.5	JESSE
6	11917.3	90.00	89.33	6892.0	-1604.3	4315.6	0.00	0.00	4604.2	JESSE

ANNOTATIONS

MD	Inc	Azi	TVD	+N/-S	+E/-W	VSect	Departure	Annotation
700.0	0.00	0.00	700.0	0.0	0.0	0.0	0.0	BUILD 2°/100'
1583.2	17.66	204.65	1569.2	-122.8	-56.3	-10.0	135.1	HOLD 17.66° INC
6516.5	17.66	204.65	6270.0	-1483.2	-680.5	-121.1	1631.9	KOP, BUILD 10°/100'
7491.0	90.00	89.33	6892.0	-1655.7	-110.4	473.5	2275.3	LP @ 90° INC
11917.3	90.00	89.33	6892.0	-1604.3	4315.6	4604.2	6701.6	TD at 11917.3' MD

DESIGN TARGET DETAILS

Name	TVD	+N/-S	+E/-W	Northing	Easting	Latitude	Longitude	Shape
JESSER 3E-10-15N LP	6892.0	-1655.7	-110.4	1366066.41	3140130.88	40° 20' 13.787 N	104° 59' 50.348 W	Point
- plan hits target center								
JESSER 3E-10-15N PBHL	6892.0	-1604.3	4315.6	1366142.90	3144556.52	40° 20' 14.291 N	104° 58' 53.191 W	Point
- plan hits target center								

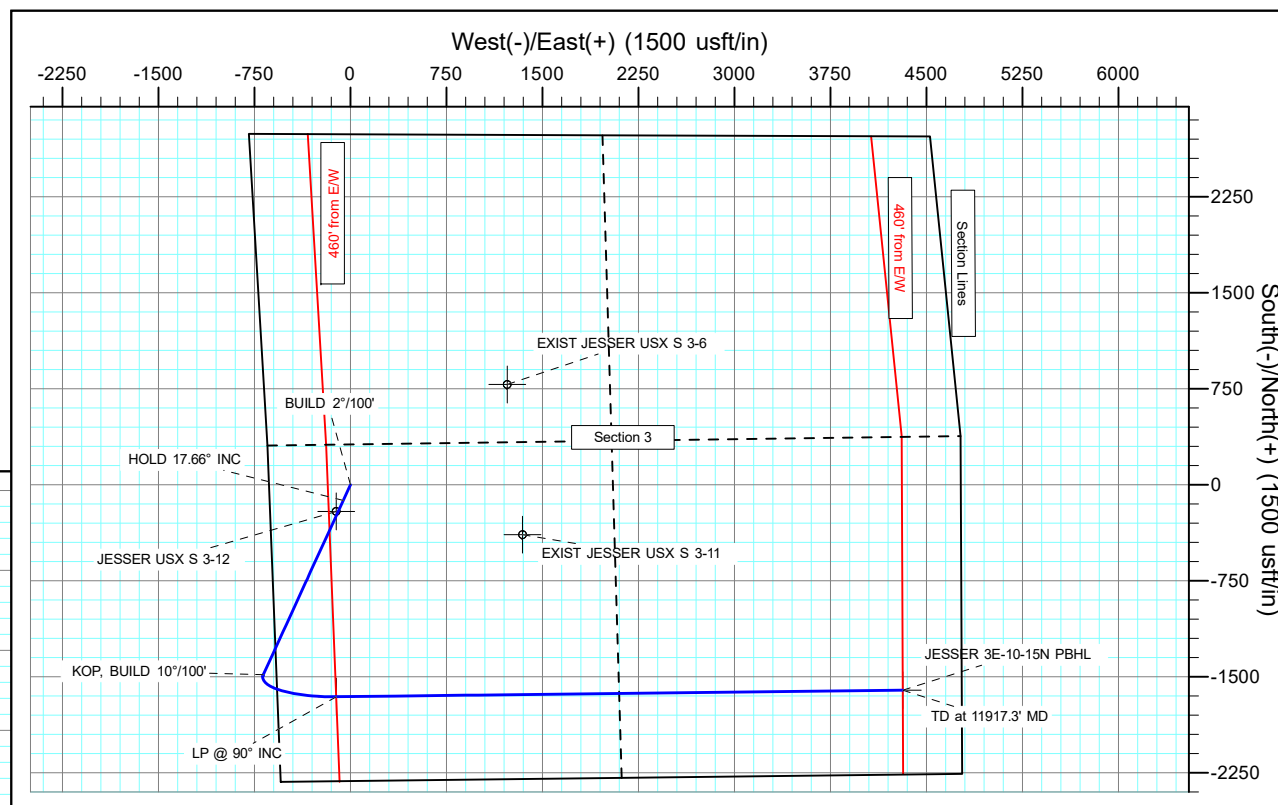
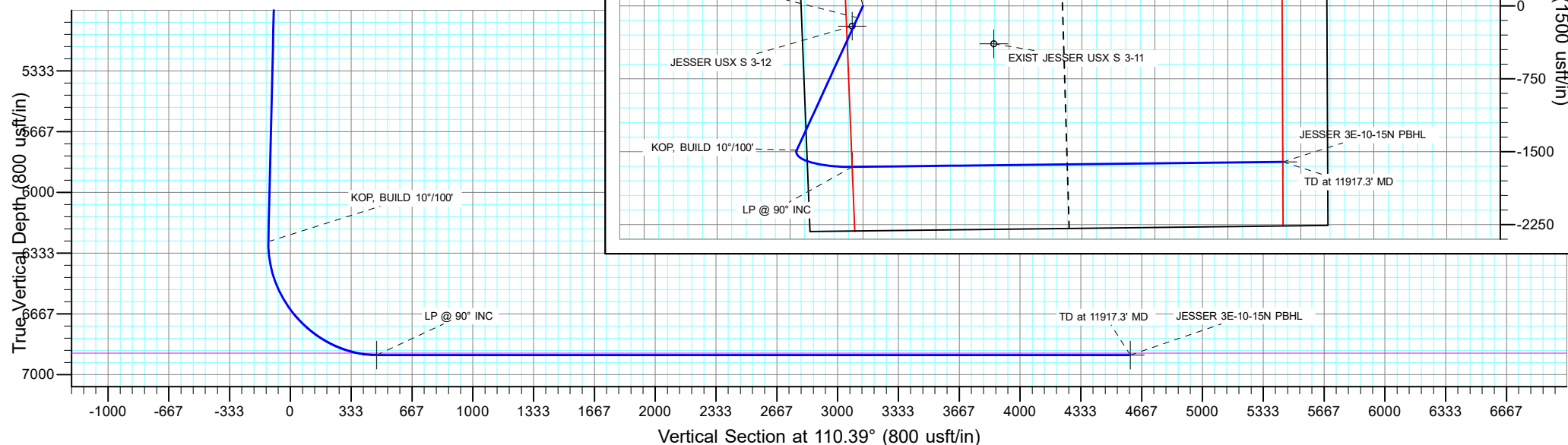
FORMATION TOP DETAILS

TVDPath	MDPath	Formation
3489.0	3597.9	PARKMAN
4026.0	4161.5	SUSSEX
4520.0	4679.9	SHANNON
6882.0	7381.6	NIOBRARA A

PROJECT DETAILS: Weld County

Geodetic System: US State Plane 1983
Datum: North American Datum 1983
Ellipsoid: GRS 1980
Zone: Colorado Northern Zone
System Datum: Mean Sea Level

SHL:
2314' FSL, 636' FWL
Sec 3-T4N-R68W
LP:
660' FSL, 460' FWL
Sec 3-T4N-R68W
BHL:
660' FSL, 460' FEL
Sec 3-T4N-R68W



Planning Report

Database:	EDT_32Bit_ODBC	Local Co-ordinate Reference:	Well JESSER 3E-10-15N
Company:	EXTRACTION OIL & GAS	TVD Reference:	KB 25' @ 5134.0usft
Project:	Weld County	MD Reference:	KB 25' @ 5134.0usft
Site:	Sec 3-T4N-R68W	North Reference:	True
Well:	JESSER 3E-10-15N	Survey Calculation Method:	Minimum Curvature
Wellbore:	ORIGINAL WELLBORE		
Design:	PROPOSAL 1		

Project	Weld County		
Map System:	US State Plane 1983	System Datum:	Mean Sea Level
Geo Datum:	North American Datum 1983		
Map Zone:	Colorado Northern Zone		

Site		Sec 3-T4N-R68W			
Site Position:		Northing:	1,365,399.13 usft	Latitude:	40° 20' 7.217 N
From:	Lat/Long	Easting:	3,139,700.88 usft	Longitude:	104° 59' 55.950 W
Position Uncertainty:	0.0 usft	Slot Radius:	13.200 in	Grid Convergence:	0.32 °

Well	JESSER 3E-10-15N					
Well Position	+N/-S	2,320.5 usft	Northing:	1,367,722.71 usft	Latitude:	40° 20' 30.149 N
	+E/-W	544.1 usft	Easting:	3,140,231.88 usft	Longitude:	104° 59' 48.923 W
Position Uncertainty		0.0 usft	Wellhead Elevation:		Ground Level:	5,109.0 usft

Wellbore	ORIGINAL WELLBORE				
Magnetics	Model Name	Sample Date	Declination (°)	Dip Angle (°)	Field Strength (nT)
	IGRF2015	5/1/2017	8.34	66.77	52,349.73068479

Design	PROPOSAL 1			
Audit Notes:				
Version:	Phase:	PROTOTYPE	Tie On Depth:	0.0
Vertical Section:	Depth From (TVD) (usft)	+N/-S (usft)	+E/-W (usft)	Direction (°)
	0.0	0.0	0.0	110.39

Plan Survey Tool Program	Date	5/25/2017		
Depth From (usft)	Depth To (usft)	Survey (Wellbore)	Tool Name	Remarks
1	0.0	11,917.3	PROPOSAL 1 (ORIGINAL WELL	MWD OWSG
			OWSG MWD - Standard	

Plan Sections										
Measured Depth (usft)	Inclination (°)	Azimuth (°)	Vertical Depth (usft)	+N/-S (usft)	+E/-W (usft)	Dogleg Rate (°/100ft)	Build Rate (°/100ft)	Turn Rate (°/100ft)	TFO (°)	Target
0.0	0.00	0.00	0.0	0.0	0.0	0.00	0.00	0.00	0.00	
700.0	0.00	0.00	700.0	0.0	0.0	0.00	0.00	0.00	0.00	
1,583.2	17.66	204.65	1,569.2	-122.8	-56.3	2.00	2.00	0.00	204.65	
6,516.5	17.66	204.65	6,270.0	-1,483.2	-680.5	0.00	0.00	0.00	0.00	
7,491.0	90.00	89.33	6,892.0	-1,655.7	-110.4	10.00	7.42	-11.83	-114.26	JESSER 3E-10-15N L
11,917.3	90.00	89.33	6,892.0	-1,604.3	4,315.6	0.00	0.00	0.00	0.00	JESSER 3E-10-15N F

Planning Report

Database:	EDT_32Bit_ODBC	Local Co-ordinate Reference:	Well JESSER 3E-10-15N
Company:	EXTRACTION OIL & GAS	TVD Reference:	KB 25' @ 5134.0usft
Project:	Weld County	MD Reference:	KB 25' @ 5134.0usft
Site:	Sec 3-T4N-R68W	North Reference:	True
Well:	JESSER 3E-10-15N	Survey Calculation Method:	Minimum Curvature
Wellbore:	ORIGINAL WELLBORE		
Design:	PROPOSAL 1		

Planned Survey									
Measured Depth (usft)	Inclination (°)	Azimuth (°)	Vertical Depth (usft)	+N/-S (usft)	+E/-W (usft)	Vertical Section (usft)	Dogleg Rate (°/100ft)	Build Rate (°/100ft)	Turn Rate (°/100ft)
0.0	0.00	0.00	0.0	0.0	0.0	0.0	0.00	0.00	0.00
100.0	0.00	0.00	100.0	0.0	0.0	0.0	0.00	0.00	0.00
200.0	0.00	0.00	200.0	0.0	0.0	0.0	0.00	0.00	0.00
300.0	0.00	0.00	300.0	0.0	0.0	0.0	0.00	0.00	0.00
400.0	0.00	0.00	400.0	0.0	0.0	0.0	0.00	0.00	0.00
500.0	0.00	0.00	500.0	0.0	0.0	0.0	0.00	0.00	0.00
600.0	0.00	0.00	600.0	0.0	0.0	0.0	0.00	0.00	0.00
700.0	0.00	0.00	700.0	0.0	0.0	0.0	0.00	0.00	0.00
BUILD 2°/100'									
800.0	2.00	204.65	800.0	-1.6	-0.7	-0.1	2.00	2.00	0.00
900.0	4.00	204.65	899.8	-6.3	-2.9	-0.5	2.00	2.00	0.00
1,000.0	6.00	204.65	999.5	-14.3	-6.5	-1.2	2.00	2.00	0.00
1,100.0	8.00	204.65	1,098.7	-25.3	-11.6	-2.1	2.00	2.00	0.00
1,200.0	10.00	204.65	1,197.5	-39.6	-18.1	-3.2	2.00	2.00	0.00
1,300.0	12.00	204.65	1,295.6	-56.9	-26.1	-4.6	2.00	2.00	0.00
1,400.0	14.00	204.65	1,393.1	-77.3	-35.5	-6.3	2.00	2.00	0.00
1,500.0	16.00	204.65	1,489.6	-100.9	-46.3	-8.2	2.00	2.00	0.00
1,583.2	17.66	204.65	1,569.2	-122.8	-56.3	-10.0	2.00	2.00	0.00
HOLD 17.66° INC									
1,600.0	17.66	204.65	1,585.3	-127.4	-58.5	-10.4	0.00	0.00	0.00
1,700.0	17.66	204.65	1,680.6	-155.0	-71.1	-12.6	0.00	0.00	0.00
1,800.0	17.66	204.65	1,775.9	-182.6	-83.8	-14.9	0.00	0.00	0.00
1,900.0	17.66	204.65	1,871.1	-210.1	-96.4	-17.1	0.00	0.00	0.00
2,000.0	17.66	204.65	1,966.4	-237.7	-109.1	-19.4	0.00	0.00	0.00
2,100.0	17.66	204.65	2,061.7	-265.3	-121.7	-21.7	0.00	0.00	0.00
2,200.0	17.66	204.65	2,157.0	-292.9	-134.4	-23.9	0.00	0.00	0.00
2,300.0	17.66	204.65	2,252.3	-320.4	-147.0	-26.2	0.00	0.00	0.00
2,400.0	17.66	204.65	2,347.6	-348.0	-159.7	-28.4	0.00	0.00	0.00
2,500.0	17.66	204.65	2,442.9	-375.6	-172.3	-30.7	0.00	0.00	0.00
2,600.0	17.66	204.65	2,538.1	-403.2	-185.0	-32.9	0.00	0.00	0.00
2,700.0	17.66	204.65	2,633.4	-430.8	-197.6	-35.2	0.00	0.00	0.00
2,800.0	17.66	204.65	2,728.7	-458.3	-210.3	-37.4	0.00	0.00	0.00
2,900.0	17.66	204.65	2,824.0	-485.9	-222.9	-39.7	0.00	0.00	0.00
3,000.0	17.66	204.65	2,919.3	-513.5	-235.6	-41.9	0.00	0.00	0.00
3,100.0	17.66	204.65	3,014.6	-541.1	-248.3	-44.2	0.00	0.00	0.00
3,200.0	17.66	204.65	3,109.9	-568.6	-260.9	-46.4	0.00	0.00	0.00
3,300.0	17.66	204.65	3,205.1	-596.2	-273.6	-48.7	0.00	0.00	0.00
3,400.0	17.66	204.65	3,300.4	-623.8	-286.2	-50.9	0.00	0.00	0.00
3,500.0	17.66	204.65	3,395.7	-651.4	-298.9	-53.2	0.00	0.00	0.00
3,597.9	17.66	204.65	3,489.0	-678.4	-311.3	-55.4	0.00	0.00	0.00
PARKMAN									
3,600.0	17.66	204.65	3,491.0	-679.0	-311.5	-55.4	0.00	0.00	0.00
3,700.0	17.66	204.65	3,586.3	-706.5	-324.2	-57.7	0.00	0.00	0.00
3,800.0	17.66	204.65	3,681.6	-734.1	-336.8	-59.9	0.00	0.00	0.00
3,900.0	17.66	204.65	3,776.9	-761.7	-349.5	-62.2	0.00	0.00	0.00
4,000.0	17.66	204.65	3,872.1	-789.3	-362.1	-64.4	0.00	0.00	0.00
4,100.0	17.66	204.65	3,967.4	-816.8	-374.8	-66.7	0.00	0.00	0.00
4,161.5	17.66	204.65	4,026.0	-833.8	-382.6	-68.1	0.00	0.00	0.00
SUSSEX									
4,200.0	17.66	204.65	4,062.7	-844.4	-387.4	-68.9	0.00	0.00	0.00
4,300.0	17.66	204.65	4,158.0	-872.0	-400.1	-71.2	0.00	0.00	0.00
4,400.0	17.66	204.65	4,253.3	-899.6	-412.7	-73.4	0.00	0.00	0.00
4,500.0	17.66	204.65	4,348.6	-927.2	-425.4	-75.7	0.00	0.00	0.00

Planning Report

Database:	EDT_32Bit_ODBC	Local Co-ordinate Reference:	Well JESSER 3E-10-15N
Company:	EXTRACTION OIL & GAS	TVD Reference:	KB 25' @ 5134.0usft
Project:	Weld County	MD Reference:	KB 25' @ 5134.0usft
Site:	Sec 3-T4N-R68W	North Reference:	True
Well:	JESSER 3E-10-15N	Survey Calculation Method:	Minimum Curvature
Wellbore:	ORIGINAL WELLBORE		
Design:	PROPOSAL 1		

Planned Survey									
Measured Depth (usft)	Inclination (°)	Azimuth (°)	Vertical Depth (usft)	+N/-S (usft)	+E/-W (usft)	Vertical Section (usft)	Dogleg Rate (°/100ft)	Build Rate (°/100ft)	Turn Rate (°/100ft)
4,600.0	17.66	204.65	4,443.9	-954.7	-438.1	-77.9	0.00	0.00	0.00
4,679.9	17.66	204.65	4,520.0	-976.8	-448.2	-79.7	0.00	0.00	0.00
SHANNON									
4,700.0	17.66	204.65	4,539.1	-982.3	-450.7	-80.2	0.00	0.00	0.00
4,800.0	17.66	204.65	4,634.4	-1,009.9	-463.4	-82.4	0.00	0.00	0.00
4,900.0	17.66	204.65	4,729.7	-1,037.5	-476.0	-84.7	0.00	0.00	0.00
5,000.0	17.66	204.65	4,825.0	-1,065.0	-488.7	-86.9	0.00	0.00	0.00
5,100.0	17.66	204.65	4,920.3	-1,092.6	-501.3	-89.2	0.00	0.00	0.00
5,200.0	17.66	204.65	5,015.6	-1,120.2	-514.0	-91.4	0.00	0.00	0.00
5,300.0	17.66	204.65	5,110.9	-1,147.8	-526.6	-93.7	0.00	0.00	0.00
5,400.0	17.66	204.65	5,206.1	-1,175.4	-539.3	-95.9	0.00	0.00	0.00
5,500.0	17.66	204.65	5,301.4	-1,202.9	-551.9	-98.2	0.00	0.00	0.00
5,600.0	17.66	204.65	5,396.7	-1,230.5	-564.6	-100.4	0.00	0.00	0.00
5,700.0	17.66	204.65	5,492.0	-1,258.1	-577.2	-102.7	0.00	0.00	0.00
5,800.0	17.66	204.65	5,587.3	-1,285.7	-589.9	-104.9	0.00	0.00	0.00
5,900.0	17.66	204.65	5,682.6	-1,313.2	-602.5	-107.2	0.00	0.00	0.00
6,000.0	17.66	204.65	5,777.9	-1,340.8	-615.2	-109.4	0.00	0.00	0.00
6,100.0	17.66	204.65	5,873.1	-1,368.4	-627.9	-111.7	0.00	0.00	0.00
6,200.0	17.66	204.65	5,968.4	-1,396.0	-640.5	-113.9	0.00	0.00	0.00
6,300.0	17.66	204.65	6,063.7	-1,423.6	-653.2	-116.2	0.00	0.00	0.00
6,400.0	17.66	204.65	6,159.0	-1,451.1	-665.8	-118.4	0.00	0.00	0.00
6,500.0	17.66	204.65	6,254.3	-1,478.7	-678.5	-120.7	0.00	0.00	0.00
6,516.5	17.66	204.65	6,270.0	-1,483.2	-680.5	-121.1	0.00	0.00	0.00
KOP, BUILD 10°/100'									
6,550.0	16.56	193.86	6,302.0	-1,492.5	-683.8	-120.9	10.00	-3.29	-32.16
6,600.0	16.08	176.09	6,350.0	-1,506.4	-685.1	-117.2	10.00	-0.95	-35.55
6,650.0	17.08	158.85	6,398.0	-1,520.1	-681.9	-109.5	10.00	2.00	-34.47
6,700.0	19.33	144.49	6,445.5	-1,533.7	-674.5	-97.8	10.00	4.49	-28.72
6,750.0	22.45	133.50	6,492.2	-1,547.0	-662.7	-82.1	10.00	6.24	-21.99
6,800.0	26.14	125.26	6,537.8	-1,560.0	-646.8	-62.7	10.00	7.37	-16.48
6,850.0	30.18	119.01	6,581.9	-1,572.4	-626.8	-39.6	10.00	8.09	-12.50
6,900.0	34.45	114.14	6,624.2	-1,584.3	-602.9	-13.1	10.00	8.55	-9.73
6,950.0	38.88	110.25	6,664.3	-1,595.5	-575.2	16.8	10.00	8.86	-7.79
7,000.0	43.42	107.05	6,701.9	-1,606.0	-544.1	49.6	10.00	9.07	-6.41
7,050.0	48.03	104.34	6,736.8	-1,615.7	-509.6	85.3	10.00	9.22	-5.41
7,100.0	52.69	102.01	6,768.7	-1,624.4	-472.1	123.5	10.00	9.33	-4.67
7,150.0	57.40	99.94	6,797.3	-1,632.2	-431.9	163.9	10.00	9.41	-4.12
7,200.0	62.14	98.09	6,822.5	-1,638.9	-389.3	206.2	10.00	9.47	-3.71
7,250.0	66.90	96.39	6,844.0	-1,644.6	-344.5	250.2	10.00	9.52	-3.40
7,300.0	71.67	94.81	6,861.7	-1,649.2	-298.0	295.4	10.00	9.55	-3.16
7,350.0	76.46	93.31	6,875.4	-1,652.5	-250.0	341.5	10.00	9.58	-2.99
7,381.6	79.50	92.39	6,882.0	-1,654.1	-219.1	371.0	10.00	9.59	-2.89
NIOBRARA A									
7,400.0	81.26	91.87	6,885.1	-1,654.8	-201.0	388.2	10.00	9.60	-2.85
7,450.0	86.06	90.47	6,890.6	-1,655.8	-151.4	435.1	10.00	9.60	-2.80
7,491.0	90.00	89.33	6,892.0	-1,655.7	-110.4	473.5	10.00	9.61	-2.77
LP @ 90° INC									
7,500.0	90.00	89.33	6,892.0	-1,655.6	-101.4	481.8	0.00	0.00	0.00
7,600.0	90.00	89.33	6,892.0	-1,654.4	-1.4	575.2	0.00	0.00	0.00
7,700.0	90.00	89.33	6,892.0	-1,653.3	98.6	668.5	0.00	0.00	0.00
7,800.0	90.00	89.33	6,892.0	-1,652.1	198.6	761.8	0.00	0.00	0.00
7,900.0	90.00	89.33	6,892.0	-1,651.0	298.6	855.1	0.00	0.00	0.00
8,000.0	90.00	89.33	6,892.0	-1,649.8	398.6	948.5	0.00	0.00	0.00

Planning Report

Database:	EDT_32Bit_ODBC	Local Co-ordinate Reference:	Well JESSER 3E-10-15N
Company:	EXTRACTION OIL & GAS	TVD Reference:	KB 25' @ 5134.0usft
Project:	Weld County	MD Reference:	KB 25' @ 5134.0usft
Site:	Sec 3-T4N-R68W	North Reference:	True
Well:	JESSER 3E-10-15N	Survey Calculation Method:	Minimum Curvature
Wellbore:	ORIGINAL WELLBORE		
Design:	PROPOSAL 1		

Planned Survey										
Measured Depth (usft)	Inclination (°)	Azimuth (°)	Vertical Depth (usft)	+N/-S (usft)	+E/-W (usft)	Vertical Section (usft)	Dogleg Rate (°/100ft)	Build Rate (°/100ft)	Turn Rate (°/100ft)	
8,100.0	90.00	89.33	6,892.0	-1,648.6	498.6	1,041.8	0.00	0.00	0.00	
8,200.0	90.00	89.33	6,892.0	-1,647.5	598.6	1,135.1	0.00	0.00	0.00	
8,300.0	90.00	89.33	6,892.0	-1,646.3	698.5	1,228.4	0.00	0.00	0.00	
8,400.0	90.00	89.33	6,892.0	-1,645.1	798.5	1,321.7	0.00	0.00	0.00	
8,500.0	90.00	89.33	6,892.0	-1,644.0	898.5	1,415.1	0.00	0.00	0.00	
8,600.0	90.00	89.33	6,892.0	-1,642.8	998.5	1,508.4	0.00	0.00	0.00	
8,700.0	90.00	89.33	6,892.0	-1,641.7	1,098.5	1,601.7	0.00	0.00	0.00	
8,800.0	90.00	89.33	6,892.0	-1,640.5	1,198.5	1,695.0	0.00	0.00	0.00	
8,900.0	90.00	89.33	6,892.0	-1,639.3	1,298.5	1,788.4	0.00	0.00	0.00	
9,000.0	90.00	89.33	6,892.0	-1,638.2	1,398.5	1,881.7	0.00	0.00	0.00	
9,100.0	90.00	89.33	6,892.0	-1,637.0	1,498.5	1,975.0	0.00	0.00	0.00	
9,200.0	90.00	89.33	6,892.0	-1,635.9	1,598.5	2,068.3	0.00	0.00	0.00	
9,300.0	90.00	89.33	6,892.0	-1,634.7	1,698.5	2,161.6	0.00	0.00	0.00	
9,400.0	90.00	89.33	6,892.0	-1,633.5	1,798.5	2,255.0	0.00	0.00	0.00	
9,500.0	90.00	89.33	6,892.0	-1,632.4	1,898.5	2,348.3	0.00	0.00	0.00	
9,600.0	90.00	89.33	6,892.0	-1,631.2	1,998.5	2,441.6	0.00	0.00	0.00	
9,700.0	90.00	89.33	6,892.0	-1,630.1	2,098.5	2,534.9	0.00	0.00	0.00	
9,800.0	90.00	89.33	6,892.0	-1,628.9	2,198.4	2,628.3	0.00	0.00	0.00	
9,900.0	90.00	89.33	6,892.0	-1,627.7	2,298.4	2,721.6	0.00	0.00	0.00	
10,000.0	90.00	89.33	6,892.0	-1,626.6	2,398.4	2,814.9	0.00	0.00	0.00	
10,100.0	90.00	89.33	6,892.0	-1,625.4	2,498.4	2,908.2	0.00	0.00	0.00	
10,200.0	90.00	89.33	6,892.0	-1,624.3	2,598.4	3,001.5	0.00	0.00	0.00	
10,300.0	90.00	89.33	6,892.0	-1,623.1	2,698.4	3,094.9	0.00	0.00	0.00	
10,400.0	90.00	89.33	6,892.0	-1,621.9	2,798.4	3,188.2	0.00	0.00	0.00	
10,500.0	90.00	89.33	6,892.0	-1,620.8	2,898.4	3,281.5	0.00	0.00	0.00	
10,600.0	90.00	89.33	6,892.0	-1,619.6	2,998.4	3,374.8	0.00	0.00	0.00	
10,700.0	90.00	89.33	6,892.0	-1,618.5	3,098.4	3,468.2	0.00	0.00	0.00	
10,800.0	90.00	89.33	6,892.0	-1,617.3	3,198.4	3,561.5	0.00	0.00	0.00	
10,900.0	90.00	89.33	6,892.0	-1,616.1	3,298.4	3,654.8	0.00	0.00	0.00	
11,000.0	90.00	89.33	6,892.0	-1,615.0	3,398.4	3,748.1	0.00	0.00	0.00	
11,100.0	90.00	89.33	6,892.0	-1,613.8	3,498.4	3,841.4	0.00	0.00	0.00	
11,200.0	90.00	89.33	6,892.0	-1,612.6	3,598.4	3,934.8	0.00	0.00	0.00	
11,300.0	90.00	89.33	6,892.0	-1,611.5	3,698.3	4,028.1	0.00	0.00	0.00	
11,400.0	90.00	89.33	6,892.0	-1,610.3	3,798.3	4,121.4	0.00	0.00	0.00	
11,500.0	90.00	89.33	6,892.0	-1,609.2	3,898.3	4,214.7	0.00	0.00	0.00	
11,600.0	90.00	89.33	6,892.0	-1,608.0	3,998.3	4,308.0	0.00	0.00	0.00	
11,700.0	90.00	89.33	6,892.0	-1,606.8	4,098.3	4,401.4	0.00	0.00	0.00	
11,800.0	90.00	89.33	6,892.0	-1,605.7	4,198.3	4,494.7	0.00	0.00	0.00	
11,900.0	90.00	89.33	6,892.0	-1,604.5	4,298.3	4,588.0	0.00	0.00	0.00	
11,917.3	90.00	89.33	6,892.0	-1,604.3	4,315.6	4,604.2	0.00	0.00	0.00	
TD at 11917.3' MD										

Planning Report

Database:	EDT_32Bit_ODBC	Local Co-ordinate Reference:	Well JESSER 3E-10-15N
Company:	EXTRACTION OIL & GAS	TVD Reference:	KB 25' @ 5134.0usft
Project:	Weld County	MD Reference:	KB 25' @ 5134.0usft
Site:	Sec 3-T4N-R68W	North Reference:	True
Well:	JESSER 3E-10-15N	Survey Calculation Method:	Minimum Curvature
Wellbore:	ORIGINAL WELLBORE		
Design:	PROPOSAL 1		

Design Targets									
Target Name	Dip Angle	Dip Dir.	TVD	+N/-S	+E/-W	Northing	Easting	Latitude	Longitude
- hit/miss target	(°)	(°)	(usft)	(usft)	(usft)	(usft)	(usft)		
- Shape									
JESSER 3E-10-15N LP	0.00	0.00	6,892.0	-1,655.7	-110.4	1,366,066.41	3,140,130.88	40° 20' 13.787 N	104° 59' 50.348 W
- plan hits target center									
- Point									
JESSER 3E-10-15N PBI	0.00	0.00	6,892.0	-1,604.3	4,315.6	1,366,142.90	3,144,556.52	40° 20' 14.291 N	104° 58' 53.191 W
- plan hits target center									
- Point									

Formations						
Measured Depth	Vertical Depth	Name	Lithology	Dip	Dip Direction	
(usft)	(usft)			(°)	(°)	
3,597.9	3,489.0	PARKMAN				
4,161.5	4,026.0	SUSSEX				
4,679.9	4,520.0	SHANNON				
7,381.6	6,882.0	NIOBRARA A				

Plan Annotations					
Measured Depth	Vertical Depth	Local Coordinates			
(usft)	(usft)	+N/-S	+E/-W	Comment	
(usft)	(usft)	(usft)	(usft)		
700.0	700.0	0.0	0.0	BUILD 2°/100'	
1,583.2	1,569.2	-122.8	-56.3	HOLD 17.66° INC	
6,516.5	6,270.0	-1,483.2	-680.5	KOP, BUILD 10°/100'	
7,491.0	6,892.0	-1,655.7	-110.4	LP @ 90° INC	
11,917.3	6,892.0	-1,604.3	4,315.6	TD at 11917.3' MD	