



Scale: 5" / 100'  
Measured Depth Log

**Well Name** Fairview 9

**Location** Sec 5, T2N, R68W

**State** CO

**County** Weld

**Country** USA

**Rig Number** Savanna 802

**API Number** 05-123-41520

**Field** Wattenberg

**Geographic Region** DJ Basin

**Drilling Completed** 12/29/2015

**Spud Date** 12/9/2015

**Surface Coordinates** Lat: 40° 9' 56.7612" N  
Long: 105° 2' 7.6848" W

**Bottom Hole Coordinates** Lat: 40° 10' 3.190" N  
Long: 104° 56' 19.448" W

**Ground Elevation** 4,948'

**K.B. Elevation** 4,963'

**Logged Interval** 5,000' To 6,700'

**Total Depth** 14565' MD

**Formation** Coddell

**Type of Drilling Fluid** Invert

## Operator

**Company** Extraction Oil & Gas

**Address** 1888 Sherman St., Suite 200  
Denver, CO 80203









## Geologist

**Name** Jared Rouse

**Company** Extraction Oil & Gas

**Address** 1888 Sherman St., Suite 200  
Denver, CO 80203

## Zone Color Coding

 Oil	 Condensate	 Gas
 Note	 Core	 Pressure
 Error	 Water	 Seal



## Other

**Equipment** ML-197

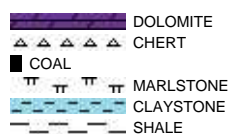
**Comments** Start: 12-26-15  
End: 12-29-15

**Logger Names** Mark Gross/ Brian Ferwerda

**Services Provided** 2-man logging

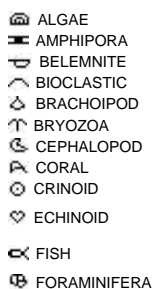
**Address** Empirica, LLC.  
6360 W Sam Houston Pkwy N  
Suite 100  
Houston, TX 77041

## Rock Types



## Accessories

### Fossils



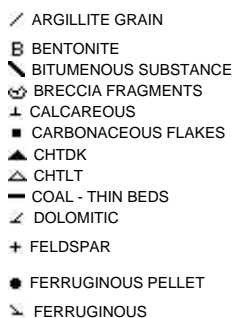
### F FOSSIL



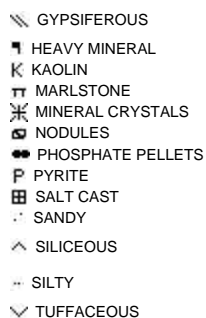
### Minerals



### ARGILLACEOUS



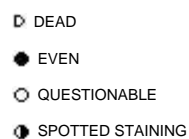
### GLAUCONITE



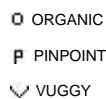
### Stringer



### Oil Show



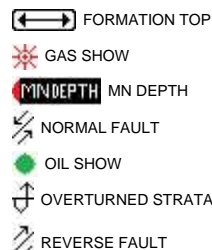
### Porosity



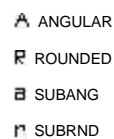
### Engineering



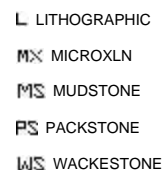
## Other Symbols



### Rounding



### Textures



### Sorting

PROPERTY

- E EARTHY
- ▣ FENESTRAL
- F FRACTURE
- × INTERCRYSTALLINE
- ⊕ INTEROOLITIC
- ⚡ MOLDIC

- ◀ CONNECTION (LEFT)
- ▶ CONNECTION (RIGHT)
- ⬮ CONNECTION GAS
- ⬇ CORE - LOST
- CORE - RECOVERED
- ⋮ DST INTERVAL
- ⚡ FAULT

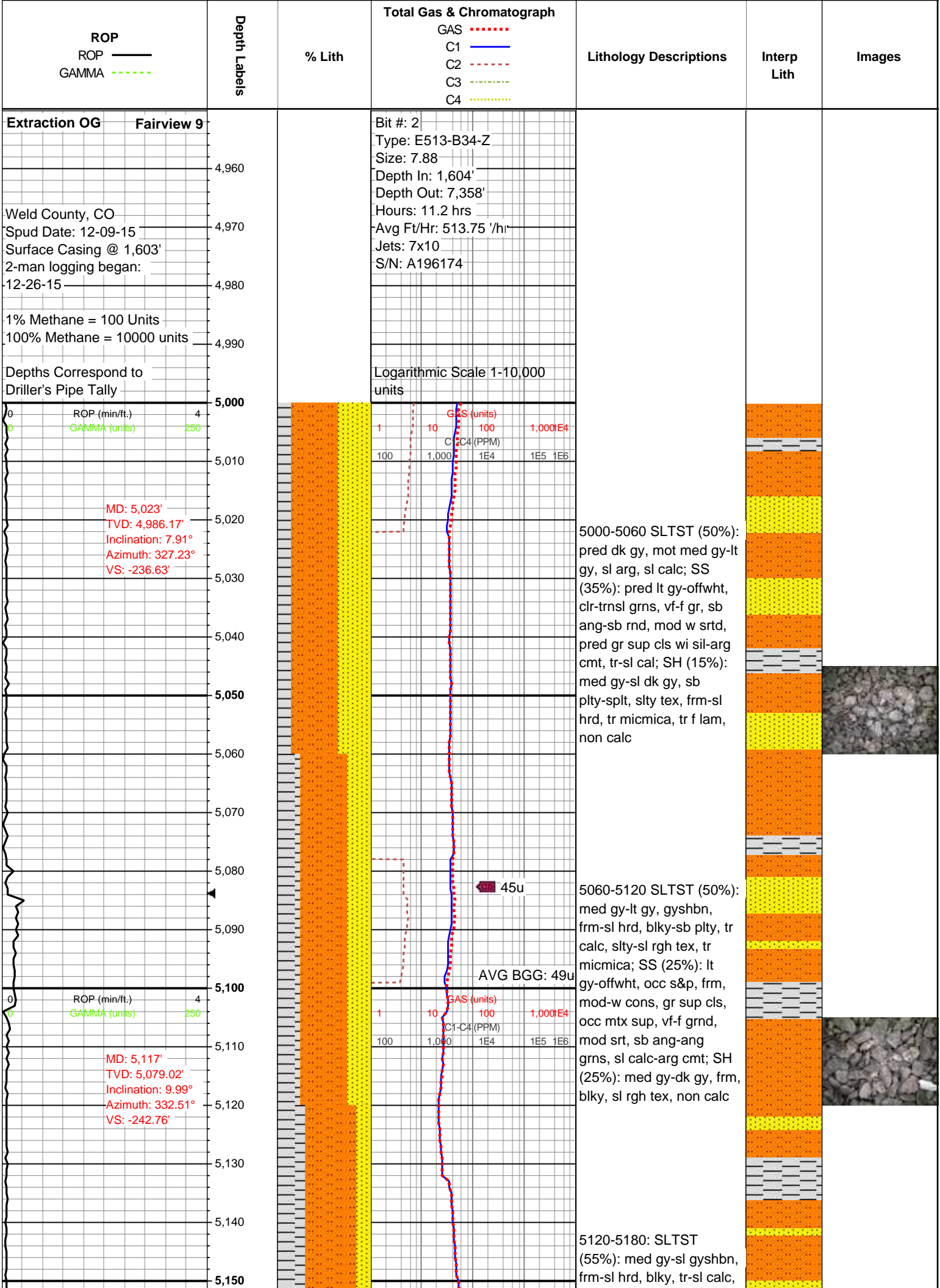
- ◀ SIDEWALL CORE (LEFT)
- ▶ SIDEWALL CORE (RIGHT)
- ▨ SLIDE
- DS SURVEY
- ⬮ TRIP GAS
- ◀ WIRELINE TESTED - LEFT
- ▶ WIRELINE TESTED - RT

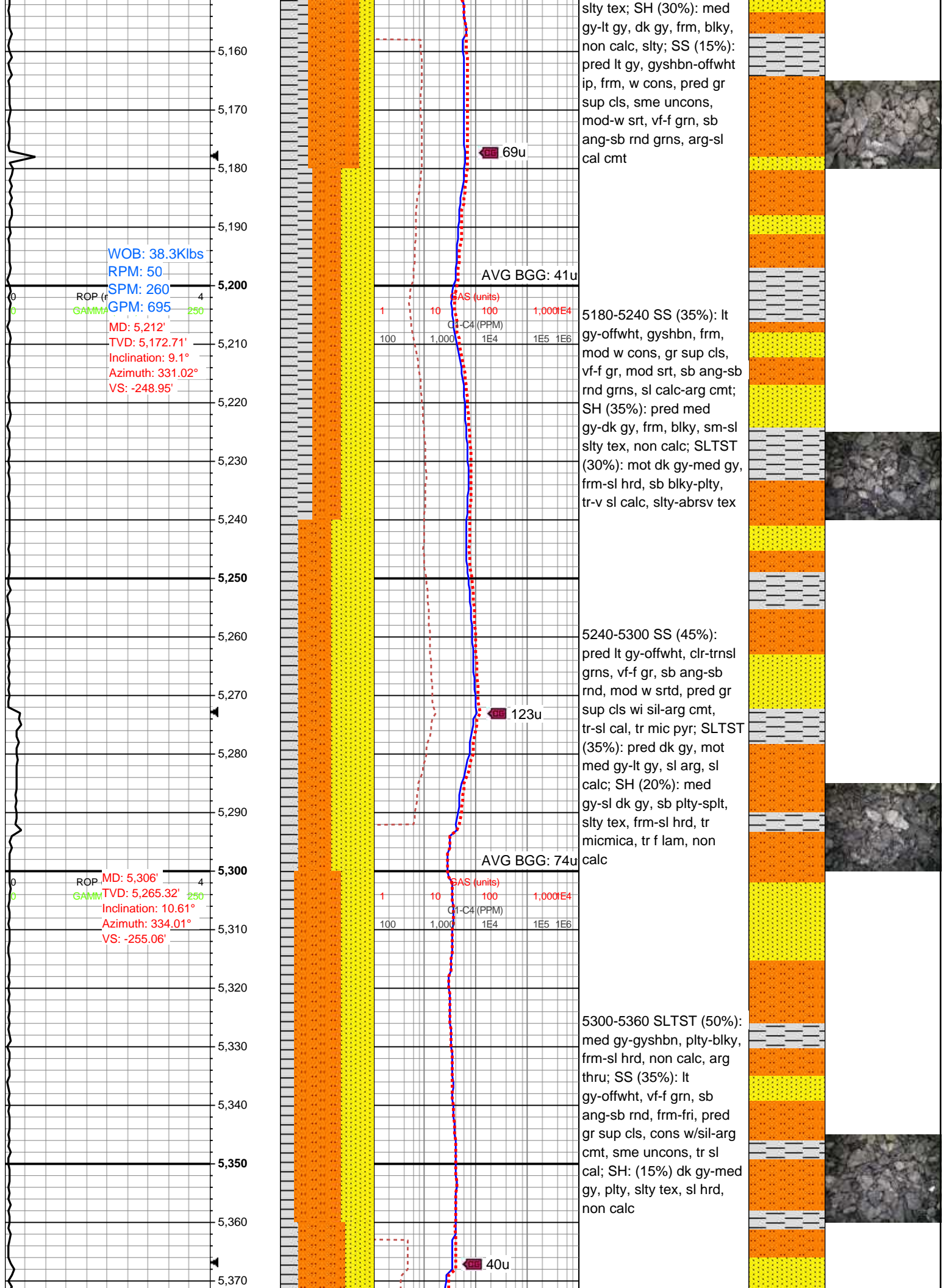
FOUNDER

- BS BOUNDSTONE
- C CHALKY
- CX CRYPTOXLN
- E EARTHY
- F× FINELYXLN
- GS GRAINSTONE

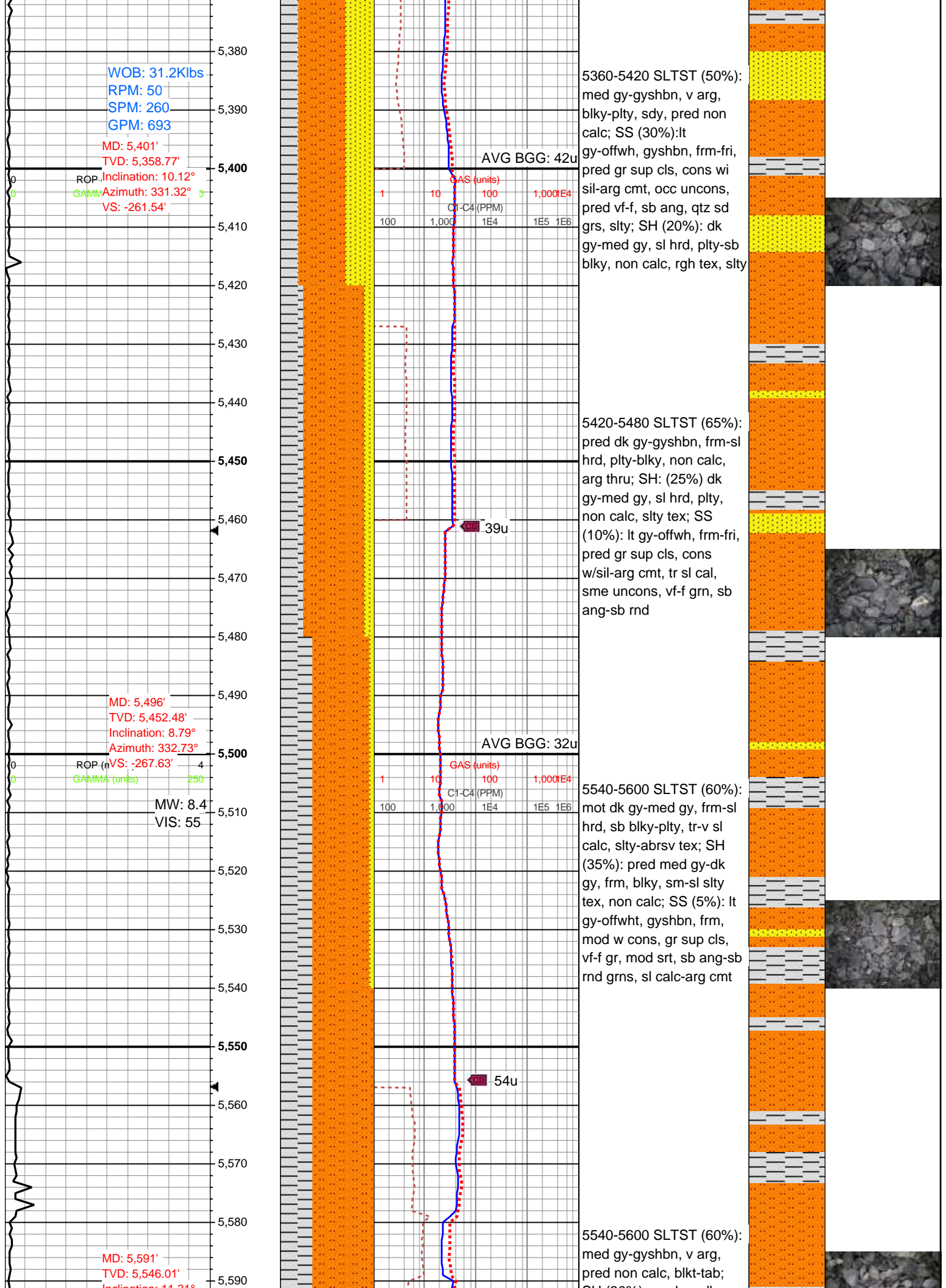
MODERATE

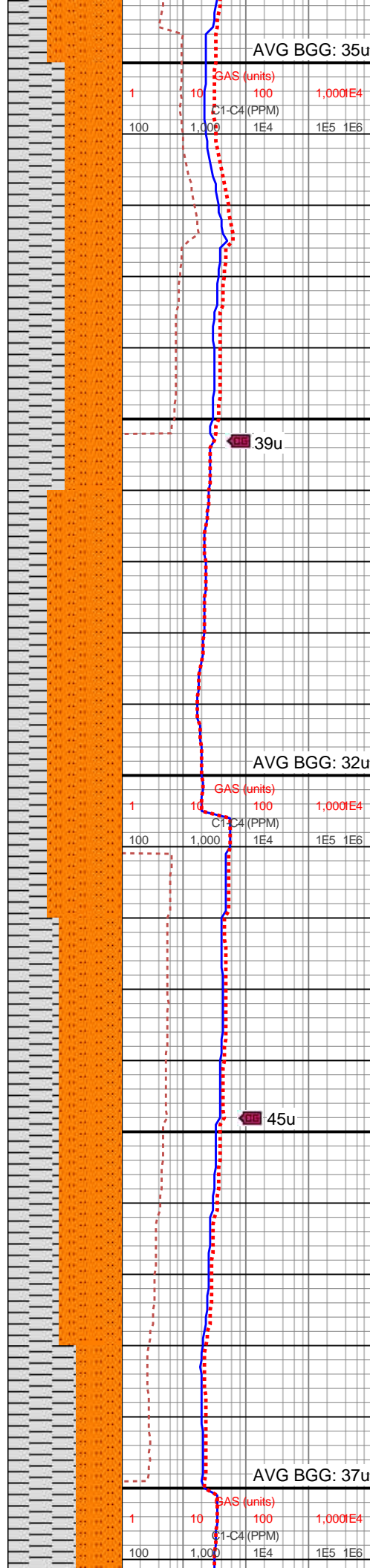
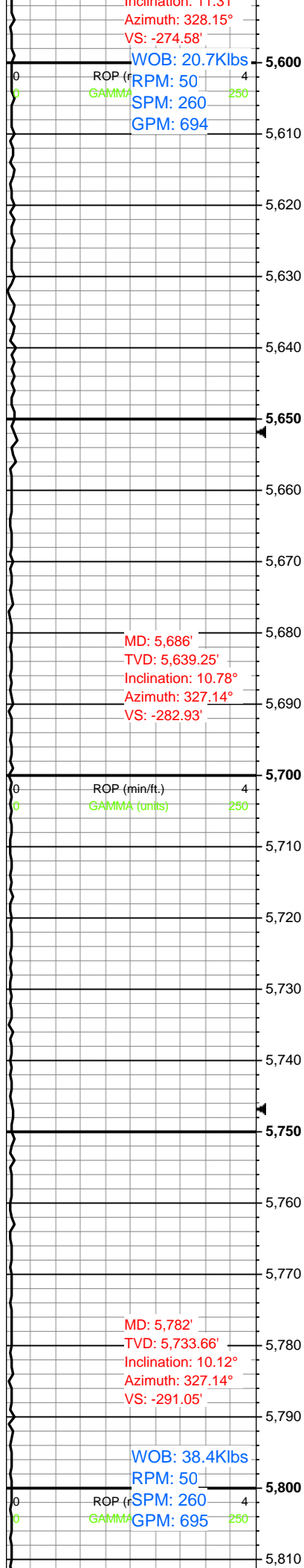
- P POOR
- W WELL









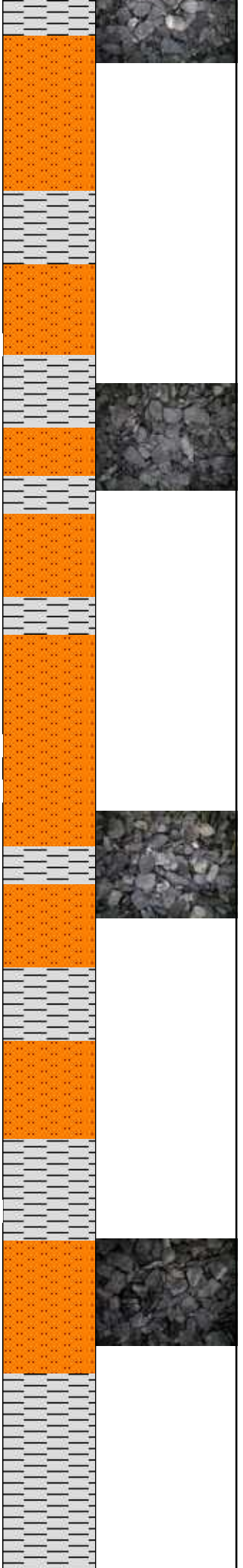


SH (30%): med gy-dk gy,  
frm-v frm, sl brit, blkyl-sb  
plty, slty tex, non calc

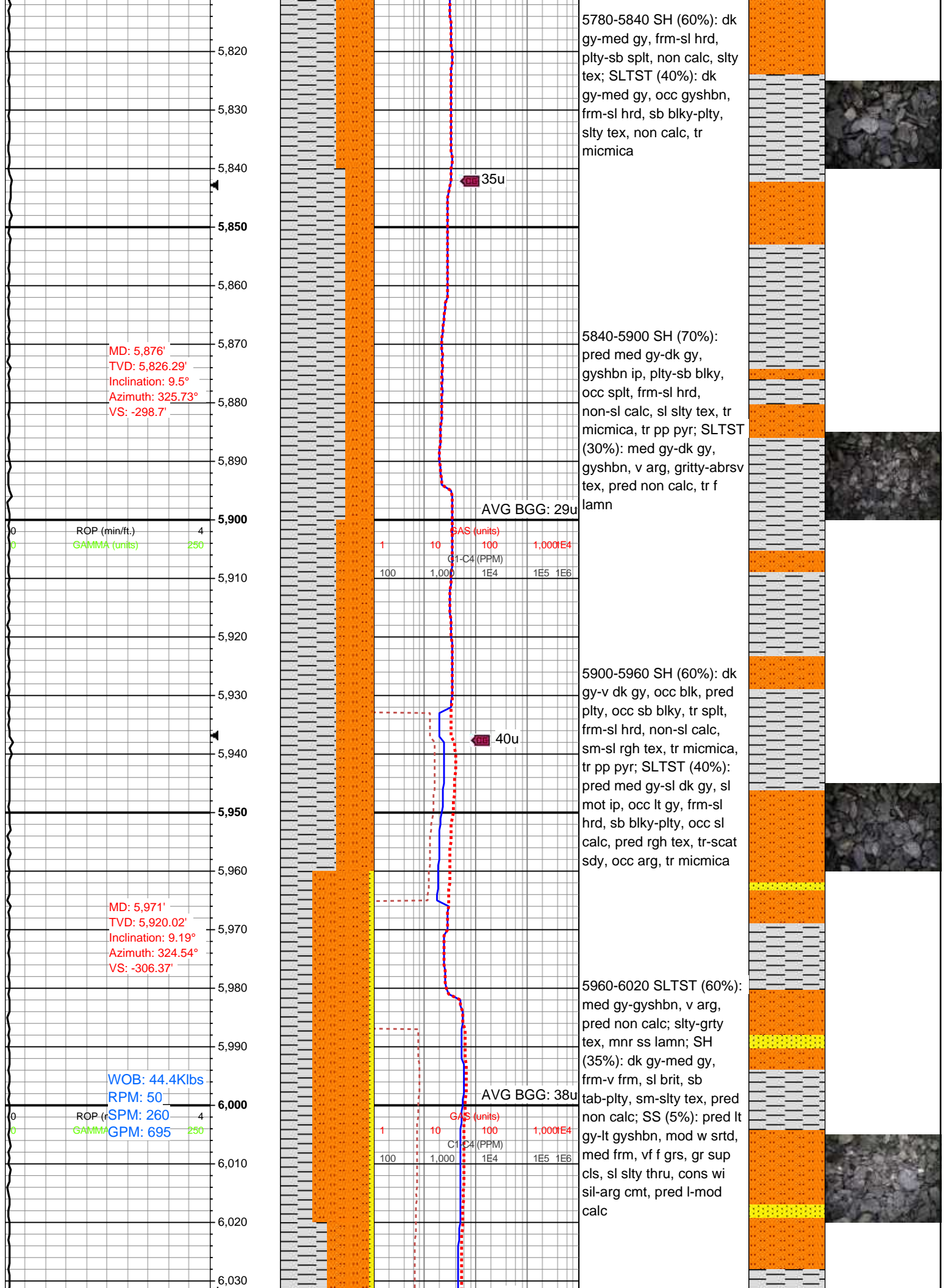
5600-5660 SLTST (50%):  
med gy-gyshbn, v arg,  
blkyl-plty, sdy, pred non  
calc; SH (50%): dk  
gy-med gy, sl hrd, plty-sb  
blkyl, non calc, rgh tex, slty

5660-5720 SLTST (65%):  
gy-gyshbn, occ lt gy-dk  
gy, occ sd grs, mod-v arg,  
pred non calc-v sl calc;  
SH (35%): pred med gy,  
occ dk gy, mod fis, frm-v  
frm, sb plty-plty, sm-slty  
tex, non calc

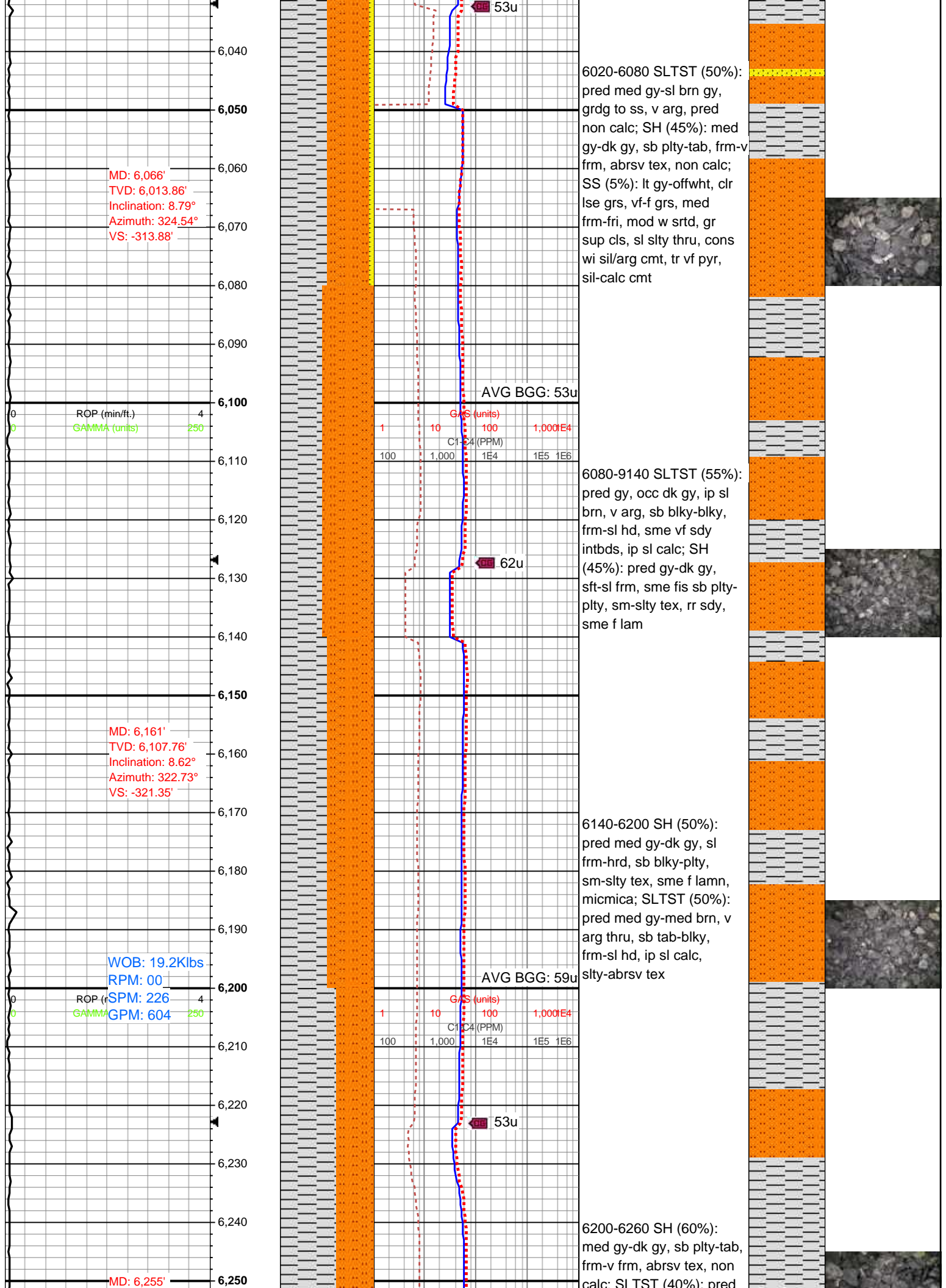
5720-5780 SLTST (55%):  
med gy-gyshbn, frm-sl  
hrd, blkyl-tab, non calc;  
SH (45%): dk gy-med gy,  
sl hrd, plty-sl elg, non  
calc, rgh tex, slty











TVD: 6,200.7'  
Inclination: 8.62°  
Azimuth: 321.85°  
VS: -328.96'

12/27/15 MINDEPTH

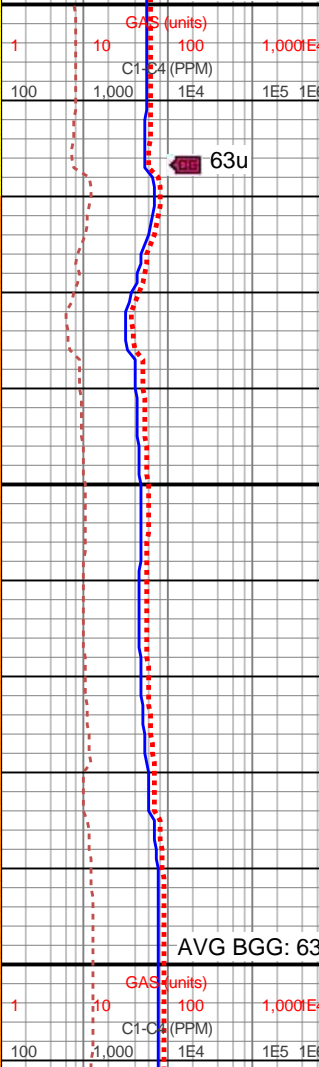
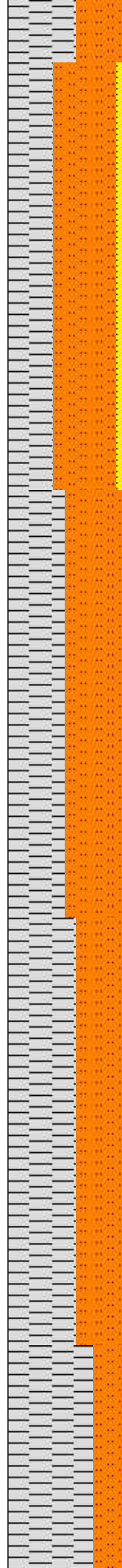
ROP (min/ft.) 4  
GAMMA (units) 250

MD: 6,351'  
TVD: 6,295.45'  
Inclination: 9.9°  
Azimuth: 328.64°  
VS: -336.55'

WOB: 37Klbs  
RPM: 50  
SPM: 260  
GPM: 695

MD: 6,445'  
TVD: 6,388.12'  
Inclination: 9.41°  
Azimuth: 325.24°  
VS: -343.94'

6,260  
6,270  
6,280  
6,290  
6,300  
6,310  
6,320  
6,330  
6,340  
6,350  
6,360  
6,370  
6,380  
6,390  
6,400  
6,410  
6,420  
6,430  
6,440  
6,450  
6,460  
6,470



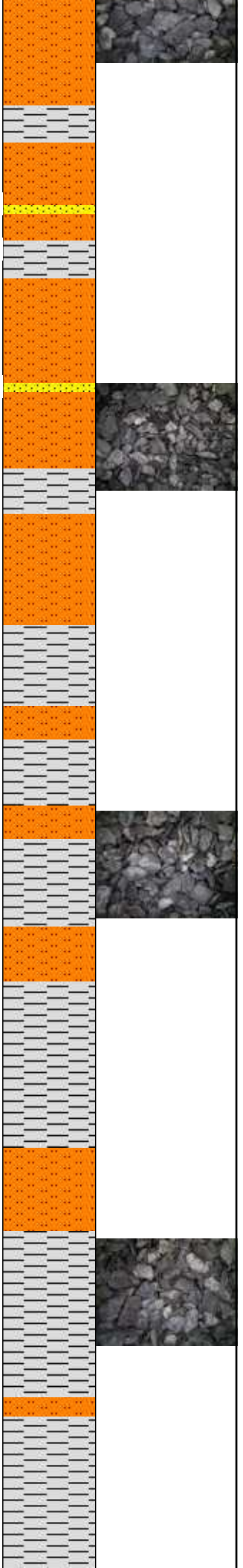
AVG BGG: 61u

AVG BGG: 63u

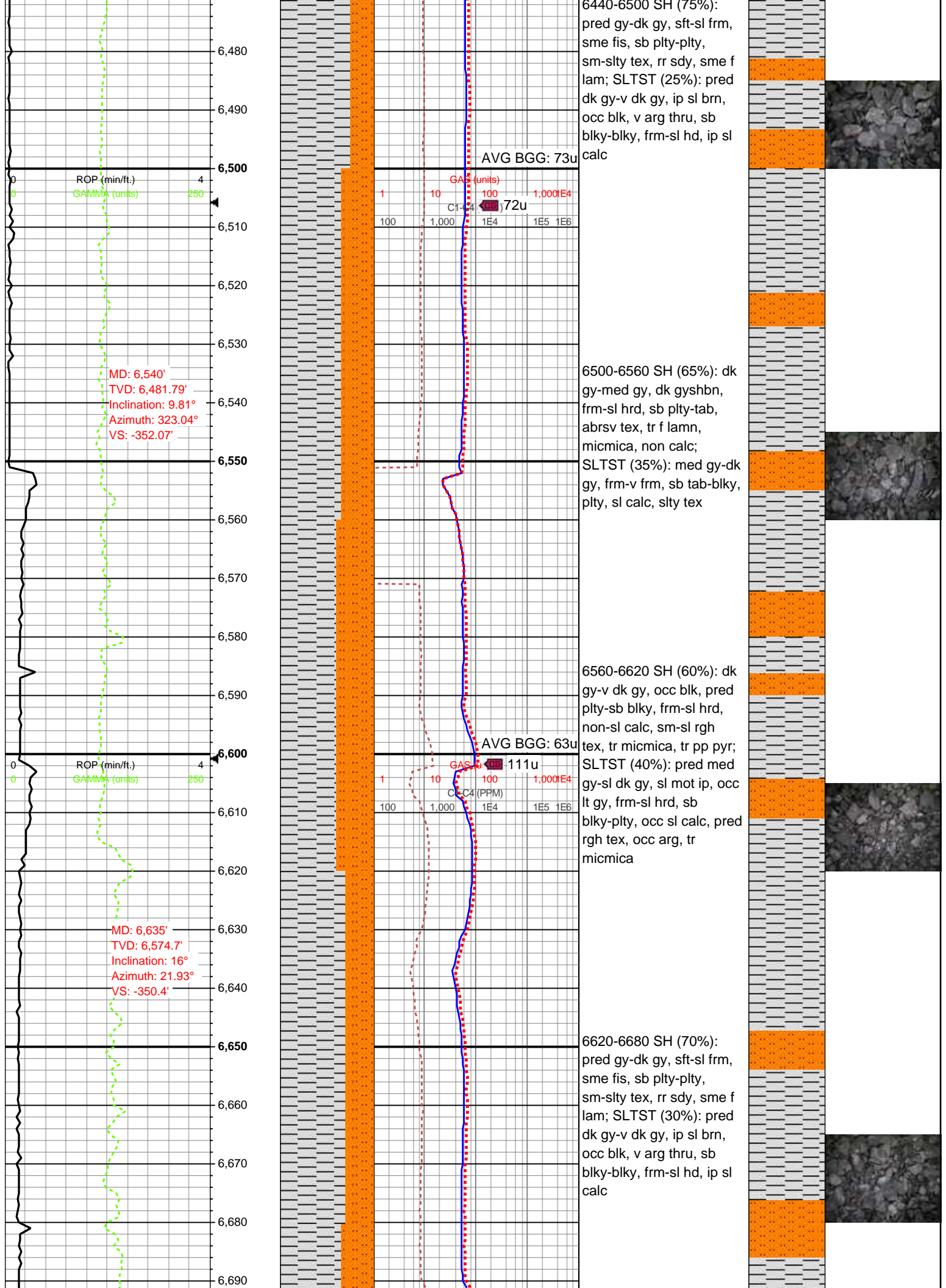
med gy-sl brn gy, grdg to ss, v arg, pred non calc  
6260-6320 SLTST (55%):  
pred med gy-dk gyshbn, frm-v frm, sb plty-blky, occ plty, tr micmica, sl-v sl cal, slty tex, tr-rr sdy; SH (40%): med gy-sl dk gy, frm, sb plty-plty, slty tex, micmica, tr f lam, non calc; SS (5%): lt gy-offwht, s&p, vf-f grnd, sb ang-ang, mod-w srtd, pre gr sup cls cons wi sil-arg cmt, tr-sl cal

6320-6380 SH (50%):  
pred med gy-dk gy, sl frm-hrd, sb blky-plty, sm-slty tex, sme f lamn, micmica; SLTST (50%):  
pred med gy-med brn, v arg thru, sb tab-blky, frm-sl hd, ip sl calc, slty-abrsv tex

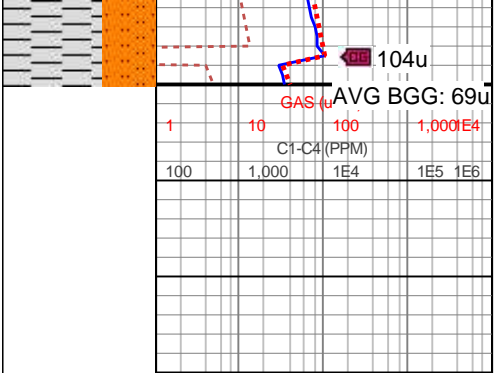
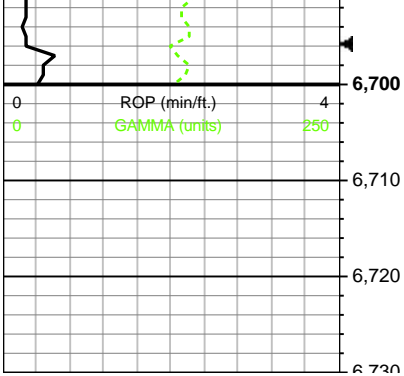
6380-6440 SH (60%):  
med gy-dk gy, gyshbn, frm-v frm, sb plty, sm-slty tex, pred non calc; SLTST (40%): gy-sl bnshgy, v arg, mnr sdy, pred non calc, splt-sb blky











Log Continued in  
horizontal Format

