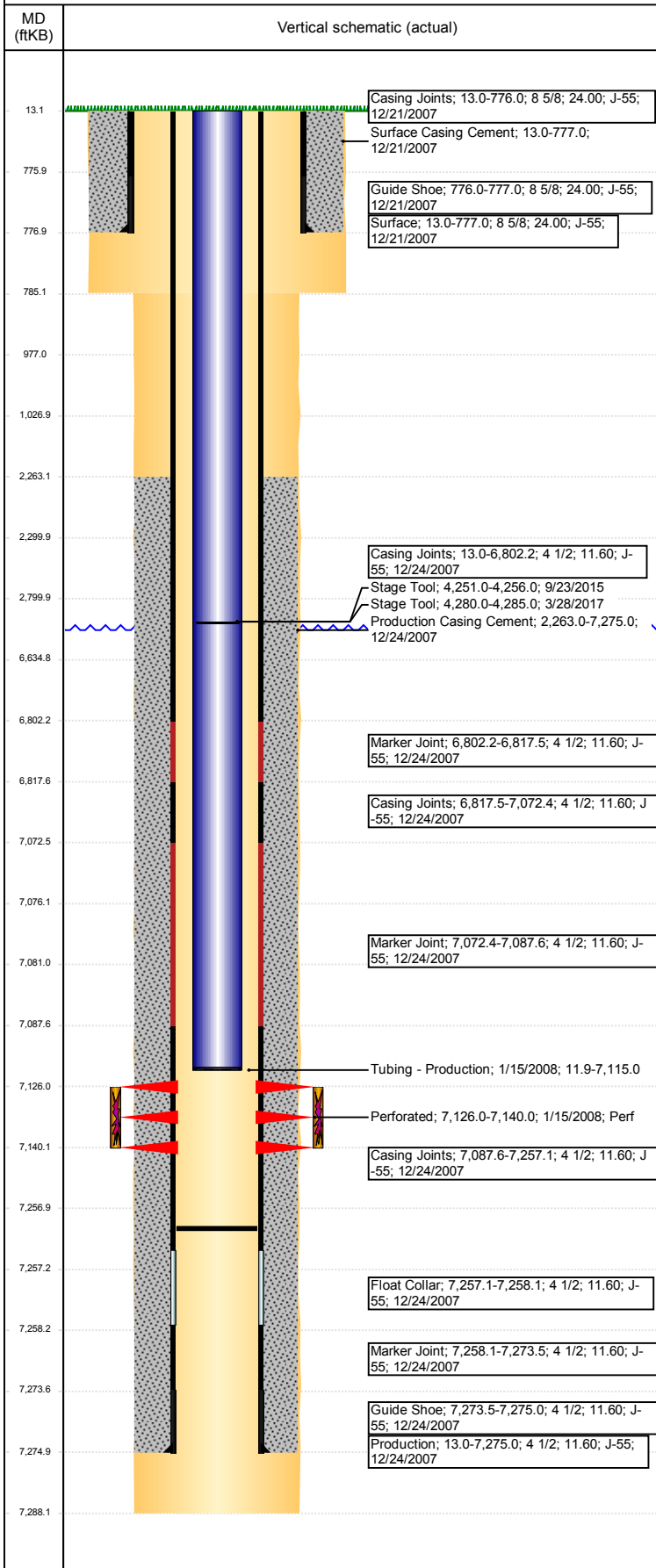


# Wellbore Schematic Input Report

**Well Name: BOOTH USX EE25-16**

VERTICAL - ORIGINAL HOLE, 9/7/2017 3:25:15 PM



Well Header								
API 05-123-26592		Business Unit DJ BASIN		District 15	Well Config VERTICAL			
Original KB Elevation (ft) 4,865		KB - GL / MSL (ftKB) 13.00		Spud Date 12/20/2007	P & A Date			
Comment								
Directions To Well From the intersection of WCR 76 and WCR 49, go West 1/10, then North 1/10 to location								
Congressional Location								
Quarter 3 SE	Quarter 4 SE	Section 25	Township 7	Twnshp N/S Dir N	Range 65	Range E/W Dir W		
Bottom Hole Location								
North-South Distance (ft)		From N or S Line		East-West Distance (ft)		From E or W Line		
Plug Back Total Depths								
Date	Depth (ftKB)	Method		Com				
12/25/2007	7,257.0	CASING TALLY						
Wellbore Sections								
Section Des		Size (in)	Act Top, MD (ftKB)		Act Btm, MD (ftKB)			
SURFACE		12 1/4	13		785			
PRODUCTION		7 7/8	785		7,288			
Zone Statuses								
Zone Name	Status Date	Status	Fluid Type	Job	Prod Method			
CODELL	2/5/2008	PR		DRILLING/CO...				
Casing Strings								
Surface, 777.0ftKB								
Casing Description Surface		Run Date 12/21/2007	OD (in) 8 5/8	Wt/Len (l... 24.00	Grade J-55	Top, MD (ft... 13.0	MD (ftKB) 777.0	
Production, 7,275.0ftKB								
Casing Description Production		Run Date 12/24/2007	OD (in) 4 1/2	Wt/Len (l... 11.60	Grade J-55	Top, MD (ft... 13.0	MD (ftKB) 7,275.0	
Cement								
Description Surface Casing Cement				Top Depth (ftKB) 13.0		Bottom Depth (ftKB) 777.0		
Description Production Casing Cement				Top Depth (ftKB) 2,263.0		Bottom Depth (ftKB) 7,275.0		
Description Balance Plug				Top Depth (ftKB) 2,300.0		Bottom Depth (ftKB) 2,800.0		
Description Balance Plug				Top Depth (ftKB) 977.0		Bottom Depth (ftKB) 1,027.0		
Description Balance Plug				Top Depth (ftKB) 13.0		Bottom Depth (ftKB) 977.0		
Description Cement Plug				Top Depth (ftKB) 6,635.0		Bottom Depth (ftKB) 7,076.0		
Tubing Strings								
Tubing Description Tubing - Production		Run Date 1/15/2008	String... 2 3/8	ID (in) 2.00	Wt (lb/ft) 4.70	Grade J-55	Len (ft) 7,103.10	Set De...
Other In Hole								
Run Date 8/17/2017		Des Cast Iron Bridge Plug			OD (in) 3.99	Top (ftKB) 7,076.0	Btm (ftKB) 7,081.0	
Logs								
Date		Type			Top, MD (ftKB)		Btm, MD (ftKB)	
12/24/2007		Caliper/Comp.Density/Neutron/GR/SP /ML			2,900.0		7,261.0	
12/24/2007		DIL/GR/SP/Caliper			777.0		7,281.0	
1/11/2008		CBL/CCL/GR			2,150.0		7,236.0	
Perforation Data								
Linked Zone		Bnch/St g	Sum of Entered Shot Total	Top (ftKB)	Btm (ftKB)		Date	
CODELL, ORIGINAL HOLE			56	7,126.00	7,140.00		1/15/2008	
Total (Sum)			56					

**Well Name: BOOTH USX EE25-16**

VERTICAL - ORIGINAL HOLE, 9/7/2017 3:25:15 PM

## Stimulation Intervals

Start Date 2/1/2008	Primary Job Type DRILLING/COMPLETION - ORIGINAL	
Technical Result Success	Tech Result Details According to Plan	Tech Result Note
Comment (CODELL) TREATMENT WENT WELL AD TO RUN 0.1 PSA HEAVY FOR THE 1psa - 3 PSA STAGES DUE TO BEING TIGHT ON WATER		

