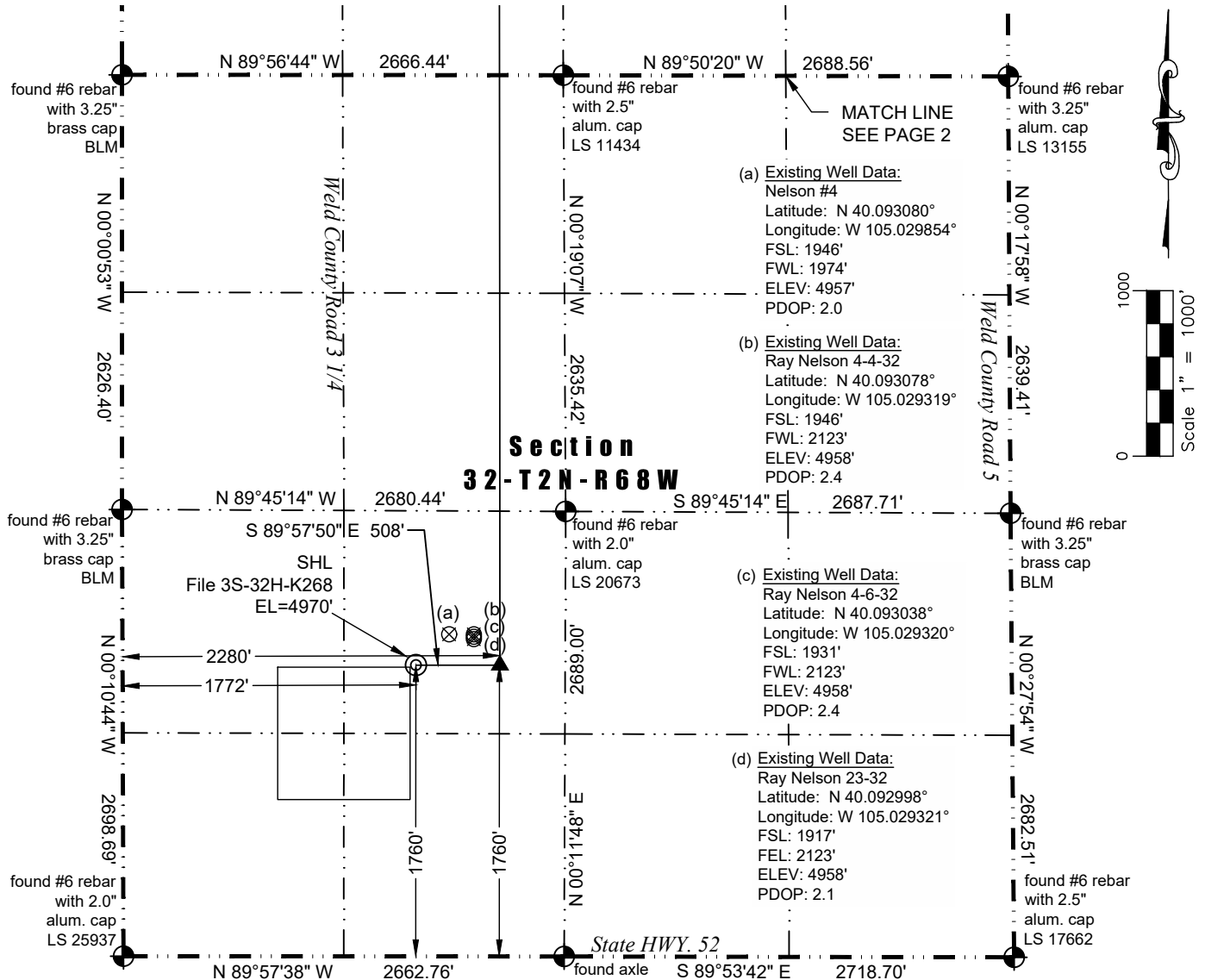


# WELL LOCATION CERTIFICATE



In accordance with a request from Jay Knutson of Crestone Peak Resources, Washburn Land Surveying, LLC has determined the location of the **File 3S-32H-K268** well site to be SHL: 1760' FSL and 1772' FWL, (TPZ: 1760' FSL and 2280' FWL), (BHL: 2180' FSL and 2280' FWL), as measured at ninety (90) degrees from the section lines of Sections 20 and 32, Township 2 North, Range 68 West of the 6th Principal Meridian, Weld County Colorado.

## Proposed Well Data:

Latitude: N 40.092573° (TPZ: N 40.092565°) (BHL: N 40.122858°)  
 Longitude: W 105.030574° (TPZ: W 105.028760°) (BHL: W 105.028577°)  
 PDOP: 1.6

## Nearest:

Building: 628' southwest  
 Building Unit: 580' southwest  
 Public Road: 450' west  
 Property Line: 435' west  
 Existing Well: Nelson #4, 273' northeast

Above Ground Utility: 429' west  
 Railroad: +5280'  
 Well Window: SHL is 38' outside  
 High Occupancy Building Unit: +5280'  
 Designated Outside Activity Area: +5280'

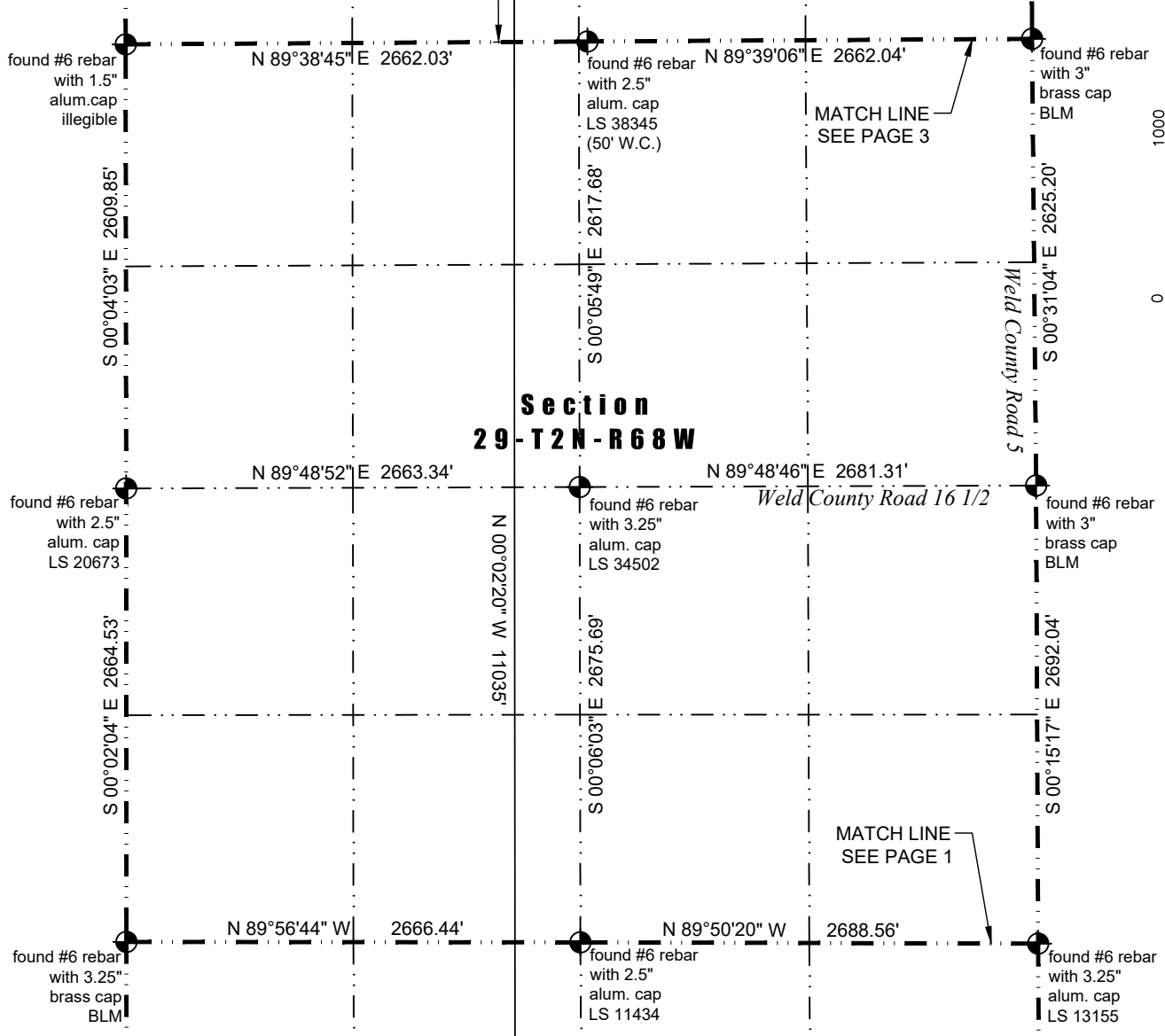
## Notes:

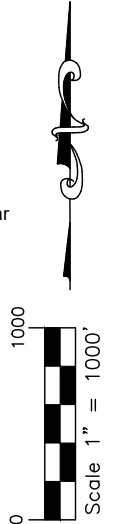
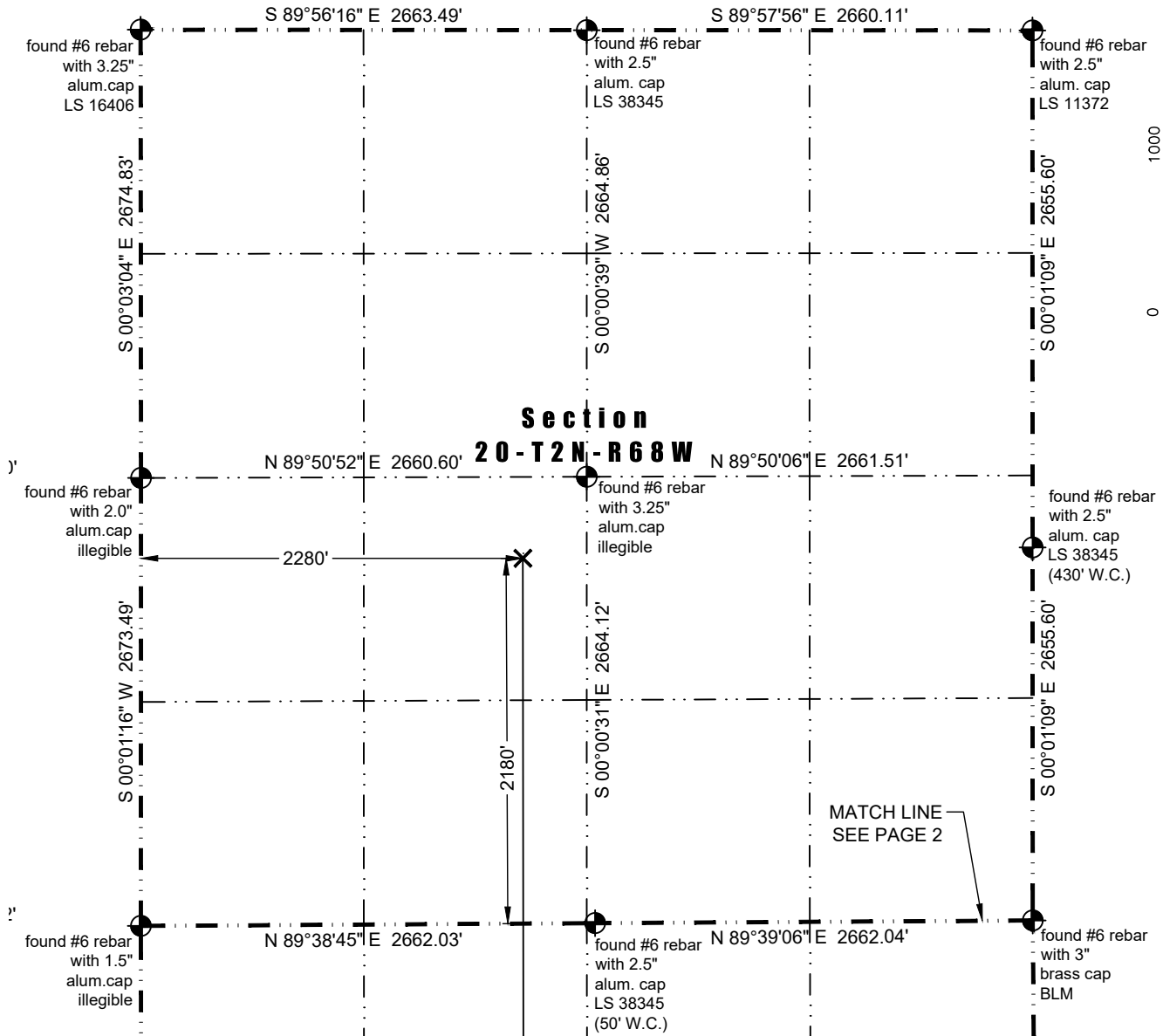
- 1) Bearings and distances based on NAD 83 Colorado North State Plane Coordinate, using RTK GPS observations taken 5/14/15 by operator Jason Dahlman.
- 2) Conversion factor to ground (1.0002793972).
- 3) Elevations based on NAVD 88 GPS heights and Geoid 2009 corrections.
- 4) See Location Drawing for visible improvements within 500 feet of Pad Site.
- 5) The surface use is a cultivated field.

**NOTICE:** According to Colorado law you must commence any legal action based upon any defect in this W.L.C. within three years after you first discover such defect. In no event may any action based upon any defect in this W.L.C. be commenced more than ten years from this said date of the certification shown hereon.

I hereby certify that this Well Location Certificate was prepared by me or under my direct supervision on 6/13/2017 for and on behalf of Crestone Peak Resources. That it is not a Land Survey Plat or an Improvement Survey Plat and that it is not to be relied upon for establishment of fences, buildings or other future improvement lines.

John Robert McGehee LS#38219  
 Well: File 3S-32H-K268 WLC





## LEGEND

- ⊗ - Existing Well
- ⊕ - Found Survey Monument
- ⊙ - Calculated Location
- ⊙ - Surface Hole Location (SHL)
- ▲ - Top of Producing Zone (TPZ)
- ✕ - Bottom Hole Location (BHL)