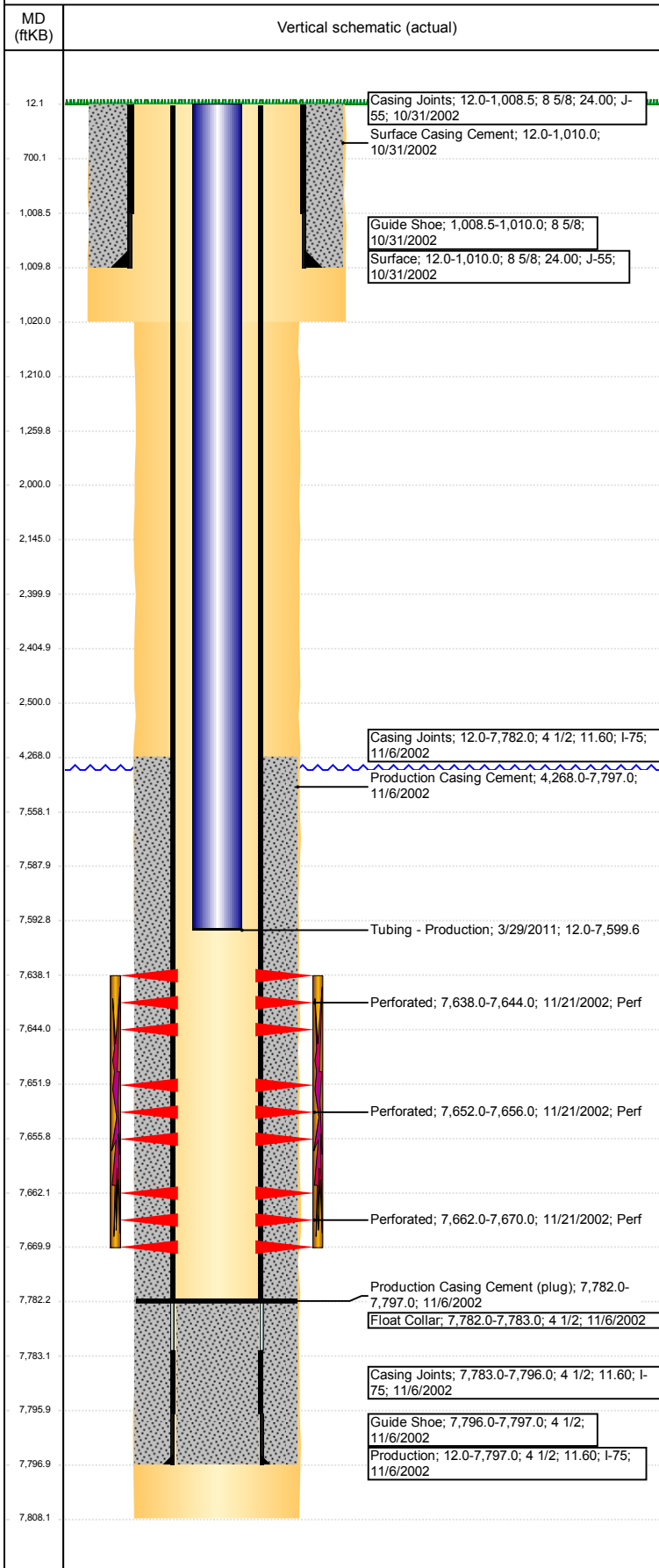


**Well Name: DECHANT 12-19**

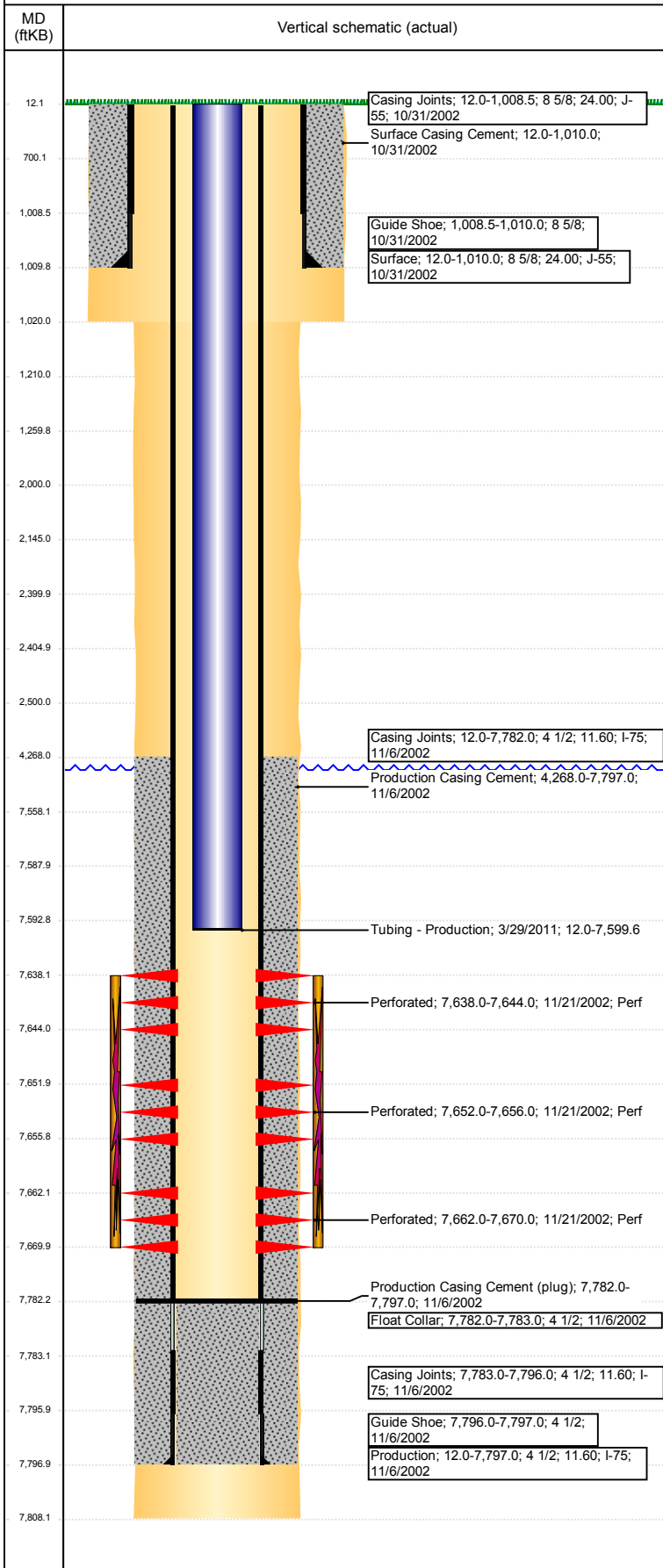
VERTICAL - ORIGINAL HOLE, 9/7/2017 8:55:26 AM



Well Header							
API 05-123-21167	Business Unit DJ BASIN	District 15	Well Config VERTICAL				
Original KB Elevation (ft) 4,959	KB - GL / MSL (ftKB) 12.00	Spud Date 10/30/2002	P & A Date				
Comment WELLHEAD IS 3000#/W/H HAS BEEN CHANGED TO 5000K							
Directions To Well WCR 49 & WCR 18, N 1/4, E 1/8 INTO							
Congressional Location							
Quarter 3 NW	Quarter 4 SW	Section 19	Township 2	Twnshp N/S Dir N	Range 64	Range E/W Dir W	
Bottom Hole Location							
North-South Distance (ft)		From N or S Line		East-West Distance (ft)		From E or W Line	
Plug Back Total Depths							
Date	Depth (ftKB)	Method		Com			
11/6/2002	7,782.0	CASING TALLY		TOP OF FLOAT COLLAR			
11/12/2002	7,784.0	CASED HOLE LOG		DEPTH LOGGER ON CBL			
12/5/2002	7,776.0	TAG		CLEAN OUT FILL			
10/17/2008	7,782.0	TAG		CLEAN OUT FILL			
Wellbore Sections							
Section Des		Size (in)		Act Top, MD (ftKB)		Act Btm, MD (ftKB)	
SURFACE		12 1/4		12		1,020	
PRODUCTION		7 7/8		1020		7,808	
Zone Statuses							
Zone Name	Status Date	Status	Fluid Type	Job	Prod Method		
J SAND	12/11/2002	PR	Water	DRILLING/CO...	Flowing		
J SAND	4/22/2014	PR					
J SAND	5/9/2017	SI					
Casing Strings							
Surface, 1,010.0ftKB							
Casing Description	Run Date	OD (in)	Wt/Len (l...	Grade	Top, MD (ft...	MD (ftKB)	
Surface	10/31/2002	8 5/8	24.00	J-55	12.0	1,010.0	
Production, 7,797.0ftKB							
Casing Description	Run Date	OD (in)	Wt/Len (l...	Grade	Top, MD (ft...	MD (ftKB)	
Production	11/6/2002	4 1/2	11.60	I-75	12.0	7,797.0	
Cement							
Description				Top Depth (ftKB)		Bottom Depth (ftKB)	
Surface Casing Cement				12.0		1,010.0	
Description				Top Depth (ftKB)		Bottom Depth (ftKB)	
Production Casing Cement				4,268.0		7,797.0	
Description				Top Depth (ftKB)		Bottom Depth (ftKB)	
Dump Bail				7,558.0		7,588.0	
Description				Top Depth (ftKB)		Bottom Depth (ftKB)	
Casing Repair Cement				2,000.0		2,500.0	
Description				Top Depth (ftKB)		Bottom Depth (ftKB)	
Cement Plug				2,145.0		2,400.0	
Description				Top Depth (ftKB)		Bottom Depth (ftKB)	
Cement Plug				2,405.0		2,500.0	
Description				Top Depth (ftKB)		Bottom Depth (ftKB)	
Cement Plug				1,210.0		1,260.0	
Description				Top Depth (ftKB)		Bottom Depth (ftKB)	
Cement Plug				1,010.0		1,020.0	
Description				Top Depth (ftKB)		Bottom Depth (ftKB)	
Cement Plug				1,020.0		1,210.0	
Description				Top Depth (ftKB)		Bottom Depth (ftKB)	
Cement Plug				700.0		1,010.0	
Description				Top Depth (ftKB)		Bottom Depth (ftKB)	
Shoe Plug				12.0		700.0	
Tubing Strings							
Tubing Description	Run Date	String...	ID (in)	Wt (lb/ft)	Grade	Len (ft)	Set De...
PRODUCTION TUBING	12/5/2002	2 3/8			J55	7,580.99	
Tubing Description	Run Date	String...	ID (in)	Wt (lb/ft)	Grade	Len (ft)	Set De...
PRODUCTION TUBING	10/17/2008	2 3/8		4.70	J55	7,594.01	
Tubing Description	Run Date	String...	ID (in)	Wt (lb/ft)	Grade	Len (ft)	Set De...
Tubing - Production	3/29/2011	2 3/8	2.00	4.70	J-55	7,587.61	

**Well Name: DECHANT 12-19**

VERTICAL - ORIGINAL HOLE, 9/7/2017 8:55:26 AM



Other In Hole				
Run Date	Des	OD (in)	Top (ftKB)	Btm (ftKB)
8/30/2017	Cement Retainer	4	2,400.0	2,405.0
	Cast Iron Bridge Plug	4	7,588.0	7,593.0

Logs				
Date	Type	Top, MD (ftKB)	Btm, MD (ftKB)	
11/6/2002	COMPENSATED DENSITY	4,350.0	7,781.0	
11/6/2002	INDUCTION	1,010.0	7,801.0	
11/12/2002	CBL/CCL/GR	4,101.0	7,778.0	

Perforation Data					
Linked Zone	Bnch/St g	Sum of Entered Shot Total	Top (ftKB)	Btm (ftKB)	Date
J SAND, ORIGINAL HOLE		0	2,500.00	2,500.00	8/30/2017
J SAND, ORIGINAL HOLE		18	7,638.00	7,644.00	11/21/2002
J SAND, ORIGINAL HOLE		12	7,652.00	7,656.00	11/21/2002
J SAND, ORIGINAL HOLE		24	7,662.00	7,670.00	11/21/2002
<b>Total (Sum)</b>		<b>54</b>			

Stimulation Intervals		
Start Date	Primary Job Type	
11/25/2002	DRILLING/COMPLETION - ORIGINAL	
Technical Result	Tech Result Details	Tech Result Note
Success		
Comment		
J SAND NEW DRILL		