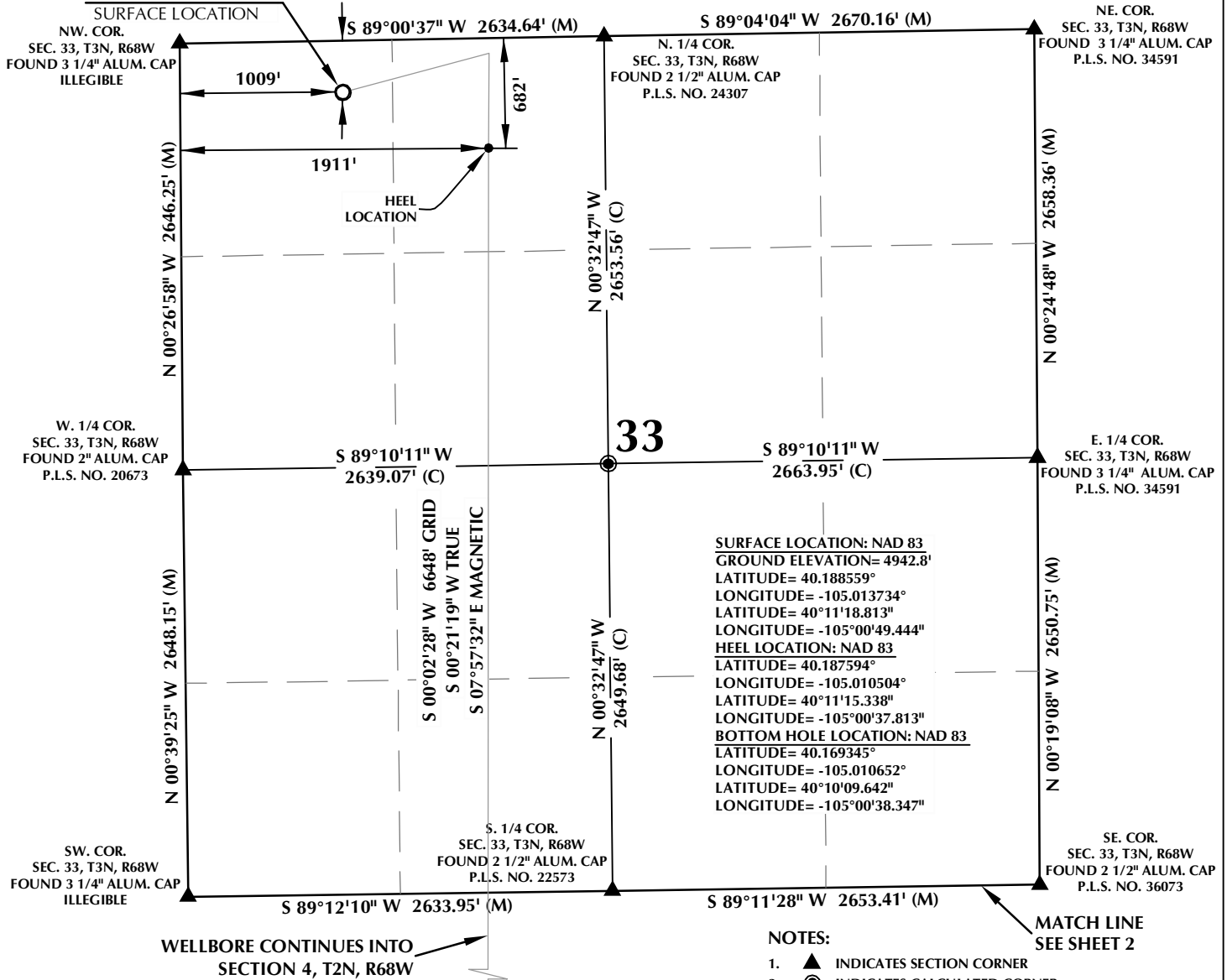


HERGENREDER  
6N-4HZ

T3N, R68W



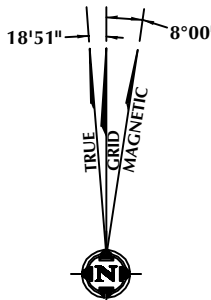
**CERTIFICATE OF SURVEYOR:**

THIS IS TO CERTIFY THAT THE ABOVE PLAT WAS PREPARED FROM FIELD NOTES OF ACTUAL SURVEY MADE BY ME OR UNDER MY SUPERVISION AND THAT THE SAME ARE TRUE AND CORRECT TO THE BEST OF MY KNOWLEDGE AND BELIEF. THIS CERTIFICATE DOES NOT REPRESENT A LAND SURVEY PLAT OR IMPROVEMENT SURVEY PLAT AS DEFINED BY C.S. 38-51-102 AND CANNOT BE RELIED UPON TO DETERMINE OWNERSHIP.

*Randall K. French*  
38512  
PROFESSIONAL LAND SURVEYOR  
6/27/17  
RANDALL K. FRENCH  
PROFESSIONAL LAND SURVEYOR  
COLORADO REGISTRATION NUMBER 38512

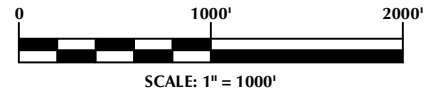
NOTICE:  
ACCORDING TO COLORADO STATE LAW YOU MUST COMMENCE LEGAL ACTION BASED UPON ANY DEFECT IN THIS SURVEY WITHIN THREE YEARS AFTER YOU FIRST DISCOVER SUCH DEFECT. IN NO EVENT MAY ANY ACTION BASED UPON ANY DEFECT IN THIS SURVEY BE COMMENCED MORE THAN TEN YEARS FROM THE DATE ON THE CERTIFICATION SHOWN HEREON.

NOTE:  
MAGNETIC NORTH IS CURRENT AS OF 6/23/2017.  
MAGNETIC NORTH CHANGES WEST 0°06' PER YEAR.



**NOTES:**

1. ▲ INDICATES SECTION CORNER
2. ● INDICATES CALCULATED CORNER
3. ELEVATION BASED ON NAVD88 (GEOID12A)
4. BASIS OF BEARING DERIVED FROM COLORADO COORDINATE SYSTEM OF 2983 NORTH ZONE.
5. ALL MEASURED DISTANCES ARE GRID. COMBINED SCALE FACTOR: .99972556 CALCULATED FROM THE W. 1/4 CORNER OF SECTION 4, T2N, R68W
6. OPERATOR: ROB WILSON / PDOP = 1.4
7. SEE ADDENDUM TO WELL LOCATION CERTIFICATE FOR EXISTING IMPROVEMENTS WITHIN 500' OF THE WELL PAD.
8. WELL FOOTAGES ARE MEASURED AT RIGHT ANGLES TO THE SECTION LINES.
9. THE BOTTOM OF HOLE BEARS S00°02'28"W, 6648' FROM THE HEEL LOCATION.



**WELL PAD - HERGENREDER 22N2-4HZ**

HERGENREDER 6N-4HZ  
WELL LOCATION CERTIFICATE  
320' FNL & 1009' FWL NWNW (SURFACE)  
682' FNL & 1911' FWL NENW (HEEL)  
LOCATED IN SECTION 33  
T3N, R68W, 6TH P.M.  
2028' FNL & 1887' FWL LOT 1 (SENW) (BOTTOM)  
LOCATED IN SECTION 4  
T2N, R68W, 6TH P.M.  
WELD COUNTY, COLORADO

**Kerr-McGee Oil &  
Gas Onshore L.P.**  
1099 18th Street  
Denver, Colorado 80202



**CONSULTING, LLC**

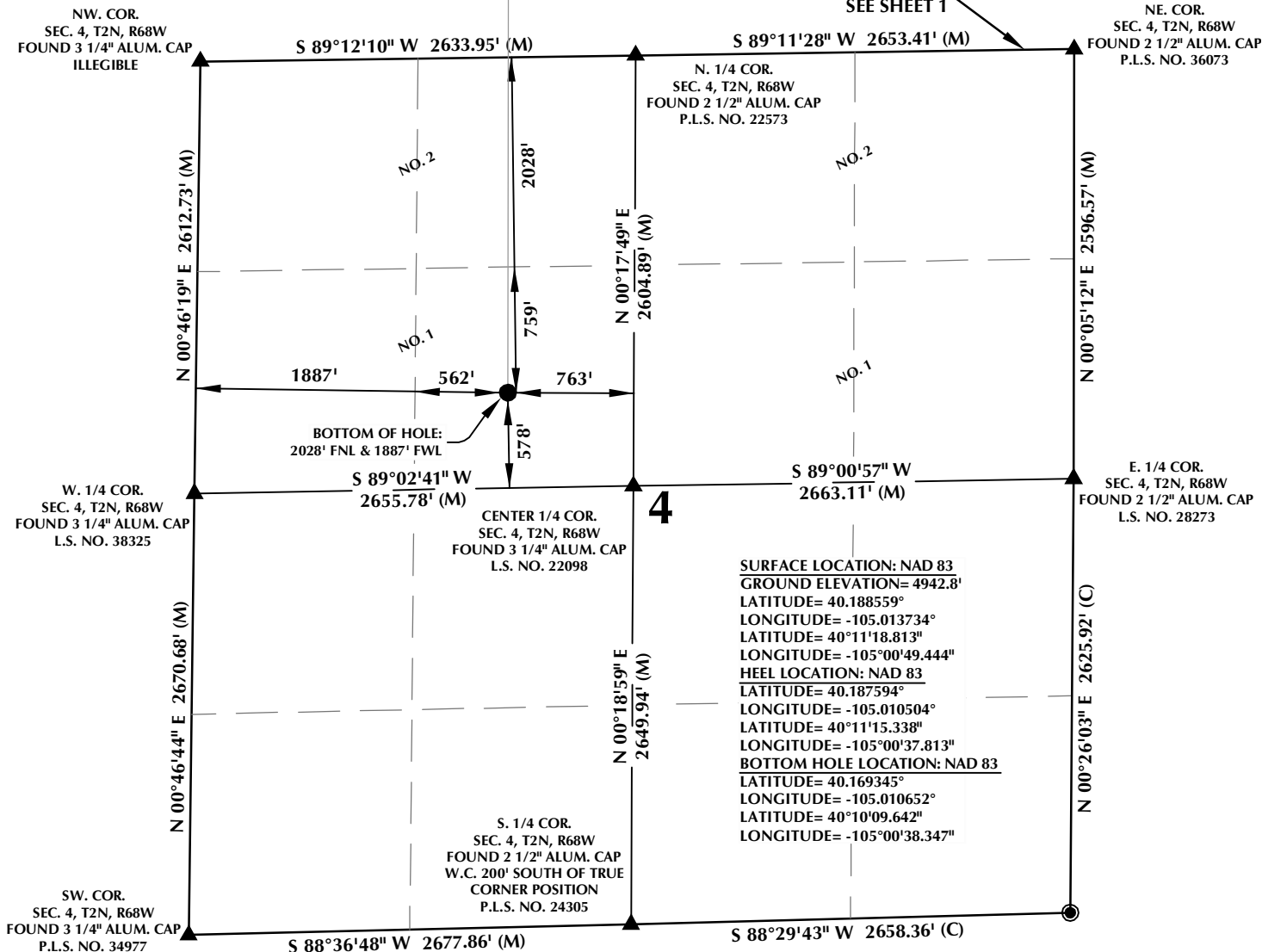
SHERIDAN OFFICE  
1095 Saberton Avenue  
Sheridan, Wyoming 82801  
Phone 307-674-0609

LOVELAND OFFICE  
1635 Foxtrail Drive, Suite 204  
Loveland, Colorado 80538  
Phone 970-776-4331

DRAFTED BY:	LMO	CHECKED BY:	RKF	SHEET NO:
DATE DRAFTED:	9/25/15	DATE SURVEYED:	2/21/17	1
REVISED:	6/27/17	FILE NAME:	15-68	1 OF 2

T2N, R68W

MATCH LINE  
SEE SHEET 1



SURFACE LOCATION: NAD 83  
GROUND ELEVATION= 4942.8'  
LATITUDE= 40.188559°  
LONGITUDE= -105.013734°  
LATITUDE= 40°11'18.813"  
LONGITUDE= -105°00'49.444"  
HEEL LOCATION: NAD 83  
LATITUDE= 40.187594°  
LONGITUDE= -105.010504°  
LATITUDE= 40°11'15.338"  
LONGITUDE= -105°00'37.813"  
BOTTOM HOLE LOCATION: NAD 83  
LATITUDE= 40.169345°  
LONGITUDE= -105.010652°  
LATITUDE= 40°10'09.642"  
LONGITUDE= -105°00'38.347"

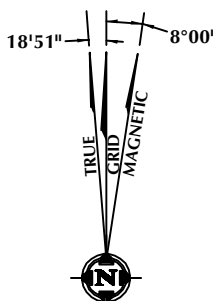
#### CERTIFICATE OF SURVEYOR:

THIS IS TO CERTIFY THAT THE ABOVE PLAT WAS PREPARED FROM FIELD NOTES OF ACTUAL SURVEY MADE BY ME OR UNDER MY SUPERVISION AND THAT THE SAME ARE TRUE AND CORRECT TO THE BEST OF MY KNOWLEDGE AND BELIEF. THIS CERTIFICATE DOES NOT REPRESENT A LAND SURVEY PLAT OR IMPROVEMENT SURVEY PLAT AS DEFINED BY C.R.S. § 38-51-102 AND CANNOT BE RELIED UPON TO DETERMINE OWNERSHIP.

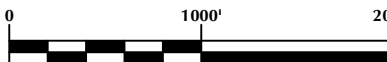
*Randall K. French*  
38512  
PROFESSIONAL LAND SURVEYOR

RANDALL K. FRENCH  
PROFESSIONAL LAND SURVEYOR  
COLORADO REGISTRATION NUMBER 38512

NOTICE:  
ACCORDING TO COLORADO STATE LAW YOU MUST COMMENCE ADOPTED ACTION BASED UPON ANY DEFECT IN THIS SURVEY WITHIN THREE YEARS AFTER YOU FIRST DISCOVER SUCH DEFECT. IN NO EVENT MAY ANY ACTION BASED UPON ANY DEFECT IN THIS SURVEY BE COMMENCED MORE THAN TEN YEARS FROM THE DATE ON THE CERTIFICATION SHOWN HEREON.



NOTE:  
MAGNETIC NORTH IS CURRENT AS OF 6/23/2017.  
MAGNETIC NORTH CHANGES WEST 0°06' PER YEAR.



SCALE: 1" = 1000'

#### NOTES:

- ▲ INDICATES SECTION CORNER
- INDICATES CALCULATED CORNER
- ELEVATION BASED ON NAVD88 (GEOID12A)
- BASIS OF BEARING DERIVED FROM COLORADO COORDINATE SYSTEM OF 1983 NORTH ZONE.
- ALL MEASURED DISTANCES ARE GRID.  
COMBINED SCALE FACTOR: .99972556 CALCULATED FROM THE W. 1/4 CORNER OF SECTION 4, T2N, R68W
- OPERATOR: ROB WILSON / PDOP = 1.4
- SEE ADDENDUM TO WELL LOCATION CERTIFICATE FOR EXISTING IMPROVEMENTS WITHIN 500' OF THE WELL PAD.
- WELL FOOTAGES ARE MEASURED AT RIGHT ANGLES TO THE SECTION LINES.
- THE BOTTOM OF HOLE BEARS S00°02'28"W, 6648' FROM THE HEEL LOCATION.
- NO. 1 & NO. 2 AS SHOWN HEREON ARE GOVERNMENT LOTS 1 & 2 PER THE ORIGINAL GLO SURVEY

#### WELL PAD - HERGENREDER 22N2-4HZ

HERGENREDER 6N-4HZ  
WELL LOCATION CERTIFICATE  
320' FNL & 1009' FWL NWNW (SURFACE)  
682' FNL & 1911' FWL NENW (HEEL)  
LOCATED IN SECTION 33  
T3N, R68W, 6TH P.M.  
2028' FNL & 1887' FWL LOT 1 (SENW) (BOTTOM)  
LOCATED IN SECTION 4  
T2N, R68W, 6TH P.M.  
WELD COUNTY, COLORADO

Kerr-McGee Oil &  
Gas Onshore L.P.  
1099 18th Street  
Denver, Colorado 80202



#### CONSULTING, LLC

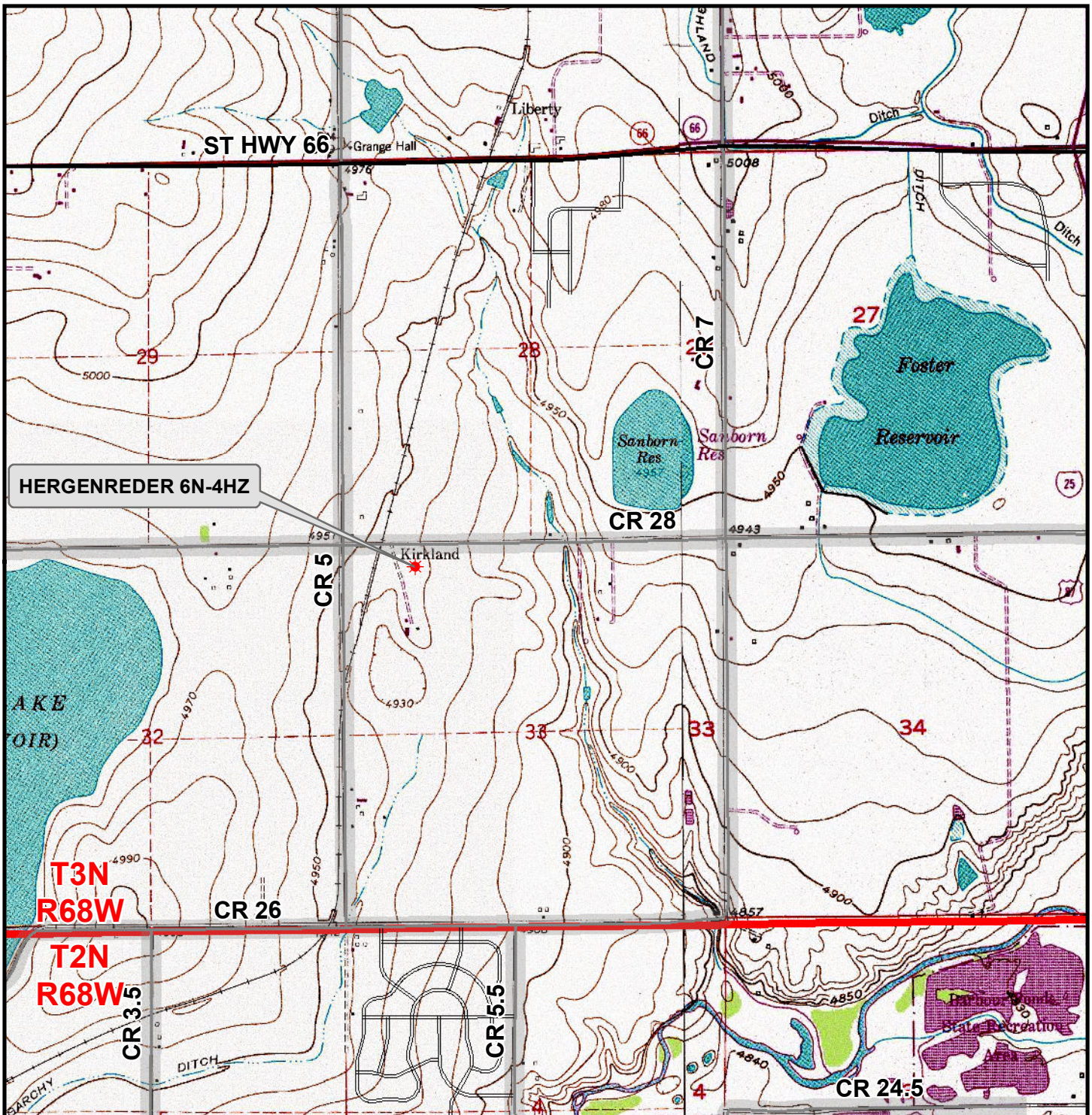
SHERIDAN OFFICE  
1095 Saberton Avenue  
Sheridan, Wyoming 82801  
Phone 307-674-0609

LOVELAND OFFICE  
1635 Foxtrail Drive, Suite 204  
Loveland, Colorado 80538  
Phone 970-776-4331

DRAFTED BY:	LMO	CHECKED BY:	RKF	SHEET NO:
DATE DRAFTED:	9/25/15	DATE SURVEYED:	2/21/17	2
REVISED:	6/27/17	FILE NAME:	15-68	2 OF 2



K:\ANADARKO\2015\2015\_68\_HERGENREDER\_T3N\_68W\_33\GIS\Maps\_ABC\HERGENREDER\_25N-4HZ\HERGENREDER\_6N-4HZ.mxd 6/28/2017 2:57:48 PM



### Legend

- ★ Well - Fee - Proposed    === Road - Primitive - Existing    — Road - County - Existing  
—— Road - Improved - Existing    — Road - Highway - Existing

WELL PAD - HERGENREDER 22N2-4HZ

**GENERAL LOCATION MAP  
HERGENREDER 6N-4HZ  
LOCATED IN SECTION 33  
T3N, R68W, 6th P.M.  
WELD COUNTY, COLORADO**

**Kerr-McGee Oil &  
Gas Onshore L.P.**

1099 18th Street  
Denver, Colorado 80202



**CONSULTING, LLC**

SHERIDAN OFFICE  
2155 North Main Street  
Sheridan, Wyoming 82801  
Phone 307-674-0609

LOVELAND OFFICE  
1635 Foxtail Drive, Suite 204  
Loveland, Colorado 80538  
Phone 970-776-4331



SCALE: 1" = 2,000ft

NAD83 CO-Nft

DRAWN: SP

DATE: 27 Jun 2017

REVISED:

DATE: