



Radial Cement
Gamma Ray
CCL Log

Company Chevron		Company Chevron		Company Chevron	
Pad		Well Fee-6		Pad	
Field Rangley		Field Rangley		Field	
County Rio Blanco		County Rio Blanco		County	
State Co		State Co		State Co	
Location:		API # :		Other Services	
SEC		TWP		RGE	
Permanent Datum		Ground Level		Elevation 5318'	
Log Measured From KB		KB		Elevation K.B. 5330'	
Drilling Measured From KB		KB		Elevation D.F. 5329'	
Date		05-Sept-2017		G.L. 5318'	
Run Number		One			
Depth Driller					
Depth Logger		1990'			
Bottom Logged Interval		1990'			
Top Log Interval		Surface			
Open Hole Size		9.875			
Type Fluid		Water			
Density / Viscosity		107.8 Deg F			
Max. Recorded Temp.					
Estimated Cement Top					
Time Well Ready					
Time Logger on Bottom		17:45			
Equipment Number		110			
Location		Vernal			
Recorded By		Eric Atwood			
Witnessed By		Terry Moore			
Run Number		Borehole Record		Tubing Record	
Bit		From		To	
Size		To		Size	
Wgt/Ft		Weight		From	
Top		Bottom		To	
Surface String		10.75"		40.5#	
Prot. String		7"		23#	
Production String				Surface	
Liner				5960'	

<<< Fold Here >>>

All interpretations are opinions based on inferences from electrical or other measurements and we cannot and do not guarantee the accuracy or correctness of any interpretation, and we shall not, except in the case of gross or willful negligence on our part, be liable or responsible for any loss, costs, damages, or expenses incurred or sustained by anyone resulting from any interpretation made by any of our officers, agents or employees. These interpretations are also subject to our general terms and conditions set out in our current Price Schedule.

Comments

Log Correlated To Surface

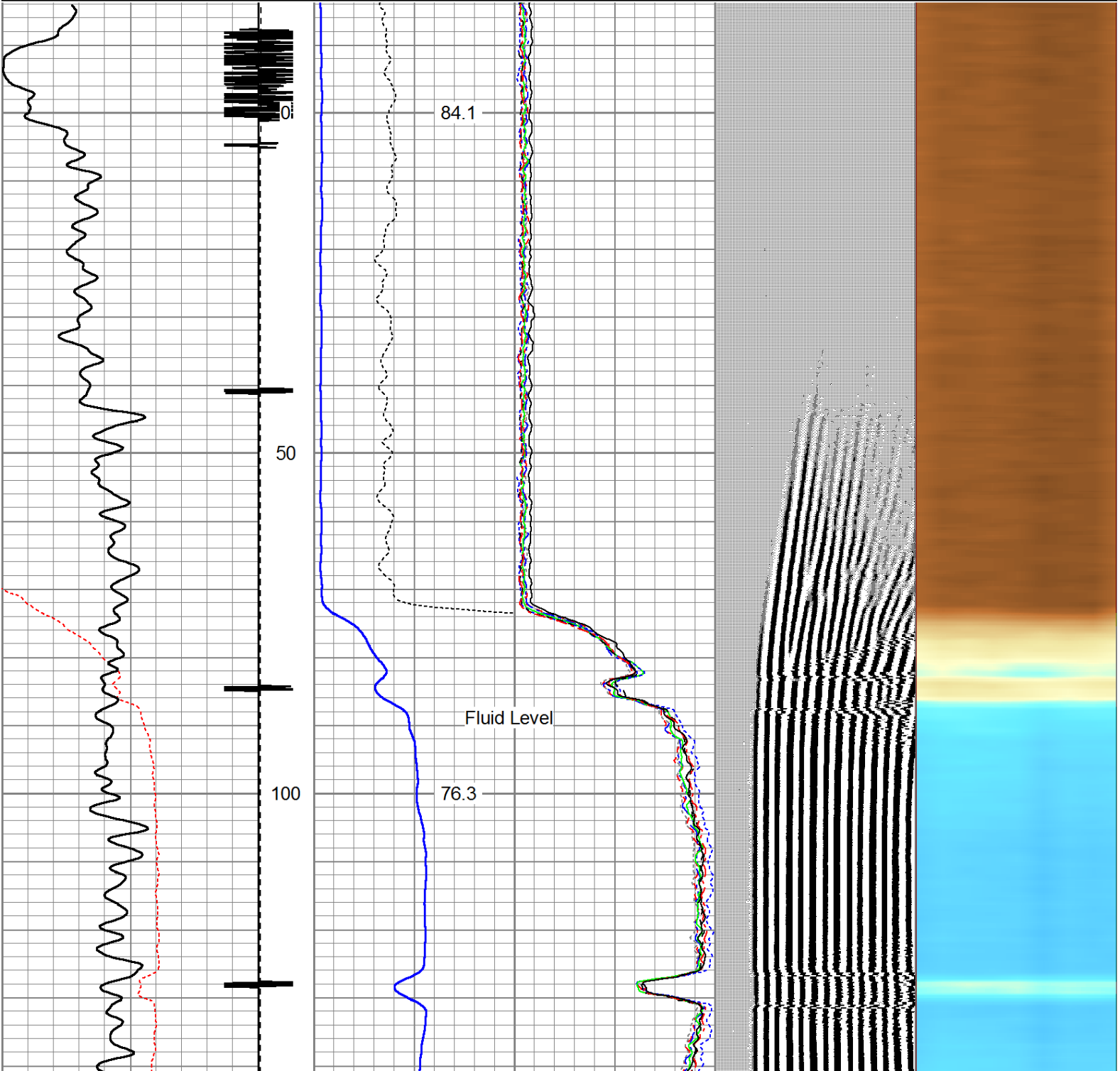


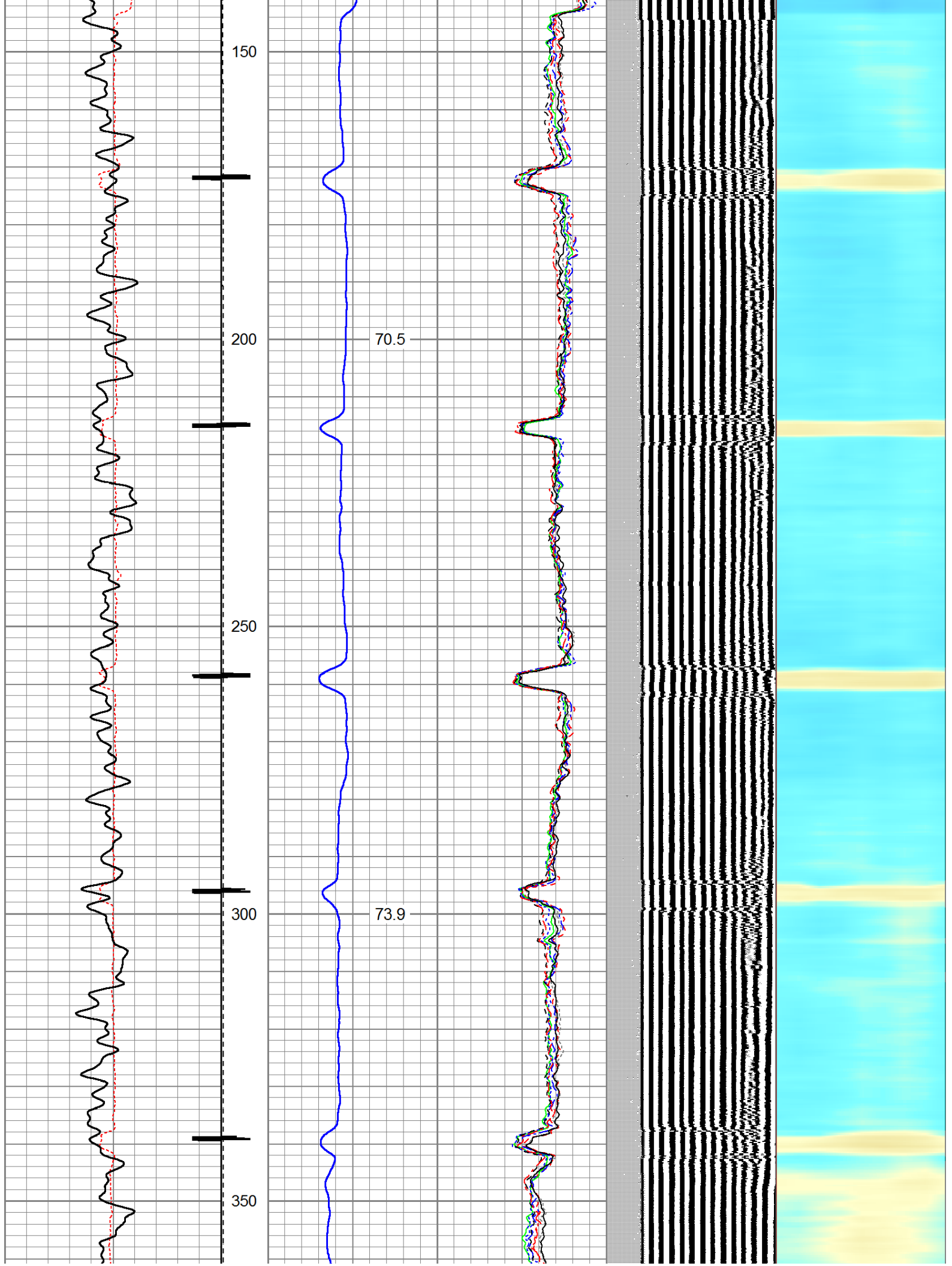
Main Pass

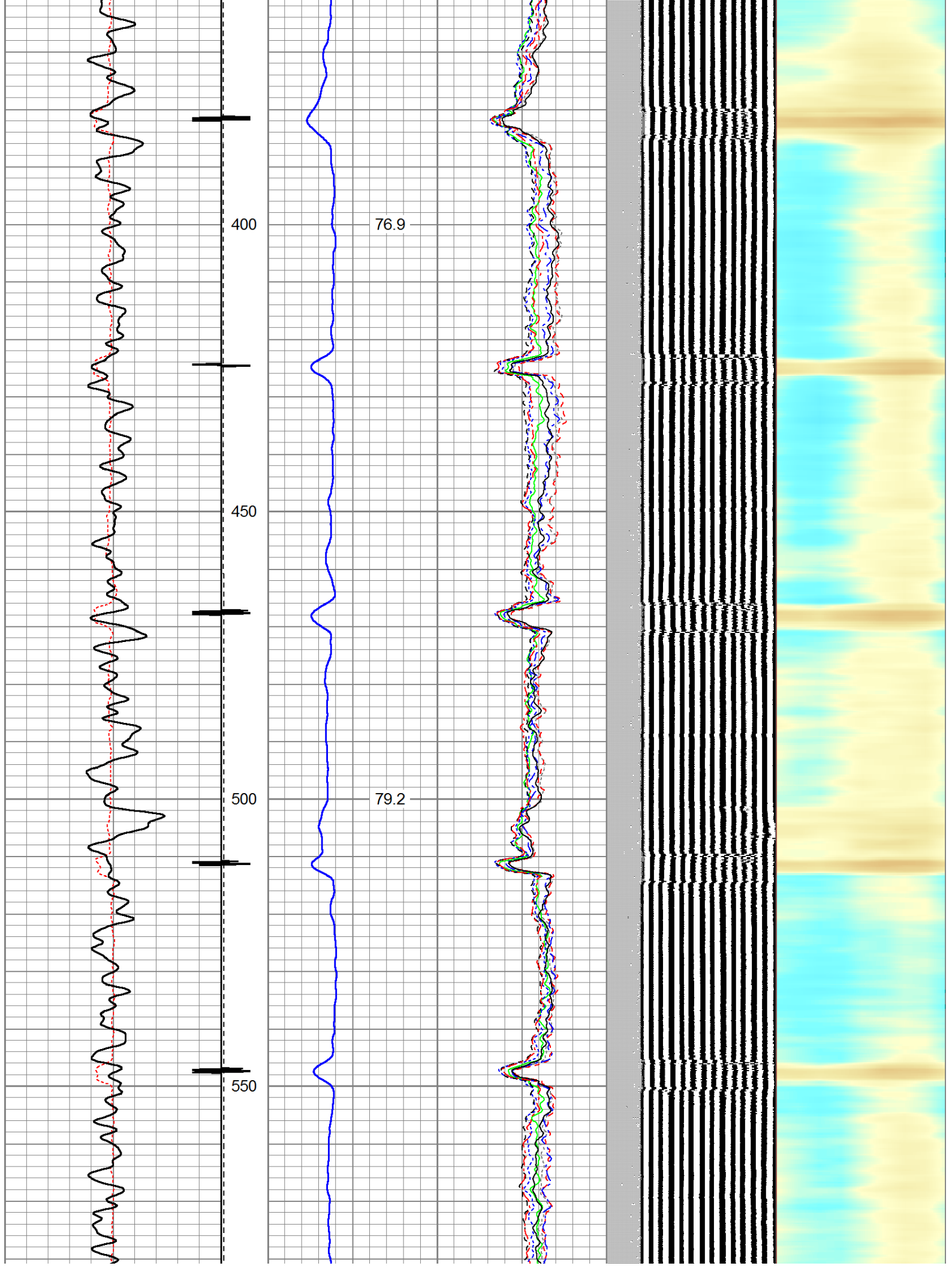
Loaded With 0 PSI Surface Pressure

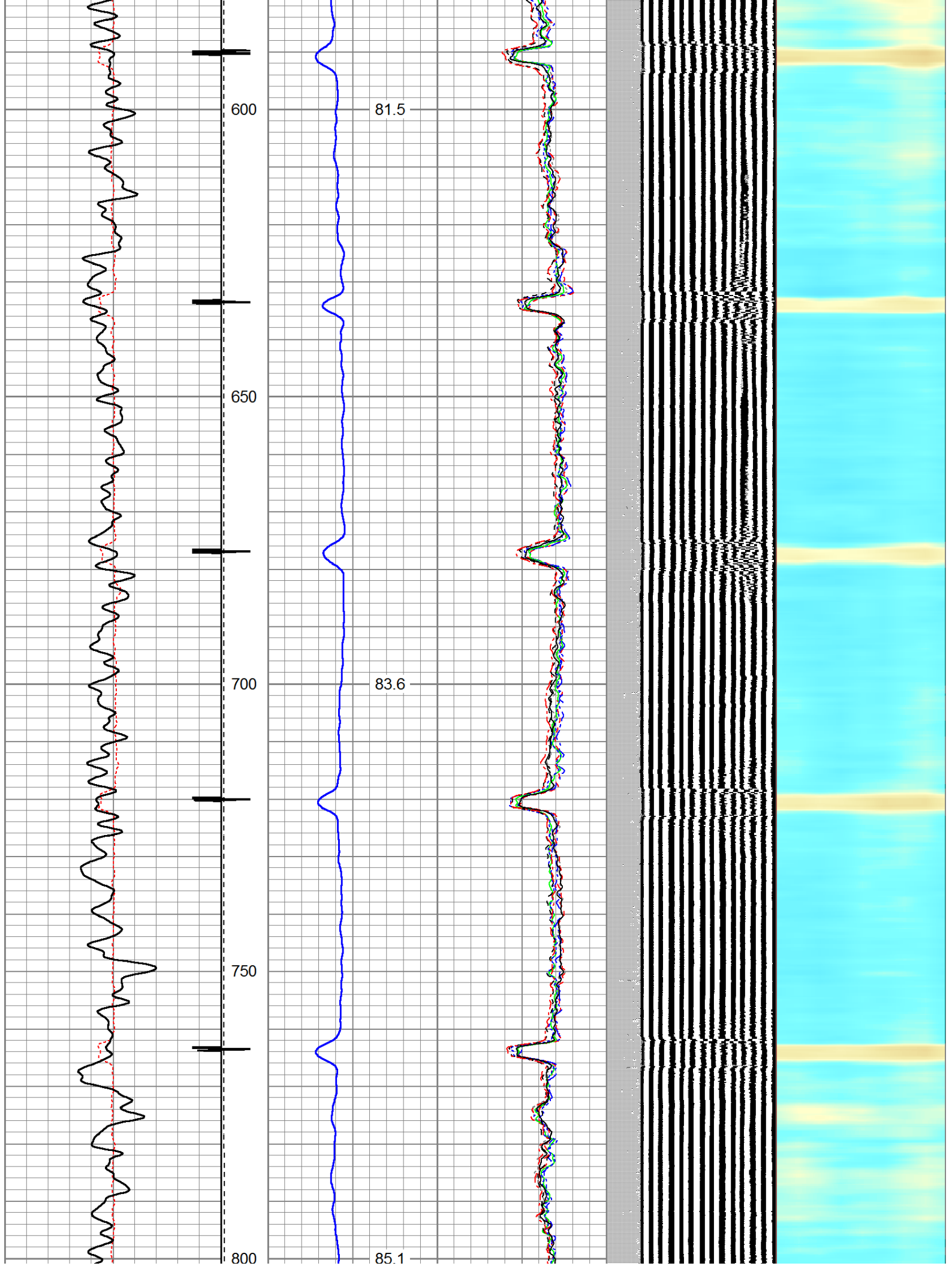
Database File: fee-6.db
Dataset Pathname: merge1.2
Presentation Format: rbl55
Dataset Creation: Tue Sep 05 18:26:46 2017 by Calc 7.0 B1
Charted by: Depth in Feet scaled 1:240

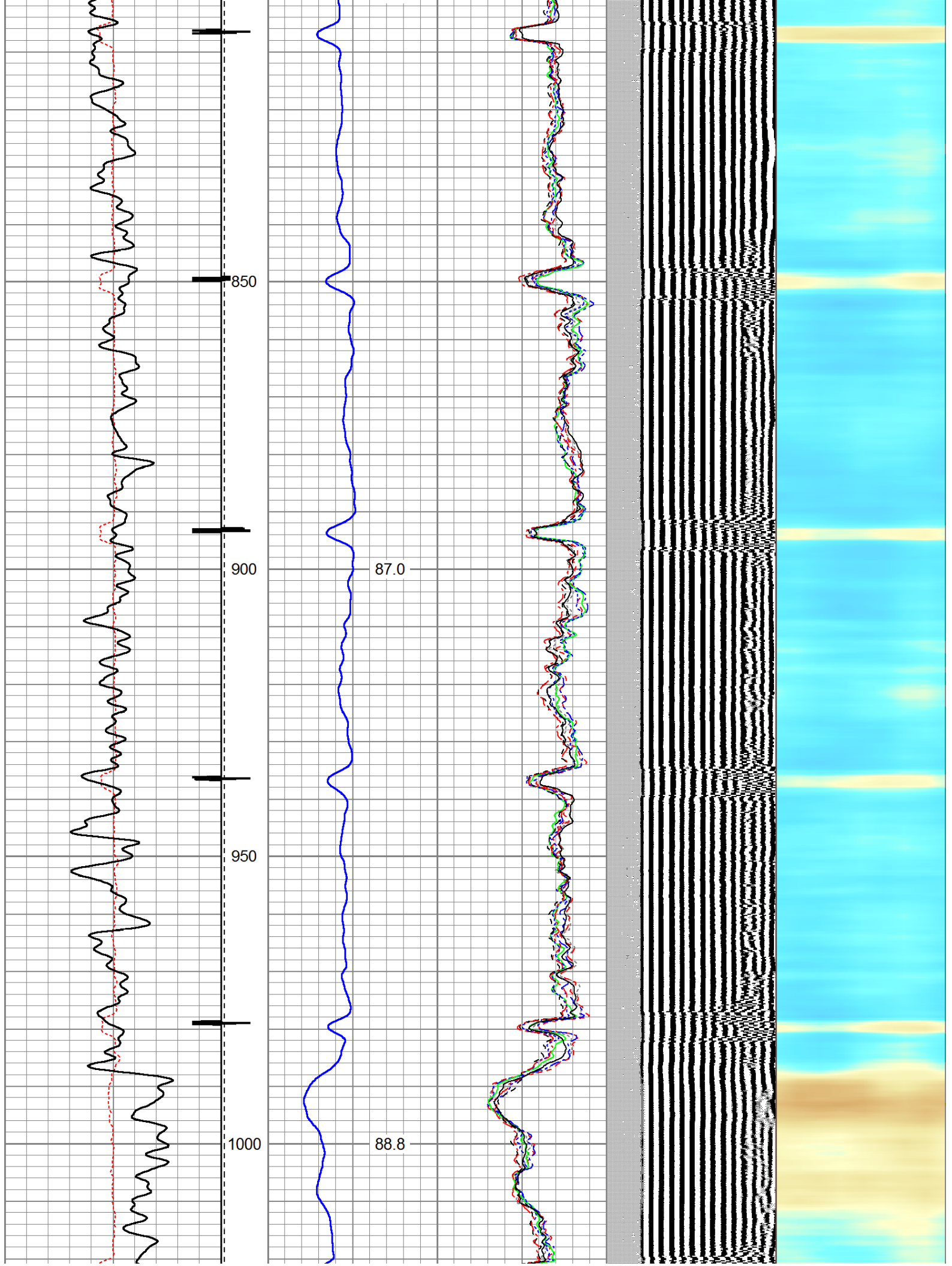
325	TT (usec)	225	LTEN	0	Amplitude (mV)	100	0	AMPS2	100	200	VDL	1200	Cement Map
0	GR (GAPI)	150	(lb)		Amplified Amplitude		0	AMPS3	100				1
			CCL	1000	(mV)	10	0	AMPS4	100				100
					TEMP		0	AMPS5	100				
					(degF)		0	AMPS6	100				
							0	AMPS7	100				
							0	AMPS8	100				
							0	AMPS1	100				

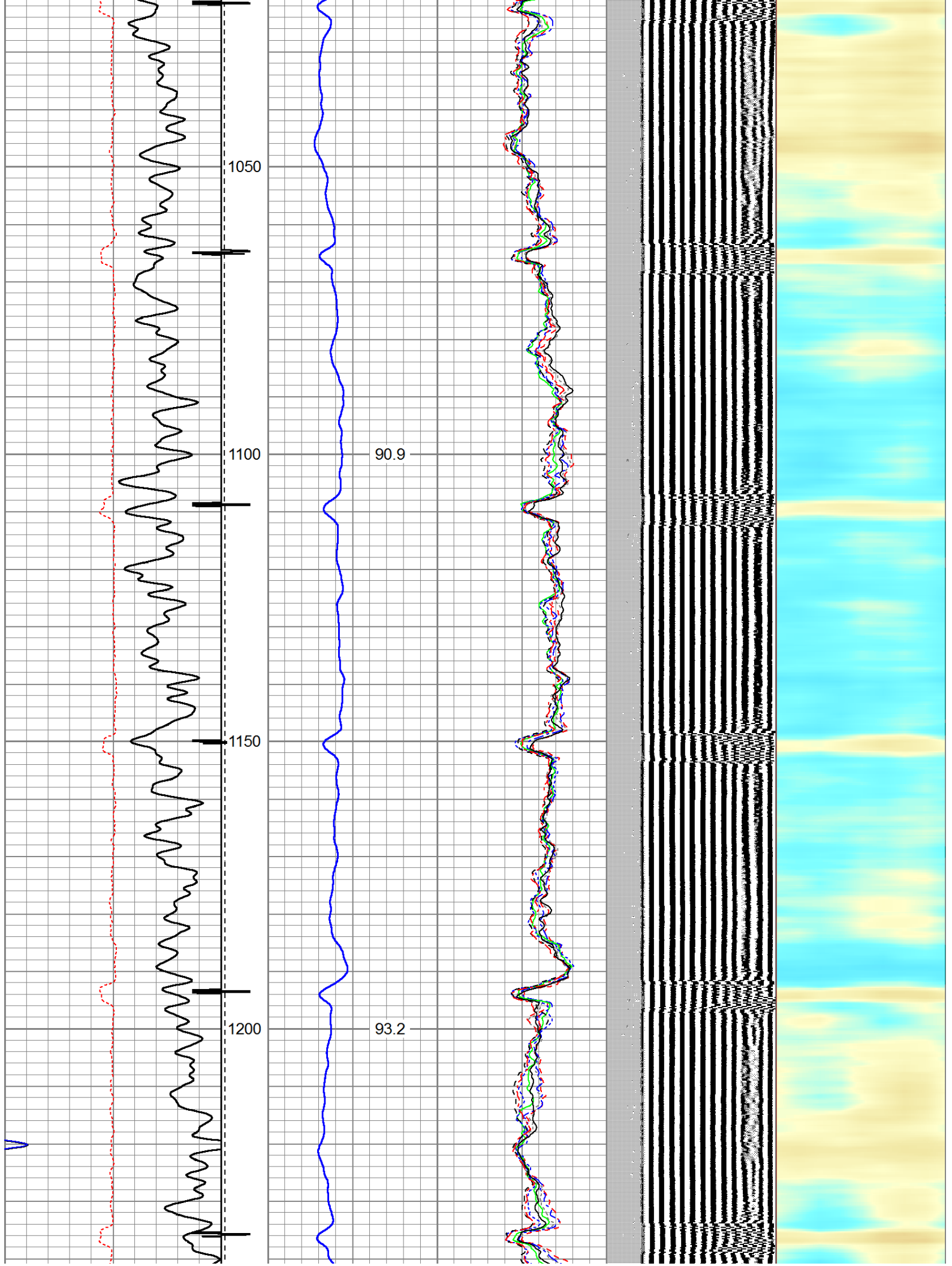


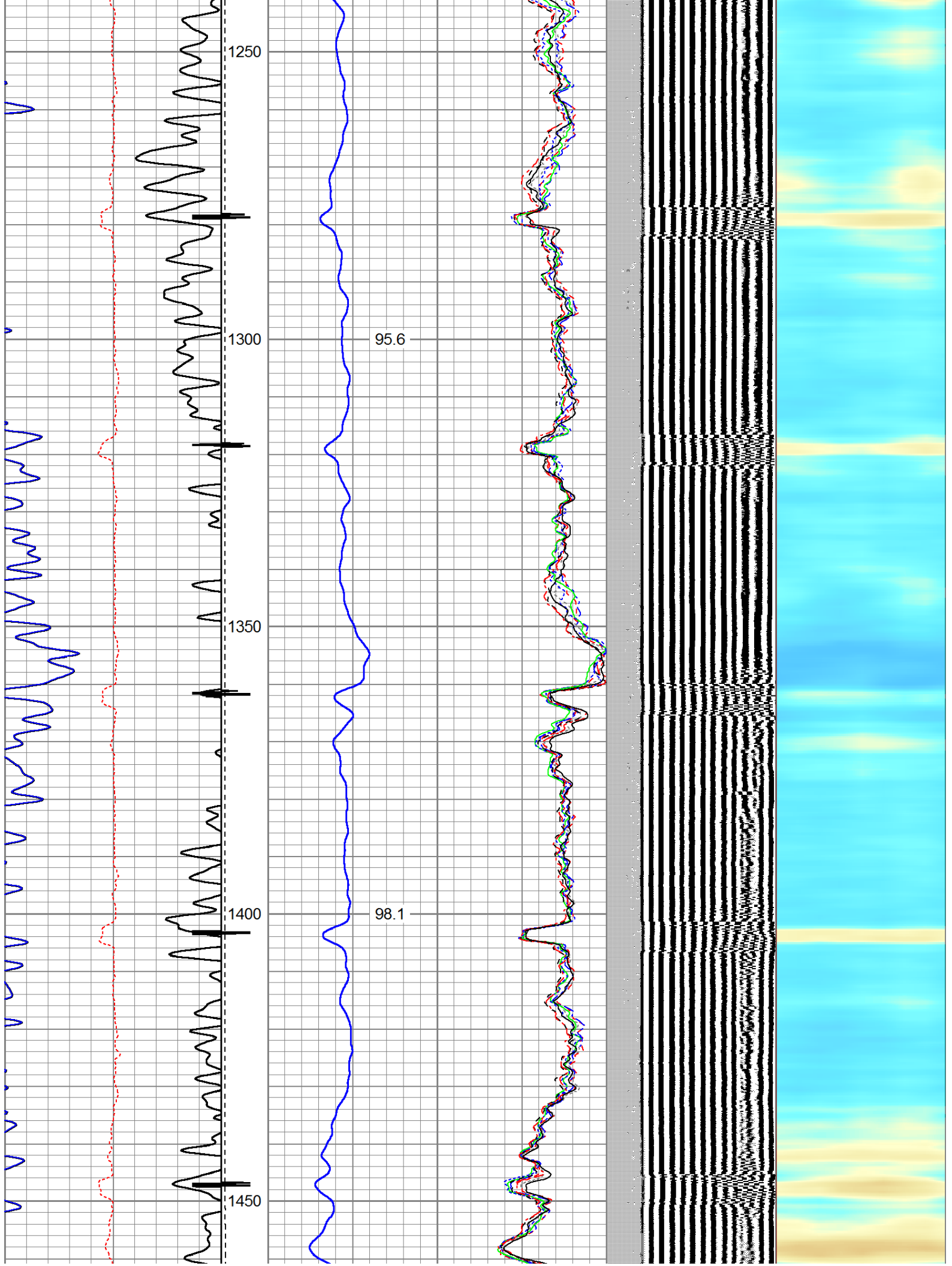


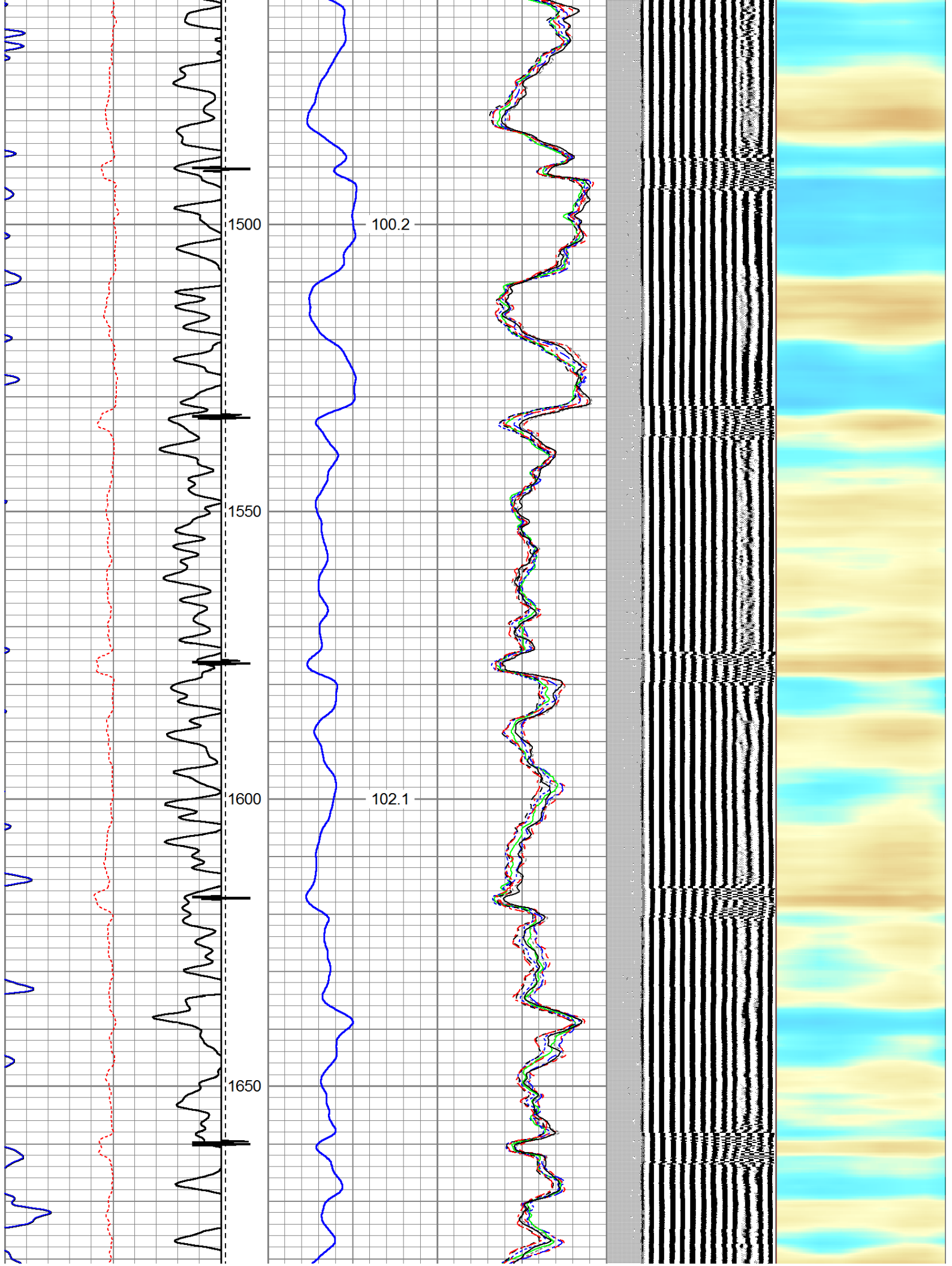


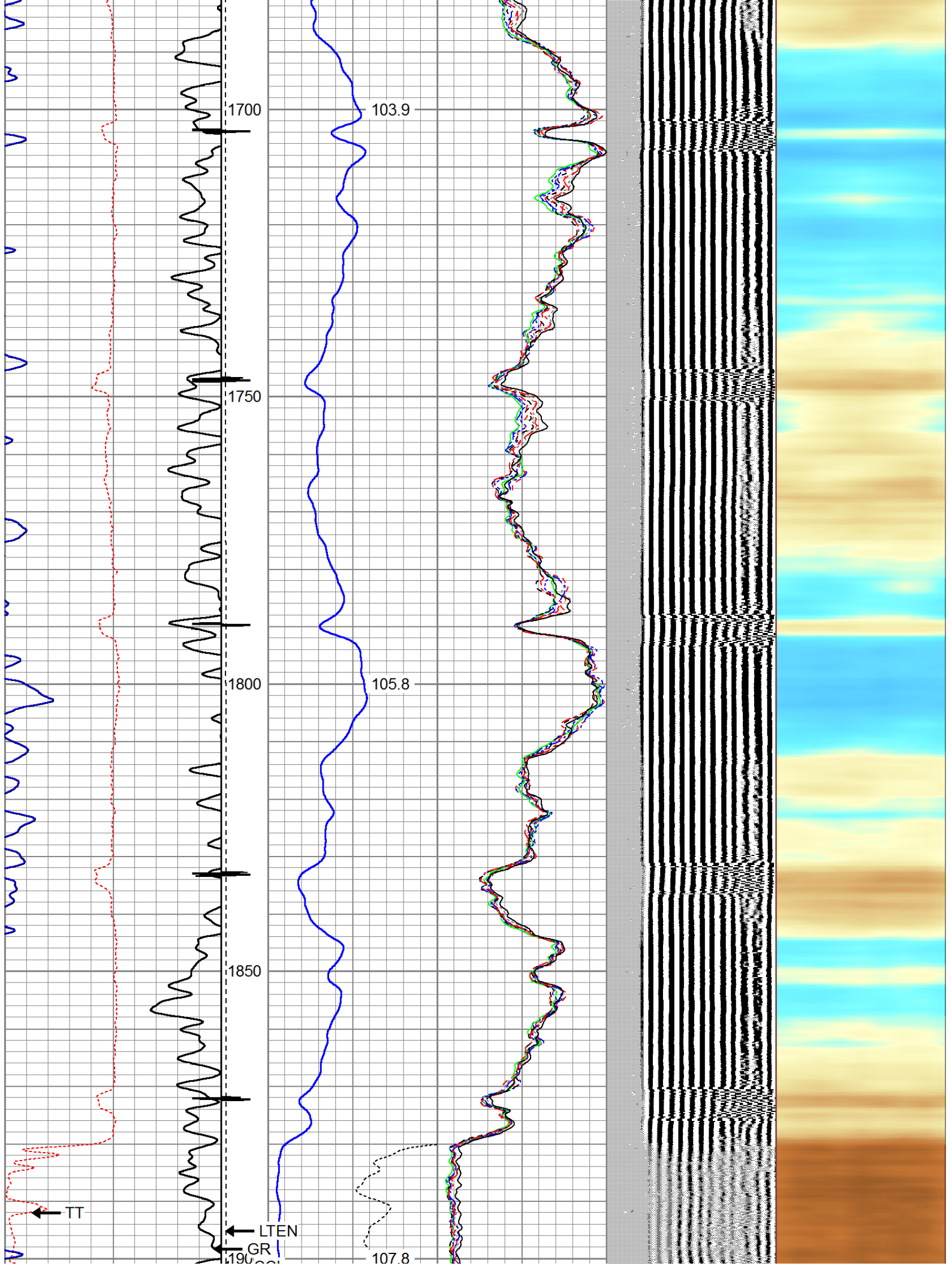


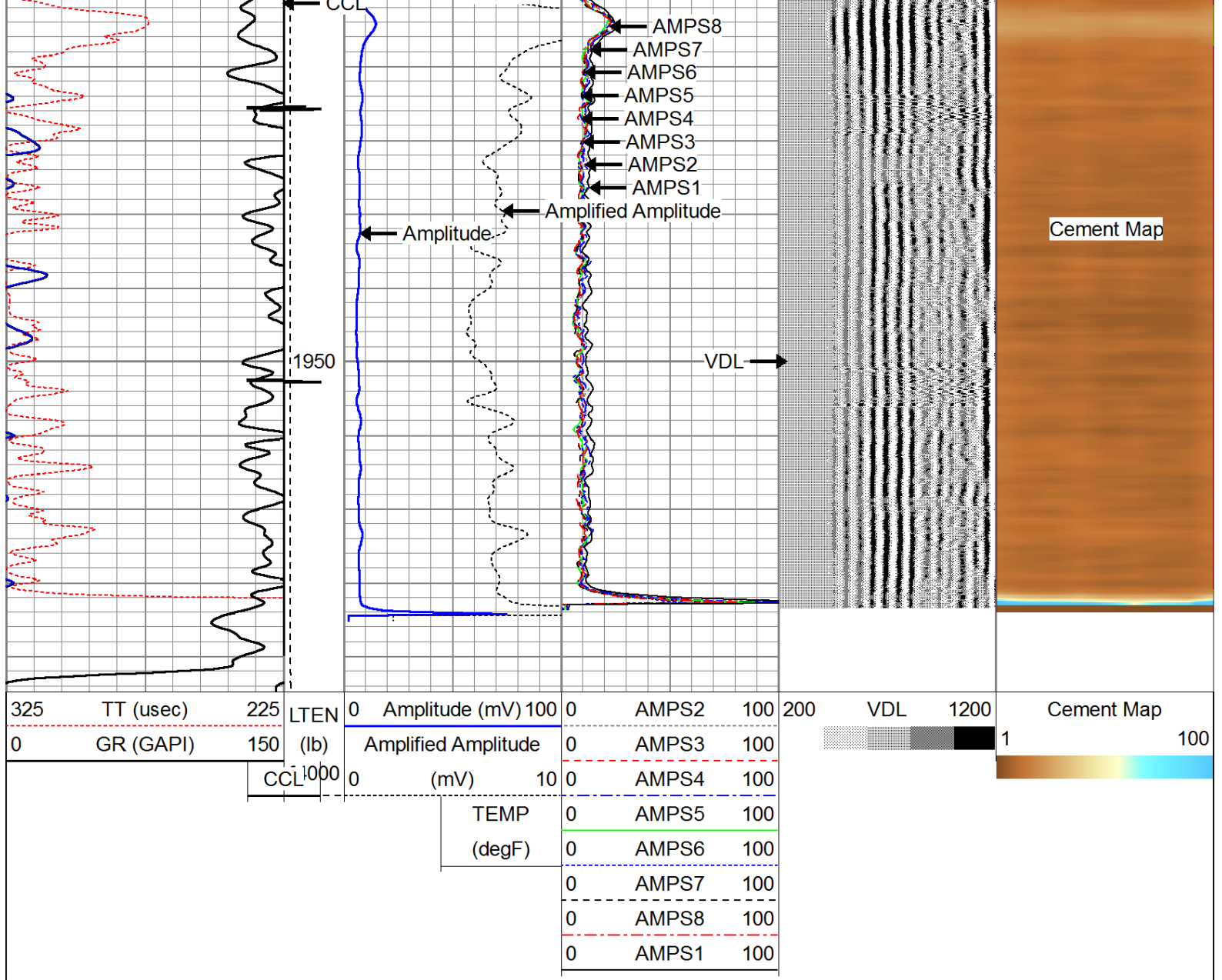








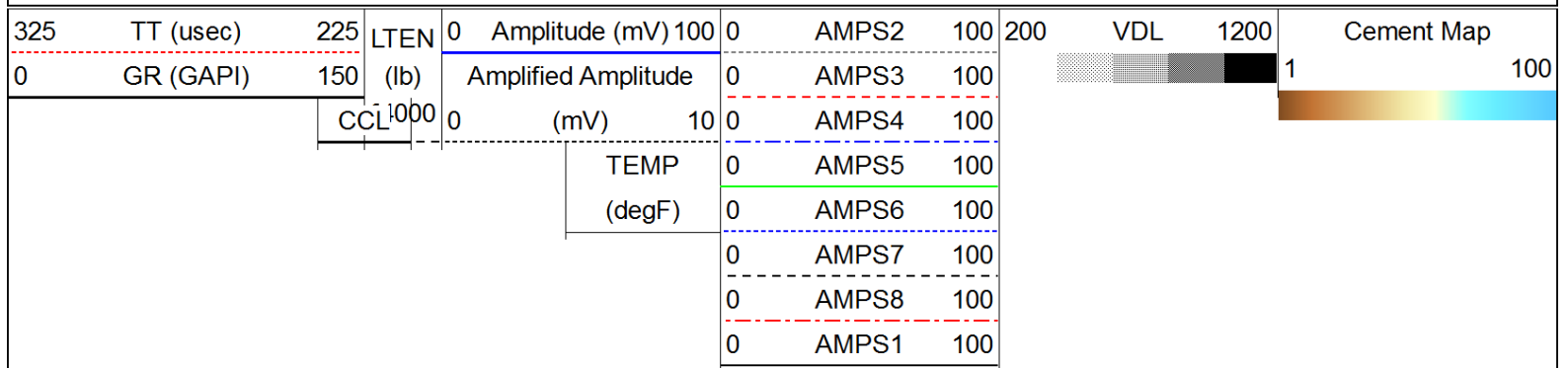


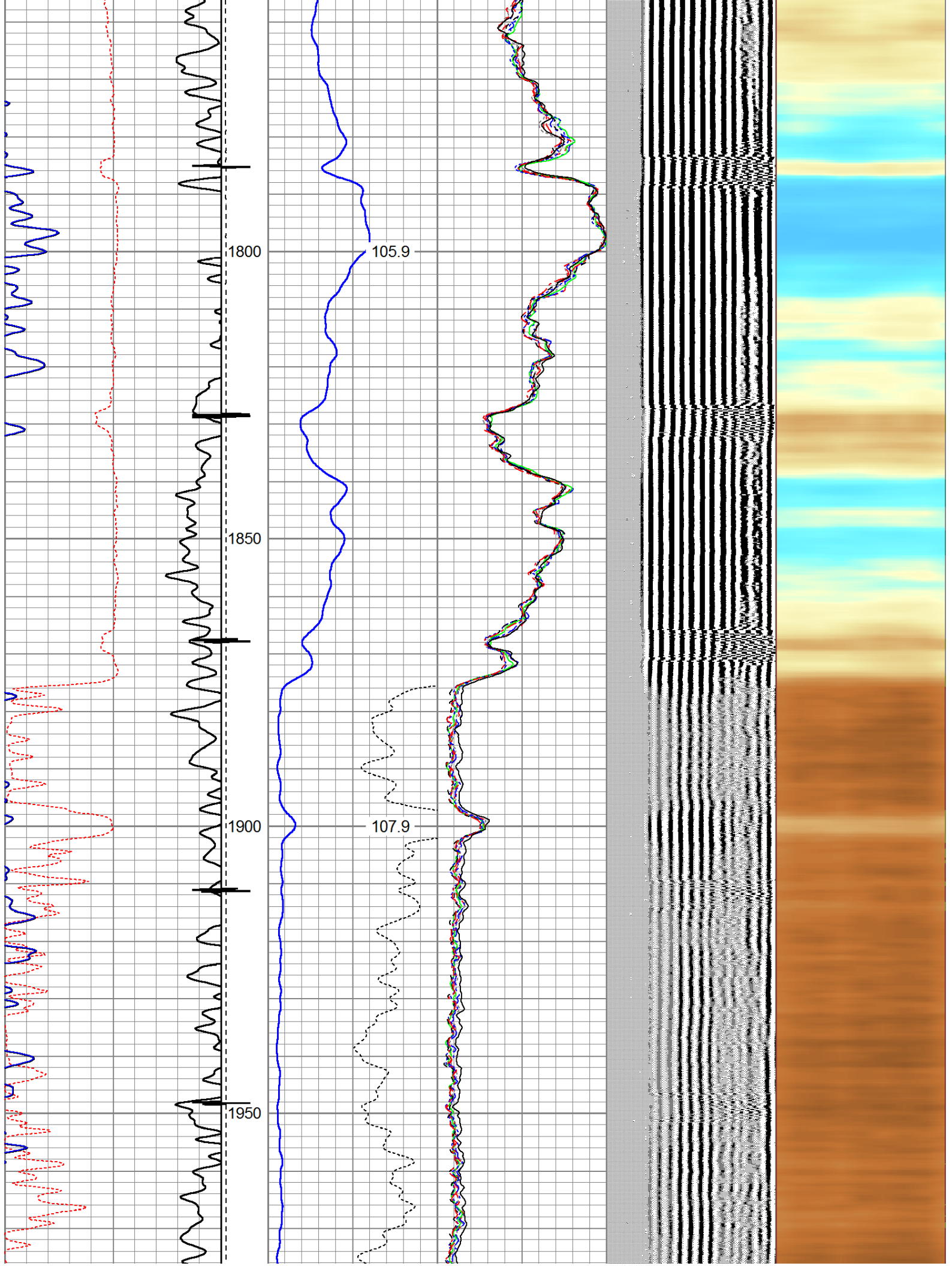


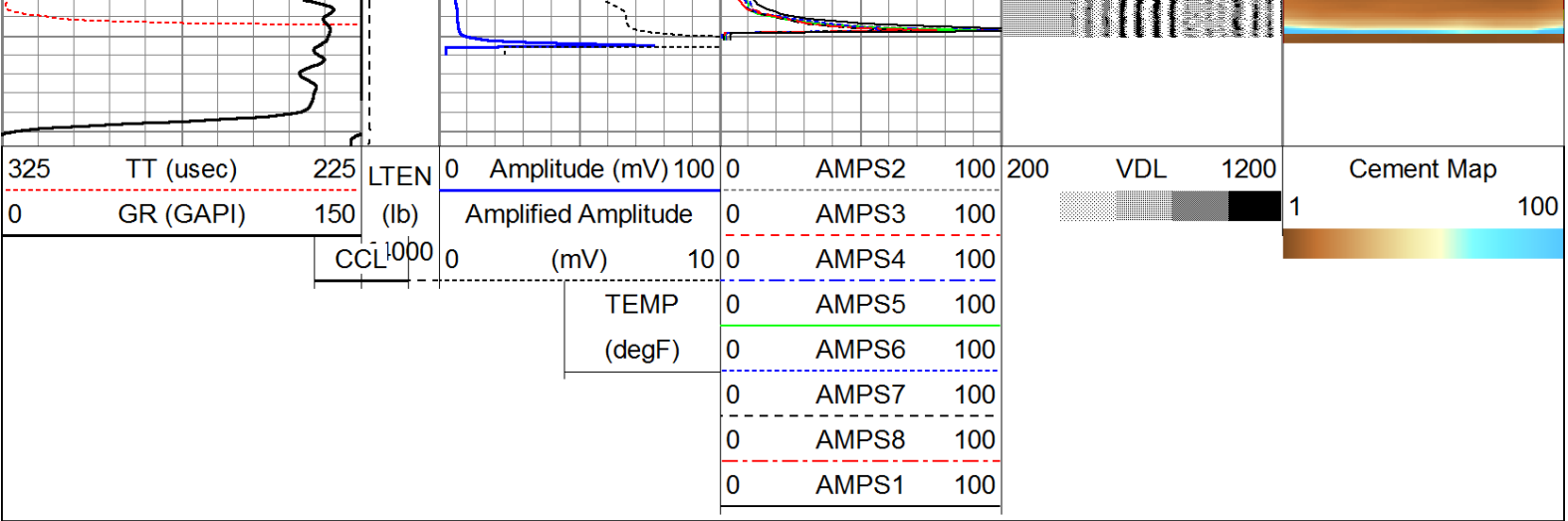
Repeat Pass

Logged With 0 PSI Surface Pressure

Database File: fee-6.db
 Dataset Pathname: merge5.1
 Presentation Format: rbl55
 Dataset Creation: Tue Sep 05 18:29:41 2017 by Calc 7.0 B1
 Charted by: Depth in Feet scaled 1:240







Sensor	Offset (ft)	Schematic	Description	Len (ft)	OD (in)	Wt (lb)
			Titan 1 7/16" Cable Head	1.00	1.44	1.00
			Probe	2.83	2.75	40.00
IntTemp	15.58					
WVF3FT	12.42		RBT-Probe (110217_7.0) Probe Radii Bond Tool with Digital Telemetry	8.75	2.75	90.00
WVFCAL	12.42					
WVFS1	12.42					
WVFS2	12.42					
WVFS3	12.42					
WVFS4	12.42					
WVFS5	12.42					
WVFS6	12.42					
WVFS7	12.42					
WVFS8	12.42					
WVF5FT	11.33					
			Probe	2.83	2.75	40.00
CCL	4.75					

