

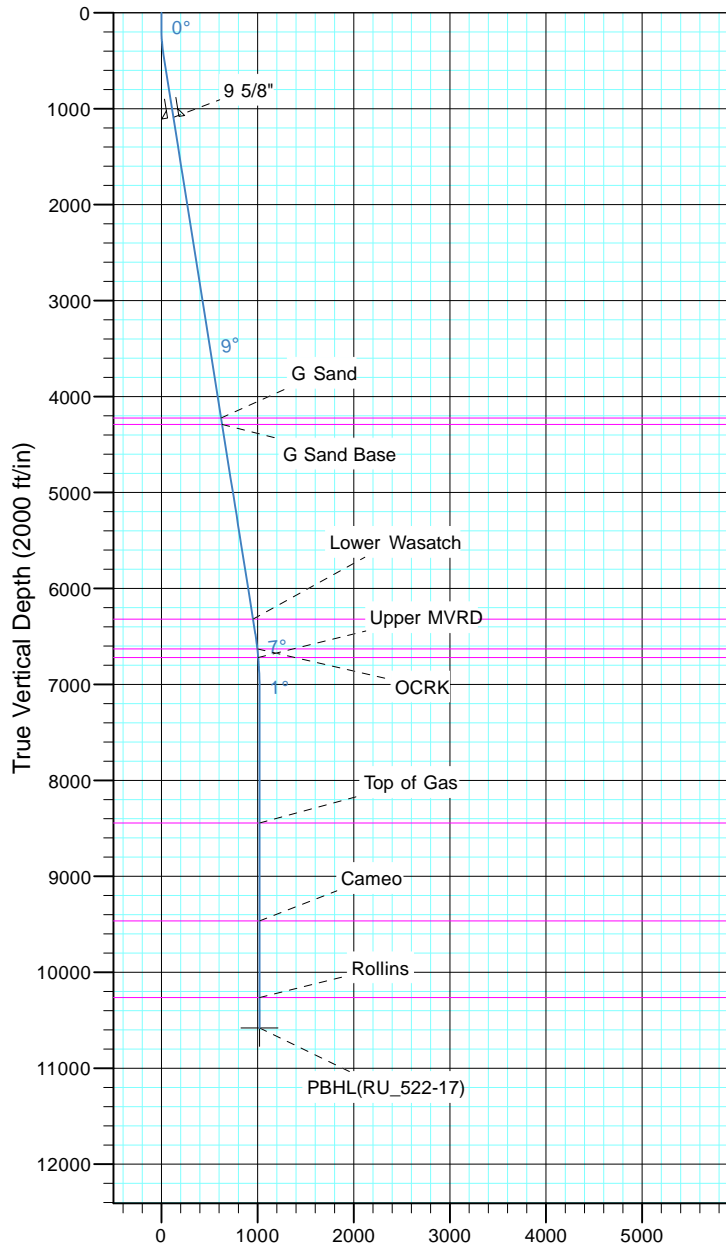
TEP Rocky Mountain LLC

Project: Garfield County, CO NAD83
Site: RU 23-17 Pad
Well: RU 522-17
Wellbore: OH
Design: Plan #1



Azimuths to True North
Magnetic North: 9.60°

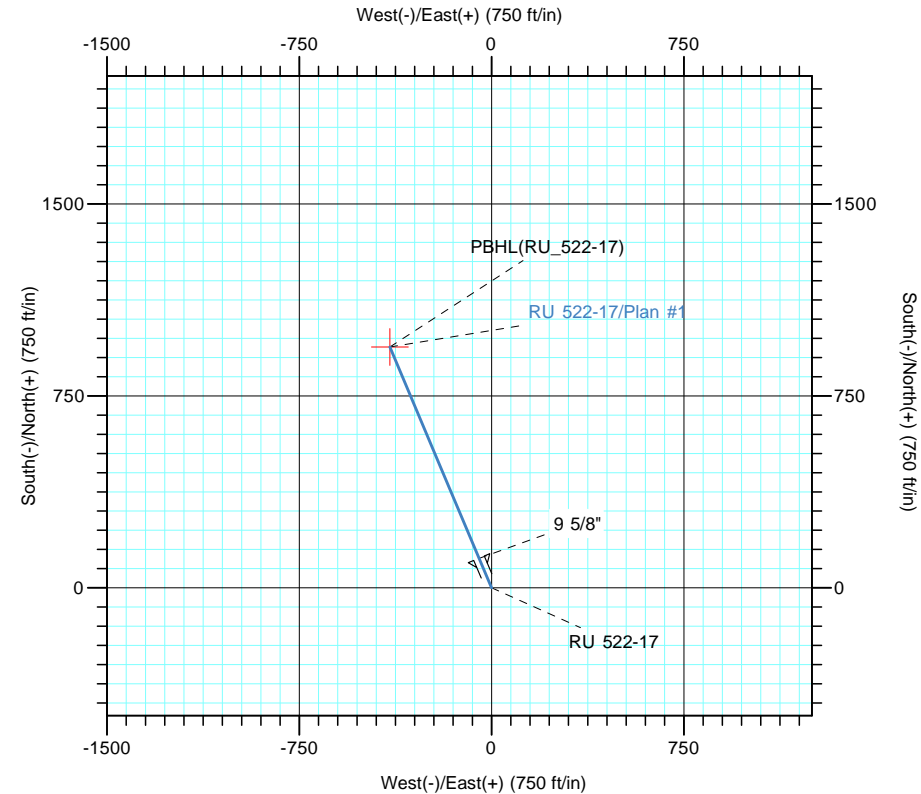
Magnetic Field
Strength: 51501.6snT
Dip Angle: 65.58°
Date: 7/5/2017
Model: IGRF2015



Vertical Section at 337.15° (2000 ft/in)

CASING DETAILS			
TVD	MD	Name	Size
1090.8	1100.0	9 5/8"	9.625

FORMATION TOP DETAILS		
TVDPath	MDPath	Formation
4225.0	4273.3	G Sand
4290.0	4339.1	G Sand Base
6320.0	6394.4	Lower Wasatch
6630.0	6707.7	OCRK
6720.0	6798.1	Upper MVRD
8445.0	8523.5	Top of Gas
9465.0	9543.5	Cameo
10265.0	10343.5	Rollins



DESIGN TARGET DETAILS							
Name	TVD	+N/-S	+E/-W	Northing	Easting	Latitude	Longitude
PBHL(RU_522-17)	10580.0	941.4	-396.6	1595609.40	2350854.00	39° 26' 46.165 N	107° 47' 56.166 W

SECTION DETAILS										
Sec	MD	Inc	Azi	TVD	+N/-S	+E/-W	Dleg	TFace	Vsect	Target
1	0.0	0.00	0.00	0.0	0.0	0.0	0.00	0.00	0.0	
2	150.0	0.00	0.00	150.0	0.0	0.0	0.00	0.00	0.0	
3	449.9	9.00	337.15	448.7	21.7	-9.1	3.00	337.15	23.5	
4	6530.7	9.00	337.15	6454.6	898.1	-378.4	0.00	0.00	974.5	
5	7130.5	0.00	0.00	7052.0	941.4	-396.6	1.50	180.00	1021.5	
6	10658.5	0.00	0.00	10580.0	941.4	-396.6	0.00	0.00	1021.5	PBHL(RU_522-17)