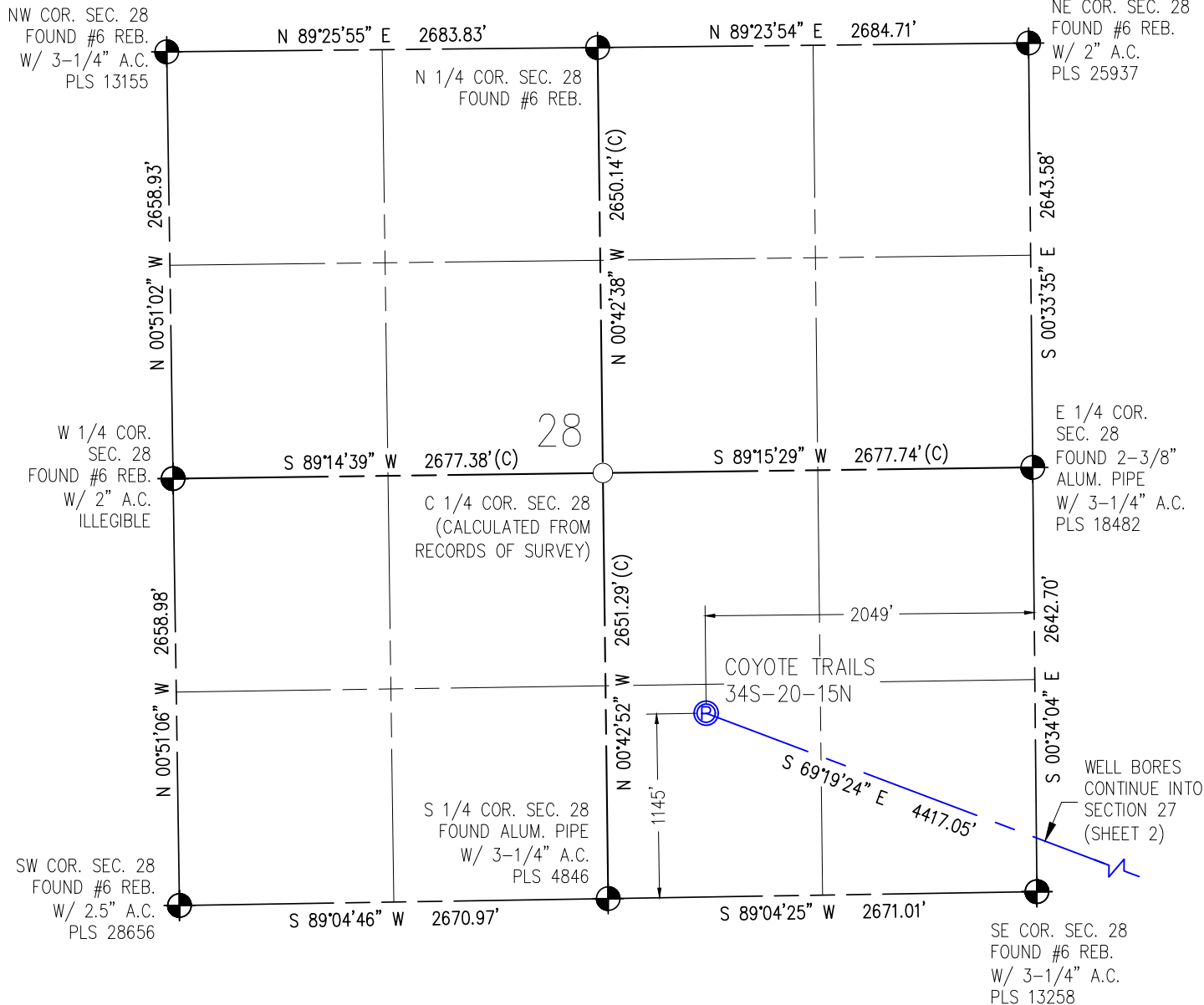


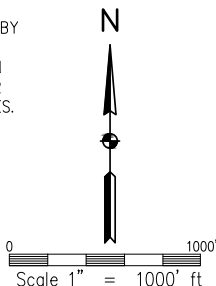
# WELL CERTIFICATION EXHIBIT COYOTE TRAILS 34S-20-15N

SW1/4 SE1/4 SEC. 28, T1N, R68W, 6TH P.M.



I HEREBY CERTIFY THAT THIS WELL LOCATION CERTIFICATE WAS PREPARED BY ME, OR UNDER MY DIRECT SUPERVISION, THAT THE FIELD WORK WAS COMPLETED ON 06/30/2017, THAT THIS IS NOT A LAND SURVEY PLAT OR AN IMPROVEMENT SURVEY PLAT, AND THAT IT IS NOT TO BE RELIED UPON FOR ESTABLISHMENT OF FENCE, BUILDING OR OTHER FUTURE IMPROVEMENT LINES.

AARON A. DEMO  
Professional Land Surveyor Registration No. 38285  
State of Colorado  
FOR AND ON BEHALF OF BASELINE ENGINEERING CORP.



SURFACE LOCATION  
SEC. 28, T1N, R68W  
GROUND ELEVATION = 5273'  
PDOP = 1.5  
LATITUDE = 40.017973°  
LONGITUDE = -105.006382°  
1145' FSL, 2049' FEL  
ENTRY POINT LOCATION  
SEC. 34, T1N, R68W  
LATITUDE = 40.013629°  
LONGITUDE = -104.991663°  
460' FNL, 2072' FWL  
BOTTOM HOLE LOCATION  
SEC. 3, T1S, R68W  
LATITUDE = 39.987048°  
LONGITUDE = -104.991458°  
150' FSL, 1617' FWL

## NOTES:

1. INDICATES SECTION CORNER
2. INDICATES CALCULATED CORNER
3. (C) INDICATES CALCULATED DIMENSION
4. ELEVATION BASED ON NAVD88 (GEOID12B)
5. BEARINGS DERIVED FROM COLORADO COORDINATE SYSTEM OF 1983 NORTH ZONE.
6. OPERATOR: TRAVIS WINNICKI
7. IMPROVEMENTS: SEE LOCATION DRAWING FOR ALL VISIBLE IMPROVEMENTS WITHIN 500' OF DISTURBED AREA.
8. WELL FOOTAGES ARE MEASURED AT RIGHT ANGLES TO THE SECTION LINES.

## NEAREST CULTURAL ITEMS:

BUILDING: 1497' S  
BUILDING UNIT: 1497' S  
HIGH OCCUPANCY BUILDING UNIT: 4804' SW  
DESIGNATED OUTSIDE ACTIVITY AREA: 5280' ±  
PUBLIC ROAD: WELD COUNTY ROAD 4 1333' SW  
ABOVE GROUND UTILITY: 1641' S  
RAILROAD: 5280' ±  
PROPERTY LINE: 625' W  
SURFACE USE: GRASSLAND.  
NEAREST EXISTING WELL: MEIKLE 2 394' E

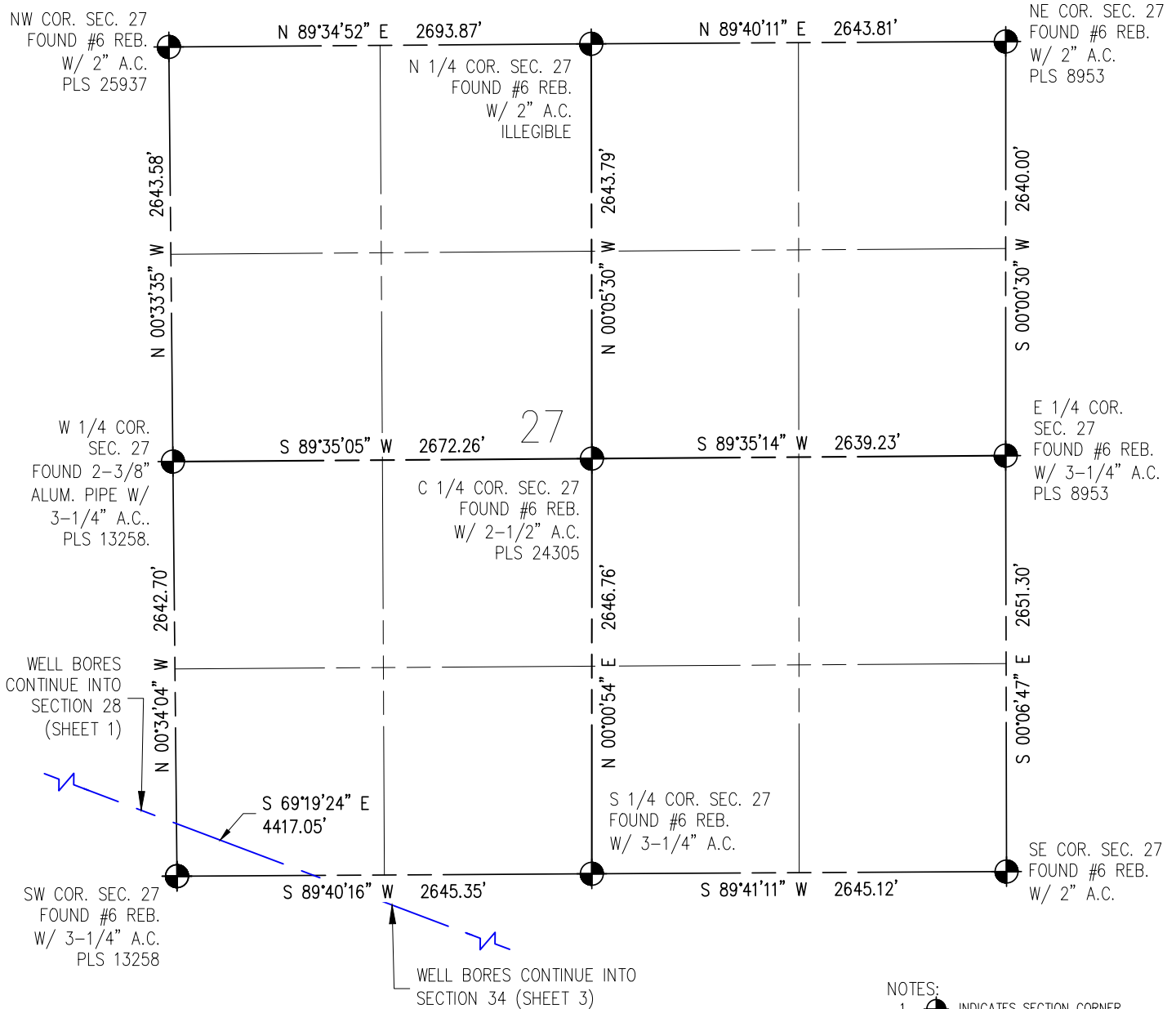


DRAWN BY	RPM	CHECKED BY	AAD
INITIAL SUBMITTAL	08/24/2017	REVISED	N/A
DRAWING SIZE	8.5" X 11"	JOB NO.	EXT01N68W28-01
SHEET	1	OF	4



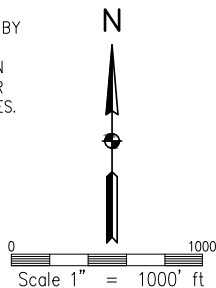
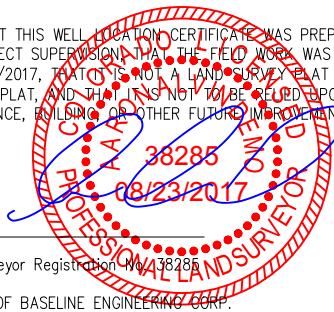
# WELL CERTIFICATION EXHIBIT COYOTE TRAILS 34S-20-15N

SW1/4 SE1/4 SEC. 28, T1N, R68W, 6TH P.M.



I HEREBY CERTIFY THAT THIS WELL LOCATION CERTIFICATE WAS PREPARED BY ME, OR UNDER MY DIRECT SUPERVISION, THAT THE FIELD WORK WAS COMPLETED ON 06/30/2017, THAT THIS IS NOT A LAND SURVEY PLAT OR AN IMPROVEMENT SURVEY PLAT, AND THAT IT IS NOT TO BE RELIED UPON FOR ESTABLISHMENT OF FENCE, BUILDING OR OTHER FUTURE IMPROVEMENT LINES.

AARON A. DEMO  
Professional Land Surveyor Registration No. 38285  
State of Colorado  
FOR AND ON BEHALF OF BASELINE ENGINEERING CORP.



SURFACE LOCATION  
SEC. 28, T1N, R68W  
GROUND ELEVATION = 5273'  
PDOP = 1.5  
LATITUDE = 40.017973°  
LONGITUDE = -105.006382°  
1145' FSL, 2049' FEL  
ENTRY POINT LOCATION  
SEC. 34, T1N, R68W  
LATITUDE = 40.013629°  
LONGITUDE = -104.991663°  
460' FNL, 2072' FWL  
BOTTOM HOLE LOCATION  
SEC. 3, T1S, R68W  
LATITUDE = 39.987048°  
LONGITUDE = -104.991458°  
150' FSL, 1617' FWL

## NOTES:

1. INDICATES SECTION CORNER
2. INDICATES CALCULATED CORNER
3. (C) INDICATES CALCULATED DIMENSION
4. ELEVATION BASED ON NAVD88 (GEOID12B)
5. BEARINGS DERIVED FROM COLORADO COORDINATE SYSTEM OF 1983 NORTH ZONE.
6. OPERATOR: TRAVIS WINNICKI
7. IMPROVEMENTS: SEE LOCATION DRAWING FOR ALL VISIBLE IMPROVEMENTS WITHIN 500' OF DISTURBED AREA.
8. WELL FOOTAGES ARE MEASURED AT RIGHT ANGLES TO THE SECTION LINES.

## NEAREST CULTURAL ITEMS:

BUILDING: 1497' S  
BUILDING UNIT: 1497' S  
HIGH OCCUPANCY BUILDING UNIT: 4804' SW  
DESIGNATED OUTSIDE ACTIVITY AREA: 5280' +  
PUBLIC ROAD: WELD COUNTY ROAD 4 1333' SW  
ABOVE GROUND UTILITY: 1641' S  
RAILROAD: 5280' +  
PROPERTY LINE: 625' W  
SURFACE USE: GRASSLAND  
NEAREST EXISTING WELL: MEIKLE 2 394' E



DRAWN BY	RPM
CHECKED BY	AAD
INITIAL SUBMITTAL	08/24/2017
REVISED	N/A
DRAWING SIZE	8.5" X 11"
JOB NO.	EXT01N68W28-01
SHEET	2 OF 4



4007 S. LINCOLN AVENUE, SUITE 405 - LOVELAND, COLORADO 80537  
P: 970.353.7800 - F: 970.353.7801 - [www.baselinecorp.com](http://www.baselinecorp.com)

## SW1/4 SE1/4 SEC. 28, T1N, R68W, 6TH P.M.

NW COR. SEC. 34  
FOUND #6 REB.  
W/ 3-1/4" A.C.  
PLS 13258

S 69°19'24" E  
4417.05'

ENTRY POINT

N 89°41'11" E 2645.12'

N 1/4 COR. SEC. 34  
FOUND #6 REB.  
W/ 3-1/4" A.C.

NE COR. SEC. 34  
FOUND #6 REB.  
W/ 2" A.C.

W 1/4 COR.  
SEC. 34  
FOUND #6 REB.  
W/ 3-1/4" A.C.  
PLS 18482

C 1/4 COR. SEC. 34  
FOUND #6 REB.  
W/ 2-1/2" A.C.

E 1/4 COR.  
SEC. 34  
FOUND #6 REB.  
W/ 3-1/4" A.C.

SW COR. SEC. 34  
FOUND #6 REB.  
W/ 3-1/4" A.C.  
PLS 38285

S 1/4 COR. SEC. 34  
FOUND #6 REB.  
W/ 2-1/2" A.C.  
PLS 14823


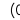
SE COR. SEC. 34  
FOUND #6 REB.  
W/ 3-1/4" A.C.  
PLS 23027

NW COR. SEC. 3  
FOUND #6 REB.  
W/ 2" A.C.  
PLS 23500

WELL BORES  
CONTINUE INTO  
SECTION 3  
(SHEET 4)

N 1/4 COR. SEC. 3  
FOUND #6 REB.  
W/ 3-1/4" A.C.  
PLS 24942

NE COR. SEC. 3  
FOUND AL. POST  
W/ 3-1/4" A.C.  
PLS 34977

1.  INDICATES SECTION CORNER
2.  INDICATES CALCULATED CORNER
3. (C) INDICATES CALCULATED DIMENSION
4. ELEVATION BASED ON NAVD88 (GEOID12B)
5. BEARINGS DERIVED FROM COLORADO COORDINATE SYSTEM OF 1983 NORTH ZONE.
6. OPERATOR: TRAVIS WINNICKI
7. IMPROVEMENTS: SEE LOCATION DRAWING FOR ALL VISIBLE IMPROVEMENTS WITHIN 500' OF DISTURBED AREA.
8. WELL FOOTAGES ARE MEASURED AT RIGHT ANGLES TO THE SECTION LINES.

SURFACE LOCATION  
SEC. 28, T1N, R68W  
GROUND ELEVATION = 5273'  
PDOP = 1.5  
LATITUDE = 40.017973'  
LONGITUDE = -105.006382'  
1145' FSL, 2049' FEL  
ENTRY POINT LOCATION  
SEC. 34, T1N, R68W  
LATITUDE = 40.013629'  
LONGITUDE = -104.991663'  
460' FNL, 2072' FWL  
BOTTOM HOLE LOCATION  
SEC. 3, T1S, R68W  
LATITUDE = 39.987048'  
LONGITUDE = -104.991458'  
150' FSL, 1617' FWL

I HEREBY CERTIFY THAT THIS WELL LOCATION CERTIFICATE WAS PREPARED BY ME, OR UNDER MY DIRECT SUPERVISION THAT THE FIELD WORK WAS COMPLETED ON 06/30/2017, THAT IT IS NOT A LAND SURVEY PLAT OR AN IMPROVEMENT SURVEY PLAT, AND THAT IT IS NOT TO BE RELIED UPON FOR ESTABLISHMENT OF FENCE, BUILDING OR OTHER FUTURE IMPROVEMENT LINES.

AARON A. DEMO  
Professional Land Surveyor Registration No. 38285  
State of Colorado  
FOR AND ON BEHALF OF BASELINE ENGINEERING CORP.

NEAREST CULTURAL ITEMS:

BUILDING: 1497' S  
BUILDING UNIT: 1497' S  
HIGH OCCUPANCY BUILDING UNIT: 4804' SW  
DESIGNATED OUTSIDE ACTIVITY AREA: 5280'+  
PUBLIC ROAD: WELD COUNTY ROAD 4 1333' SW  
ABOVE GROUND UTILITY: 1641' S  
RAILROAD: 5280'+  
PROPERTY LINE: 625' W  
SURFACE USE: GRASSLAND.  
NEAREST EXISTING WELL: MEIKLE 2 394' E

The logo for Extraction Oil & Gas features the word "EXTRACTION" in a large, bold, blue sans-serif font. Above the letter "A" is a stylized black oil derrick with a sunburst of rays emanating from its top. Below the word "EXTRACTION" is a thin black horizontal line, and underneath that line, the words "Oil & Gas" are written in a smaller, blue, cursive-style font.

DRAWN BY

CHECKED BY \_\_\_\_\_

INITIAL SUBMITTAL	08/24/2017
-------------------	------------

REVISED	N/A
---------	-----

DRAWING SIZE	8.5" X 11"
--------------	------------

JOB NO.	EXT01N68W28-01
---------	----------------

SHEET 3 OF 4


**BASELINE**

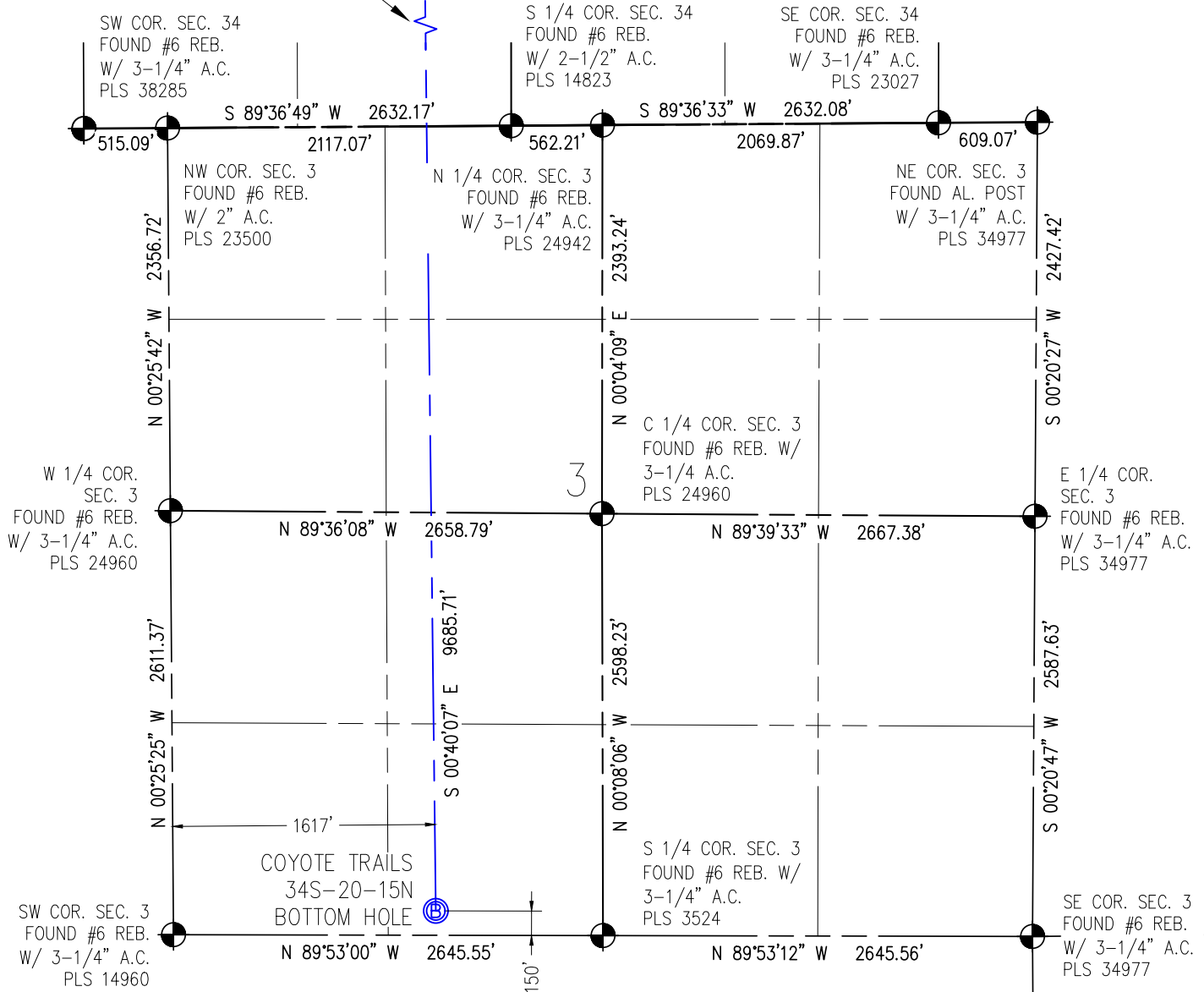
Engineering • Planning • Surveying

4007 S. LINCOLN AVENUE, SUITE 405 • LOVELAND, COLORADO 80537  
P: 970.353.7800 • F: 970.353.7801 • [www.baselline.com](http://www.baselline.com)

# WELL CERTIFICATION EXHIBIT COYOTE TRAILS 34S-20-15N

SW1/4 SE1/4 SEC. 28, T1N, R68W, 6TH P.M.

WELL BORES CONTINUE INTO  
SECTION 34 (SHEET 3)



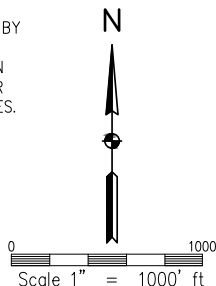
## NOTES:

1. INDICATES SECTION CORNER
2. INDICATES CALCULATED CORNER
3. (C) INDICATES CALCULATED DIMENSION
4. ELEVATION BASED ON NAVD88 (GEOID12B)
5. BEARINGS DERIVED FROM COLORADO COORDINATE SYSTEM OF 1983 NORTH ZONE.
6. OPERATOR: TRAVIS WINNICKI
7. IMPROVEMENTS: SEE LOCATION DRAWING FOR ALL VISIBLE IMPROVEMENTS WITHIN 500' OF DISTURBED AREA.
8. WELL FOOTAGES ARE MEASURED AT RIGHT ANGLES TO THE SECTION LINES.

SURFACE LOCATION  
SEC. 28, T1N, R68W  
GROUND ELEVATION = 5273'  
PDOP = 1.5  
LATITUDE = 40.017973°  
LONGITUDE = -105.006382°  
1145' FSL, 2049' FEL  
ENTRY POINT LOCATION  
SEC. 34, T1N, R68W  
LATITUDE = 40.013629°  
LONGITUDE = -104.991663°  
460' FNL, 2072' FWL  
BOTTOM HOLE LOCATION  
SEC. 3, T1S, R68W  
LATITUDE = 39.987048°  
LONGITUDE = -104.991458°  
150' FSL, 1617' FWL

I HEREBY CERTIFY THAT THIS WELL LOCATION CERTIFICATE WAS PREPARED BY ME, OR UNDER MY DIRECT SUPERVISION, THAT THE FIELD WORK WAS COMPLETED ON 06/30/2017, THAT THIS IS NOT A LAND SURVEY PLAT OR AN IMPROVEMENT SURVEY PLAT, AND THAT IT IS NOT TO BE RELED UPON FOR ESTABLISHMENT OF FENCE, BUILDING OR OTHER FUTURE IMPROVEMENT LINES.

AARON A. DEMO  
Professional Land Surveyor Registration No. 38285  
State of Colorado  
FOR AND ON BEHALF OF BASELINE ENGINEERING CORP.



## NEAREST CULTURAL ITEMS:

BUILDING: 1497' S  
BUILDING UNIT: 1497' S  
HIGH OCCUPANCY BUILDING UNIT: 4804' SW  
DESIGNATED OUTSIDE ACTIVITY AREA: 5280' ±  
PUBLIC ROAD: WELD COUNTY ROAD 4 1333' SW  
ABOVE GROUND UTILITY: 1641' S  
RAILROAD: 5280' ±  
PROPERTY LINE: 625' W  
SURFACE USE: GRASSLAND  
NEAREST EXISTING WELL: MEIKLE 2 394' E



DRAWN BY RPM	CHECKED BY AAD
INITIAL SUBMITAL REVISED	08/24/2017 N/A
DRAWING SIZE	8.5" X 11"
JOB NO.	EXT01N68W28-01
SHEET	4 OF 4

