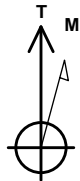
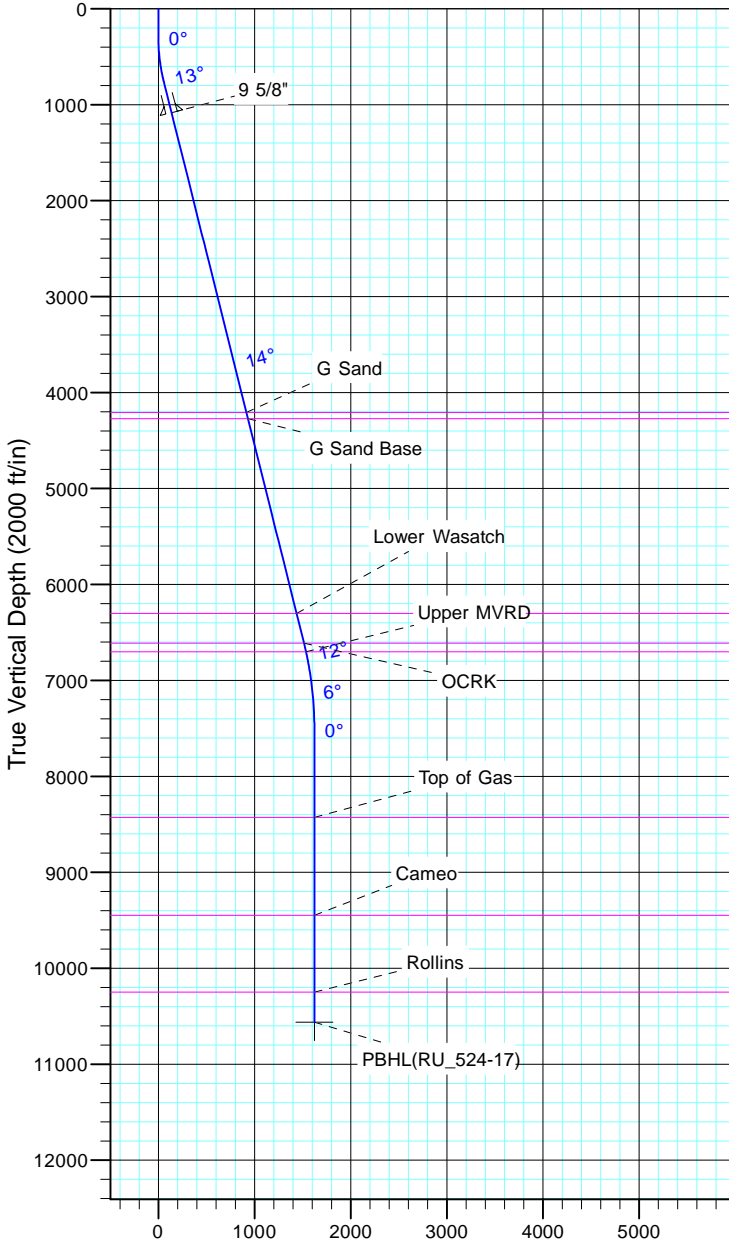


TEP Rocky Mountain LLC
Project: Garfield County, CO NAD83
Site: RU 23-17 Pad
Well: RU 524-17
Wellbore: OH
Design: Plan #1



Azimuths to True North
Magnetic North: 11.35°

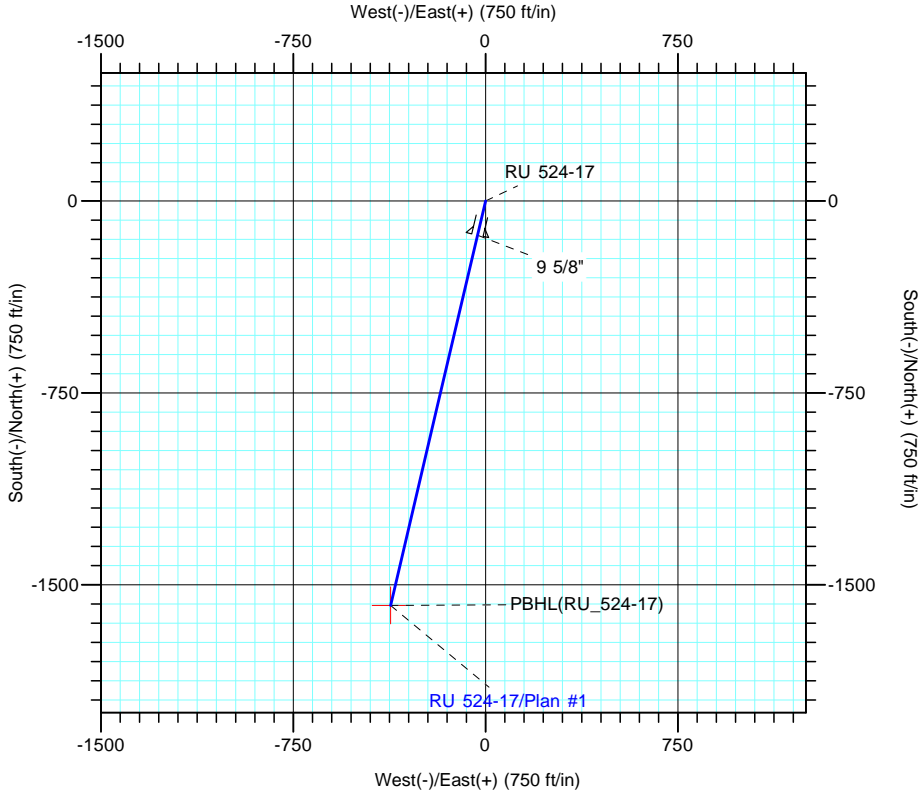
Magnetic Field
Strength: 53028.0snT
Dip Angle: 65.98°
Date: 12/31/2004
Model: IGRF2000



Vertical Section at 193.18° (2000 ft/in)

CASING DETAILS			
TVD	MD	Name	Size
1085.5	1100.0	9 5/8"	9.625

FORMATION TOP DETAILS		
TVDPATH	MDPATH	FORMATION
4208.0	4318.1	G Sand
4273.0	4385.1	G Sand Base
6303.0	6477.2	Lower Wasatch
6613.0	6796.7	OCRK
6703.0	6889.0	Upper MVRD
8428.0	8620.2	Top of Gas
9448.0	9640.2	Cameo
10248.0	10440.2	Rollins



DESIGN TARGET DETAILS						
Name	TVD	+N/-S	+E/-W	Northing	Easting	Latitude
PBHL(RU_524-17)	10563.0	-1580.1	-370.1	1593011.50	2350877.10	39° 26' 20.502 N

SECTION DETAILS										
Sec	MD	Inc	Azi	TVD	+N/-S	+E/-W	Dleg	TFace	Vsect	Target
1	0.0	0.00	0.00	0.0	0.0	0.0	0.00	0.00	0.0	
2	300.0	0.00	0.00	300.0	0.0	0.0	0.00	0.00	0.0	
3	766.6	14.00	193.18	762.0	-55.2	-12.9	3.00	193.18	56.7	
4	6772.0	14.00	193.18	6589.0	-1469.6	-344.2	0.00	0.00	1509.4	
5	7705.2	0.00	0.00	7513.0	-1580.1	-370.1	1.50	180.00	1622.8	
6	10755.2	0.00	0.00	10563.0	-1580.1	-370.1	0.00	0.00	1622.8	PBHL(RU_524-17)