

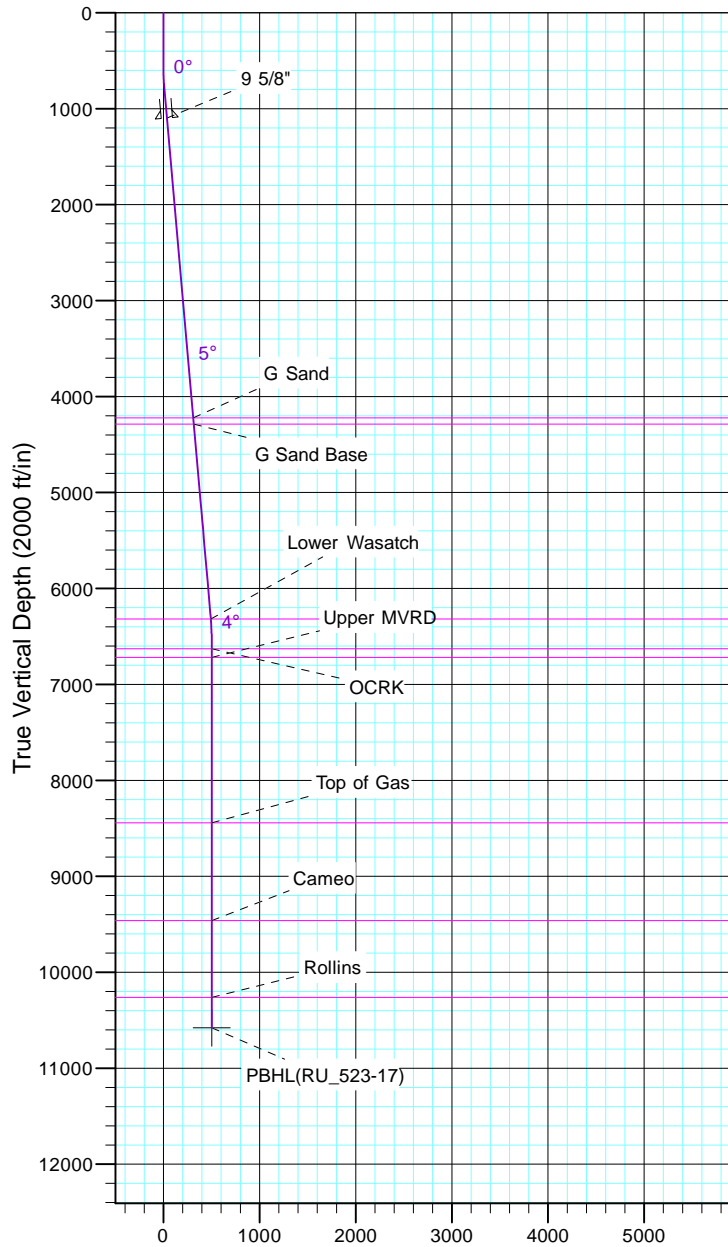
TEP Rocky Mountain LLC

Project: Garfield County, CO NAD83
Site: RU 23-17 Pad
Well: RU 523-17
Wellbore: OH
Design: Plan #1



Azimuths to True North
Magnetic North: 9.60°

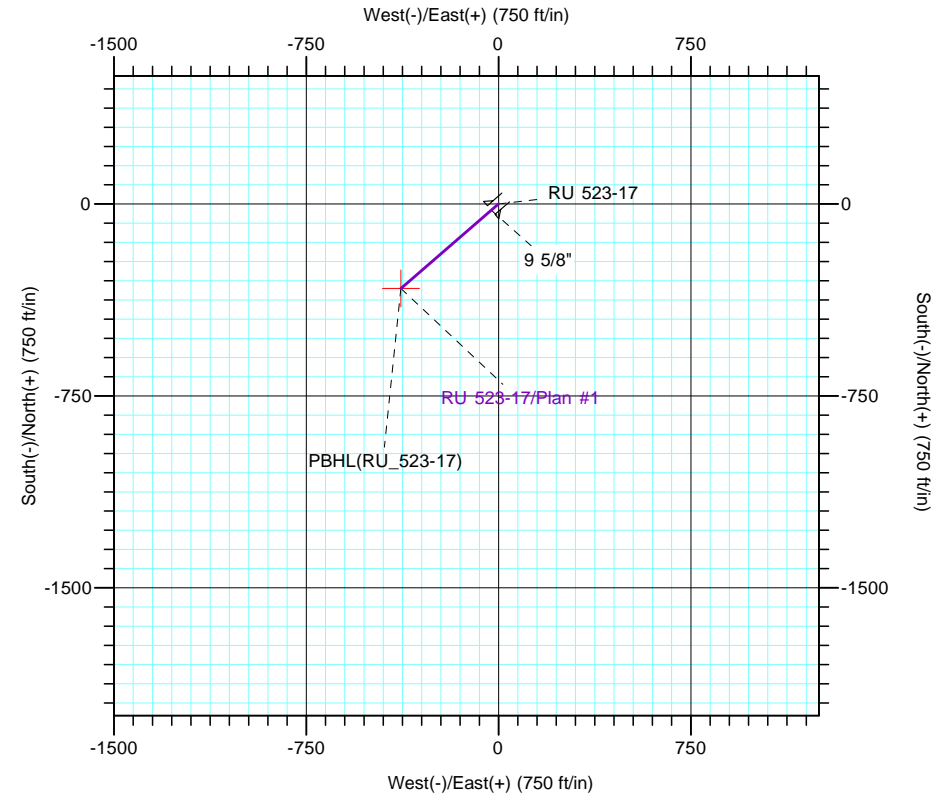
Magnetic Field
Strength: 51501.5nT
Dip Angle: 65.58°
Date: 7/5/2017
Model: IGRF2015



Vertical Section at 229.07° (2000 ft/in)

CASING DETAILS			
TVD	MD	Name	Size
1098.5	1100.0	9 5/8"	9.625

FORMATION TOP DETAILS		
TVDPath	MDPath	Formation
4223.0	4236.4	G Sand
4288.0	4301.7	G Sand Base
6318.0	6339.4	Lower Wasatch
6628.0	6649.6	OCRK
6718.0	6739.6	Upper MVRD
8443.0	8464.6	Top of Gas
9463.0	9484.6	Cameo
10263.0	10284.6	Rollins



DESIGN TARGET DETAILS							
Name	TVD	+N/-S	+E/-W	Northing	Easting	Latitude	Longitude
PBHL(RU_523-17)	10578.0	-330.1	-380.7	1594302.50	2350865.70	39° 26' 33.255 N	107° 47' 55.596 W

SECTION DETAILS										
Sec	MD	Inc	Azi	TVD	+N/-S	+E/-W	Dleg	TFace	VSec	Target
1	0.0	0.00	0.00	0.0	0.0	0.0	0.00	0.00	0.0	
2	550.0	0.00	0.00	550.0	0.0	0.0	0.00	0.00	0.0	
3	800.1	5.00	229.07	799.8	-7.2	-8.2	2.00	229.07	10.9	
4	6286.1	5.00	229.07	6264.9	-320.6	-369.7	0.00	0.00	489.3	
5	6619.6	0.00	0.00	6598.0	-330.1	-380.7	1.50	180.00	503.9	
6	10599.6	0.00	0.00	10578.0	-330.1	-380.7	0.00	0.00	503.9	PBHL(RU_523-17)